

TANDBERG

Compass/Utility **MXP**

User Manual



Software version F4
D13865-01

This document is not to be reproduced in whole or in part without permission in writing from:

TANDBERG

Trademarks and Copyright

All rights reserved. This document contains information that is proprietary to TANDBERG. No part of this publication may be reproduced, stored in a retrieval system, or transmitted, in any form, or by any means, electronically, mechanically, by photocopying, or otherwise, without the prior written permission of TANDBERG. Nationally and internationally recognized trademarks and trade names are the property of their respective holders and are hereby acknowledged.

This product includes software developed by the [OpenSSL](#) Project for use in the OpenSSL Toolkit. Copyright © 1998-2002 The OpenSSL Project. All rights reserved.

This product includes cryptographic software written by Eric Young. Copyright © 1995-1998 Eric Young. All rights reserved.

Contains iType™ from Agfa Monotype Corporation.

AGFA | Monotype

[ICU License](#) - ICU 1.8.1 and later COPYRIGHT AND PERMISSION NOTICE Copyright (c) 1995-2003 International Business Machines Corporation and others All rights reserved.

Disclaimer

The information in this document is furnished for informational purposes only, is subject to change without prior notice, and should not be construed as a commitment by TANDBERG. The information in this document is believed to be accurate and reliable; however TANDBERG assumes no responsibility or liability for any errors or inaccuracies that may appear in this document, nor for any infringements of patents or other rights of third parties resulting from its use. No license is granted under any patents or patent rights of TANDBERG.

This document was written by the Research and Development Department of TANDBERG, Norway. We are committed to maintain a high level of quality in all our documentation. Towards this effort, we welcome you to [Contact us](#) with comments and suggestions regarding the content and structure of this document.

COPYRIGHT © 2006, TANDBERG

Environmental Issues

TANDBERG visual communication products significantly reduce the need for travel and thereby help reduce various types of pollution. TANDBERG recommends the use of low energy peripherals, such as EnergyStar™ monitors. Thank you for buying a TANDBERG product.

Battery handling

The batteries for the Remote Control are Long Life Alkaline batteries, which means you will need fewer batteries, further benefiting the environment. Please follow the guidelines on the packing material for handling and disposal instructions for the batteries.

Waste handling

This TANDBERG product contains no consumables that require disposal. You should retain the packaging materials in case future shipment is necessary. Please contact your local authorities for information on waste handling and recycling regulations for electronic products.

Production of products

Our factories employ the most efficient environmental methods for reducing waste and pollution. Our designers do their best to ensure TANDBERG products are highly recyclable.

Digital User Manuals

TANDBERG is pleased to announce that it has replaced the printed versions of its User Manuals with a digital CD version. Instead of a range of different user manuals, there is now one CD which can be used with all TANDBERG MXP products. The CD contains a variety of supported languages. The environmental benefits of digital manuals are significant, from saving paper, to reduced weight for shipping. Even the CD itself is recyclable. Not only are they more ecological, digital manuals are more user friendly. A simple web-based search feature helps users directly access the information they need. In addition, this TANDBERG video system now has an intuitive on-screen help function, which provides a range of useful features and tips. If desired, the user manuals on the CD can still be printed locally.

Operator Safety Summary

For your protection, please read these safety instructions completely before operating the equipment and keep this manual for future reference. The information in this summary is intended for operators. Carefully observe all warnings, precautions and instructions both on the apparatus and in the operating instructions.

Warnings

- Water and moisture - Do not operate the equipment under or near water - for example near a bathtub, kitchen sink, or laundry tub, in a wet basement, or near a swimming pool or in areas with high humidity.
- Cleaning - Unplug the apparatus from the wall outlet before cleaning or polishing. Do not use liquid cleaners or aerosol cleaners. Use a lint-free cloth lightly moistened with water for cleaning the exterior of the apparatus.
- Ventilation - Do not block any of the ventilation openings of the apparatus. Install in accordance with the installation instructions. Never cover the slots and openings with a cloth or other material. Never install the apparatus near heat sources such as radiators, heat registers, stoves, or other apparatus (including amplifiers) that produce heat.
- Grounding or Polarization - Do not defeat the safety purpose of the polarized or grounding-type plug. A polarized plug has two blades with one wider than the other. A grounding type plug has two blades and a third grounding prong. The wide blade or third prong is provided for your safety. If the provided plug does not fit into your outlet, consult an electrician.
- Power-Cord Protection - Route the power cord so as to avoid it being walked on or pinched by items placed upon or against it, paying particular attention to the plugs, receptacles, and the point where the cord exits from the apparatus.
- Attachments - Only use attachments as recommended by the manufacturer.
- Accessories - Most systems should only be used with a cart, stand, tripod, bracket, or table specified by the manufacturer, or sold with the apparatus. When a cart is used, use caution when moving the cart/apparatus combination to avoid injury from tip-over.
- Lightning - Unplug this apparatus during lightning storms or when unused for long periods of time.
- ISDN cables - CAUTION - To reduce the risk of fire, use only No. 26 AWG or larger telecommunication line cord.
- Servicing - Do not attempt to service the apparatus yourself as opening or removing covers may expose you to dangerous voltages or other hazards, and will void the warranty. Refer all servicing to qualified service personnel.
- Damaged Equipment - Unplug the apparatus from the outlet and refer servicing to qualified personnel under the following conditions:
 - When the power cord or plug is damaged or frayed
 - If liquid has been spilled or objects have fallen into the apparatus
 - If the apparatus has been exposed to rain or moisture
 - If the apparatus has been subjected to excessive shock by being dropped, or the cabinet has been damaged
 - If the apparatus fails to operate in accordance with the operating instructions

Contact us

If you have any questions, comments or suggestions, please see the [Online Support](https://www.tandberg.net) service at www.tandberg.net.

It is also possible to send a fax or mail to the attention of:

Product and Sales Support
TANDBERG
P.O. Box 92
1325 Lysaker
Norway
Tel: +47 67 125 125
Fax: +47 67 125 234

Table of Contents

| | | |
|---------|--|----|
| 1 | Introduction..... | 1 |
| 1.1 | At a Glance | 3 |
| 1.2 | Menu Structure | 5 |
| 2 | Installation | 8 |
| 2.1 | Unpacking | 9 |
| 2.2 | Connecting Cables..... | 10 |
| 2.3 | Monitor Configuration..... | 11 |
| 2.4 | System Configuration..... | 12 |
| 3 | General Use | 15 |
| 3.1 | The Welcome Screen (Normal Mode) | 16 |
| 3.2 | The Welcome Screen (Kiosk Mode) | 17 |
| 3.3 | Using the Remote Control..... | 19 |
| 3.3.1 | Navigation | 21 |
| 3.3.2 | Number and Letter keys..... | 22 |
| 3.4 | On-screen Indicators..... | 23 |
| 3.5 | Using the Kiosk Menu | 24 |
| 3.6 | Using the Language Menu..... | 25 |
| 3.7 | Place a Call..... | 26 |
| 3.8 | Receive a Call | 27 |
| 3.9 | End Call..... | 28 |
| 3.10 | Using the Handset | 29 |
| 3.11 | Standby..... | 31 |
| 3.12 | Phone Book - My Contacts | 32 |
| 3.12.1 | Add New Contact..... | 33 |
| 3.12.2 | Edit Contact | 34 |
| 3.12.3 | Delete Contact | 35 |
| 3.12.4 | Copy Contact to My Contacts | 36 |
| 3.13 | Camera Control..... | 37 |
| 3.14 | Dual Stream (DuoVideoTF/H.239)..... | 38 |
| 3.15 | Control Panel | 39 |
| 3.16 | Diagnostics..... | 40 |
| 3.16.1 | System Information | 41 |
| 3.16.2 | Channel Status | 42 |
| 3.16.3 | Call Status..... | 43 |
| 3.16.4 | System Selftest | 44 |
| 3.16.5 | View Administrator Settings | 45 |
| 3.16.6 | IP Address Conflict Check | 49 |
| 3.16.7 | Warnings | 50 |
| 3.16.8 | Text Chat | 52 |
| 3.16.9 | Administrator Settings..... | 53 |
| 3.16.10 | Restart | 54 |
| 3.16.11 | User Guide | 55 |
| 4 | Administrator Settings | 56 |
| 4.1 | General Settings | 57 |
| 4.1.1 | Language | 58 |
| 4.1.2 | System Name | 59 |
| 4.1.3 | International Name..... | 60 |
| 4.1.4 | Auto Answer..... | 61 |
| 4.1.5 | Phone Book Settings | 62 |
| 4.1.6 | External Services Settings..... | 63 |
| 4.1.7 | Permissions | 64 |

| | | |
|--------|--------------------------------|-----|
| 4.1.8 | Screen Settings..... | 66 |
| 4.1.9 | Software Options | 71 |
| 4.1.10 | Date and Time Settings | 72 |
| 4.1.11 | Max Call Length | 73 |
| 4.2 | Menu Settings | 74 |
| 4.2.1 | Input Editor Language..... | 75 |
| 4.2.2 | Menu Timeout In Call..... | 76 |
| 4.2.3 | Balloon Help..... | 77 |
| 4.2.4 | Administrator Password | 78 |
| 4.2.5 | Kiosk Mode Settings | 79 |
| 4.2.6 | Startup | 82 |
| 4.2.7 | Icons..... | 84 |
| 4.3 | Presentation Settings..... | 85 |
| 4.3.1 | Presentation Start | 86 |
| 4.3.2 | H.239..... | 87 |
| 4.3.3 | Startup Video Source..... | 88 |
| 4.3.4 | Presentation Source | 89 |
| 4.3.5 | Snapshot Source | 90 |
| 4.3.6 | Auto-Display Snapshot | 91 |
| 4.3.7 | PIP Appearance..... | 92 |
| 4.3.8 | PIP Placing | 93 |
| 4.3.9 | VNC Settings | 94 |
| 4.4 | Call Quality..... | 95 |
| 4.4.1 | Video Algorithm..... | 96 |
| 4.4.2 | Audio Algorithm..... | 97 |
| 4.4.3 | Natural Video | 98 |
| 4.4.4 | Max Upstream Rate (kbps)..... | 99 |
| 4.4.5 | Video Quality..... | 100 |
| 4.4.6 | Default Call Settings | 103 |
| 4.5 | Audio..... | 106 |
| 4.5.1 | Headset Level Settings | 107 |
| 4.5.2 | Alert Tones and Volume | 108 |
| 4.6 | Video..... | 109 |
| 4.6.1 | MCU Status Line..... | 110 |
| 4.6.2 | Web Snapshots..... | 111 |
| 4.6.3 | Video Name | 112 |
| 4.7 | Security | 113 |
| 4.7.1 | Encryption | 114 |
| 4.7.2 | Encryption Mode | 115 |
| 4.7.3 | Passwords | 116 |
| 4.8 | Network..... | 117 |
| 4.8.1 | ISDN-BRI Settings | 118 |
| 4.8.2 | LAN Settings | 120 |
| 4.8.3 | Network Profiles | 139 |
| 4.8.4 | Restore Default Settings | 140 |
| 5 | Interfaces..... | 141 |
| 5.1.1 | Video | 142 |
| 5.1.2 | Audio | 144 |
| 5.1.3 | Network | 145 |
| 6 | Appendices..... | 146 |
| 7 | Glossary | 172 |

TANDBERG

Compass/Utility **MPX**

1 Introduction

The TANDBERG Compass MXP provides essential video features for face to face communication in public areas with the quality and reliability found in all TANDBERG equipment.

The TANDBERG Utility MXP provides essential video features for face to face communication in rugged environments with the quality and reliability found in all TANDBERG equipment.

Audio Quality

High-performance audio provides a richer, more complete visual communication experience. The MPEG4 AAC-LD standard is used to provide true standards-based CD-quality, stereo audio.

NEW Eliminate disturbance from GSM mobile phones and Blackberry devices

Video Quality

Features which ensure high quality video includes:

- Natural Video[™] which provides a 60 fields per second true interlaced picture.
- H.264 video compression up to 768kbps.

NEW High quality video and native 16:9 formats

Network

The system supports videoconferencing via both IP and ISDN networks. The bandwidth capabilities are:

- up to 768kbps on IP
- up to 384*kbps on ISDN
- SIP support

If channels are dropped during a videoconferencing session, downspeeding[™] automatically maintains connections without interruption.

Security

Secure Conference[™] provides embedded encryption for Point-to-Point calls and ensures both privacy and security.

The system is delivered with integrated Expressway[™] firewall traversal technology. When used together with a TANDBERG Border Controller it enables:

- Secure and seamless traversal of ANY firewall.
- No missing features when traversing the firewall – works with H.264, MPEG4 audio, encryption.
- Outside systems, such as home offices, to be part of the enterprise dial plan.

NEW H.460, ITU Standardized firewall traversal, support

NEW High security network authentication (802.1x)

The TANDBERG videoconferencing system can also be used purely as an audio-bridge (with an ISDN connection).

Presentations

The Natural Presenter Package (NPP), makes it possible to receive presentations and comprises:

- Digital Clarity^{TF} which provides presentations of exceptionally high quality resolution video.

Users can display video and presentations in the best layout based on the situation. Supported screen layouts are:

- Picture in Picture
- Picture outside Picture
- Side by Side

User interfaces

A web-interface to the codec provides:

- System management, diagnostics and software uploads.
- Text chat/closed captioning.
- Unicast Streaming – which allows broadcasting of audio/video via an IP network to a single compatible client (RealMedia™ or Apple Quicktime™) or streaming server.

The On-Screen Menu:

- Easy interface for first-time users with symbols and descriptions
- Builds upon the familiar current interface

NEW Enhanced language support with Asian and non-Latin character text input in the menu for local language system names

NEW Simplified on-screen menu, Kiosk Mode, designed for public environments.

Interoperability

The TANDBERG Compass MXP and Utility MXP are worldwide compatible with other standards-based videoconferencing systems.

* - optional feature. To check which options are installed, select Control Panel - Diagnostics - System Information in the menu.

^{TF} - TANDBERG First

1.1 At a Glance

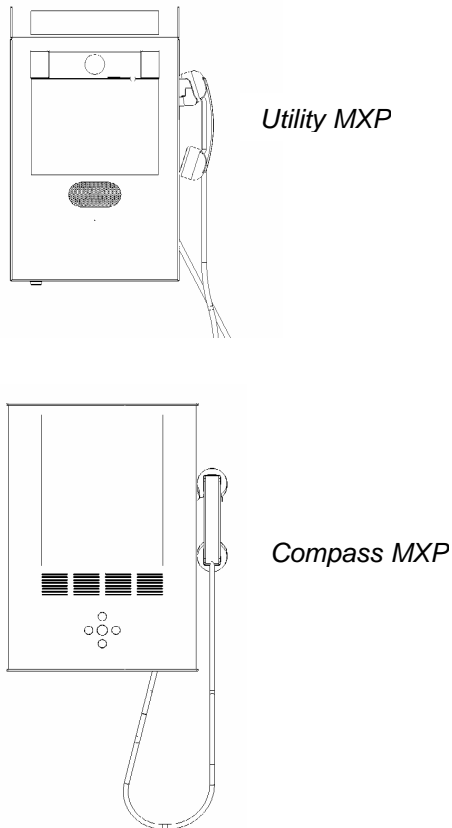


Figure 1-1. TANDBERG Utility MXP and Compass MXP

Camera

The camera is an integrated part of the unit and is centrally placed just above the monitor. On the Utility MXP it is possible to close the camera (for privacy) by sliding across a door.

Monitor

The Digital LCD displays the far-end videoconferencing site in addition to the menu.

Codec

The codec is the heart of the system. Its main task is the compression of outgoing video, audio and data, the transmission of this information to the far end and the decompression of the incoming information - the name codec comes from a combination of the two words compression and decompression.

Microphone

The microphone is integrated and located at the edge on the left hand side of the unit.

Handset

For privacy, both Utility MXP and Compass MXP are delivered with a handset located on the right hand side of the unit. Lifting the handset from the cradle automatically toggles between internal microphone/loudspeaker and the handset.

Lamp

A LED (light emitting diode) lamp is integrated into the top of the unit and gives optimally directed additional illumination to the users face. This improves the quality of the image transmitted to the

far end. The power output of the lamp can be varied upon installation (or by service personnel thereafter), and can be adjusted from zero to full power.

Remote Control

The remote control is only delivered with the TANDBERG Utility MXP.

The remote control is located inside the locked cabinet on the Utility MXP, and is intended for system setup when using ISDN. The reception of the remote control signal is limited to a small hole directly under the speaker mesh on the Utility MXP.

The remote control is used to control all functions of the system. The remote control uses 4 AAA batteries. The system will tell you when batteries are running low. Change the batteries at the back of the remote control.

The reach of the remote control signal is around 20 meters. For users sitting in an open plan office, this can cause problems. Use the little, white switch placed under the batteries to change the reach of the signal from 20 meters to 2 meters. This will prevent you from unintentionally controlling another video system, when you control your own system.

1.2 Menu Structure

The menu structure is divided in three. The Kiosk Menu, which is available for all users when Kiosk mode is activated, the Main Menu, which contains all functionality of the system and the Administrator Menu that contains all the settings of the system.

The menu structure for Kiosk Menu is shown below.

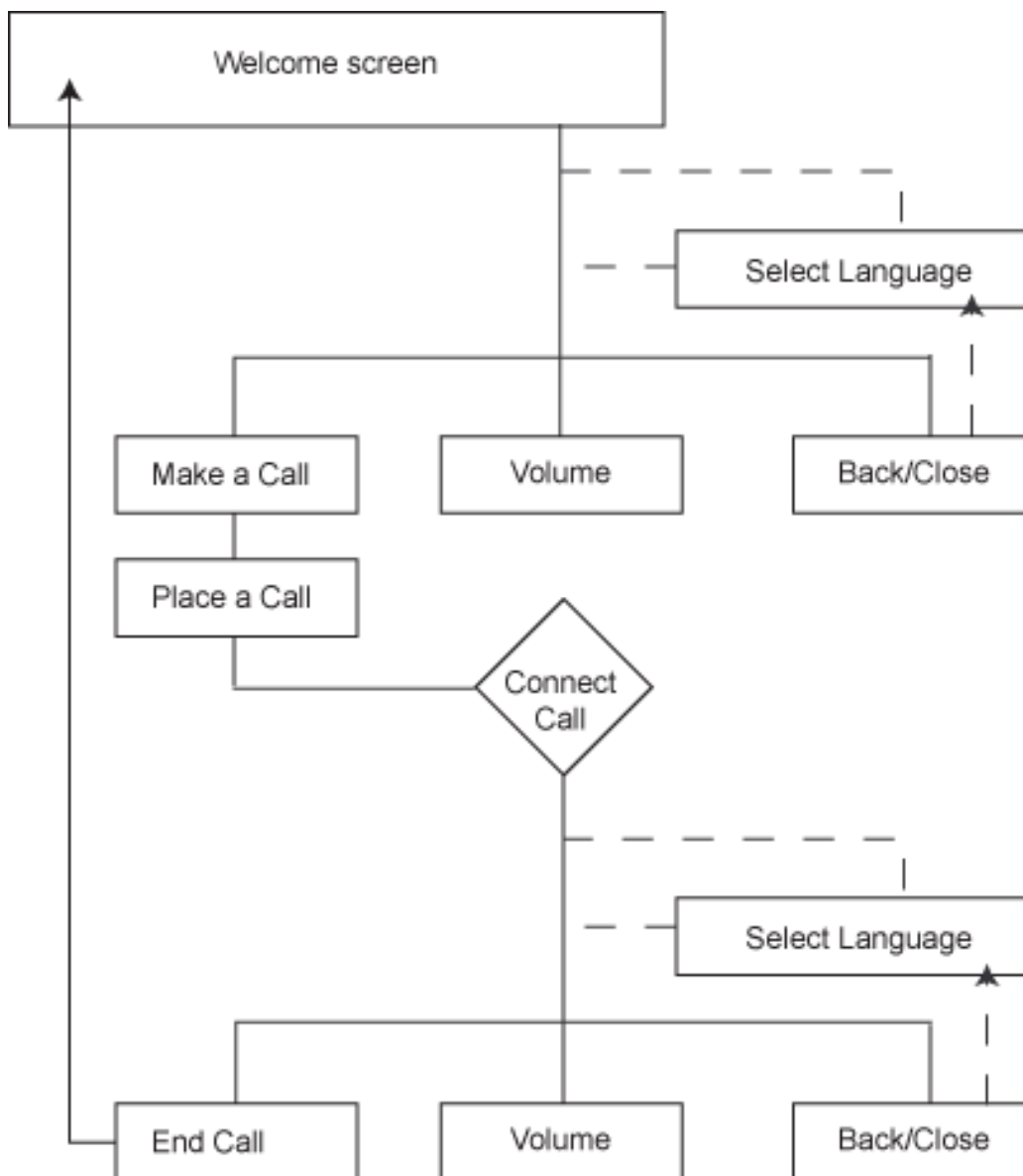


Figure 1-2. Kiosk menu.

The Main Menu and Administrator Settings are only accessible when Kiosk Menu is deactivated. Select Control Panel and Administrator Settings from the Main Menu. Making changes to the Administrator Settings will change the behavior of the system.

The menu structure for Main Menu and Administrator Settings is shown below.

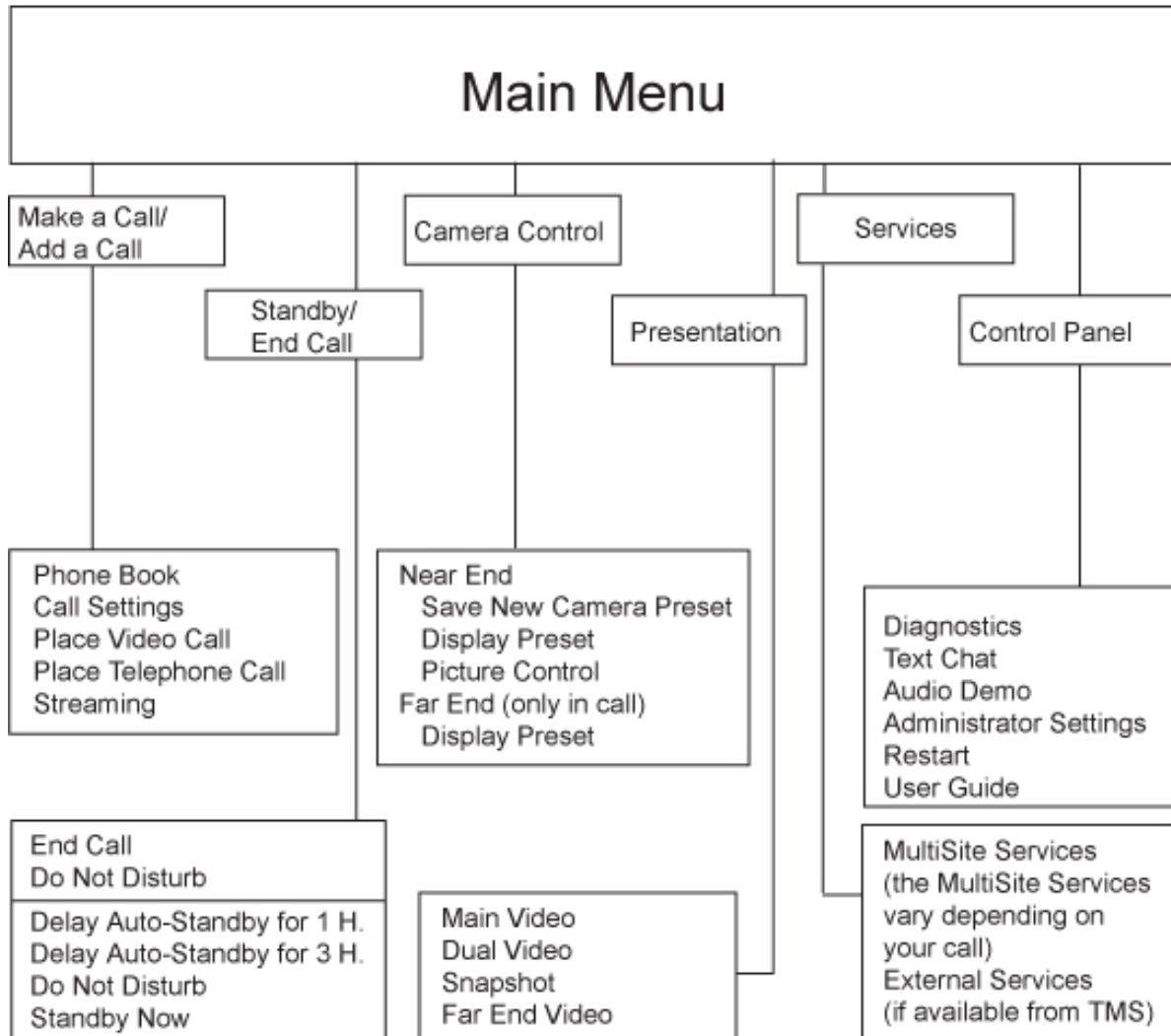


Figure 1-3. Main menu.

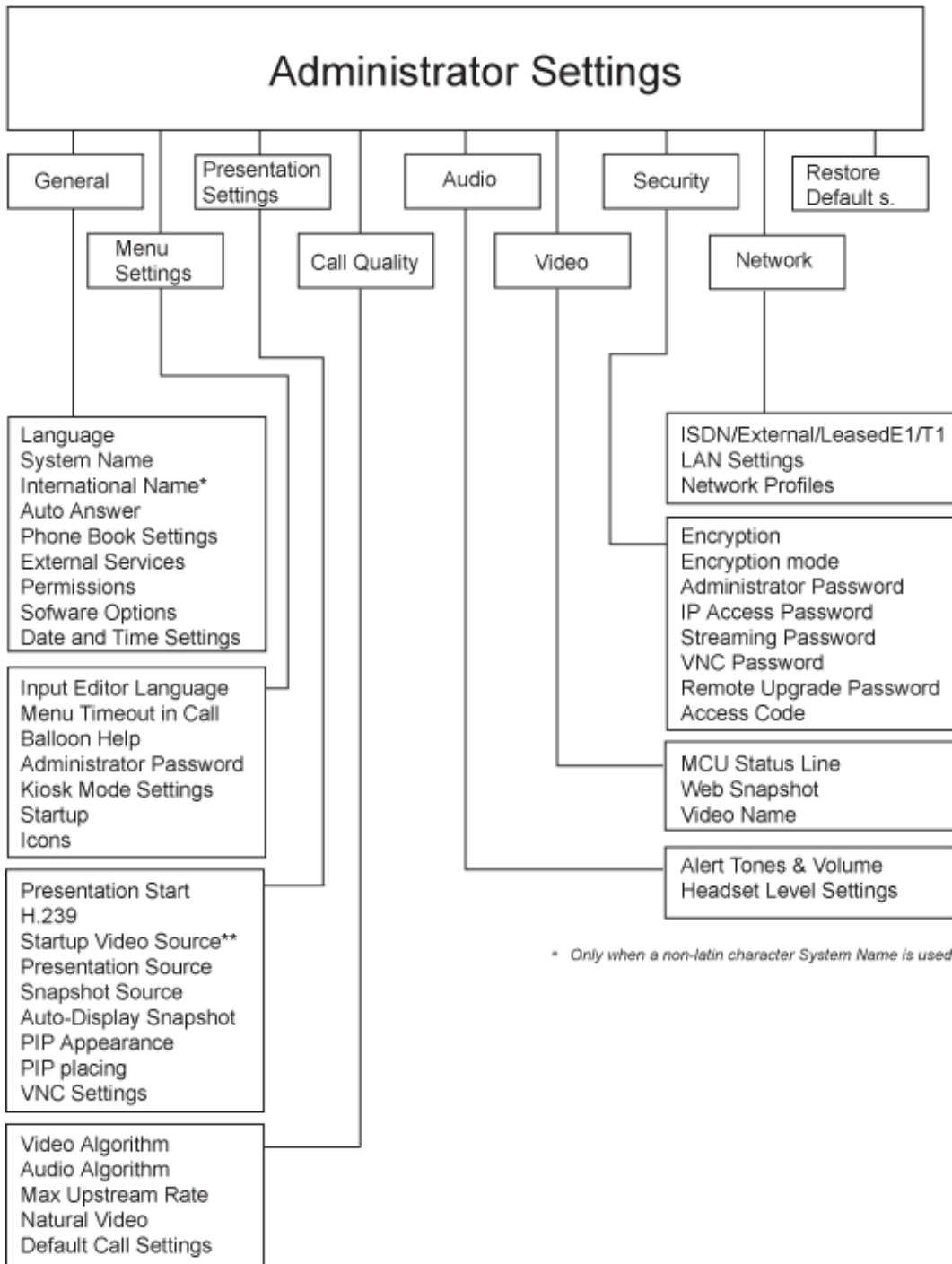


Figure 1-4. Administrator Settings menu.

Note that the system features and menu settings may vary depending on network selection and software package.

2 Installation

Precautions:

- Never install communication wiring during a lightning storm.
- Never install jacks for communication cables in wet locations unless the jack is specifically designed for wet locations.
- Never touch uninstalled communication wires or terminals unless the telephone line has been disconnected at the network interface.
- Use caution when installing or modifying communication lines.
- Avoid using communication equipment (other than a cordless type) during an electrical storm. There may be a remote risk of electrical shock from lightning.
- Do not use the communication equipment to report a gas leak in the vicinity of the leak.
- Always connect the product to an earthed socket outlet.
- The socket outlet shall be installed near to the equipment and shall be easily accessible.
- 1TR6 network type is not approved for connection directly to the telecommunications network. This network type is only to be used behind a PABX.

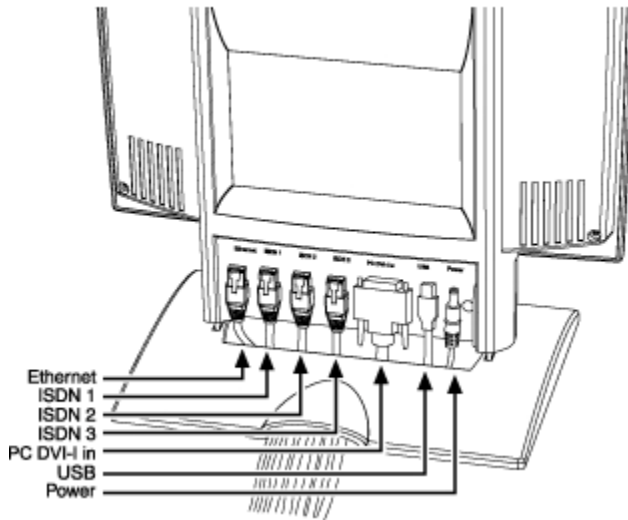
This product complies with directives: LVD 73/23/EC, EMC 89/366/EEC, R&TTE 99/5/EEC

2.1 Unpacking

The TANDBERG Compass MXP and Utility MXP consist of the following items:

- Videoconferencing system with built-in camera, handset and lamp
- Remote Control (Utility MXP only)
- Batteries
- User Manual on CD
- Integrated power supply
- Cables
- High security keys

2.2 Connecting Cables



1. Power cable

- Connect the power cable from the wallplate to the power supply.
- Note: The connection of main electrical supply to the wallplate is described in the Installation Sheet.

2. ISDN cables

- Connect the ISDN cables to the ISDN connectors on the system.
- Connect the ISDN cables to the ISDN sockets (S/T-interface) provided by the service provider. Your main number will be the number associated with the socket to which ISDN cable number 1 is connected.

North America: The system does not have a built-in network terminator. If the wall socket provides an ISDN U-interface, an NT1 between the system and the ISDN line is needed, see [Appendix 8](#) for details.

Note! Write down the numbers associated with each of the ISDN lines. They are needed for configuring the system

Figure 2-1. Connectors.

3. LAN cable

To use the system on LAN, connect a LAN cable from the Ethernet' connector on the system to the LAN.

2.3 Monitor Configuration

Power on

Switch the system on by connecting the power cable from the wallplate to the integrated power supply. After the system has performed a self-test routine, the main menu will be displayed on the monitor of the Utility MXP (units are shipped with Kiosk Mode OFF). The Compass MXP is shipped with Kiosk Mode ON, and the monitor will therefore display the Kiosk Menu.

2.4 System Configuration

The Compass MXP and Utility MXP have default settings from the factory enabling initial use. However the system must be configured for each installation. Configuration settings can be made via the system menu using the remote control, or more easily via telnet or web interface using IP. The following screen pictures are based on remote control access directly on the system, whilst the telnet or web interface gives a different visual layout but with the same configuration possibilities. Refer to Appendix 7 Web Interface for more details.

Navigate through the menu system using the arrow keys and OK. Remember to press the Save button on the bottom of each menu to save the changes. Press Cancel (x) to return to the previous Menu. See [General Use](#) for more information about how to use the menus and the remote control.

General configuration:

1. Open the General Settings menu

Press OK/Menu to open the Main Menu, if not already displayed. Select Control Panel - Administrator Settings - General to open the General Settings menu.



Figure 2-2. General settings menu.

2. Language

Press OK in the Language field and select the wanted language from the list. Note: This General / Language governs the language on the Setting and Screen Menus when in normal mode. If multiple languages are desired in Kiosk mode then this is defined within the Kiosk settings menu.

3. System Name / International System Name

Enter a name in the System Name field using the number keys on the remote control, in the same way as with a mobile or cellular phone. Hold down the # key for one second to switch back and forth from numbers to alpha characters. The International System Name field is only visible if the System Name contains supported Asian and non-Latin text input.

4. Auto Answer, Phone Book Settings, External Services Settings and Permissions

Utility MXP requires Auto Answer to be activated, it is also recommended for Compass MXP. Otherwise these settings may be left unchanged if no special needs are required. See chapter [General Settings](#) for more information.

5. Screen Settings

The settings may be left unchanged if no special needs are required. The display layout may be changed at any time using the Layout button on the remote control.

6. Software Options

To activate options for the system, a new option key must be entered in the Software Options menu (see paperwork accompanying the system). The Presenter option key should be entered under "New Option Key". Any bandwidth option key should be entered under "New Bandwidth Key". For more information on these options, please contact your TANDBERG representative.

7. Date and Time Settings

Select your preferred Date and Time Settings.

8. Save changes

Remember to save any changes made in a menu by selecting the Save button on the menu line and pressing OK.

Network configuration:

1. Open the Network menu

Press OK/Menu to open the Main Menu, if not already displayed. Select Control Panel - Administrator Settings - Network to open the Network menu.

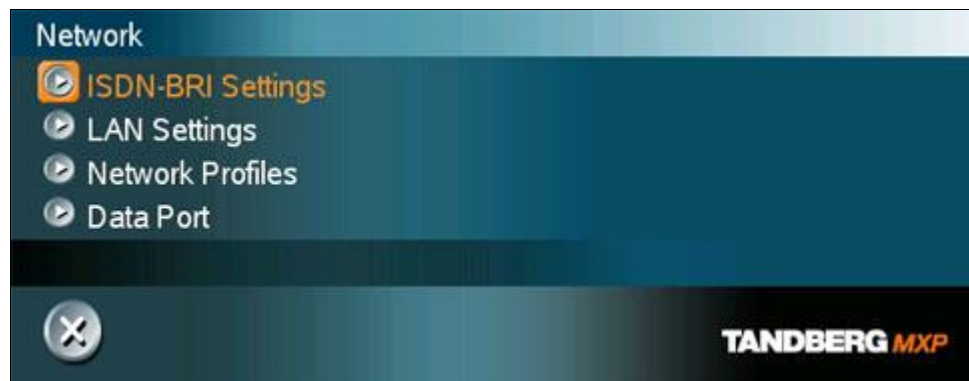


Figure 2-3. Network settings menu.

2. ISDN configuration

Set the Network type to the desired network. Specify the settings for the selected network in the relevant menu. For details, follow the instructions in [ISDN-BRI Settings](#).

3. LAN configuration

Select LAN Settings in the Network menu and specify the necessary LAN settings according to the instructions from your LAN administrator. For details, follow the instructions in [LAN Settings](#). If there is an H.323 Gatekeeper present on your LAN, refer to [H.323 Settings](#) as well.

4. Network Profiles

Please refer to [Network Profiles](#) for details

5. Data Port

Not available on this product.

6. Save changes

Remember to save any changes made in the menu by selecting the Save button on the Menu line and pressing OK.

Kiosk Mode Settings:

Press OK/Menu to open the Main Menu, if not already displayed. Select Control Panel - Administrator Settings – Menu Settings – Kiosk mode Settings to open the Kiosk Mode Settings menu.

The default Kiosk Mode settings for the Utility MXP are:

- Language menu **OFF**
- Available languages check boxes with all languages*
- Auto dial **ON**
- Allow use of Remote Control **YES**
- Phone Book **Local**
- Kiosk menu **OFF**

After having configured the settings of the Utility MXP, you must activate Kiosk mode by setting Kiosk Mode til ON. Be aware that you cannot deactivate kiosk mode again through the menu, but only through the web interface, telnet or the remote control.

The default Kiosk Mode settings for the Compass MXP are:

- Language menu **OFF**
- Available languages check boxes with all languages*
- Auto dial **ON**
- Allow use of Remote Control **NO**
- Phone Book **Local**
- Kiosk menu **ON**

After having configured the settings of the Compass MXP, you must activate Kiosk mode by setting Kiosk Mode til ON. Be aware that you cannot deactivate kiosk mode again through the menu, but only through the web interface, telnet or the remote control.

See [Kiosk Mode Settings](#) for more details.

3 General Use

Wake up the system

When the system is not in use, it is in standby mode and the screen is black. Wake up the system by picking up the handset. An incoming call or pressing any key on the Compass MXP will also wake up the system.

Quick Key for IP Address

If the IP address of the system has been mislaid or forgotten it can be shown temporarily on the screen by pressing the central button on the Compass MXP for at least 5 seconds, until the address appears on the screen. On the Utility MXP the remote control can be removed from the cabinet and the OK button pressed in the same manner.

Quick Key to Deactivate Kiosk Mode

If it is required to deactivate the Kiosk Mode without using the telnet or web interface the following must be performed using the remote control stored inside the cabinet. This is only possible if the setting Allow Use of Remote Control has been saved as ON. Please refer to later chapters on where the remote control should be directed to enable IR reception.

- Press 5 times on the Phone Book symbol then once on the number 3.

3.1 The Welcome Screen (Normal Mode)

When the system is switched on, the normal welcome screen will be displayed. The welcome screen presents the menu and displays your main camera image in the background (main camera is system default). The ISDN/IP numbers and the system name are displayed in the upper right corner. The ISDN Number and IP Number are the dial-in numbers of the system.

The welcome screen provides you with the most important system information:

- System Name
- Your ISDN Number
- Your IP Address or IP Number

It is possible to customize the text on the welcome screen. See [Menu Settings](#) for how to edit welcome text.



Figure 3-1. The Welcome Screen in normal mode.

3.2 The Welcome Screen (Kiosk Mode)

When the system is switched on and Kiosk Mode is ON and Show Menu is ON the welcome screen will be displayed. The welcome screen presents the menu and displays your main camera image in the background.

An additional welcome screen can be shown if Language Menu is ON. The normal welcome screen will appear after the language has been selected.

It is possible to customize the text on the welcome screen. See [Menu Settings](#) for how to edit welcome text.



Figure 3-2. The Welcome Screen in Kiosk Mode.



Figure 3-3. Language selection menu.

3.3 Using the Remote Control

The Utility MXP is only controlled by the handset and from the far end. The system is not designed to be controlled by a remote control accessible to the user. The remote control is only for system setup and maintenance by authorized personnel. The IR receiver is a small hole just below the speaker grill, the remote control must be held directly in front of the small hole.

The Compass MXP is controlled by the handset and the five buttons located on the cabinet. The system is not designed to be controlled by a remote control accessible to the user. There is no remote control delivered with the Compass MXP. System set-up must be done via telnet or web interface.

Think of the remote control as a mobile phone with number keys and call keys. Use the arrow keys and OK to navigate the menu. The system's most commonly used functions are also accessible directly from the remote control.

The TANDBERG remote control (TRC 3)



1. Mic Off turns your microphone on and off.
2. Arrow keys are used for navigation in the menu and for moving the camera* when the menu is hidden, see [Navigation](#).
3. Volume + and – adjusts the Codec volume only and not the monitor's volume.
4. The Layout key toggles between full screen and different display layouts
5. Cancel takes you back one step in the menu system. Use Cancel to delete characters in an input field, see [Navigation](#).
6. Press the Call key to place a call, see [Place a Call](#).
7. Camera presets* define specific camera positions. Move the camera to the desired position and press and hold a number key for 1 second to save the current camera position to that number key. To activate a preset whilst in a call, simply press and release that number key.
8. Snapshot takes a snapshot of your video only while you are in a call.
9. The Presentation key switches to a predefined presentation source. If the Presentation key is held down for 1 second then the Presentation video sources menu will appear.
10. Press OK/Menu to show the menu and to select menu items, see [Navigation](#).
11. Use Zoom + and – to zoom the camera in and out.*

12. Selfview displays your outgoing video. Press Selfview again to turn selfview off.
13. Use the Phone Book to store and recall video contacts for easy placement of calls, see [Phone Book](#).
14. Use the red End Call key to end the current call. Pressing this key when not in a call will place the system in Standby mode, see [End Call](#) and [Standby](#).
15. Number/Letter keys function in the same manner as with a mobile or cellular phone, see [Number and Letter keys](#).
16. Press Touch tones when you are in a call and need to dial extension numbers etc. (instead of presets). Press the OK/Menu button to exit Touch Tones.

Figure 3-4. Remote Control.

*This does not apply to all systems with small integrated cameras.

3.3.1 Navigation



Arrow keys and OK

Navigate in the menu with the arrow keys on the remote control. The orange selector on screen shows the selected item. Press OK to select.



Cancel key

In the main menu, pressing Cancel (X) will hide the menu. If the menu is hidden, bring it back with OK. In other menus, pressing Cancel (X) takes you one step back. In an input field, pressing Cancel (X) will delete characters/numbers to the left.



Back/Cancel button

The X button in the menu corresponds with the X key on the remote.

3.3.2 Number and Letter keys

When accessing an input field where letters are required, the system automatically goes to letter mode. Writing letters works like on a mobile phone. Press the key that corresponds to your desired letter. Press the key as many times as needed to get the right letter. Change to lower or back to upper case letters with the a/A key, and space with the 0 _ key.

To write numbers in a text input field, press the button through all the letters. Press once more and the number will appear.

Example: How do I write "System 123" in the System Name input field (in General in Administrator Settings)?

Press the 7-key four times to get an "S".
Press the #-key once to switch between upper case and lower case letters.
Press the 9-key three times to get a "y".
Press the 7-key four times to get an "s".
Press the 8-key once to get a "t".
Press the 3-key twice to get an "e".
Press the 6-key once to get an "m".
Press the 0-key once to get space.
Press the 1-key three times to get a "1".
Press the 2-key four times to get a "2".
Press the 3-key four times to get a "3".

3.4 On-screen Indicators

The system has a number of icons signaling different settings:



Microphone Off

This indicator is shown when the microphone is turned off. Press the Mic off button again to turn the microphone back on, see [Mic Off](#) for details.



Volume Off

This indicator is shown when the volume is turned off. Press Volume + to turn the volume back on, see [Volume + and -](#) for details.



Secure Conference, AES

This double padlock indicator is shown when AES encryption (Secure Conference) is active, see [Security](#) for details.



Secure Conference, DES

This padlock indicator is shown when DES encryption (Secure Conference) is active, see [Security](#) for details.



Not Secure Conference

This open padlock indicator is shown during the initialization phase for AES or DES encryption. During this period the call is not secure, see [Security](#) for details.



Warning

This indicates that the system has detected a warning. Select the icon and press OK to see details on the warning. Please see [Warnings](#) for a list of possible warnings.



Bad Network

This indicator appears if the system detects network anomalies like packet loss, jitter etc., during a call. Open the menu by pressing the OK/Menu button and select the warnings icon too see details.

3.5 Using the Kiosk Menu



Figure 3-5. Kiosk Menu.

Press the left / right buttons on the Compass MXP to highlight the appropriate icon, then press the central button to confirm selection.

The menu contains the following items:-

- [Place a Call](#)
- Volume
- Close

3.6 Using the Language Menu



Figure 3-6. Language selection menu.

The language selection menu is an optional menu, and is only active if Language Menu is ON in the Kiosk Settings.

Press the left / right buttons on the Compass MXP to highlight the appropriate icon, then press the center button to confirm selection.

3.7 Place a Call

Autodial = ON

If Autodial is activated on either the Utility MXP or Compass MXP then a call can be placed by simply lifting the handset from the cradle. The unit will then automatically call through the list of names held in either the Local or Global phone book. If no connection is made after 7 seconds the unit will proceed to the next name on the list. If the list is emptied without any connection the system will repeat through the list.

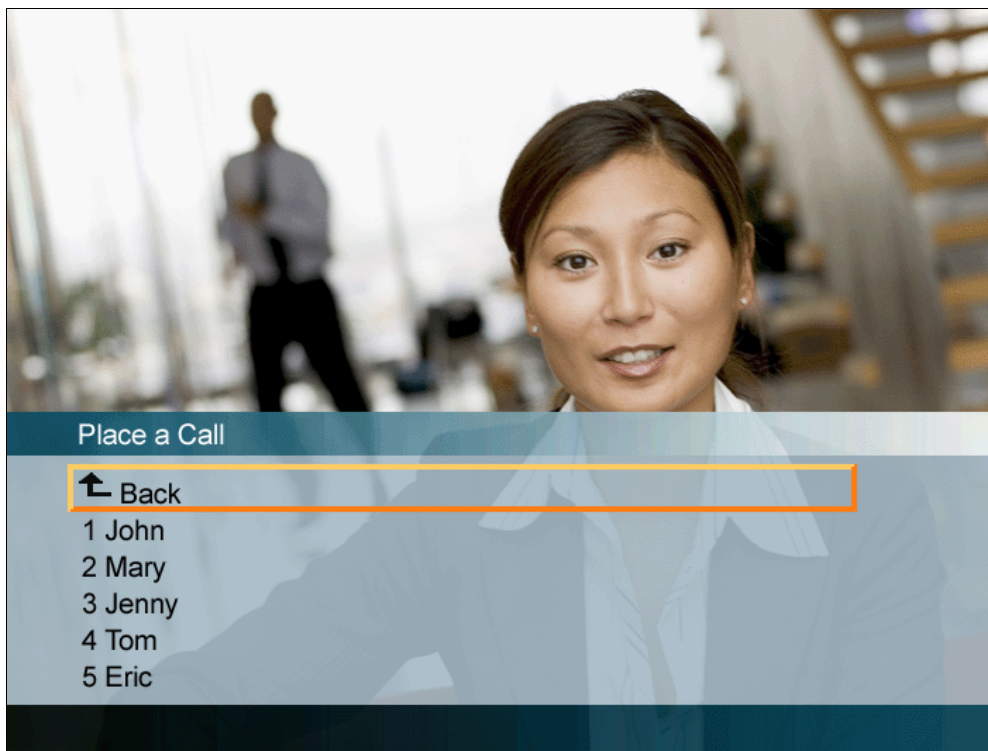


Figure 3-7. Phone Book.

Autodial = OFF

If Autodial is not activated on the Compass MXP then it is possible to place a call using the five buttons to navigate through the kiosk menu. To place a call on the Compass MXP first select Place a Call on the main Kiosk Menu using the left / right buttons, then press the central button to confirm the selection.

Then select the appropriate person or service to call by pressing the up / down buttons, and center button to confirm the selection.

Selecting and confirming Back will return the user to the main Kiosk Menu.

3.8 Receive a Call

How to answer an incoming call with Auto Answer = ON

- If Auto Answer is activated then it is not necessary to lift the handset, the call will automatically be answered and connected to the built in microphone and speaker, see [Auto Answer](#) for details.
- If wishing privacy within an Auto Answered call the user can pick up the handset, which will automatically switch the system over to the handset microphone and speaker.

How to answer an incoming call with Auto Answer = OFF

- To accept incoming calls on either the Compass MXP or the Utility MXP simply lift the handset.
- On the Compass MXP it is also possible to answer by pressing the middle of the five buttons.

How to reject an incoming call:

- To reject an incoming call on the Compass MXP select the Reject icon using the left / right arrow buttons then press the central button to confirm.
- It is not possible to reject a call on the Utility MXP.

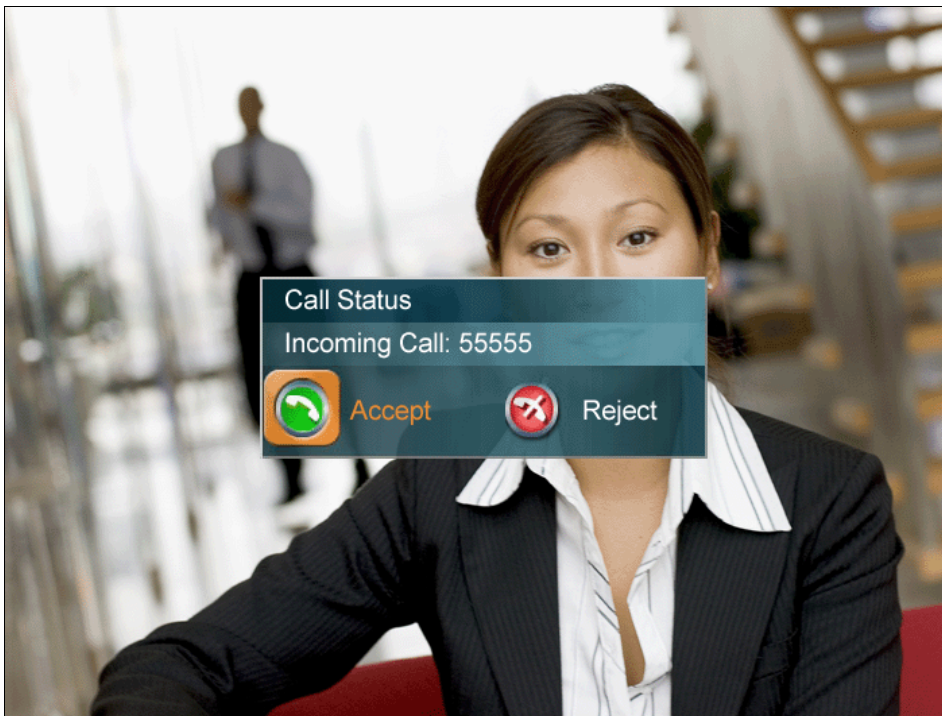


Figure 3-8. Answering a call.

When idle, the system will accept all incoming calls as long as Incoming Telephone Calls are set to On, see [Permissions](#) for details.

3.9 End Call



Figure 3-9. Ending a call.

How to end an Auto Dial call

- If Auto Dial is activated on either the Compass MXP or Utility MXP then replacing the handset onto the cradle will end the call

How to end a non Auto Dial call (only possible on Compass MXP)

- To end a call press the central button on the Compass MXP cabinet to display the on-screen menu, then press the central button again to confirm the End Call selection

How to end an Auto Answer call

- If the handset has been used on either the Compass MXP or Utility MXP together with Auto Answer = ON then replacing the handset will not end the call.
- Only the far end can end an Auto Answered call.

3.10 Using the Handset

The handset has different functions depending on the setup of the unit, and depending on if the unit is outside or inside a call.

- When outside a call and with autodial activated, lifting the handset will waken the system from standby mode and will start to dial through the names stored in My Contacts. Replacing the handset onto the cradle will end the call.
- When outside a call and with autodial deactivated, lifting the handset will waken the system and show the Kiosk Menu if activated, otherwise self view will be shown. Replacing the handset onto the cradle will have no consequence.
- When an incoming call is ringing on the system and with auto-answer deactivated, lifting the handset will accept the call. Replacing the handset onto the cradle will end the call.
- When incoming call is ringing on the system and with auto-answer activated, lifting the handset after the call has been auto-answered will switch between built-in speaker & microphone and the handset. Replacing the handset onto the cradle after an auto-answered call will not end the call, but will switch back to the built-in speaker and microphone.
- When inside an existing call lifting the handset switches between the built-in loudspeaker and microphone and those contained in the handset. This feature is the same for both the Utility MXP and the Compass MXP. The switching is a toggling action, therefore upon replacing the handset on the cradle the unit will switch back to the built-in speaker and microphone.

The above description of handset functions can also be related to the actual units and their default settings for Auto Answer and Auto Dial.

Utility MXP

(Default settings: Auto answer is ON and Auto dial is ON.)

Lifting the handset outside a call will wake up the system and start to dial the numbers listed in the phone book. Thereafter, replacing the handset will end the call.

An incoming call will automatically connect the call with speaker active. Lifting the handset in a call will switch from speaker mode to handset mode. If you hang up in a call, it will switch to speaker mode again.

Compass MXP

(Default settings: Auto answer is OFF and Auto dial is ON)

Lifting the handset outside a call will wake up the system and start to dial the numbers listed in the phone book. Thereafter, replacing the handset will end the call.

An incoming call will be connected by lifting the handset. Thereafter, replacing the handset on the cradle will end the call. Note: If an incoming call is answered by pressing the central button,

TANDBERG COMPASS MXP / UTILITY MXP

subsequent lifting of the handset will switch between speaker mode and handset mode, and replacing the handset will not end the call

Alternative Compass (example)

(Settings: Auto answer is OFF and Auto dial is OFF)

Lifting the handset outside a call will wake up the system and you will see self view and the Kiosk menu on the screen. Thereafter replacing the handset will make no change.

3.11 Standby

The system will automatically go to Standby mode when it is not in use. In standby mode, the screen and LED lamp are black. It is however still possible to receive incoming calls.

How to turn off the standby mode:

- When the system is in standby, pick up the handset (on Compass MXP and Utility MXP) or press any of the buttons on the Compass MXP to activate the system again.

The standby mode of the system should be used if the system is to be left idle.

3.12 Phone Book - My Contacts

The Phone Book My Contacts is a list of contacts that can be stored locally on the system. Within the normal operating mode (outside of Kiosk Mode) the list is known as My Contacts, and within Kiosk Mode it is represented only as a list on the Make a Call screen.

The list of numbers within My Contacts is available for both Auto Dial (if activated) and for ringing via the Make a Call menu (only possible on the Compass MXP).

It is possible to add new contacts and edit or delete existing contacts. My Contacts can store up to 200 contacts.

It is possible to sort the names into a specific sequence by adding digits (e.g. 00-99) as a prefix to the name. The list is sorted alphanumerically.

The settings box below depicts the My Contacts list when the Kiosk Mode is deactivated, i.e when in set-up mode.

Note: With regard to Auto Dial and Make a Call, it is possible to select which Phone Book the system uses; either the locally stored My Contacts or the list available via LAN and TMS known as Corporate / Global Directory.

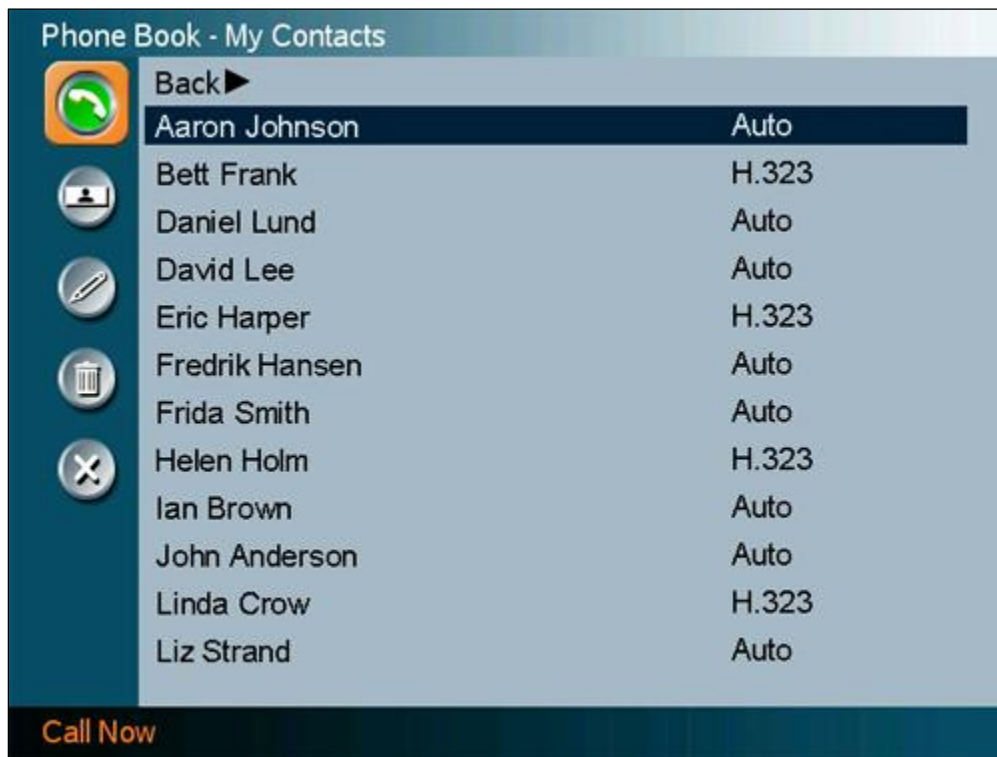


Figure 3-10. Phone Book – My Contacts.

3.12.1 Add New Contact

The Add New Contact function is available from [My Contacts](#).

It is recommended to add new contacts remotely using the IP address and the web-interface or telnet.

To perform the following using the remote control the Kiosk Mode must first be deactivated. This is done via the telnet or web-interface, or by pressing 5 times on the Phone Book symbol then once on the number 3 on the remote control. The remote control can be directed to the inside lower edge of the Compass MXP cabinet (i.e. the unit must be temporarily removed from the wallplate). On the Utility MXP the remote control can be held directly in front of the small hole just under the speaker grill.

Add a new contact to My Contacts by:

1. Select the New Contacts button to open the New Contacts dialog box.
2. Enter Name by using the letter keys on the remote control. Input will automatically be interpreted as letters. Toggle between capital letters and small letters by pressing the # button on the remote control. The maximum name length is 30 characters. For numbers, press the # button for one second.
3. Enter Number by using the number keys on the remote control. Input will automatically be interpreted as numbers. The maximum number length is 60 numbers. Use a star as separator in IP addresses. For letters, press the # button for one second.
4. Alter the default setting of Call Type if necessary.
5. Alter the default setting of Network if necessary.
6. Alter the default setting of Bandwidth if necessary. For bandwidth 2x64 kbps or 2x56 kbps, two numbers are required, see Default Call Settings for more details.
7. Alter the default setting of Restrict (56k) if necessary.
8. Press OK to save.

Figure 3-11. Add New Contact

3.12.2 Edit Contact

The Edit Contact function is available from [My Contacts](#).

It is recommended to add new contacts remotely using the IP address and the web-interface or telnet.

To perform the following using the remote control the Kiosk Mode must first be deactivated. This is done via the telnet or web-interface, or by pressing 5 times on the Phone Book symbol then once on the number 3 on the remote control. The remote control can be directed to the inside lower edge of the Compass MXP cabinet (i.e. the unit must be temporarily removed from the wallplate). On the Utility MXP the remote control can be held directly in front of the small hole just under the speaker grill.

How to edit a contact in the Local Phone Book:

1. Select the contact that is to be edited.
2. Press the left arrow on the remote control, followed by the down arrow until the Edit Contact icon is selected.
3. The current settings for this contact are displayed in a dialogue box. Alter the wanted settings.
4. Press OK to save.



Figure 3-12. Edit Contact.

3.12.3 Delete Contact

The Delete Contact function is available from [My Contacts](#).

It is recommended to add new contacts remotely using the IP address and the web-interface or telnet.

To perform the following using the remote control the Kiosk Mode must first be deactivated. This is done via the telnet or web-interface, or by pressing 5 times on the Phone Book symbol then once on the number 3 on the remote control. The remote control can be directed to the inside lower edge of the Compass MXP cabinet (i.e. the unit must be temporarily removed from the wallplate). On the Utility MXP the remote control can be held directly in front of the small hole just under the speaker grill.

How to delete a contact:

1. Select the contact that is to be deleted.
2. Press the left arrow on the remote control, followed by the down arrow until the Delete Contact icon is selected. The Delete Contact dialogue box is displayed.
3. Confirm by pressing the OK button again.

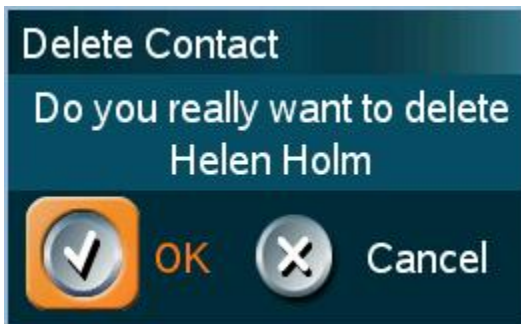


Figure 3-13. Delete Contact.

3.12.4 Copy Contact to My Contacts

It is recommended to add new contacts remotely using the IP address and the web-interface or telnet.

To perform the following using the remote control the Kiosk Mode must first be deactivated. This is done via the telnet or web-interface, or by pressing 5 times on the Phone Book symbol then once on the number 3 on the remote control. The remote control can be directed to the inside lower edge of the Compass MXP cabinet (i.e. the unit must be temporarily removed from the wallplate). On the Utility MXP the remote control can be held directly in front of the small hole just under the speaker grill.

The Copy Contact to My Contacts function is available from the Last Number Dialed, Missed Calls, Call History and Global Contacts folders, see [Phone Book](#) for details.

It may be wise to copy contacts that are often used to My Contacts. Note that the local copy will not be updated if the Global Contacts are updated from the management system.

How to copy a contact from the Global Phone Book to the Local Phone Book:

1. Select the contact to be copied to My Contacts.
2. Press the left arrow on the remote control, followed by the down arrow until the Copy Contact to My Contacts icon is selected.

A message box telling that the operation was successful will be displayed.

3.13 Camera Control

The camera on the TANDBERG Compass MXP and Utility MXP is fixed and cannot be controlled by the user. The focus is pre-adjusted from the factory to suit a normal face to face call. No user adjustment is possible.

3.14 Dual Stream (DuoVideoTF/H.239)

Dual Stream is standard on the Utility MXP and Compass MXP. H.239 is the new ITU standard defining how to send two video sources simultaneously.

With Dual Stream you have the opportunity to receive two different live video streams simultaneously, main video and one additional source. This is handy when receiving a presentation. You see the live presentation and the live video of the presenter simultaneously. When the far end discontinues the Dual Stream the Utility MXP or Compass MXP will switch over to single stream.

It is not possible to send a Dual Stream from the Utility MXP or Compass MXP.

Dual Stream and Bandwidth

Using Dual Stream, the quality automatically downspeeds to the optimal bandwidth. This means that you need higher quality to allocate enough bandwidth for the two video streams. Dual Stream borrows bandwidth from main video. When Dual Stream is closed, the bandwidth is returned to the main video.

3.15 Control Panel

The control panel is only available when Kiosk Mode is deactivated.



Figure 3-14. Control Panel menu

The Control Panel contains the features:

- [Diagnostics](#)
- [Text Chat](#)
- Audio Demonstration*
- [Administrator Settings](#)
- [Restart](#)
- [User Guide](#)

* Audio Demonstration is not available on this product.

3.16 Diagnostics

The diagnostics panel is only available when Kiosk Mode is deactivated.

Diagnostics allows testing of individual system components and displays the current system settings.

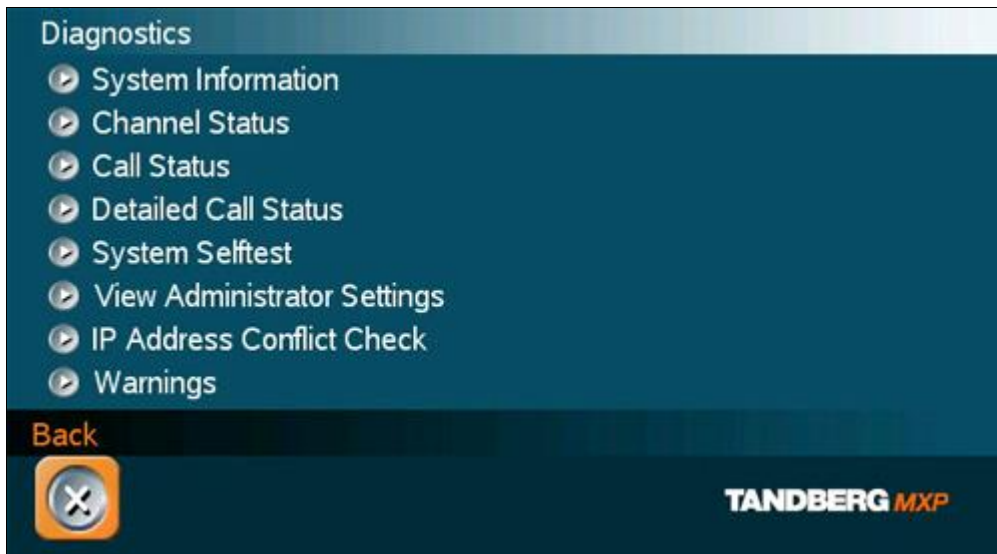


Figure 3-15. Diagnostics menu.

Diagnostics contain:

- [System Information](#)
- [Call Status](#)
- [Channel Status](#)
- [System Selftest](#)
- [View Administrator Settings](#)
- [IP Address Conflict Check](#)
- [Warnings](#)

3.16.1 System Information

Select System Information to view system numbers, line status, software version, hardware serial number and other useful information. Press arrow key up and down to scroll in the System Information list.

System Information contains:

| System Name | Software Version | Network | Hardware Serial Number |
|---|---|----------------------------------|-------------------------------|
| My ISDN Number My IP Number My IP Address | Internal Test Software Options installed | Lines active Lines not active | MAC address Ethernet Speed |

Table 1. System Information.

Note that the serial number is also found on a sticker on the system. It is essential for identifying the system when it comes to service contracts or other support activities. The serial number format is xx.xxxxx.

3.16.2 Channel Status

Comprehensive information about the call progress is available through the Channel Status window. This window indicates the various stages each B-channel goes through whilst establishing a connection.

| Status - BRI | Comments |
|--------------|--|
| Idle | the channel is idle |
| Calling | when calling — the network has acknowledged the call |
| Connected | when connection is established |
| Sync | when the channels are synchronized |
| Active | when all available channels are connected |
| Releasing | waiting for the network to confirm a release of the call |
| Released | when disconnected - the network has acknowledged the disconnection |

Table 2. Channel status.

Cause codes

The most common cause codes (for ISDN) are:

| | |
|-----|---|
| 1 | Unallocated (unassigned) number |
| 2 | No route to specified transit network (WAN) |
| 16 | Normal clearing |
| 17 | User busy |
| 18 | No user responding |
| 21 | Call rejected |
| 28 | Invalid number format (incomplete number) |
| 29 | Facility rejected |
| 31 | Normal, unspecified |
| 34 | No circuit/channel available |
| 41 | Temporary failure |
| 58 | Bearer capability not presently available |
| 65 | Bearer service not implemented |
| 69 | Requested facility not implemented |
| 81 | Invalid call reference value |
| 88 | Incompatible destination |
| 100 | Invalid information element contents |
| 102 | Recovery on timer expiry |
| 127 | Internetworking, unspecified |
| 255 | TANDBERG specific. undefined cause code |

Table 3. Cause codes.

3.16.3 Call Status

Comprehensive information about the call is available through the Call Status window. The menu has two columns, one for transmitted and one for received audio/video/data information. If Dual Stream is available on your system and in use, pressing the UP/DOWN keys will show one page per connected site. Some of the information fields will vary dependent on if H.320 (ISDN calls) or H.323 (IP calls) are made.

3.16.4 System Selftest

The system performs a check to determine internal hardware integrity. System Selftest is useful when you want to check if your network connection is active.

3.16.5 View Administrator Settings

This window displays all the system settings. Use the arrow key on the remote control to scroll through the list. The administrator settings available will vary within the MXP system range depending on system and what software options installed.

View Administrator Settings may contain:

| | |
|------------------------------|--|
| General Settings | System Name Language Dual Monitor Auto answer Max Call Length Access Code Incoming MCU calls Incoming Telephone calls Far End Control Fallback to Telephony |
| Screen Settings | TV Monitor Format Picture Layout VGA Monitor Format VGA Out Quality PC Picture Format Allow VGA 50Hz |
| Software Options | Options Installed Serial Number Current Option Key |
| Menu Settings | Menu Timeout in Call Welcome Menu Welcome Picture Logo Balloon Help Display Welcome Text Welcome Text Administrator Password |
| Presentation Settings | Duo Video Mode Start up Video Source Presentation Source Snapshot Source Auto Display Snapshot PIP Appearance PIP Placing |
| VNC Settings | Address Display Number Call Quality Video Algorithm Audio Algorithm |

| | |
|----------------------------------|--|
| | Interlaced |
| Video Quality | Main Camera PC Document Camera VCR AUX VNC Split Screen |
| Default Call Settings | Call Type Network Bandwidth Restrict (56k) Auto H320 Bandwidth Auto H323 Bandwidth SIP |
| Audio Settings Inputs | Mic1 Mic2 Mic3 Audio4 Audio5 Audio6 Mix Mode VCR Ducking |
| Level Settings | Mic1 Mic2 Mic3 Audio4 Audio5 Audio6 |
| Outputs | Out1 Out2 (AUX) Out3 (VCR) Out1 Mode |
| Level Settings | Out1 Out2 (AUX) Out3 (VCR) |
| Echo Control | Mic1 Mic2 Mic3 Audio4 |
| Audio Levelling (AGC) | Mics Audio5 (AUX) Audio6 (VCR) Received Audio |
| Alert Tones & Volume | Video Call Alert Tone Telephone Alert Tone Alert Volume Alert Speaker Key Tones |
| Video Settings | Camera Tracking Mode MCU Status Line Web Snapshot |

| | |
|---------------------------------------|--|
| | MultiSite Picture Mode |
| Picture Control | Focus White balance Brightness |
| Video Name | Main Cam AUX Doc Cam VCR PC VGA VNC |
| Network Type | ISDN-BR\PRI\Leased E1\T1\External H331 ISDN Switch Type ETSI (Euro ISDN),... Line1 Setup On Number1 Number2 SPID1 SPID2 Line2 Setup On Number1 Number2 SPID1 SPID2 Line3 Setup On Number1 Number2 SPID1 SPID2 |
| Advanced ISDN Settings | Subaddress Validate Numbers (MSN) Parallel Dial Send Own Numbers Sending Complete |
| ISDN-PRI Settings | Number Range ISDN-PRI Switch Type |
| Channel Hunting | Max Channels Low Channel High Channel Search High, Low Line Settings: T1 Cable Length 1 T2 Cable Length 2 E1 CRC-4 |
| Advanced ISDN PRI Settings | NSF Code Video NSF Code Telephone Call |
| Leased E1/T1 Settings | Call Control Network Interface Max Channels Start Channels T1 Line Coding Line Settings |
| External network configuration | Call Control RS66 |

| | |
|--------------------------------|--|
| | RS449/V.35 Compatible |
| IP Settings | IP assignment IP address IP subnet mask Gateway Ethernet Speed |
| H.323 Settings | E.164 Alias Use Gatekeeper Gatekeeper IP H.323 Prefix |
| Advanced H.323 Settings | RSVP NAT NAT Address QoS |
| IP Precedence | Audio Video Data Signaling IP Type of Service (TOS) |
| Diffserv | Audio Video Data Signaling |
| SNMP Settings | SNMP Trap Host1 SNMP Trap Host2 SNMP Trap Host3 SNMP Community |
| Streaming Settings | Address Address Port TTL/Router Hops Streaming Source Allow Remote Start Announcements Video rate (kbps) |
| Network Profiles | Auto H.320 H.323 Network Profile 4 Network Profile 5 Network Profile 6 |
| Security | Encryption Encryption mode |
| Data Port 1 | Baud rate Parity Databits Stopbits Mode |
| Data Port 2 | Baud rate Parity Databits Stopbits Mode |

3.16.6 IP Address Conflict Check

The system will give a warning if there is an IP conflict. The user may initiate this check by selecting IP Address Conflict Check.

3.16.7 Warnings

If any warnings registered by the system it will be displayed in the Warnings menu. Open a warning in the list to get more information about the warning.



Figure 3-16. Warnings.

The following warnings are displayed if detected by the system:

ISDN BRI warnings

- ISDN is enabled on BRI line x, but the line is not connected. Please check your network connection or disable the line. (101)
- There is something wrong with ISDN BRI line x. Please check your network connection. (102)

IP network quality warnings

- The system is experiencing packet loss in the IP network. This may affect the quality of the call.
- The system is experiencing high jitter in the IP network. This may affect the quality of the call.
- The system is dropping IP packets due to latency in the network. This may affect the quality of the call.

ISDN PRI warnings

- ISDN PRI is configured for this system, but the line is not connected. Please check your network connection or disable the network. (131)
- There is something wrong with the ISDN PRI line (Blue alarm). Please check your network connection. (132)
- There is something wrong with the ISDN PRI line (Yellow alarm). Please check your network connection. (133)
- There is something wrong with the ISDN PRI line (D-Channel not active). Please check your network connection. (134)

External Network warnings

- External Network is configured for this system, but the line is not connected. Please check your network connection or disable the network. (161)

Leased E1/T1 warnings

- Leased E1/T1 is configured for this system, but the line is not connected. Please check your network connection or disable the network. (191)

- There is something wrong with the Leased E1/T1 line (Blue alarm). Please check your network connection. (192)
- There is something wrong with the Leased E1/T1 line (Yellow alarm). Please check your network connection. (193)

H323 gatekeeper warnings

- Could not register to the gatekeeper.
- The gatekeeper rejected to register the system. Another system is already registered with the same alias or H.323 ID.
- The max capacity on the gatekeeper is reached. Registration failed.
- Tried to register to the gatekeeper without a valid alias. Registration failed.
- The system is not allowed to register with this gatekeeper.
- Can not find the gatekeeper. Check the gatekeeper configurations on the system.

3.16.8 Text Chat

While in an ISDN or IP call to another system supporting Text Chat (T.140), select Text Chat from the Control Panel. Enter text in the displayed window.

How to use Text Chat:

1. Choose Text Chat from the Control Panel to open the Text Chat window.
2. Enter text with the number keys like on a mobile phone. The text is sent to the far end continuously letter by letter.
3. Press OK to end Text Chat and escape from the text chat window.

Note that Text Chat is supported in point to point calls only.

3.16.9 Administrator Settings

Administrator Settings contains the configuration of the whole system. It is recommended to password protect Administrator Settings to prevent occasional users to make changes to the system. See [Administrator Settings](#) for further details.

3.16.10 Restart

The restart is only available when Kiosk Mode is deactivated.

Restart the system by pressing the Restart button. You are prompted with a dialog box saying: Do you want to restart the system? Press OK to restart, press Cancel (X) to abort.

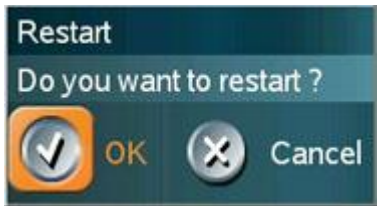


Figure 3-17. Restart

3.16.11 User Guide

The user guide is only available when Kiosk Mode is deactivated.

The on screen user guide takes you through a quick step-by-step introduction to videoconferencing. It gives the user basic skills in how to use the system.



Figure 3-18. User Guide.

4 Administrator Settings

The administrator settings are only available when Kiosk Mode is deactivated.



Figure 4-1. Administrator settings menu.

Administrator Settings contain all the settings of the system. Making changes to Administrator Settings will change the behavior of the system. It is recommended to password protect the access to Administrator Settings to prevent occasional users from making crucial changes to the system, see [Administrator Password](#).

Administrator Settings contain:

- [General](#)
- [Menu Settings](#)
- [Presentation Settings](#)
- [Call Quality](#)
- [Audio](#)
- [Video](#)
- [Security](#)
- [Network](#)
- [Restore Default Settings](#)

4.1 General Settings

The general settings are only available when Kiosk Mode is deactivated.

When installing the system, go through the General Settings menu to ensure that you have the right settings for your system, see System Configuration.



Figure 4-2. General settings menu.

General Settings contain:

- [Language](#)
- [System Name / International Name*](#)
- [Autoanswer](#)
- [Phone Book Settings](#)
- [External Service Settings](#)
- [Permissions](#)
- [Screen Settings](#)
- [Software Options](#)
- [Date and Time Settings](#)

** This field is only visible if the system name contains Asian and non-Latin character text input.*

4.1.1 Language

The system supports 16 different languages for its on-screen menus; English, German, French, Norwegian, Swedish, Italian, Spanish, Portuguese, Russian, Finnish, Chinese Simplified, Chinese Traditional, Japanese, Korean, Thai and Arabic. Select the preferred language and press OK to save.

Note that pressing the Phone Book button 5 times followed by the number button 1 on the remote control will reset the menu language to English.

4.1.2 System Name

System Name identifies the system:

- On the welcome page.
- During an MCU conference call.
- When using the Web-interface.
- When the codec is acting as an SNMP Agent.
- Towards a DHCP server.
- H323 ID. Other systems can call in using this name instead of IP-number/IP-address.

System Name is blank by default. System name can be alphanumeric and up to 50 characters long. Follow the installation procedure to enter a System Name.

Note that if the system name contains Asian and non-Latin character text input, the [International Name](#) using Latin characters only, must be specified as well.

4.1.3 International Name

If the [System Name](#) contains Asian and non-Latin character text input, the International Name using Latin characters only, must be specified as well. This is in order to make other systems understand the system name.

4.1.4 Auto Answer

The auto answer setting decides whether an incoming call is put through automatically or manually.

| | |
|-----------------------|--|
| On | The system will automatically answer all incoming calls. |
| On+Mic Off | The system will automatically answer all incoming calls and switch the microphone off when the call is connected. Press Mic Off to switch the microphone on. |
| Off | You must manually answer all incoming calls by pressing OK or the Call key. |

4.1.5 Phone Book Settings

Corporate Directory

| | |
|------------|---|
| On | The Corporate Directory is available in the menu. |
| Off | The Corporate Directory is hidden from the menu and is unavailable for users. |

IP address

Enter the IP address of the management system that provides the Phone Book.

Path

The Path indicates the function of the management system.

4.1.6 External Services Settings

External Services

| | |
|------------|--|
| On | When set to On External Services are available. |
| Off | When set to Off External Services are unavailable. |

IP address

Enter the IP address of the service provider for External Services.

Path

Enter the Path to the External Services provider.

The services available are defined by the service provider.

4.1.7 Permissions

Permissions contains settings for incoming telephone Calls, Far End Control, Remote Software Upgrade and Fallback to Telephony.

Access Code

An access code will help you control the use of the system. All users must enter a code to identify themselves and the call will be charged on their account. Access Codes are handy for group systems where there are more users or divisions that share the costs of using the system. Access Code can be set to "On" and "Off". Please refer to section [Appendix 5](#) for more information on Access codes.

| | |
|------------|---|
| On | When making a call, an Access Code dialog box will be shown. The user must enter the correct password in order to put the call through. |
| Off | No password is necessary to make a call. |

Incoming Telephone Calls

| | |
|------------|--|
| On | The system will accept incoming telephone calls. |
| Off | The system will not accept incoming telephone calls. This is useful to prevent incoming calls from systems other than videoconferencing systems. |

Far End Camera Control

| | |
|------------|--|
| On | The far end will be able to: <ul style="list-style-type: none"> • Control your camera • Select your video sources • Activate your camera presets • Request snapshots |
| Off | The far end can access none of the four features above on the local system. You will however still be able to control the camera on the far end. |

Fallback to Telephony

When dialing a number and the system fails to place a video call to the number dialed, the system will attempt to place a telephone call if Fallback to Telephony is enabled.

| | |
|------------|---|
| On | Enables fallback from video calls to telephone calls. |
| Off | Disables fallback. |

Far End ISDN System Upgrade

It is possible to upgrade software remotely, i.e. a far end system may upgrade software on a local system via http on ISDN. The system to be upgraded must be configured to allow remote software upgrade. It is possible to set a password which is needed for the far end system to be able to accomplish the software upgrade.

| | |
|------------|--|
| On | The system will allow a remote system to upgrade local software. |
| Off | The system will not allow a remote system to upgrade local software. |

Note that the configuration can also be done via the telnet or the serial port.

Maximum Call Length (minutes)

This feature will automatically end both incoming and outgoing calls when the call time exceeds the specified Max Call Length. Max Call Length can have the following values: 0-999 (minutes), where 0 means off.

4.1.8 Screen Settings

Auto Layout

| | |
|------------|--|
| On | If Auto Layout is On the system will change layouts automatically depending on the number of participants in a call and if you have a dual video stream or not. Please refer to Layout for more information. |
| Off | If Auto Layout is Off there will be no automatic layout changes during a call. All desired layout changes must be done manually. |

Note that when you receive low resolution images (176x144 pixels or less) the screen will automatically adjust to a smaller view to give optimum quality experience.

Picture Layout

The Advanced Picture Layout is related to the Layout button on the remote control and it can be used at any time to change the screen layout. For wide screen systems POP mode is recommended. You will get optimized picture layouts for wide screen by pressing the Layout button on the remote.

| | |
|--------------------------------------|--|
| Picture in Picture (PIP) | Pressing the Layout button on the remote will result in an extra picture in smaller view (Picture in Picture). Press the Layout button to move it around in the corners of the screen and finally hide it. Pressing and holding Layout for 1 second will hide the small picture directly from any position. |
| Picture outside Picture (POP) | <p>Press the Layout button to see the images side-by-side, e.g. 1+1 layout, where the far end and near end are displayed as images of equal size, see figure below.</p> <p>Press the Layout button once more to change to 1+2 layout. The far end image will be displayed as the main video, with the near end, usually the user of the system, as a smaller image in the upper right corner. If Duo Stream is used, the Dual Stream image is displayed as the main image and the far end and near end as smaller images to the right, see figure below for an example.</p> <p>Press the Layout button again to get the 1+3 layout.</p> <p>The next time the Layout button is pressed, the normal full screen view of the far end is displayed. Pressing and holding Layout for 1 second will always bring you back to full screen.</p> |

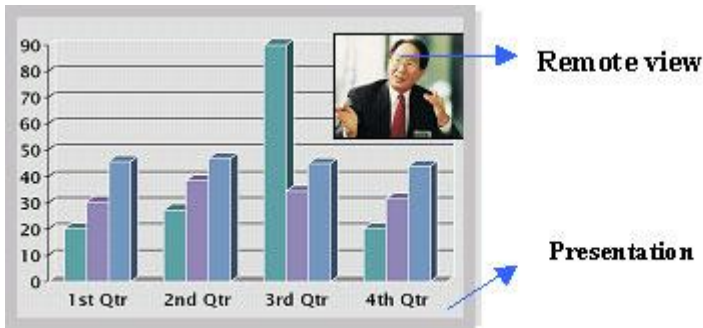


Figure 4-3. Example of Picture in Picture.

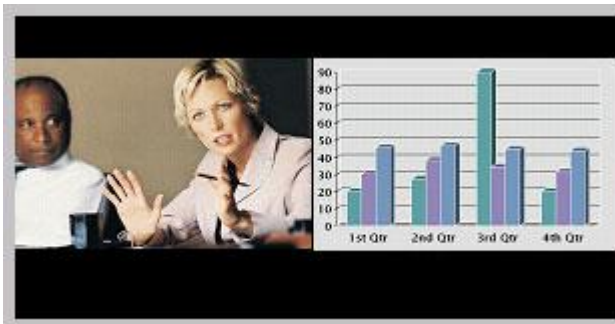


Figure 4-4. Example of 1+1 Side-by-Side view (wide screen).

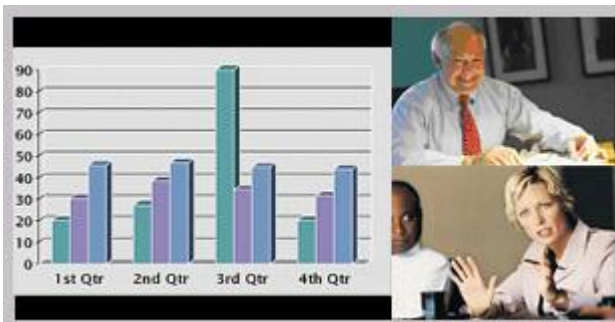


Figure 4-5. Example of 1+2 Picture outside Picture (wide screen).

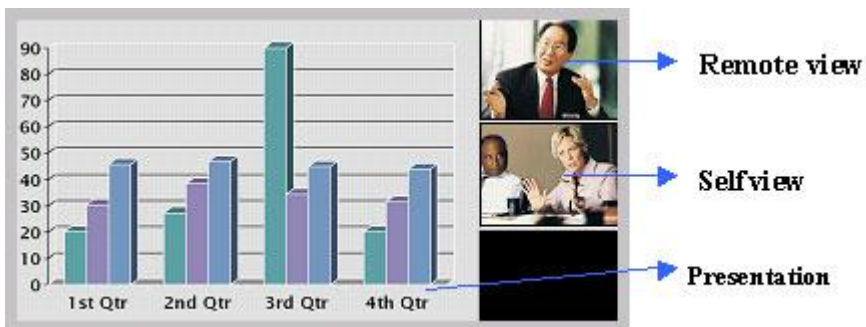


Figure 4-6. Example of 1+3 Picture outside Picture (wide screen).

Note that the following menu settings do not apply for all TANDBERG MXP systems. Please refer to the actual menu page on your system.

VGA Monitor Format

To fully leverage your wide screen display, activate the Native 16:9 format by setting the VGA Monitor Format to Wide. Note that you should only change this setting if your VGA monitor is a wide screen (16:9) monitor or projector. The VGA and DVI output will then be optimized for Wide Screen VGA display.

| | |
|---------------|--|
| Normal | Output format is optimized for Normal VGA monitors (4:3) |
| Wide | Output format is optimized for Wide VGA monitors (16:9) |



Figure 4-7. Wide screen VGA or TV monitor in Normal (stretched) mode.



Figure 4-8. Wide screen VGA or TV monitor in Wide (native) mode.

VGA Out Quality*

The supported range of VGA formats will be optimized for the VGA display monitor based on the source image.

VGA Out Quality enables the user to change the preferred format for the DVI/VGA output. It is recommended to keep this setting in Auto unless your screen doesn't support some of the XGA or SVGA formats the system is using. Note that the VGA Out port support VESA Power Management.

| | |
|--------------------------|---|
| Auto | VGA output format will be optimized dependant of the video source format, refresh and of the EDID information available. Supported formats are: SVGA (800x600) 75Hz XGA (1024x768) 60Hz / 75Hz WXGA (1280x768) 60Hz |
| SVGA 800x600 75Hz | VGA output format is forced to SVGA format (800x600) 75Hz |
| XGA 1024x768 60Hz | VGA output format is forced to XGA format (1024x768) 60Hz |

VGA Out Quality for Wide XGA:

If VGA Monitor Format is set to Wide, PC Picture Format is set to Normal, VGA Out Quality is set to Auto, the layout on the monitor is either fullscreen or POP, and the input source to the largest window is PC with resolution 1024x768, the system will use WideXGA (1280x768) instead of XGA, when the monitor supports this.

PC Picture Format (wide screen monitors only)

PC Picture Format setting only takes effect when TV or VGA Monitor Format is set to Wide. Use this setting to determine if you want your PC presentations to be shown stretched in full screen, or with correct aspect ratio using part of the widescreen display. With the VGA Out Quality set to Auto the presentation will be of the best possible quality supported by the monitor.

| | |
|---------------|---|
| Normal | VGA output will have 4:3 aspect ratio on wide screen monitor. |
| Wide | VGA output will utilize the wide screen monitor at full. |

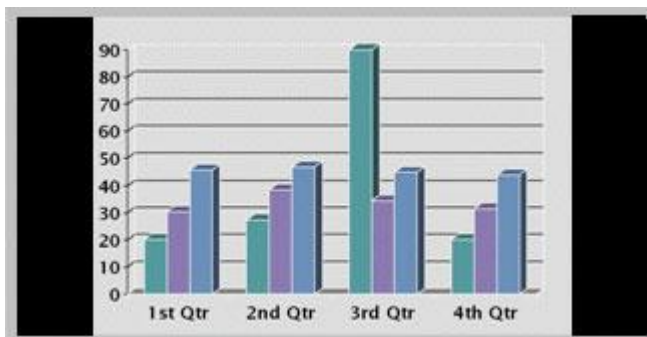


Figure 4-9. PC presentation shown in Normal (correct ratio) mode.

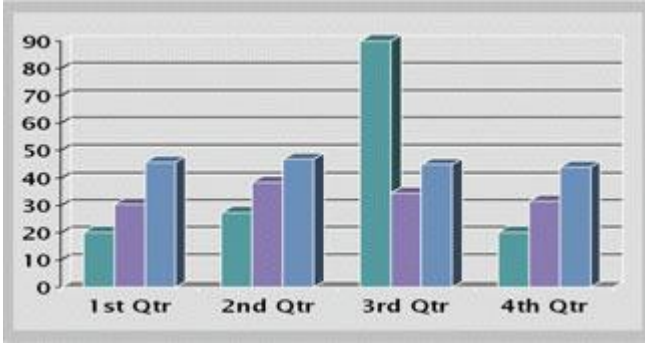


Figure 4-10. PC Presentation shown in Wide (stretched) mode.

4.1.9 Software Options

In order to activate additional bandwidth, you need to enter a bandwidth key. A restart of the system is required after entering a new option and/or bandwidth keys. If the key is invalid, the original key will be used.

The following options are available:

1. No option
2. Bandwidth options

4.1.10 Date and Time Settings

NTP IP

This is the NTP time server address from which the system can get updated time information. See [IP Services](#) for more details.

| | |
|---------------|--|
| Auto | The NTP IP address is set automatically. |
| Manual | The NTP IP address is set manually. |

IP Address

The IP Address for obtaining the date and time information.

Time Zone

Select the correct time zone for the location of your system.

Date Format

Choose between DD/MM/YY, MM/DD/YY, or YY/MM/DD as the desired date format.

Time Format

Select 12h or 24h time format.

Daylight Savings

| | |
|------------|--|
| On | Automatically adjust for daylight savings changes. |
| Off | Do not adjust for daylight saving changes. |

4.1.11 Max Call Length

This feature will automatically end both incoming and outgoing calls when the call time exceeds the specified Max Call Length. Max Call Length can have the following values: 0-999 (minutes), where 0 means off.

4.2 Menu Settings

The menu settings are only available when Kiosk Mode is deactivated.

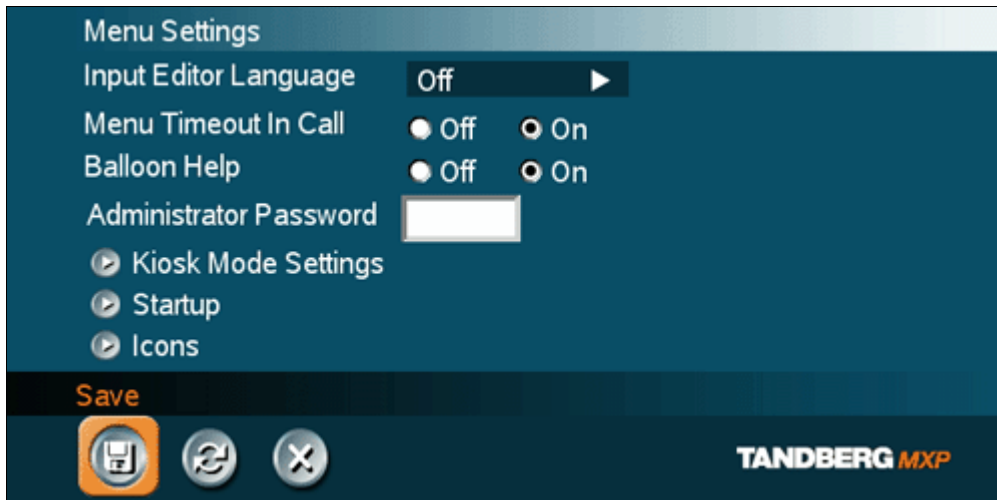


Figure 4-11. Menu settings menu.

Menu Settings contain the settings:

- [Input Editor Language](#)
- [Menu Timeout In Call](#)
- [Balloon Help](#)
- [Administrator Password](#)
- [Kiosk Mode Settings](#)
- [Startup](#)
- [Icons](#)

4.2.1 Input Editor Language

When the Input Editor Language is set to Chinese, Korean or Japanese the user will be able to enter Chinese / Korean / Japanese characters into an input field like the System Name or Phone Book, using the remote control.

4.2.2 Menu Timeout In Call

Main menu appears on the bottom line of the screen. Set Menu Timeout In Call to On if you want the menu to time out automatically when you are in a call.

| | |
|------------|---|
| On | The menu will time out automatically after 15 seconds if there is no activity on the remote control. Menu timeout does only apply when you are in a call. Outside a call, the menu will not time out. |
| Off | The menu will not time out automatically. Press Cancel (X) to hide the main menu manually. |

4.2.3 Balloon Help

It is possible to enable / disable the balloon help window.

| | |
|------------|--|
| On | Choose On if you want help text windows to appear. |
| Off | There will be no help text window. |

4.2.4 Administrator Password

It is recommended to put an Administrator Password on the system. The Administrator Password can be maximum 5 digits long. The Administrator Password dialog box will pop up when you choose Administrator Settings from the Control Panel. This will prevent occasional users from going in to administrator settings. With an administrator password, you can ensure that your system will behave in the same way every time and that only approved people are allowed to make changes to the system.

4.2.5 Kiosk Mode Settings

Kiosk Mode

In Kiosk Mode the system is set to a simplified state where it can be controlled with just the four arrow keys and OK. You will get a simplified on-screen menu with only basic functionality available:

- make calls (using predefined contacts in the phone book)
- receive calls
- end calls
- adjust volume

Note that deactivating the Kiosk Mode is only possible through the web interface, telnet or data port, or by pressing 5 times on the Phone Book symbol then once on the number 3.

Using Kiosk Mode

Outside a call the Welcome Menu will be displayed:



Figure 4-12. Place a Call, Volume and Close.

In a call, the system will display Far End video in full screen. If Max Call Length is set to a value and the system is in a call, the system will display a warning when it is 5 minutes, 1 minute and 10 seconds left of the call. If pressing OK when the system is in a call, the following menu will be displayed: End Call, Volume and Close.

The following Kiosk Mode settings allow you to make some adjustments to the system's behavior in Kiosk Mode.

Kiosk Mode - Language Menu



Figure 4-13. Language selection menu.

If Language Menu is enabled you will first see the language selection menu. Select language and the Welcome Menu will be displayed with your desired language.

| | |
|------------|--|
| On | When On the system will display the language menu as the first menu in kiosk mode. |
| Off | When Off the system will display the welcome menu in English (default). |

Kiosk Mode - Available Languages

In Kiosk Mode the system supports 7 different languages for its simplified on-screen menu; English, German, French, Norwegian, Swedish, Italian and Spanish. Select the preferred language.

Kiosk Mode - Auto Dial*

| | |
|------------|---|
| On | The system will automatically dial to the first contact in the Phone Book when he handset is lifted. If this contact is busy, the system will call the second number in the Phone Book and so on. If the user places the handset in the cradle, the system will switch to Speaker Mode. Only the Far End system can end the call. |
| Off | The system will not make a call automatically when the handset is lifted. |

* Applies only to systems with handset

Kiosk Mode - Allow Use of Remote Control

| | |
|------------|---|
| Yes | All keys on the remote control are enabled. |
| No | All keys except the arrow keys and OK key are disabled. |

Kiosk Mode - Phone Book

| | |
|------------------|--|
| Local | The system will use the Local Phone Book in Kiosk Mode. |
| Corporate | The system will use the Corporate Directory in Kiosk Mode. |

Kiosk Mode - Kiosk Menu

| | |
|------------|---|
| On | The Kiosk Mode menus will appear on the screen. |
| Off | No menus or indicators will appear on the screen. |

4.2.6 Startup

Welcome Menu

The Welcome Menu contains the Main Menu, System Status, your System Name and dial in numbers.

| | |
|------------|---|
| On | The Welcome Menu is shown when the system wakes up from standby mode. |
| Off | The Welcome Menu is not shown when the system wakes up from standby mode. Press the OK button to open the welcome menu. |

Welcome Picture

The Welcome Picture is what you see in the background of the welcome menu.

| | |
|-----------------|--|
| Selfview | Selfview is shown in the background of the welcome menu. In most cases this means that main camera is displayed and you can see the video image of yourself. |
| Off | No picture is shown in the background of the welcome menu. |

Logo

It is possible to upload a company logo to the system. For more information about how to upload a Logo, see [Appendix 6](#). Set the Logo settings to On to display the logo.

| | |
|------------|---|
| On | Choose On if you want the company logo to appear in the background of the welcome menu. |
| Off | The logo is not displayed. |

Note: The TANDBERG Logo will be displayed if no other company logo is loaded and logo is enabled.

Display Welcome Text

The welcome text displays your system name and dial in numbers by default. It is possible to hide this information by choosing Display Welcome Text Off.

| | |
|------------|--|
| On | Welcome text is displayed on the welcome menu. |
| Off | Welcome text is not displayed on the welcome menu. |

Welcome Text

You can change the welcome text to any text you like, instead of the default text. Remember that Display Welcome Text must be On to be able to edit the welcome text.

4.2.7 Icons

The following indicator icons may be set to on or off:

- Mic Off
- Volume Off
- On Air
- Encryption
- Bad Network
- Telephone

See [On-screen Indicators](#) for details.

4.3 Presentation Settings

The presentation settings are only available when Kiosk Mode is deactivated.



Figure 4-14. Presentation settings menu.

Presentation Settings contain:

- [Presentation Start](#)
- [H.239](#)
- [Startup Video Source](#)
- [Presentation Source](#)
- [Snapshot Source](#)
- [Auto-Display Snapshot](#)
- [PIP Appearance](#)
- [PIP Placing](#)
- [VNC Settings](#)

4.3.1 Presentation Start

If your system has Dual Stream capabilities, you can show two video streams at the same time (see also [Dual Stream](#)). Presentation Start is Auto by default. This means that you will start Dual Stream (a second video stream) automatically when starting a presentation. Dual Stream requires the Presenter Option and H.263 video. To check which options are installed, see the System Information menu in Control Panel.

Manual means that you manually choose if you want to start Duo Video or not every time you start a presentation.

| | |
|---------------|--|
| Auto | Dual Stream starts automatically when you start a presentation (in other words, when you choose a second video source). If your system or the far end system is not capable of Duo Video/H.239, you will not use Dual Stream, but rather send the presentation source as your Main Video |
| Manual | When starting a presentation, select Presentation in the call menu and select Start Presentation. Choose a video source from the list displayed on the screen. |

4.3.2 H.239

H.239 supports transmission of two video streams. It combines elements of Duo Video and People+Content. If H.239 is disabled you will still be able to start TANDBERG Dual Video Stream*

| | |
|-----------------|----------------|
| Enabled | Enables H.239 |
| Disabled | Disables H.239 |

* The TANDBERG 550 MXP can only receive Dual Video Stream.

4.3.3 Startup Video Source

The Startup Video Source is the video source on display when the system wakes up from standby mode. If you use Main Camera as start up source, the system will start with Main Camera every time the system wakes up from standby, regardless of what the previous user was using.

You can change Startup Video Source to Main Camera, PC, Document Camera, VCR, AUX, VNC or Current depending on what video sources you have available for your system. Choosing Current will result in the last used video source before the system went to standby.

4.3.4 Presentation Source

The Presentation Source is connected to the Presentation button on the remote. Pressing the Presentation button will put the Presentation Source on display. Presentation Source is PC by default*. You can change the Presentation Source to any video source and none. Choosing none results in opening the Presentation menu when pressing the Presentation key.

* Only for systems with the PC video input available.

4.3.5 Snapshot Source

When you take a Snapshot, you get a snapshot of the Snapshot Source. Current is the default Snapshot Source. This means that you take a snapshot of the video source that is currently active.

You can change the Snapshot Source to any video source. In this way you can program the snapshot key to apply only for PC for instance. Press Snapshot and you will take a PC snapshot regardless of what video source that is currently active.

4.3.6 Auto-Display Snapshot

Select Auto to automatically display a received snapshot. Turn Auto-Display Snapshot Manual if you wish not to have them displayed on the screen when they are sent or received. The snapshots will be sent and received, but not displayed. With Auto-Display Snapshot set for Manual, you must enter the Presentation menu to display a snapshot.

| | |
|---------------|---|
| Auto | A sent or received snapshot will automatically be displayed on the screen. |
| Manual | A sent or received snapshot will not be displayed on the screen. To see the snapshot, choose Display Snapshot in the Presentation menu. |

4.3.7 PIP Appearance

A Picture in Picture (PIP) is a smaller picture placed in one of the corners of the screen. The PIP enables you to see an extra picture in your video conference.

| | |
|-------------|--|
| Auto | PIP Auto means that Picture In Picture will appear automatically when it is suitable. A picture in picture is nice when you use Duo Video and you need an extra window to see all the pictures. You can of course show or hide the PIP with the Layout button on the remote anytime. |
| On | PIP On means that a Picture in Picture will always be displayed. |
| Off | PIP Off means that PIP is not displayed automatically. |

4.3.8 PIP Placing

PIP Placing lets you decide where the PIP shall appear. You can of course move the PIP with the Layout button on the remote anytime.

| | |
|---------------------|---|
| Top Right | PIP is placed in the Top Right corner. |
| Bottom Right | PIP is placed in the Bottom Right corner. |
| Bottom Left | PIP is placed in the Bottom Left corner. |
| Top Left | PIP is placed in the Top Left corner. |

4.3.9 VNC Settings

VNC Settings is necessary when using a VNC presentation. See chapter PC Soft Presenter and VNC for more information on how to use VNC.

| | |
|-----------------------|---|
| Address | The IP-address of the PC with the VNC software installed. To find the IP-address of the PC, place the mouse pointer on the VNC program icon in the lower right corner of the Windows taskbar. You can also select Command Prompt from the Startup-menu\Run and type cmd then enter. This will open a command window and from here. Type "ipconfig" and press enter. |
| Display Number | The display number for VNC is 0 and upwards. If you are using WinVNC, double-click on the icon on the taskbar to view WinVNC properties. This number should correspond with Display Number in this menu. |
| Password | Enter the same password as specified in WinVNC properties. The password will be shown as asterisk signs (*) the next time you enter the menu. |

4.4 Call Quality

The call quality setting is only available when Kiosk Mode is deactivated.



Figure 4-15. Call quality menu.

Call Quality contains the settings:

- [Video Algorithm](#)
- [Audio Algorithm](#)
- [Natural Video](#)
- [Max Upstream Rate](#)
- [Video Quality](#)
- [Default Call Settings](#)

4.4.1 Video Algorithm

The system will automatically select the best video algorithm based on the video source and the capabilities of the remote system. Use this menu to disable video algorithms in case you have interoperability issues calling other systems.

| | |
|--------------|---|
| H.264 | Bandwidth efficient video compression and decompression. |
| H.263 | Normal video compression and decompression. |
| H.261 | Legacy video compression and decompression. The system will always have H.261 enabled. Therefore it is impossible to uncheck H.261. |

4.4.2 Audio Algorithm

The system will automatically select the best audio algorithm based on the call rate and the capabilities of the remote system. Use this menu to disable audio algorithms in case you want to remove “low quality” audio, or if you have interoperability issues calling other systems.

| | |
|----------------|---|
| G.722 | High quality audio (7 kHz at 48kbps, 56kbps or 64kbps) |
| G.728 | Compressed normal quality audio (telephone quality, 3.1 kHz at 16kbps) |
| G.711 | Normal quality audio (telephone quality 3.1kHz at 64kbps). This audio algorithm is mandatory for video conferencing equipment and is impossible to uncheck. |
| G.722.1 | Compressed high quality audio (7 kHz at 24kbps, 32kbps and 48kbps). |
| AAC-LD | CD-quality audio, MPEG-4 Advanced Audio Coding Low Delay (20 kHz, mono at 64kbps). |

Call Rate vs Audio algorithms selected

Modify/remove algorithms used by unchecking the different audio algorithms.

Automatically preferred audio algorithms on call rates up to and including 192kbps

1. G.722.1 (24kbps or 32kbps)
2. G.728 (16kbps)
3. AAC-LD (64kbps or 56kbps)
4. G.722 (56kbps, 64kbps or 48kbps)*
5. G.711 (64kbps, 56kbps or 48kbps)**
6. AAC-LD (48kbps or 128kbps)

Automatically preferred audio algorithms on call rates above 192kbps

1. AAC-LD (128kbps)***
2. AAC-LD (64kbps or 56kbps)
3. G.722 (64kbps, 56kbps or 48kbps)*
4. G.722.1 (32kbps or 24kbps)
5. G.728 (16kbps)
6. G.711 (64kbps, 56kbps, 48kbps)**
7. AAC-LD (48kbps or 128kbps)

* G.722 at 64kbps is used in H.323 (IP) calls only.

** G.711 at 64kbps is used in SIP and H.323 (IP) calls only.

*** Dependent on a call rate above the AAC-LD 128 threshold. Note that this is not available on all TANDBERG systems.

4.4.3 Natural Video

Choosing Natural Video will enable 60 fields* per second true interlaced picture for high motion video. The use of Natural Video requires the H.263+ and H.263++ video protocols. Natural video will be disabled in H.323 MultiSite calls and in H.320 Continuous Presence MultiSite calls.

| | |
|---------------|--|
| Auto | Natural Video Auto will enable transmission of Natural Video from 768 kbps and above. Reception of Natural Video is in this case always enabled. |
| Off | Natural Video Off will disable both transmission and reception of Natural Video. |
| Custom | 384 kbps and above to 1920 kbps and above. |

** 50 fields per second on PAL systems.*

4.4.4 Max Upstream Rate (kbps)

The Max Upstream Rate (kbps) defines the desired maximum transmitted call rate. This is to be able to limit the outgoing bandwidth whilst keeping the maximum incoming bandwidth, especially useful for home offices with different upstream and downstream rates, typically ADSL.

4.4.5 Video Quality

The different video sources need different Video Quality Settings. Main Camera, VCR, AUX and Split Screen have Motion as default. PC, Document Camera and VNC have Sharpness as default.

| | |
|------------------|--|
| Motion | Optimized for smooth motion video (CIF/SIF for low bandwidths, iCIF/iSIF for high bandwidths). |
| Sharpness | Optimized for sharp video (4CIF/4SIF, SVGA, XGA). |
| Auto | The system chooses the best of Motion or Sharpness depending on picture layout and bandwidth. |

4.4.5.1 Intelligent Video Management (IVM)

It is possible to configure the picture sent from the system depending upon specific requirements and applications adding an additional level of flexibility and adaptability.

Generally, the IVM will always try to transmit the format closest to the video input format. Each video input can be configured to either motion or sharpness:

Motion*:

When there is a need for higher frame rates, typically when a large number of participants are present or when there is a lot of motion in the picture.

At low bit rate:

- CIF will be used from a PAL video input
- SIF from NTSC
- w288p from wide format (HD720p) input
- VGA/SVGA/XGA from PC, Digital Clarity

At high bit rate:

- 448p will be used from a PAL video input if Natural Video is 'Off' or 'Auto' or if Natural Video is 'x kbps' and the bit rate is lower than x kbps
- 400p from NTSC if Natural Video is 'Off' or 'Auto' or if Natural Video is 'x kbps' and the bit rate is lower than x kbps
- iCIF will be used from a PAL video input, if Natural Video is 'x kbps' and the bit rate is higher than or equal to x kbps
- iSIF from NTSC, if Natural Video is 'x kbps' and the bit rate is higher than or equal to x kbps
- w448p will be used from a wide format (HD720p) input
- VGA/SVGA/XGA from PC, Digital Clarity

Sharpness*:

Improved quality of detailed images and graphics, lower frame rate, ideal for enhancing quality at lower bandwidths.

- 4CIF will be used from a PAL video input, Digital Clarity
- 4SIF from NTSC, Digital Clarity
- w720p will be used from a wide format (HD720p) input
- VGA/SVGA/XGA from PC, Digital Clarity

IVM Resolution

The following table shows relationship between Transmission modes selected by the system when Motion or Sharpness is set in the Call Quality menu. IVM will use this table to optimize the Video quality, according to the capabilities of the remote system(s):

| Basic Video Quality | Video Input | Transmission mode selection rules* |
|---------------------|-------------|--|
| MOTION | PAL | 448p -> iCIF@50 -> CIF -> QCIF |
| MOTION | NTSC | 400p -> 448p -> iSIF@60 -> iCIF@60 -> SIF -> CIF -> QCIF |
| MOTION | VGA | CIF -> QCIF |
| MOTION | SVGA | CIF -> QCIF |
| MOTION | XGA | CIF -> QCIF |
| MOTION | Wide | w448p -> w288p -> CIF -> QCIF |
| SHARPNESS | PAL | 4CIF -> VGA -> CIF -> QCIF |
| SHARPNESS | NTSC | 4SIF -> 4CIF -> VGA -> SIF -> CIF -> QCIF |
| SHARPNESS | VGA | VGA -> 4CIF -> CIF -> QCIF |
| SHARPNESS | SVGA | SVGA -> XGA -> 4CIF -> VGA -> CIF -> QCIF |
| SHARPNESS | XGA | XGA -> SVGA -> 4CIF -> VGA -> CIF -> QCIF |
| SHARPNESS | Wide | w720p -> w576p -> w448p -> w288p -> CIF -> QCIF |

Table 4. Transmission mode with Motion or Sharpness selections.

4.4.5.2 Native Resolutions

The following live video resolutions are supported on the system*:

Native NTSC:

- 4SIF (704 x 480 pixels), *Digital Clarity*
- 400p (528 x 400)
- iSIF (352 x 480 pixels), *Natural Video*
- SIF (352 x 240 pixels)

TANDBERG COMPASS MXP / UTILITY MXP

Native PAL:

- 4CIF (704 x 576 pixels), *Digital Clarity*
- 448p (576 x 448)
- iCIF (352 x 576 pixels), *Natural Video*
- CIF (352 x 288 pixels)
- QCIF (176 x 144 pixels)
- SQCIF (128 x 96 pixels)

Native PC Resolutions:

- XGA (1024 x 768 pixels), *Digital Clarity*
- SVGA (800 x 600 pixels), *Digital Clarity*
- VGA (640 x 480 pixels), *Digital Clarity*

Wide (16:9) Resolutions:

- w288p (512 x 288 pixels)
- w448p (768 x 448 pixels)
- w576p (1024 x 576 pixels)
- w720p (1280 x 720 pixels)

* Note that the TANDBERG 550 MXP, the TANDBERG 1000 MXP and the TANDBERG Compass/Utility MXP do not transmit the following video formats: 448p, 400p, iCIF, iSIF, w288p, w448p, w576p, and w720p.

4.4.6 Default Call Settings

The system will use the Default Call Settings when making a call.

In addition to the Call Type, Net, Bandwidth and Restrict (56k), you also find settings for H.320 Auto bandwidth and H.323 Auto bandwidth in Default Call Settings.

| | |
|------------------|--|
| Call Type | <p>Call Type can be set to:</p> <ul style="list-style-type: none"> ▪ Video Call ▪ Telephone Call <p>If either the Call Type is set to Telephone Call or the Place Telephone Call icon is selected when making a call, the call will be set up as a telephone call. In all other cases the call will be set up as a video call.</p> <p>Some network configurations may cause the setup of a video call to fail. The call will then be set up as a telephone call instead if Fallback to Telephony is enabled.</p> |
| Network | <p>The Network alternatives are:</p> <ul style="list-style-type: none"> ▪ Auto ▪ ISDN ▪ H.323 ▪ SIP <p>If Auto is selected, the system will select the right network depending on the entered number:</p> <ul style="list-style-type: none"> ▪ If an IP-address (e.g. 10.12.34.56) is entered, H.323 is selected. ▪ If the first digits in the number match those set in H.323 Prefix, H.323 is selected. ▪ In other cases, ISDN (H.320) is selected. <p>ISDN indicates:</p> <ul style="list-style-type: none"> ▪ ISDN-BRI <p>If a gatekeeper is present, it is possible to place IP-calls using “telephone-style” numbers, e.g. an E.164 alias, according to the numbering plan implemented in the gatekeeper. The gatekeeper will then translate the dialed number into an IP-address, see H.323 Settings for more information about gatekeepers.</p> <p>Select ISDN to ensure that the call is set up as an ISDN call.</p> <p>Select H.323 to ensure that the call is set up as an H.323 call.</p> |

| | |
|-----------------------|--|
| | Select SIP to ensure that the call is set up as an SIP call. |
| Bandwidth | <p>Bandwidth decides the quality of the video picture.</p> <p>When set to Auto the system will establish a connection using a proper bandwidth for the call, typically 384kbps for ISDN calls and 768kbps for IP calls.</p> <p>When set to Max the system will set up the call with maximum bandwidth depending on the selected network.</p> <p>Overview*</p> <p>Auto: 384 kbps on ISDN/768 kbps on LAN Max: 384 kbps on ISDN-BRI 768kbps (IP only)</p> <p>768 kbps = 12B, IP only 512 kbps = 8B, IP only 384 kbps = 6B 320 kbps = 5B 256 kbps = 4B 192 kbps = 3B 128 kbps = 2B, Bonding/H.221 64 kbps = 1B, H.221</p> <p>* Note that some software versions and networks do not support all channel selections.</p> |
| Restrict (56k) | <p>A restricted call uses 56kbps channels rather than the default unrestricted 64kbps channels.</p> <p>Some older networks (primarily in the USA) do not support 64kbps channels and require the use of restricted 56kbps calls. By default the system will dial an unrestricted call and downspeed to 56kbps if necessary.</p> <p>To force a restricted call, choose Restrict (56k) On.</p> |

H.221 or 2x64 (2x56) Calling

Some older or low end video systems do not have the ability to make bonded ISDN calls. In these cases it is necessary to dial both ISDN numbers separately to call those systems.

These types of calls are often referred to as

- H.221 calls
- 2x64 calls
- 2x56 calls

- as making 2 x 64 kbps or 2 x 56 kbps calls to the same system.

Place this type of call by:

- Set Network to ISDN
- Set Bandwidth to 128 kbps
- A field for the 2nd number pops up in Call Settings.
- Enter the second number in the Call Settings field. For 128 kbps calls that use bonding, ignore the second number field and just enter one number to be dialed.

Using sub-address / extension address / MCU password

Sub-address is used to address different systems on the same ISDN line and is primarily used in European Countries. LAN equivalent extension address or TCS-4 is used to address different systems on a LAN, when dialing via a gateway.

To specify an ISDN sub-address or its LAN equivalent extension address (TCS-4), add a star (*) after the number and then enter the sub-address/extension address.

Example:

12345678*10 (<number>*<Sub-address/extension address/MCU password>)

When dialing IP via a gateway, the number behind the star (*) on IP might be interpreted as an extension address.

When calling to external MCU's requiring a password (TSC-1), this password can be added after the star (*). If no password is specified, the user will be asked to enter the password (after connecting to the MCU).

4.5 Audio

The audio setting is only available when Kiosk Mode is deactivated.



Figure 4-16. Audio settings menu.

Audio contains the settings:

- [Headset Level Settings](#)
- [Alert Tones and Volume](#)

4.5.1 Headset Level Settings

Headset mic

It is possible to adjust the headset microphone input level according to the sensitivity of the used headset. The on-screen audio level indicator will make it easier to set the correct input level settings. The input level should be adjusted so that the average level reaches within the yellow area, preferably in the middle. The headset microphone input level are adjustable in steps of 1.5 dB from 0 dB to 22.5 dB.

Headset out

It is possible to adjust the audio output level to the headset loudspeakers.

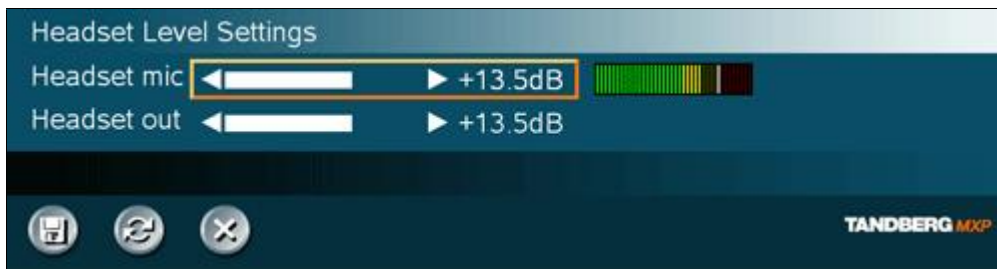


Figure 4-17. Headset level settings menu.

Note that the system has separate volume settings for loudspeaker and headset output. The volume keys on the remote control also adjust the level of the headset output when the headset is activated by pressing the push-button, without changing the volume setting you have for the loudspeaker. When changing back to the loudspeaker, you will get the volume settings you had before you activated the headset.

4.5.2 Alert Tones and Volume

Video Call Alert Tone and Telephone Alert Tone

To help distinguish between incoming video calls and ordinary telephone calls, it is recommended to use different ringing tones for video calls and telephone calls.

Alert Volume

You may change the volume level for the selected ringing tone.

Key Tones

| | |
|------------|---|
| On | There will be a sound indicator when pressing keys on the remote control. |
| Off | There will be no sound when pressing keys on the remote control. |

4.6 Video

The video setting is only available when Kiosk Mode is deactivated.



Figure 4-18. Video settings menu.

Video contains the settings:

- [MCU Status Line](#)
- [Web Snapshots](#)
- [Video Name](#)

4.6.1 MCU Status Line

| | |
|-------------|--|
| On | The MCU / DuoVideo indicator will be displayed and provide information about the conference. |
| Off | The MCU / DuoVideo indicator will not be displayed. |
| Auto | The MCU / DuoVideo indicator will be displayed for a few seconds and then timed out. When grabbing the remote control, the indicators will be shown again. |

4.6.2 Web Snapshots

The system is able to generate JPEG snapshots and provide them to the world outside by request (as 'http get' or via ftp). See [Appendix 6](#) for descriptions of the possible snapshot files.

| | |
|------------|-----------------------------------|
| On | Snapshots generation is enabled. |
| Off | Snapshots generation is disabled. |

Note that web snapshots are not generated if the conference is encrypted.

4.6.3 Video Name

As a default, the video inputs are given the names Main Cam, PC, Doc Cam, VCR, AUX or VNC, dependent on what video sources are available on your system. The video names cannot exceed eight characters. The names correspond to the video names in the Presentation Menu (Choose Presentation from the main menu and open the Main Video or Presentation Video pop up menu). If video names are changed, you will see the changed name appear in the Main Video and Presentation Video menus.

4.7 Security

The security setting is only available when Kiosk Mode is deactivated.



Figure 4-19. Security menu.

Security contains the settings:

- [Encryption](#)
- [Encryption Mode](#)
- [Passwords](#)

4.7.1 Encryption

(Country specific)

| | |
|-------------|--|
| Auto | <p>The system will try to set up calls using encryption.</p> <p>Point to point calls: If the far end system supports encryption (AES or DES), the call will be encrypted. If not, the call will proceed without encryption.</p> <p>MultiSite calls*: In order to have encrypted MultiSite calls, all sites must support encryption. The padlock symbol will indicate encryption mode (AES or DES). If there is a mix of AES and DES encryption, only the symbol for DES encryption (single padlock) will be displayed. The 'closed padlock' will only be displayed on each site when all links in the MultiSite conference are encrypted.</p> <p>If the far end supports encryption, the systems will initiate encryption after the call is connected (an 'open padlock' symbol will be displayed). When encryption has been established, a 'closed padlock' symbol will be displayed.</p> |
| On | <p>The system will only send and receive encrypted data. The call will not be established if not all participants support encryption.</p> |
| Off | <p>The system will not send or receive encrypted data.</p> |

Technical encryption information like encryption algorithm and encryption check code can be found in the Call Status menu.

* Only available on systems with MultiSite option supported and installed.

4.7.2 Encryption Mode

| | |
|-------------|--|
| Auto | The system will try to use the most secure encryption - AES, dependent on the capabilities of the other sites. For sites that do not support AES encryption, DES encryption will be tried. |
| AES | The system will try to use AES with 128 bits encryption when setting up calls. If AES is not supported by the other site(s), no other type of encryption will be initiated. |
| DES | The system will always try to set up the call using DES with 56 bits encryption on ISDN and IP. If all other sites do not support DES, no other type of encryption will be initiated. |

Both AES and DES Encryption are supported for mixed ISDN/IP calls. In addition AES -and DES Encrypted sites can be connected at the same time.

4.7.3 Passwords

Administrator Password, IP Access Password, Streaming Password, VNC Password, Access Code and Remote Software Upgrade password are duplicated from their respective menus. Using the Security menu gives you a quick way to change all passwords of the system.

4.8 Network

The network setting is only available when Kiosk Mode is deactivated.

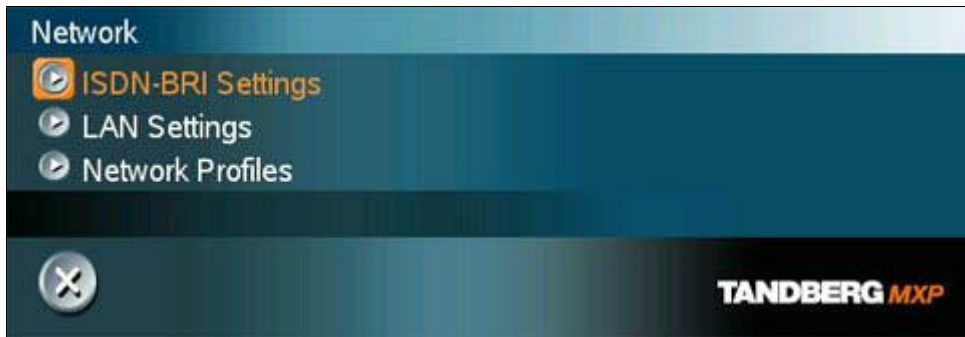


Figure 4-20. Network settings menu.

The network menu contain:

- [ISDN-BRI Settings](#)
- [LAN Settings](#)
- [Network Profiles](#)

4.8.1 ISDN-BRI Settings

To make sure your system will work properly using ISDN-BRI, make the following settings:

1. Set ISDN switch type
2. Enter ISDN line numbers (+ SPIDs if required)
3. Disable unused lines

Some software versions do not support 6 ISDN lines, therefore some of the Line Setup entries may be grayed out.

ISDN switch type

Select the type of ISDN network connected to your unit. Note that 1TR6 should only be used if you are operating the system behind a PABX.

Line setup

This menu allows you to program the numbers associated with your ISDN line. If you want to use this ISDN line, you need to set Enabled On and enter the numbers of your ISDN line. If some of the ISDN lines are not to be used, set Enabled Off. Line 1 should always be enabled. National ISDN and AT&T Custom ISDN might require SPID numbers associated with your ISDN numbers. If you have received two different SPID (Service Profile IDentifier) numbers for each ISDN line from your network provider, you must program both.

| <i>Example*:</i> | | |
|--------------------|----------------------|------------------------------|
| | Numbers | SPIDS |
| ISDN BRI 1: | 67838498 67838498 | 016783849800 016783849810 |
| ISDN BRI 2: | 23478060 23478070 | 012347806000 012347807000 |
| ISDN BRI 3: | 23478420 23478430 | 012347842000 012347843000 |
| ISDN BRI 4: | 23478520 23478530 | 012347852000 012347853000 |

Table 5. Example of Line setup with numbers and SPIDs.

* Note that some systems has less than 4 BRIs available.

Advanced ISDN Settings

Sub address

Using a sub address enables you to connect up to eight ISDN terminals to the same ISDN telephone number and line. The terminals are addressed by using different sub addresses. To call a terminal with a sub address, separate the ISDN telephone number and the sub address with a '*'. Note that this service has limited access on some ISDN networks.

Example: 12345678*2 (up to four digit sub addresses are possible).

Validate Numbers / MSN (Multiple Subscriber Number)

The use of MSN (Multiple Subscriber Number) enables you to attach different ISDN terminals, with different numbers, to the same physical ISDN telephone line. If Validate Numbers is set to On only calls to those numbers specified in the Line Setup menus will be answered. This service can be ordered from your telephone company.

Parallel dial

| | |
|------------|---|
| On | Channels will be dialed and connected in parallel when setting up a BONDING call. |
| Off | Channels will be dialed one by one, which may increase the dialing time. |

Send Own Numbers

| | |
|------------|---|
| On | The system will send its own numbers to the far end. |
| Off | The system will not send its own numbers to the far end, but please note that the network may still send your numbers to the far end. |

Sending Complete

| | |
|------------|---|
| On | The system will send the ISDN message information element Sending Complete. |
| Off | The system will not send Sending Complete. |

4.8.2 LAN Settings

LAN Settings contain:

- [IP Settings](#)
- [H.323 Settings](#)
- [SIP Settings](#)
- [Wireless LAN Settings](#)
- [SNMP Settings](#)
- [IP Services](#)
- [Quality of Service](#)
- [IEEE 802.1x](#)

4.8.2.1 IP Settings

Remember to restart the system after making changes to IP Settings. This can be done by selecting the “Save and Restart” at the bottom of the IP setting menu. Changes in IP Settings menu will not have any effect until the system is restarted.

IP Protocol

| | |
|-------------|--|
| IPv4 | IP version 4 supported. |
| IPv6 | IP version 6 supported. IP Address, IP Subnet Mask and Gateway will be disabled. |
| Both | Both IP version 4 and IP version 6 supported. |

IP-assignment

DHCP (Dynamic Host Configuration Protocol) can be selected when a DHCP server is present.

Note that for IPv6, DHCP is used for NTP / DNS Server Addresses.

| | |
|---------------|---|
| DHCP | IP-address, IP-subnet mask and Gateway are not used because the DHCP server assigns these parameters. |
| Static | The system's IP-address, IP-subnet mask and Gateway must be specified in the IP-address field. |

IP-address

IP-address defines the network address of the codec. This address is only used in static mode. In DHCP-mode, the assigned IP-address can be found on the Welcome Menu.

IP-subnet mask

IP-subnet mask defines the type of network. This address is only used in static mode. Your LAN-administrator will provide the correct value for this field.

Gateway

When using DHCP, the default gateway will be set automatically. If the LAN utilizes static IP addresses, IP address, subnet mask, and default gateway must be specified by the LAN administrator.

Ethernet Speed

| | |
|-----------------|---|
| Auto | The codec will auto-detect the speed/duplex on the LAN. |
| 10/Half | The codec will connect to the LAN using 10Mbps speed/Half Duplex. |
| 10/Full | 10 Mbps speed/Full Duplex. |
| 100/Half | 100 Mbps speed/Half Duplex. |
| 100/Full | 100 Mbps speed/Full Duplex. |

IP Access Password

By setting an IP Access Password on the system, all access to the system using IP (Telnet, FTP and WEB) requires a password. The default IP Access Password is "TANDBERG".

DNS Settings

DNS Server 1-5

DNS Server defines the network addresses for DNS servers. Up to 5 addresses may be specified. If the network addresses are unknown, please contact your administrator or Internet Service Provider.

DNS Domain Name

DNS Domain Name is the default domain name suffix which is added to unqualified names.

Example:

DNS Domain Name is “example.com”, and the name to lookup is “videosystem” will result in a “videosystem.example.com” DNS lookup.

4.8.2.2 H.323 Settings

E.164 alias

This is the E.164 address of the system. The E.164 address is equivalent to a telephone number, sometimes combined with access codes. Valid characters are 0-9,* and #. When using a gatekeeper, the system will send a message to the gatekeeper containing both the E.164 address and the H.323 ID of the system.

H.323 ID

The H.323 ID of the system may be specified here. The System name is used if no H.323 ID is entered.

H.323 Call Setup

| | |
|--------------------|---|
| Direct | An IP-address must be used in order to make a H.323 call. The system will not use a gatekeeper or CallManager |
| Gatekeeper | The system will use a gatekeeper to make a H.323 call. |
| CallManager | The system will use a CallManager to make a H.323 call. |

H.323 Prefix

When dialing a number prefixed with digits specified by H.323 Prefix, and with Net: Auto, an H.323 call will be placed.

Example:

H.323 Prefix is "555". Dialing "55582" with "Net:Auto" will select LAN.

Gatekeeper Settings

Gatekeeper Discovery

| | |
|---------------|--|
| Auto | The system will automatically try to register on any available gatekeeper. If a gatekeeper responds to the request sent from the codec within 30 seconds this specific gatekeeper will be used. This requires auto discovery on the gatekeeper as well. If no gatekeeper responds, the system will not use a gatekeeper for making H.323 calls and hence an IP-address must be specified manually. |
| Manual | The system will use a specific gatekeeper identified by Gatekeeper IP-address. |

Gatekeeper IP Address

This is the gatekeeper IP-address that is used if you specify H.323 Call Setup: Gatekeeper and Gatekeeper Discovery: Manual.

Note that if your system is part of a TANDBERG Expressway™ firewall traversal solution and is placed outside the firewall, you should register the IP address of your Border Controller as the Gatekeeper IP address and set H.323 Call Setup to Gatekeeper.

Authentication Mode

| | |
|-------------|---|
| Auto | If Authentication Mode is set to Auto and the gatekeeper indicates that it requires authentication, the endpoint will automatically try to authenticate itself to the Gatekeeper. |
| Off | If Authentication Mode is set to Off the system will not try to authenticate itself to a Gatekeeper, but will still try a normal registration. |

Authentication ID / Authentication Password

The system sends the Authentication ID and Password to a Gatekeeper for authentication. The authentication is a one way authentication from the endpoint system to a Gatekeeper, i.e. the endpoint is authenticated to the Gatekeeper. If the Gatekeeper indicates that no authentication is required, the endpoint will still try to register.

CallManager Settings

CallManager IP

This is the CallManager IP-address that is used if you specify H.323 Call Setup: CallManager.

Advanced H.323 Settings

The Advanced H.323 Settings only have an effect if they are supported by your IP infrastructure.

NAT

NAT, Network Address Translation, is used when a PC and a videoconferencing system are connected to a router with NAT support. NAT support in the videoconferencing system enables proper exchange of audio/video data when connected to an external videoconferencing system (when the IP traffic goes through an NAT router). When NAT is On, the NAT Server Address will be shown in the startup-menu: "My IP Address: 10.0.2.1".

| | |
|-------------|---|
| On | The system will signal the configured "NAT Address" in place of its own IP-address within Q.931 and H.245. |
| Auto | The system will try to determine if the "NAT Address" or the real IP-address should be used within signalling. This is done to make it possible to place calls to endpoints on the LAN as well as endpoints on the WAN. |

NAT Address

This must be the external/global IP-address to the router with NAT support. Packets sent to the router will then be routed to the system. In the router, the following ports must be routed to the system's IP-address:

Port 1720
 Port 5555-5560
 Port 2326-2365

Please contact your TANDBERG representative for further information.

RSVP

| | |
|-------------|---|
| Auto | Resource Reservation Protocol enables the systems to request the optimal amount of bandwidth for the duration of an IP videoconference. |
| Off | Resource Reservation Protocol is switched off. |

H.323 Ports

| | |
|----------------|--|
| Static | When selecting static H.323 ports for TCP connections the ports 5555 to 5565 will be used for Q.931 and H.245 respectively. |
| Dynamic | The system will allocate which ports to use when opening a TCP connection. The reason for doing this is to avoid using the same ports for subsequent calls as some firewall consider this as a sign of attack. |

4.8.2.3 SIP Settings

Mode

| | |
|------------|---|
| On | Setting the SIP mode to on will enable the system for incoming and outgoing SIP calls. |
| Off | Setting the SIP mode to off will disable incoming and outgoing SIP calls from the system. |

Display Name

The Display name part of the SIP Address (URI) is usually a full name or system name.

Examples:

“Alice Wonderland”
“System 01”

SIP Address

The SIP Address is the SIP URI used to address the system.

SIP Address (URI): <text field>

Examples:

“alice@example.com”
“1234”
“1234@example.com”

Server Discovery

| | |
|---------------|---|
| Auto | When Auto is selected, the SIP Server address is obtained using Dynamic Host Configuration Protocol (DHCP). |
| Manual | When Manual is selected, the manually configured SIP Server address will be used. |

Server Address

The Server Address is the manually configured address for the outbound proxy and registrar. It is possible to use a fully qualified domain name, or an IP address. The default port is 5060 for TCP and UDP, but another one can be provided.

Server Address: <text field>

Examples:

```
"sipserver.example.com"  
"sipserver.example.com:5060"  
"10.0.0.2"  
"10.0.0.2:5061"
```

Authentication

User Name

This is the user name part of the credentials used to authenticate toward the SIP Server.

User name: <text field>

Password

This is the password part of the credentials used to authenticate toward the SIP Server.

Password: <text field>

Server Type

Available servers are: Auto, Nortel, Microsoft and Experimental

Current RFC's and Drafts supported:

- RFC 3261 SIP: Session Initiation Protocol
- RFC 2327 SDP: Session Description Protocol
- RFC 3264 An Offer/Answer Model with the Session Description Protocol (SDP)
- RFC 3263: Session Initiation Protocol (SIP): Locating SIP Servers - No support for NAPTR records.
- RFC 3311 The Session Initiation Protocol (SIP) UPDATE Method
- RFC 2976 SIP INFO Method
 - Draft-levin-mmusic-xml-media-control-03.txt - Used for video fast picture update requests
- RFC 3361 Dynamic Host Configuration Protocol (DHCP-for-IPv4) Option for Session Initiation Protocol (SIP) Servers
- RFC 3550 RTP: A Transport Protocol for Real-Time Applications
- RFC 2032 RTP Payload Format for H.261 Video Streams
 - Draft-ietf-avt-rfc2032-bis-06.txt - Draft for advanced video signaling including resolution and mpi.

- RFC 2190 RTP Payload Format for H.263 Video Streams
- RFC 2429 RTP Payload Format for the 1998 Version of ITU-T Rec. H.263 Video (H.263+)
 - Draft-ietf-avt-rfc2429-bis-05.txt - Draft for advanced video signaling including resolution, mpi, annexes and custom formats.
- RFC 3047 RTP Payload Format for ITU-T Recommendation G.722.1
- RFC3581 An Extension to the Session Initiation Protocol (SIP) for Symmetric Response Routing
- RFC3984 RTP Payload Format for H.264 Video
- RFC3016 RTP Payload Format for MPEG-4 Audio/Visual Streams

Media Capabilities supported in SIP:

Audio:

PCMU (G.711 u-law)

PCMA (G.711 a-law)

G.722 64 kbps

G722.1 24kbit

G.722.1 32 kbps

Video:

H.261: QCIF 1/30, CIF 1/30

H.263: SQCIF 1/30, QCIF 1/30, CIF 1/30, 4CIF 2/30

H.263++: XGA 4/30, SVGA 3/30, VGA 2/30, SQCIF 1/30, QCIF 1/30, CIF 1/30, 4CIF 2/30

4.8.2.4 Wireless LAN Settings

SSID (Service Set Identification)

Example "WLANNETWORK". Defines a local network id for this wireless region. It must be the same for all end points and the access point. An endpoint will find the access point if the SSID is correct, however if the encryption key is faulty it will not transmit any data.

Community (optional)

Community can be used when connecting to an access point where the SSID is the same. Example "Unit2".

WLAN Mode

| | |
|----------------|--|
| AdHoc | Used when not communicating with an access point. |
| Managed | Used when communication is made through an access point. |

Make sure the corresponding settings are programmed into the access point. Press "Restart" from Control Panel in order to activate the settings.

Required cards

- Compaq WL110 11 Mbps Wireless LAN
- Lucent Orinoco 11 Mbit/s SILVER
- Lucent Orinoco 11 Mbit/s GOLD
- Cisco Aironet 350 series (AIR-PCM 350 series)
- Enterasys Networks RoamAbout 802.11 DS High Rate
- Melco Buffalo WLI-PCM-L11G

Recommended access point

- Compaq WL410 base station

Note! The PC card/PCMCIA-card used must comply with the relevant regulations for such cards in the country where it is used. The unit must be supplied by power supply (AC-DC adapter) powerbox SPN-270-12, which complies with the requirements for limited power source according to IEC/EN 60950.

Encryption

Select Encryption if you want to use WEP encryption on your Wireless LAN connection. Increased encryption level will decrease performance.

| | |
|-----------------|--|
| Use Key: | Select which of the keys shown below you want to use. |
| Key 1-4 | The 64-bit keys can consist of a leading star (*) and 5 characters. The 128-bit key can consist of a leading star (*) and 13 characters. Start with a * and then the text. Example: 128 bit key: *secretkeyhome. |

Encryption using Hex numbers The 64-bit keys can consist of 10 hexadecimal digits. Example: "de01ad4dbe". The 128-bit key can consist of 26 hex numbers.

4.8.2.5 SNMP Settings

SNMP Settings

SNMP Trap Host identifies the IP-address of the SNMP manager. SNMP (Simple Network Management Protocol, SNMP Ver 1) is used for monitoring and configuring of different entities in a network. The system's SNMP Agent responds to requests from SNMP Managers (a PC program etc.). SNMP traps are generated by the agent to inform the manager about important events.

Traps can be sent to multiple SNMP Trap Hosts. Enter the IP address of up to three SNMP managers. All traps will then be sent to the hosts listed.

SNMP Community names are used to authenticate SNMP requests. SNMP requests must have a 'password' in order to receive a response from the SNMP agent in the codec. Note that the SNMP Community name is case sensitive. The default password is "public".

4.8.2.6 IP Services

NTP IP

This is the NTP time server address from which the system can get updated time information. This is a requirement for proper operation if H.235 authentication is implemented.

The Network Time Protocol (NTP) is used to synchronize the time of the system to a reference time server. The NTP IP setting holds the IP address to a time source where the system can get the exact time. The time server will subsequently be queried every 24th hour for time updates. The system will use the time to timestamp messages transmitted to Gatekeepers or Border Controllers requiring H.235 authentication.

4.8.2.7 Quality of Service

QoS Type

| | |
|----------------------|---|
| Off | No QoS is used. |
| Diffserv | Diffserv QoS method is used. Please see below for details. |
| IP Precedence | IP Precedence QoS method is used. Please see below for details. |

IP Precedence Video

Used to define which priority audio, video, data and signaling should have in the network. The higher the number, the higher the priority. The priority ranges from 0(off) - 7 for each type of packets.

Auto will provide the following priority:

| | |
|-----------|---|
| Audio | 4 |
| Video | 4 |
| Data | 3 |
| Signaling | 6 |

IP Type of Service (TOS) helps a router select a routing path when multiple paths are available.

| | |
|--------------------|---|
| Delay | Tells the router to minimize the delay. |
| Throughput | Tells the router to maximize the throughput. |
| Reliability | Tells the router to maximize the reliability. |
| Cost | Tells the router to minimize the cost. |

IP Precedence Telephony

Used to define which priority audio should have in the network for telephone calls. The higher the number, the higher the priority. The priority ranges from 0(off) - 7 for each type of packets.

Auto will provide the following priority:

| | |
|-------|---|
| Audio | 4 |
|-------|---|

Diffserv Video

Used to define which priority Audio, Video, Data and Signaling packets should have in an IP network. The priority ranges from 0 to 63 for each type of packets.

Diffserv Telephony

Used to define which priority Audio packets should have in an IP network for telephone calls. The priority ranges from 0 to 63 for each type of packets.

4.8.2.8 IEEE 802.1x

802.1X

The system may be connected to an IEEE 802.1x LAN network. Supported 802.1x protocols are EAP-MD5, EAP-PEAP and EAP-TTLS. The 802.1x authentication are enabled by setting 802.1x Mode to On.

| | |
|------------|--------------------------------|
| On | 802.1x authentication enabled |
| Off | 802.1x authentication disabled |

Anonymous Identity

The 802.1x Anonymous ID string is to be used as unencrypted identity with EAP types that support different tunneled identity, EAP-PEAP and EAP-TTLS. The anonymous ID, if set, will be used for the initial (unencrypted) EAP Identity Request.

Identity

The 802.1x Username is the username needed for 802.1x authentication.

Password

The 802.1x Password is the password needed for 802.1x authentication.

EAP-MD5

| | |
|------------|----------------------------------|
| On | The EAP-MD5 protocol is enabled |
| Off | The EAP-MD5 protocol is disabled |

EAP_TTLS

| | |
|------------|-----------------------------------|
| On | The EAP_TTLS protocol is enabled |
| Off | The EAP_TTLS protocol is disabled |

EAP-PEAP

| | |
|------------|-----------------------------------|
| On | The EAP_PEAP protocol is enabled |
| Off | The EAP_PEAP protocol is disabled |

Note that 802.1x wireless LAN is not supported.

4.8.3 Network Profiles

This menu consists of 7 network profiles; a prefix can be added for each profile. If you add a prefix to a profile, this prefix will automatically be added in front of the number being dialed.

Example:

0 is added as a Call Prefix to the 2nd profile, ISDN. If you enter 12345678 in the dial menu and select ISDN, the number dialed will be 012345678.

Using the three last profiles you can enter the name of a profile, prefix and network selection. This is useful if you have a fixed prefix for your service provider.

4.8.4 Restore Default Settings

Restore Default Settings will restore all administrator settings. Note that this will not affect your Call Directory information, Network Type, Line Setup numbers or your SPID numbers.

Note that when holding the headset / speaker button while turning on the power, and while the notification lamp is flashing, it is possible to press:

- The number button 1 to restore default values.
- The number button 2 to reformat flash disk.
- The number button 3 to swap images.

While the notification button is flashing even faster, press the # button in order to confirm the choice.

5 Interfaces

This chapter describes details on the available connectors on the back of the system.

- [Video](#)
- [Audio](#)
- [Network](#)

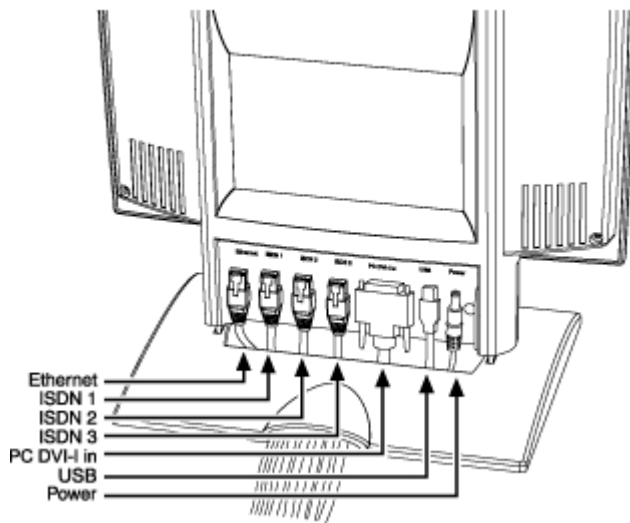


Figure 5-1. Connectors.

5.1.1 Video

1 Video Input

- 1 VGA/DVI-I (DVI = Digital Video Interface, I = Integrated Digital & Analog) input supporting resolutions SVGA (800x600), XGA (1024x768) and SXGA (1280x1024), analog or digital.

DVI and specifications:

DVI stands for Digital Video Interface, and is a form of video interface technology made to maximize the quality of flat panel LCD monitors and high-end video graphics cards.

The TANDBERG codec contains a DVI-I plug that can transmit either digital DVI signals or standard analog VGA signals, depending on what type of monitor is connected.

DVI Specifications

TANDBERG DVI-I follows the VESA Monitor Timing Standard v1.08, also known as Display Monitor Timing (DMT).

| Analog | Horizontal Frequency | Vertical frequency | Pixel Clock |
|-----------------|----------------------|--------------------|-------------|
| 800x600 @ 75Hz | 46.875kHz | 75.00Hz | 49.50MHz |
| 1024x768 @ 60Hz | 48.363kHz | 60.004Hz | 65.00MHz |
| Digital | | | |
| 800x600 @ 75Hz | 46.875kHz | 75.00Hz | 49.50MHz |
| 1024x768 @ 60Hz | 48.363kHz | 60.004Hz | 65.00MHz |

Table 6. DVI-I Video resolution supported in F1 and above

Supported DVI cables:

TANDBERG supports DVI-D Single-Link, DVI-A and DVI-I Single-Link format cables.

DVI-D cables transmit digital T.M.D.S. signals, DVI-A cables transmit analog VGA signals and DVI-I cables can transmit either digital or analog signals.

It is possible to extend existing DVI cables by the use of extension cables. The maximum cable length however, is 5 meters. Going beyond that may result in quality loss.

| Pin | Signal Assignment | Pin | Signal Assignment | Pin | Signal Assignment |
|-----|-------------------------|-----|--|-----|-------------------------|
| 1 | T.M.D.S. Data2- | 9 | T.M.D.S. Data1- | 17 | T.M.D.S. Data0- |
| 2 | T.M.D.S. Data2+ | 10 | T.M.D.S. Data1+ | 18 | T.M.D.S. Data0+ |
| 3 | T.M.D.S. Data2/4 Shield | 11 | T.M.D.S. Data1/3 Shield | 19 | T.M.D.S. Data0/5 Shield |
| 4 | T.M.D.S. Data4- | 12 | T.M.D.S. Data3- | 20 | T.M.D.S. Data5- |
| 5 | T.M.D.S. Data4+ | 13 | T.M.D.S. Data3+ | 21 | T.M.D.S. Data5+ |
| 6 | DDC Clock | 14 | +5V Power | 22 | T.M.D.S. Clock Shield |
| 7 | DDC Data | 15 | Ground (return for +5V, HSync and VSync) | 23 | T.M.D.S. Clock+ |
| 8 | Analog Vertical Sync | 16 | Hot Plug Detect | 24 | T.M.D.S. Clock- |
| C1 | Analog Red | C2 | Analog Green | C3 | Analog Blue |
| C4 | Analog Horizontal Sync | C5 | Analog Ground (analog, R, G & B return) | | |

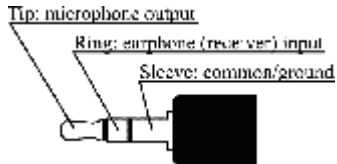
Table 7. DVI-I - Combined Analog and Digital Connector Pin Assignments.

5.1.2 Audio

All audio inputs are active by default. For further information, refer to chapter [Audio](#).

Headset

- 1 headset connector, 2.5mm 3-pole mini-jack.



The headset plug must have the following configuration:

- Tip:** microphone output
Ring: earphone (receiver input)
Sleeve: common/ground

Headsets with the microphone positioned in front of the user's mouth, connected to the earphone through a rod, tend to give more echo than earbud headsets with the microphone attached to the cord. TANDBERG recommends the Plantronics MX100 headset (www.plantronics.com, products → mobile).

5.1.3 Network

Ethernet:

1 x Ethernet (RJ-45 Jack) LAN interface (10/100 Mb) up to 768kbps

To connect the system to a LAN, use the Ethernet cable provided by TANDBERG (or a standard Ethernet cable).

The cable specification is:

```
1 ----- 1
2 ----- 2
3 ----- 3
6 ----- 6
```

If no LAN is available and the codec is connected directly to a computer, use a crossover cable.

The crossover cable specification is:



If such a connection is needed, the system and the PC must use 'static' TCP/IP settings because no DHCP server is controlling the small "LAN", which has been created between the computer and the system. When configuring a back-to-back connection between the PC and the system, make sure both static IP addresses exist on the same subnet.

ISDN BRI Interface:

ISDN I.420 (RJ-45 Jack) Basic Rate Interface S/T (2B+D), 128 kbps per ISDN I/F

To connect the system to BRI, use the ISDN cable provided by TANDBERG (or a standard BRI cable).

The pinout of the S/T interface is:

| BRI | Pinout |
|-------|--------|
| Pin-3 | TX+ |
| Pin-4 | RX+ |
| Pin-5 | RX- |
| Pin-6 | TX- |

6 Appendices

Appendices:

- [Appendix 1: Technical Specification](#)
- [Appendix 2: Bandwidth Information](#)
- [Appendix 3: Environmental considerations](#)
- [Appendix 4: Guidelines for setting up videoconferencing rooms](#)
- [Appendix 5: Security](#)
- [Appendix 6: Using the file system](#)
- [Appendix 7: Web Interface](#)
- [Appendix 8: Connecting the system to ISDN using NT1 network adapters](#)
- [Appendix 9: Remote control](#)
- [Appendix 10: CallManager registration](#)
- [Appendix 11: Diagnostic Tools for IP](#)
- [Appendix 12: System Upgrade](#)
- [Appendix 13: Declaration of Conformity](#)

Appendix 1

Technical Specification

UNIT DELIVERED COMPLETE WITH:

Wireless remote control, built-in camera, microphone, speakers, cables, 12.1" LCD screen, robust cabinet, LED light source

LCD SCREEN

Wide view angle screen
XGA resolution
Auto or manual brightness
Display Area (mm) 245.8 x 184.3 (12.106-inch diagonal)
Number of Dots 1024 x 3 (H) x 768 (V)
Pixel Pitch (mm) 0.240 (H) x 0.240 (V)
Color Pixel Arrangement RGB vertical stripe
Display Mode normally white
Optimum Viewing Angle (Contrast ratio) 6 o'clock
Brightness (cd/m2) 300

BANDWIDTH (770/880/990)

H.320 up to 384 kbps
H.323 up to 768 kbps
SIP up to 768 kbps

FIREWALL TRAVERSAL

TANDBERG Expressway Technology™
Auto NAT

VIDEO STANDARDS

H.261, H.263, H.263+, H.264

VIDEO FEATURES

Intelligent Video Management
Picture in Picture (PIP)
Dual Monitor Emulation (Side by Side)
PC Zoom
Simultaneous videoconference & local PC mode

VIDEO INPUTS (1 INPUT)

Built-in main camera
1 x DVI-I/SXGA: PC
Input: 800 x 600 (@ 60, 72, 75, 85 Hz), 1024 x 768 (@ 60, 70, 75 Hz), 1280 x 1024 @ 60 Hz
Extended Display Identification Data (EDID)

VIDEO FORMAT

NTSC, PAL, VGA, SVGA, XGA, or SXGA

LIVE VIDEO RESOLUTIONS

NATIVE NTSC:

4SIF (704 x 480 pixels), Digital Clarity
SIF (352 x 240 pixels)

NATIVE PAL:

4CIF (704 x 576 pixels), Digital Clarity
CIF (352 x 288 pixels)
QCIF (176 x 144 pixels)
SQCIF (128 x 96 pixels) receive only

SECURITY FEATURES

Management via HTTPS
IP Administration Password
Menu Administration Password
Dialing Access code
Streaming password
H.243 MCU Password
VNC password
SNMP security alerts
Disable IP services
MD-5 Challenge
Network settings protection
SIP Authentication via NTLM and Digest Authentication
IEEE 802.1x

NETWORK INTERFACES

3 x ISDN BRI (RJ-45), S-inter face
1 x LAN / Ethernet (RJ-45) 10/100 Mbit
(LAN / DSL /cable modem)
1 x PC card slot (PCMCIA) for wireless LAN
1 x USB

WIRELESS LAN SUPPORT

Compliant with IEEE 802.11b, up to 11 Mbit
Support for 64 / 128 bit encryption (WEP)
Infrastructure or ad-hoc mode

ETHERNET / INTERNET / INTRANET CONNECTIVITY

TCP / IP, DHCP, ARP, FTP, Telnet, HTTP, HTTPS,
SOAP and XML, MD-5 Challenge
SNMP Enterprise Management
Internal web server
Internal streaming server

OTHER MAJOR STANDARDS SUPPORTED

H.231, H.233, H.234, H.235 v2&v3, H.239, H.241, H.243,
H.281, BONDING (ISO 13871), H.320, H.323, H.331
RFC 3261, RFC 2237, RFC 3264, RC 3311, RFC 3550,
RFC 2032, RFC 2190, RFC 2429, RFC 3407, H.460.18,
H.460.19

CAMERA

1/4" CCD
752(H) x 582(V) resolution
Lens: f=4mm F1:1.2
64° horizontal field of view
49° vertical field of view
Minimum illumination 5.0 lux (video output 50%, AGC on)
Manual focus

CLOSED CAPTIONING/TEXT CHAT

T.140 text chat available from Telnet,
Web and User Inter face

NATIVE PC RESOLUTIONS:

XGA (1024 x 768 pixels)
SVGA (800 x 600 pixels)
VGA (640 x 480 pixels)

STILL IMAGE TRANSFER

CIF, SIF, 4CIF (H.261 Annex D), 4SIF, VGA, SVGA, XGA

AUDIO STANDARDS

G.711, G.722, G.722.1, G.728, 64 bit MPEG4 AAC-LD

AUDIO FEATURES

CD-Quality 20KHz Mono
Automatic noise reduction
Acoustic echo canceller
Automatic gain control
Packet loss management
Active lip synchronization
GSM / Blackberry noise filter

PRIVACY FEATURE

Headset, 2.5 mm mini jack

FRAME RATES

30 frames per second @ 168 kbps and above

DUAL STREAM

Duo Video & H.239
Available on H.323 & H.320

NETWORK FEATURES

Auto H.320 / H.323 dialing
SIP
Downspeeding
Programmable network profiles
Intelligent Call Management
Maximum call length timer
Automatic SPID and line number configuration
(National ISDN, GR-2941-CORE)
SoftMux
URI Dialing
IP version 6

EMBEDDED ENCRYPTION

H.320 and H.323 point-to-point calls
Standards-based: H.233, H.234, H.235 v2&v3,
DES and AES
NIST-validated AES
NIST-validated DES
Automatic key generation and exchange
Supported in Dual Stream

IP NETWORK FEATURES

H.235 Authentication
Differentiated Services (DiffServ)
Resource Reservation Protocol (RSVP)
IP precedence
IP type of service (ToS)
IP adaptive bandwidth management
(including flow control)
Auto gatekeeper discovery
Dynamic playout and lip-sync buffering
Intelligent Packet Loss Recovery (IPLR)
H.245 DTMF tones in H.323
Cisco Call Manager integration using ECS
IP Address Conflict Warning

PRESENTATIONS AND COLLABORATION

Natural Presenter Package including:
PC Presenter (DVI-I, SXGA In)
PC SoftPresenter
Digital Clarity & Native Formats
Dual Monitor Emulation (Side by Side)
Streaming compatible with Cisco IP/TV, Apple
QuickTime®, RealPlayer® v8 etc.

SYSTEM MANAGEMENT

Support for the TANDBERG Management Suite
Total management via embedded web server, SNMP,
Telnet, FTP and SOAP
Remote software upload :via web server or FTP server

DIRECTORY SERVICES

Support for Local, Global and Dynamic Server
Directories
Unlimited entries using Server directory* supporting
LDAP
and H.350
400 number global directory
200 number local directory
Last Number Called
Call History
Directories in Local Languages

16 SELECTABLE MENU LANGUAGES

English, German, French, Norwegian, Swedish, Italian,
Spanish, Portuguese, Simplified Chinese, Traditional
Chinese, Japanese, Russian, Korean, Finnish, Thai and
Arabic

CUSTOMIZED BOOT UP LOGO (JPEG)

POWER

Auto-sensing power supply
100 – 250 VAC, 50 – 60 Hz
45 watts max.

OPERATING TEMPERATURE AND HUMIDITY

0° C to 35° C (32° F to 95° F) ambient temperature
10% to 90% Relative Humidity (RH)

STORAGE AND TRANSPORT TEMPERATURE

-20° C to 60° C (-4° F to 140° F) at RH 10-90% (non-
condensing)

APPROVALS

Directive 73/23/EEC (Low Voltage Directive)
-Standard EN 60950
Directive 89/336/EEC (EMC Directive)
-Standard EN 55022, Class B
-Standard EN 55024
-Standard EN 61000-3-2/-3-3
Directive 1999/5/EEC (R&TTE Directive)
-Standard TBR3
Approved according to UL 60950 and
CAN/CSA C22.2 No. 60950
Complies with FCC15B Class B

PRODUCT RELIABILITY / MTBF

The predicted reliability is expressed in the expected random Mean Time Between Failures (MTBF) for the electronic components based on the Power On Hours:

Power On Hours (POH) > 69 000 hours

Useful Life Cycle > 6 years

ISO 9001 certificate is available upon request

* Requires TANDBERG Management Suite 9.0 or newer

System features vary depending on network selection and software package. All specifications subject to change without notice. TANDBERG is a registered trademark or trademark of TANDBERG in the U.S. and other countries. RealPlayer is a trademark or a registered trademark of RealNetworks, Inc. QuickTime is a registered trademark of Apple Computer, Inc., registered in the U.S. and other countries. Microsoft and NetMeeting are either registered trademarks or trademarks of Microsoft Corporation in the United States and/or other countries. All other trademarks are property of their respective owners. Contains iType™ from Agfa Monotype Corporation

Service availability may vary from region to region. Please contact your TANDBERG reseller for more information.

Appendix 2

Bandwidth information for TANDBERG Compass / Utility MXP

| | Utility / Compass MXP |
|------------------------------------|--|
| Bandwidth Point to point ISDN / IP | Standard: 768 (IP only) Options: 128 / 768, 384 / 768 |
| MultiSite | Not Available |
| Rate Matching | Not Available |
| Dual Stream (DuoVideo / H.239) | Standard |
| Secure Conference | All bandwidths |
| H.264 | Up to 768 |
| Picture Mode MultiSite | Not Available |

Appendix 3

Environmental considerations

This section explains how to carry out basic adjustments and simple tests to ensure that you send and receive the best possible image and audio quality when using your system.

Iris control and lighting

By default the system camera will use an automatic iris to compensate for changes in lighting. In addition to this feature, you may further assist the system to maintain the best possible image quality by paying special attention to environmental lighting and background colors as described below. Remember the system will send live images of yourself *and* your immediate surroundings.

- Avoid direct sunlight on the subject matter i.e. yourself, the background or onto the camera lens as this will create harsh contrasts.
- If light levels are too low you may need to consider using artificial lighting. As described above, direct illumination of the subject matter and camera lens should be avoided.
- When using artificial lighting, daylight type lamps will produce the most effective results. Avoid colored lighting.
- Indirect light from shaded sources or reflected light from pale walls often produces excellent results.
- Avoid harsh side lighting or strong light from above. Strong sunlight from a window or skylight may put part or all of the subject matter in shadow or cause silhouetting.
- If you still have problems with the iris and lighting, manual adjustment of the camera parameters might help – see Video Settings menu.
- Dim scenes can also be improved by manually adjusting the camera brightness setting.

Background

The appearance of the picture background is very important but easily overlooked. It is important to remember that the camera also shows what is behind you when in a videoconference. To ensure a suitable background we recommend you consider the following:

- Use a neutrally colored background with a medium contrast and a soft texture, e.g. a plain curtain with no heavy patterns or strong colors that may adversely tint the whole scene.
- Avoid moving backgrounds such as curtains blowing in a draught, moving objects, or people walking behind as this may both reduce image quality and distract the attention of the calling party.
- Do not place the camera facing a doorway.

Loudspeaker volume

The audio system will use the Digital Natural Audio Module (DNAM) if available and supported by the system. The volume of the audio system is controlled by the Volume Control keys on the system remote control.

Appendix 4

Guidelines for setting up videoconferencing rooms

The following are a set of guidelines to consider when either building a videoconferencing room, or using an existing room for videoconferencing.

Lighting:

- Low Contrast desired for light intensity. No dark spots.
- Intensity @ table 800 - 1400 Lux as measured with an Incident light meter.
- Block sunlight from entering room.

Seating Area (Table):

- Should allow all participants to see Monitors.
- Should allow camera to “see” all participants.
- Non-shiny non-patterned preferably light grey surface (if table used).

Walls:

- Color: Generally high contrast color desired. Light blue is commonly used.
- Acoustically reflective surfaces (such as glass or concrete) should be covered with curtains or sound treatment.

Audio:

- Noise Floor preferred less than 44dBC.
- Reverb Time 0,3 to 0,5 sec.

Ventilation:

- Keep in mind Noise Floor.
- Velocity = Noise. Therefore keep velocity of air low.

Room:

- Should be located away from noise.
- Should not have windows.
- Doors should be located off camera.

How to prepare a typical room for videoconferencing:

The illustration below shows the principles of a typical room designed to obtain the best results when using a videoconference system.

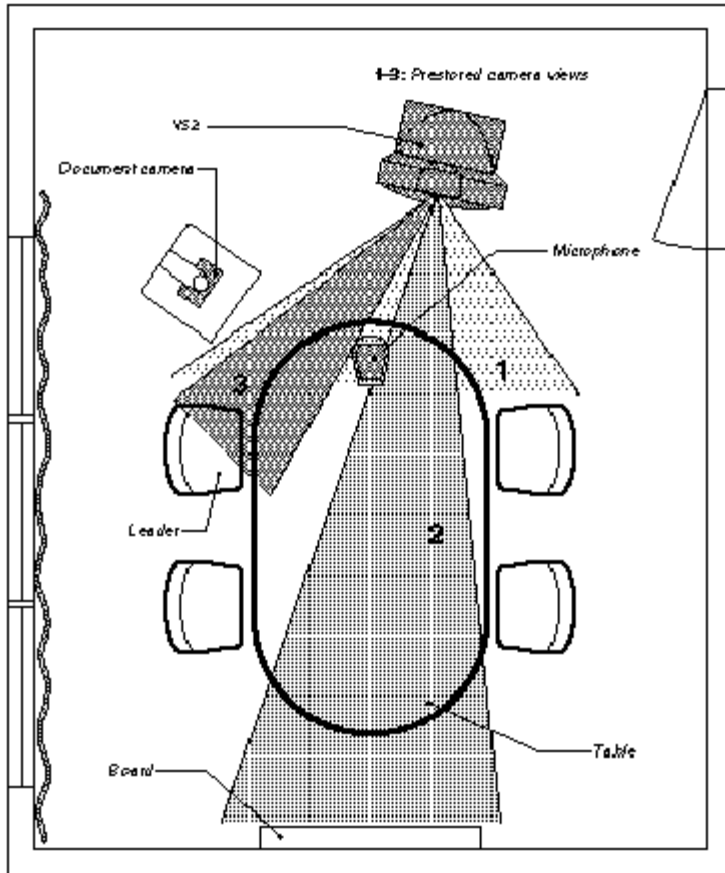


Figure 6-1. Video conferencing room.

If the system has a separate microphone, it should be placed at the front of the table to ensure that all speech will be detected. The best position for the microphone is at least 2 meters (6.5 feet) in front of the system on a plain, flat table with at least 0.3 meters (12 inches) of table in front of the microphone.

The document camera should be close to the chair person or a designated controller of the document camera for ease of use (remember to arrange all the peripherals so that one participant can reach each of them to point, change the display, tape, and so forth).

The camera supports up to 15 pre-stored camera positions.

The illustration shows three possible camera positions; one for all the participants, one for the whiteboard and one for the main speaker. The remaining camera presets are then available for other peripheral equipment, for example a VCR.

Position the system in such a way as to avoid the possibility of somebody inadvertently walking into the camera's field of view when entering the room. Other than the conference participants, there should be no moving items in the sent image.

Appendix 5

Security

The system has several features both to protect from unauthorized use and system access:

Access Code:

When Access Code is enabled, the user will be asked to enter an access code before he/she is able to make a call. The system will verify if the entered access code is valid by checking the code with the allowed codes listed in the access.txt file on the ftp-server in the system. If no access.txt file is uploaded to the system, registration of the code will be done without validation. E.g. you can enter whatever code you want and have access to the system.

The access.txt file is a plain text file with one line per access code as shown below:

```
1234
1250
A1
B2
ABC
```

To upload this file to the system, follow these steps:

- Open a DOS-window and go to the folder where the 'access.txt' file is located.
- Type ftp <IP-address of your local system>.
- User: press Enter or enter IP-password.
- Type "bin" and press Enter.
- Go to the user folder, type "cd user".
- Upload the 'access.txt' file, type 'put access.txt'.
- Exit from ftp, type "bye".

Administrator Password

Access to the administrator menu on the system unit can be controlled using password protection. You can set the Administrator Password in Menu Settings, in Security or from the dataport:

menupassword set <pin-code>. The pin-code should be maximum 5 - five digits. To erase the password, enter an empty pin-code.

Streaming password

By setting a streaming password in the streaming menu on the system, a password has to be entered on the streaming client to be able to see the video stream from the system.

IP Password

By setting an IP Access Password on the system, all access to the system using IP (Telnet, FTP and WEB) requires a password. This password can be enabled from telnet or dataport using the command: `ippassword <ip-password>`. The default IP username and password is "TANDBERG". To remove this password, use the command: `"ippassword "`. From telnet, this is only possible by first entering the correct password.

IP Services

The different IP services on the system - FTP, Telnet, Telnet Challenge, HTTP, HTTPS, SNMP and H.323 can be disabled to prevent access to the system. By using the commands below, the services can be independently enabled/disabled:

```
xconfiguration Telnet/TelnetChallenge/FTP/HTTP/HTTPS/H323 Mode: <On/Off>
xconfiguration TelnetChallenge Mode: <On/Off> [port]
xconfiguration SNMP Mode: <On/Off/ReadOnly/TrapsOnly>
```

SNMP Security alert

This function will notify any Management Application (such as TMS - TANDBERG Management Suite) if anyone tries to perform Remote Management on the system using an illegal password. The Security alert that is sent to the Management Application will contain information about the IP address and the service (WEB, Telnet, FTP) being used for the attempt. If TMS is used, email notifications or alarms about the attempt can be sent to specified persons.

Encryption

All TANDBERG systems support both AES and DES encryption. By default this feature is enabled such that when connecting with any other video system or MCU, a TANDBERG system will attempt to establish a secure conference using AES or DES encryption. The TANDBERG system will attempt this for both IP and ISDN connections. Where a remote system or MCU supports encryption, the highest common encryption algorithm will be selected on a port-by-port basis.

The type and status of the encryption negotiated is indicated by padlock symbols and on-screen messages. Encryption on the TANDBERG systems is fully automatic, and provides clear security status indicators;

- An open padlock indicates that encryption is being initialized, but the conference is not yet encrypted.
- Single padlock indicates DES encryption.
- Double padlock indicates AES encryption.

In addition to on-screen indicators the Call Status menu provides two information fields regarding call encryption. The first field is the Encryption Code, which will identify either AES or DES. The second field is the Encryption Check Code and is comprised of an alphanumeric string. This string will be the same for systems on either side of an encrypted conference. If the Check Codes do not match, this would indicate that the call has been exposed to a Man In The Middle attack.

When a system with MultiSite functionality hosts a conference, the highest possible encryption algorithm will be negotiated on a site-by-site basis. MultiSite conferences can therefore support a mix of AES and DES encrypted endpoints in the same conference. A conference will only be as secure as its weakest link.

TANDBERG COMPASS MXP / UTILITY MXP

All systems supporting DES encryption can upgrade to AES encryption. Please contact your TANDBERG representative for more information. The standards supporting the encryption mechanisms employed by TANDBERG are: AES, DES, H.233, H234 and H.235 (H235v3 & v2 for backwards compatibility) with extended Diffie Hellman key distribution via H.320, H.323 and Leased Line connections.

The TANDBERG AES implementation is validated as conforming to the Advanced Encryption Standard (AES) Algorithm, as specified in Federal Information Processing Standard Publication 197, *Advanced Encryption Standard*, by The National Institute of Standards and Technology (NIST).

IEEE 802.1x / EAP (Extensible Authentication Protocol)

This is a standard for authentication and authorization of units/systems onto the network.

Static configuration

- System ID and Password
- Anonymous ID for encryption challenge
- Enable methods

Supported methods

- MD5 (simple challenge)
- PEAP (encrypted channel)
- TTLS

Note that 802.1x wireless LAN is not supported.

Appendix 6

Using the file system

It is possible to access a file system within the TANDBERG system by using ftp:

| | |
|--------------|--------------------------------|
| DOS-window: | ftp <IP-address of system>, or |
| Web-browser: | ftp:// <IP-address of system> |

Description of the different files:

| | |
|-------------|---|
| all.prm | all settings in the system (including directory) |
| dir.prm | directory entries (up to 200 entries) |
| event.log | logs fault situations etc. |
| sw.pkg | the system software |
| globdir.prm | file containing up to 400 entries. These entries can not be edited from the system, but can be edited as a text-file. |

Custom logos

- Go to the folder where your logo is located.
- Type "ftp <IP-address of your local system>".
- Go to the user folder, type "cd user".
- Upload the logo, type "put <logo.jpg>".

The new logo will be displayed the next time you restart your system. Recommended maximum size is: 704x576, file-format: jpg. If the file is too large, no logo will be displayed.

Appendix 7

Web Interface

It is possible to access and maintain the system remotely via a local area network (LAN) using a standard Web-browser. Connect your system to a LAN with a Network cable.

How to configure your system for web interface:

1. Open Administrator Settings and choose Network\LAN Settings
2. Specify IP-assignment DHCP or Static. If DHCP is selected, no other settings are needed. If Static is selected, IP-address, IP-subnet mask and Gateway must be specified.
3. Start your Web-browser. In the address field type the IP-address of the system. Enter the password and the Web-page of the system will be shown. The default password is TANDBERG.
4. Restart the system. Choose Restart from the Control Panel.

Example:

| | |
|-----------------|---------------|
| IP-assignment: | Static |
| IP-address: | 196.9.200.129 |
| IP-subnet mask: | 255.255.255.0 |
| Gateway: | 196.9.200.21 |

Appendix 8

Connecting the system to ISDN using NT1 network adapters

Connecting

Connect the first ISDN cable from ISDN 1 on the system to the S-interface on your first NT1 network adapter. Connect the other ISDN cables to the appropriate NT1 network adapters. Connect the U-interface of your NT1 adapter to the line provided from your network provider.

For convenience the NT1 adapters could be placed inside the cabinet. If needed, use the shorter ISDN cable (RJ45 connectors) delivered with the NT1 between the codec and the NT1 and the longer ISDN cable between the NT1 and the connector (RJ45) at the wall socket.

Configuring

The configuration of the system is performed in the same manner as described in ISDN BRI Settings.

The NT1 should be powered up and you should check that the network is active. Please check your NT1 User Manual.

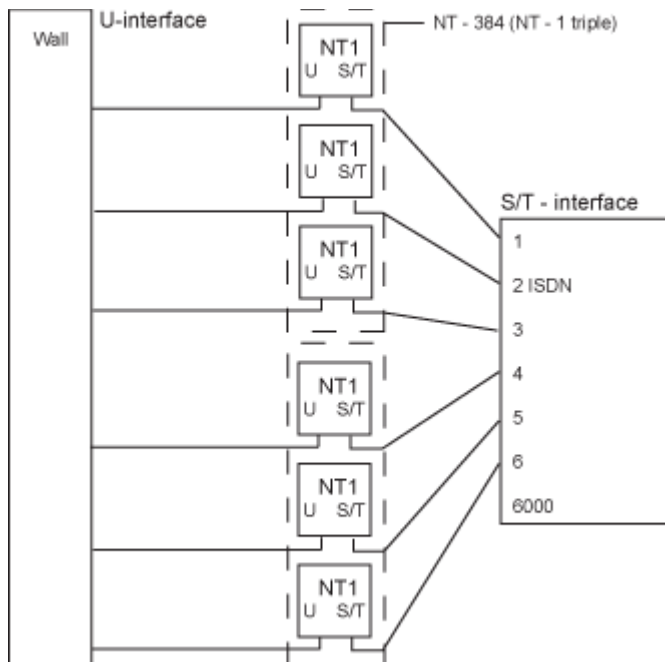


Figure 6-2. Connecting to ISDN using NT1.

Appendix 9

Remote Control (TRC 3)

The TANDBERG remote control transmits IR-signals using the following parameters:

| | |
|----------------------|-----------------|
| Protocol | Siemens SDA2208 |
| Reference frequency | 485kHz |
| Address | 4 & 7 |
| IR wavelenght | 940nm |
| IR carrier ferquency | 30kHz |

Remote Control keycode map:

| Button codes | | Remote control | | Button codes | | Remote Control | |
|--------------|-----|----------------|-------------|--------------|-----|----------------|-------------|
| Decimal | Hex | Address | Button name | Decimal | Hex | Address | Button name |
| 0 | 00 | | | 33 | 21 | 0 | OK |
| 1 | 01 | 0 | NUMBER 1 | 34 | 22 | 0 | CALL |
| 2 | 02 | 0 | NUMBER 2 | 35 | 23 | 0 | END CALL |
| 3 | 03 | 0 | NUMBER 3 | 36 | 24 | 0 | PHONE BOOK |
| 4 | 04 | 0 | NUMBER 4 | 37 | 25 | 0 | MENU |
| 5 | 05 | 0 | NUMBER 5 | 38 | 26 | 0 | CANCEL |
| 6 | 06 | 0 | NUMBER 6 | 39 | 27 | 0 | |
| 7 | 07 | 0 | NUMBER 7 | 40 | 28 | 0 | PRESETS |
| 8 | 08 | 0 | NUMBER 8 | 41 | 29 | | |
| 9 | 09 | 0 | NUMBER 9 | 42 | 2A | | |
| 10 | 0A | 0 | NUMBER 0 | 43 | 2B | | |
| 11 | 0B | 0 | * | 44 | 2C | | |
| 12 | 0C | 0 | # | 45 | 2D | | |
| 13 | 0D | | | 46 | 2E | | |
| 14 | 0E | | | 47 | 2F | | |
| 15 | 0F | | | 48 | 30 | | |
| 16 | 10 | | | 49 | 31 | | |
| 17 | 11 | | PRESENTER | 50 | 32 | | |
| 18 | 12 | 0 | | 51 | 33 | | |
| 19 | 13 | | | 52 | 34 | | |
| 20 | 14 | | | 53 | 35 | | |
| 21 | 15 | | | 54 | 36 | | |
| 22 | 16 | 0 | ZOOM OUT | 55 | 37 | | |
| 23 | 17 | 0 | ZOOM IN | 56 | 38 | | |
| 24 | 18 | | | 57 | 39 | | |
| 25 | 19 | 0 | VOLUME DOWN | 58 | 3A | | |
| 26 | 1A | 0 | VOLUME UP | 59 | 3B | | |
| 27 | 1B | 0 | MIC OFF | 60 | 3C | | |
| 28 | 1C | | | 61 | 3D | | |
| 29 | 1D | 0 | UP | 62 | 3E | | |
| 30 | 1E | 0 | DOWN | 63 | 3F | 0 | WAKE UP |
| 31 | 1F | 0 | LEFT | 25 | 19 | 3 | LOW BATT |
| 32 | 20 | 0 | RIGHT | XX | | 3 | PROG VER |

Appendix 10

Cisco CallManager registration

Configuring an H.323 client on the CallManager 4.0

The registration of a H.323 client in CallManager is supported on the CallManager (CCM) 4.0 software and forward.

1. To configure the CallManager with an H.323 client, log on to the administration web interface and go to the phone configuration page.
2. The Phone configuration page is located on: device (top menu) -> Add a New device -> Phone -> H.323 Client.
3. In the phone configuration page type the IP address of the TANDBERG system in the Device name field, select device pool and push the insert button.
4. A pop-up box will now appear on the screen and ask you if you would like to configure the directory number. Push the ok button.
5. You should now see the Directory Number Configuration WEB page. Enter the E.164/phone number of your TANDBERG system in the Directory number field, and in the "Forward and Pickup Settings" enter the time of "No Answer Ring Duration". The time selected has to have a value from 1 to 300 seconds.
6. Push the Add button to update the CallManager with the directory number settings.

You have now configured the CallManager with a H.323 client and should be able to register the TANDBERG system to it. When the TANDBERG system is registered to a CallManager, it will be possible to place and receive calls from this system to any other video and voice systems that are registered on the same CallManager.

Appendix 11

Diagnostic Tools for IP

To use these tools, will require using a PC and setting up a telnet session towards the system.

Q.931

To show Q.931 trace during a call you need to issue the command 'syslog on'. One can get traces for RAS, Q.931 and H.245 with this command. It is a complex trace and requires an extensive knowledge in H.323 signalling to be understood.

Ping

Ping is used to see if the system is able to reach a specific IP-address, using a mechanism in IP called ICMP. If the system is unable to register to its gatekeeper, or if it is unable to dial a specific endpoint, one can use ping to see if there is at least an IP-route to the gatekeeper or to the endpoint. In case you have problems, one would first ping the default gateway, then the gatekeeper, and then the other endpoint.

Traceroute

Traceroute does exactly that; it traces the route an IP-packet takes to reach its destination and displays all router hops. Traceroute is very useful for seeing exactly where there is a routing-problem in the IP-network, and for checking where transport-delay is introduced.

Layer 4 Ports used in H.323 calls

The layer 4 ports used by the system in a H.323 call can be defined as follows:

- Dynamic: The ports are allocated at random from 2048 to 65535.
- Static: Will use the predefined layer 4 ports listed in the tables below.

| Function | Port | Type |
|----------------------------|-----------------|------|
| Gatekeeper Discovery (RAS) | 1719 | UDP |
| Q.931 Call Setup | 1720 | TCP |
| H.245 | Range 5555-5565 | TCP |
| Video | Range 2326-2341 | UDP |
| Audio | Range 2326-2341 | UDP |
| Data/FECC | Range 2326-2341 | UDP |

Table 8. Point-to-point + Duo Video.

| Function | Port | Type |
|----------------------------|-----------------|------|
| Gatekeeper Discovery (RAS) | 1719 | UDP |
| Q.931 Call Setup | 1720 | TCP |
| H.245* | Range 5555-5565 | TCP |
| Video | Range 2326-2405 | UDP |
| Audio | Range 2326-2405 | UDP |
| Data/FECC | Range 2326-2405 | UDP |

Table 9. MultiSite + Duo Video.

(*) Note: While using MultiSite, if a site is disconnected and reconnected without terminating the entire conference, the next site to be connected will have a H.245 port outside of the specified range. If this functionality is required through a firewall, the range of TCP ports can be extended past 5564. However, if a site is disconnected and reconnected, without ending the conference enough times one can quickly end up outside of this range again.

Appendix 12

System Upgrade

Before starting the software upgrade of the TANDBERG MXP system, please make sure to have the new software file, (for instance s050000F30.pkg) and the Release Key for this software available. Your TANDBERG Partner will provide this for you.

All options and settings will automatically be stored when upgrading, so no backup is necessary.

If the system upgrade process is aborted before it's complete, the system will work as normal with the original software

The TANDBERG MXP systems can be upgraded in three different ways;

- **Using the web interface**
- **Using FTP**
- **Using ISDN**

A) To upgrade using the the web interface, please do the following steps:

1. Type the IP address of the TANDBERG MXP system that shall be upgraded (for instance 10.0.8.77) in a standard browser, such as Internet Explorer 6.0.
2. The web interface of the codec will then be displayed. Select the 'System Configuration' tab on top of the page, and then the sub-tab 'Upgrade'.

The following page will now be displayed:

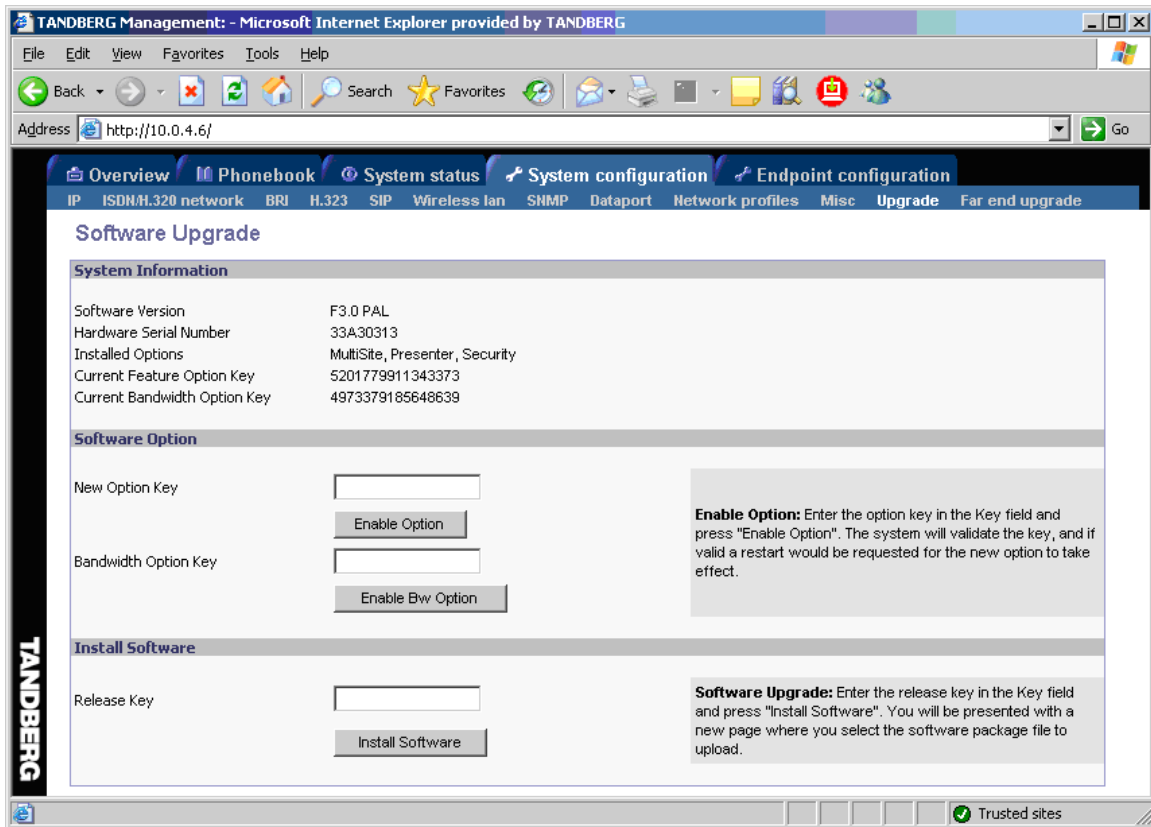


Figure 6-3.

3. Enter the Release key in the 'Release Key' field and press the 'Install Software' button.

A new page will now be displayed:

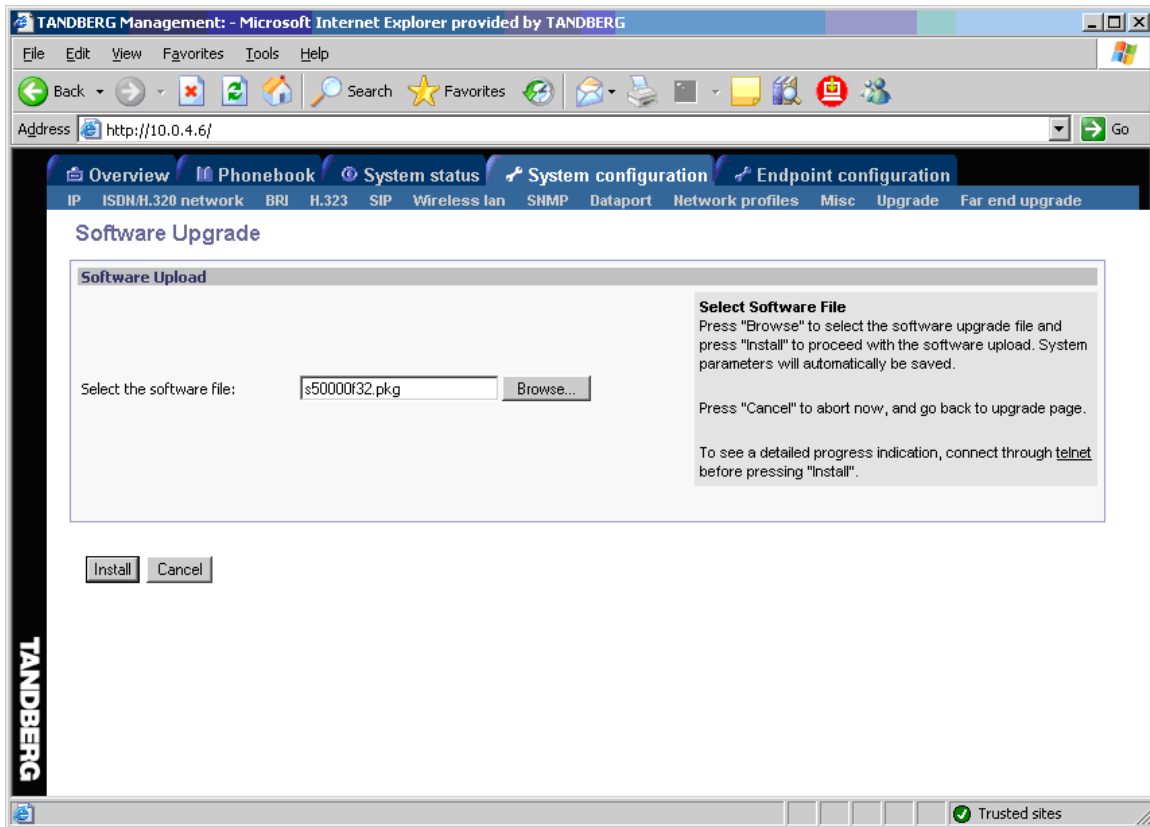


Figure 6-4.

4. Type in the path to where the new software file is stored, or select the file by using the 'Browse' button.
5. The progress for the sw upgrade can be tracked by pressing the 'telnet' link in the help text box BEFORE pressing the install button. Please note that this is not a necessary action for a successful software upgrade. An indication of the software upgrade progress will also be shown on the display of the system
6. Press the 'Install' button to start the software upgrade.

When the software upgrade is complete, you need to click on the restart button and press OK to restart the system in order to activate the new software. Once verified, the system will reboot once more to complete the upload of all systems parameters kept from the old software revision.

7. To verify that the new sw is installed, refresh the page shown in figure1 after restart. The 'Software Version' should now show the new software version uploaded to the system. The same information can also be found in the menu on the system under 'Control Panel/System Information'.

B) Upgrading using FTP:

1. Copy the new software file to a folder on your harddisk, for instance c:\software.
2. Open a DOS window, and go to the folder where the new software is stored.
3. Type ftp <ip address of the TANDBERG MXP system>.
4. Type in the supplied 'Release Key' as user.

TANDBERG COMPASS MXP / UTILITY MXP

5. Type in your IP password (default is "TANDBERG") as password.
6. Type 'put <software file name>' and press Enter. The new software file will now be uploaded to the TANDBERG MXP system.
7. When the software upload is complete, end the ftp connection to the TANDBERG MXP system by typing 'bye' in the DOS prompt.
8. To exit the DOS window completely, type 'exit'
9. Restart the system to activate the new software.

C) ISDN Upgrade

The TANDBERG MXP systems has the possibility to be upgraded remotely from another TANDBERG MXP system using ISDN. Please note that both systems must be on software version F3.0 or newer for this functionality.

Please also note that both systems must be on software version F3.0 or newer for this functionality

1. Connect to the system that shall be upgraded using ISDN
2. Copy the new software file to a folder on your computer, for instance c:\software.
3. Type the IP address of the TANDBERG MXP system that the software upgrade is going to be done from (for instance 10.0.8.77) in a standard browser, such as Internet Explorer 6.0. The web interface of the codec will then be displayed.
4. Select the 'System Configuration' tab on top of the page, and then the sub-tab 'Far end upgrade'.

The following page will now be displayed:

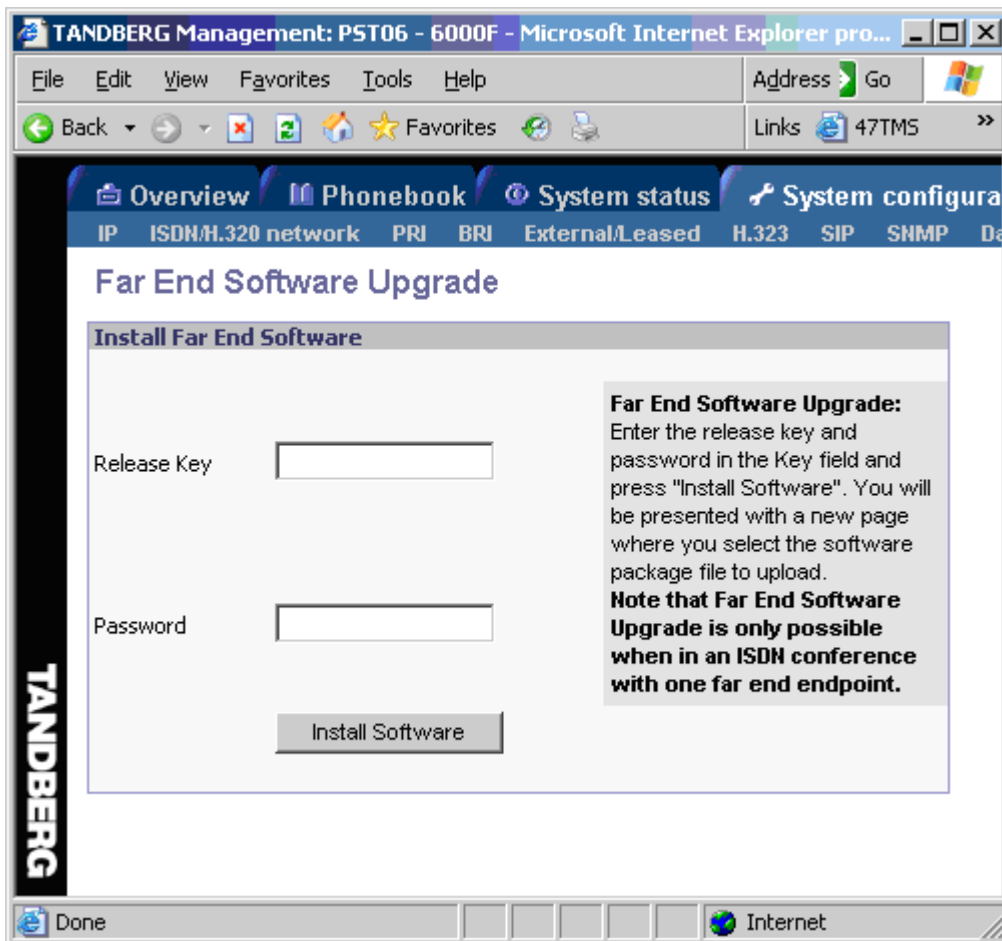


Figure 6-5.

5. Enter the release key for the system to be upgraded in the 'Release Key' field. If no release key is given, the Far End System will use the previously stored release key if possible. This will work when upgrading from a main release to a dot release.
- 6 Make sure the setting "Far End System Upgrade" is set to "On" at the remote site. This setting can be found in the Administrator Settings/General/Permissions menu.
7. Enter the password set at the far end for remote upgrade (default password is "TANDBERG")
8. Press 'Install Software'. The system will now use about 90% of the call capacity to transfer the software file across. During this time, audio and video will be turned off.
9. Once the software has been transferred and verified at the far end, you will get a new webpage with information that the upgrade of the far end was successful. At the same time, a message box will appear at the remote system asking if you want to reboot the system to activate the new software.
10. To activate the new software. The ISDN connection needs to be closed, and the TANDBERG MXP system must be rebooted.

TANDBERG COMPASS MXP / UTILITY MXP

In the menu on the system under 'Control Panel/System Information', the installed software should now be displayed as the 'Software Version'.

Appendix 13

Declaration of Conformity

Contact your TANDBERG representative for a Declaration of Conformity.

7 Glossary

#

199 AV1: External input for the TANDBERG/LOEWE monitor.

2nd monitor: The second monitor of your videoconferencing system. The second monitor is normally placed on the right side of the first monitor.

4CIF: 4 times CIF, 704x576 pixels

4SIF: 4 times SIF, 704x480 pixels

A

AACLD: Advanced Audio Coding Low Delay

Access code: Use Access code to password protect outgoing calls.

Accessories box: The cabinet contains the following: W.A.V.E. camera, table microphone, remote control and tracker and documentation.

Accessories drawer: See Accessories box

AES: Strong encryption. (Advanced Encryption Standard)

AGC: Automatic Gain Control. Maintains the audio signal level at a fixed value by attenuating strong signals and amplifying weak signals. Very weak signals, i.e. noise alone, will not be amplified.

Alert speaker: The internal speaker will warn you of an incoming call even though the monitor may not be switched on.

Audio call: Audio call equals a telephone call. You can make a call with the video system with audio only.

Audio input 4: Intended for connection to an external microphone amplifier or an external fixed mixer.

Audio input 5: Intended for connection to external playback devices (or to telephone add-on hybrids).

Audio input 6: Intended for connection to a VCR or DVD player or other external playback devices.

Audio out 1: Intended for connection to TANDBERG Natural Audio, televisions or audio amplifiers.

Audio out 2: Intended for connection to audio recording equipment (or to a telephone add-on hybrid).

Audio out 3: Intended for connection to a VCR or other recording equipment.

Auto-display snapshot: Sent and received snapshot will automatically appear on full screen display.

Auto answer: The system will automatically answer all incoming calls.

Automatic Duo Video: Duo Video Mode is put to Auto. When starting a presentation, Duo Video will start automatically (if possible).

B

Bandwidth: Decides the quality of the video call. High bandwidth gives high quality.

C

Call Control Data Triggered: Uses TxData, RxData and clock signals only. Use Data Triggered when no handshake signal is available.

Call control Leased Line: Is a non-dialing protocol and should be used when two systems are connected in a point-to-point connection. Use Leased Line when the handshaking signals DTR and CD are available.

Call control Manual: Should be used when no handshake signals are available, and the external equipment requires a constantly connected line.

Call control RS366 Dialing: The only dialing protocol and would normally be used together with network clocking RS449/V35 Compatible when the external system uses RS2366 ports.

Call status: Comprehensive information about the call listing transmitted and received audio/video/data information.

Camera tracking: Voice Activated Camera Positioning - the camera will automatically view the current speaker.

Camera tracking mode: Voice Activated Camera Positioning - the camera will automatically view the current speaker.

Chair control: Enables one participant to control the meeting by selecting which of the conference participants that is to be broadcasted to the other participants.

Channel status: Comprehensive information about the call progress listing the numbers called, and if an error occurs a cause code is displayed.

CIF: Common Intermediate Format, 352x288 pixels

Closed Captioning: Text chat.

Codec: The Codec is the heart of the system. The main task for the Codec is the compression of outgoing video, audio and data, the transmission of this information to the far end, and the decompression of the incoming information.

Continuous Presence: See Split Screen

Control Panel: The Control Panel is found in the main menu.

CSU: Channel Service Unit

D

Daisy-chaining: Use of several cameras in a video conference.

Dataport: The system provides two standard RS 232 data ports to allow a computer to be connected for data transfer and control purposes.

Dataport 1: A standard RS 232 data port to allow a computer to be connected for data transfer and control purposes.

Dataport 2: Dedicated to the main camera and will not be available in standard configuration.

DES: Encryption. (Data Encryption Standard)

DHCP: Dynamic Host Configuration Protocol.

Diagnostics: Allows testing of individual system components and displays the current system settings.

Digital ClarityTF: Participants enjoy presentations of exceptionally high quality resolution video.

Disconnect site: As a Chairman, you get the option Disconnect site. Disconnect site allows you to disconnect any participant in the conference.

Do Not Disturb: When Do Not Disturb is active the system will not accept any incoming calls. The caller will hear a busy tone when calling the unit.

Document Camera: A document camera is an additional camera that is used for showing text, diagrams as well as physical objects.

DownspeedingTF: If channels are dropped during a videoconferencing session, the connection is automatically maintained without interruption.

dual monitor: The second monitor

Dual monitor system: A videoconference system with two monitors.

Duo VideoTF: Allows participants at the far end to simultaneously watch a presenter on one screen and a live presentation on the adjoining screen.

E

E.164 Alias: The E.164 address of the system. Equivalent to a telephone number, sometimes combined with access codes. The system will not register with the gatekeeper if the E164 alias is not set.

E1: Network type, 30 channels. Default for PAL versions.

Echo canceller: Continuously adjusts itself to the audio characteristics of the room and compensates for any changes it detects in the audio environment.

Echo control: When set to On the far end is prevented to hear their own audio.

Encryption: Use encryption to make a secure call. The system will try to make point-to-point calls using encryption. If the far end system supports encryption, the call will be encrypted. If not, the call will proceed without encryption. (Auto encryption). Set encryption to On if you don't want an unencrypted call to be established at all. Set encryption to Off if you don't want to use encryption.

End view: Stop viewing the site previously chosen with View Site, and return the view to the site that is currently On Air. Can be used by all conference participants.

Ethernet Speed: The speed (Mbps) on the connection from the system to the LAN.

F

Fallback to telephony: Enables fallback from video calls to telephony/speech calls.

Far End: In a video conference, Far End means the remote side of the conference. Far End Camera is your conference partner's camera. Opposite to Near End

FECC: Far End Camera Control. When activated it is possible to control the far end's camera, select video sources, activate presets and request still images.

Floor: In a multipoint call, use Request Floor to broadcast your picture to all other participants. This is handy when you are having presentations, for teachers etc.

G

G.711: Audio algorithm for normal quality audio (telephone quality, 3.1 kHz) The system will always have G.711 enabled.

G.722: Audio algorithm for high quality audio (7 kHz).

G.722.1: Audio algorithm for compressed high quality audio (7 kHz)

G.728: Audio algorithm for compressed normal quality audio (telephone quality, 3.1 kHz)

Gateway: The gateway enables sites on IP and sites on ISDN to participate in meetings with each other.

Global Phone Book: A phone book provided by TMS.

H

H.261: Video algorithm for legacy video compression and decompression. The system will always transmit H.261

H.263: Video algorithm for normal video compression and decompression

H.264: Video algorithm for bandwidth-efficient video compression and decompression

Hardware serial number: A unique number (listed in the System Information menu) to identify your system towards your TANDBERG representatives.

Humfilter: A highpass filter which reduces very low frequency noise.

I

iCIF: Interlaced CIF, 352x288 pixels, 50 fields per second

Incoming call: Someone calls in to your system

Incoming MCU Calls: If occupied in a call, the system will provide a visual/audio indication of an incoming call and ask to accept or reject the call.

IP address: Defines the network address of the system. This address is only used in static mode.

IP assignment: IP-address, IP-subnet mask and Gateway are assigned by the DHCP server.

IP assignment Static: The system's IP-address and IP-subnet mask must be specified in the IP-address field.

IP Precedence: Used to define which priority the system should have in the network. Higher numbers indicate higher priority.

IP subnet mask: Defines the type of network. This address is only used in static mode.

IP TOS: IP Type Of Service. Helps a router select a router path when multiple paths are available.

iSIF: Interlaced SIF, 352x240 pixels, 60 fields per second

L

Layout: Use the Layout key to change picture layout on the screen.

M

Main Camera: Your camera. Video input 1

Max call length: This feature will automatically end both incoming and outgoing calls when the call time exceeds the length specified.

Max channels: Indicates the maximum number of channels the system is allowed to use on the E1/T1 interface.

MCU: Multipoint Conference Unit.

MCU status line: Shows indicators for MultiSite, MCU and DuoVideo

MicOff: Microphone is switched off.

Mix mode: How to adjust the weighting of each microphone to obtain the best possible audio and minimize the background noise.

Modem mode: (Dataport) Supports external control of the system via a PC as in Control Mode. Once a call is established, Dataport 1 will automatically switch to Data mode. When the call disconnects, Dataport 1 switches back to Control Mode.

MSN: Multiple Subscriber Number. Possible to attach different ISDN terminals, with different numbers, to the same physical ISDN telephone line. The service can be ordered from the telephone company.

multipoint call: A call with more than two participants including yourself

MultiSite: The TANDBERG systems internal MCU. Built-in system which makes it possible to establish meetings with up to 6 video calls and 5 telephone calls. The MultiSite option is not available on all systems.

MultiSite cascading: By connecting up to 4 or 6 (depending on the system capacity) MultiSite systems together to achieve a higher number of participants in a multipoint call.

N

NAT: Network Address Translation. NAT support in the videoconferencing system enables proper exchange of audio/video data when connected to an external videoconferencing system when the IP traffic goes through a NAT router. Used in small LANs, often home offices, when a PC and a videoconferencing system is connected to a router with NAT support.

NAT Address: The external/global IP-address to the router with NAT support. Packets sent to the router will then be routed to the system's IP address.

Natural Audio Module™: Designed to improve audio quality during a videoconference. It is mounted in the cabinet above the Codec and consists of an audio system optimized for speech.

Natural Presenter Package: Consists of Duo Video, Digital Clarity and PC Presenter.

Natural Video™: 60 fields per second true interlaced picture.

Near End: In a video conference, Near End means your own side of the conference. Near Camera is your own camera. Opposite to Far End

Network clocking: Specifies the number of physical external clock signals.

Network Interface: Indicates if the network is of type E1 or T1.

Network profiles: It is possible to define up to 6 network profiles, each consisting of name and call prefix, and 3 of them also include network selection.

Non Standard Facility: The network provider may require service selection in your ISDN configuration. Valid NSF codes are from 1 to 31. 0 will disable NSF service codes.

NR: Noise Reduction. Reduces constant background noise (e.g. noise from air-conditioning systems, cooling fans, etc.).

NSF: Non Standard Facility.

NTSC: National Television System Committee. Video standard corresponding to 4SIF. Primary used in USA, Japan and other countries.

O

Option Key: Required by the system to activate optional features such as MultiSite and Presenter.

P

PAL: Phase Alternation by Line. Video standard corresponding to 4CIF. Primary used in Europe, Middle East and Asia

Parallel dial: Channels will be dialed and connected in parallel when setting up a bonding call.

PC PresenterTF: An easily accessible PC connection plug. When connected the PC image is displayed on the monitor.

PC SoftPresenterTF: Shows PC images via the LAN connection.

PIP: Picture-In-Picture

point-to-point call: A call with two participants including your self

POP: Picture Outside Picture. POP is a picture layout mode that is optimized for wide screens: Full screen, 1+3 layout and emulated dual monitor layout.

Presentation: Presentation means to show another video source. Use the Presentation Key for a predefined presentation source. Use the presentation menu to choose among all available video sources.

Presentation source: The video source that is on display when you press the Presentation Key on the remote control

Presets: Predefined camera positions (and video sources)

Q

QCIF: Quarter CIF, 176x144 pixels

QSIF: Quarter SIF, 176x120 pixels

R

Release Floor: To end the request floor function.

release floor to site: Allows the chairman to release the floor.

Remote: Short for Remote Control

Request Floor: The MCU will broadcast the video in full screen to all other participants in the conference. If the MCU conference has a chairman, a request will be sent to the the chairman.

Restart: Restarts the system.

Restore defaults: Restores system settings to the factory defaults.

Restricted call: A call to a 56 kbps network. By default the system will dial an unrestricted call (a call to a 64 kbps network) and downspeed to 56 kbps if necessary.

S

S-VHS: S-video

S-video: The standard camera uses one of the S-video inputs in the codec.

Selfview: Outgoing video. In most cases, the image of your self.

Serial number: A unique number (the hardware serial number, listed in the System Information menu) to identify your system towards your TANDBERG representatives.

Side-by-Side: Side-by-side view means that two pictures are displayed side by side each other on the screen. You will see two equally sized pictures.

SIF: Standard Input Format, 352x240 pixels

SNMP: Simple Network Management Protocol.

SNMP Community: SNMP Community names are used to authenticate SNMP requests. SNMP requests must have a password in order to receive a response from the SNMP agent in the system. The SNMP Community name is case sensitive.

SNMP Trap Host: Identifies the IP-address of the SNMP manager.

SNMP traps: Generated by the agent to inform the manager about important events.

SoftMux: Ensures high reliability and includes the unique Downspeeding feature. It also makes it possible to dial to another videoconferencing equipment, phones and mobile phones in a uniform way, and provides an on-screen, real-time feedback on the progress of a call.

Split Screen: All the participants in a MultiSite conference are displayed on the screen. (Former Continuous Presence)

Start Channel: Indicates the first E1/T1 channel the system is allowed to use. The setting might be used when if the E1/T1 line is shared with other equipment.

Start up video source: The video source that is on display when the system wakes up from standby mode.

Status Format: Provides call quality feedback on the status line.

Streaming: Allows broadcasting of audio/video via an IP network.

Streaming Address: Defined as the IP-address of a streaming client, streaming server or a multicast address.

Streaming Address Port: If several codecs are streaming to the same IP-address, different ports have to be used in order for the client to know which stream to receive.

Streaming Allow remote Start: Streaming can be started from the Videoconferencing system using the remote control, by using the Data port, or from external user interfaces like the Web-browser or Telnet session.

Streaming Announcements: The system will announce to the network that it is streaming. This enables a streaming client (e.g. a PC) to connect to the system's streaming session. Used by Cisco IP/TV.

Streaming Password: Prevents unauthorized access to the streaming functionality.

Streaming Source: Select between local video and/or far end video to be streamed. Local and far end audio is always streamed.

Streaming TTL/Router Hops: Used for streaming data to limit how many routers the data should pass before it is rejected.

Streaming Video Rate: Defines the Video streaming rate from the system.

SVGA: Super VGA. (800x600)

SXGA: Super extended Graphics Array (1280x1024)

System information: Lists system numbers, line status, software version and other useful information.

System name: Identifies a videoconferencing system

T

T1: Network type, 24 channels. Default for NTSC versions.

T1 Line Coding: Indicates how the signals on the line should be coded. If parts of the systems use restricted coding, this should be selected.

Take chair: Request chairmanship of the conference. If no one else is chairman, the request is granted.

TCS-4: Used to address different systems on a LAN when dialing in via a gateway.

Terminal Names: Lists the site numbers or name (if supported) of other sites connected in the conference.

Terminate meeting: The chairman can terminate the conference, i.e. all participants are disconnected.

TMS: TANDBERG Management Suite

Touch Tones: To dial extension numbers etc. during a call, use touch tones in order to get tones instead of preset on the number keys.

Tracker: The tracker is a small infrared remote control device made to steer the camera to any desired location within the room.

TSC-1: TCS-1 is used for H243 password on H320 MCU's

V

VCR: Video Cassette Recorder

VGA: Video Graphics Array. (640 x 480)

VGA Out Quality: Changes the resolution of the VGA signal available in the VGA Out connector at the rear of the codec.

View administrator settings: Displays all the system settings in a read only format.

View site: View any participant in the conference other than the participant currently On Air. Can be used by all conference participants.

VNC: Virtual Network Computing.

Voice Switched: The active site will be displayed in full screen during a MultiSite conference.

W

WAVE II Camera: Wide Angle View Camera - delivers the widest angle of view in the industry.

Welcome menu: The welcome menu displays the main menu when you are outside a call.

X

XGA: extended Graphics Array (1024 x 768)

Free Manuals Download Website

<http://myh66.com>

<http://usermanuals.us>

<http://www.somanuals.com>

<http://www.4manuals.cc>

<http://www.manual-lib.com>

<http://www.404manual.com>

<http://www.luxmanual.com>

<http://aubethermostatmanual.com>

Golf course search by state

<http://golfingnear.com>

Email search by domain

<http://emailbydomain.com>

Auto manuals search

<http://auto.somanuals.com>

TV manuals search

<http://tv.somanuals.com>