

Tanaka

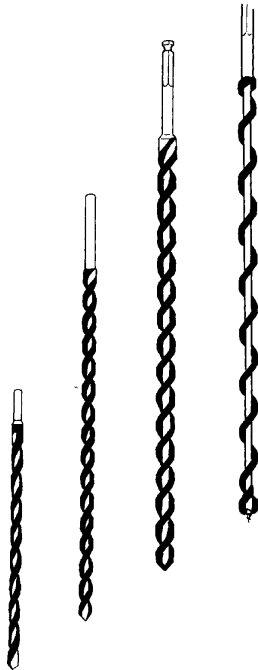
Parts Catalog

Engine Drill

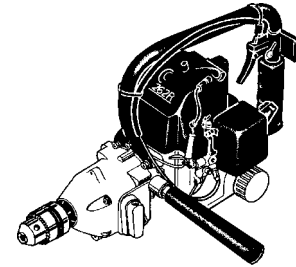
Model: TED-232

Units Prior To Serial No. K 164845

CARBIDE TIP DRILL BITS



- **Long Lasting and Dependable**
Can be resharpened or completely rebuilt if necessary.
- **High Quality Carbide Compound**
For superior strength and durability.
- **Rapid Chip Evacuation**
Special fluting provides a large chip storage area and prevents clogging.
- **Carbide Tipped**
Will outlast and outperform normal wood-boring bits.



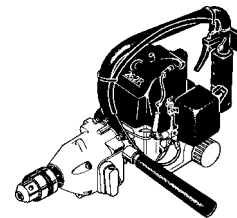
** Ideal for use in
Tanaka Drills*

Drill Bit Description	Diameter	Length	Part #
Pole For treated wood used on poles, fencing, and beams.	9/16"	12"	745102
	11/16"	16"	745103
	13/16"	22"	745104
Wood For treated wood containing nails, staples, or other metal materials.	9/16"	12"	745105
	11/16"	16"	745106
	13/16"	22"	745107
Railroad For general purpose wood boring for landscaping.	9/16"	12"	745108
	3/4"	12"	745109
	5/8"	18"	745110
Masonry For concrete, brick, stucco, and other stone materials.	1/4"	12"	745111
	3/8"	12"	745112
	1/2"	12"	745113

BULB / PLANT AUGER BITS



- **Speeds up Planting by 500 Percent**
- **Can be Used for Many Purposes.**
- **Leave Dirt in a Loose, Easy to Pack Condition.**
- **Drill Holes in all Types of Soil.**



** Ideal for use in
Tanaka Drills*

Item No.	Diameter	Length
745201	3"	7"
745202	3"	12"
745203	3"	24"

All data and specifications are subject to change without notice.

REF. NBR	PART NBR	PART NAME	QTY	SERIAL NBR	REMARKS
1-001	072-00730-900	CRANK CASE ASS'Y	1		
1-002	999-61800-100	BALL BEARING #6001, 28MM/OD	2		
1-003	999-66122-266	OIL SEAL 12227	2		
1-004,1	738-0062V-201	MUFFLER PROTECTOR	1	-B226783	
1-004,2	738-00763-200	MUFFLER PROTECTOR	1	N -C151400	
1-004,3	738-0072V-200	MUFFLER PROTECTOR	1	N -E120423	
1-004,3	738-0072V-200	MUFFLER PROTECTOR	1	R -E120423	
1-004	738-0072V-210	MUFFLER PROTECTOR	1	R -F187720	
1-004	738-0072V-211	MUFFLER PROTECTOR	1	F187721-	
1-005	046-00700-803	CRANK SHAFT COMP.	1		
1-006	090-00601-205	CRANK CASE GASKET	1	I -K163845	
1-006	090-00601-208	CRANK CASE GASKET	1	K163846-	
1-007	088-10100-200	WOOD-RUFF KEY 3X13X4.5	1		
1-008	070-00601-201	CRANK SHAFT WASHER 12.2X18	2		
1-009	999-62081-225	NEEDLE BEARING F-810	1		
1-010	031-00601-202	PISTON	1		
1-011	037-00601-200	PISTON PIN	1		
1-012	039-00601-200	PISTON PIN CIRCLIP	2		
1-013	041-00601-200	PISTON RING	1		
1-014	040-00601-200	PISTON RING/TOP	1		
1-015	017-00601-203	CYLINDER GASKET	1		
1-016	002-0062T-800	CYLINDER COMP.	1		
1-017	018-00502-200	SPARK PLUG BM6A	1	-F172000	
1-017	018-01805-200	SPARK PLUG CJ8	1	P F172001-	
1-018,1	159-21406-870	IGNITER TTI-1E	1	R -C059929	
1-018,1	159-21401-871	IGNITOR COMP. TTI-1E	1	-E059970	
1-018	159-21401-872	IGNITOR COMP. TTI-1F	1	N -F187720	
1-018	159-21401-872	IGNITOR COMP. TTI-1F	1	D F187721-	
1-019,1	133-00741-200	HEAT SHIELD	1	-C151400	
1-019	737-00741-200	MUFFLER GASKET	1	N C151401-	
1-020	330-00200-210	GEAR SHAFT SHIM 0.10	V		
1-020	330-00200-220	GEAR SHAFT SHIM 0.15	V		
1-020	330-00200-230	GEAR SHAFT SHIM 0.20	V		
1-020	330-00200-240	GEAR SHAFT SHIM 0.30	V		
1-021	173-0162R-800	IGNITOR LEAD WIRE COMP., R85M	1	D F187721-	
1-022,1	155-20712-900	MAGNETO ROTOR ASS'Y	1	-C151400	
1-022	155-21700-900	MAGNETO ROTOR ASS'Y	1	N C151401-	
1-023,1	167-20763-800	IGNITION COIL COMP.	1	-F187720	
1-023	167-21852-800	IGNITION COIL COMP.	1	N -H118649	
1-023	167-21852-800	IGNITION COIL COMP.	1	R -H118649	
1-023	167-21952-800	IGNITION COIL COMP.	1	H118650-	
1-024	790-00601-203	STARTER PAWL SPRING	2		
1-025	786-00601-200	STARTER PAWL WASHER	2		
1-026	788-00601-203	STARTER PAWL	2		
1-027	822-00601-200	STARTER PAWL SHIM 0.6T	2		
1-028	793-10200-201	STEP BOLT	2	I -J132330	
1-028	793-10200-202	STEP BOLT	2	J132331-	
1-029	085-00000-200	FLYWHEEL WASHER	2		
1-030	066-00601-200	FLYWHEEL NUT	1		
1-031	112-00700-201	FAN CASE	1	-C151400	
1-031	112-00750-201	FAN CASE	1	N C151401-	
1-032	016-00801-800	CYLINDER SHROUD COMP.	1	-C151400	
1-032	102-01300-200	INSULATOR	1	N C151401-	
1-033	203-10000-200	PRIMARY CORD GRONNET	1	-C151400	
1-033	203-0604A-202	GRONNET	1	P C151401-	
1-034	132-00601-201	FLASH PAN	1	M	
1-034	132-0062V-201	FLASH PAN	1	D C151401-	
1-035	751-0062V-200	MUFFLER S. GASKET	2		
1-036	333-00802-200	CLUTCH CASE FIXING BASE	1	R -C151400	
1-036	333-00802-202	CLUTCH CASE FIXING BASE	1	C151401-	
1-037	347-00501-205	CLUTCH FLANGE	1		
1-038	066-00000-200	FLYWHEEL NUT 12	1		
1-039	359-02103-200	CLUTCH WASHER B	2		

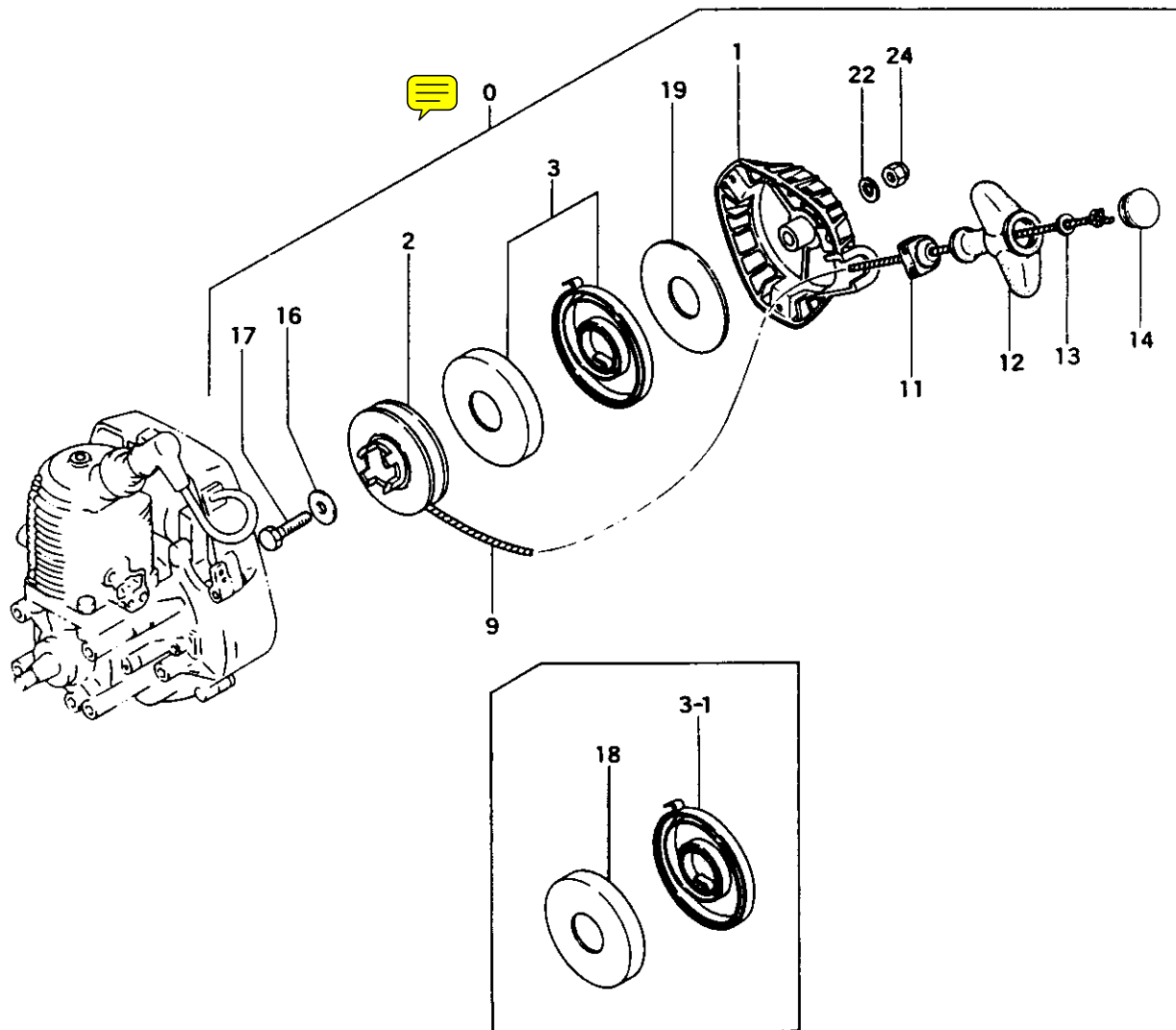
- To be cont'd -

REF. NBR	PART NBR	PART NAME	QTY	SERIAL NBR	REMARKS
1-040	290-00501-802	CLUTCH SHOE COMP.	2		
1-041	358-02103-200	WASHER	2		
1-042	357-00801-200	STEP BOLT	2		
1-043	342-00501-204	CLUTCH SPRING	1		
1-044	591-00801-200	TANK	1	R -B226783	
1-044	591-00783-200	TANK	1	B226784-	
1-045	595-0062A-910	TANK CAP ASS'Y. ORANGE	1	M	
1-045	595-0062A-901	TANK CAP ASS'Y	1		
1-052	675-04001-900	PUMP FILTER BODY ASS'Y	1	R -H118649	
1-052	675-0608A-900	PUMP FILTER BODY ASS'Y	1	H118650-	
1-059	680-04019-210	CLIP 7	1		
1-060	678-00601-201	RUBBER PIPE	1		
1-061	500-33202-205	RUBBER PIPE CAP	1		
1-062	700-03005-190	FUEL PIPE 3X5X190	1		
1-063	659-00801-200	COLLAR	3		
1-064, 1	705-00783-901	MUFFLER ASS'Y	1	-B226783	
1-064, 1	705-00783-910	MUFFLER ASS'Y	1	M -C151400	
1-064, 1	705-00783-920	MUFFLER ASS'Y FOR USA	1	N -D048090	
1-064, 1	705-00783-920	MUFFLER ASS'Y FOR USA	1	R -D048090	
1-064	705-00783-921	MUFFLER ASS'Y FOR USA	1	D048091-	
1-065, 1	157-04000-900	SPARK PLUG CAP ASS'Y	1	-F172000	
1-065	157-01570-900	SPARK PLUG CAP ASS'Y	1	P F172001-	
1-066, 1	255-0062A-200	SPARK PLUG RUBBER COVER	1	-D300221	
1-066, 1	255-0062A-201	SPARK PLUG RUBBER COVER	1	P -E024900	
1-066, 1	255-0062A-201	SPARK PLUG RUBBER COVER	1	R -E024900	
1-066	255-0608A-200	SPARK PLUG RUBBER COVER	1	E024901-	
1-067	990-11050-601	SCREW 5X60	2		
1-068	992-10050-012	S.WASHER 5	2		
1-069	992-01050-011	WASHER 5	2		
1-070	403-00601-202	INLET MANIFOLD GASKET	2		
1-071, 1	404-0142A-801	CARBURETOR INSULATOR COMP.	1	-G196737	
1-071	404-0142A-200	CARBURETOR INSULATOR	1	N G196738-	
1-072	402-00601-202	CARBURETOR GASKET	2		
1-074	436-0062V-251	AIR CLEANER BASE	1		
1-075	894-01401-201	OUTER RECEIVER	1		
1-077, 1	273-00601-900	STOP BUTTON ASS'Y	1	-D074939	
1-077	170-00601-810	STOP BUTTON COMP.	1	N -F187720	
1-077	170-00601-810	STOP BUTTON COMP.	1	I -F187720	
1-077	170-00763-800	STOP BUTTON COMP.	1	F187721-	
1-078	885-0062V-910	THROTTLE WIRE ASS'Y	1		
1-079	599-00601-200	GROMMET	1		
1-080	252-04000-200	SPARK PLUG CAP SPRING	1	M	
1-081	132-0062V-201	FLASH PAN	1		
1-082	228-0062V-201	METAL	1		
1-083	990-11040-061	SCREW 4X6	1		
1-084	688-11501-200	RETURN SPRING	1		
1-085	990-11050-141	SCREW 5X14	1	N C151401-	
1-086	992-10050-012	S.WASHER 5	1	N C151401-	
1-087	992-01050-011	WASHER 5	1	N C151401-	
1-088	990-11040-121	SCREW 4X12	1	N C151401-	
1-089	992-10040-012	S.WASHER 4	1	N C151401-	
1-090	992-01040-011	WASHER 4	1	N C151401-	
1-091	990-11040-121	SCREW 4X12	1	N C151401-	
1-092, 1	990-11040-181	SCREW 4X18	2	-E059970	
1-092	990-11040-081	SCREW 4X8	1	N E059971-	
1-092	990-11040-081	SCREW 4X8	1	D F187721-	
1-093	990-11040-181	SCREW 4X18	4		
1-094, 1	994-16040-181	SCREW 4X18/WS	2	-F187720	
1-094	994-16040-226	SCREW 4X22/WS	2	N F187721-	
1-095, 1	992-10040-012	S.WASHER 4	2	-E059970	
1-095	992-10040-012	S.WASHER 4	1	N E059971-	
1-095	992-10040-012	S.WASHER 4	1	D F187721-	
1-097	990-11050-161	SCREW 5X16	4		

- To be cont'd -

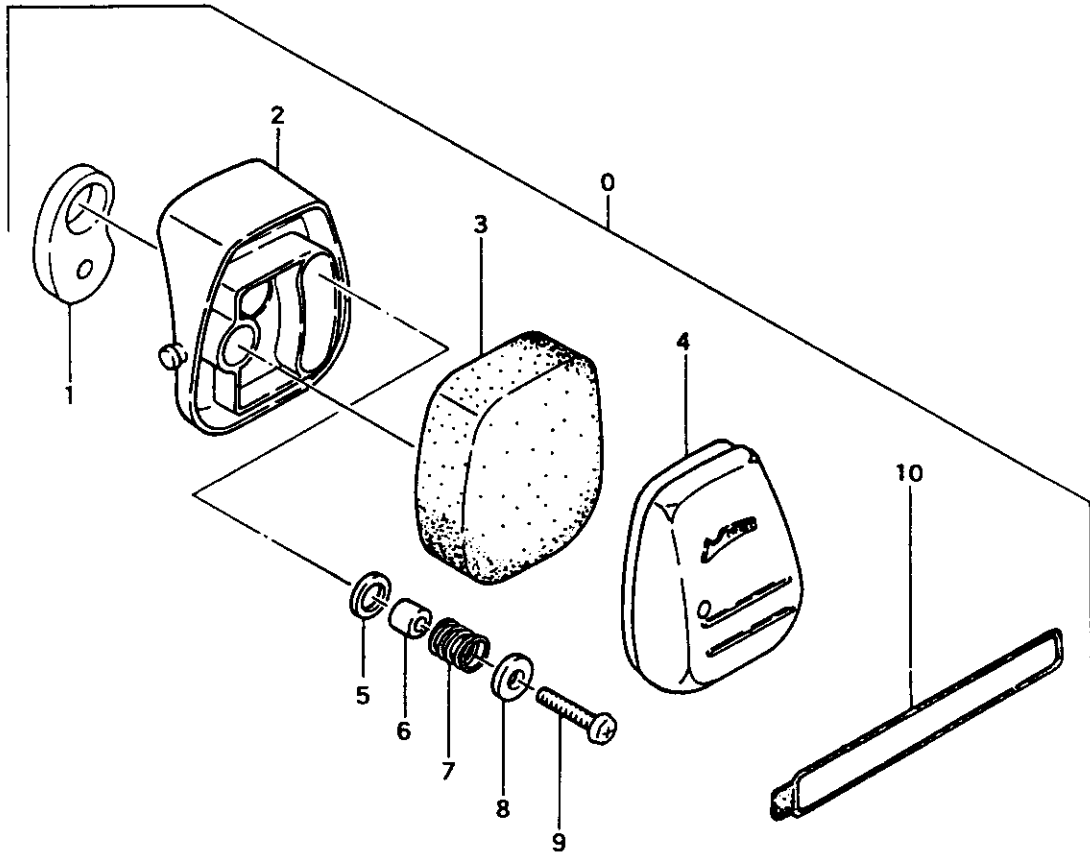
REF. NBR	PART NBR	PART NAME	QTY	SERIAL NBR	REMARKS
1-098	992-10050-012	S.WASHER 5	4		
1-099	990-11050-181	SCREW 5X16	4		
1-100	990-11050-251	SCREW 5X25	4		
1-101.1	990-11050-241	SCREW 5X24	2	-G196737	
1-101	990-11050-222	SCREW 5X22	2	N G196738-	
1-102.1	992-10050-012	S.WASHER 5	2	-G196737	
1-102	992-10050-042	S.WASHER 5	2	N G196738-	
1-103	992-10040-012	S.WASHER 4	1	N C151401-	
1-104	992-01040-011	WASHER 4	1	N C151401-	
1-105	990-11050-181	SCREW 5X16	3		
1-106	992-01050-011	WASHER 5	3		
1-107	992-10070-012	S.WASHER 7	1		
1-108	991-01060-013	MUT 6	1		
1-109	990-11040-101	SCREW 4X10	3		
1-110	992-10040-012	S.WASHER 4	3		
1-111	992-00050-041	WASHER 5	2	N G196738-	
1-113.1	717-00763-800	MUFFLER BODY B COMP.	1	-B226783	
1-113	717-00763-801	MUFFLER BODY B COMP.	1	N -C151400	
1-113	717-00763-801	MUFFLER BODY B COMP.	1	R -D048090	
1-113	717-00763-802	MUFFLER BODY B COMP.	1	D048091-	
1-114	740-0062W-200	MUFFLER COLLAR	2		
1-115.1	722-00763-800	MUFFLER PARTITIVE PLATE	1	-C151400	
1-115	722-00741-801	MUFFLER PLATE COMP.	1	N C151401-	
1-116	723-0062W-200	ASBESTOS THREAD	1		
1-117	737-00531-201	MUFFLER GASKET	2	-C151400	
1-117	737-00531-201	MUFFLER GASKET	1	C151401-	
1-118	992-10040-012	S.WASHER 4	4		
1-119	992-10050-012	S.WASHER 5	4		
1-120	992-10050-012	S.WASHER 5	4		
1-122	198-11800-800	CORD CLAMP COMP.	1	D F187721-	
1-124	751-0062W-200	MUFFLER S. GASKET	1	D C151401-	
1-125	990-11040-101	SCREW 4X10	1	D C151401-	
1-126	992-10040-012	S.WASHER 4	1	D C151401-	
1-127	992-01040-011	WASHER 4	1	D C151401-	
1-128	990-11040-101	SCREW 4X10	2	D C151401-	
1-129	992-01040-011	WASHER 4	2	D C151401-	
1-130	016-00601-800	CYLINDER SHROUD COMP.	1	D C151401-	
1-131	992-01050-011	WASHER 5	1	D C151401-	
1-132	990-11050-101	SCREW 5X10	1	D C151401-	
1-133	992-01040-011	WASHER 4	1	D C151401-	
1-134	990-11040-081	SCREW 4X8	1	D C151401-	

FIG.2 RECOIL STARTER



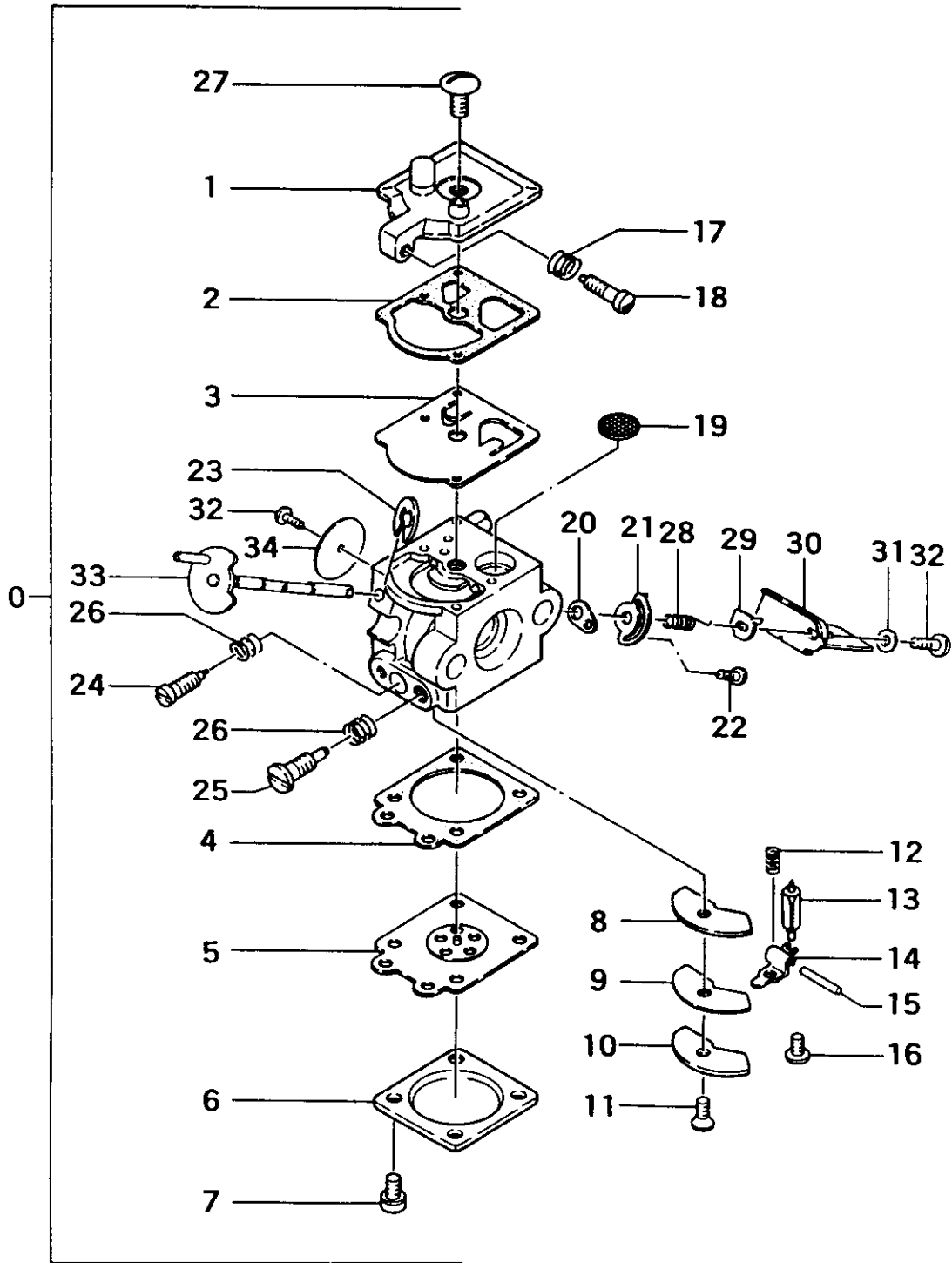
REF. NBR	PART NBR	PART NAME	QTY	SERIAL NBR	REMARKS
2-000	756-00601-920	RECOIL STARTER ASS'Y	1		
2-001	772-00601-821	RECOIL STARTER BODY COMP.	1		
2-002	774-00601-806	STARTER ROPE REEL COMP.	1		
2-003, 1	779-00601-204	RECOIL SPRING	1	-E261275	
2-003	778-00600-900	RECOIL SPRING CASE ASS'Y	1	N E261276-	
2-009	783-00601-210	ROPE	1		
2-011	780-00601-201	ROPE GUIDE	1		
2-012	785-10207-201	STARTER HANDLE	1		
2-013	992-01040-011	WASHER 4	1		
2-014	833-10207-200	STARTER HANDLE CAP	1		
2-016	992-08050-006	SPECIAL WASHER 5	1		
2-017	990-21050-251	BOLT 5X25	1		
2-018	778-0141Y-202	RECOIL SPRING CASE	1	D E261276-	
2-019	778-00601-201	RECOIL SPRING CASE COVER	1		
2-022	992-20050-000	INNER TOOTHED WASHER 5	1		
2-024	991-43050-026	CAP NUT 5	1		

FIG.3 AIR CLEANER



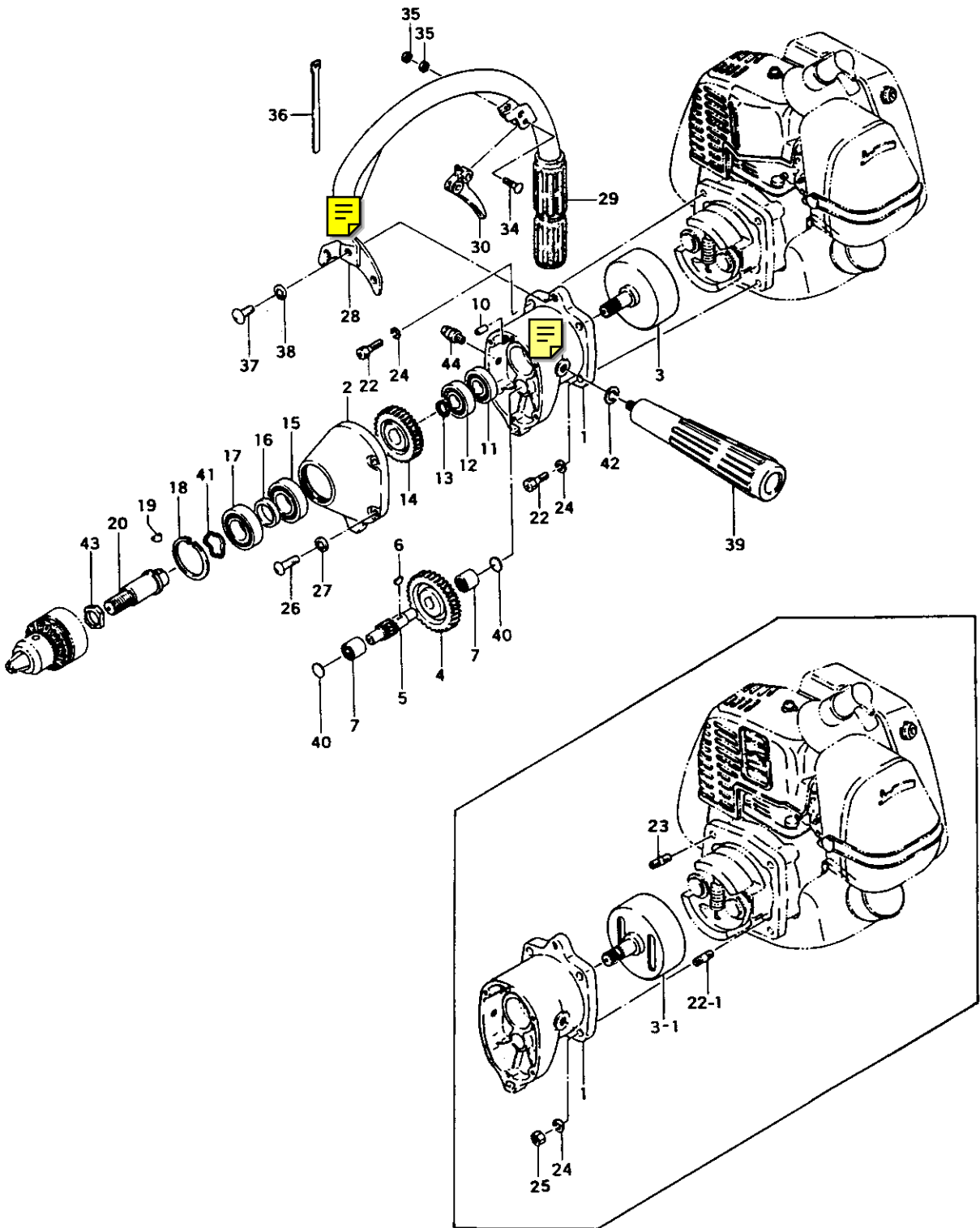
REF. NBR	PART NBR	PART NAME	QTY	SERIAL NBR	REMARKS
3-000	410-0062A-001	AIR CLEANER ASS'Y	1		
3-001	431-00601-201	CLEANER GASKET	1		
3-002	423-00601-203	AIR CLEANER BODY	1		
3-003	444-00601-201	CLEANER ELEMENT A	1		
3-004	424-00601-202	CLEANER COVER	1		
3-005	182-00601-200	SPECIAL WASHER/CLEANER	2		
3-006	454-00601-202	CLEANER FIXING METAL	2		
3-007	432-00601-200	CLEANER SPRING	2		
3-008	992-01050-011	WASHER 5	2		
3-009	990-11050-551	SCREW 5X55	2		
3-010	466-0062A-200	CLEANER BAND	1		

FIG.4 CARBURETOR



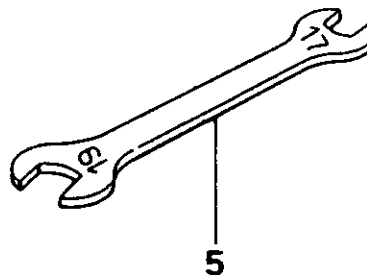
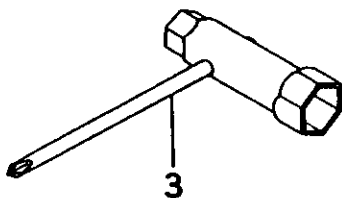
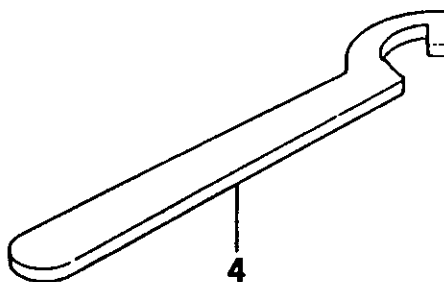
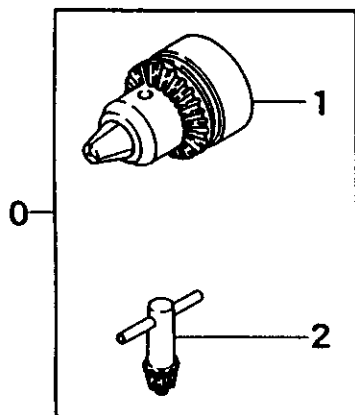
REF. NBR	PART NBR	PART NAME	QTY	SERIAL NBR	REMARKS
4-000	455-25004-902	CARBURETOR ASS'Y	1	R -D048090	
4-000	455-25022-901	CARBURETOR ASS'Y WA-12C	1	D048091-	
4-001	575-25001-200	PUMP BODY	1		
4-002	577-25001-200	PUMP GASKET	1		
4-003	576-25001-200	PUMP DIAPHRAGM	1		
4-004	475-25001-200	DIAPHRAGM GASKET	1		
4-005	474-25001-800	METERING DIAPHRAGM COMP.	1		
4-006	476-25006-200	DIAPHRAGM COVER	1	M	
4-006	478-25004-200	DIAPHRAGM COVER	1		
4-007	548-25014-201	SET SCREW	4	M	
4-007	548-25012-200	SET SCREW	4		
4-008	522-25001-200	CIRCUIT PLATE GASKET	1		
4-009	521-25001-200	CIRCUIT CHECK VALVE DIAPHRAGM	1		
4-010	523-25001-200	CIRCUIT PLATE	1		
4-011	524-25001-200	CIRCUIT PLATE SCREW	1		
4-012	477-25001-200	VALVE SPRING	1		
4-013	603-25001-200	NEEDLE VALVE	1		
4-014	473-25001-200	VALVE HINGE	1		
4-015	605-25001-200	HINGE PIN	1		
4-018	546-25001-200	HINGE PIN SET SCREW	1		
4-017	463-25008-200	IDLE ADJUST SPRING	1		
4-018	462-25008-200	IDLE ADJUST SCREW	1		
4-019	578-25001-200	INLET SCREEN	1		
4-020	505-25004-200	GOVERNOR CONTROL PLATE	1		
4-021	507-25004-200	CONTROL LEVER	1		
4-022	548-25004-200	SCREW 3X8	1		
4-023	489-25004-200	STOP RING	1		
4-024	461-25001-200	SLOW ADJUST SCREW	1		
4-025	460-25001-200	MAIN JET SCREW	1		
4-026	623-25001-200	HIGH/LOW ADJUST SPRING	2		
4-027	514-25001-200	SET SCREW	1		
4-028	486-25004-200	CONTROL LEVER SPRING	1		
4-029	490-25004-200	GOVERNOR SPRING LEVER	1		
4-030	630-25004-201	GOVERNOR LEVER	1		
4-031	549-25004-200	SPECIAL WASHER	1		
4-032	467-25003-200	SHUTTER SCREW	2		
4-033	464-25004-800	THROTTLE SHAFT COMP.	1		
4-034	488-25012-200	THROTTLE VALVE	1	M	
4-034	488-25001-200	THROTTLE VALVE	1		

FIG.5 DRILL BODY



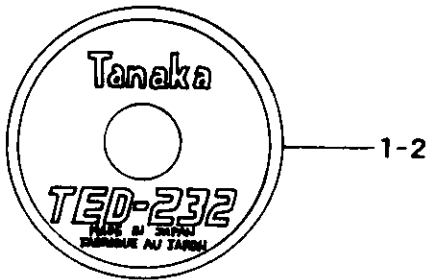
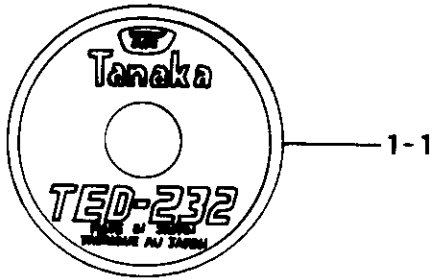
REF. NBR	PART NBR	PART NAME	QTY	SERIAL NBR	REMARKS
5-001	002-32120-203	GEAR CASE A	1		
5-002	006-32120-204	GEAR CASE B	1		
5-003, 1	226-32120-804	CLUTCH HOUSING COMP.	1	-J132330	
5-003	226-32120-805	CLUTCH HOUSING COMP.	1 P	-K079511	
5-003	226-32120-805	CLUTCH HOUSING COMP.	1 I	-K079511	
5-003	226-32120-806	CLUTCH HOUSING COMP.	1	K079512-	
5-004	012-32120-200	GEAR 2	1		
5-005	016-32120-201	GEAR 3	1		
5-006	068-00300-200	WOOD-RUFF KEY 3X10X3.7	1		
5-007	999-62091-211	NEEDLE BEARING TLA912	2		
5-010	999-05041-201	KNOCK PIN 4X12	2		
5-011	999-61600-102	BALL BEARING #6001Z, 28MM/OD	1		
5-012	999-61600-100	BALL BEARING #6001, 28MM/OD	1		
5-013	993-50012-002	STOP RING C-12 EX	1		
5-014	018-32120-200	GEAR 4	1		
5-015	999-61720-221	BALL BEARING #7202B, 35MM/OD	1		
5-016	040-32120-201	BEARING WASHER	1		
5-017	999-61620-202	BALL BEARING #6202Z, 35MM/OD	1		
5-018	993-51035-002	STOP RING C-35 IN	1		
5-019	068-01006-200	WOOD-RUFF KEY 3X13X5	1		
5-020	022-32120-201	DRIVE SHAFT	1		
5-022, 1	100-12000-200	STUD BOLT 6X26	2	-E055570	
5-022	990-23060-221	BOLT 6X22 W/PLUS	4 N	E055571-	
5-023	100-12100-200	STUD BOLT 6X30	2 D	E055571-	
5-024	992-10060-012	S. WASHER 6	4		
5-025	991-01060-011	NUT 6	4 D	E055571-	
5-026	990-11050-181	SCREW 5X18	4		
5-027	992-10050-012	S. WASHER 5	4		
5-028	258-32120-805	HANDLE COMP. A	1 I	-K079511	
5-028	258-32120-806	HANDLE COMP. A	1	K079512-	
5-029	055-32130-200	HANDLE GRIP	1		
5-030	101-32120-201	THROTTLE LEVER	1		
5-034	990-11050-221	SCREW 5X22	1		
5-035	991-01050-011	HEX. NUT 5	2		
5-036	903-32201-200	WIRE CLAMP BAND	2		
5-037	990-11060-161	SCREW 6X16	1		
5-038	992-10060-012	S. WASHER 6	1		
5-039	259-32120-810	HANDLE COMP. B	1		
5-040	025-32120-200	GEAR WASHER	2		
5-041	992-09350-030	WAVE WASHER B.B 35	1		
5-042	992-10100-012	S. WASHER 10	1		
5-043	231-32100-210	GEAR SHAFT COLLAR B	1	-J132330	
5-043	231-32175-200	GEAR SHAFT COLLAR B	1 P	J132331-	
5-044	200-33210-210	GREASE NIPPLE	1		

FIG.6 TOOLS & OPTIONAL PARTS



REF. NBR	PART NBR	PART NAME	QTY	SERIAL NBR	REMARKS
6-000	059-32120-810	CHUCK HANDLE SET	1	I -H248180	
6-000	059-32120-911	CHUCK HANDLE SET	1	H248161-	
6-001	060-32120-801	DRILL CHUCK ASS'Y	1	-E120423	
6-001	060-32120-910	DRILL CHUCK ASS'Y	1	N -H248160	
6-001	060-32120-910	DRILL CHUCK ASS'Y	1	I -H248180	
6-001	060-32120-911	DRILL CHUCK ASS'Y	1	H248161-	
6-002	061-32120-800	CHUCK HANDLE COMP.	1	-E120423	
6-002	061-32120-810	CHUCK HANDLE COMP.	1	N -H248160	
6-002	061-32120-810	CHUCK HANDLE COMP.	1	I -H248160	
6-002	061-32120-811	CHUCK HANDLE COMP.	1	H248161-	
6-003	829-20000-800	COMBI. BOX SPANNER 13X19 ,PLUS	1		
6-004	845-20000-200	SPECIAL WRENCH 31	1		
6-005	049-29321-750	SPANNER 17X19	1		

FIG.7 MARKS



REF. NBR	PART NBR	PART NAME	QTY	SERIAL NBR	REMARKS
7-001,1	906-32135-201	NAME PLATE	1 R	-F135800	
7-001,2	906-32135-202	NAME PLATE	1	-H248160	
7-001	950-32124-200	PROFORCE MARK A	1 N	H248161-	
7-002,1	929-0608A-200	SYMBOL MARK	1 R	-F135800	
7-002,2	929-0608A-201	SYMBOL MARK	1	-H248160	
7-002	906-32124-200	NAME PLATE	1 N	H248161-	

Free Manuals Download Website

<http://myh66.com>

<http://usermanuals.us>

<http://www.somanuals.com>

<http://www.4manuals.cc>

<http://www.manual-lib.com>

<http://www.404manual.com>

<http://www.luxmanual.com>

<http://aubethermostatmanual.com>

Golf course search by state

<http://golfingnear.com>

Email search by domain

<http://emailbydomain.com>

Auto manuals search

<http://auto.somanuals.com>

TV manuals search

<http://tv.somanuals.com>