



Product Description

The high power POWERVS15 BP is a compact, versatile and extremely efficient bandpass subwoofer system, designed to extend the low frequency response of Tannoy POWERV loudspeakers and increase system headroom. Extending the frequency response of these systems to below 40Hz this highly efficient design is capable of providing output levels normally associated with considerably larger enclosures.

The POWERVS15 BP consists of one high efficiency 380mm (15.00") with a 76mm (3.00") voice coil drive unit mounted in a compact and sturdy, black or white painted cabinet constructed from 15mm (0.62") multi-ply birch hardwood; robust enough to survive the punishment that speakers systems are subjected to on the road and in club installations.

Delivering impressive levels of accuracy and performance, the POWERVS15 BP is equipped with a highly efficient, flexible and reliable Class D power amplifier incorporating a switching power supply. The amplifier section and power supply were developed simultaneously and therefore optimally matched to minimise noise and enhance stability. The power module combines light, efficient and cool-running amplification, comprehensive driver protection and equalisation into a single compact unit. Clean, undistorted sound is delivered, even when driven at very high power levels. No cooling fans are required so the system runs quietly and is not prone to internal dust contamination.

All signal processing functions have been precisely tailored; crossover frequencies and slopes, EQ, phase corrections and limiting. LED's on the rear panel indicate signal presence, signal activity, and power. Signal input and audio link are via XLR, while the mains connector is a Neutrik locking Powercon type. The full range POWERV models have a high pass mode that enables a simple top box and subwoofer combination to be created without the need for an external crossover. Two low pass setting options on the subwoofer amplifier fully optimise integration with the full range units.

Available in black or white, this versatile powered subwoofer also has, due to effective acoustic matching to the other POWERV models, a wide range of uses in fully integrated installations as diverse as theme bars, performing arts centres, high quality public address, theme parks, leisure venues, audio visual, houses of worship and 'dry hire' rental.

The POWERVS15 BP comes complete with recessed carrying handles for ease of transportation and 10mm flying points provide a quick and secure flying. A blanking plate covers a recess for the optional VTH pole mount.

Features

- 380mm (15.00") bass unit
- Compact and versatile birch plywood enclosure
- Rugged, highly efficient Class D amplification with universal power supply
- 2 x integral carry handles
- Multiple flying points and accessory mounting hardware option

Applications

- Live sound reinforcement
- Theme pubs and nightclubs
- Theatre front of house and effects
- Movie theatres and cinemas
- Side fill in large-scale music reinforcement
- Theme parks and leisure venues
- Sports and multi-use stadiums
- Audio visual
- High quality public address
- Houses of Worship
- Extended bass for POWERV full range loudspeakers
- 'Dry hire' rental

Tannoy United Kingdom
 Tannoy North America
 Tannoy Deutschland
 Tannoy France

T: 00 44 (0) 1236 420199
 T: 00 1 (519) 745 1158
 T: 00 49 (180) 1111 881
 T: 00 33 (0)1 7036 7473

E: enquiries@tannoy.com
 E: inquiries@tannoyna.com
 E: anfragen@tannoy.com
 E: ventes@tannoy.com

tannoy®.com



POWERVS15 BP

TANNOY®

TECHNICAL SPECIFICATIONS

System	POWERVS15 BP	
System Type	Subwoofer - Bandpass	
Frequency Response (-3dB) ⁽¹⁾ Low pass filter A on	47Hz - 80kHz	
Frequency Range (-10dB) ⁽¹⁾ Low pass filter B on	47Hz - 110kHz	
Frequency Response (-3dB) ⁽¹⁾ Low pass filter A on	37Hz - 80kHz	
Frequency Range (-10dB) ⁽¹⁾ Low pass filter B on	37Hz - 110kHz	
Driver Complement	1 x 380mm (15.00") High excursion bass driver	
Crossover	User selectable LPF	
Rated Maximum SPL ⁽²⁾		
Average	124dB	
Peak	130dB	
Distortion		
10% Full Power (15.5V)	2nd Harmonic	3rd Harmonic
40Hz	0.65%	0.67%
100Hz	3.05%	0.70%
1% Full Power (4.9V)	2nd Harmonic	3rd Harmonic
40Hz	0.13%	0.30%
100Hz	0.76%	0.24%

PSU Specifications

Input Connector	Locking Neutrik Powercon
Voltage Selection	Automatic (115 / 230V, 45 - 65Hz)
Type	High current, high frequency switch mode
Efficiency	>90% typical
Input voltage	100v / 115v / 230v nominal +/-10%
Mains fuse	External
Fuse type	T10AT
Other features	Automatic soft start

Notes:

- (1) Average over stated bandwidth. Measured at 1 metre on axis.
 (2) Unweighted pink noise input, measured at 1 metre in an anechoic chamber

A full range of measurements, performance data, CLF and Ease™ Data can be downloaded from www.tannoy.com

Full independent verification of published specifications carried out by NWA Labs, California can also be obtained from the downloads section of www.tannoy.com

Tannoy operates a policy of continuous research and development. The introduction of new materials or manufacturing methods will always equal or exceed the published specifications, which Tannoy reserves the right to alter without prior notice. Please verify the latest specifications when dealing with critical applications.

Construction	
Enclosure	100 litre internally braced 15mm (0.62") birch plywood enclosure
Finish	Textured black or white paint with custom colours on request
Connectors	1 x female XLR (input) 1 male XLR (link) 1 x Neutrik Powercon
Controls & Indicators	Level control Power LED (Blue) Signal LED (Green) Limit LED (Red) Full range / High pass switch (110Hz) Power switch
Fittings	8 x M10 flying inserts 2 x recessed carry handles Blanking plate for optional VTH pole mount 4 x Rubber feet
Dimensions H x W x D	665 x 440 x 440mm 26.18 x 17.32 x 17.32"
NET Weight	30kg (66lbs)
Electronics	
Maximum signal input for clip	Input attenuator at minimum: +18dBu Input attenuator at maximum: +5dBu
Output noise	-105dB unweighted, referenced to maximum output (22kHz bandwidth)
Efficiency	>90% typically
Damping Factor	400 ref 8 Ohms
Distortion	<0.05% @ 1kHz -3dB output (22kHz bandwidth)
Input Impedance	5.6kOhms unbalanced 11.2kOhms balanced
Protection systems	Over Current Temperature Brownout Mains Indicators
	Excessive over current causes shutdown Limiters applied Automatic protection and recovery Inrush current limiting 1x Limit LED 1x Signal LED 1x Power LED
Number of channels	One
System Type	Class D

Ordering Information

PART NUMBER	MODEL NAME	COLOUR	PACKED QUANTITY
8001 4310	POWERVS15 BP	Black	1
8001 4311	POWERVS15 BP	White	1

Tannoy United Kingdom
 Tannoy North America
 Tannoy Deutschland
 Tannoy France

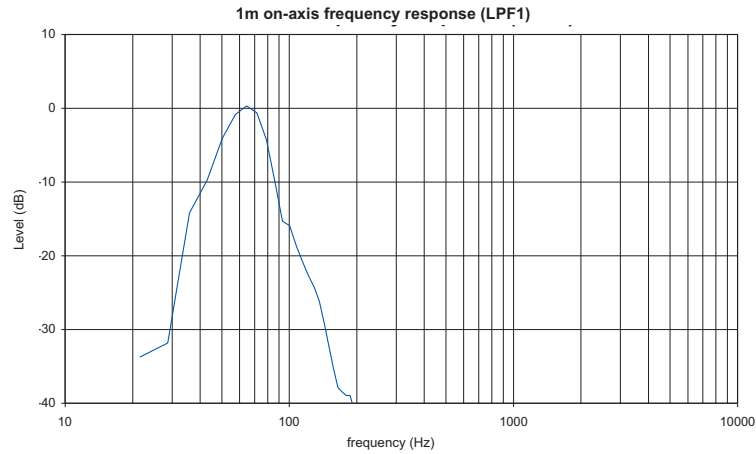
T: 00 44 (0) 1236 420199
 T: 00 1 (519) 745 1158
 T: 00 49 (180) 1111 881
 T: 00 33 (0)1 7036 7473

E: enquiries@tannoy.com
 E: inquiries@tannoyna.com
 E: anfragen@tannoy.com
 E: ventes@tannoy.com

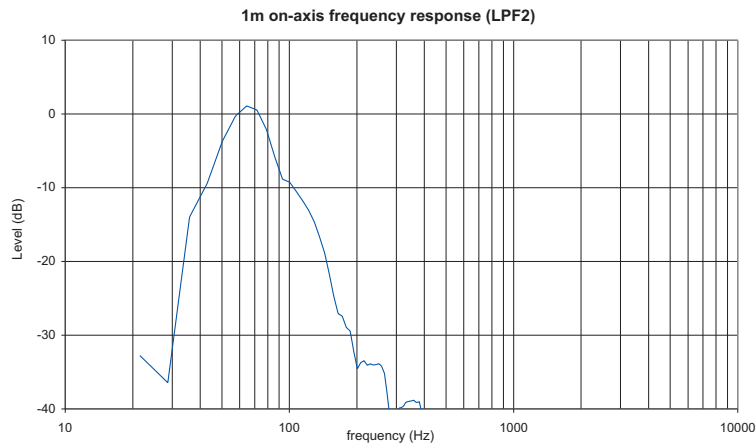
tannoy.com



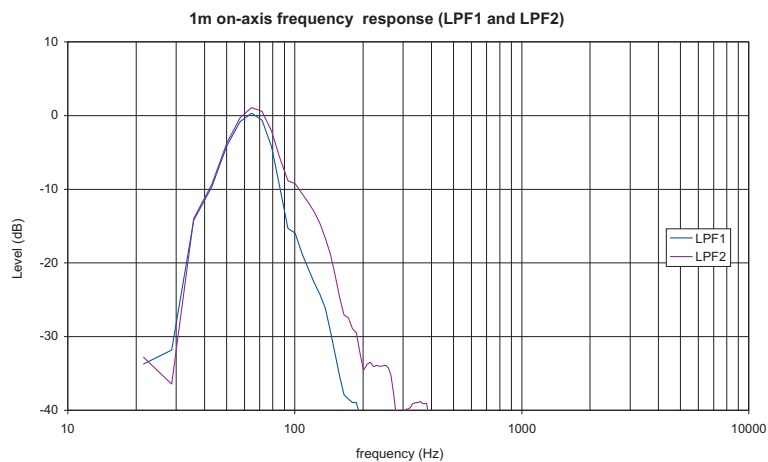
PERFORMANCE MEASUREMENTS



FEQUENCY RESPONSE



FEQUENCY RESPONSE



FEQUENCY RESPONSE

Tannoy United Kingdom
 Tannoy North America
 Tannoy Deutschland
 Tannoy France

T: 00 44 (0) 1236 420199
 T: 00 1 (519) 745 1158
 T: 00 49 (180) 1111 881
 T: 00 33 (0)1 7036 7473

E: enquiries@tannoy.com
 E: inquiries@tannoyna.com
 E: anfragen@tannoy.com
 E: ventes@tannoy.com

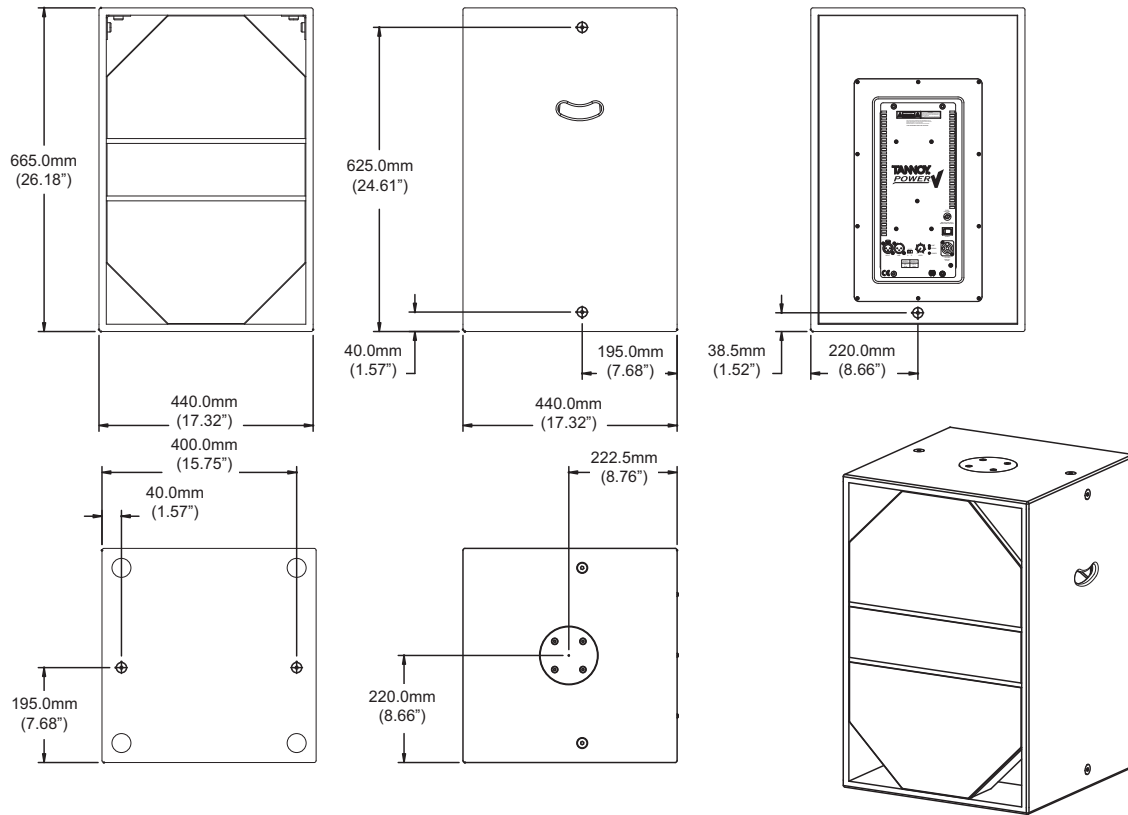
tannoy®.com



POWERVS15 BP

TANNOY®

DIMENSIONAL SKETCHES



Tannoy United Kingdom
 Tannoy North America
 Tannoy Deutschland
 Tannoy France

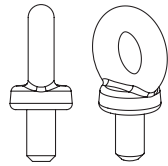
T: 00 44 (0) 1236 420199
 T: 00 1 (519) 745 1158
 T: 00 49 (180) 1111 881
 T: 00 33 (0)1 7036 7473

E: enquiries@tannoy.com
 E: inquiries@tannoyna.com
 E: anfragen@tannoy.com
 E: ventes@tannoy.com

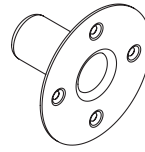
tannoy.com



OPTIONAL ACCESSORIES & MOUNTING OPTIONS



VEB



VTH

Ordering Information

PART NUMBER	MODEL NAME	COLOUR	PACKED QUANTITY
8001 2820	VEB	-	1
8001 2860	VTH	Black	1
8001 2870	VTH	White	1

Architectural specifications

The bass loudspeaker shall be of the bandpass type consisting of one 380mm (15.00") long excursion low frequency transducer mounted on an internal baffle and driven by an integrated single channel (bridged) Class D amplifier with user selectable low pass filter.

The optimally tuned 100 litre enclosure shall be of 15mm (0.62") birch plywood construction finished in a wear resistant, textured black paint. There shall be eight M10 rigging points and a blanking plate for the installation of a pole mount socket.

Performance of the subwoofer shall meet or exceed the following criteria: Frequency response measured at 1 metre on axis with swept sine wave shall be 47Hz to 80Hz (-3dB) with low pass filter A switched on and 47Hz to 110Hz (-3dB) with low pass filter B switched on. Rated average SPL shall be 124dB (anechoic) on axis at 1 metre. Connectors shall be 1 x female XLR (input), 1 x male XLR (link) and 1 x Neutrik Powercon. The speaker shall be fitted with the following controls and indicators: level control, blue power LED, green signal LED, red limit LED, user selectable LPF and a power switch.

The enclosure shall not exceed the following dimensions: 665 x 440 x 440mm or 26.18 x 17.32 x 17.32" (H x W x D)

The Tannoy subwoofer loudspeaker system shall be... POWERVS15 BP

Free Manuals Download Website

<http://myh66.com>

<http://usermanuals.us>

<http://www.somanuals.com>

<http://www.4manuals.cc>

<http://www.manual-lib.com>

<http://www.404manual.com>

<http://www.luxmanual.com>

<http://aubethermostatmanual.com>

Golf course search by state

<http://golfingnear.com>

Email search by domain

<http://emailbydomain.com>

Auto manuals search

<http://auto.somanuals.com>

TV manuals search

<http://tv.somanuals.com>