

# Targus®

## USB 3.0

# ExpressCard®

1 YEAR LIMITED WARRANTY: We pride ourselves on the quality of our products. For complete warranty details and a list of our worldwide offices, please visit [www.targus.com](http://www.targus.com). Features and specifications are subject to change without notice. Microsoft, Windows and Windows Vista are registered trademarks or trademarks of Microsoft Corporation in the United States and/or other countries. Mac is a trademark of Apple Inc., registered in the U.S. and other countries. Logitech is a registered trademark of Logitech International in the United States and other countries. All trademarks and registered trademarks are the property of their respective owners. ©2011 Targus Group International, Inc.



# User Guide

Download from [www.Somanuals.com](http://www.Somanuals.com). All Manuals Search And Download.

## Introduction

Thank you for your purchase of the Targus USB 3.0 ExpressCard. This card fits into your computer's ExpressCard slot. A DC power cable is included if additional power is needed.

## Contents

- Targus USB 3.0 ExpressCard
- DC to USB cable
- Driver CD
- User Guide

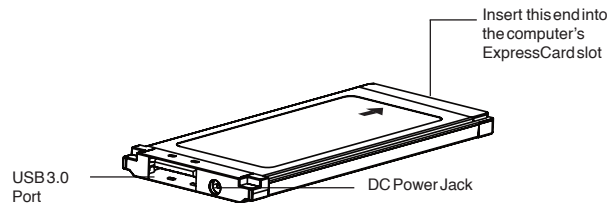
## System Requirements

- Microsoft Windows XP®
- Microsoft Windows Vista®
- Microsoft Windows® 7

## Installation

1. Insert USB 3.0 Express Card into the PCI-Express slot on your laptop computer.
2. The "Found New Hardware Wizard" Window will appear, please click "Cancel".
3. Insert the included driver CD into your disc drive and click Run Autorun.exe to install.
4. Follow the on-screen instructions to complete the installation.

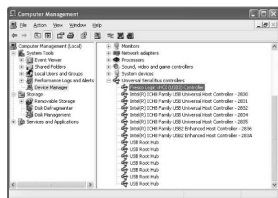
Note: You may need to restart your system for the installation to take effect.



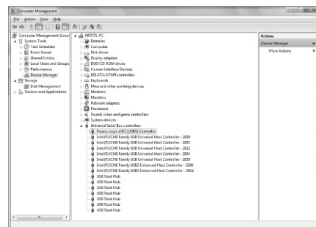
## Installation Verification

After finishing installation, the system will detect the device. You can go to Device Manager to verify the entire installation.

Windows XP



Windows Vista/7



**NOTE: THE POWER ADAPTER IS RECOMMENDED TO USE FOR HIGH POWER CONSUMPTION DEVICES.**

## Specification

Items	Description
Interface	USB3.0
ChipSet	Fresco, FL 1000G
Connector	Host upstream link: Express Card Express Card downstream link: USB3.0 A Type Female Connector
LED Indicator	NA
Operation Temperature	10~40° C
Storage Temperature	-20~70° C
Power Requirement	Power Spec: 3.3V/1.2V Power Consumption: 181.5 mA
Cosmetic Describe	Housing: 75.1 x 33.8 x 4.8 MM (L X W X H) Weight : 16.7 g Color: Silver Housing Material: Nickel Plating

## Technical Support

For technical questions, please visit:

<b>US</b>	Internet: <a href="http://www.targus.com/support.asp">www.targus.com/support.asp</a>
<b>Australia</b>	Internet: <a href="http://www.targus.com/au">www.targus.com/au</a> Email: <a href="mailto:infoaust@targus.com">infoaust@targus.com</a> Telephone: 1800-641-645
<b>New Zealand</b>	Telephone: 0800-633-222

## Product Registration

Targus recommends that you register your Targus accessory shortly after purchasing it. Go to:

<http://www.targus.com/registration.asp>

You will need to provide your full name, email address, country of residence and product information.

## Warranty

Targus warrants this product to be free from defects in materials and workmanship for one year. If your Targus accessory is found to be defective within that time, we will promptly repair or replace it. This warranty does not cover accidental damage, wear and tear, or consequential or incidental loss. Under no conditions is Targus liable for loss of, or damage to devices; nor loss of, or damage to, programs, records, or data; nor any consequential or incidental damages, even if Targus has been informed of their possibility. This warranty does not affect your statutory rights.

## Regulatory Compliance

This device complies with Part 15 of the FCC Rules. Operation is subject to the following two conditions: (1) This device may not cause harmful interference, and (2) This device must accept any interference received, including interference that may cause undesired operation.

## FCC Statement Tested to Comply

This equipment has been tested and found to comply with the limits of a Class B digital device, pursuant to Part 15 of the FCC Rules. These limits are designed to provide reasonable protection against harmful interference in a residential installation. This equipment generates, uses, and can radiate radio frequency energy and if not installed and used in accordance with the instructions, may cause harmful interference to radio communications. However, there is no guarantee that interference will not occur in a particular installation. If this equipment does cause harmful interference to radio or television reception, which can be determined by turning the equipment off and on, the user is encouraged to try to correct the interference by one or more of the following measures:

- Reorient or relocate the receiving antenna;
- Increase the separation between the equipment and receiver;
- Connect the equipment into an outlet on a circuit different from that to which the receiver is connected;
- Consult the dealer or an experienced radio/TV technician for help.

Changes or modifications not authorized by the party responsible for compliance could void the user's authority to operate this product.

## Declaration of Conformity

Hereby, Targus, declares that this device is in compliance with the essential requirements and other relevant provisions of Directive 1999/5/EC.

Microsoft, Windows, and Windows Vista are either registered trademarks or trademarks of Microsoft Corporation in the United States and/or other countries. All trademarks and registered trademarks are the property of their respective owners. All rights reserved. Features and specifications are subject to change without notice. © 2010. Targus Group International, Inc. and Targus, Inc., Anaheim, CA 92806 USA

## Free Manuals Download Website

<http://myh66.com>

<http://usermanuals.us>

<http://www.somanuals.com>

<http://www.4manuals.cc>

<http://www.manual-lib.com>

<http://www.404manual.com>

<http://www.luxmanual.com>

<http://aubethermostatmanual.com>

Golf course search by state

<http://golfingnear.com>

Email search by domain

<http://emailbydomain.com>

Auto manuals search

<http://auto.somanuals.com>

TV manuals search

<http://tv.somanuals.com>