



External Cardbus Drive
for Combo DVD/CD-RW-ROM and DVD-ROM



Making Your Mobile Life Easier.

Visit our Web site at: www.targus.com

Features and specifications are subject to change without notice. © 2003 Targus Corp.

400-0082-001B

USER'S GUIDE
Making Your Mobile Life Easier.

BRUSSELS HANNOVER BARCELONA TOKYO MILANO AMSTERDAM SINGAPORE LONDON PARIS NEW YORK LOS ANGELES TORONTO HONG KONG SYDNEY



Contents

| | |
|---|----|
| Targus External Cardbus Drive | 5 |
| Introduction | 5 |
| System Requirements..... | 5 |
| Connecting the Drive to Your Computer | 6 |
| Installing the Driver Software..... | 6 |
| Windows® 98 Operating System | 7 |
| Windows® Me Operating System | 8 |
| Windows® 2000/XP Operating System | 8 |
| Windows NT® 4.0 Operating System | 9 |
| Using the Drive | 10 |
| Inserting and Removing a Disc..... | 10 |
| Removing a Disc Using Emergency Eject..... | 11 |
| Playing Audio CDs | 11 |
| Hot Swapping..... | 11 |
| Reading Data DVDs and Playing DVD Movies..... | 12 |
| Writing and Rewriting CDs | 12 |
| Things to Remember | 12 |
| Operating Hints | 12 |
| Safety Measures | 13 |

| | |
|--|----|
| Specifications | 13 |
| Troubleshooting | 14 |
| Solving General Problems | 14 |
| Changing the Drive Letter Assignment | 15 |
| Writing and Rewriting Problems | 16 |
| Technical Support | 16 |
| Product Registration | 17 |
| Warranty | 17 |
| Regulatory Compliance | 18 |
| FCC (Federal Communications Commission)..... | 18 |

TARGUS EXTERNAL CARDBUS DRIVE

Introduction

Thank you for purchasing a Targus External Cardbus Drive. After installing a cardbus drive, you can use it at any time by inserting the PC Card cable into your computer's Type II PC Card slot.

This user's guide describes how to connect the cardbus drive to your computer and install the default driver software.

System Requirements

To use the cardbus drive, your computer must meet the following hardware requirements and run one of the operating systems listed below.

Hardware

- PC with an Intel® Pentium® processor or equivalent and a hard disk drive
- 64 MB RAM or higher, depending on the operating system
- PCMCIA Card interface (type II or higher)
- Diskette drive

Operating System

- Windows® 98/Me/2000/XP
- Windows NT® 4.0

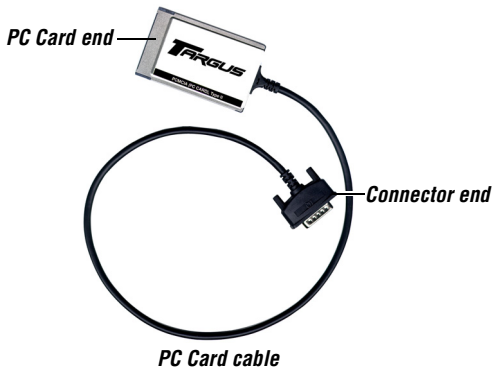


NOTES: The cardbus drive receives its power from your computer's PC Card slot, which must be in full compliance with PC Card specifications and supply a minimum of 5V/1A of power.

For the DVD movie playback feature to work, you must have a DVD-ROM decoder installed in your computer or a player application, such as DVExpress or Power DVD, set up under the Windows® 98/Me/2000/XP operating system. DVD movie playback is not available with the Windows NT® operating system.

Connecting the Drive to Your Computer

- 1 Turn off your computer and any devices connected to it.
- 2 Attach the connector end of the PC Card cable to the cardbus drive's PC Card cable port.



- 3 Plug the PC Card end of the cable into any Type II PC Card slot on your computer.
- 4 Connect the supplied AC adapter to the AC power jack on the cardbus drive and plug the adapter into a working power outlet.



NOTE: For the best results, charge the drive using the supplied AC adapter for at least one hour before connecting it to your computer and installing the driver software.

You can now begin installing the driver software.

Installing the Driver Software

After connecting the cardbus drive to your computer, you can install the driver software for your operating system.



NOTES: Installing the cardbus drive may change internal drive letter assignments. To keep the original drive letter assignments, you can change the letter for the combo drive. See “Changing the Drive Letter Assignment” on page 15.

To write and rewrite CDs, if you are running the Windows® 98/Me/2000 operating systems, you must also install the supplied CD-writing software. See “Writing and Rewriting CDs” on page 12.

Windows® 98 Operating System

- 1 Turn on your computer.
- 2 Insert the driver software diskette into your computer’s diskette drive.



NOTE: If your computer does not have a diskette drive, you can download the drivers from the following Web site: <http://www.targus.com/support.asp>

The Add New Hardware Wizard appears.

- 3 Click **Next**.

The locate driver screen appears.



Sample New Hardware Wizard locate driver screen

- 4 Select **Search for the best driver for your device (Recommended)** and click **Next**.

The search driver location screen appears.

- 5 Select **Floppy disk** and click **Next**.

- 6 Click **Next** to confirm selection of the driver.

The ready to install screen appears.

- 7 Click **Next**.

The driver loads from the diskette.

- 8 Click **Finish** to complete the driver installation.

You are now ready to begin using your cardbus drive.

Windows® Me Operating System

- 1 Turn on your computer.

- 2 Insert the driver software diskette into your computer's diskette drive.

The Add New Hardware Wizard appears.

- 3 Select **Automatic search for a better driver (Recommended)** and click **Next**.

The driver loads from the diskette.

- 4 Click **Finish** to complete the driver installation.

You are now ready to begin using your cardbus drive.

Windows® 2000/XP Operating System

- 1 Turn on your computer.

- 2 Insert the driver software diskette into your computer's diskette drive.

The Found New Hardware Wizard appears and the operating system installs the drivers automatically. No other steps are necessary.

You are now ready to begin using your cardbus drive.

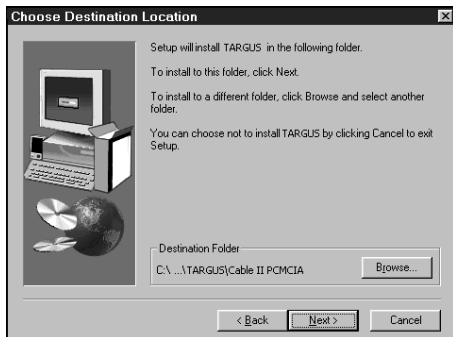
Windows NT® 4.0 Operating System

- 1 Turn on your computer.
- 2 Insert the driver software diskette into your computer's diskette drive.
- 3 Click **Start, Run** then enter A:\DOS_NT40\SETUP.EXE (where A: is the path of your diskette drive) and click **OK**.

The driver software agreement screen appears.

- 4 Click **OK** to accept the agreement and continue setup, or **Cancel** to exit setup.

If you choose to continue setup, the Choose Destination Location screen appears.



Choose Destination Location screen

- 5 Click **Next** to keep "C:\Program Files\TARGUS\Cable II PCMCIA" as the destination folder. To copy the files into a different directory, click **Browse** and locate the desired path name, then click **Continue** to confirm the new destination folder.

To complete the installation, follow the onscreen instructions.

You are now ready to begin using your cardbus drive.

Using the Drive

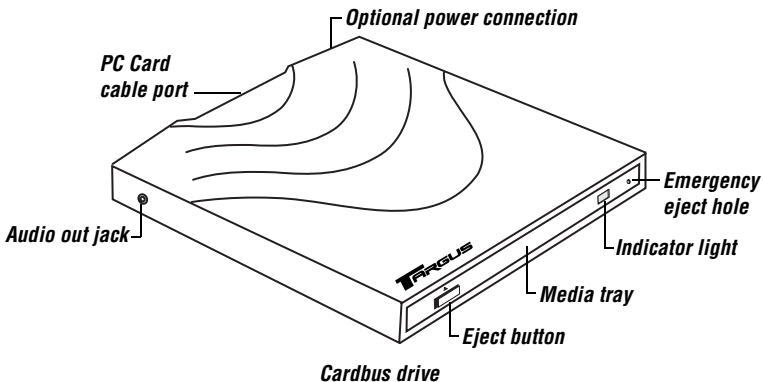
Inserting and Removing a Disc

- 1 Turn on your computer and press the eject button to open the media tray.
- 2 To insert a disc, hold it by the edges and place it in the tray with the readable (plain) side down. If you are using a high capacity disc, place the side of the disc you want the drive to read facing down. Then, gently press down on the disc until it snaps into place.
- 3 To remove a disc, grasp it by the edges and gently pull up until the disc is released.



CAUTION: Avoid touching the readable (plain) side(s) of a disc. Touching the readable side of the disc may cause read errors, poor performance or failed operation.

- 4 Close the media tray by gently pushing it until it clicks into place.



Removing a Disc Using Emergency Eject

If you need to remove a disc when there is no power to your computer, you can open the media tray manually. To do this, gently insert a slim, straight object, such as a bent-open paper clip, into the emergency eject hole until you feel some resistance. Remove the paper clip and carefully open the tray by hand.

Playing Audio CDs

You can play audio CDs on your cardbus drive by using the CD Player application included in the operating system. To hear the audio, you can either:

- Connect headphones or external speakers to the audio out jack on the cardbus drive.
- Connect an audio cable from the audio out jack on the cardbus drive to the line in jack on your computer.

Hot Swapping

You can connect and disconnect the cardbus drive while the computer is running. To attach the cardbus drive, insert the PC Card cable into your computer's Type II PC Card slot.



NOTE: If you are running the Windows NT® operating system, you must have the Softex Card Executive 2.0 card and socket services software installed on your computer in order to hot swap the drive.

To remove the PC Card cable while the computer is turned on:

- 1 Double-click the **PC Card** icon in the system tray or click **Start**, **Settings**, and **Control Panel**.
- 2 Double-click **PC Card (PCMCIA)**.
- 3 Highlight **PC Card cable** and click **Stop**.

The message "You may now safely remove the card" appears.

- 4 Remove the PC Card cable from your computer.

Reading Data DVDs and Playing DVD Movies

If you purchased a DVD or CDRW/DVD combo drive:

- You can read data DVDs without installing any special software.
- To play back movies, you must have a DVD-ROM decoder installed in your computer or have a DVD player application set up under the Windows® operating system.



NOTE: The Windows NT® operating system does not support DVD movie playback.

Writing and Rewriting CDs

If you purchased a drive with the CDRW capability and are running the Windows® 98/Me/2000/XP operating system, you can write and rewrite CDs after installing a third party writing software, such as Easy CD Creator™. For your convenience, the Easy CD Creator software is supplied. To install the writing software:

- 1 Insert the supplied CD-ROM into the cardbus drive (or your computer's internal CD-ROM drive if it has one).
- 2 If setup does not begin automatically, click **Start**, then **Run**, and enter D:\setup.exe (where D: is the path of the CD-ROM or combo drive) and then click **OK**.
- 3 Follow the on-screen instructions to complete installation.

For more information on how to use the Easy CD Creator application, refer to the documentation on the CD-ROM.

Things to Remember

Operating Hints

- Use the emergency eject mechanism only if the cardbus drive is not connected to your computer or if the computer's battery is flat and there is no power available for the eject button. Excessive use of the emergency eject mechanism may damage it and cause the mechanism to stop working.

- Never press the eject button while the drive is accessing a disc.
- The cardbus drive operates in either an upright or horizontal position. To prevent possible damage, avoid changing the drive's position while it is in use.
- Avoid using or storing the cardbus drive in extreme temperatures. The environmental specifications while operating are 50-113 F (10-45 C).
- After transporting the cardbus drive, allow it to reach room temperature before using it.



CAUTION: Changes in temperature during transport, particularly from a cool to a warmer temperature, can cause condensation to form in the drive and may result in operating problems. Allowing the drive to reach room temperature helps to prevent this.

- Avoid using the cardbus drive in dusty or humid surroundings.
- A short delay is normal before the cardbus drive reads an audio CD, CD-ROM, DVD or DVD-ROM.



WARNING: Never clean the cardbus drive with a commercially available CD or CD-ROM cleaning set as doing so may cause damage to the drive.

Safety Measures

- Any attempt to disassemble, adjust or repair the cardbus drive may result in exposure to laser light or other safety hazards.
- This is a Class 1 Laser Product. This product complies with all applicable safety standards, DHHS Rules 21 CFR Chapter 1, Sub chapter J. The laser beam generated is totally enclosed during all modes of normal operation, and no hazardous laser light is emitted from the drive.

Specifications

| | | |
|-------------------|---------|-----------------------|
| Dimensions | Length: | 6.81 inches (17.3 cm) |
| | Width: | 5.35 inches (13.6 cm) |
| | Height: | 0.78 inches (2 cm) |
| Weight | | 0.9 pounds (450 g) |

Connection to the computer

PC Card cable via PC Card slot (PCMCIA, Type II)

Voltage

DC + 5V± 5%

Media Formats

The cardbus drive reads formats according to the following CD (compact disc) and DVD (digital versatile disc) standards:

- Audio CDs
- CD-Digital Audio
- CDI, CDI-Ready, CD-Midi, CD-R, CD-RW, CD Plus
- CD-ROM XA
- CD-TEXT, CD-EXTRA
- Data-CDs (Joliet)
- DVD-ROM, DVD-R
- DVD-Video
- Enhanced CD
- i-trax CD
- Kodak Photo CDs (single- and multi-session)
- Mixed Mode CDs
- MS-DOS® operating system data CDs (High Sierra, Mode 1 & Mode 2 complying with ISO 9660)
- UDF (Universal Disc Format)
- Video CDs

Troubleshooting

To view Frequently Asked Questions and download Driver updates, visit our Web site at: <http://www.targus.com/support>

Solving General Problems

If the cardbus drive is not functioning:

- Verify that your system meets the hardware requirements. See “System Requirements” on page 5
- Check that the drive is turned on and getting power.

- Make sure the cable is firmly attached to the drive and that the PC Card is fully inserted into the PC Card slot of your computer.
- Remove the driver software and reinstall it. To do this:
 - 1 Insert the driver software diskette into your computer's diskette drive.
 - 2 From your desktop, double-click the **My Computer** icon.
 - 3 Select the diskette drive, double-click the **DriverRemove.exe** file and follow the on-screen instructions.

If there is no sound when using the cardbus drive, check that:

- The disc you are using is an audio disc or supplies audio output.
- The headphones/speakers are correctly connected.
- The cable is in good condition.
- The volume is turned up.
- The audio software is installed.

Changing the Drive Letter Assignment

The following steps describe how to change the drive letter for the cardbus drive under the Windows® 95/98/Me operating system.

- 1 Click **Start**, **Settings**, and then **Control Panel**.
- 2 Click **System** and select the **Device Manager** tab.
- 3 Click either **DVD-ROM** or **Drive**, then **cardbus drive**.
- 4 Click **Properties**, then **Settings**.

The current drive letter assignment and the reserved drive letters appear.

- 5 Under **Reserved Drive Letter** enter the letter you want to represent the cardbus drive.
- 6 Click **OK** and restart your computer so that the changes take effect.

Writing and Rewriting Problems

If the cardbus drive is not writing or rewriting data properly, try the following:

- Reduce the write/rewrite speed from 4x to 2x.
- Disable all Advanced Power Management (APM) functions.
- Remove or disable all Terminate and Stay Resident (TSR) programs, such as your anti-virus program.
- Defragment your hard disk drive.

Technical Support

For technical questions, please visit:

Internet: <http://www.targus.com/support.asp>

Have the following information available:

- The serial number of your cardbus drive (located on the back of the drive).
- The name and model of your computer and details of its hardware specification.
- The name and version number of your operating system and of the software that has the problem.
- A detailed description of the problem including exact error messages and when these errors occur.
- What you do to replicate the problem.
- If this is a new problem, whether you have recently changed your system configuration and in what way.

Our knowledgeable staff is also available to answer your questions through one of the following telephone numbers.

Canada

Monday through Friday, 9:00 a.m. (09:00) to 5:00 p.m. (17:00) Eastern time: 888-827-4877

Australia

Internet: www.targus.com.au

Email: infoaust@targus.com

Monday through Friday, 8:30 a.m. (08:30) to 5:30 p.m. (17:30) Eastern time: 1-800-641-645

Europe

| | | | |
|-------------|----------------------|----------------------------|--------------------|
| Belgium | +32 0 02-717-2451 | Spain | +34 0 91-745-6221 |
| Denmark | +45 0 35-25-8751 | Sweden | +46 0 8-751-4058 |
| France | +33 0 1-64-53-9151 | Switzerland | +41 0 1-212-0007 |
| Germany | +49 0 21-16-579-1151 | United Kingdom | +44 0 20-7744-0330 |
| Italy | +39 0 24-827-1151 | Eastern Europe & others | +31 0 53-484-9479 |
| Netherlands | +31 0 53-484-9470 | | |

Product Registration

For more efficient customer service and to activate the product's warranty, Targus recommends that you register your Targus accessory shortly after purchasing it.

To register your Targus accessory, go to: <http://www.targus.com/registration.asp>

You will need to provide your full name, email address, phone number, and company information (if applicable).

Warranty

Targus warrants this product to be free from defects in materials and workmanship for one year. If your Targus accessory is found to be defective within that time, we will promptly repair or replace it. This warranty does not cover accidental damage, wear and tear, or consequential or incidental loss. Under no conditions is Targus liable for loss of, or damage to, a computer; nor loss of, or damage to, programs, records, or data; nor any consequential or incidental damages, even if Targus has been informed of their possibility. This warranty does not affect your statutory rights.

Warranty Registration at <http://www.targus.com/registration.asp>

Regulatory Compliance

This device complies with Part 15 of the FCC Rules. Operation is subject to the following two conditions: (1) This device may not cause harmful interference, and (2) This device must accept any interference received, including interference that may cause undesired operation.

FCC (Federal Communications Commission)

Declaration of Conformity

This equipment has been tested and found to comply with the limits of a Class B digital device, pursuant to Part 15 of the FCC Rules, and RS 210 Regulations (Canada). These limits are designed to provide reasonable protection against harmful interference in a residential installation. This equipment generates, uses, and can radiate radio frequency energy and if not installed and used in accordance with the instructions, may cause harmful interference to radio communications. However, there is no guarantee that interference will not occur in a particular installation.

If this equipment does cause harmful interference to radio or television reception, which can be determined by turning the equipment off and on, the user is encouraged to try to correct the interference by one or more of the following measures:

- Reorient or relocate the receiving antenna
- Increase the separation between the equipment and receiver
- Move the computer away from the receiver
- Connect the equipment into an outlet on a circuit different from that to which the receiver is connected
- Consult the dealer or an experienced radio technician for help

Intel and Pentium are registered trademarks of Intel Corporation. MS-DOS, Windows and Windows NT are registered trademarks of Microsoft Corporation. Easy CD Creator is a trademark of Roxio, Inc. All other trademarks are the property of their respective owners.

Free Manuals Download Website

<http://myh66.com>

<http://usermanuals.us>

<http://www.somanuals.com>

<http://www.4manuals.cc>

<http://www.manual-lib.com>

<http://www.404manual.com>

<http://www.luxmanual.com>

<http://aubethermostatmanual.com>

Golf course search by state

<http://golfingnear.com>

Email search by domain

<http://emailbydomain.com>

Auto manuals search

<http://auto.somanuals.com>

TV manuals search

<http://tv.somanuals.com>