

How to Connect a Sharp Projector to a Network Quick Reference Guide

Applicable Models: XG-V10WU XG-V10XU
XG-V10WM XG-V10XM

Quick Reference Guide Sections:

- 1.) AN-L10T Installation
- 2.) Projector Configuration
- 3.) S.A.P.S. Configuration

1.) Install Lan Card into expansion slot on A/V connector side of the projector



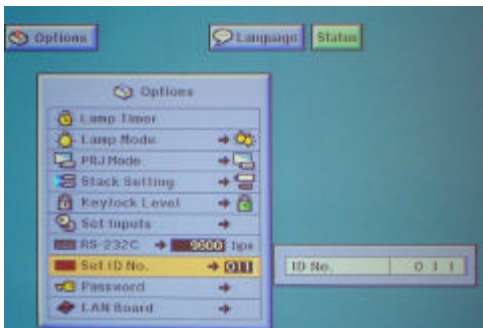
Refer to O/M page numbers 2 - 3 for details

2.) Configure Projector Menu

There are (4) four items to configure on the projector menu.

- A.) Set ID Number
 - B.) Set IP Address
 - C.) Set Gateway
 - D.) Set Subnet Mask
- } **Must be obtained from IT / MIS Department**

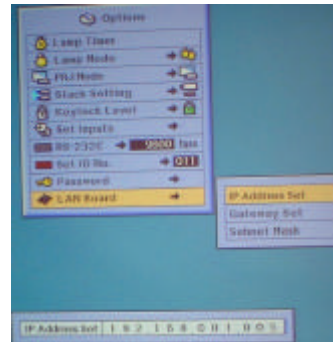
A.) Set ID Number



Refer to Operation Manual - page 4

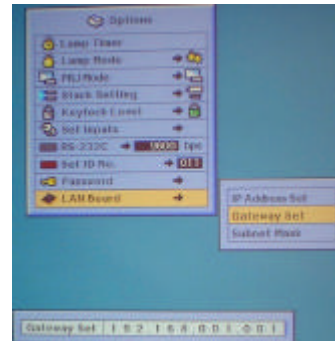
B.) Set IP Address

NOTE: IP Address is Static - verify with IT / MIS Department.



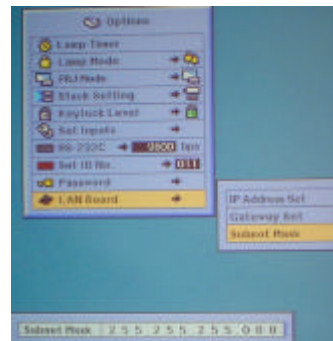
Refer to Operation Manual - page 5

C.) Set Gateway



Refer to Operation Manual - page 6

D.) Set Subnet Mask



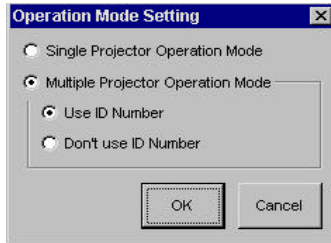
Refer to Operation Manual - page 7

How to Connect a Sharp Projector to a Network

Quick Reference Guide

3.) Configure S.A.P.S.

A.) Select Multiple control setting

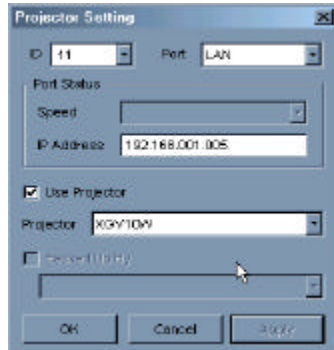


Refer to Operation Manual - page 8

B.) Set the following fields under the projector setting menu

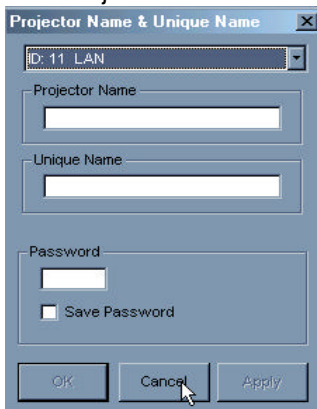
ID #
Port
IP Address

Check use projector



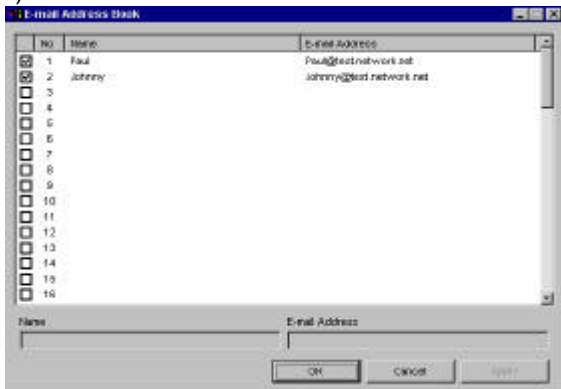
Refer to Operation Manual - page 10 - 11

C.) Set the "Projector Name"



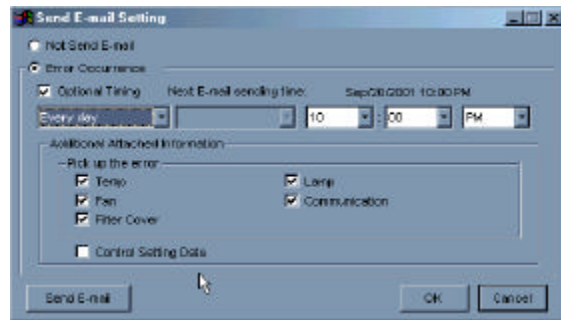
Refer to Operation Manual - page 12

D.) Insert E-Mail Address in E-Mail Address Book



Refer to Operation Manual - page 14

E.) Configure E-Mail Sending Criteria



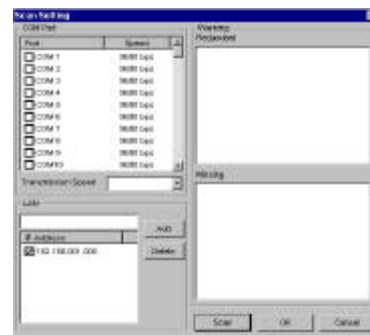
Refer to Operation Manual - page 14

F.) Configure E-Mail Sender Settings Option



Refer to Operation Manual - page 15

G.) Scan for Network Configured Projector



Refer to Operation Manual - page 16

**Any Problems
call 1-888-Go-Sharp
(1-888-467-4277)**

Free Manuals Download Website

<http://myh66.com>

<http://usermanuals.us>

<http://www.somanuals.com>

<http://www.4manuals.cc>

<http://www.manual-lib.com>

<http://www.404manual.com>

<http://www.luxmanual.com>

<http://aubethermostatmanual.com>

Golf course search by state

<http://golfingnear.com>

Email search by domain

<http://emailbydomain.com>

Auto manuals search

<http://auto.somanuals.com>

TV manuals search

<http://tv.somanuals.com>