

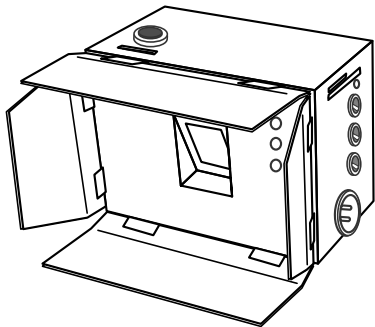
KameSan



KS-1018

Kachinko System (clapperboard)

Operating Manual





The Kamesan Kachinko System is a dual-unit system that solves the problem of video and audio synchronization in a number of different situations. The name comes from the Japanese term for “clapperboard”.

For example, it is now common for the video portion of a broadcast to be sent via satellite, and the audio portion of the broadcast to be sent via landline. The difference in transmission time can lead to serious synchronization problems, and difficulties in providing a properly synchronized program.

With the Kachinko system, it is easy to provide synchronized audio and video cues when recording, and then measure any delay between them at the studio, so that the precise amount of slip can be added to the system for perfect synchronization.

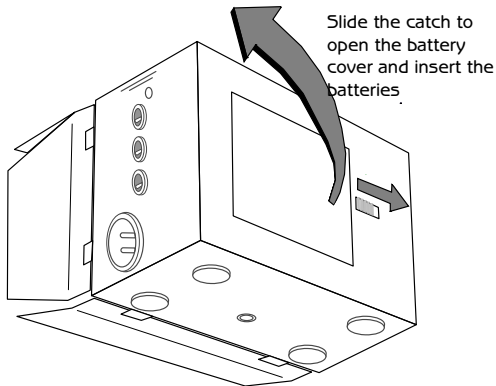
The KS-1018 is the “location” part of the system, and acts as an electronic clapperboard, producing an audio beep which is perfectly synchronized with a visual cue.



The audio beep may be recorded using a microphone, or output at microphone or line level into a mixer.

The beep may be manually triggered, or triggered automatically, with a visual countdown.

Batteries





The KS-1018 uses four 'AA' batteries. The battery cover is located on the rear of the unit.

Slide the catch away from the center in order to unlock the hinged door. Insert the batteries as marked on the inside of the battery compartment.

The normal precautions apply when inserting or replacing batteries into the KS-1018:

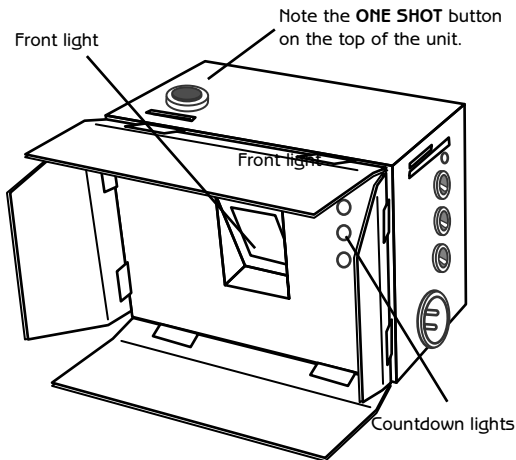
- Take care that the batteries are inserted correctly as shown in the battery compartment, with the polarity correct.
- Never mix batteries of different types, or discarded (or partially-discharged) and new (or freshly-charged) batteries.
- Always follow the battery manufacturer's instructions for charging rechargeable batteries. Never attempt to recharge batteries which are not designed for this purpose.

Close and latch the battery compartment.



A threaded socket on the bottom of the KS-1018 allows it to be used with any standard tripod and shoe system, if desired. Otherwise, standard rubber feet keep the unit steady.

Open the four shutters at the front of the unit before using it, to expose the "clapperboard" front light:





Controls

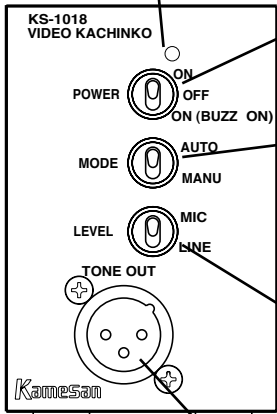
The controls for the unit are located on the

Power indicator; lights when the **POWER** switch is in either of the **ON** positions

POWER switch: three settings: **ON** is on, with no buzzer, **OFF** turns the unit off, and **ON (BUZZ ON)** uses the built-in buzzer

MODE switch: two settings: **AUTO** enables the top **ONE SHOT** button, **MANU** uses the **POWER** switch to produce the clapperboard effect

LEVEL switch: two settings: **MIC** sets a -50 dBm mic level output from the **TONE OUT** XLR jack, **LINE** sets a 0 dBm line level



TONE OUT: balanced transformer XLR audio tone output



right (as you look from the front):

Operation

Locate the unit where the front light is clearly visible by the camera.

- Make any necessary connections from the **tone out** to the camera, if you are not using the camera's microphone.
- If you are recording the signal with the camera microphone, set the **power** switch to **ON (BUZZ)**, otherwise set it to **ON**.
- Set the camera iris setting to manual. An automatic setting can overcompensate for the KS-1018's lighting, and make it impossible to see the "clapperboard" effect on the target monitor.
- Make the image of the front light as large as possible by putting the camera close in front of the KS-1018. The focus of the camera is not important in this case.

Set the **mode** switch to **auto**. The main light lights, and the beep sounds (or the signal is output through the jacks). The three red LEDs

count down and when they reach the end of the sequence, the front light lights, and the beep sounds.

This sequence is repeated as long as the unit is on.

Or, if you set the **MODE** switch to **MANU** (manual), the top **ONE SHOT** button can be used to light the front light and sound the beeper together.

Read the KS-1017 manual for further details of how to measure the delay between the video and audio signals when they are received.

Physical specifications

Dimensions (w x h x d)	125 x 90 x 60 (mm)
	4.9 x 3.5 x 2.4 (in)
Weight	1 kg (2.2lb)

Sigma Systems Engineering Co. Ltd.

3-5-2 Okubo

Shinjuku-ku

Tokyo 169-0072

JAPAN

Tel: +81 3 3204 2611

Fax: +81 3 3204 2250

Free Manuals Download Website

<http://myh66.com>

<http://usermanuals.us>

<http://www.somanuals.com>

<http://www.4manuals.cc>

<http://www.manual-lib.com>

<http://www.404manual.com>

<http://www.luxmanual.com>

<http://aubethermostatmanual.com>

Golf course search by state

<http://golfingnear.com>

Email search by domain

<http://emailbydomain.com>

Auto manuals search

<http://auto.somanuals.com>

TV manuals search

<http://tv.somanuals.com>