

# SIGMA HDTV5 USB V1

## User's Manual

Version 1.0

<b>Notice</b>
---------------

This device has been approved by FCC for a home appliance and is suitable for all residential areas.
--

## Contents

### **Chapter 1. Before getting started**

- 1-1. System requirements
- 1-2. Package contents
- 1-3. Description of each function

### **Chapter 2. Installation**

- 2-1. Before installing the SIGMA HDTV5 USB V1
- 2-2. Connecting the USB cable
- 2-3. Connecting the antenna cable
- 2-4. Connecting the other devices (VCR, Camcorder etc)
- 2-5. Installing the Driver and Program

### **Chapter 3. Using SIGMA HDTV5 USB V1**

- 3-1. Basic function
  - Running the program
  - Setting the input mode
  - Setting the TV channel
- 3-2. Capture function
  - Saving the still image
  - Saving the video
- 3-3. Other functions
  - Reservation function
  - File play mode
  - Time-Shift
  - Menu

### **[Appendix ] Remote control**

# Chapter 1. Before getting started

## 1-1. System requirements

### System configurations

To use SIGMA HDTV USB V1, the following configurations are needed.

### Operating system

- Windows XP (Service pack1 or higher)

### \* Peripherals

- HDD (Ultra DMA 66 or higher)
- Desktop PCs or laptops built-in USB 2.0 port (PCI or PCMCIA USB 2.0 card)
- CD-ROM Drive
- MS compatible mouse
- SoundBlaster compatible sound card

### Recommendations

- CPU Intel Pentium-IV 1.5GB or higher
- MEMORY 256MB or higher
- Graphics card: nVIDIA GeForce4 (except for GeForce4 Ti) and ATi Radeon 7500 or higher

**Note: Graphics card should support DxVA.**

## 1-2. Package contents

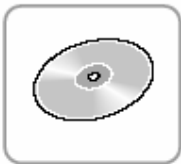
Thank you for purchasing SIGMA HDTV5 USB V1.

Please check the package contents when you remove the box. If you find an omitted item in the package, please visit a near dealer or A/S center for a quick product exchange.



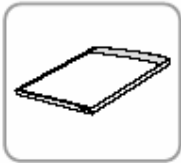
### **SIGMA HDTV5 USB V1**

ATSC broadcast receiver



### **Installation CD**

Used for installing drivers and application programs for SIGMA HDTV5 USB V1



### **User manual**

Used for the installation and usage guide of SIGMA HDTV5 USB V1



### **Remote control (Including battery)**

Used for controlling HDTV broadcast programs



### **USB cable**

Used for connecting SIGMA HDTV5 USB V1 to PC



### **Sound cable**

Used for inputting L/R sounds from external VIDEO devices

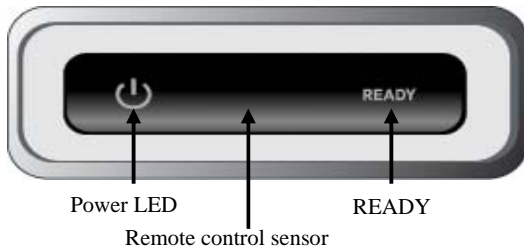


### **Composite conversion cable**

Used for connecting composite of external Video devices

### 1-3. Description of each function

#### Front



#### Power LED

**Receiver of Remote control ( Remote control sensor .)**

**READY :** Status of receiving the digital broadcasts of SIGMA HDTV5 USB V1.

If the broadcast signal is weak, the READY will be ON. (Normal status is OFF)

#### Back



**Antenna In:** Used for receiving HDTV, Analog TV or Cable TV signals

**S-VIDEO In:** Used for receiving S-Video signals from the external devices (VCR, camcorder...)

**AUDIO In:** Used for receiving audio signals from the external devices (VCR, camcorder...)

**USB port:** Used for connecting the SIGMA HDTV5 USB V1 to a PC

## Chapter 2. Installation

### 2-1. Before installing the SIGMA HDTV5 USB V1

We recommend you to refer to the following checkpoints for your system.

**1. SIGMA HDTV5 USB V1 has been designed to work with a USB 2.0 supported PC.**

Therefore we suggest you to check your main-board of the PC whether it supports the USB 2.0 high speed bandwidth or not. If your PC does not support USB2.0, you need to buy a PCI USB2.0 add-in card for USB 2.0 interface.

**2. Make sure that you have plugged into the right USB 2.0 port of your PC.**

Your motherboard may have several USB ports for 1.1 and 2.0.

Normally USB ports can not be distinguished.

**3. Make sure that your PC has a DXVA supported graphics card.**

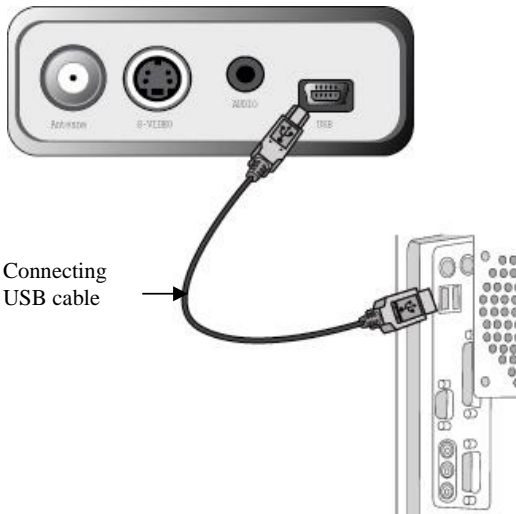
Without this acceleration technology, HDTV broadcasts are not worked correctly because its decoding process requires a huge processing power. Generally NVIDIA Geforce MX440 and ATI Redeon 7200 are the minimum requirement therefore you need to have higher spec. of the graphics card at least.

**4. Make sure that your OS(operating system) is MS Windows XP(service pack 1 or higher)**

SIGMA HDTV5 USB V1 is suitable for Microsoft Windows XP OS, service pack 1 or higher. Lower OS versions such as Windows98, Windows2000 and Windows ME may cause a serious system conflict.

## 2-2. Connecting the USB cable

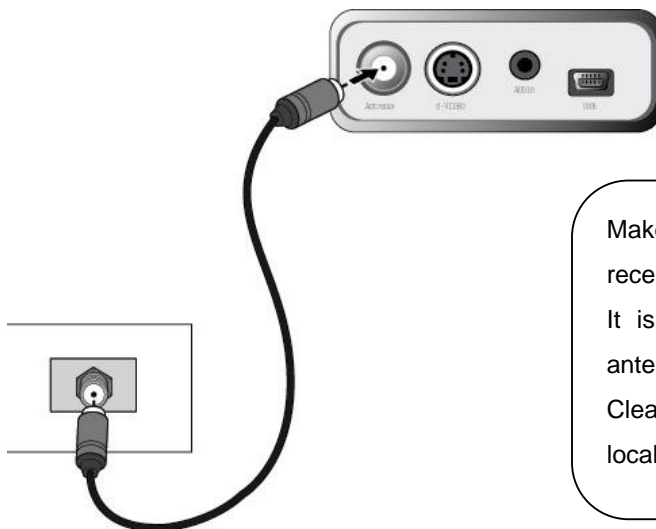
1. Connect the USB cable to the USB port of SIGMA HDTV5 USB V1
2. Connect the other side of the USB cable to the USB port of your system as drawn below.



**Note:** Make sure that your system supports USB2.0 interface before the connection

## 2-3. Connecting the antenna cable

To receive the over-the-air digital broadcasts, connect an indoor or outdoor antenna (UHF) cable as drawn below.



Make sure that you are in a digital TV reception area to receive the over-the-air digital TV signals.

It is important that you need to have a good UHF antenna for a better digital TV reception.

Clear QAM support may be different according to your local DTV service providers

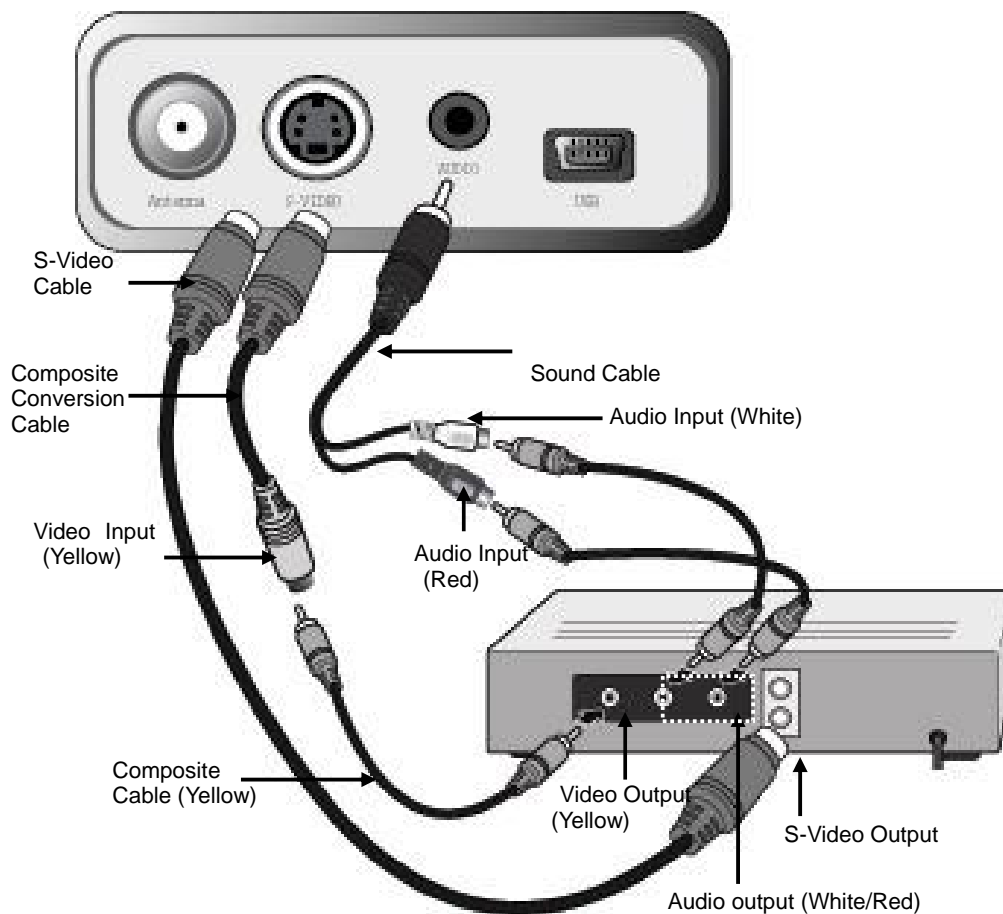
## 2-4. Connecting other devices (VCR, Camcorder etc.)

### . Video connection

1. Connect S-Video output (black) of an external video device to S-Video input of SIGMA HDTV5 USB V1 with the S-Video cable.
2. Connect Composite output of an external video device to Composite input of SIGMA HDTV5 USB V1 with the composite conversion cable.

### . Audio connection

1. Connect SIGMA HDTV5 USB V1 to an external Video device with the sound cable as drawn below



### [Note]

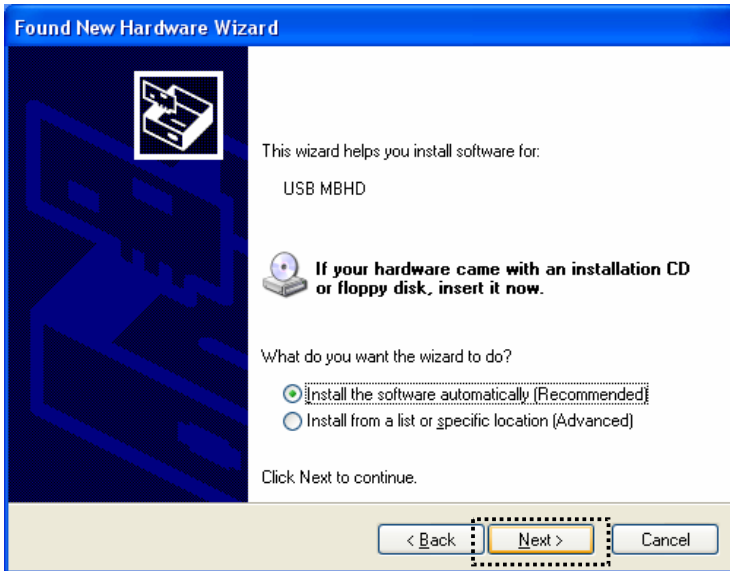
Make sure that you should select one connection only from S-VIDEO or Composite.

## 2-5. Installing the Driver and Program

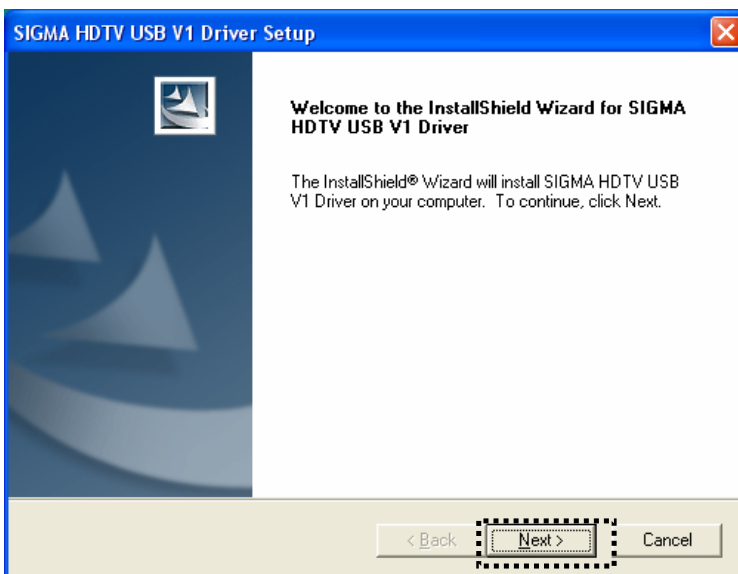


## . Driver Installation

1. Insert SIGMA HDTV5 USB V1 into your CD-ROM drive.
2. When connecting the SIGMA HDTV5 USB V1 to your system, the following dialog box appears.  
“Found New Hardware wizard” then click [Cancel]”



3. Run 'SETUP.EXE' in 'Driver' folder of in your CD-ROM drive.
4. SIGMA HDTV USB V1 driver setup window appears then click [Next].

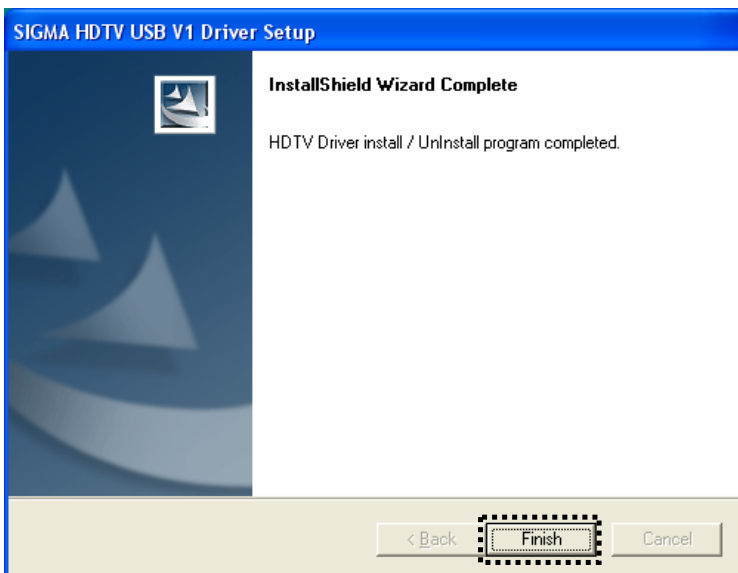


5. While SIGMA HDTV USB V1 driver files being copied, “SIGMA HDTV5 USB V1 driver has not passed

Windows Logo testing to verify its compatibility with Windows XP" appears then click [Continue Anyway].



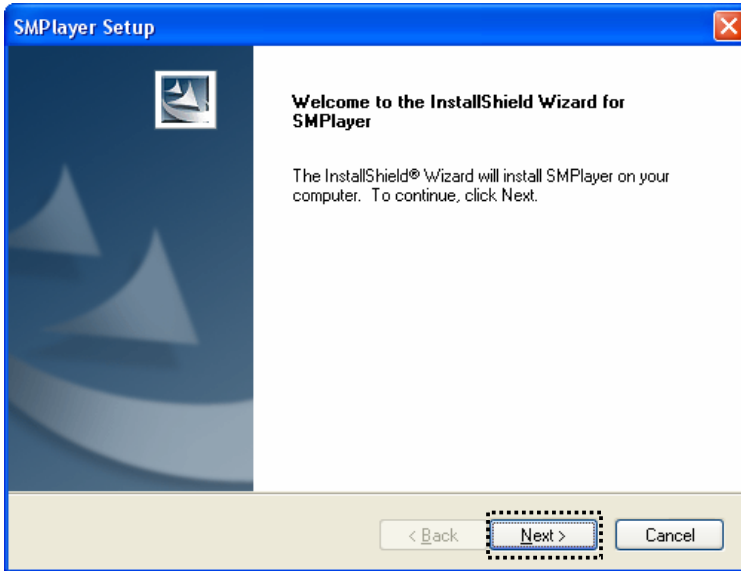
6. After being completed installation, click the [Finish].



. Program installation

1. Run 'SETUP.EXE' in your CD-ROM Drive.

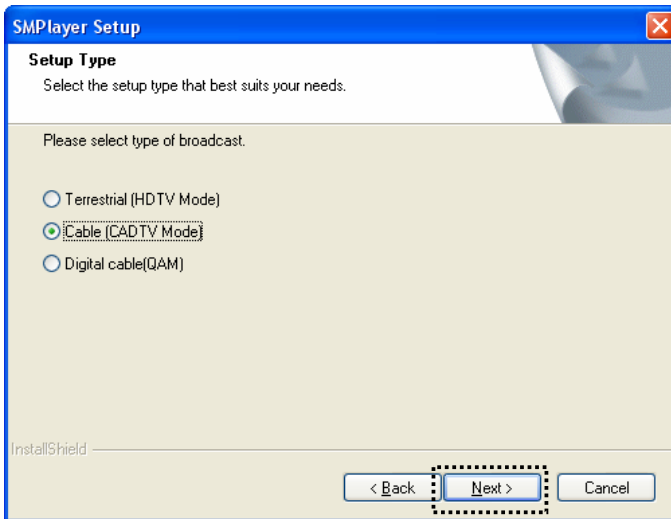
2. SMPlayer Setup window appears then click [Next].



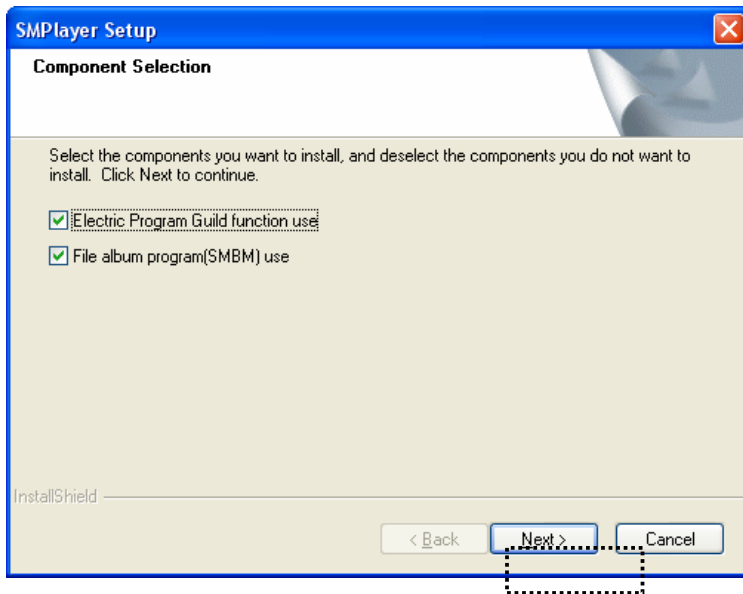
3. Installation directory appears then click [Next].

If you want to change the Installation directory, click "Searching" to set your directory

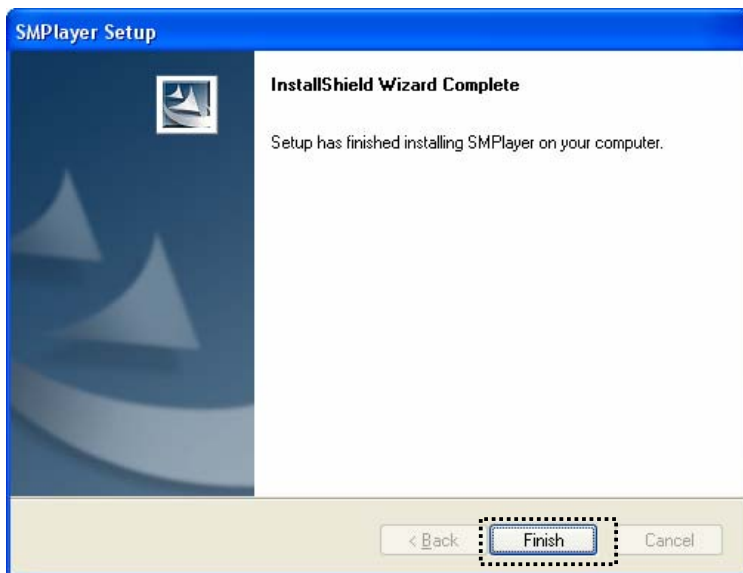
4. SMPlayer Setup window appears then select a type of broadcast reception.



5. After being copied, you are requested to select functions then click [Next].



6. After being completed program installation, click [Finish].




## Chapter 3. Using SIGMA HDTV5 USB V1

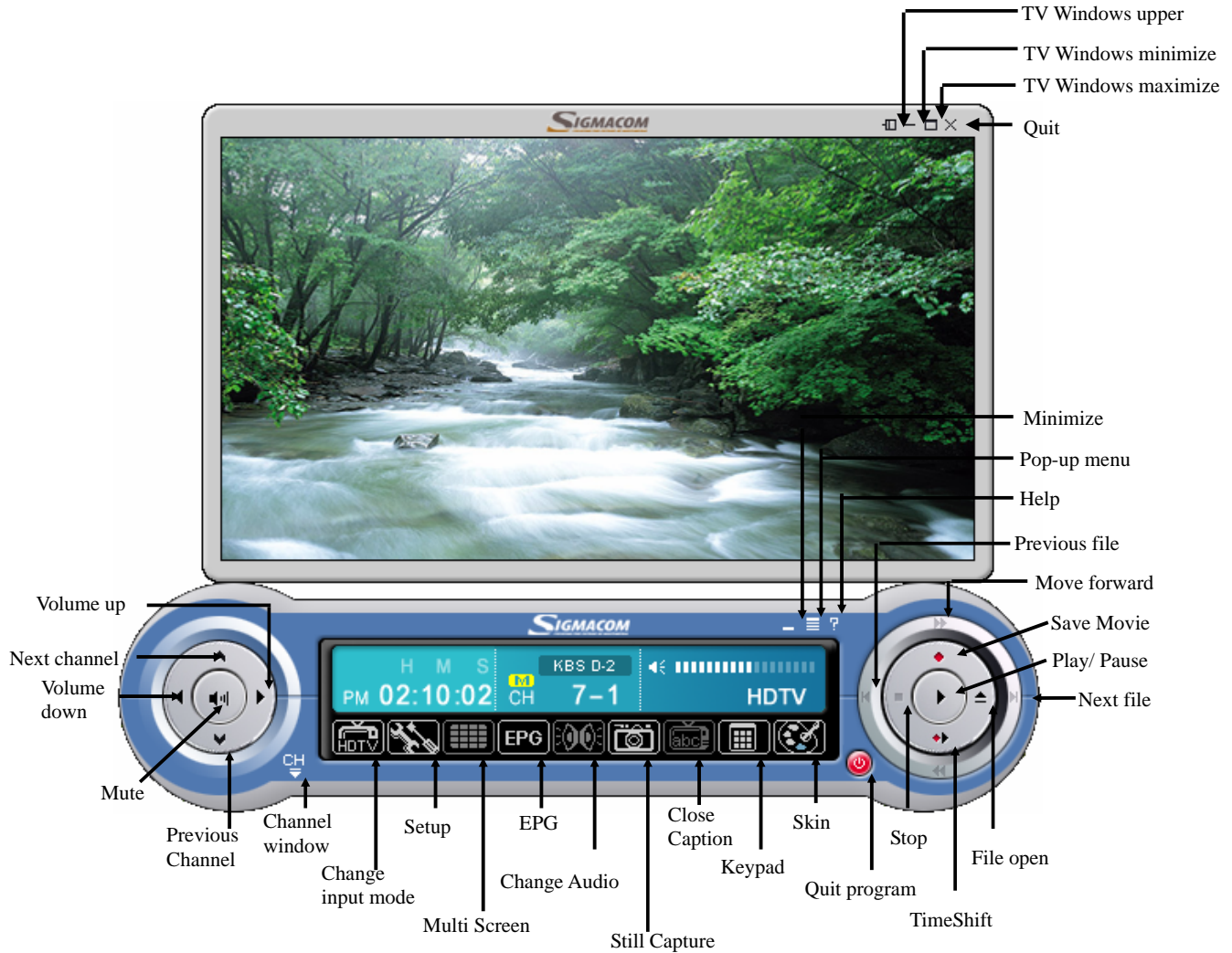
### 3-1. Basic funtion

SMPlayer is a TV viewing tool for your favorable digital TV programs.

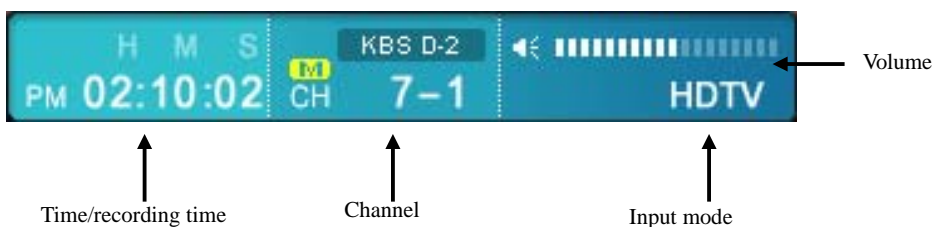
In case of connecting to an external video device, you can also enjoy a video in the SMPlayer

#### Running the program

Double-click [  ] in the Windows, a TV window appears as drawn below.




#### . Status bar



### Setting the input mode

This function is to set an input mode (HDTV/CADTV/TV/CATV/VIDEO/SVHS/FILE/DV/DVHS) in SMPlayer.

Click  in the main panel then the panel will be changed to the selectable input mode.



### . Details for each input mode

**HDTV:** HDTV mode

**CADTV:** Digital cable TV mode.

(QAM mode needs to be set separately.)

**TV:** Analog TV mode

**CATV:** Analog cable TV mode

**VIDEO:** Composite input mode

**SVHS:** S-VHS input mode

**FILE:** File play mode (\*.TRP, \*.MPG, \*.AVI, \*.WMV).

**DV :** Digital Video input mode(digital camcorder)

**D-VHS:** D-VHS input mode (D-VHS player)

### [NOTE]

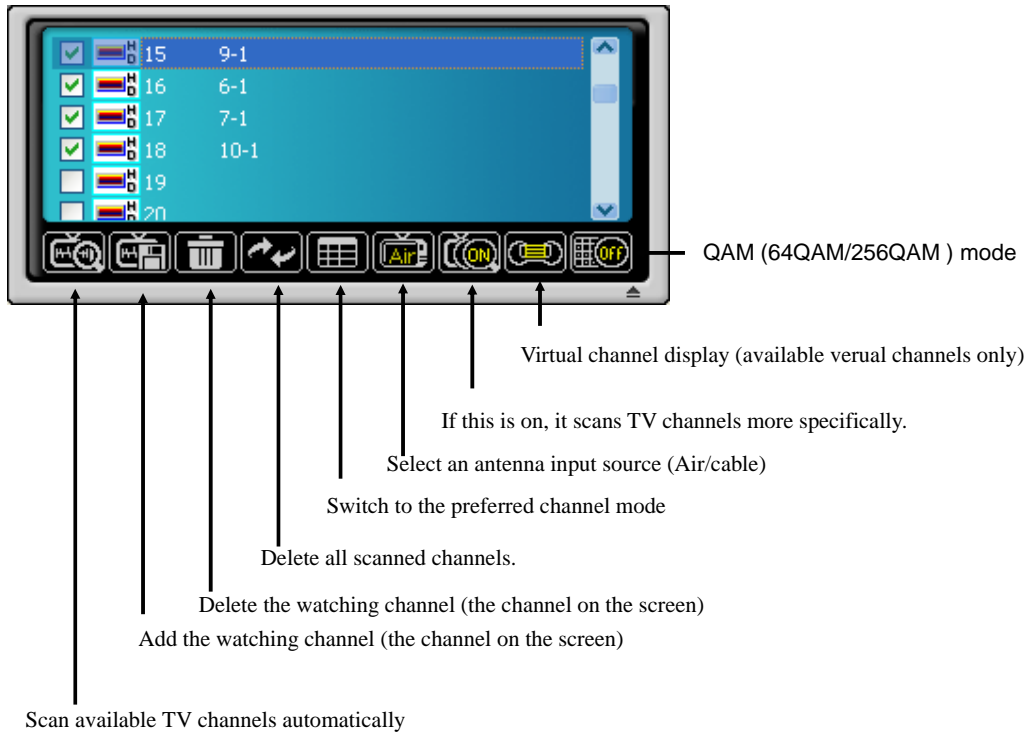
To use VIDEO, SVHS or DVHS mode, appropriate external device should be connected to the SIGMA HDTV5 USB V1.

### Setting the TV channel

### Channel window (Channel memory/ delete)

This function is to scan, save or delete all available TV channels from the over the air or digital cable.

The channel window appears if you click [CH] in the main panel.



### [NOTE]


- . Run "Auto TV channel searching" to scan all available TV channels for the first time.
- . Virtual channel means the sub-channel (for example: 9-1, 9-2) to manage every channels effectively transmitted from a broadcast service provider
- . [Antenna Icon] and [QAM Icon] are supported only in Digital TV mode (HDTV/CADTV).

## 3-2. Capture function

### Saving the still image

This function is to save a motion video into a still image

#### . How to save the still image

Click  in the panel, the screen is saved as a file



(When the file is saved, the file name is shown on the screen)

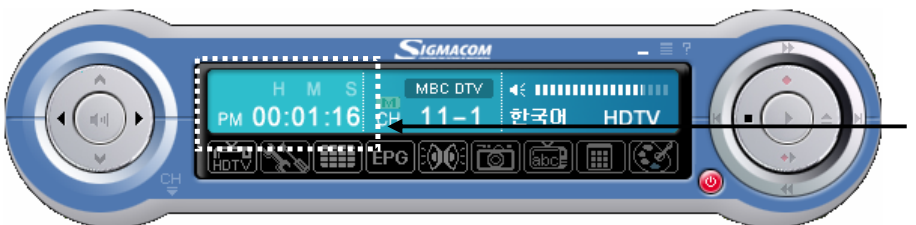


### Saving the video

This function is to save a video into a motion video file

#### How to save the video

Click  to save and  to stop.




The recording status is displayed

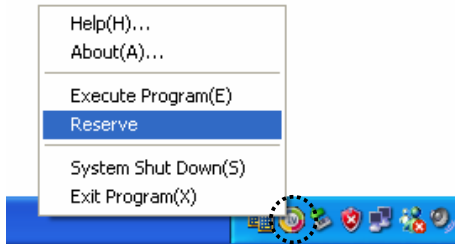


### 3-3. Other functions

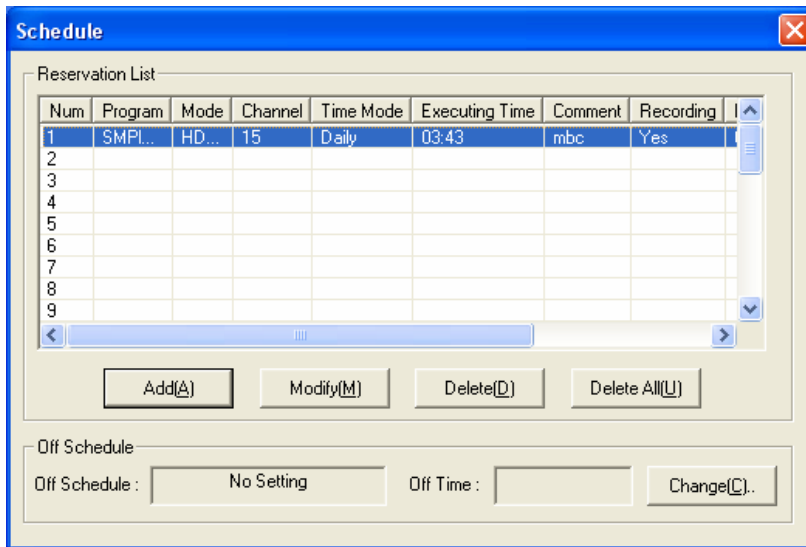
#### Reservation function

This function is to reserve or record a TV program as pre-scheduled.

Click [] on the tray bar then select the 'Reserve' as drawn below.



Schedule window appears. Select "Add," "Modify," "Delete" or "Delete All" in the reservation list.



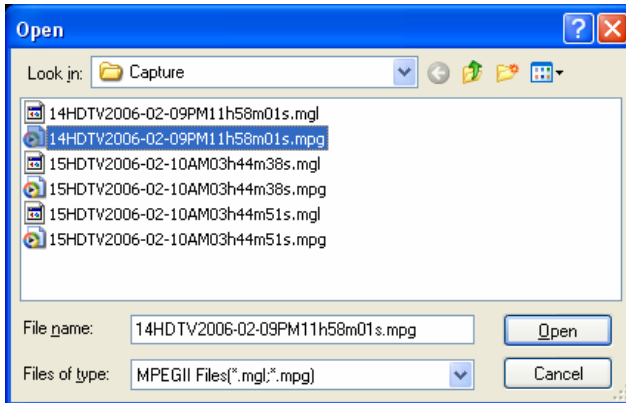
#### [NOTE]

. To record a TV program while watching, "Recording" should be marked in "Add."

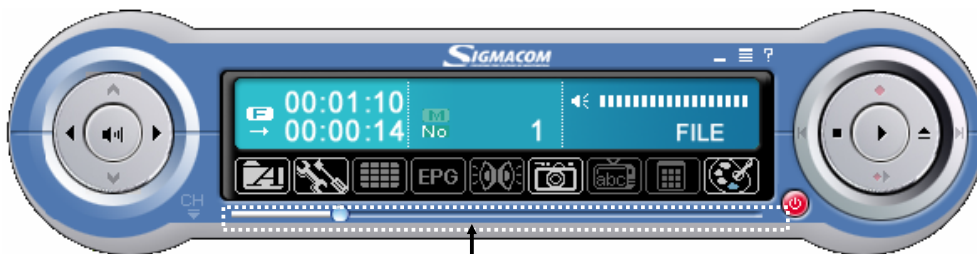
## File play mode

This mode is to play a video file that saved in your system

1. Click [⏪] or [📁] to find a video file you want.
2. "Open" window appears then choose a file and click [Open].



3. The video file will be loaded in the TV window automatically. While playing the video file, you can easily control it by using buttons(play,pause,file open) and slide bar.



You can drag the play position of the video file.

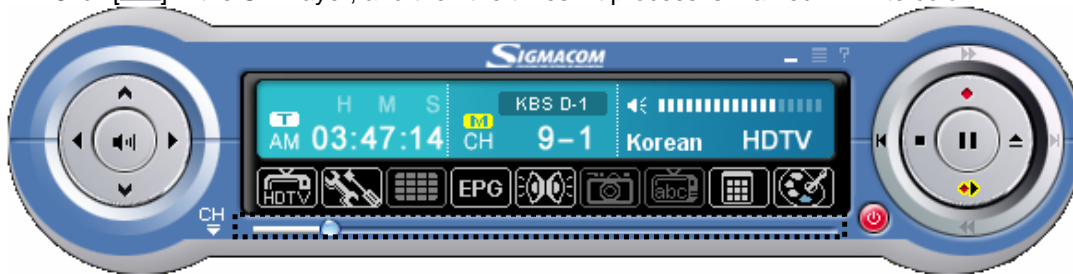
### . Functions of the control buttons

- [⏪] : Play the previously captured file.
- [⏩] : Play the next captured file.
- [▶] : Play.
- [■] : Stop
- [📁] : Open the file list

## Time -Shift

This allows you to pause a live broadcast and return to it or moments and continue exactly where you left off. The live broadcast is saved in HDD space as much as its available free space. Therefore, you are able to watch and enjoy your favorite TV show like your VCR tape.

1. Click [▶] in the SMPlayer, and then the timeshift process is marked in white color. .



2. Click [■] to stop the timeshift function.

## Moving the play position

You can move the play position by mouse click.




Click the play position to move.

## [NOTE]

- . Time-Shift function is only supported in Digital TV mode (HDTV/CADTV)
- . If the Time-shift function does not work, check if DxVA mode has been enabled in 'Option → Configuration.'

## Menu

This is a menu set for SMPlayer program.

Click 'Menu'  in the panel or right mouse button in the window..

Always Top Window(T)	Ctrl+T
✓ Show Window Frame(F)	Ctrl+F
Window Ratio(G)	Shift+W ▶
Aspect Ratio Mode(E)	Shift+A ▶
DeskTop(D)	Ctrl+D
Arrange Window Position(I)	Ctrl+I
Sleep(Z)	Ctrl+Z ▶
<hr/>	
Still Capture(Q)	F9
Record(R)	Ctrl+F9
<hr/>	
Channel Window(C)	Ctrl+C
MultiScreen(V)	Ctrl+V
<hr/>	
Option(O)	Alt+O ▶
Save Configuration(P)	Alt+B ▶
Remocon Option	Ctrl+Alt+O
OSD Configuration(N)...	
<hr/>	
File Control(M)	▶
Subtitle	▶
<hr/>	
✓ DeInterlace Mode(L)	Ctrl+L
SNR(S)	Alt+N
Closed Caption(J)	Shift+C
Previous Channel(B)	B
Favorite Channel(K)	K
BookMark(Y)	Ctrl+Y
Set Priority(U)	▶
<hr/>	
Help(H)...	F1
About(A)...	
Exit Program(X)	Alt+F4

### Always Top Window

Set the TV screen always on top.

### Show Window frame

Show or hides the TV window frame

### Window ratio

Select a display mode (full, wide, standard)

### Aspect ratio mode

Set the aspect ratio of TV screen (16:9 / 4:3 / 1:1)

### Desktop

Watch the background window as the TV screen.

### Arrange Window position

Arrange the TV screen size and position by resolutions.

### Sleep

Set or release the sleep function

### Still capture

Save as a still image.

### Record

Save as a video file

### Channel Window

Show or hide the Channel window that can be memorized or deleted.

### Multi Screen

The TV screen is divided into multi screen and shows in serial.

### Option

Set the configuration such as volume, screen resolution and sub-channel.

**Save configuration**

Show the configuration to save video or still image.

**Remocon option**

Remote control icon should be activated on the tray.

**OSD configuration**

Set the color or size of OSD.

OSD stands for On Screen Display.

**File control**

Whenever pressing Hot key(Ctrl+L/R), the play position is moved as set in the menu.

(This function can be used in File mode only.)

**Subtitle**

Set a subtitle supported by a video file.

**Deinterlace mode**

Remove image ghost or noise in a fast action scene.

**SNR**

Show the DTV signal strength.

**Closed caption**

Show closed caption on the screen

**Previous channel**

Move to the previous channel.

**Favorite channel**

Show your favorite channels.

**Bookmark**

Play a saved video file as album or file unit

**Set the priority**

Set the priority of SMPlayer program.

## Help

Online help guide of SMPlayer program.

## About

Show the version, manufacturer and program info.

## Exit program

Quit the SMPlayer program.

# Appendix. Remote Control

## Replacing batteries

- Use a 3 V lithium battery for the replacement. Basically, the battery is provided when you purchase SIGMA HDTV5 USB V1.

1. Pull down the battery tray of the remote control.
2. Insert a 3V lithium battery into the tray as drawn below.



3. Push the battery tray back into the remote control then fix it sounded "clicking".

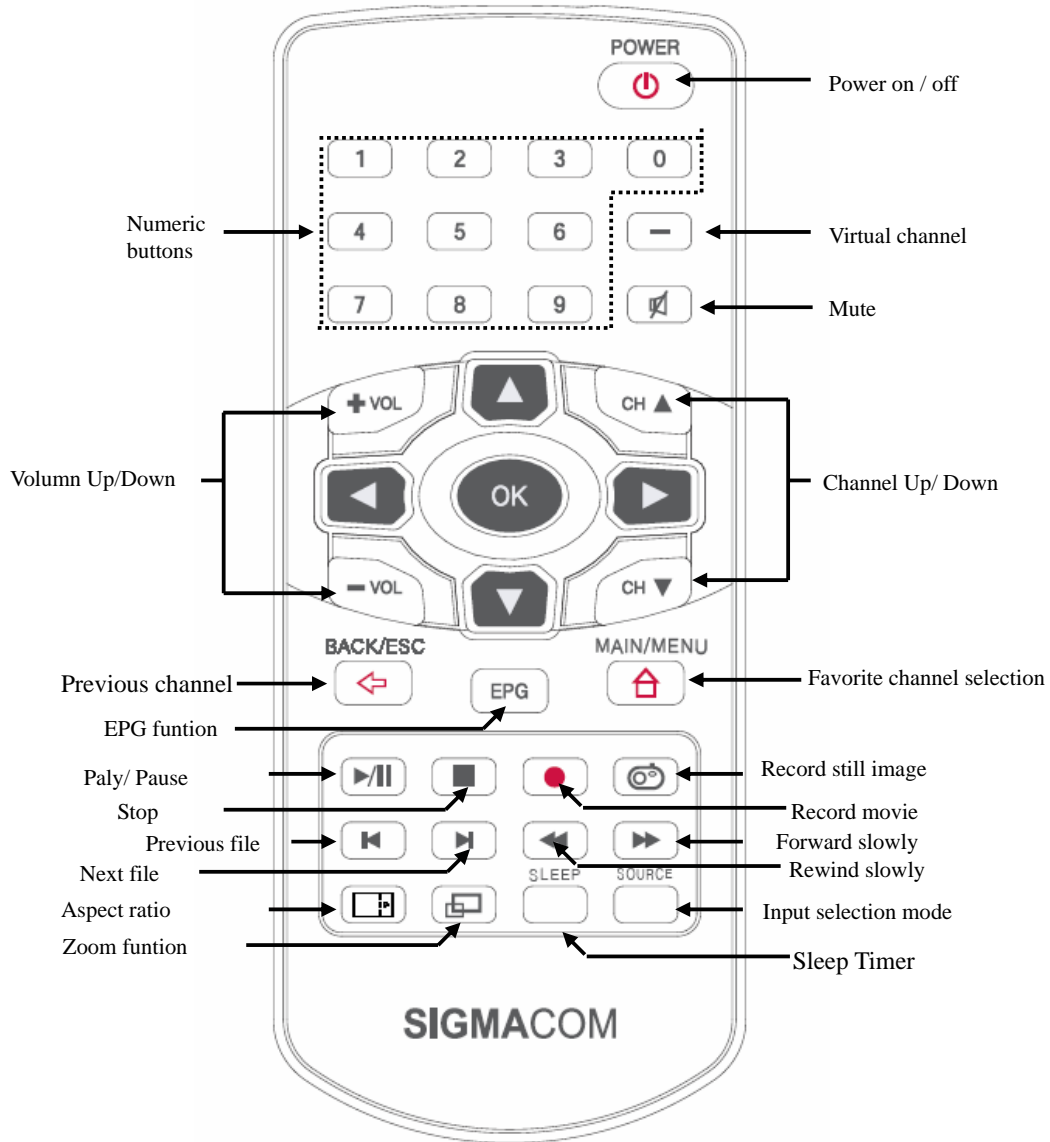


## [NOTE]

You can check whether it is worked or not by pressing the buttons of the remote control.

The red lamp on the remote control will be on if the battery is inserted correctly.

## Descriptions of the remote control



## Free Manuals Download Website

<http://myh66.com>

<http://usermanuals.us>

<http://www.somanuals.com>

<http://www.4manuals.cc>

<http://www.manual-lib.com>

<http://www.404manual.com>

<http://www.luxmanual.com>

<http://aubethermostatmanual.com>

Golf course search by state

<http://golfingnear.com>

Email search by domain

<http://emailbydomain.com>

Auto manuals search

<http://auto.somanuals.com>

TV manuals search

<http://tv.somanuals.com>