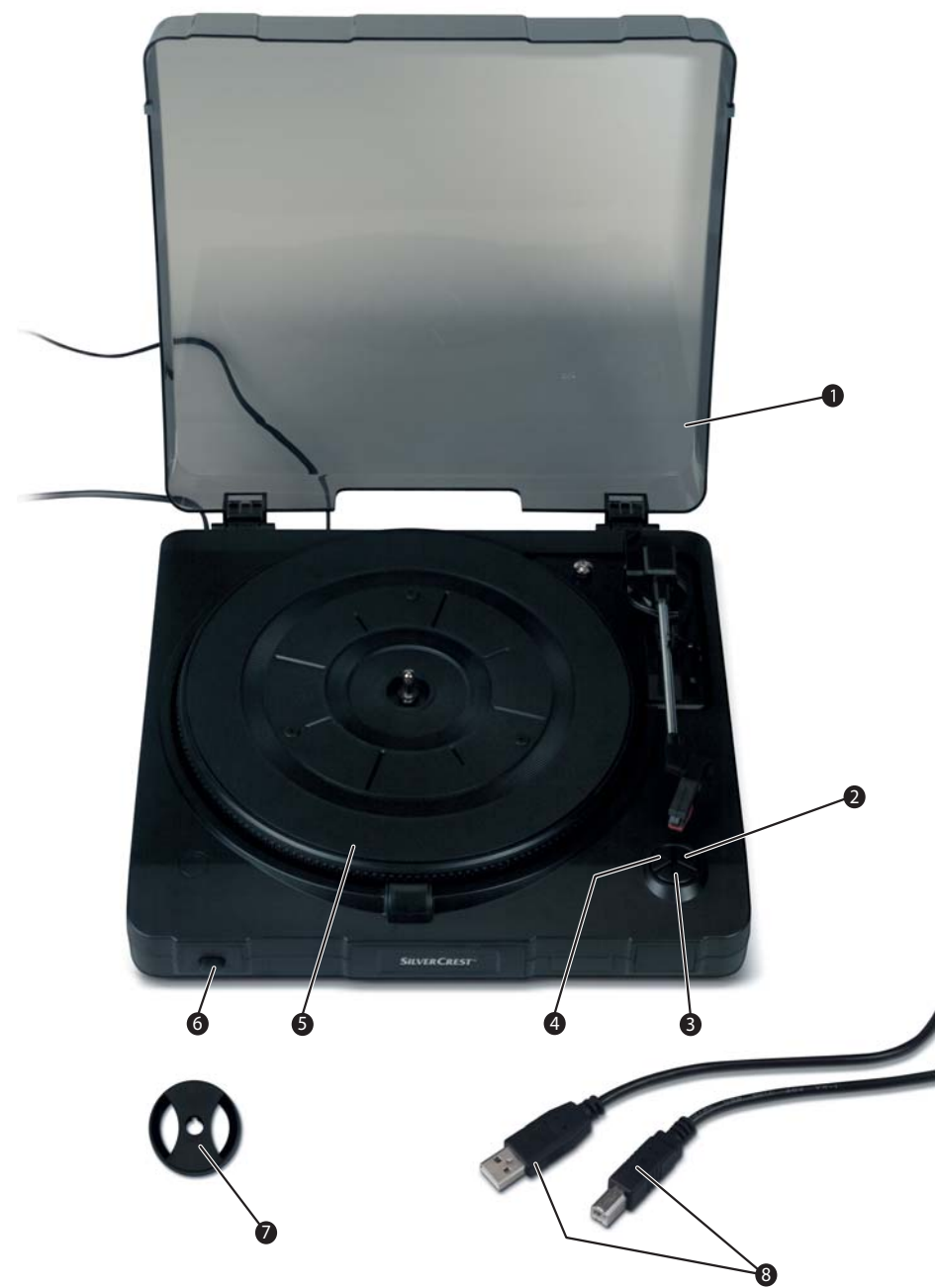


■ USB RECORD PLAYER



KH 2430

GB **USB RECORD PLAYER**  
IE Operating instructions  
CY



GB Operating instructions..... 5



# Index

**Introduction .....6**  
 Preface ..... 6  
 Information for these operating instructions ..... 6  
 Copyright ..... 6  
 Limited liability ..... 7  
 Warnings ..... 7  
 Proper use ..... 8

**Safety .....9**  
 Danger from electric current ..... 9  
 Basic Safety Instructions ..... 10

**Setting up and connecting .. 11**  
 to the power supply ..... 11  
 Safety instructions ..... 11  
 Package contents and transportation inspection ..... 11  
 Disposal of packaging ..... 12  
 Requirements for the setup location ..... 12  
 Before initial use ..... 13  
 Electrical connection ..... 13  
 Connection to an external amplifier ..... 13  
 Connection to a computer ..... 14  
 Installation and configuration of the Programme Audacity ..... 14

**Operating components (see fold out sides) ..... 19**  
 Audacity programme ..... 20

**Service and operation .....21**  
 Switching the device on and off... 21  
 Starting the Audacity programme . 21  
 Starting playback of records ..... 21  
 Operation during playback ..... 22  
 Setting recording level ..... 22  
 Recording with the Audacity programme ..... 23  
 Exporting recordings ..... 24

**Maintenance .....26**  
 Removing the cartridge and needle ..... 26  
 Installing a new needle ..... 26

**Cleaning .....27**  
 Safety instructions ..... 27  
 Cleaning ..... 27

**Troubleshooting .....27**  
 Safety instructions ..... 27  
 Malfunction causes and remedies . 28

**Storage/Disposal .....29**  
 Storage ..... 29  
 Disposing of the device ..... 29

**Appendix .....30**  
 Technical data ..... 30  
 Notes on the EG conformity declaration ..... 31  
 Warranty ..... 31  
 Importer ..... 31

## **Introduction**

### **Preface**

Dear customer,

by purchasing the record turntable KH 2430 you have decided on a quality product from **SilverCrest** which, in terms of technology and functionality, meets the most up-to-date development standards.

Read the information included here so that you can quickly familiarize yourself with your device and thus make full use of its functions.

We wish you a great deal of enjoyable use.

### **Information for these operating instructions**

These operating instructions are a component of the record turntable KH 2430 (henceforth designated as the device) and supplies you with important information for intended use, safety, installation and connection as well as operation of the device.

The operating instructions must be constantly kept available close to the device. They are to be read and used by anyone assigned to install, service and repair faults in the device.

Keep these operating instructions and hand them over with the device to any future owners.

### **Copyright**

This documentation is copyright protected.

Any duplication and/or reprinting, entirely or partially, as well as reproduction of illustrations, also in modified form, is only permitted with written consent from the manufacturer.

## Limited liability

All technical information, data and information for installation, connection and operation contained in these operating instructions correspond to the latest at time of printing and, to the best of our knowledge, take into account our previous experience and know-how.

No claims can be derived from the details, illustrations and descriptions in these instructions.

The manufacturer assumes no responsibility for damage caused by failure to observe the instructions, improper use, inappropriate repairs, making unauthorized changes or for using unapproved replacement parts.

## Warnings

In the present operation instructions the following warnings are used:

### **DANGER**

**A warning of this danger level signifies a life threatening dangerous situation.**

If the dangerous situation is not avoided it can lead to serious injury or death.

- ▶ The directives in this warning are there in order to avoid serious personal injuries or death.

### **WARNING**

**A warning of this danger level signifies a possible dangerous situation.**

If the dangerous situation is not avoided it can lead to injuries.

- ▶ The directives in this warning are there in order to avoid personal injuries.

**IMPORTANT**

**A warning of this danger level signifies possible property damage.**

If the situation is not avoided it can lead to property damage.

- ▶ The directives in this warning are there in order to avoid property damage.

**NOTE**

- ▶ A note signifies additional information that assists in the handling of the device.

## Proper use

This device is intended for the playback of records only. In addition you can connect the device to a computer that makes recordings of records and saves these as files in various formats.

This device is not intended for any other use or for uses beyond those mentioned.

** WARNING****Danger from unintended use!**

Danger can arise from the device if used for unintended purposes and/or other types of use.

- ▶ Use the device exclusively for intended purposes.
- ▶ Observe the procedures described in these operating instructions.

Claims of any kind for damage resulting from unintended use will not be accepted.

The operator alone bears liability.

## Safety

In this chapter you receive important safety information regarding handling of the device.

This device complies with the statutory safety regulations. Incorrect usage can, however, lead to personal injury and property damage.

### Danger from electric current

#### **DANGER**

##### **Danger to life from electrical current!**

##### **Danger to life exists from contact with live electrical wires or components!**

Observe the following safety information in order to avoid the danger of electric shock:

- ▶ Do not use the device if the power cable or the power plug is damaged.
- ▶ Before using the device again have a new connection cable installed by an authorized specialist.
- ▶ Under no circumstances open the device's casing. The risk of electric shock exists from touching voltage carrying connections and changing the electrical/mechanical construction.

## Basic Safety Instructions

For safe handling of the device observe the following safety information:

- Before use check the device for externally visible damage. Do not operate a damaged device or one that has been dropped.
- If the cable or connections are damaged have them exchanged by an authorized specialist or the customer service department.
- Persons who, due to their physical, intellectual or motor abilities, are incapable of operating the device safely may only use the device under supervision or direction from a responsible person.
- Only permit children to use the device under supervision.
- Repairs should only be carried out by authorized specialist companies or by the customer service department. Incorrect repairs can result in significant dangers for the user. In addition warranty claims become invalid.
- A repair to the device during the warranty period may only be carried out by a customer service department authorized by the manufacturer otherwise no additional warranty claims can be considered for subsequent damage.
- Defective components may only be replaced with original replacement parts. Only by using original replacement parts can you guarantee that the safety requirements are complied with.
- Protect the device from moisture and liquid penetration.
- Always pull the cord from the mains power by the plug and not by the cable.
- Do not carry the device by the connection cable.
- Do not allow the connection cable to hang down. The danger exists of pulling the device down by the cable.
- Avoid direct sunlight.
- Do not use the device in the vicinity of open flames.
- In the case of malfunctions and during thunderstorms pull the power plug out of the mains power socket.
- Do not spray and/or drip water on the device and do not place any object filled with liquid, such as vases or open drink containers, on or near the device.



## Setting up and connecting to the power supply

### Safety instructions

#### **WARNING**

#### **When operating the device personal injury and property damage can occur!**

To avoid danger observe the following safety instructions:

- ▶ Packaging materials may not be used as playthings. There is a risk of suffocation!
- ▶ Observe the information regarding the setup location requirements as well as the device's electrical connection to avoid personal injury and property damage.

### Package contents and transportation inspection

The device is delivered with the following components as standard:

- Record turntable
- USB connection cable
- Adapter for single records (45's)
- Audacity programme CD
- Operating instructions

#### **NOTE**

- ▶ Check the contents to make sure everything is there and for visible damage.
- ▶ If the contents are not complete or are damaged due to defective packaging or through transportation contact the service hotline (see warranty card).

## Disposal of packaging

The packaging protects the device from transport damages. The packaging materials are selected from the point of view of their environmental friendliness and disposal technology and are therefore recyclable.



The recirculation of packaging into the material circuit saves on raw material and reduces generated waste. Dispose of packaging material that is no longer needed according to the regionally established regulations.

### NOTE

- ▶ If possible preserve the device's original packaging during the warranty period so that, in the event of a warranty claim, you can package the device properly for return.

## Requirements for the setup location

For safe and trouble free operation of the device the setup location must fulfill the following provisions:

- The device must be placed on a firm, flat and level base.
- Do not place the device in a hot, wet or very damp environment or in the vicinity of flammable materials.
- Do not remove the device's feet. Otherwise proper air circulation can not be guaranteed.
- The mains power socket must be easily accessible so that the power cable can be easily disconnected in an emergency.
- The surface areas of furniture may possibly contain components that could affect the device's rubber feet, softening them. If necessary place a base under the device's feet.
- Operating temperature range: +5 to +40 °C
- Humidity (no condensation): 5 - 90 %

## Before initial use

The following transportation protections are attached to the device:

- Plastic band for holding down the pick-up arm
  - Transport screw ⑨ for securing the turntable
  - Protective cover for the needle
  - Styrofoam blocks
  - Information sheet for the turntable
- Remove all packaging material and all transport protection from the device.
  - Release the turntable's transport protection by tightening the transport screw ⑨.

## Electrical connection

Observe the following electrical connection for safe and failure free operation of the device:

- Before connecting the device compare the connection data (voltage and frequency) with that on the rating plate of your electric supply. This data must agree in order to avoid damaging the device.
- Make sure that the power cable is not damaged and is not laying over hot surfaces and/or sharp edges.
- The connection cable must not be stretched tight.

## Connection to an external amplifier

- ◆ Connect both cinch plugs of the LINE-OUT connection cable ⑩ to the AUX input of an external amplifier. For this follow the operating instructions for the external amplifier.

## Connection to a computer

### System prerequisites

- ◆ You will need a computer with a vacant USB port and with either Windows® XP or Windows® Vista operating system from Microsoft®.

### Connection

- ◆ Connect the USB cable to the USB port 15 and to a USB port on your computer. The device will be automatically recognized by the operating system and all necessary drivers will be installed.

#### NOTE

- ▶ If you connect the device to another USB port the drivers will be installed again.

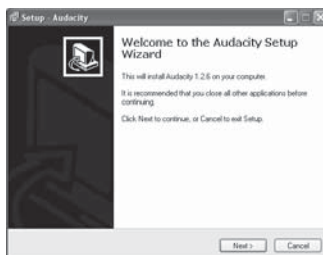
## Installation and configuration of the Programme Audacity

#### NOTE

- ▶ In these operating instructions only the settings and programme components are described that you will need for recording and converting your records. Further information can be found on the internet under the address **<http://audacity.sourceforge.net>**.
- ▶ The illustrations are applicable to the operating system Microsoft® Windows® XP. The screen image can differ, depending on the display settings, with other operating systems.

## Installation

- ◆ Place the supplied Audacity programme CD in your computer's CD drive. The installation will begin automatically and the window "Setup - Audacity" is shown.
- ◆ Click on the button "Next >".

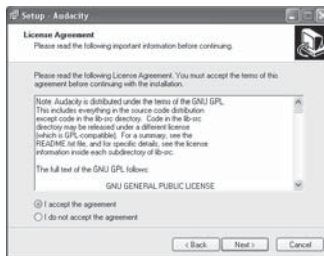


**NOTE**

- ▶ If you have switched off the auto start function and the installation process does not start automatically you can start the installation process by double clicking on the file "audacity-win-1.2.6.exe" in the directory "Audacity\_for\_WIN".

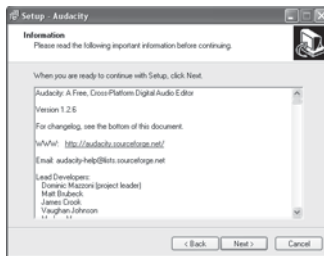
The window "License Agreement" is shown.

- ◆ Select "I accept the agreement" and click on the button "Next >".



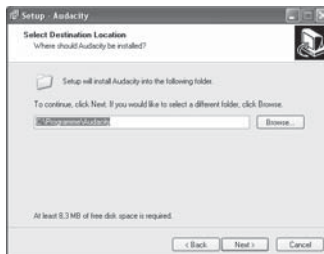
The window "Information" is shown.

- ◆ Click on the button "Next >".



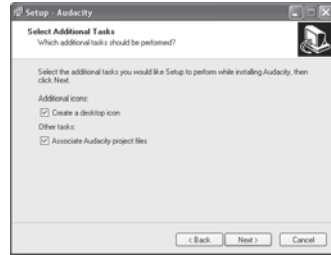
The window for the selection of installation directory is shown.

- ◆ Select the desired installation directory and click on the button "Next >".



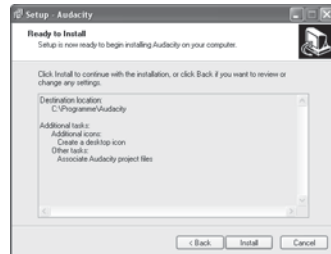
The window for the selection of further installation options is shown.

- ◆ Select the desired options and click on the button "Next >".

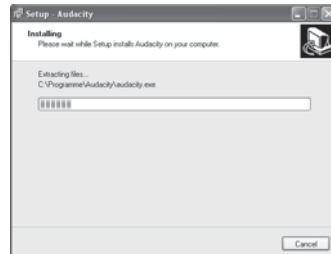


All installation settings are shown.

- ◆ Click on the button "Install".

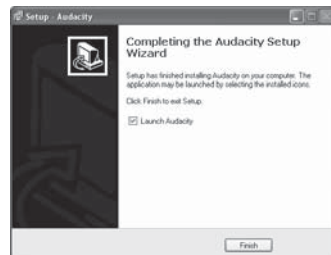


The programme will now be installed.  
The installation progress is shown.



Then is shown that the installation has been completed successfully.

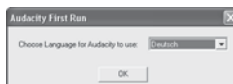
- ◆ Click on the button "Next >". If the option "Launch Audacity" is selected the programme will start.



## Configuration

- ◆ Copy the file "lame\_enc.dll" from the directory "Audacity\_for\_WIN" on the Audacity programme CD to your computer's hard drive, i.e. to the Audacity installation directory.
- ◆ You start the Audacity programme by double clicking on the programme icon on the desktop or by selecting the corresponding input from the start menu.

When the programme starts for the first time after installation you will be asked to select the language.

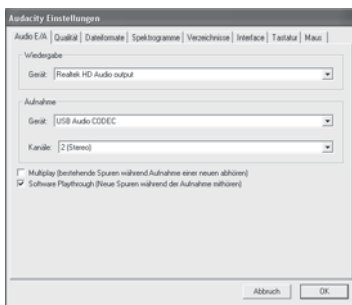


- ◆ Select the desired language and click on the button "OK".

### NOTE

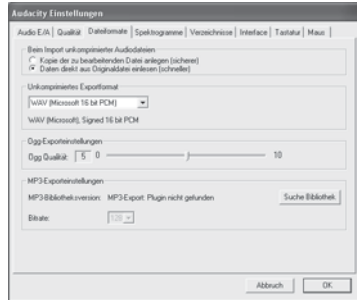
► The language setting can be changed any time at a later date in the programme settings.

- ◆ Select the menu option "Settings" in the "Process" menu.
- ◆ Select the tab "Audio E/A".
- ◆ Carry out the following settings in the section "Record":
  - Device: "USB Audio CODEC"
  - Channels: "2 (Stereo)"
- ◆ Select the option "Listen to new tracks during playback" if the record is to be played back simultaneously when recording.



The option "USB Audio CODEC" is only available if you have correctly connected the turntable before the programme starts.

- ◆ Select the tab "File format".
- ◆ Click on the button "Search library".

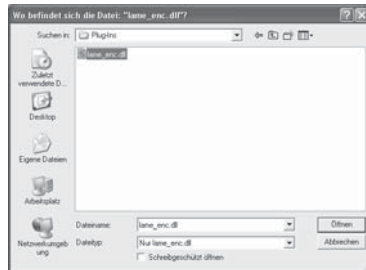


An information window will be shown.

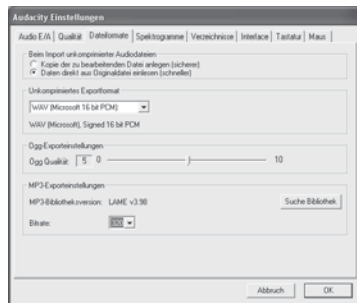
- ◆ Click on the button "Yes".



- ◆ Select the directory in which the file "lame\_enc.dll" is located.
- ◆ Select the file and click on the button "Open".



- ◆ Select the bitrate for the MP3 files.
- ◆ Click on the button "OK" to finalise the setting.



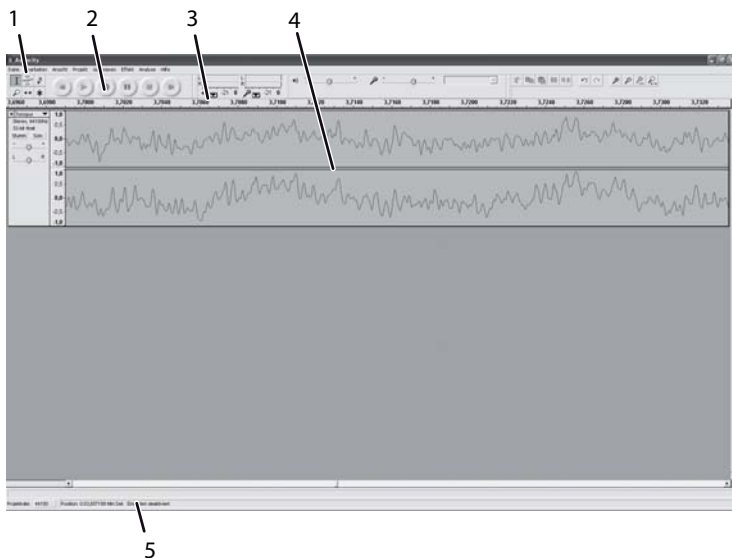


## Operating components (see fold out sides)

- ① Dust cover
- ② **Stop playback** button
- ③ **End playback** button
- ④ **Continue playback** button
- ⑤ Turntable
- ⑥ **POWER** switch: Device on/off switch
- ⑦ Adapter for single records (45's)
- ⑧ USB connection cable
- ⑨ Transport securing screw/Turntable adjustment  
Transport position: Screw loosened  
Operating position: Screw tightened to end stop.
- ⑩ Pick-up arm security lever
- ⑪ Pick-up arm elevating lever
- ⑫ Turntable speed selection switch: 33 1/3, 45 or 78 Rev/min
- ⑬ Pick-up arm
- ⑭ Needle with cartridge
- ⑮ USB port
- ⑯ LINE-OUT connection cable for connection of an amplifier (Cinch)
- ⑰ Mains power connection cable

GB

**Audacity programme**



- 1 Menu bar
- 2 Tool bars
- 3 Time indicators
- 4 Project zones (Recordings will be filed as sound tracks)
- 5 Status bar

## Service and operation

In this chapter you will receive important information for the service and operation of the device.

### Switching the device on and off

- ◆ To switch the device on activate the switch **POWER** ⑥.
- ◆ To switch the device off activate the switch **POWER** ⑥ again.

### Starting the Audacity programme

- ◆ You start the Audacity programme by double clicking on the programme icon on the desktop or by selecting the corresponding input from the start menu.

### Starting playback of records

- ◆ Open the dust cover ①.
- ◆ Place the record onto the turntable ⑤.

#### NOTE

- ▶ For playing records with a large centre hole (Singles) you use the adapter ⑦.

- ◆ With the Turntable speed selection switch ⑫ set the required speed.
- ◆ Release the security lever ⑩ from the pick-up arm ⑬.
- ◆ Move the pick-up arm lever ⑪ to the rear position to raise the pick-up arm.
- ◆ Swing the pick-up arm to the desired position.
- ◆ Move the pick-up arm lever ⑪ to the forward position to lower the pick-up arm and to place the needle ⑭ onto the record.

#### NOTE

- ▶ After the end of the recording is reached the pick-up arm will return automatically to its starting position.

## Operation during playback

- ◆ To stop playback press the button **Stop playback** ②. The turntable stops and the pick-up arm remains in its current position.

### IMPORTANT

#### Possible damage to the record or the needle.

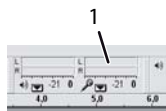
If playback is stopped when the needle is still on the record it can lead to damage.

- ▶ Move the pick-up arm lever ① to the rear position before pressing the **Stop playback** ② button.
- ◆ To continue after stopping playback press the button **Continue playback** ④ and move the pick-up arm lever ① to the forward position.
- ◆ To end playback press the button **End playback** ③. The turntable stops and the pick-up arm ① returns to its starting position.


## Setting recording level

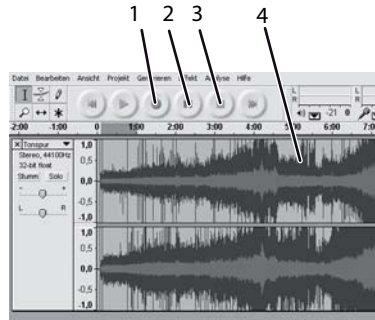
### NOTE



- ▶ The recording level setting is not possible with all operating systems.
- ◆ In the operating systems mixer settings set the recording level so that in the drive indicator (1) -6dB is not exceeded.



## Recording with the Audacity programme

- ◆ Start the Audacity programme.
- ◆ Start the record playback
- ◆ Click on the button  (1). Recording will begin.



- ◆ To stop the recording click on the button  (2). To continue the recording click again on the button (2).
- ◆ To end the recording click on the button  (3). The sound track (4) contains the recorded data.
- ◆ If the sound, during the recording, is to be played back simultaneously via a speaker connected to the computer select "Listen to input signal" in the menu underneath the drive indicator.
- ◆ Select this menu option again to switch playback off.



## Exporting recordings

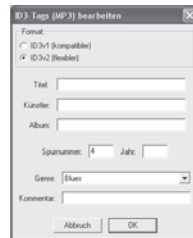
You can save your recordings in 3 different file formats.

### Exporting the entire recording as one file

- ◆ Select one of the following menu options in the "File" menu to export the recording in the corresponding file format:
  - "Export as WAV...", (normal audio)
  - "Export as MP3...", (compressed audio)
  - "Export as Ogg...", (compressed and lossless audio)
- ◆ Select the target directory and enter a file name then click on the button "Save". When exporting as WAV or Ogg files the files will be saved.

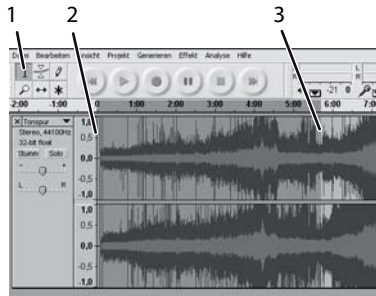
When exporting as MP3 files the window "ID3 tags (MP3) process" is shown. Here you can enter information which will be saved in the ID3 tag in the MP3 file. An entry is not absolutely necessary.

- ◆ Click on the button "OK". The MP3 file is saved.



### Dividing a recording into individual files

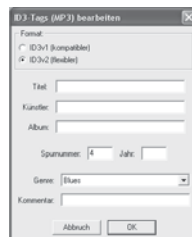
- ◆ Activate the selection work tool (1).
- ◆ Move the cursor within the sound track to the beginning of the sector that is to be exported.
- ◆ Press the left mouse button and hold it down.



- ◆ Drag the cursor, with the left mouse button held down, to the end of the sector (3) that is to be exported and then release the mouse button. The sector is now tagged.
- ◆ Select one of the following menu options in the "File" menu to export the recording in the corresponding file format:
  - "Select export as WAV...",
  - "Select export as MP3...",
  - "Select export as Ogg...",
- ◆ Select the target directory enter a file name and then click on the button "Save". When exporting as WAV or Ogg files the files will be saved.

When exporting as MP3 files the window "ID3 tags (MP3) process" is shown. Here you can enter information which will be saved in the ID3 tag in the MP3 file. An entry is not absolutely necessary.

- ◆ Click on the button "OK". The MP3 file is saved.



- ◆ Repeat these individual operations to export further sectors of the recording as files.

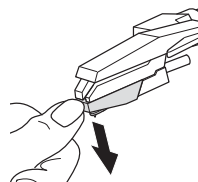
## NOTE

- ▶ The window for entering information for the ID3 tag of the MP3 file appears only with the first export. For all other sectors the data that you have entered for the first export will be applied.

## Maintenance

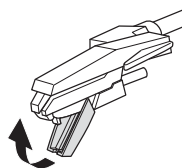
### Removing the cartridge and needle

- ◆ Release the lock on the tip of the cartridge 14.
- ◆ Release the lock on the rear side and remove the needle complete with cartridge.



### Installing a new needle

- ◆ Insert the new needle cartridge so that the locking hooks clip into the recesses in the pick-up arm 13.
- ◆ Press the cartridge upwards until it locks into place.



#### IMPORTANT

##### **Possible needle damage.**

The needle can be damaged when inserting.

- ▶ Make sure, during installation, that you do not touch the needle.



## Cleaning

### Safety instructions

#### IMPORTANT

##### **Possible damage to the device.**

Penetrating moisture can lead to damaging of the device.

- ▶ Make sure, when cleaning, that no moisture penetrates the device to avoid irreparable damage to the device.

## Cleaning

- Clean the casing exclusively with a slightly damp cloth and a mild dish washing liquid.

## Troubleshooting

In this chapter you receive important information for malfunction localization and malfunction remedies. To avoid danger and damage observe the safety information.

### Safety instructions

#### **WARNING**

To avoid danger and property damage observe the following safety instructions:

- ▶ Repairs to electric devices may only be carried out by specialists taught by the manufacturer. Through improper repairs considerable danger for the user and damage to the device can occur.

## Malfunction causes and remedies

The following chart will assist with the localizing and remedy of minor malfunctions:

Defect	Possible cause	Solution
The turntable ⑤ does not turn, in spite of the fact that the pick-up arm ⑬ is located in the playback position.	The device is not switched on.	Switch the device on.
	The mains plug is not inserted.	Insert the mains plug into the wall socket.
	The wall socket is not supplying power.	Check the house fuse.
	The button " <b>Stop playback</b> " ② is pressed down.	Press the button " <b>Continue playback</b> " ④
<b>USB Audio CODEC</b> can not be set as recording source.	The USB cable ⑧ is not connected correctly.	Check the USB cable connection.
No sound can be received with the Audacity programme.	Recording source is incorrectly set.	Set <b>USB Audio CODEC</b> as recording source.
Poor sound quality, strong noise, sound blackout	Needle ⑭ is worn out.	Replace the needle.
	Interaction between Line-out and USB cable.	Make sure that the Line-out cable ⑯ is connected correctly and/or that the two plugs are not touching.

Defect	Possible cause	Solution
Pick-up arm <b>13</b> jumps, slips or does not move forward.	The device is not standing level.	Stand the device on a level base.
Sound does not playback during recording.	Incorrect programme settings.	Activate the option "Listen to new tracks during playback" and select "Listen to input signal" in the "Drive indicator input" menu.
	A speaker is not connected to the computer or is not switched on.	Check the speaker.

**NOTE**

- If the problem can not be resolved with the steps already mentioned please contact the customer service department..

## Storage/Disposal

### Storage

Pull out the mains power plug if you are not using the device for an extended period of time.

Store the device in a dry environment.

Protect the needle with the protective cap.

Close the dust cover after use.

### Disposing of the device



**Do not, under any circumstances, discard the device in the household refuse. This product falls under the European directive 2002/96/EC WEEE (Waste Electrical and Electronic Equipment).**

Dispose of the device through an approved disposal centre or at your community waste facility. Observe the currently applicable regulations. In case of doubt, please contact your waste disposal centre.

## Appendix

### Technical data

<b>General</b>		
Input voltage	230	V~
Power frequency	50	Hz
Power consumption	5	W
Operating temperature	+5 - +40	°C
Humidity (no condensation)	5 - 90	%
Dimensions (L x W x H)	356 x 348 x 109	mm
Weight	approx. 2,45	kg

<b>Motor and turntable</b>		
Motor	Direct current-Servomotor	
Drive system	Belt drive	
Speeds	33 1/3, 45, 78	Rev/min
Flutter	less than 25% (WRMS)	
Signal to noise ratio	more than 30	dB
Needle	402-M208-165	

## Notes on the EG conformity declaration

This device complies in regard to conformity with the fundamental requirements and other relevant regulations of the low voltage directive 2006/95/EC and the directive for electromagnetic compatibility 2004/108/EC.



The complete original conformity declaration can be obtained from the importer.

## Warranty

The warranty for this device is for 3 years from the date of purchase. Should you have grounds for complaint, despite our high quality standards, please contact our Service Hotline. In the event that your complaint cannot be resolved over the telephone, you will receive from them

- a processing number (RMA number)

as well as

- an address to which you can send your device for repair under warranty.

In the case of a mail-in shipment please enclose a copy of the purchase receipt (sales slip). The device must be securely packed and the RMA number clearly visible. Shipments without an RMA number cannot be processed.

### NOTE

- ▶ The warranty is valid only for material or manufacturing defects. The warranty provisions do not cover
  - parts subject to wear and tear
  - damage to fragile parts such as switches

This product is for private use only and is not intended for commercial use. The warranty is void in the case of abusive and improper handling, use of force and internal tampering not carried out by our authorized service branch. Your statutory warranty claims are not restricted by this warranty.

## Importer

KOMPERNASS GMBH  
BURGSTRASSE 21  
44867 BOCHUM, GERMANY  
[www.kompernass.com](http://www.kompernass.com)



## USB Record Player KH 2430

**In order to guarantee a cost free repair procedure please get in touch with the service hotline. Make sure you have your sales slip handy.**

Sender, please write clearly:

Last name \_\_\_\_\_

First name \_\_\_\_\_

Street \_\_\_\_\_

City/Town \_\_\_\_\_

Country \_\_\_\_\_

Telephone \_\_\_\_\_

Date/Signature \_\_\_\_\_

**GB DES Ltd**

Tel.: 0870/787-6177

Fax: 0870/787-6168

e-mail: support.uk@kompernass.com

**IE Kompernass Service Ireland**

Tel.: 1850 930 412 (0,082 EUR/Min.)

Standard call rates apply. Mobile operators may vary.

e-mail: support.ie@kompernass.com

### Description of the defect:

---

---

---

---

---

---

---

---

---

---

Fill in this section and submit it with the device!



## Free Manuals Download Website

<http://myh66.com>

<http://usermanuals.us>

<http://www.somanuals.com>

<http://www.4manuals.cc>

<http://www.manual-lib.com>

<http://www.404manual.com>

<http://www.luxmanual.com>

<http://aubethermostatmanual.com>

Golf course search by state

<http://golfingnear.com>

Email search by domain

<http://emailbydomain.com>

Auto manuals search

<http://auto.somanuals.com>

TV manuals search

<http://tv.somanuals.com>