



Nucleus

Reason Profile User Guide

Nucleus. This is SSL.

Solid State Logic
S O U N D | | V I S I O N

December 2011 Document History
Initial Release

Nucleus Daw Control - Default Reason Profile

Main Soft Key Page

The Reason Soft Key set contains 14 MCU commands together with 2 USB keyboard short cuts, Edit and Tools, to switch Menu displays.



Above you can see the assignments for the Nucleus' Left Hand Soft keys.

NM/VAL (NAME/VALUE) flips the lower row of the channel encoder displays to show the names of the Reason parameters controlled by the faders instead of the name of the Reason Device assigned to the faders (with the exception of the 14:2 mixer where the channel (fader) labels are displayed in the upper row and the function of the encoder is shown in the lower row when NM/VAL is active). The UP/DOWN cursor keys select next/previous track in the Reason Sequencer, which automatically assign the track's instrument/device to the faders and encoders. The encoder parameter name is only displayed when the encoder is turned. The FLIP command interchanges the fader and encoder parameters and displays the names if NM/VAL has been selected.

AReset activates the Reset Automation Override function.

Pan, Aux 1, Aux 2, Treble Bass and FxRet

assign the named mixer function to the channel encoders when a 14:2 Mixer is the target track device. When Malström is the target track device, Aux 1 and Aux 2 toggle the channel controls between Oscillator A + Modulator A and Oscillator B + Modulator B.

SOLO acts as Solo ON/OFF for the target track

MUTE acts as Mute ON/OFF for the target track

EDIT switches the Sequencer to Edit Mode on the target track

NoFlip cancels the FLIP status (operating the FLIP key a second time will not cancel the FLIP function) and is illuminated when FLIP is not active.

SOLO-X cancels all active track Solos.

MUTE-X cancels all active track Mutes.

Toggle Rotates the Reason Rack (Front/Rear).

Redo everses a change caused by the UNDO function. It illuminates whenever there is a valid REDO option.

USING THE REASON 6 MIXER

Reason 6 adds a more comprehensive mixer than the standard 14:2 previously used.

To control the Reason 6 mixer with the Nucleus, the 1st thing you need to do is right click on the master section in the rack view and select 'create track for master section'.

With this new track selected in sequencer, the Nucleus faders now control the Reason mixer's faders, and you can bank left and right to access all available tracks.

The VPots can control many different things depending on what mode they are in, which is set by the buttons above the left hand display.

Working through the options from left to right:

With the Instrument button selected, the VPots 1-8 control the FX Returns 1-8 levels and VPots 9-16 control FX Returns 1-8 Pans.

With the Plugin button selected VPots 1-5 control the master compressor, VPots 9-12 control the master inserts, and VPots 14-16 control the Control Room section.

With the EQ button selected the Vpots control the channel input gain, which if you then hit a channel select button, VPots 1-8 toggle to controlling the selected channel's dynamic section.

With the Pan button selected the VPots control Pan, which if you then hit a channel select button, VPots 1-8 toggle to controlling the selected channel's filters, rotaries, width and pan.

With the Send button selected the VPots control FX1 send level, which if you then hit a channel select button, VPots 1-16 toggle to controlling the selected channel's FX sends, Rotaries, width and Pan.

With the Track button selected the VPots control FX2 send level, which if you then hit a channel select button, VPots toggle to controlling the selected channel's Filters and EQ.

Once you get used to this control methodology, it becomes very quick and easy to control the entire Reason 6 mixer, toggling between seeing one parameter for ever channel (e.g. Pan) to having total control of an entire mixer section for the selected channel, (e.g. EQ).

Hopefully this makes sense, and should increase your enjoyment of Nucleus within the Reason environment even more.

Once you have mastered controlling the mixer, if you want to get really advanced it is also possible to set up 2 Nucleus layers to both control Reason simultaneously. Then, by using surface locking, DAW layer 1 can be set to always control the Reason mixer and DAW layer 2 can be used to control the rest of the rack, edit all your devices etc...

Nucleus' User definition and Reason's creative habitat make for a powerful combination.

TRANSPORT/UTILITY KEYS



Below is a list of DAW commands supported by Reason:

DAW CMND	SOFTKEY LABEL	REASON FUNCTION	NOTES
Keyboard ID	KeybdID	N/A	Identifies Keyboard
Aux1	Aux1	Aux Send 1 on 14:2	
Pan	Pan	Pan on 14:2	
Treble	Treble	Treble EQ on 14:2	
Aux2	Aux2	Aux Send 2 on 14:2	
FX Rtn	FX Ret	FX Return 1-4 on 14:2	
Flip	Flip	FLIP	Intercancels with UNFLIP
No Flip	NoFlip	UNFLIP	Intercancels with FLIP
Name/Value	NM/VAL	Name/Value	Shows function/Value
Bass	Bass	Bass EQ on the 14:2	
SMPTE/Beats	SMPTE	N/A	
Busses	Busses	Accesses Busses	
Outputs	Outpts	Accesses Outputs	
User	User		
Shift	Shift		
Option	Option		
Control	Ctrl		
Alt	Alt		
Reset Automation	AReset	Resets Automation	
Undo	Undo	Undo	
Mute Off	MuteX	Turns Mutes Off	
Solo Off	SoloX	Turns Solos Off	
Redo	Redo	Redo	
Track Mute	Mute	Mute Selected	
Track Solo	Solo	Solo Selected	
Goto L	Goto L	Locates to L	
Goto R	Goto R	Locates to R	
Cycle	Cycle	Cycle	
Drop	Drop		
Replace	Rplace		

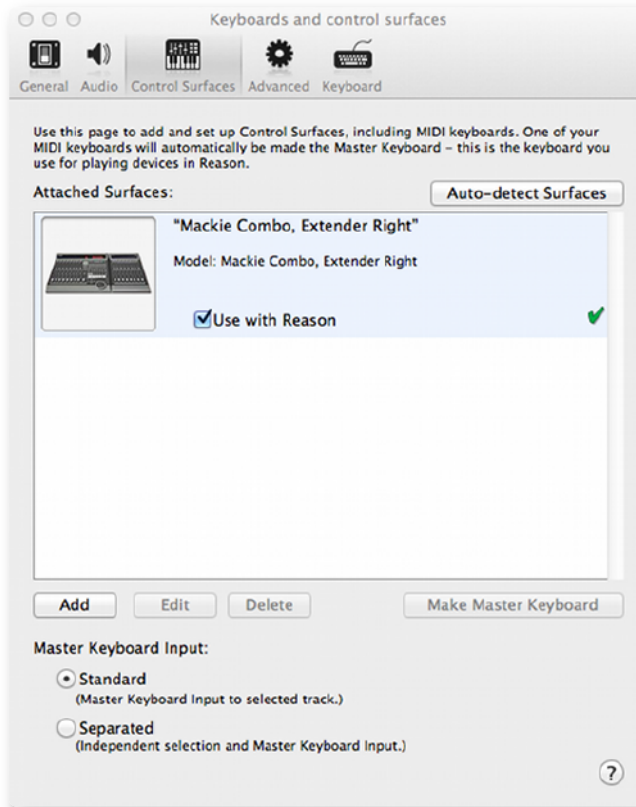
DAW CMND	SOFTKEY LABEL	REASON FUNCTION	NOTES
Loop	Loop	Loop	
Click	Click	Metronome	
Forward	Forwrđ	Transport	
Rewind	Rewind	Transport	
Stop	Stop	Transport	
Play	Play	Transport	
Record	Record	Transport	
Play footswitch	PlayFS	Transport	External Footswitch
Record	RecFS	Transport	External Footswitch
Scrub	Scrub		

Once a command has been assigned to a Soft Key, it can be renamed via the Browser with any label you wish.

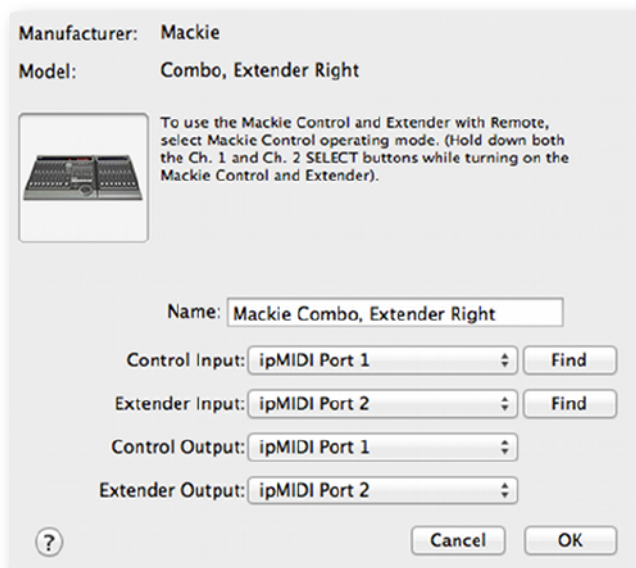
Additional useful information for controlling Reason can be found in the Reason Control Surface Details Manual which describes MCU operation and general MIDI control, as well as in the Reason Key Commands manual available on the Propellerhead website - <http://www.propellerheads.se/>

Configuring Reason for NUCLEUS Control

In the Reason Preferences menu, select the Keyboard and Control Surfaces page and use the Add command to select a Mackie Combo, Extender Right option. Enter ipMIDI Ports according to the Nucleus DAW layer that will be controlling reason. In the example below, Reason will be controlled from Nucleus DAW Layer 1.



Click on Edit to define the iPMidi ports. In this example Reason is being controlled via the Nucleus DAW layer 1.



Click on OK to finish the Set Up.

Solid State Logic

S O U N D | | V I S I O N

Visit SSL at: www.solidstatelogic.com

© Solid State Logic

All Rights reserved under International and Pan-American Copyright Conventions

Nucleus is a trademark of Solid State Logic

All other product names and trademarks are the property of their respective owners and are hereby acknowledged

No part of this publication may be reproduced in any form or by any means, whether mechanical or electronic, without the written permission of Solid State Logic, Oxford, OX5 1RU, England

As research and development is a continual process, Solid State Logic reserves the right to change the features and specifications described herein without notice or obligation

Solid State Logic cannot be held responsible for any loss or damage arising directly or indirectly from any error or omission in this manual

E&OE

Free Manuals Download Website

<http://myh66.com>

<http://usermanuals.us>

<http://www.somanuals.com>

<http://www.4manuals.cc>

<http://www.manual-lib.com>

<http://www.404manual.com>

<http://www.luxmanual.com>

<http://aubethermostatmanual.com>

Golf course search by state

<http://golfingnear.com>

Email search by domain

<http://emailbydomain.com>

Auto manuals search

<http://auto.somanuals.com>

TV manuals search

<http://tv.somanuals.com>