

SonicWALL Internet Security Appliances
TZ 170 Quick Start Guide



Quick Start Installation

Thank you for purchasing a SonicWALL Internet security appliance. The SonicWALL acts as a secure barrier between your private LAN and the public Internet (WAN) to protect your networks from security threats on the Internet.

This Quick Start Guide provides instructions for installing and configuring your SonicWALL TZ 170 as an Office Gateway on your network. After you complete this guide, you can access the Internet securely through your LAN connection.

Before You Begin

Check Package Contents

- One SonicWALL Internet Security Appliance
- One SonicWALL Quick Start Guide
- One SonicWALL Firmware and Documentation CD
- One Ethernet cable
- One RJ45 CLI cable*
- One 5 Volt DC power supply
- One Power cord**

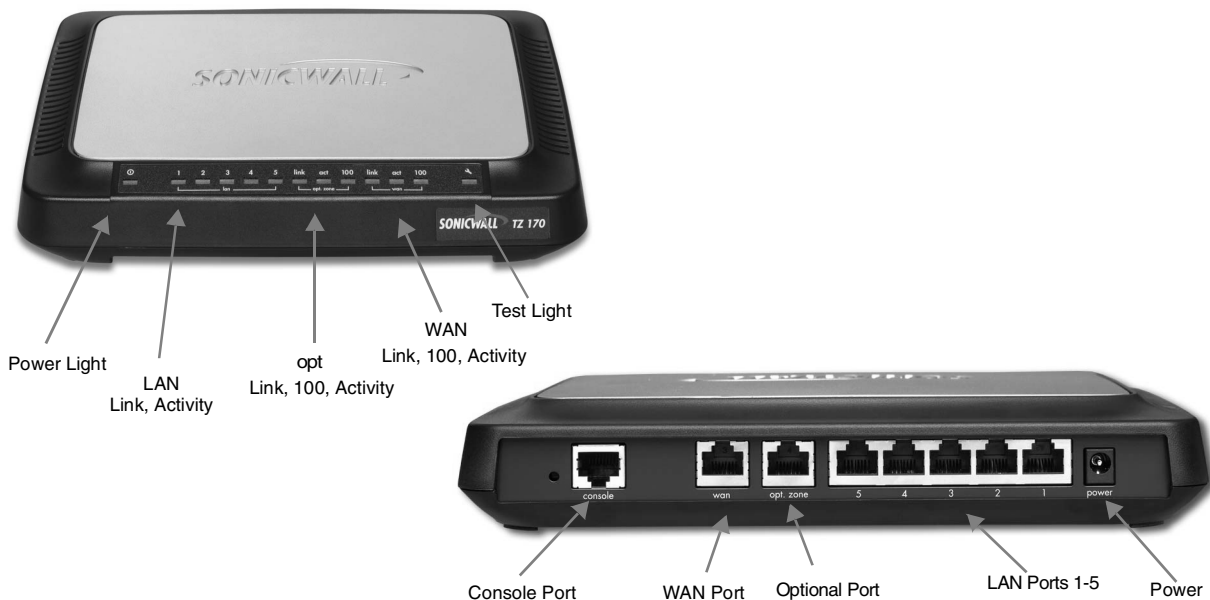
*The RJ45 CLI cable is only included with the purchase of a TZ 170 with SonicOS Enhanced.

**A power cord is included only with units shipped to North America.

If any items are missing from your package, contact SonicWALL, Inc.

Web: <<http://www.sonicwall.com/support/>> Phone: (888) 777-1476

Overview of the SonicWALL TZ 170 Hardware



What You Need to Get Connected

- SonicWALL Internet Security Appliance
- Internet Connection
- PC or Macintosh computer
- A Web browser (Microsoft Internet Explorer v5.0 or later, or Netscape Navigator v4.7 or later - your Web browser must support Java and HTTP uploads in order to fully manage the SonicWALL.)
- Internet Service Provider (ISP) Information TEL: _____

ISP Connection Information

Before you can begin installing your SonicWALL, determine how your ISP distributes IP addresses. Call your ISP to find out if your Internet connection uses DHCP to obtain an IP address, or PPPoE (typical of DSL access), or if they have given you a static IP address. Record all of your networking information in the checklist below:

IP Addressing using DHCP

No action necessary. The SonicWALL automatically detects the presence of a DHCP server during setup.

IP Addressing using PPPoE

User Name: _____

Password: _____

IP Addressing using a Single, Static Public IP Address

IP Address: _____

Subnet Mask: _____

Default Gateway: _____

Primary DNS: _____

Secondary DNS: _____



Alert!

*If you are not using one of the network configurations above, step by step installation instructions for additional networking methods are found in **Configuring the Network Mode** section of your Administrator's Guide. The Administrator's Guide is located on your product CD and requires Acrobat Reader to view it. Acrobat Reader is also provided on your product CD.*

Glossary

- **IP Address** - A set of numbers in the format, XXX.XXX.XXX.XXX, used to address computers on the Internet.
- **Subnet Mask** - A set of numbers in IP address format using 255 in place of the XXX's. It determines the type of network by "masking" out numbers. A Class C network has a subnet mask of 255.255.255.0.
- **Default Gateway** - A device on an internetwork that forwards packets to another network.
- **DNS (Domain Name System) Server** - A computer that "looks up" the name of a computer and finds the corresponding IP address. This allows you to access computers on the Internet without configuring IP addresses for remote connections.
- **PPPoE** - Point to Point Protocol over Ethernet supports the transmission of network packets over serial transmission lines such as DSL or POTS (Plain Old Telephone Service).
- **DHCP** - Dynamic Host Configuration Protocol allocates IP addresses to computers on the network automatically without assigning a computer a static (fixed) IP address.
- **VPN** - Virtual Private Network is a "virtual" network that encrypts data and sends it privately over the Public Internet

Setting Up Your SonicWALL

1

Applying Power to the SonicWALL

Attach the power supply to the power cord. Plug the power adapter into the SonicWALL and plug the other end into a power outlet.

The **Power** light turns green when power is applied to the SonicWALL. Also, the **Test** light remains lit for approximately 90 seconds while the SonicWALL performs a series of diagnostic tests.



Connecting the SonicWALL to the Network


2

Connect one end of an Ethernet cable to your DSL modem, cable modem, or Internet router. Connect the other end of the Ethernet cable to the WAN port of the SonicWALL. The **link** LED lights indicating an active connection. .



3

Connect one end of an Ethernet cable to the Ethernet port of your computer. Connect the other end of the cable to LAN 1 port of your SonicWALL. The **link** LED lights indicating an active connection.

Setup Continues 

4 Configuring Your Management Station

Your SonicWALL is configured with the default IP address of 192.168.168.168. This IP address is used to initially access the Management interface of the SonicWALL and launch the Setup Wizard. To access the Management interface for the first time, you must configure your computer with an IP address in the same network range as the SonicWALL. Follow the instructions below for your operating system:

Windows XP

1. Click **Start**, then **Connect to**.
2. Right-click on the **Local Area Connection** icon and select **Properties**.
3. Open the **Local Area Connection Properties** window.
4. Double-click **Internet Protocol (TCP/IP)** to open the **Internet Protocol (TCP/IP) Properties** window.
5. Select **Use the following IP address** and type 192.168.168.200 in the **IP address** field.
6. Type 255.255.255.0 in the **Subnet Mask** field.
7. Type the DNS IP address in the **Preferred DNS Server** field. If you have more than one address, type the second one in the **Alternate DNS server** field.
8. Click **OK** for the settings to take effect on the computer.

Windows 2000

1. From your Windows task bar, click **Start**.
2. Then click **Settings**.
3. Click **Network and Dial-up Connections**.
4. Double-click the network icon to open the connection window.
5. Click **Properties**.
6. Highlight **Internet Protocol (TCP/IP)** and click **Properties**.
7. Select **Use the following IP address**.
8. Enter 192.168.168.200 in the **IP address** field.
9. Enter 255.255.255.0 in the **Subnet** field.
10. If you have a DNS Server IP address from your ISP, enter it in the **Preferred DNS Server** field.

Windows NT

1. From the **Start** list, highlight **Settings** and then select **Control Panel**.
2. Double-click the **Network** icon in the **Control Panel** window.
3. Double-click **TCP/IP** in the **TCP/IP Properties** window.
4. Select **Specify an IP Address**.
5. Type "192.168.168.200" in the **IP Address** field.
6. Type "255.255.255.0" in the **Subnet Mask** field.
7. Click **DNS** at the top of the window.
8. Type the DNS IP address in the **Preferred DNS Server** field. If you have more than one address, enter the second one in the **Alternate DNS server** field.
9. Click **OK**, and then click **OK** again.
10. Restart the computer.

Setup Continues 

Windows 98

1. From the **Start** list, highlight **Settings** and then select **Control Panel**. Double-click the **Network** icon in the **Control Panel** window.
2. Double-click **TCP/IP** in the **TCP/IP Properties** window.
3. Select **Specify an IP Address**.
4. Type "192.168.168.200" in the **IP Address** field.
5. Type "255.255.255.0" in the **Subnet Mask** field.
6. Click **DNS Configuration**.
7. Type the DNS IP address in the **Preferred DNS Server** field. If you have more than one address, type the second one in the **Alternate DNS server** field.
8. Click **OK**, and then click **OK** again.
9. Restart the computer for changes to take effect.

5

Launching the Setup Wizard

To begin the configuration of your SonicWALL, you must log into the SonicWALL using a Web browser and the default LAN IP address, 192.168.168.168, of the SonicWALL. Follow the instructions below:

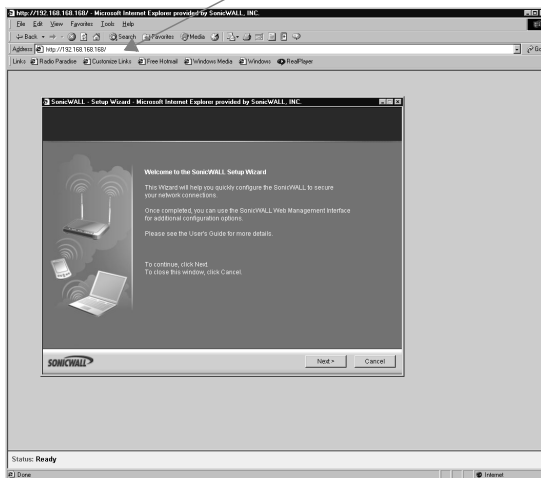
1. Launch your Web browser.



Alert!

Because you are temporarily disconnected from the Internet, you may receive an error message when your Web browser first opens. This does not affect your installation process. Continue with the steps below.

2. Enter 192.168.168.168 in the **Location** or **Address** field.



Alert!

Your Web browser must support Java and HTTP uploads in order to fully manage the SonicWALL appliance. Internet Explorer 5.0 or higher, as well as Netscape Navigator 4.0 or higher, are recommended.

3. The SonicWALL Installation Wizard launches and guides you through the configuration and setup of your SonicWALL.

Setup Continues



If you cannot connect to the SonicWALL TZ 170, check the following:

- Did you correctly enter the SonicWALL TZ 170 LAN IP address in your browser window?
- Is the SonicWALL TZ 170 connected to the same network as your computer?
- Have you changed the TCP/IP network settings on your computer? (Step 4)

6

The Setup Wizard

The **Setup Wizard** provides easy to follow instructions for configuring the SonicWALL on your network. You must have your ISP information to complete the configuration using the Setup Wizard.



TIP!

*Certain browser configurations may not launch the Installation Wizard automatically. In this case, you must log into the SonicWALL using “Admin” as the **User Name** and “password” as the **Password**. After you log into the SonicWALL, click Wizards. Select **Setup** to begin configuring the SonicWALL.*

Follow the steps below for the quickest and easiest configuration for the TZ 170 as an Office Gateway:

Step 1: Welcome - Read the information on the Welcome dialogue box. Click **Next**.

Step 2: Change Password - change the TZ 170 password to your personal password. Click **Next**.

Step 3: Change Time Zone - change the Time Zone to your location’s Time Zone. Click **Next**.

Step 4: WAN Network Mode - the type of network connectivity is detected automatically. If you want to select a different network mode, consult the SonicOS 2.0s Administrator’s Guide on your product CD for more information.

Step 5: WAN Network Mode - if PPPoE is detected as your network connection, enter your user name and password from your ISP. Click **Next**. If a DHCP server is detected, click **Next**.

Step 6: LAN Settings - Review the LAN IP address and subnet mask. Use the default values.

Step 11: SonicWALL Configuration Summary - Write down your network configuration information below. Click **Apply**.

Setup Wizard Complete - Your SonicWALL is now successfully configured for LAN and Internet access. Click **Restart** to complete the configuration process.

Network Settings

WAN - Network Mode: _____ IP Address: _____ Subnet Mask: _____

Router IP Address: _____ DNS Server 1 IP Address: _____

DNS Server 2 IP Address: _____

LAN - IP Address: _____ Subnet Mask: _____ DHCP Enabled: Yes ___ No ___



TIP!

You must register your SonicWALL at <<http://www.mysonicwall.com>> to obtain the latest version of SonicWALL SonicOS 2.0s firmware and access technical support.

Configuring Computers on the LAN

When the SonicWALL restarts, a window displays information to configure computers on your LAN.

DHCP Server Enabled on the SonicWALL TZ 170

If you enabled the SonicWALL DHCP Server or have a DHCP Server on your LAN, each computer must be configured to obtain its IP address dynamically. After the SonicWALL has restarted, change the network settings on the computers on the LAN. Follow the steps below for your operating system:

Windows XP

1. Click **Start**, then **Connect to**.
2. Right-click on the **Local Area Connection** icon and select **Properties**.
3. Open the **Local Area Connection Properties** window.
4. Double-click **Internet Protocol (TCP/IP)** to open the **Internet Protocol (TCP/IP) Properties** window.
5. Select **Obtain an IP address automatically**.
6. Select **Obtain DNS Server automatically**.
7. Click **OK** and then **OK** again for the settings to take effect on the computer.

Windows 2000

1. From your Windows task bar, click **Start**.
2. Then click **Settings**.
3. Click **Network and Dial-up Connections**.
4. Double-click the network icon to open the connection window.
5. Click **Properties**.
6. Highlight **Internet Protocol (TCP/IP)** and click **Properties**.
7. Select **Obtain an IP address automatically**.
8. Select **Obtain DNS Server automatically**.
9. Click **OK** and then **OK** again for the settings to take effect on the computer.

Windows NT

1. From the **Start** list, highlight **Settings** and then select **Control Panel**.
2. Double-click the **Network** icon in the **Control Panel** window.
3. Double-click **TCP/IP** in the **TCP/IP Properties** window.
4. Select **Obtain an IP address automatically**.
5. Click **DNS** at the top of the window.
6. Select **Obtain DNS Server automatically**.
7. Click **OK**, and then click **OK** again.
8. Restart the computer.

Windows 98

1. From the **Start** list, highlight **Settings** and then select **Control Panel**. Double-click the **Network** icon in the **Control Panel** window.
2. Double-click **TCP/IP** in the **TCP/IP Properties** window.
3. Select **Obtain IP Address automatically**.
4. Click **DNS Configuration**.
5. Select **Obtain DNS Server automatically**.
6. Click **OK**, and then click **OK** again.
7. Restart the computer for changes to take effect.

LAN Configuration Complete!

The SonicWALL is now functioning and protecting your network from Internet-based attacks and break-ins.

DHCP Server Disabled

If you did not enable the SonicWALL DHCP server or you do not have a DHCP server on your network, you must configure each computer with a static IP address from your LAN IP address range.

After the SonicWALL has restarted, change the network settings on computers located on the LAN.

Follow the steps below to configure computers on your LAN:

Windows XP

1. Click **Start**, then **Connect to**.
2. Right-click on the **Local Area Connection** icon and select **Properties**.
3. Open the **Local Area Connection Properties** window.
4. Double-click **Internet Protocol (TCP/IP)** to open the **Internet Protocol (TCP/IP) Properties** window.
5. Select **Use the following IP address** and type an IP address from your LAN IP range in the **IP address** field.
6. Type 255.255.255.0 in the **Subnet Mask** field.
7. Type the SonicWALL LAN IP Address into the **Default Gateway** field.
8. Type the DNS IP address in the **Preferred DNS Server** field. If you have more than one address, type the second one in the **Alternate DNS server** field.
9. Click **OK** for the settings to take effect on the computer.

Windows 2000

1. From your Windows task bar, click **Start**.
2. Then click **Settings**.
3. Click **Network and Dial-up Connections**.
4. Double-click the network icon to open the connection window.
5. Click **Properties**.
6. Highlight **Internet Protocol (TCP/IP)** and click **Properties**.
7. Select **Use the following IP address**.
8. Type an IP address from your LAN IP range **IP address** field.
9. Enter 255.255.255.0 in the **Subnet** field.
10. Type the SonicWALL LAN IP Address into the **Default Gateway** field.
11. If you have a DNS Server IP address from your ISP, enter it in the **Preferred DNS Server** field.

Windows NT

1. From the **Start** list, highlight **Settings** and then select **Control Panel**.
2. Double-click the **Network** icon in the **Control Panel** window.
3. Double-click **TCP/IP** in the **TCP/IP Properties** window.
4. Select **Specify an IP Address**.
5. Type an IP address from your LAN IP range in the **IP Address** field.
6. Type 255.255.255.0 in the **Subnet Mask** field.
7. Type the SonicWALL LAN IP Address in the **Default Gateway** field.
8. Click **DNS** at the top of the window.
9. Type the DNS IP address in the **Preferred DNS Server** field. If you have more than one address, enter the second one in the **Alternate DNS server** field.
10. Click **OK**, and then click **OK** again.
11. Restart the computer.

Windows 98

1. From the **Start** list, highlight **Settings** and then select **Control Panel**. Double-click the **Network** icon in the **Control Panel** window.
2. Double-click **TCP/IP** in the **TCP/IP Properties** window.
3. Select **Specify an IP Address**.
4. Type an IP address from your LAN IP range in the **IP Address** field.
5. Type "255.255.255.0" in the **Subnet Mask** field.
6. Type the SonicWALL LAN IP Address in the **Default Gateway** field.
7. Click **DNS Configuration**.
8. Type the DNS IP address in the **Preferred DNS Server** field. If you have more than one address, type the second one in the **Alternate DNS server** field.
9. Click **OK**, and then click **OK** again.
10. Restart the computer for changes to take effect.

LAN Configuration Complete!

The SonicWALL is now functioning and protecting your network from Internet-based attacks and break-ins.

SonicWALL TZ 170 Technical Specifications

Processor: SonicWALL Security Processor

RAM: 64 MB

Flash Memory: 8 MB

Interfaces: 7 10/100 auto-sensing Ethernet

(1) WAN 10/100 Base-T

(1) Optional Port

(1) 5-port Auto-MDIX Switch

(1) RJ45 Console Port

Firewall Performance: 90 Mbps

Site to Site VPN Policies:

10 Node - 1

25 Node - 10

Unrestricted Nodes- 10

Bundled VPN Client Sessions:

10 Node - 0

25 Node - 1

Unrestricted Nodes- 1

Firewall Nodes: 10/25/Unrestricted

Concurrent Connections: 6,000

VPN Performance: 25+ Mbps (3DES and AES)

Dimensions: 9.07 x 6.63 x 1.63 inches
(23.03 x 16.84 x 4.14 cm)

Weight: 1.15 lb. (0.52 kg)

LEDs:

Status (Power, Test)

LAN 1 per port (multifunctional)

WAN (link, activity, 100)

Optional Port (link, activity, 100)

Input Power: 100V to 240VAC

Power Consumption: 12 Watts Maximum

Standards: NAT, DNS, RIPv1/v2, TCP/IP, UDP, ICMP, HTTP, HTTPS, IPSec, ISAKMP/IKE, SNMP, DHCP, PPPoE, L2TP, PPTP, RADIUS

Environment:

Temperatures 40 - 105° F, (5-40° C)

Relative Humidity 10-90% noncondensing

Operational Altitude: 0 to 13,123 ft. (4000m)

Operating System: SonicOS Standard
upgradeable to SonicOS Enhanced

Major Regulatory Compliance:

EMC: FCC Class B, ICES Class B, CE, C-tick, VCCI, BSMI, MIC

Safety: UL, cUL, TUV/GS, CB, NOM

Appendix

Resetting the Firmware to Factory Default Settings

At times, it may be necessary to reset the firmware on your SonicWALL TZ 170. For example, if you've forgotten your password and cannot access the management interface, resetting the firmware allows you to reset the SonicWALL TZ 170 to factory default settings including the user name and password.

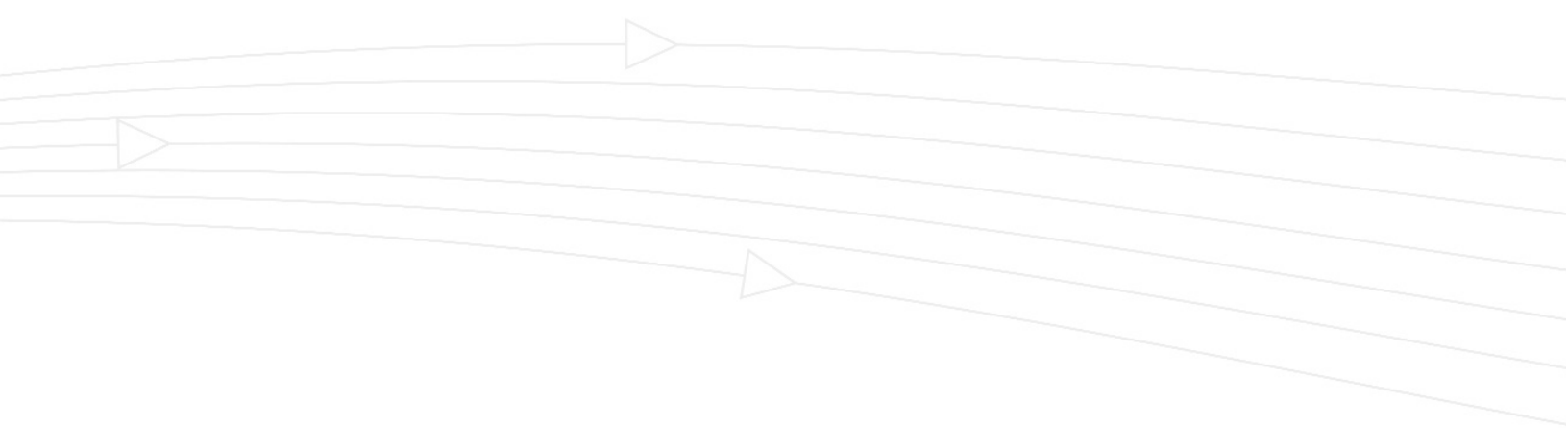
To quickly reset the firmware to factory default settings, locate the **Reset** button on the back of the SonicWALL TZ 170 next to the LAN connection. Using a pointed object, press and hold the **Reset** button for 5-10 seconds. All settings are returned to the factory default settings including the password and the default LAN IP address of 192.168.168.168.

***Note:** This reset method does not require reloading the firmware.*

Resetting Firmware if Firmware is Corrupted (Test Light remains on)

If the **Test** light remains on after 90 seconds, the firmware may be corrupted. Follow these steps to load firmware onto the appliance:

1. To load new firmware onto the SonicWALL TZ 170, power down the appliance.
2. Wait 30 seconds, press and hold the **Reset** button.
3. At the same time, power on the appliance.
4. Continue to hold the Reset button until the **Test** light begins blinking.
5. Once the Test light stops blinking and remains lit, release the **Reset** button.
6. Open a Web browser, and type 192.168.168.168 into the **Address** or **Location** field.
7. A Web page displays the message, "Firmware appears to be corrupted." Click **Browse** to open a **File Open** dialogue box. Browse to the location of the firmware file. A rescue version of the firmware is located on the product CD.
8. After restoring the firmware on the appliance, go to <<https://www.mysonicwall.com>> and log into your account. Download the latest version of the firmware and then upload it to your appliance.



SonicWALL, Inc.

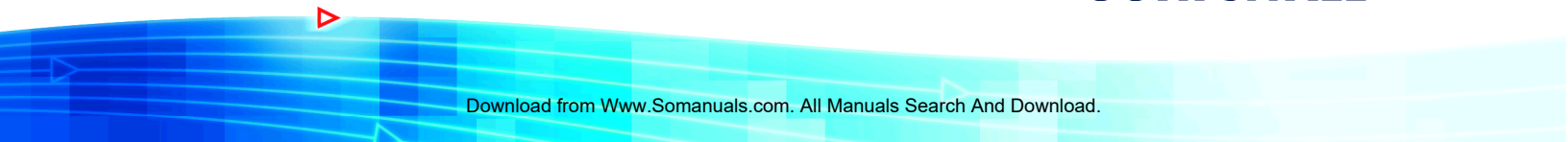
1143 Borregas Avenue
Sunnyvale, CA 94089-1306

T: 408.745.9600
F: 408.745.9300

www.sonicwall.com

© 2002 SonicWALL, Inc. SonicWALL is a registered trademark of SonicWALL, Inc. Other product and company names mentioned herein may be trademarks and/or registered trademarks of their respective companies. Specifications and descriptions subject to change with out notice.

P/N 232-000398-00
Rev A 09/03



Free Manuals Download Website

<http://myh66.com>

<http://usermanuals.us>

<http://www.somanuals.com>

<http://www.4manuals.cc>

<http://www.manual-lib.com>

<http://www.404manual.com>

<http://www.luxmanual.com>

<http://aubethermostatmanual.com>

Golf course search by state

<http://golfingnear.com>

Email search by domain

<http://emailbydomain.com>

Auto manuals search

<http://auto.somanuals.com>

TV manuals search

<http://tv.somanuals.com>