

Congratulations on your purchase, and welcome to Philips!
To fully benefit from the support that Philips offers, register your product at www.philips.com/welcome.

The Sonicare For Kids is designed for children from 4 to 10 years of age. It is not intended for adult use.
For children under age 8, dental professionals recommend that tooth brushing is supervised by a parent or adult caregiver.

GETTING STARTED

Personalize your Sonicare with a removable and interchangeable panel

Attach the brush head

Charge your Sonicare

Charge for 24 hours before use. Charge indicator flashes when battery is low; 3 beeps and 30-second rapid flashing indicate charge is extremely low.

Replace the brush head regularly

BRUSHING WITH THE SONICARE

Choose brushing power mode

Press the brushing power mode button when the Sonicare is off to change modes. The two modes provide gentle, yet effective cleaning that's right for different ages. The mode cannot be changed during brushing.

The **KidTimer** feature sets brushing time for the different modes. High power mode uses 30-second intervals for the full dentist-recommended 2 minutes of brushing. In low power mode, brushing duration slowly increases from 1 minute to 2. This helps young children gradually reach 2 minutes of brushing. Time increases every time a full brushing cycle is completed.

Prepare to brush your teeth

Place the bristles against the teeth at a slight angle towards the gumline.

During brushing, the **KidPacer** feature uses a few musical notes to alert the child to move to the next brushing section of the mouth. Instruct your child to move to a different section after each set of notes. At the end of the brushing cycle, a congratulatory tune will play and the toothbrush will automatically turn off.

Brush evenly throughout the mouth in four sections

Do not scrub teeth, but gently glide the brush head slowly across the teeth. Apply light pressure to let the Sonicare do the brushing for you. You may press the on/off button to pause for up to 20 seconds without starting the cycle over. When finished, spend additional time brushing the chewing surfaces of your teeth, if desired. You may also brush your tongue.

IMPORTANT SAFEGUARDS

READ ALL INSTRUCTIONS BEFORE USE

DANGERS

- To reduce the risk of electrocution:
- Do not place or store product where it can fall or be pulled into a tub or sink.
 - Do not place in or drop into water or other liquid.
 - Do not reach for a product that has fallen into water. Unplug immediately.
 - Do not use while bathing.

WARNINGS

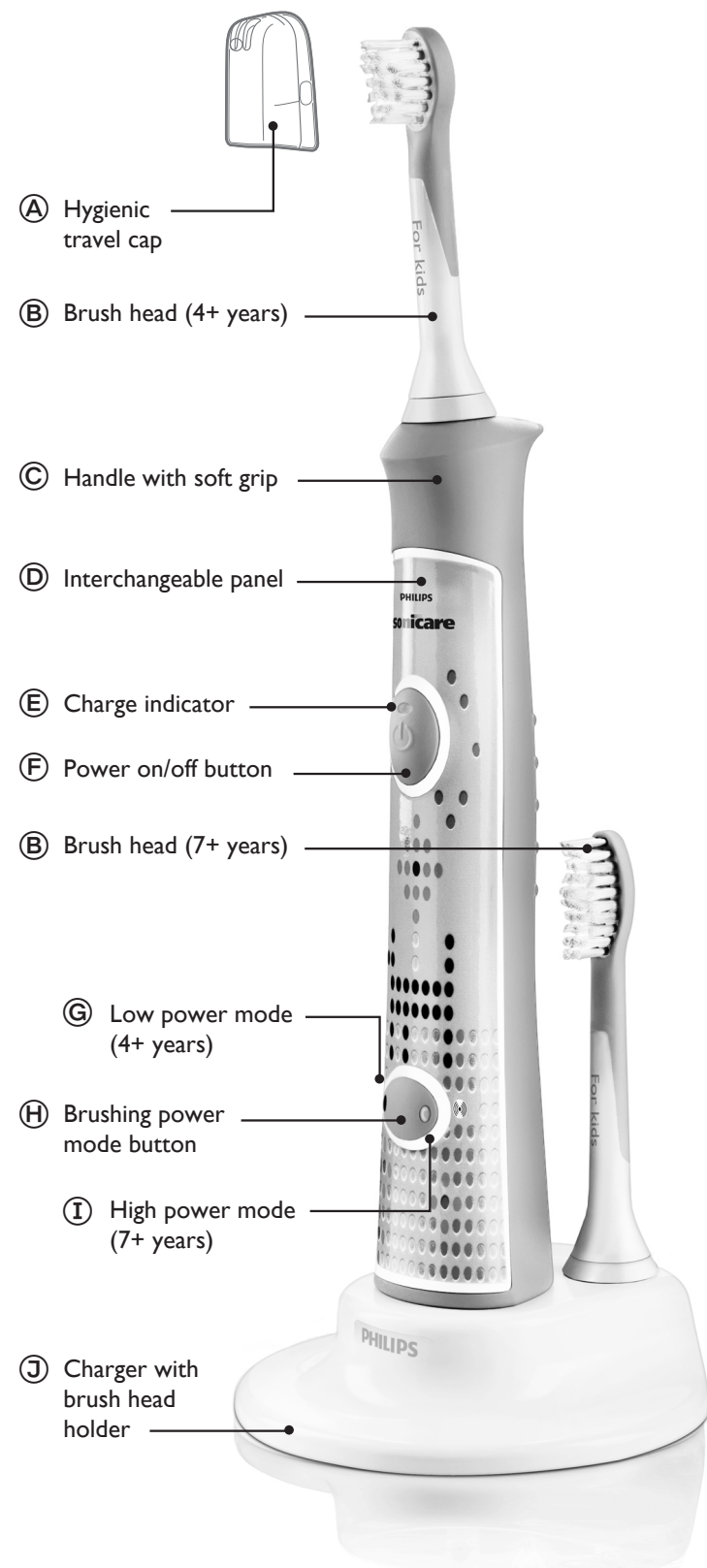
- To reduce the risk of burns, electrocution, fire or injury to persons:
- Discontinue use if this product appears damaged in any way (brush head, handle, charger). This product contains no serviceable parts. Refer to 'Guarantee and Service' if your Sonicare no longer works properly or needs repair.
 - Never use the charger if it has a damaged cord or plug.
 - Keep cord away from heated surfaces.
 - Do not use the charger outdoors.
 - Do not use the charger if dropped into water.
 - This product is designed to clean your teeth, gums and tongue only. Use this product only for its intended use as described in this booklet. Discontinue use of this product and contact a physician/dentist if discomfort or pain is experienced.
 - This appliance is not intended for use by persons (including children) with reduced physical, sensory or mental capabilities, or lack of experience and knowledge, unless they have been given supervision or instruction concerning use of the appliance by a person responsible for their safety.
 - Children should be supervised to ensure that they do not play with the appliance.
 - Do not use attachments other than those recommended by the manufacturer.
 - If your toothpaste contains peroxide, baking soda or bicarbonate (common in whitening toothpastes), thoroughly clean the brush head with soap and water after each use. This prevents possible cracking of the plastic.

MEDICAL WARNINGS

- Consult your dental professional before you use this product if you have had oral or gum surgery in the previous 2 months.
- Contact your dental professional if excessive bleeding occurs after using this product or bleeding continues to occur after 1 week of use.
- If you have a pacemaker or other implanted device, contact your physician or the device manufacturer prior to use.
- Sonicare has been tested and is compliant with safety standards for electromagnetic devices.
- Consult your physician prior to using the Sonicare if you have medical concerns.

SAVE THESE INSTRUCTIONS

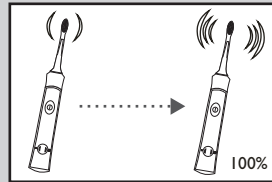
Register your product and get support at
www.philips.com/welcome



4235 020 35691

GETTING USED TO YOUR SONICARE

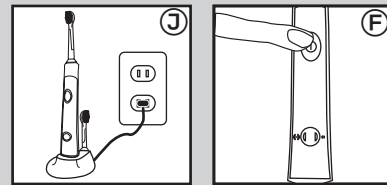
Sonic power gently increases



Easy-start ramp-up

The Sonicare may feel ticklish upon first use. To help your child ease into the Sonicare experience, the **Easy-start** feature will gradually increase the sonic power over the first 14 brushings (both high and low modes). Brushing must last at least 1 minute to properly advance through this ramp-up cycle.

Ramp-up cycle may be deactivated



Handle on charger

Hold 2 seconds

Push and hold the on/off button for 2 seconds. 1 beep indicates the Easy-start feature has been deactivated; 2 beeps indicates the feature has been reactivated.

SUPPORT

If you have additional questions about your product or require product support, please contact one of the following:

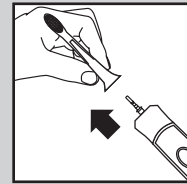
North America:
1-800-682-7664
[www.sonicare.com](http://www sonicare.com)

Philips Oral Healthcare, Inc.
35301 SE Center Street
Snoqualmie WA 98065
U.S.A.

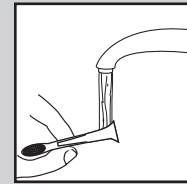
Outside North America:
+1-425-396-2000
www.philips.com

CLEANING THE SONICARE

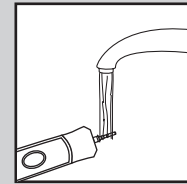
Clean brush head, handle, and charger when needed



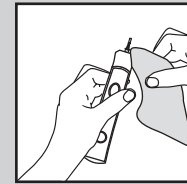
Remove head



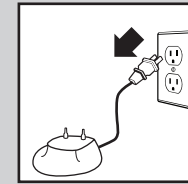
Rinse connection



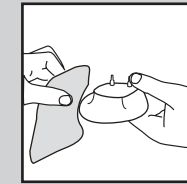
Rinse metal shaft



Use damp cloth



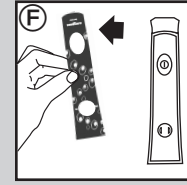
Unplug charger



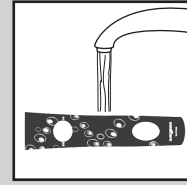
Use damp cloth

Do not use sharp objects to clean.

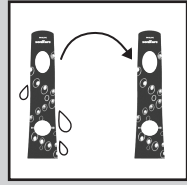
Clean/reuse interchangeable panel when needed



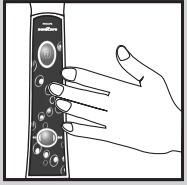
Remove panel



Rinse



Air dry



Apply

Reapply the panel or apply a different panel. The adhesive backing stays active through multiple cleanings, so panels may be removed and reapplied multiple times.

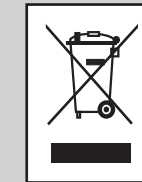
Storing

If the Sonicare will not be used for an extended period of time, unplug the charger, clean the product, and store it in a cool, dry place away from direct sunlight.

DISPOSING OR RECYCLING AT END OF PRODUCT LIFE

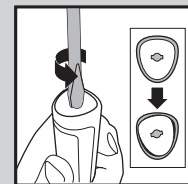
The Sonicare battery and the environment

The rechargeable battery inside your Sonicare cannot be replaced, but it is easy to remove for recycling. Like any rechargeable battery, it contains substances that may pollute the environment if discarded with regular household waste. At the end of the toothbrush's life, always remove the battery before you discard the toothbrush, and recycle or dispose of the battery according to local waste management requirements. If you have any recycling questions, contact your local waste management office.



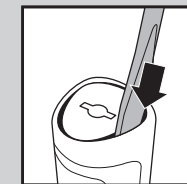
Removing and recycling the battery

Please note that this process is not reversible. Only remove the battery at the end of the toothbrush's life. Doing so earlier will destroy the product. Observe basic safety precautions.



Twist screwdriver

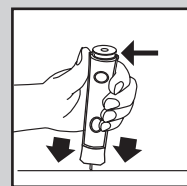
Insert a flat-head screwdriver into the slot located at the bottom of the handle. Turn counterclockwise until you see a gap between the bottom cap and the handle.



Pry bottom cap

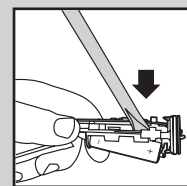
Insert the screwdriver into the gap and pry the bottom cap out of the handle.

Removing and recycling the battery (continued)



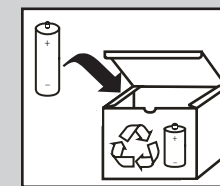
Push on shaft

Hold the handle upside down and push down on the shaft to release the internal components of the handle.



Pry out battery

Insert the screwdriver under the circuit board and twist to break the connections. Remove the circuit board and pry the battery from the plastic carrier.



Recycle/dispose properly

Recycle or dispose of the battery properly. Ask your local waste management office if they accept the remaining Sonicare components for recycling.

GUARANTEE AND SERVICE

Philips guarantees its products for 2 years after the date of purchase.

Defects due to faulty materials and workmanship will be repaired or replaced at Philips expense provided that convincing proof of purchase in the qualifying period is provided.

Contact our Customer Service Center at 1-800-682-7664 (North America), outside North America contact your local Philips Customer Care Center.

WARRANTY EXCLUSIONS

What is not covered under warranty:

- Brush heads
- Interchangeable panels
- Damage caused by misuse, abuse, neglect, alterations or unauthorized repair
- Normal wear and tear, including chips, scratches, abrasions, discoloration or fading

IMPLIED WARRANTIES

ANY IMPLIED WARRANTIES, INCLUDING IMPLIED WARRANTIES OF MERCHANTABILITY AND FITNESS FOR A PARTICULAR PURPOSE, SHALL BE LIMITED TO THE DURATION OF THE EXPRESS WARRANTIES SET FORTH ABOVE. IN SOME STATES LIMITATIONS ON DURATION OF IMPLIED WARRANTIES DO NOT APPLY.

LIMITATION OF REMEDIES

IN NO EVENT SHALL PHILIPS OR ANY OF ITS AFFILIATED OR SUBSIDIARY COMPANIES BE LIABLE FOR ANY SPECIAL, INCIDENTAL OR CONSEQUENTIAL DAMAGES BASED UPON BREACH OF WARRANTY, BREACH OF CONTRACT, NEGLIGENCE, TORT, OR ANY OTHER LEGAL THEORY. SUCH DAMAGES INCLUDE, WITHOUT LIMITATION, LOSS OF SAVINGS OR REVENUE; LOSS OF PROFIT; LOSS OF USE; THE CLAIMS OF THIRD PARTIES INCLUDING, WITHOUT LIMITATION, DENTISTS AND DENTAL HYGIENISTS; AND COST OF ANY SUBSTITUTE EQUIPMENT OR SERVICES. SOME STATES DO NOT ALLOW THE EXCLUSION OR LIMITATION OF INCIDENTAL OR CONSEQUENTIAL DAMAGES.

Clinical studies are performed for 2 minutes with the Sonicare For Kids fully charged and the Easy-start feature deactivated.



Printed in the U.S.A.
Printed on 100% Recycled Paper.

PHILIPS
sonicare
the sonic toothbrush

For additional information: www.Sonicare.com

Download from Www.Somanuals.com. All Manuals Search And Download.

Protected by U.S. and international patents.
Other patents pending.



Free Manuals Download Website

<http://myh66.com>

<http://usermanuals.us>

<http://www.somanuals.com>

<http://www.4manuals.cc>

<http://www.manual-lib.com>

<http://www.404manual.com>

<http://www.luxmanual.com>

<http://aubethermostatmanual.com>

Golf course search by state

<http://golfingnear.com>

Email search by domain

<http://emailbydomain.com>

Auto manuals search

<http://auto.somanuals.com>

TV manuals search

<http://tv.somanuals.com>