



STYLEPRO™ SERIES

SONY

FD Trinitron® CRT Computer Displays

E240, E240/B

E440, E440/B

E540, E540/B



E240, E240/B



E540, E540/B



E440, E440/B



FD Trinitron® CRT – Visually flat screen delivers outstanding image quality, reducing glare and distortion.

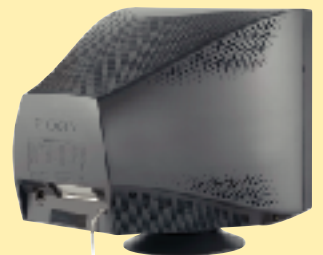
Aperture Grille – Sony technology sets standard in image clarity and precision.

Tilt & Swivel Design – Provides optimal viewing angle and maximum comfort.

Digital Multiscan® technology – Flexible scan capability supports multiple resolutions.

HiDensity™ Electron Gun – Ensures consistent, accurate focus across the entire screen, even in the corners.

DisplayMouse™ OSD – Simplifies set-up, troubleshooting and on screen adjustments.



STYLEPRO™ SERIES

VISUAL INNOVATION - CLEARLY SONY

Blending style, performance and reliability-clearly, the best value in Sony displays.



Model Number	E240, E240/B	E440, E440/B	E540, E540/B
Screen Size/VIS	17" / 16.0"	19"/18.0"	21" / 19.8"
CRT Type	FD Trinitron	FD Trinitron	FD Trinitron
Mask Type	Aperture Grille	Aperture Grille	Aperture Grille
Grille Pitch	0.24 - 0.25 mm	0.24 - 0.25 mm	0.24 mm
Cabinet Color	Two-tone Grey: E240 Black : E240/B	Two-tone Grey: E440 Black : E440/B	Two-tone Grey: E540 Black : E540/B
Screen Coating	High Contrast - Anti Reflective	High Contrast - Anti Reflective	High Contrast - Anti Reflective
Horizontal Scan (kHz)	30 - 70kHz	30 - 96kHz	30 - 110kHz
Vertical Refresh (Hz)	48 - 120Hz	48 - 170Hz	48 - 170Hz
Maximum Resolution	1280 x 1024	1600 x 1200	1920 x 1440
Recommended Resolutions	1024 x 768 @85Hz 800 x 600 @ 85Hz	1280 x 1024 @85Hz 1024 x 768 @85Hz 800 x 600 @ 85Hz	1600 x 1200 @85Hz 1280 x 1024 @85Hz 1024 x 768 @85Hz
Tilt Range	-5° to +15°	-5° to +15°	-5° to +15°
Swivel Range	±90°	±90°	±90°
Color Temperature Control	5000K / 9300K Presets 5000K-9300K User Adjustable	5000K / 9300K Presets 5000K-9300K User Adjustable	5000 / 6500 / 9300K Presets 5000K-11000K User Adjustable sRGB Mode Variable RGB Gain and Bias
Preset Video Timings	Factory Presets - 8 modes User Adjustable - 17 settings	Factory Presets - 9 modes User Adjustable - 16 settings	Factory Presets - 26 modes User Adjustable - 15 settings
Signal Input Connector(s)	HD15 (Captive)	HD15 (Captive)	HD15 (Captive)
Power Management	Normal Operation: 100 W (max.) Active Off: 3 W (max.) Power Off: 0 W (approx.)	Normal Operation: 130 W (max.) Active Off: 3 W (max.) Power Off: 0 W (approx.)	Normal Operation: 135 W (max.) Active Off: 3 W (max.) Power Off: 0 W (approx.)
Dimensions (WxHxD)	15.8" x 16.5" x 16.6"	17.9 x 18.6" x 18.3"	19.6" x 19.8" x 19.1"
Weight (Display)	41.2 lbs	56.1 lbs	67.1 lbs
On Screen Controls	Contrast, Brightness, H/V Center, H/V Size, Zoom, Raster Rotation, Pincushion, Pin Balance, Key Stone, Key balance, H/V Convergence, Color Temp. Control, Degauss, Moire Adjust, Control Lock, Reset, Multi Lang. (Eng. Fre., Ger., Spa., Ital., Dut., Swe., Rus., Jap.)	Contrast, Brightness, H/V Center, H/V Size, Zoom, Raster Rotation, Pincushion, Pin Balance, Key Stone, Key balance, H/V Convergence, Color Temp. Control, Degauss, Moire Adjust, Control Lock, Reset, Multi Lang. (Eng. Fre., Ger., Spa., Ital., Dut., Swe., Rus., Jap.)	Contrast, Brightness, Auto Size and Centering, H/V Center, H/V Size, Zoom, Raster Rotation, Pincushion, Pin Balance, Key Stone, Key balance, H/V Convergence, Landing Adjust, Color Temp. Control, RGB Gain and Bias Control, Image Restoration, Color Mode Select (Preset, Easy, Expert , sRGB) Degauss, Moire Adjust, Control Lock, Reset, OSD Position, Multi Lang. (Eng. Fre., Ger., Spa., Ital., Dut., Swe., Rus., Jap.)
Regulation Compliance	Safety Regulation: UL, cUL, DHHS, DNHW, NOM Emissions/EMI: FCC Class B, IC Class B Power Management: International Energy Star Designed For: PC2001, Windows® 95, 98, 2001, Windows NT®, Windows XP®, Macintosh® Compatible Plug and Play: DDC-2B, DDC-2Bi	Safety Regulation: UL, cUL, DHHS, DNHW, NOM Emissions/EMI: FCC Class B, IC Class B Power Management: International Energy Star Designed For: PC2001, Windows® 95, 98, 2001, Windows NT®, Windows XP®, Macintosh® Compatible Plug and Play: DDC-2B, DDC-2Bi	Safety Regulation: UL1950, cUL, DHS, DNHW, NOM, TUV GS Emissions/EMI: FCC Class B, IC Class B, TCO '99/'95 Power Management: International Energy Star Designed For: PC2001, Windows® 95, 98, 2001, Windows NT®, Windows XP®, Macintosh® Compatible Plug and Play: DDC-2B, DDC-2Bi
Supplied Accessories	AC Power Cord, Warranty Card User Manual, HD15 Video Cable (attached)	AC Power Cord, Warranty Card User Manual, HD15 Video Cable (attached)	AC Power Cord, Warranty Card User Manual, HD15 Video Cable (attached)
Limited Warranty	3 years (Parts, Labor, CRT)	3 years (Parts, Labor, CRT)	3 years (Parts, Labor, CRT)
TCO Compliant	N/A	N/A	CPD-E540 - TCO '99 CPD-E540/B - TCO '95

FD Trinitron® CRT



Reduced glare and image distortion

Tilt & Swivel Base



Optimize viewing angle, maximize comfort

DisplayMouse™ OSD



Simple setup and adjustment



SONY

Sony Electronics Inc.
16450 West Bernardo Drive
San Diego, California 92127
For more information: 1.800.352.SONY
Web address: sony.com/displays

Computer Interface: The computer industry lacks standards, and therefore, there are a multitude of varying software packages and add-on hardware options. These displays are not manufactured to any specific software, and Sony does not and cannot make any warranty or representation with respect to the performance of this product with any particular software packages and/or non-Sony add-on hardware option except those mentioned here. Sony hereby disclaims any representations or warranty that this product is compatible with any combination of non-Sony products you may choose to connect. While Sony representatives or Sony authorized dealers may be able to assist you and may make recommendations, they are NOT authorized to vary or waive this disclaimer. Purchasers must determine for themselves the suitability and compatibility of the hardware and software in each and every particular instance. © 2002 Sony Electronics Inc. All rights reserved. Reproduction in whole or in part without written permission is prohibited. Sony, the Sony logo are trademarks of Sony. Microsoft, the Windows Logo, and Windows are registered trademarks of Microsoft Corporation. Mac and Macintosh are trademarks of Apple Inc. All other trademarks are property of their respective owners. Features and specifications are subject to change without notice. These monitors are Energy Star Compliant when used with a computer equipped with VESA Display Power Management Signaling (DPMS). As an International Energy Star Partner, Sony Corporation has determined that this product merits the International Energy Star Program for energy efficiency. The Energy Star emblem does not represent EPA endorsement of any product or service. Screen images are simulated.

Free Manuals Download Website

<http://myh66.com>

<http://usermanuals.us>

<http://www.somanuals.com>

<http://www.4manuals.cc>

<http://www.manual-lib.com>

<http://www.404manual.com>

<http://www.luxmanual.com>

<http://aubethermostatmanual.com>

Golf course search by state

<http://golfingnear.com>

Email search by domain

<http://emailbydomain.com>

Auto manuals search

<http://auto.somanuals.com>

TV manuals search

<http://tv.somanuals.com>