

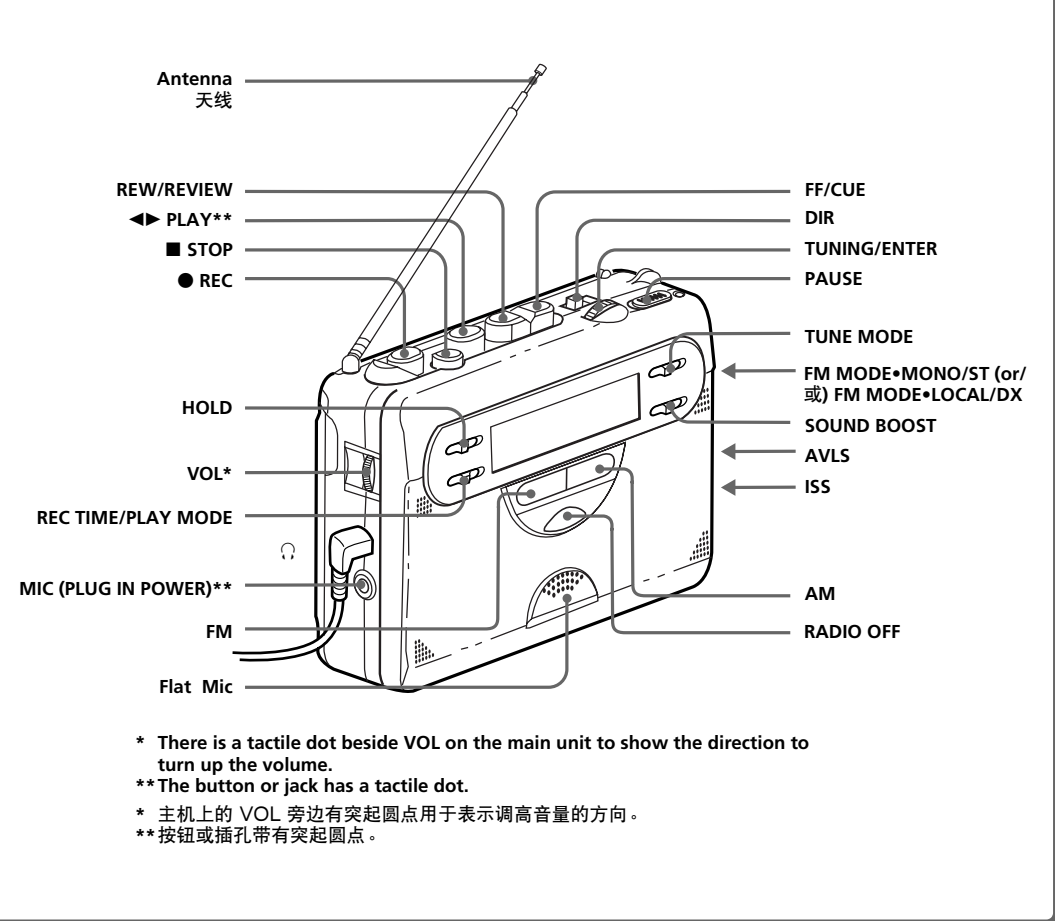
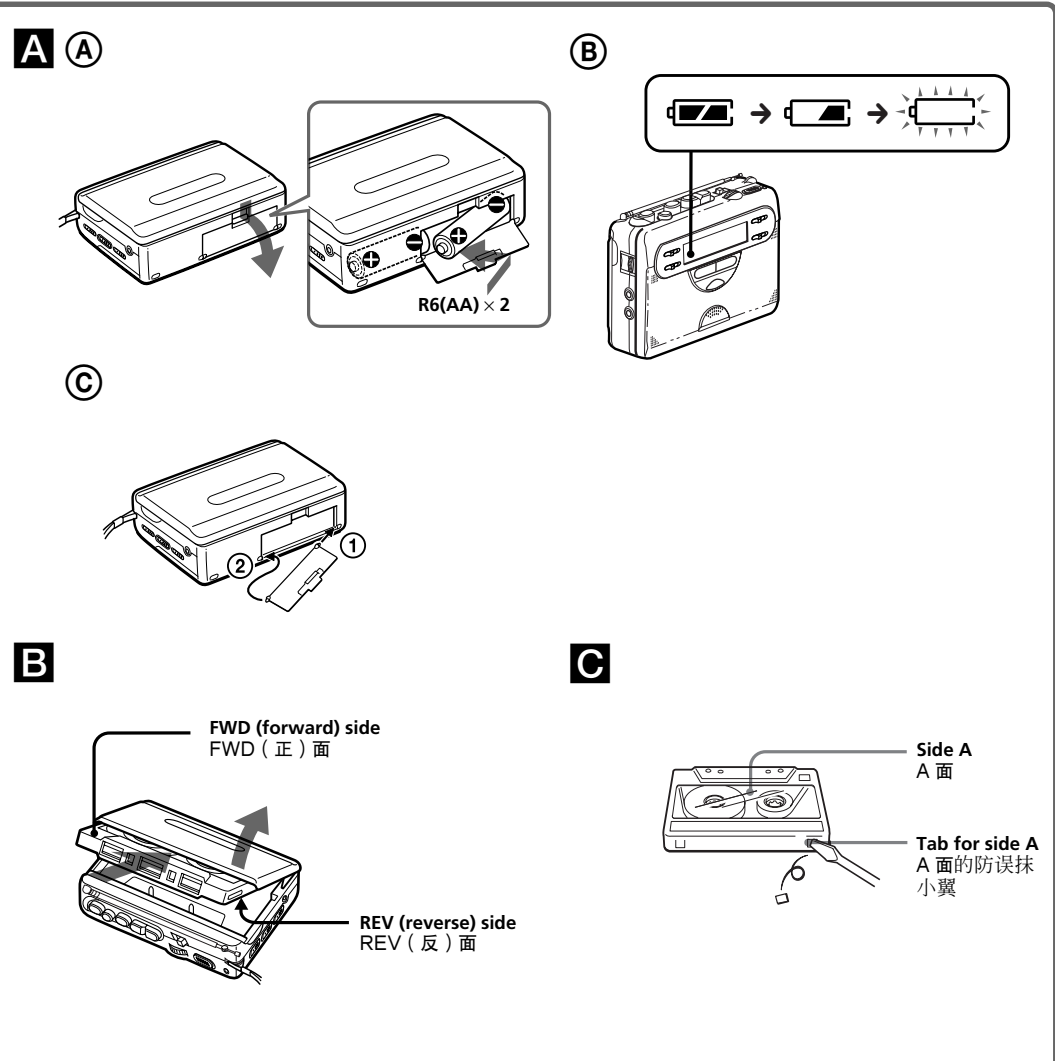
Radio Cassette-Corder

Operating Instructions 使用说明书



WM-GX410

©2004 Sony Corporation Printed in China



http://www.sony.net/

"WALKMAN" is a registered trademark of Sony Corporation to represent Headphone Stereo products.

WALKMAN is a trademark of Sony Corporation.

The validity of the CE marking is restricted to only those countries where it is legally enforced, mainly in the countries EEA (European Economic Area).

CE 标志的有效性，仅限于那些有法律限制的国家，主要在 EEA（欧洲经济区）国家。

English

Preparations

To insert batteries **A**-**A**

Slide open the battery compartment lid, and insert two R6 (size AA) dry batteries (supplied with "Sony World Model" only) with correct polarity.

Replace the batteries with new ones when "□" flashes in the display. **A**-**B**

Notes

- For maximum performance we recommend that you use Sony alkaline batteries.
- Be sure to replace both batteries within 2 minutes. Otherwise, the preset radio stations will be cancelled.

To attach the battery compartment lid, if it is accidentally detached

Attach it as illustrated. **A**-**C**

Recording

Notes

- If the record-protect tab is broken, you cannot record on that side.
- Tapes recorded with the REC TIME/PLAY MODE switch in the DOUBLE position cannot be played properly on a cassette player/tape recorder without the REC TIME/PLAY MODE switch function.
- Use new batteries when recording.
- If a howling occurs, turn down the volume.
- When recording with the microphone, the sound to be recorded cannot be heard through the speakers.

- Insert a normal (TYPE I) tape. **B**
To record on both sides:
Insert the cassette with the side to be first recorded on as the FWD side, and set DIR to FWD.
To record on one side only:
Insert the cassette with the side to be recorded on as the REV side, and set DIR to REV.
- Set REC TIME/PLAY MODE to the desired position.
NORMAL (4.8 cm/s): for optimum sound. Recommended for normal recordings.
DOUBLE (2.4 cm/s): for double recording time (for example, 120 minutes using both sides of a 60-minute cassette). Suitable for recording conferences, dictations, etc. Not recommended to record music.
- Select a recording source.
To record with the built-in microphone (Flat Mic):
Place the unit on a hard surface (such as a desk) with the cassette holder side down, so that the microphone can record effectively.
To record from the radio:
Tune in to the station you want to record (see "Listening to the Radio").
- Press ● REC. ◀▶ PLAY is pressed simultaneously and recording starts. The recording level is automatically adjusted.

If you have started recording from the FWD side, recording will switch to the REV side automatically at the end of the FWD side.

To	Press/switch
Pause recording	PAUSE in the direction of the arrow
Stop recording	■ STOP
Start recording during playback	● REC during playback
Review the portion just recorded	Press and hold REW/REVIEW during recording. Release to listen.

To reduce noise while recording AM programs

Set the ISS (Interference Suppress Switch) to the position that reduces noise the most.

To monitor the recording sound

You can monitor the recording sound through headphones/earphones. Adjust monitoring level using VOL.

Notes on recording

- The recording level is fixed.
- Adjusting the volume or setting AVLS (see "Using Other Functions") will not affect the recording level. These controls only change the sound level you hear.
- Actual recording will start about 2 seconds after you press ● REC. Press ● REC about 2 seconds before the moment you want to start recording, or you will miss the beginning of your recording.
- When recording on both sides, recording will not be made for about 10 seconds while the tape is switching sides.
- Do not use a high-position (TYPE II) or metal (TYPE IV) tape. If you do, the sound may be distorted when you play back the tape, or the previous recording may not be erased completely.

- Do not connect or disconnect the headphones/earphones to/from the ◯ jack while recording from the radio. The recording condition may change abruptly, or noise may be recorded.
- When recording with the microphone, do not place it near a lamp cord or a fluorescent lamp as this may cause interference noise.
- For other operations, stop recording first.
- DIR will not work while recording. Do not force changing the setting, as the unit may malfunction.
- The frequency will change if you switch TUNE MODE while recording the radio.

To prevent a tape from being accidentally recorded over **C**

Break off the tabs from side A and/or B. To reuse the tape for recording, cover the tab hole with adhesive tape.

Recording from various sound sources

To record with an external microphone

Connect an external microphone to the MIC (PLUG IN POWER) jack.
Use a microphone such as the ECM-DS70P (not supplied).
When using a plug-in-power system microphone, the power to the microphone is supplied from this unit.

Playing a Tape

- Insert a normal (TYPE I) tape. **B**
- Press RADIO OFF to turn off the radio.
- Set REC TIME/PLAY MODE to the same position as that used for recording. To playback commercially available music tape, etc., select NORMAL.
- Press ◀▶ PLAY.

To	Press/switch
Stop playback	■ STOP
Pause playback	PAUSE in the direction of the arrow
Fast-forward or rewind*	FF/CUE or REW/REVIEW during stop
Search forward/backward during playback (CUE/REVIEW)	Press and hold FF/CUE or REW/REVIEW during playback and release it at the point you want
Switch playback to the other side**	DIR to FWD or REV

* If you leave the unit after the tape has been wound or rewound, the batteries will be consumed rapidly. Be sure to press ■ STOP.

** Playback will switch to the REV side automatically at the end of the FWD side.

Note

Do not open the cassette holder while the tape is running.

Using Other Functions

Protecting Your Hearing — AVLS (Automatic Volume Limiter System) (Only when using headphones/earphones)

Set AVLS to LIMIT. The maximum volume is kept down to protect your ears.

Listening with Powerful Sound (Only when using headphones/earphones)

Set SOUND BOOST to ON to obtain the Sound Boost effect which emphasizes both treble and bass.

Note

When you set AVLS to LIMIT, the SOUND BOOST effect is reduced.

To Use the Speakers

Disconnect the headphones/earphones from the ◯ jack. The sound will play from the speakers. When the speakers are in use, the AVLS and SOUND BOOST function will not operate.

Locking the Controls

Slide the HOLD switch in the direction of the arrow to lock the controls. The HOLD function only locks the radio operation buttons and TUNING/ENTER.

中文

准备工作

安装电池 **A**-**A**

滑开电池室盖：按正确极性插入两节 R6 (AA) 干电池（仅随“Sony 世界型号”提供）。

“□”在显示窗中闪烁时，即请更换电池。 **A**-**B**

注

- 为获得最佳效果，建议您使用 Sony 牌碱电池。
- 一定要在 2 分钟内换装好两个电池。否则，预约电台都将被解除掉。

如果电池室盖意外脱落，要安装电池室盖

如图所示，安装电池室盖。 **A**-**C**

录音

- 如果防误抹小翼已被折断，则无法在该面录音。
- 使 REC TIME/PLAY MODE 开关置于 DOUBLE 位置时录制的录音带可能无法在没有 REC TIME/PLAY MODE 开关功能的磁带/录音带播放器上正常播放。
- 录音时，请使用新的电池。
- 如果声音太大，请调低音量。
- 当用麦克风录音时，所录的声音是不能通过扬声器听到的。

- 插入一盒标准型 (TYPE I) 录音带。 **B**
要在两面录音时：
将要先录音的面作为 FWD 面插入盒带并把 DIR 设定于 FWD。
只要录一面时：
将要录音的面作为 REV 面插入盒带并把 DIR 设定于 REV。

- 把 REC TIME/PLAY MODE 设定于所要位置。
NORMAL (4.8cm/s): 用于为获得最佳音响，最好请用正常模式进行录音。
DOUBLE (2.4cm/s): 用于双倍录音时间（例如，使用 60 分盒带的双面可录 120 分钟）。适用于会议，口授记录等的录音。但，不适用于于录音乐。

- 选择录音源。
要用内装麦克风录音时 (Flat Mic):
使盒带架一面朝下，将本机放置在坚硬的表面（如桌面）上，从而使麦克风录音更加有效。
要从收音机录音时：
请调入您想录音的电台（参见“听收音机”）。

- 按 ● REC. ◀▶ PLAY 也同时被按下而开始录音。录音电平能自动调整。

如果从 FWD 面开始录音，则当 FWD 面录音结束时，将自动切换至 REV 面进行录音。

要	请按/切换
暂停录音	按箭头方向 PAUSE (暂停)
停止录音	■ STOP
播放中开始录音	播放中按 ● REC
检阅刚录的部分	录音中按住 REW/REVIEW。释放了按钮去听。

要在录 AM 节目时减小噪声

请将 ISS（干扰抑制开关）设定于能将噪声减至最小的位置。

监听录音

可通过头戴耳机/耳机监听录音。使用 VOL 调节监听声级。

录音须知

- 录音电平被固定。
- 调节音量或设置 AVLS（参见“使用其它功能”）将不会影响录音声级。这些控制只会更改您听到的声级。
- 实际录音将在您滑动 ● REC 约 2 秒钟之后开始。请在您要开始录音时刻的约 2 秒钟之前滑动 ● REC，否则您将错过录音的开始部分。
- 在两面录音时，在录音带换面过程中，录音将有约 10 秒钟不进行。
- 请勿用高位 (TYPE II) 或金属 (TYPE IV) 型的录音带录音。否则播放录音带时声音可能会失真，以前的录音内容也可能不会被完全抹消。
- 从收音机录音时，请勿将头戴耳机/耳机接到/拔出 ◯ 插孔。否则录音条件可能会突然改变，也可能录下噪音。
- 用麦克风录音时，请勿将麦克风靠近电灯线或日光灯，以避免噪音干扰。
- 要进行其它操作，请先停止录音。
- 录音中，DIR 功能是不起作用的。请不要强制设定。否则机器可能会故障。
- 录收音机节目当中，您如果切换了 TUNE MODE，频率即将起变化。

要防止录音带被误录时 **C**

请折断 A 面和/或 B 面的防误抹小翼。要重新用该录音带录音，用胶带盖住折断防误抹小翼后的缺口。

使用不同音源录音

使用外置麦克风录音

将外置麦克风连接至 MIC(PLUG IN POWER) 插孔。

使用 ECM-DS70P 等麦克风（未附带）。
使用插上电源系统麦克风时，麦克风电源由本机提供。

播放录音带

- 插入一盒标准型 (TYPE I) 录音带。 **B**
- 按 RADIO OFF 以关掉收音机。
- 将 REC TIME/PLAY MODE 的位置设置为与录音时所用的相同的位置。要播放商用音乐录音带等格式磁带，请选择 NORMAL。
- 按 ◀▶ PLAY。

要	请按/切换
停止播放	■ STOP
暂停播放	按箭头方向 PAUSE (暂停)
快进绕或重绕*	停止中按 FF/CUE 或 REW/REVIEW
播放时向前/向后搜索 (CUE/REVIEW)	播放时按住 FF/CUE 或 REW/REVIEW，在要播放的地方将其松开
换播放另一面**	把 DIR 切换为 FWD 或 REV

* 当磁带已绕完或重绕完时，如果仍放置机器不管，将迅速消耗电池。请即按 ■ STOP。

** 当 FWD 面播放结束时，将自动切换至 REV 面进行播放。

注

在磁带运转中，不可打开盒带座。

使用其它功能

保护听觉 — AVLS (自动音量限制系统) (当使用头戴耳机/耳机时为限)
把 AVLS 设定于 LIMIT。便可限制最大的音量以保护您的耳朵。

聆听震撼音效 (当使用头戴耳机/耳机时为限)
将 SOUND BOOST 设置为 ON，以获得 Sound Boost（增强音效）效果，使高音和低音同时得到增强。

注

如果将 AVLS 设置为 LIMIT，SOUND BOOST（增强音效）效果将会减弱。

要用扬声器时

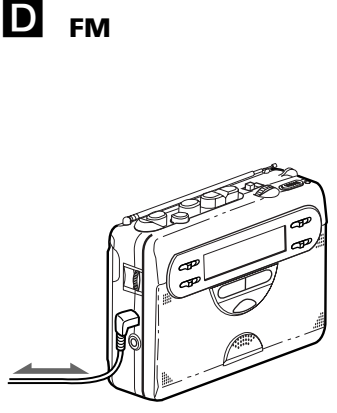
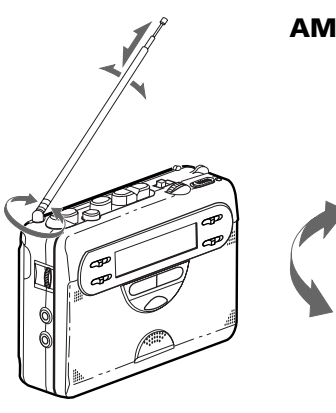
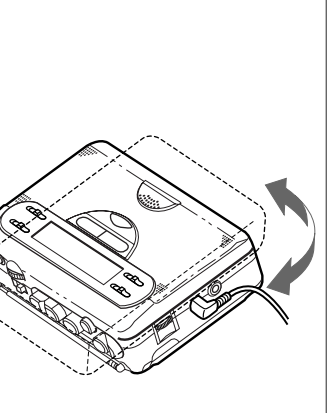
从 ◯ 插孔拔出头戴耳机/耳机。本机将从扬声器放音。

当使用扬声器时，AVLS 和 SOUND BOOST 功能是不起作用的。

锁住控制器

按箭头方向滑动 HOLD 开关锁住控制器。HOLD 功能只能锁住收音机操作按钮和 TUNING/ENTER。

(接反面)

FM	AM
	
When using headphones/earphones 使用头戴耳机/耳机时	When using speakers 使用扬声器时
	

<div>Specifications</div> <div> <table> <tbody><tr> <th>Frequency range</th><td></td><td></td></tr> <tr> <th>Area*</th><th>FM (MHz)</th><th>AM(kHz)</th></tr> <tr> <td>Eur</td><td>87.5 - 108</td><td>531 - 1 602</td></tr> <tr> <td>USA</td><td>87.5 - 108</td><td>530 - 1 710</td></tr> <tr> <td>JpN</td><td>76 - 90</td><td>531 - 1 710</td></tr> </tbody></table> <p><small>* Eur: European and other countries, USA: USA, Canada, and Central and South America, JpN: Japan.</small></p> <table> <tbody><tr> <th>Frequency response</th><td>Playback: 40 - 15 000 Hz Recording: 100 - 8 000 Hz</td></tr> <tr> <th>Input</th><td>Microphone (MIC) jack</td></tr> <tr> <th>Output</th><td>Headphones (♯) jack Load impedance 8 - 300 Ω</td></tr> <tr> <th>Power requirements</th><td>3 V DC: batteries R6 (size AA) × 2</td></tr> <tr> <th>Power output</th><td>Speaker 500 mW + 500 mW (JEITA*)</td></tr> <tr> <th>Dimensions (w/h/d)</th><td>Approx. 112.0 × 82.5 × 35.0 mm (4 ¹/₂ × 3 ¹/₄ × 1 ⁷/₁₆ inches), excl. projecting parts and controls</td></tr> <tr> <th>Mass</th><td>Approx. 200 g (7.1oz) (main unit only)</td></tr> <tr> <th>Supplied accessories</th><td>Stereo headphones or earphones (1) Sony dry battery R6P(SR) (2) ("Sony World Model" only)</td></tr> </tbody></table> <p><small>Design and specifications are subject to change without notice.</small></p></div>	Frequency range			Area*	FM (MHz)	AM(kHz)	Eur	87.5 - 108	531 - 1 602	USA	87.5 - 108	530 - 1 710	JpN	76 - 90	531 - 1 710	Frequency response	Playback: 40 - 15 000 Hz Recording: 100 - 8 000 Hz	Input	Microphone (MIC) jack	Output	Headphones (♯) jack Load impedance 8 - 300 Ω	Power requirements	3 V DC: batteries R6 (size AA) × 2	Power output	Speaker 500 mW + 500 mW (JEITA*)	Dimensions (w/h/d)	Approx. 112.0 × 82.5 × 35.0 mm (4 ¹ / ₂ × 3 ¹ / ₄ × 1 ⁷ / ₁₆ inches), excl. projecting parts and controls	Mass	Approx. 200 g (7.1oz) (main unit only)	Supplied accessories	Stereo headphones or earphones (1) Sony dry battery R6P(SR) (2) ("Sony World Model" only)	<div> <table> <tbody><tr> <th>Battery life* (Approx. hours)</th><td></td><td></td></tr> <tr> <th></th><th>Sony alkaline LR6(SG)**</th><th>Sony R6P(SR)</th></tr> <tr> <th>(using headphones/earphones)</th><td></td><td></td></tr> <tr> <td>playback</td><td>24</td><td>6</td></tr> <tr> <td>radio</td><td>48</td><td>15</td></tr> <tr> <td>mic recording</td><td>20</td><td>4.5</td></tr> <tr> <td>radio recording</td><td>12</td><td>3</td></tr> <tr> <th>(using the speakers)</th><td></td><td></td></tr> <tr> <td>playback</td><td>10</td><td>2.5</td></tr> <tr> <td>radio</td><td>17.5</td><td>5</td></tr> <tr> <td>radio recording</td><td>6.5</td><td>1</td></tr> </tbody></table> <p><small>* Measured value by the standard of JEITA (Japan Electronics and Information Technology Industries Association). (Using a Sony HF series cassette tape)</small></p> <p><small>**When using Sony LR6 (SG) alkaline dry batteries (produced in Japan).</small></p> <div>Note</div> <p>The battery life may be shorter depending on the operating condition, the surrounding temperature and battery type.</p></div>	Battery life* (Approx. hours)				Sony alkaline LR6(SG)**	Sony R6P(SR)	(using headphones/earphones)			playback	24	6	radio	48	15	mic recording	20	4.5	radio recording	12	3	(using the speakers)			playback	10	2.5	radio	17.5	5	radio recording	6.5	1
Frequency range																																																																	
Area*	FM (MHz)	AM(kHz)																																																															
Eur	87.5 - 108	531 - 1 602																																																															
USA	87.5 - 108	530 - 1 710																																																															
JpN	76 - 90	531 - 1 710																																																															
Frequency response	Playback: 40 - 15 000 Hz Recording: 100 - 8 000 Hz																																																																
Input	Microphone (MIC) jack																																																																
Output	Headphones (♯) jack Load impedance 8 - 300 Ω																																																																
Power requirements	3 V DC: batteries R6 (size AA) × 2																																																																
Power output	Speaker 500 mW + 500 mW (JEITA*)																																																																
Dimensions (w/h/d)	Approx. 112.0 × 82.5 × 35.0 mm (4 ¹ / ₂ × 3 ¹ / ₄ × 1 ⁷ / ₁₆ inches), excl. projecting parts and controls																																																																
Mass	Approx. 200 g (7.1oz) (main unit only)																																																																
Supplied accessories	Stereo headphones or earphones (1) Sony dry battery R6P(SR) (2) ("Sony World Model" only)																																																																
Battery life* (Approx. hours)																																																																	
	Sony alkaline LR6(SG)**	Sony R6P(SR)																																																															
(using headphones/earphones)																																																																	
playback	24	6																																																															
radio	48	15																																																															
mic recording	20	4.5																																																															
radio recording	12	3																																																															
(using the speakers)																																																																	
playback	10	2.5																																																															
radio	17.5	5																																																															
radio recording	6.5	1																																																															

<div>规格</div> <div> <table> <tbody><tr> <th>频率范围</th><td></td><td></td></tr> <tr> <th>地区*</th><th>FM (MHz)</th><th>AM(kHz)</th></tr> <tr> <td>Eur</td><td>87.5 - 108</td><td>531 - 1 602</td></tr> <tr> <td>USA</td><td>87.5 - 108</td><td>530 - 1 710</td></tr> <tr> <td>JpN</td><td>76 - 90</td><td>531 - 1 710</td></tr> </tbody></table> <p><small>* Eur: 欧洲和其它国家， USA: 美国、加拿大和中南美， JpN: 日本。</small></p> <table> <tbody><tr> <th>频率范围</th><td>放音：40 - 15 000Hz 录音：100 - 8 000Hz</td></tr> <tr> <th>输入</th><td>麦克风(MIC)插孔</td></tr> <tr> <th>输出</th><td>头戴耳机(♯)插孔 负载阻抗 8 - 300 Ω</td></tr> <tr> <th>电源</th><td>3V DC：电池 R6（3号，AA）× 2</td></tr> <tr> <th>电源输出</th><td>扬声器 500 mW + 500 mW (JEITA*)</td></tr> <tr> <th>尺寸（宽／高／纵深）</th><td>大约 112.0 × 82.5 × 35.0 mm，不含突起部分和控制器</td></tr> <tr> <th>质量</th><td>大约 200 g（只包括主机）</td></tr> <tr> <th>附件</th><td>立体声头戴耳机或耳机 (1) Sony干电池R6P（SR）(2)（“Sony世界型号”为限）</td></tr> </tbody></table> <p><small>设计和规格有所变更时，恕不另行通知。</small></p></div>	频率范围			地区*	FM (MHz)	AM(kHz)	Eur	87.5 - 108	531 - 1 602	USA	87.5 - 108	530 - 1 710	JpN	76 - 90	531 - 1 710	频率范围	放音：40 - 15 000Hz 录音：100 - 8 000Hz	输入	麦克风(MIC)插孔	输出	头戴耳机(♯)插孔 负载阻抗 8 - 300 Ω	电源	3V DC：电池 R6（3号，AA）× 2	电源输出	扬声器 500 mW + 500 mW (JEITA*)	尺寸（宽／高／纵深）	大约 112.0 × 82.5 × 35.0 mm，不含突起部分和控制器	质量	大约 200 g（只包括主机）	附件	立体声头戴耳机或耳机 (1) Sony干电池R6P（SR）(2)（“Sony世界型号”为限）	<div> <table> <tbody><tr> <th>电池寿命（大约时数）*</th><td></td><td></td></tr> <tr> <th></th><th>Sony 碱电池 LR6(SG)**</th><th>Sony R6P(SR)</th></tr> <tr> <th>(使用头戴耳机/耳机时)</th><td></td><td></td></tr> <tr> <td>播放</td><td>24</td><td>6</td></tr> <tr> <td>听收音机</td><td>48</td><td>15</td></tr> <tr> <td>麦克风录音</td><td>20</td><td>4.5</td></tr> <tr> <td>收音机录音</td><td>12</td><td>3</td></tr> <tr> <th>(使用扬声器时)</th><td></td><td></td></tr> <tr> <td>播放</td><td>10</td><td>2.5</td></tr> <tr> <td>听收音机</td><td>17.5</td><td>5</td></tr> <tr> <td>收音机录音</td><td>6.5</td><td>1</td></tr> </tbody></table> <p><small>* JEITA (Japan Electronics and Information Technology Industries Association) 标准的测定值。（使用 Sony HF 系列盒带）</small></p> <p><small>**使用 LR6 (SG) 型 Sony 碱电池（日本制）时。</small></p> <div>注</div> <p>电池寿命，可能因操作条件、环境温度 and 电池型式而缩短些。</p></div>	电池寿命（大约时数）*				Sony 碱电池 LR6(SG)**	Sony R6P(SR)	(使用头戴耳机/耳机时)			播放	24	6	听收音机	48	15	麦克风录音	20	4.5	收音机录音	12	3	(使用扬声器时)			播放	10	2.5	听收音机	17.5	5	收音机录音	6.5	1
频率范围																																																																	
地区*	FM (MHz)	AM(kHz)																																																															
Eur	87.5 - 108	531 - 1 602																																																															
USA	87.5 - 108	530 - 1 710																																																															
JpN	76 - 90	531 - 1 710																																																															
频率范围	放音：40 - 15 000Hz 录音：100 - 8 000Hz																																																																
输入	麦克风(MIC)插孔																																																																
输出	头戴耳机(♯)插孔 负载阻抗 8 - 300 Ω																																																																
电源	3V DC：电池 R6（3号，AA）× 2																																																																
电源输出	扬声器 500 mW + 500 mW (JEITA*)																																																																
尺寸（宽／高／纵深）	大约 112.0 × 82.5 × 35.0 mm，不含突起部分和控制器																																																																
质量	大约 200 g（只包括主机）																																																																
附件	立体声头戴耳机或耳机 (1) Sony干电池R6P（SR）(2)（“Sony世界型号”为限）																																																																
电池寿命（大约时数）*																																																																	
	Sony 碱电池 LR6(SG)**	Sony R6P(SR)																																																															
(使用头戴耳机/耳机时)																																																																	
播放	24	6																																																															
听收音机	48	15																																																															
麦克风录音	20	4.5																																																															
收音机录音	12	3																																																															
(使用扬声器时)																																																																	
播放	10	2.5																																																															
听收音机	17.5	5																																																															
收音机录音	6.5	1																																																															


English
<div>Listening to the Radio</div> <div> <p>Note</p> <p>For customers who purchased the “Sony World Model”: Switch the area to “Eur” or “USA” when you use this Walkman outside of Japan. For operations, refer to “Receiving Stations Outside Your Country.”</p> <ol style="list-style-type: none">Press FM or AM to select the band and to turn on the radio. For manual tuning <ol style="list-style-type: none">Set TUNE MODE to MANUAL. Rotate TUNING/ENTER to tune in to the desired station. For preset tuning <ol style="list-style-type: none">Set TUNE MODE to PRESET. Rotate TUNING/ENTER to recall the desired preset station. <p>To use preset tuning, store the stations first (see “Presetting Radio Stations”).</p></div>


<div>3</div> <div> <p>Press and hold FM or AM pressed in step 2 for 2 seconds or more.</p> <p>The preset stations of the selected band will be played for about 5 seconds each. (During DAPS the indicators in the display flash.)</p></div>
<div>4</div> <div> <p>Press FM or AM again to select the station while the desired preset station is being played.</p></div>

<div>Notes</div> <div> <ul style="list-style-type: none">In step 3 or 4, if you select a band which you did not select in step 2 by pressing FM or AM, the newly selected band will be played normally. Until a station is selected in step 4, the DAPS function turned on in step 3 will continue.</div>

Receiving Stations Outside Your Country (excluding European, Saudi Arabian, and Chinese models)
<div>To turn off the radio</div> <div> <p>Press RADIO OFF.</p></div>

<div>To improve the broadcast reception</div> <div> <ul style="list-style-type: none">For AM: Reorient the unit itself. For FM: When using the headphones/earphones, extend the headphones/earphones cord (antenna). When using the speakers, lift up and adjust the angle of antenna or connect the headphones/earphones to MIC jack for best reception. If the reception is still not good, adjust FM MODE.</div>

<div>Note</div> <div> <p>The antenna can be damaged when you move the antenna with excessive force.</p></div>	
--	---

<div>Note</div> <div> <p>If no areas are preset, the preset numbers retain their former setting.</p></div>	
---	---

<div>Note</div> <div> <p>If no areas are preset, the preset numbers retain their former setting.</p></div>	
---	---

<div>3</div> <div> <p>Press RADIO OFF and turn off the radio.</p></div>
<div>2</div> <div> <p>Press and hold FM until “Eur”, “USA”, or “JpN” flashes in the display.</p></div>
<div>3</div> <div> <p>Rotate TUNING/ENTER to select “Eur”, “USA”, or “JpN” and press TUNING/ENTER.</p></div>
<div>4</div> <div> <p>Tune in to stations and store as necessary following the procedure of “Listening to the Radio” and “Presetting Radio Stations”.</p></div>

<div>3</div> <div> <p>Press and hold FM or AM pressed in step 2 for 2 seconds or more.</p> <p>The preset stations of the selected band will be played for about 5 seconds each. (During DAPS the indicators in the display flash.)</p></div>
<div>4</div> <div> <p>Press FM or AM again to select the station while the desired preset station is being played.</p></div>

<div>3</div> <div> <p>Press and hold FM or AM pressed in step 2 for 2 seconds or more.</p> <p>The preset stations of the selected band will be played for about 5 seconds each. (During DAPS the indicators in the display flash.)</p></div>
<div>4</div> <div> <p>Press FM or AM again to select the station while the desired preset station is being played.</p></div>

<div>3</div> <div> <p>Press and hold FM or AM pressed in step 2 for 2 seconds or more.</p> <p>The preset stations of the selected band will be played for about 5 seconds each. (During DAPS the indicators in the display flash.)</p></div>
<div>4</div> <div> <p>Press FM or AM again to select the station while the desired preset station is being played.</p></div>

<div>3</div> <div> <p>Press and hold FM or AM pressed in step 2 for 2 seconds or more.</p> <p>The preset stations of the selected band will be played for about 5 seconds each. (During DAPS the indicators in the display flash.)</p></div>
<div>4</div> <div> <p>Press FM or AM again to select the station while the desired preset station is being played.</p></div>

<div>3</div> <div> <p>Press and hold FM or AM pressed in step 2 for 2 seconds or more.</p> <p>The preset stations of the selected band will be played for about 5 seconds each. (During DAPS the indicators in the display flash.)</p></div>
<div>4</div> <div> <p>Press FM or AM again to select the station while the desired preset station is being played.</p></div>

<div>3</div> <div> <p>Press and hold FM or AM pressed in step 2 for 2 seconds or more.</p> <p>The preset stations of the selected band will be played for about 5 seconds each. (During DAPS the indicators in the display flash.)</p></div>
<div>4</div> <div> <p>Press FM or AM again to select the station while the desired preset station is being played.</p></div>

<div>3</div> <div> <p>Press and hold FM or AM pressed in step 2 for 2 seconds or more.</p> <p>The preset stations of the selected band will be played for about 5 seconds each. (During DAPS the indicators in the display flash.)</p></div>
<div>4</div> <div> <p>Press FM or AM again to select the station while the desired preset station is being played.</p></div>

<div>3</div> <div> <p>Press and hold FM or AM pressed in step 2 for 2 seconds or more.</p> <p>The preset stations of the selected band will be played for about 5 seconds each. (During DAPS the indicators in the display flash.)</p></div>
<div>4</div> <div> <p>Press FM or AM again to select the station while the desired preset station is being played.</p></div>

<div>3</div> <div> <p>Press and hold FM or AM pressed in step 2 for 2 seconds or more.</p> <p>The preset stations of the selected band will be played for about 5 seconds each. (During DAPS the indicators in the display flash.)</p></div>
<div>4</div> <div> <p>Press FM or AM again to select the station while the desired preset station is being played.</p></div>

<div>3</div> <div> <p>Press and hold FM or AM pressed in step 2 for 2 seconds or more.</p> <p>The preset stations of the selected band will be played for about 5 seconds each. (During DAPS the indicators in the display flash.)</p></div>
<div>4</div> <div> <p>Press FM or AM again to select the station while the desired preset station is being played.</p></div>

<div>3</div> <div> <p>Press and hold FM or AM pressed in step 2 for 2 seconds or more.</p> <p>The preset stations of the selected band will be played for about 5 seconds each. (During DAPS the indicators in the display flash.)</p></div>
<div>4</div> <div> <p>Press FM or AM again to select the station while the desired preset station is being played.</p></div>

中文
<div>收听收音机</div> <div> <p>注</p> <p>购买“Sony 世界型号”的顾客：当在日本以外使用本“Walkman”时，请把地区切换到“Eur”或“USA”。操作方法，请参看“接收国外电台”。</p></div>

<div>1</div> <div> <p>按 FM 或 AM 选择波段并打开收音机。</p></div>
<div>2</div> <div> <p>要手动调谐时</p> <ol style="list-style-type: none">把 TUNE MODE 设定于 MANUAL。 旋转 TUNING/ENTER 以调入所要的电台。</div>


<div>1</div> <div> <p>按 FM 或 AM 选择波段并打开收音机。</p></div>
<div>2</div> <div> <p>要手动调谐时</p> <ol style="list-style-type: none">把 TUNE MODE 设定于 MANUAL。 旋转 TUNING/ENTER 以调入所要的电台。</div>


<div>1</div> <div> <p>按 FM 或 AM 选择波段并打开收音机。</p></div>
<div>2</div> <div> <p>要手动调谐时</p> <ol style="list-style-type: none">把 TUNE MODE 设定于 PRESET。 旋转 TUNING/ENTER 以选出所要的预约电台。</div>


<div>3</div> <div> <p>要使用预约调谐时，请先预约好电台（参见“预约电台”）。</p></div>
--

<div>3</div> <div> <p>要关掉收音机时</p> <p>请按 RADIO OFF。</p></div>

<div>3</div> <div> <p>要改善广播接收效果时</p> <ul style="list-style-type: none">收听 AM 节目时：请调转机器本身的方位。 收听 FM 节目时：使用头戴耳机/耳机，请展开头戴耳机/耳机线（天线）。若使用扬声器，请拉出天线并调整其角度，或将头戴耳机/耳机连接到 MIC 插孔以获得最佳的接收效果。如果接收效果仍然很差，则调节 FM MODE。</div>
--

<div>注</div> <div> <p>如果转动时用力过大，可能会使天线受到损坏。</p></div>	
--	---

<div>注</div> <div> <p>如果转动时用力过大，可能会使天线受到损坏。</p></div>	
--	---

<div>注</div> <div> <p>如果转动时用力过大，可能会使天线受到损坏。</p></div>	
--	---

<div>3</div> <div> <p>您最多可以预调 30 个电台－FM 20 个，AM 10 个（在 JpN 地区*，最多 16 个电台－FM 和 AM 各 8 个）。</p> <p>* 若有所限，请参见“接收国外电台”。</p></div>
--

<div>3</div> <div> <p>您最多可以预调 30 个电台－FM 20 个，AM 10 个（在 JpN 地区*，最多 16 个电台－FM 和 AM 各 8 个）。</p> <p>* 若有所限，请参见“接收国外电台”。</p></div>
--

<div>3</div> <div> <p>您最多可以预调 30 个电台－FM 20 个，AM 10 个（在 JpN 地区*，最多 16 个电台－FM 和 AM 各 8 个）。</p> <p>* 若有所限，请参见“接收国外电台”。</p></div>
--

<div>3</div> <div> <p>您最多可以预调 30 个电台－FM 20 个，AM 10 个（在 JpN 地区*，最多 16 个电台－FM 和 AM 各 8 个）。</p> <p>* 若有所限，请参见“接收国外电台”。</p></div>
--

<div>3</div> <div> <p>您最多可以预调 30 个电台－FM 20 个，AM 10 个（在 JpN 地区*，最多 16 个电台－FM 和 AM 各 8 个）。</p> <p>* 若有所限，请参见“接收国外电台”。</p></div>
--

<div>3</div> <div> <p>您最多可以预调 30 个电台－FM 20 个，AM 10 个（在 JpN 地区*，最多 16 个电台－FM 和 AM 各 8 个）。</p> <p>* 若有所限，请参见“接收国外电台”。</p></div>
--

<div>3</div> <div> <p>您最多可以预调 30 个电台－FM 20 个，AM 10 个（在 JpN 地区*，最多 16 个电台－FM 和 AM 各 8 个）。</p> <p>* 若有所限，请参见“接收国外电台”。</p></div>
--

<div>3</div> <div> <p>您最多可以预调 30 个电台－FM 20 个，AM 10 个（在 JpN 地区*，最多 16 个电台－FM 和 AM 各 8 个）。</p> <p>* 若有所限，请参见“接收国外电台”。</p></div>
--

<div>3</div> <div> <p>您最多可以预调 30 个电台－FM 20 个，AM 10 个（在 JpN 地区*，最多 16 个电台－FM 和 AM 各 8 个）。</p> <p>* 若有所限，请参见“接收国外电台”。</p></div>
--

<div>3</div> <div> <p>您最多可以预调 30 个电台－FM 20 个，AM 10 个（在 JpN 地区*，最多 16 个电台－FM 和 AM 各 8 个）。</p> <p>* 若有所限，请参见“接收国外电台”。</p></div>
--

<div>3</div> <div> <p>您最多可以预调 30 个电台－FM 20 个，AM 10 个（在 JpN 地区*，最多 16 个电台－FM 和 AM 各 8 个）。</p> <p>* 若有所限，请参见“接收国外电台”。</p></div>
--

<div>3</div> <div> <p>您最多可以预调 30 个电台－FM 20 个，AM 10 个（在 JpN 地区*，最多 16 个电台－FM 和 AM 各 8 个）。</p> <p>* 若有所限，请参见“接收国外电台”。</p></div>
--

<div>3</div> <div> <p>您最多可以预调 30 个电台－FM 20 个，AM 10 个（在 JpN 地区*，最多 16 个电台－FM 和 AM 各 8 个）。</p> <p>* 若有所限，请参见“接收国外电台”。</p></div>
--

<div>3</div> <div> <p>您最多可以预调 30 个电台－FM 20 个，AM 10 个（在 JpN 地区*，最多 16 个电台－FM 和 AM 各 8 个）。</p> <p>* 若有所限，请参见“接收国外电台”。</p></div>
--

<div>3</div> <div> <p>您最多可以预调 30 个电台－FM 20 个，AM 10 个（在 JpN 地区*，最多 16 个电台－FM 和 AM 各 8 个）。</p> <p>* 若有所限，请参见“接收国外电台”。</p></div>
--

接收国外电台（欧洲、沙地阿拉伯和中国型号除外）
<div>1</div> <div> <p>按 RADIO OFF 关掉收音机。</p></div>
<div>2</div> <div> <p>按住 FM 直到 “Eur”、“USA” 或 “JpN” 在显示屏上闪烁为止。</p></div>

<div>1</div> <div> <p>按 RADIO OFF 关掉收音机。</p></div>
<div>2</div> <div> <p>按住 FM 直到 “Eur”、“USA” 或 “JpN” 在显示屏上闪烁为止。</p></div>

<div>1</div> <div> <p>按 RADIO OFF 关掉收音机。</p></div>
<div>2</div> <div> <p>按住 FM 直到 “Eur”、“USA” 或 “JpN” 在显示屏上闪烁为止。</p></div>

<div>1</div> <div> <p>按 RADIO OFF 关掉收音机。</p></div>

<div>1</div> <div> <p>按 RADIO OFF 关掉收音机。</p></div>

<div>1</div> <div> <p>按 RADIO OFF 关掉收音机。</p></div>

<div>1</div> <div> <p>按 RADIO OFF 关掉收音机。</p></div>

<div>1</div> <div> <p>按 RADIO OFF 关掉收音机。</p></div>

<div>1</div> <div> <p>按 RADIO OFF 关掉收音机。</p></div>

<div>1</div> <div> <p>按 RADIO OFF 关掉收音机。</p></div>

<div>1</div> <div> <p>按 RADIO OFF 关掉收音机。</p></div>

<div>1</div> <div> <p>按 RADIO OFF 关掉收音机。</p></div>

<div>1</div> <div> <p>按 RADIO OFF 关掉收音机。</p></div>

<div>1</div> <div> <p>按 RADIO OFF 关掉收音机。</p></div>

<div>1</div> <div> <p>按 RADIO OFF 关掉收音机。</p></div>

<div>1</div> <div> <p>按 RADIO OFF 关掉收音机。</p></div>

<div>1</div> <div> <p>按 RADIO OFF 关掉收音机。</p></div>

<div>1</div> <div> <p>按 RADIO OFF 关掉收音机。</p></div>

<div>1</div> <div> <p>按 RADIO OFF 关掉收音机。</p></div>

<div>1</div> <div> <p>按 RADIO OFF 关掉收音机。</p></div>

<div>1</div> <div> <p>按 RADIO OFF 关掉收音机。</p></div>

<div>1</div> <div> <p>按 RADIO OFF 关掉收音机。</p></div>

<div>1</div> <div> <p>按 RADIO OFF 关掉收音机。</p></div>

<div>1</div> <div> <p>按 RADIO OFF 关掉收音机。</p></div>

<div>1</div> <div> <p>按 RADIO OFF 关掉收音机。</p></div>

<div>1</div> <div> <p>按 RADIO OFF 关掉收音机。</p></div>

<div>1</div> <div> <p>按 RADIO OFF 关掉收音机。</p></div>

<div>1</div> <div> <p>按 RADIO OFF 关掉收音机。</p></div>

<div>1</div> <div> <p>按 RADIO OFF 关掉收音机。</p></div>

<div>1</div> <div> <p>按 RADIO OFF 关掉收音机。</p></div>

<div>1</div> <div> <p>按 RADIO OFF 关掉收音机。</p></div>

<div>1</div> <div> <p>按 RADIO OFF 关掉收音机。</p></div>

<div>1</div> <div> <p>按 RADIO OFF 关掉收音机。</p></div>

<div>1</div> <div> <p>按 RADIO OFF 关掉收音机。</p></div>

Free Manuals Download Website

<http://myh66.com>

<http://usermanuals.us>

<http://www.somanuals.com>

<http://www.4manuals.cc>

<http://www.manual-lib.com>

<http://www.404manual.com>

<http://www.luxmanual.com>

<http://aubethermostatmanual.com>

Golf course search by state

<http://golfingnear.com>

Email search by domain

<http://emailbydomain.com>

Auto manuals search

<http://auto.somanuals.com>

TV manuals search

<http://tv.somanuals.com>