

FM/AM PLL Synthesized Clock Radio

Operating Instructions

DREAM MACHINE

DREAM MACHINE is a trademark of Sony Corporation.

ICF-C793

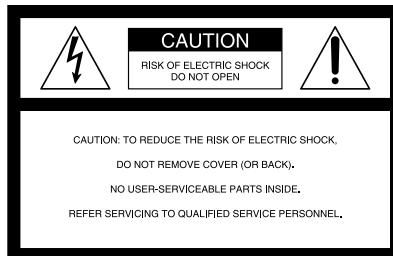
Sony Corporation © 1999 Printed in Malaysia

Sony  line

<http://www.world.sony.com/>

WARNING

To prevent fire or shock hazard, do not expose the unit to rain or moisture.



This symbol is intended to alert the user to the presence of uninsulated "dangerous voltage" within the product's enclosure that may be of sufficient magnitude to constitute a risk of electric shock to persons.



This symbol is intended to alert the user to the presence of important operating and maintenance (servicing) instructions in the literature accompanying the appliance.

* The graphical symbols are at the bottom of the unit.

You are cautioned that any changes or modifications not expressly approved in this manual could void your authority to operate this equipment.

INFORMATION

This equipment has been tested and found to comply with the limits for a Class B digital device, pursuant to Part 15 of the FCC Rules. These limits are designed to provide reasonable protection against harmful interference in a residential installation. This equipment generates, uses, and can radiate radio frequency energy and, if not installed and used in accordance with the instructions, may cause harmful interference to radio communications. However, there is no guarantee that interference will not occur in a particular installation. If this equipment does cause harmful interference to radio or television reception, which can be determined by turning the equipment off and on, the user is encouraged to try to correct the interference by one or more of the following measures:

- Reorient or relocate the receiving antenna.
- Increase the separation between the equipment and receiver.
- Connect the equipment into an outlet on a circuit different from that to which the receiver is connected.
- Consult the dealer or an experienced radio/TV technician for help.

WARRANTY

4-557-145-01(T1)

Before You Begin

Thank you for choosing the Sony Dream Machine. The Dream Machine will give you many hours of reliable service and listening pleasure.

Before operating your unit, please read these instructions thoroughly and retain them for future reference.

Features

- Dual alarm FM/AM (ICF-C793) PLL (phase locked loop) synthesized clock radio.
- Triple display—main display, and two sub-displays for the alarms.
- LCD with backlight, and brightness adjustment for the backlight.
- Date button to display the year, month and date.
- Easy radio preset—with the pressing of a button.
- D.S.T. (Daylight Saving Time)—Summer time adjustment (one-hour skip function).
- 5 random station presets.
- Radio and buzzer alarms, as well as a snooze function.
- Self-powered backup that enables the current time and memory to be stored for about 30 minutes without batteries when the power supply is interrupted.

Precautions

- Operate the unit only on 120 V AC, 60 Hz.
- Disconnect the cord by grasping the plug. Never pull it by the cord.
- Do not leave the unit in a location near a heat source such as a radiator or air duct, or in a place subject to direct sunlight, excessive dust, mechanical vibration, or shock.
- Do not place the unit on surfaces (rugs, blankets, etc.) or near materials (curtains, draperies) that block the ventilation holes.
- Should any liquid or solid object fall into the unit, unplug the unit and have it checked by qualified personnel before operating it further.
- When the casing becomes soiled, clean it with a soft cloth dampened with a mild detergent solution. Never use abrasive cleaners or chemical solvents, as they may mar the casing.

If you have any questions, please consult your nearest Sony dealer.

Specifications

Time display
12-hour system

Frequency range
FM: 87.5–108 MHz
AM: 530–1,710 kHz

Channel steps
FM: 0.1 MHz (fixed)
AM: 10 kHz (fixed)

Speaker
Approx. 6.6 cm (2⁵/₈ in) dia.

Power output
150 mW (at 10% harmonic distortion)

Power requirements
120 V AC, 60 Hz

Dimensions
Approx. 113 x 147.5 x 104.5 mm (w/h/d)
(4 1/2 x 5 7/8 x 4 1/8 in) incl. projecting parts and controls

Mass
Approx. 730 g (1 lb 10 oz)

Design and specifications are subject to change without notice.

IMPORTANT SAFEGUARDS

For your protection, please read these safety instructions completely before operating the appliance, and keep this manual for future reference. Carefully observe all warnings, precautions and instructions on the appliance and in the operating instructions, and adhere to them.

INSTALLATION

Water and Moisture

Do not use powerline operated appliances near water - for example, near a bathtub, washbowl, kitchen sink, or laundry tub, in a wet basement, or near a swimming pool, etc.

Heat

Do not place the appliance near or over a radiator or heat register, or where it is exposed to direct sunlight.

Ventilation

The slots and openings in the cabinet are provided for necessary ventilation. To ensure reliable operation of the appliance, and to protect it from overheating, these slots and openings must never be blocked or covered.

- Never cover the slots and openings with a cloth or other materials.
- Never block the slots and openings by placing the appliance on a bed, sofa, rug or other similar surface.
- Never place the appliance in a confined space, such as a bookcase, or built-in cabinet, unless proper ventilation is provided.

Accessories

Do not place the appliance on an unstable cart, stand, tripod, bracket, or table. The appliance may fall, causing serious injury to a child or an adult, and serious damage to the appliance. Use only a cart, stand, tripod, bracket, or table recommended by Sony.

-An appliance and cart combination should be moved with care. Quick stops, excessive force, and uneven surfaces may cause the appliance and cart combination to overturn.

Wall or Ceiling Mounting

If your appliance can be mounted to a wall or ceiling, mount it only as recommended by Sony.

USE

Power Source

This appliance should be operated only from the type of power source indicated on the marking label. If you are not sure of the type of electrical power supplied to your home, consult your dealer or local power company. For those appliances designed to operate from battery power, or other sources, refer to the operating instructions.

Grounding or Polarization

This appliance is equipped with a polarized AC power cord plug (a plug having one blade wider than the other), or with a three-wire grounding type plug (a plug having a third pin for grounding). Follow the instructions below:

-For the appliance with a polarized AC power cord plug:

This plug will fit into the power outlet only one way. This is a safety feature. If you are unable to insert the plug fully into the outlet, try reversing the plug. If the plug should still fail to fit, contact your electrician to have a suitable outlet installed. Do not defeat the safety purpose of the polarized plug by forcing it in.

-For the appliance with a three-wire grounding type AC plug:

This plug will only fit into a grounding-type power outlet. This is a safety feature. If you are unable to insert the plug into the outlet, contact your electrician to have a suitable outlet installed. Do not defeat the safety purpose of the grounding plug.

Overloading

Do not overload wall outlets, extension cords or convenience receptacles beyond their capacity, since this can result in fire or electric shock.

When not in use

Unplug the power cord of the appliance from the outlet when left unused for a long period of time. To disconnect the cord, pull it out by grasping the plug. Never pull the plug out by the cord.

Power-Cord Protection

Route the power cord so that it is not likely to be walked on or pinched by items placed upon or against them, paying particular attention to the plugs, receptacles, and the point where the cord exits from the appliance.

Lightning

For added protection for this appliance during a lightning storm, or when it is left unattended and unused for long periods of time, unplug it from the wall outlet and disconnect the antenna or cable system. This will prevent damage to the appliance due to lightning and powerline surges.

Object and Liquid Entry

Never push objects of any kind into the appliance through openings as they may touch dangerous voltage points or short out parts that could result in a fire or electric shock. Never spill liquid of any kind on the appliance.

Cleaning

Unplug the appliance from the wall outlet before cleaning or polishing it. Do not use liquid cleaners or aerosol cleaners. Use a cloth lightly dampened with water for cleaning the exterior of the appliance. Clean the appliance only as recommended by Sony.

Attachments

Do not use attachments not recommended by Sony, as they may cause hazards.

ANTENNAS

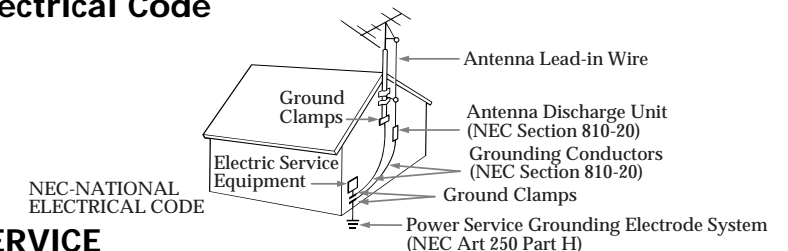
Outdoor Antenna Grounding

If an outdoor antenna or cable system is installed, follow the precautions below.

An outdoor antenna system should not be located in the vicinity of overhead power lines or other electric light or power circuits, or where it can come in contact with such power lines or circuits. WHEN INSTALLING AN OUTDOOR ANTENNA SYSTEM, EXTREME CARE SHOULD BE TAKEN TO KEEP FROM CONTACTING SUCH POWER LINES OR CIRCUITS AS CONTACT WITH THEM IS ALMOST INVARIABLY FATAL.

Be sure the antenna system is grounded so as to provide some protection against voltage surges and built-up static charges. Section 810 of the National Electrical Code provides information with respect to proper grounding of the mast and supporting structure, grounding of the lead-in wire to an antenna discharge unit, size of grounding conductors, location of antenna-discharge unit, connection to grounding electrodes, and requirements for the grounding electrode.

Antenna Grounding According to the National Electrical Code



SERVICE

Damage Requiring Service

Unplug the appliance from the wall outlet and refer servicing to qualified service personnel under the following conditions:

- When the power cord or plug is damage or frayed.
- If liquid has been spilled or objects have fallen into the appliance.
- If the appliance has been exposed to rain or water.
- The appliance does not appear to operate normally or exhibits a marked change in performance.
- This indicates a need for service.
- If the appliance does not operate normally when following the operating instructions, adjust only those controls that are specified in the operating instructions. Improper adjustment of other controls may result in damage and will often require extensive work by a qualified technician to restore the appliance to normal operation.
- If the appliance has been subject to excessive shock by being dropped, or the cabinet has been damaged.

Servicing

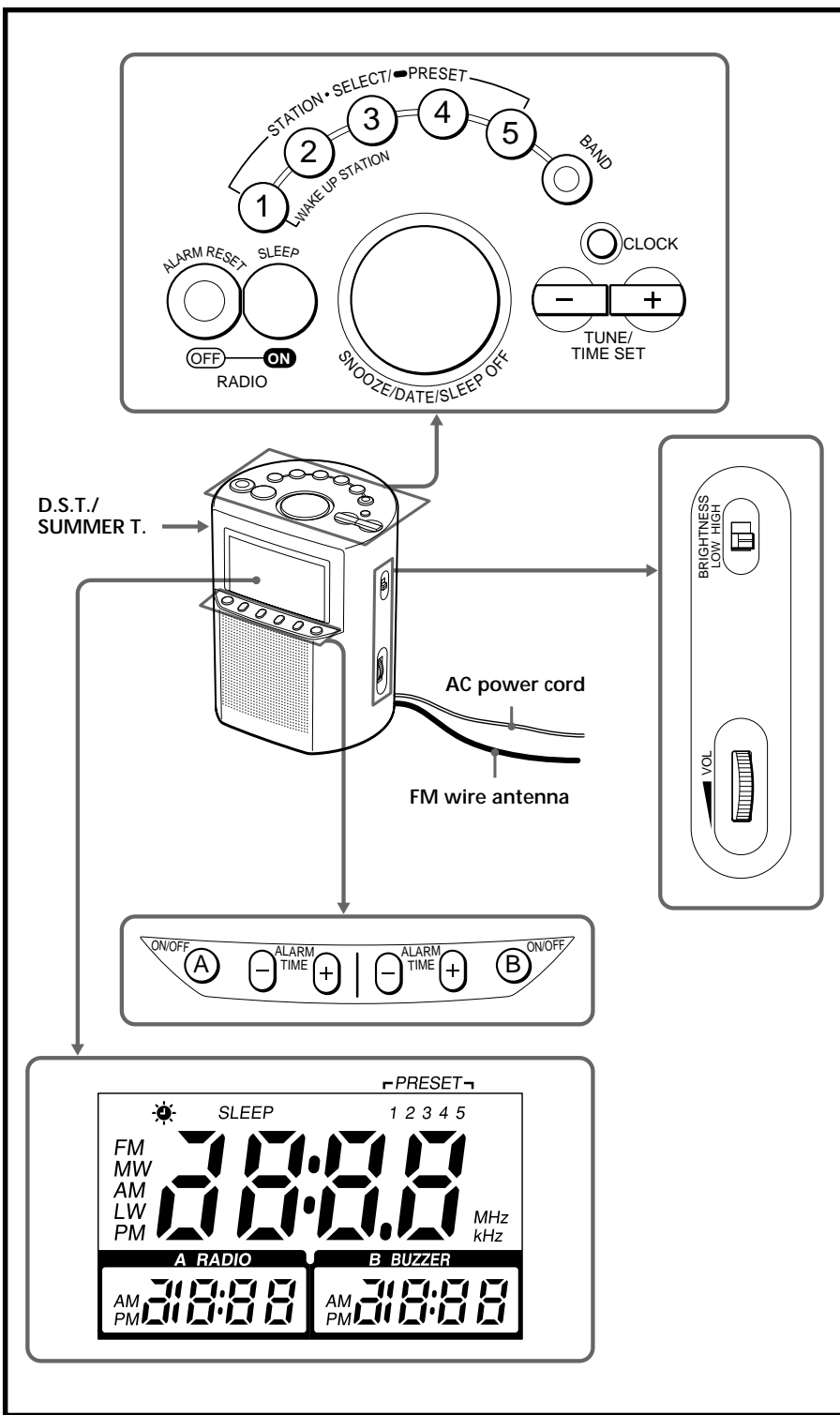
Do not attempt to service the appliance yourself as opening or removing covers may expose you to dangerous voltage or other hazards. Refer all servicing to qualified service personnel.

Replacement parts

When replacement parts are required, be sure the service technician has used replacement parts specified by Sony that have the same characteristics as the original parts. Unauthorized substitutions may result in fire, electric shock, or other hazards.

Safety Check

Upon completion of any service or repairs to the appliance, ask the service technician to perform routine safety checks (as specified by Sony) to determine that the appliance is in safe operating condition.



Setting the Clock

- 1 Plug in the clock radio. The display will flash "AM 12:00".
- 2 Press **CLOCK** for a few seconds. You will hear a beep and the year will start to flash in the display.
- 3 Press **TUNE/TIME SET** + or - until the correct year appears in the display.
- 4 Press **CLOCK** once.
- 5 Repeat steps 3 and 4 to set the month, date, hour, and minute. After setting the minute, press **CLOCK** to start the counting of the seconds.

- To display the year and date, press **SNOOZE/DATE/SLEEP OFF** once for the date, and within 2 seconds press it again for the year. The display shows the date or year for a few seconds and then changes back to the current time.
- To set the current time rapidly, hold down the + or - button.
- In step 5, when you press **CLOCK** after the minute setting to activate the clock, the seconds start counting from zero.

To change the display to the daylight saving time (summer time) indication

Press **D.S.T./SUMMER T.** "☀" is displayed and the time indication changes to summer time. To deactivate the summer time function, press **D.S.T./SUMMER T.** again.

Playing the Radio

Manual Tuning

- 1 Press **RADIO ON** to turn on the radio. The display shows the band and frequency for a few seconds and then changes back to the current time.
- 2 Press **BAND** repeatedly to select the desired band.
- 3 Use **TUNE/TIME SET** + or - to tune in to the desired station.
- 4 Adjust volume using **VOL**.

- To turn off the radio, press **RADIO OFF**.
- To improve reception
 - FM:** Extend the FM wire antenna fully to increase reception sensitivity.
 - AM:** Rotate the unit horizontally for optimum reception. A ferrite bar is built in to the unit. Do not operate the unit over a steel desk or metal surface, as this may lead to interference of reception.
- To check the station being received, press the **TUNE/TIME SET** + or - button lightly. The display shows the band and frequency for a few seconds and then changes back to the current time.
- If the radio alarm comes on while the radio is on, the unit switches to the station on preset button 1 (the **WAKE UP STATION**).

To set the brightness of the backlight

Set **BRIGHTNESS** for the display to H (high) or L (low) according to your preference.

Preset Tuning

You can preset up to five stations for one-touch tuning; one for each of the preset buttons 1 to 5.

Presetting a station

Example: To preset AM 1260 kHz onto preset button 2.

- 1 Press **RADIO ON** to turn on the radio.
- 2 Tune in to the station you want to preset. (See "Manual Tuning".)
- 3 Hold down the desired **STATION•SELECT/PRESET** button (in this case, 2) until you hear two short beeps.



The display shows the frequency for a few seconds and then changes back to the current time.

For the radio alarm, preset the station to be used as the alarm onto preset button 1.

To change a preset station

Tune in manually to the station you want to store and hold down the preset button until you hear two short beeps. The previously stored station will be replaced by the new one.

Tuning in to a preset station

- 1 Press **RADIO ON** to turn on the radio.
- 2 Press the **STATION•SELECT/PRESET** button where the desired station is stored.
- 3 Adjust volume using **VOL**. After a few seconds, the display will return to the current time but the preset button number will remain.

Setting the Alarm

Before setting the time for the radio and buzzer alarms, make sure you have set the current time (See "Setting the Clock"). For the radio alarm, make sure you have preset a radio station onto preset button 1 (See "Preset Tuning").

To Set the Alarm Time

Press and hold down the **ALARM TIME** + or - button located directly under the **A RADIO** or **B BUZZER** display until the desired time appears.

ALARM ON—

To activate the alarm

For the radio alarm:

Press the **ON/OFF A** button located directly under the **A RADIO** display. The **A RADIO** display lights up and shows the alarm time you have set.

For the buzzer alarm:

Press the **ON/OFF B** button located directly under the **B BUZZER** display. The **B BUZZER** display lights up and shows the alarm time you have set.

At the time set, the radio or buzzer alarm will sound for 60 minutes or until turned off.

Notes

- When the alarm comes on at the preset time, the alarm time in the display flashes.
- When the **ALARM TIME** + or - button is held down, the displayed time initially changes in one-minute steps, and after a few seconds, switches to five-minute steps.
- If you do not preset the radio/buzzer alarm time and activate the alarm, the alarm will sound at AM 12:00.
- For the buzzer alarm, the beeping of the alarm becomes more rapid after every few seconds in five progressive stages.

ALARM OFF—

To Stop the Alarm

Press **ALARM RESET** to turn off the alarm.

The alarm will come on again at the same time the next day.

To Cancel the Alarm

For the radio alarm, press the **ON/OFF A** button to switch off the display.

For the buzzer alarm, press the **ON/OFF B** button to switch off the display.

Notes

- The alarm does not function unless you set the clock and activate the **A RADIO** or **B BUZZER** function.
- If both the radio and buzzer alarms are set for the same time, the radio alarm takes precedence.

To doze for a few more minutes

Press **SNOOZE/DATE/SLEEP OFF**.

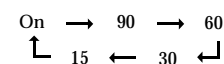
The radio or buzzer turns off but will automatically come on again after about 8 minutes. You can repeat this process as many times as you like.

Setting the Sleep Timer

You can enjoy falling asleep to the radio using the built-in sleep timer that turns off the radio automatically after a preset duration.

Press SLEEP.

The radio turns on. You can set the sleep timer to durations of 90, 60, 30, or 15 minutes. Every push changes the display as follows:



The radio will play for the time you set, then shut off.

- To turn off the radio before the preset time, press **SNOOZE/DATE/SLEEP OFF**.

To Use Both Sleep Timer and Alarm

You can fall asleep to the radio and also be awakened by the radio or buzzer alarm at the preset time.

- 1 Set the alarm. (See "Setting the Alarm".)
- 2 Set the sleep timer. (See "Setting the Sleep Timer".)

Troubleshooting

Should any problem occur with the unit, make the following simple checks to determine whether or not servicing is required. If the problem persists, consult your nearest Sony dealer.

The clock does not show the correct time.

- Has an electrical power outage lasting more than 30 minutes occurred?

The radio or buzzer alarm does not sound at the preset alarm time.

- Has the desired radio or buzzer alarm been activated? (i.e. Is the **A RADIO** or **B BUZZER** display lit?)

The radio alarm is activated but no sound comes on at the preset alarm time.

- Has a station been preset onto preset button 1?

Free Manuals Download Website

<http://myh66.com>

<http://usermanuals.us>

<http://www.somanuals.com>

<http://www.4manuals.cc>

<http://www.manual-lib.com>

<http://www.404manual.com>

<http://www.luxmanual.com>

<http://aubethermostatmanual.com>

Golf course search by state

<http://golfingnear.com>

Email search by domain

<http://emailbydomain.com>

Auto manuals search

<http://auto.somanuals.com>

TV manuals search

<http://tv.somanuals.com>