

# step 1 Hookup

## Quick Start Guide RDR-VX560

- Follow the three steps below to connect, setup and make recordings on your VCR-DVD recorder.
- step 1 Hookup**
- step 2 Setup**
- step 3 Record!**

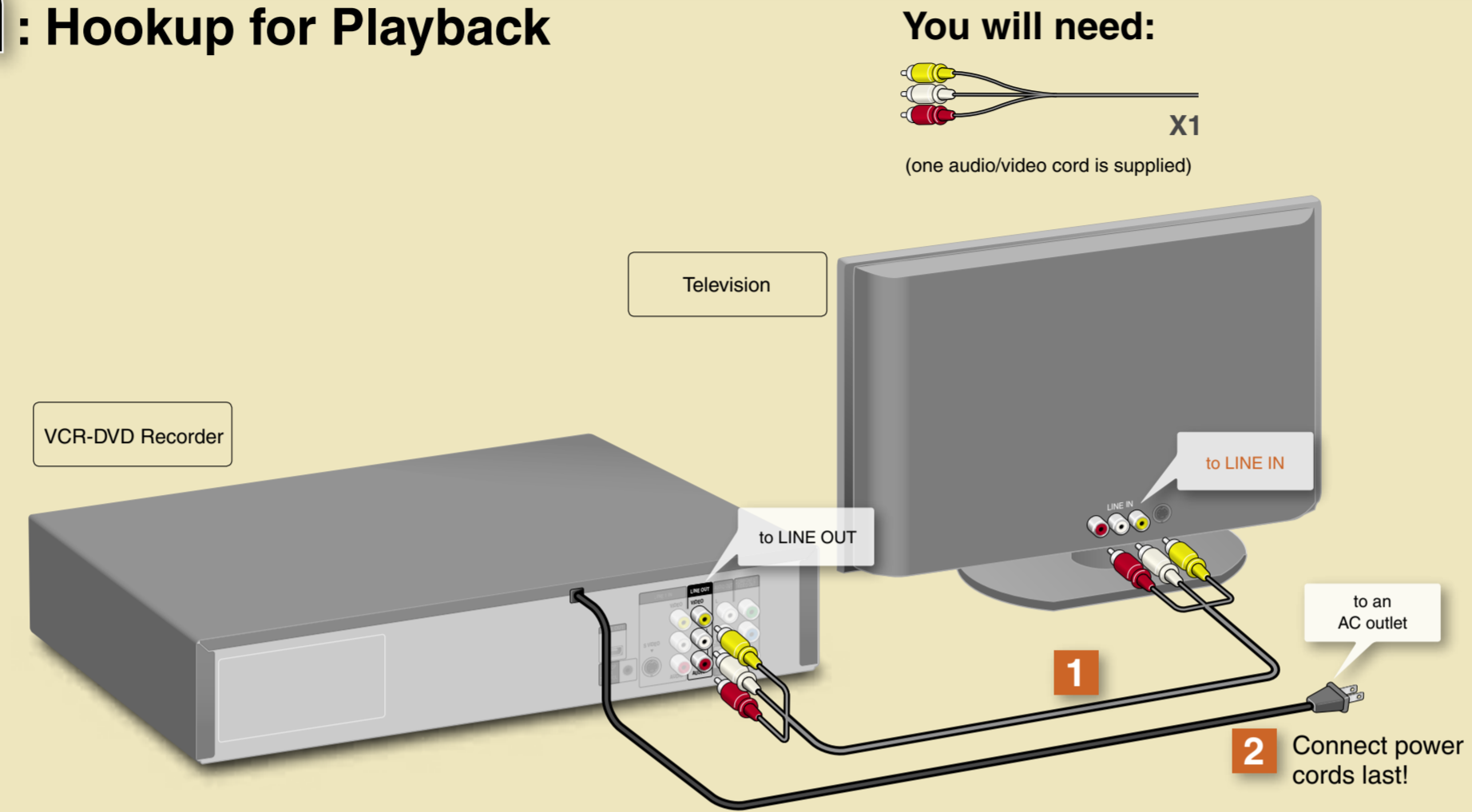
©2008 Sony Corporation  
Printed in China

3-296-718-11(1)  
AK68-01525A

### Select a connection

To enjoy DVD/VCR playback, select connection A. In addition, if you want to record TV programs from a connected tuner, make additional connections by referring to connection B.

#### A: Hookup for Playback



#### B: Hookup for Playback and Recording

##### Before hookup

This DVD-VCR does not include a tuner. To record TV programs on the DVD-VCR from a connected device, you need to connect the DVD-VCR to a tuner that has audio/video output jacks.

**You have:**

- Cable Box With Video/Audio Output ▶ See right
- or -
- Satellite Receiver With Video/Audio Output

**hint**

If you have been using your VCR connected to an antenna, connect this DVD-VCR to the VCR using an audio/video cord. This way, you can record TV programs.

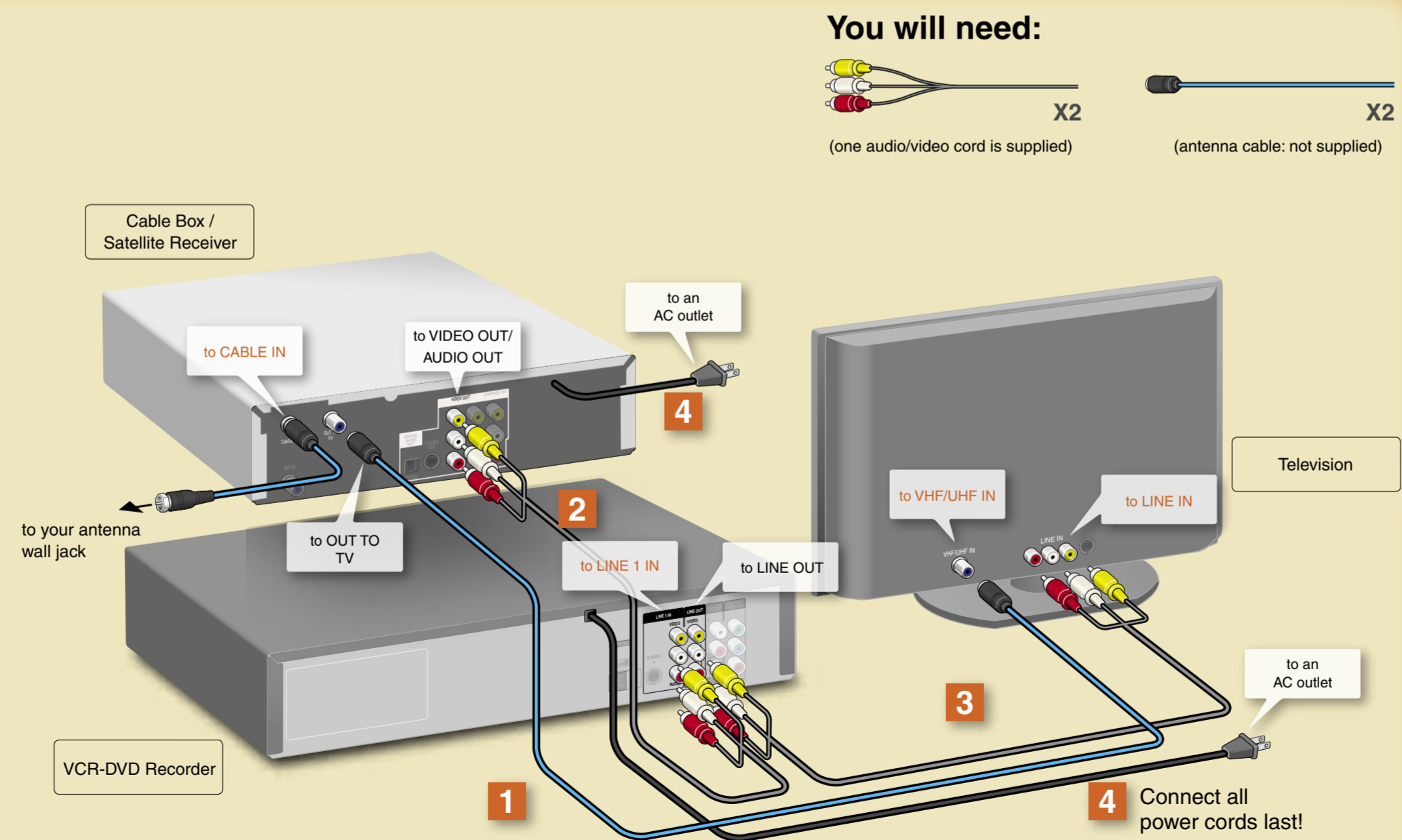
**⚡ If you have neither of the above tuners:**

**You have:**

- Cable Box/Satellite Receiver Without Video/Audio Output**  
→ Please contact your cable service or satellite service company to ask cable box or satellite receiver with video/audio output.
- Cable With No Cable Box**  
→ Please contact your cable service to ask cable box with video/audio output.
- Antenna Only (No Cable TV/No Satellite Receiver)**  
→ You need to subscribe to a cable TV or satellite TV service and to get a cable box or satellite receiver with video/audio output.

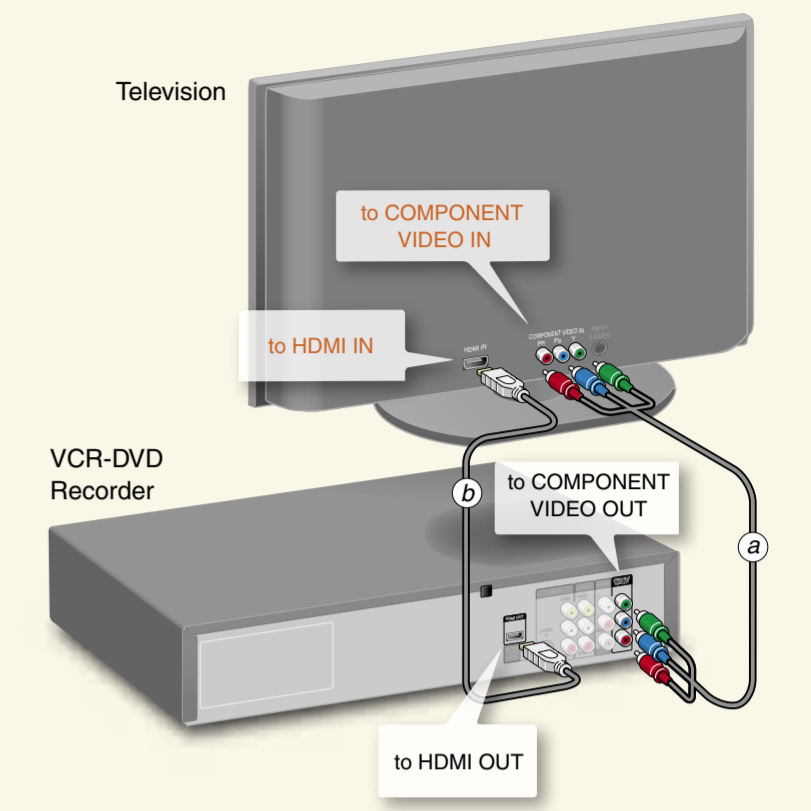
**hint**

For any inquiry, please visit the Sony web site : <http://esupport.sony.com/>



### Optional

#### Connecting a component video cord or an HDMI cord

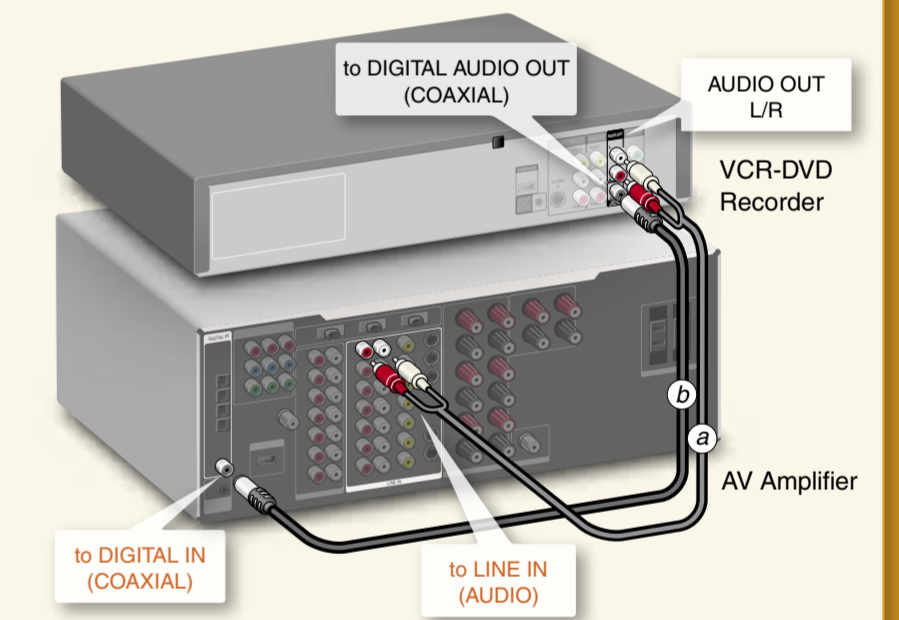


Connect one of the following cords (not supplied) instead of the video cord. (One audio/video cord is supplied.) You will enjoy high quality images.

- (a) Component video cords or (b) HDMI cord

For further explanations, see the Operating Instructions.

#### Connecting an AV amplifier (receiver)



Connect one of the following cords (not supplied).

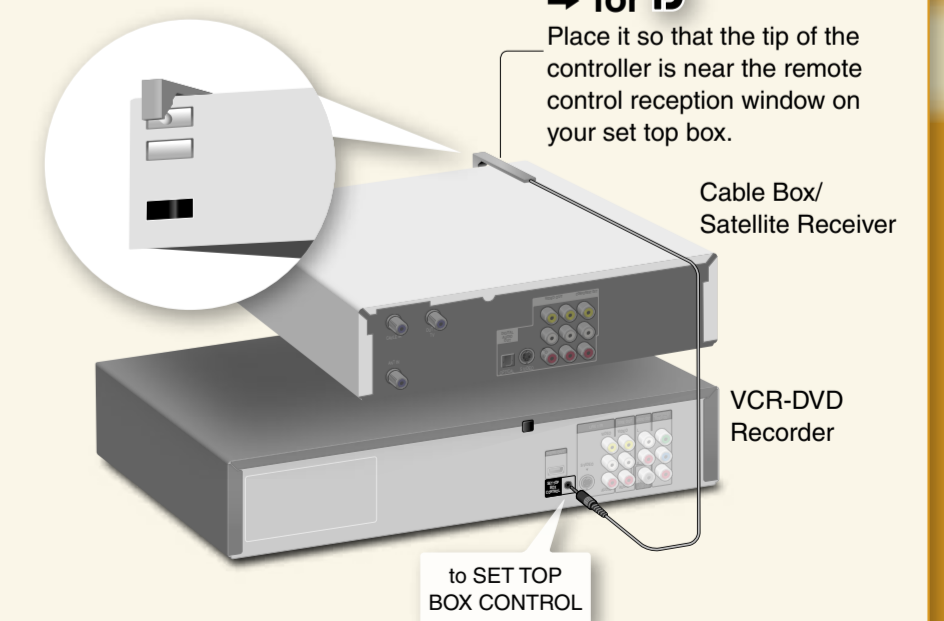
- (a) audio cords or (b) coaxial digital cord

Connecting to an AV amplifier (receiver) with digital cords will enable you to listen to Dolby Digital or DTS surround effects. For further explanations, see "Connecting to Your AV Amplifier (Receiver)" in the Operating Instructions.

#### Connecting the Set Top Box controller

##### → for B

Place it so that the tip of the controller is near the remote control reception window on your set top box.



You can have the recorder control channels on the cable box or satellite receiver for timer recording. Connect the Set Top Box controller (supplied), and select "Yes" in step 6 of Setup on the next page.

# step2 Setup

The Easy Setup display automatically appears on your TV screen when you turn on your recorder for the first time. Follow the steps below to make the minimum number of basic adjustments to use the recorder. If you make a mistake, press **↵** RETURN.

**1** Turn on your TV and any other connected equipment such as your cable box or satellite receiver.

**2** Press **I/⏻** on the VCR-DVD recorder.

**3** Switch the input selector on your TV so that the signal from the recorder appears on your TV screen.



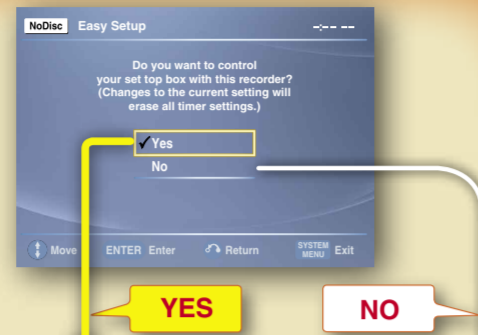
If "Initial settings necessary to operate the DVD recorder will be made. You can change them later using setup." does not appear on your TV screen, select "Easy Setup" from "Setup" in the System Menu.

**4** Press **ENTER**.

**5** Press **↑/↓** to select a language for the on-screen display, then press **ENTER**.

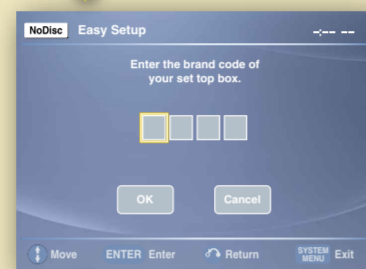


**6** Press **↑/↓** to select whether or not you want to use the Set Top Box control function, then press **ENTER**.



**7** Press the number buttons to enter the brand code of your cable box or satellite receiver. Then select "OK" and press **ENTER**.

Some examples of brand codes are shown on the right.



## Examples of Brand Codes

Cable box brand	Code number
Sony	1006
Scientific Atlanta	0008,0277,0017,00 06,0237,0025,0477, 0207,0877,0003,00 12,0000,0021,1877
Motorola	0476,0276,1476,08 10,1376,1254,0400, 1106
Pace	0237
Samsung	0040,0144,0023,00 03,0070,0000
General Instruments	0476,0011,0014,00 98,0810,0024,0003, 0015,0276

For brand codes other than the above, see the "Cable Box/Satellite Receiver Brand Code" list of the Operating Instructions.

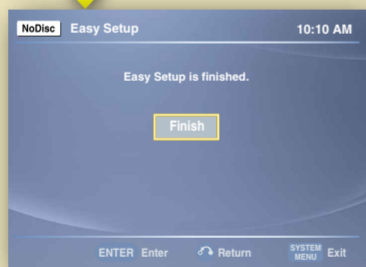


**8** Press **↑/↓** to set the month and press **→**. Set the day, year, hour, minutes, and AM/PM in the same way. Then press **ENTER**.



**9** Press **↑/↓** to select the type of TV you have, then press **ENTER**. If you have a wide-screen TV, select "16:9." If you have a 4:3 screen TV, select either "4:3 Letter Box" (shrink to fit) or "4:3 Pan Scan" (stretch to fit). This will determine how "wide-screen" images are displayed on your TV.

**10** When "Finish" appears, press **ENTER** to complete Easy Setup.



## Test your Set Top Box controller

If you connected a Set Top Box controller, do the following:

**1** Turn on the recorder and the cable box/satellite receiver.

**2** Point the remote at the recorder (not at the cable box/satellite receiver).

**3** Press **CH+/-** and confirm that the channel changes on the cable box/satellite receiver window.

If the recorder does not control your cable box or satellite receiver, see "If you cannot get the recorder to control your cable box/satellite receiver" at the end of "Step 7: Easy Setup" in the Operating Instructions.

# step3 Record!

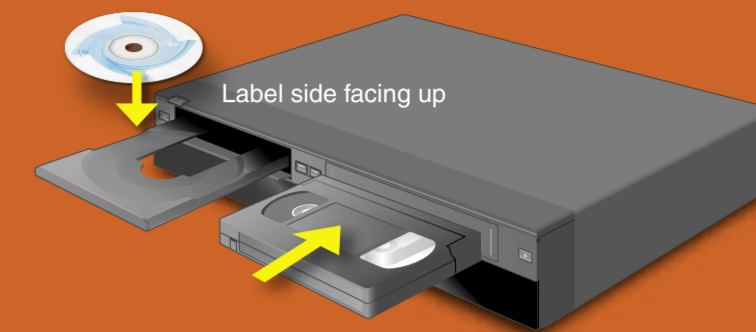
## Insert a DVD Disc

- Press **DVD** to operate the DVD recorder.
- Press **△ OPEN/CLOSE** and place a recordable DVD on the disc tray.
- Press **△ OPEN/CLOSE** again to close the disc tray.

Wait until "LOAD" disappears from the front panel display. See "Quick Guide to Disc Types" in the Operating Instructions for more details about the differences between disc types.

## Insert a VHS Tape

- Press **VIDEO** to operate the VCR.
- Insert a tape with its safety tab in place.



## Record a TV Program

- Press **DVD** to record to a DVD disc. Or, press **VIDEO** to record to a VHS tape.
- Select a channel.

• When using a Set Top Box controller Press **CH+/-** buttons to select the cable box or satellite receiver's channel.

• When not using a Set Top Box controller Press **INPUT** to select input source until "LINE 1" appears in the front panel display. Then select a channel on the connected cable box or satellite receiver.

- Press **REC MODE** repeatedly to select the recording mode.

When recording to a DVD disc: HQ, HSP, SP, LSP, ESP, LP, EP, or SLP HQ offers the best quality picture, but with the shortest recording time. Recording time increases with each successive mode, but the picture quality gradually deteriorates.

When recording to a VHS tape: SP or EP EP (Extended Play) provides recording time three times as long as SP (Standard Play). However, SP produces better picture and audio quality.

- Press **● REC**.

The recorder starts recording. To stop recording, press **■ STOP**.

## Record a TV Program using Timer

- Press **TIMER**.

The Timer menu appears.



- Press **↑/↓** to set Media, Date, Start and End time, Channel or Input source and Rec Mode.

As for selecting "Ch(channel)", see above "Record a TV program." The way to select "Ch(channel)" may differ in the case of a Set Top Box controller.

- Press **ENTER**.

Leave the cable box/satellite receiver turned on and do not change its selected channel until the recorder finishes the timer recording.

## Dub From VHS Tape to DVD

- Insert a recordable disc.
- Insert a source tape.
- Cue the tape at the start point, and press **← VIDEO**.

## From DVD to VHS Tape

- Insert a recordable tape.
- Insert a source disc.
- Select a title on the disc, and press **DVD →**.

Before dubbing, select the recording mode and make the necessary audio settings. For details, see the dubbing section in the Operating Instructions.

## Playback the Recorded DVD Disc

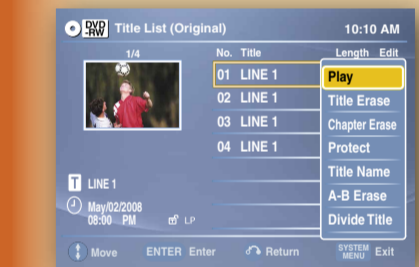
- Press **DVD** to operate the DVD recorder.

- Press **TITLE LIST**.

The Title List menu appears.



- Press **↑/↓** to select the title you want to play and press **ENTER**.



- Press **↑/↓** to select "Play" and press **ENTER**.

Playback starts from the beginning of the title.

## Playback the Recorded VHS Tape

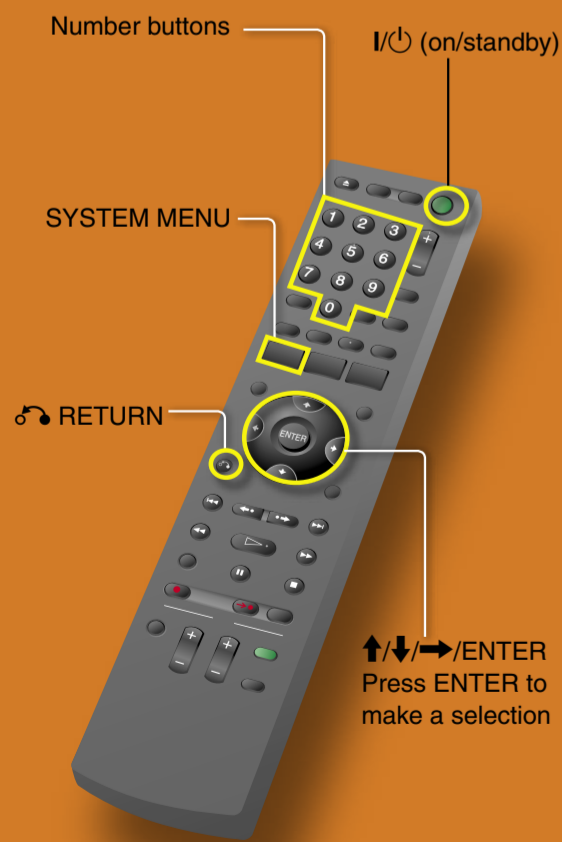
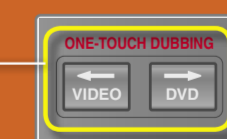
- Press **VIDEO** to operate the VCR.

- Press **◀▶** to find the point you want to start playback.

For further explanations, see "VCR Playback" in the Operating Instructions.

- Press **▶ PLAY**.

Playback starts.



**↑/↓/→/←** ENTER Press **ENTER** to make a selection

## Free Manuals Download Website

<http://myh66.com>

<http://usermanuals.us>

<http://www.somanuals.com>

<http://www.4manuals.cc>

<http://www.manual-lib.com>

<http://www.404manual.com>

<http://www.luxmanual.com>

<http://aubethermostatmanual.com>

Golf course search by state

<http://golfingnear.com>

Email search by domain

<http://emailbydomain.com>

Auto manuals search

<http://auto.somanuals.com>

TV manuals search

<http://tv.somanuals.com>