



J300a

# Contents

Getting to Know Your Phone . . . . .	4
User Guide Symbols . . . . .	5
Calling . . . . .	16
Messaging . . . . .	33
Imaging . . . . .	41
Entertainment . . . . .	43
Connectivity . . . . .	48
More Features . . . . .	53
Troubleshooting . . . . .	63
Additional Information . . . . .	67
Index . . . . .	76

You can find support, information, content downloads  
and an icon glossary at [www.SonyEricsson.com/support](http://www.SonyEricsson.com/support)

## **Sony Ericsson**

GSM 850/1900

First edition (March 2005)

This user guide is published by Sony Ericsson, without any warranty. Improvements and changes to this user guide necessitated by typographical errors, inaccuracies of current information, or improvements to programs and/or equipment, may be made by Sony Ericsson at any time and without notice. Such changes will, however, be incorporated into new editions of this user guide.

All rights reserved.

**©Sony Ericsson Mobile Communications AB, 2005**

Publication number: AE/LZT 108 7959 R1A

Please note: Some of the services in this user guide are not supported by all networks. *This also applies to the GSM International Emergency Number 112.*

Please contact your network operator or service provider if you are in doubt whether you can use a particular service or not.

Please read the *Guidelines for safe and efficient use* and the *Limited warranty* chapters before you use your mobile phone.

Your mobile phone has the capability to download, store and forward additional content, e.g. ringtones. The use of such content may be restricted or prohibited by rights of third parties, including but not limited to restriction under applicable copyright laws. You, and not Sony Ericsson, are entirely responsible for additional content that you download to or forward from your mobile phone. Prior to your use of any additional content, please verify that your intended use is properly licensed or is otherwise authorized. Sony Ericsson does not guarantee the accuracy, integrity or quality of any additional content or any other third party content. Under no circumstances will Sony Ericsson be liable in any way for your improper use of additional content or other third party content.

QuickShare™, PlayNow™ and MusicDJ™ are trademarks or registered trademarks of Sony Ericsson Mobile Communications AB.

T9™ Text Input is a trademark or a registered trademark of Tegic Communications. T9™ Text Input is licensed under one or more of the following: U.S. Pat. Nos. 5,818,437, 5,953,541, 5,187,480, 5,945,928,

and 6,011,554; Canadian Pat. No. 1,331,057, United Kingdom Pat. No. 2238414B; Hong Kong Standard Pat. No. HK0940329; Republic of Singapore Pat. No. 51383; Euro.Pat. No. 0 842 463(96927260.8) DE/DK, FI, FR, IT, NL, PT, ES, SE, GB; and additional patents are pending worldwide.

Java and all Java based trademarks and logos are trademarks or registered trademarks of Sun Microsystems, Inc. in the U.S. and other countries. End-user license agreement for Sun™ Java™ J2ME™.

1 Restrictions: Software is confidential copyrighted information of Sun and title to all copies is retained by Sun and/or its licensors. Customer shall not modify, decompile, disassemble, decrypt, extract, or otherwise reverse engineer Software. Software may not be leased, assigned, or sublicensed, in whole or in part.

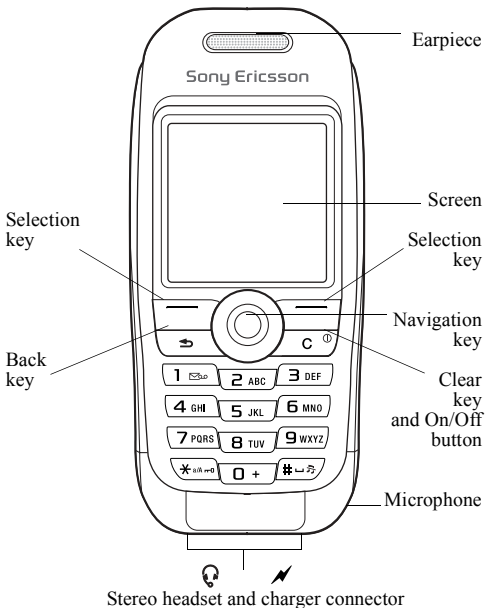
2 Export Regulations: Software, including technical data, is subject to U.S. export control laws, including the U.S. Export Administration Act and its associated regulations, and may be subject to export or import regulations in other countries. Customer agrees to comply strictly with all such regulations and acknowledges that it has the responsibility to obtain licenses to export, re-export, or import Software. Software may not be downloaded, or otherwise exported or re-exported (i) into, or to a national or resident of, Cuba, Iraq, Iran, North Korea, Libya, Sudan, Syria (as such listing may be revised from time to time) or any country to which the U.S. has embargoed goods; or (ii) to anyone on the U.S. Treasury Department's list of Specially Designated Nations or the U.S. Commerce Department's Table of Denial Orders.

3 Restricted Rights: Use, duplication or disclosure by the United States government is subject to the restrictions as set forth in the Rights in Technical Data and Computer Software Clauses in DFARS 252.227-7013(c) (1) (ii) and FAR 52.227-19(c) (2) as applicable.

Part of the software in this product is copyright © SyncML initiative Ltd. (1999-2002). All rights reserved.

Other product and company names mentioned herein may be the trademarks of their respective owners. Any rights not expressly granted herein are reserved.

# Getting to Know Your Phone



## User Guide Symbols

The following instruction symbols appear in this user guide:

- ➡ See also page ...
- ▶ Use the navigation key to scroll and select
  - ➡ *12 Navigating the Menus.*



Note



This symbol indicates that a service or function is network- or subscription-dependent. Because of this, all menus may not be available in your phone. Consult your service provider for more information.

## Assembling Your Phone

Insert the SIM card, attach and charge the battery to use your phone.

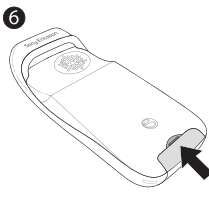
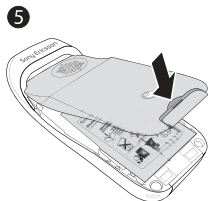
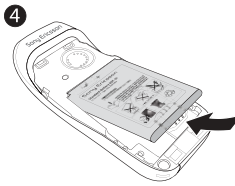
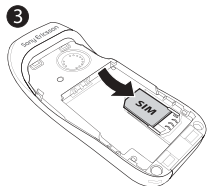
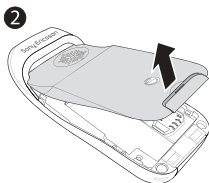
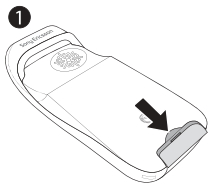
### SIM Card

When you register as a subscriber with a service provider, you get a SIM (Subscriber Identity Module) card. The SIM card contains a computer chip that keeps track of your phone number, the services included in your subscription, and your phonebook information, among other things.




*Save contacts to your SIM card before you remove it from another phone. Contacts may have been saved in the phone memory ➡ 17 Phonebook.*

## To Remove the Cover and Insert the SIM Card



- 1 Push to release the cover.
- 2 Lift the cover up.
- 3 Insert the SIM card. Make sure the SIM card is placed under the silvery holders.
- 4 Place the battery in the phone with the label side up and the connectors facing each other.
- 5 Place the cover on the phone.
- 6 Push to secure the cover.

## **PIN (Personal Identification Number)**

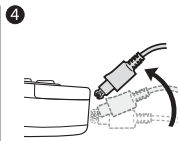
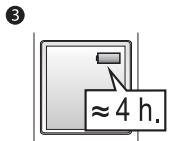
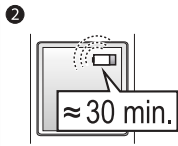
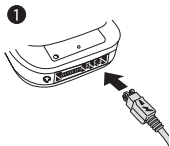
You may need a PIN (Personal Identification Number) from your service provider to activate the services in your phone. Each PIN digit appears as \*, unless it starts with emergency number digits, for example 112. This is so that you can see and call an emergency number without entering a PIN  
➡ *17 Emergency Calls*. Press  to correct mistakes.




*If you enter the wrong PIN three times in a row, the SIM card is blocked and the message PIN blocked appears. To unblock it, you need to enter your PUK (Personal Unblocking Key) ➡ 59 SIM Card Lock.*



## To Charge the Battery

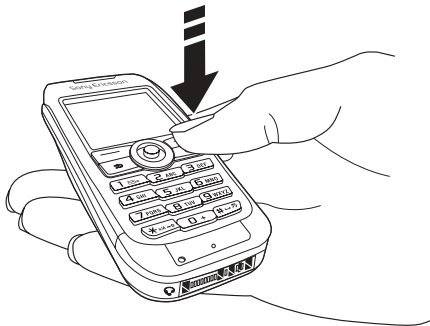


- 1 Connect the charger to the phone at the flash symbol. The flash symbol on the charger plug must face upwards.
- 2 It may take 30 minutes for the battery icon to appear.
- 3 Wait approximately 4 hours or until the battery icon indicates that the battery is fully charged. For an indication of charging, press  to activate the screen.
- 4 Remove the charger by tilting the plug upwards.



*Some functions use more battery power than others and may cause a need for more frequent re-charging. However talk-time or standby time may become noticeably shorter due to wear and you may have to replace your battery. Only use approved batteries from Sony Ericsson ➔ 71 Battery Use and Care.*

## To Turn the Phone On and Off



- 1 Press and hold **C** to turn on or off.
- 2 Enter your SIM card PIN, if you have one.
- 3 At first start-up, select the language for phone menus.
- 4 ► **Yes** if you want the setup wizard to help you with instructions and tips or ► **No**.  
The setup wizard is also available in the menu system,  
► **Settings** ► **General tab** ► **Setup Wizard**.

## To Make and Receive Calls

Enter the area code and phone number ► **Call** to make the call.  
► **End Call** to end the call. When the phone rings ► **Yes** to answer the call.

## Icons

A selection of icons in standby and on the desktop.

Icon	Description
------	-------------



Tells you the strength of the GSM network signal.


---



Tells you the status of the battery.

---



Press  to go to the desktop from standby

➔ *12 Navigating the Menus*

---



**PlayNow™** – download and play music.

---



**Internet Services** – gives you access to Internet services.

---



**Entertainment** – games, MusicDJ™, sound recorder.

---



**File Manager** – handling of pictures, sounds, video, themes, games, applications and other files.

---



**Messages** – handling of text, picture, email and voice messages.

---



**Organizer** – calendar, alarm clock and other extras.

---



**Media Player** – play music, watch streamed or downloaded video clips.

---



**Phonebook** – your personal phonebook.

---



**Settings** – connectivity, personal settings, including screen, time, date, language, sounds, alerts and calls.

---

For more information, see [www.SonyEricsson.com/support](http://www.SonyEricsson.com/support).

# Menu Overview

## PlayNow™

### File Manager

- Pictures
- Sounds
- Videos
- Themes
- Games
- Applications
- Other

### Media Player

## Internet Services\* Entertainment

- Games
- MusicDJ™
- Record Sound

### Messages

- Write New
- Inbox
- My Friends\*
- Call Voicemail
- Email
- Drafts
- Templates
- Outbox
- Sent Items
- Saved Items
- Settings

### Phonebook\*\* Contacts\*\*

- Options
- Speed Dial
- My Business Card
- Groups
- SIM Numbers
- Special Numbers
- Advanced
- New Contact

### SIM Numbers\*\*

- Options
- Speed Dial
- My Business Card
- Contacts
- Special Numbers
- Advanced
- New Number

### Organizer

- Calendar
- Tasks
- Notes
- Applications
- Alarms
- Timer
- Stopwatch
- Calculator
- Code Memo

### Settings

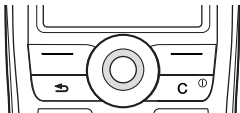
- General** tab
- Profiles...
- Sounds & Alerts** tab
- Ring Volume...
- Display** tab
- Wallpaper...
- Calls** tab
- Forward Calls...
- Connect** tab
- Synchronization...

*\*Some menus are service provider-, network- and subscription-dependent.*

*\*\*The menu depends on which phonebook is selected as default.  
...More settings appear.*

## Navigating the Menus

The main menus are shown as icons on the desktop. Some submenus include tabs that appear on the screen.



- Press the navigation key in the center or in a direction:  
Press to go to the desktop or to select items.  
Press , , or to move through menus and tabs.
- Press to go back one level in the menus or to end a function or application.  
Press and hold to return to standby.
- Press to select the options shown immediately above these keys on the screen.
- Press to delete items.

## Shortcuts

From standby, you can use , , , to go directly to a function.

### To Create a Standby Shortcut

- 1 If, for example, has no predefined shortcut. ► **Yes**.
- 2 Scroll to a function to create a shortcut to ► **Shortcut**.

### To Edit a Standby Shortcut

- 1 ► **Settings** ► **General** tab ► **Shortcuts** and select an existing shortcut you want to edit ► **Edit**.
- 2 Scroll to and select a function ► **Shortcut**.

## Help Texts

Help texts exist in your phone. To access help texts ► **Info**.

## More Options

► **More** to enter a list of options.

## File Manager

Files are saved in the folders. Create subfolders to move files to. Unrecognized files are saved in the **Other** folder.

### **To Manage Files and Folders**

- 1 ► **File Manager** and select a folder.
- 2 Scroll to a file ► **More** ► **Manage Files** ► **Move to Folder**.
- 3 Select the folder you want to move the file to, or select **New Folder** and name the folder ► **OK**.

### **To Select Several Files**

- 1 ► **File Manager** and select a file ► **More** ► **Mark Several**.
- 2 Scroll and select more files by pressing **Mark** or **Unmark**.

### **To Check Memory Status**

► **File Manager** ► **More** ► **Memory Status**.

## File Information

View information for files. Copyright-protected files cannot be copied or sent.

## Synchronizing Files

For more information ➡ *51 Synchronizing*.

## Languages

Select the language for phone menus or the languages that you may use when writing.

## **To Change the Phone Language**

- ▶ **Settings** ▶ **General** tab ▶ **Language** ▶ **Phone Language**, select a language.
- From standby, press:
  - 0000 for English or
  - 8888 for Automatic language (SIM dependant).

## **To Select Writing Languages**

- ▶ **Settings** ▶ **General** tab ▶ **Language** ▶ **Writing Language**.
- Select a language ▶ **Save** to exit the menu.

## **To Switch Between Writing Languages**

Press and hold (#) when writing.

## **Entering Letters**

There are two ways of entering letters:

- Multitap text input
- T9™ Text Input

## **To Enter Letters Using Multitap Text Input**

- Press (2) – (9) until the desired character appears.
- Press (\*a/A) to shift between capitals and lower case letters.
- Press and hold (0+) - (9) to enter numbers.
- Press (#) to add a space.
- Press (1) for the most common punctuation marks.
- Press (0+) to enter the + sign.
- Press and hold (\*a/A) to change input method.

## **T9™ Text Input**

The T9™ Text Input method uses a built-in dictionary to recognize the most commonly used word for each sequence of key presses. This way, you press each key only once, even if the letter you want is not the first letter on the key.

## **To Enter Letters Using T9 Text Input**

- 1 ▶ **Messages** ▶ **Write New** ▶ **Text Message**.
- 2 For example, if you want to write the word “Jane”, press (5), (2), (6), (3).
- 3 If the word shown is the one you want, press (#↵) to accept and add a space. To accept a word without adding a space, press (⊙). If the word shown is not the one you want, press (⊙) or (⊙) repeatedly to view alternative words. Accept a word and add a space by pressing (#↵).
- 4 Continue writing your message. To enter a period or other punctuation marks, press (1) and then (⊙) or (⊙) repeatedly. Accept by pressing (#↵).

## **To Add Words to the T9 Text Input Dictionary**

- 1 While entering letters ▶ **More** ▶ **Spell Word**.
- 2 Edit the word by using multitap input. Navigate between the letters with (⊙) and (⊙). To delete a character, press (C). To delete the entire word, press and hold (C).
- 3 When you have edited the word ▶ **Insert**. The word is added to the T9 Text Input dictionary. Next time you enter this word using T9 Text Input, it will appear as one of the alternative words.

## **To Select Another Writing Method**

Before, or while entering letters, press and hold (\*a/A) to select another writing method.

## **Options When Entering Letters**

- ▶ **More** to view options when entering letters.





## Calling


### Making and Receiving Calls

Turn on the phone and make sure you are within range of a network to make and receive calls ➡ *9 To Turn the Phone On and Off*. If your subscription includes the Caller ID service and the caller's number is identified, the number is displayed. If the number is in the phonebook, the name, number, and picture are displayed. If the number is a restricted number, **Withheld** is displayed.

#### To Make a Call

- 1 Enter the area code and the phone number.
- 2 ▶ **Call** to make the call.
- 3 ▶ **End Call** to end the call.

#### To Make International Calls

- 1 Press and hold  until a + sign appears on the screen.
- 2 Enter the country code, area code (without the leading zero) and phone number ▶ **Call**.

#### To Redial a Number

If the connection failed, **Retry?** is displayed ▶ **Yes**.




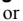
*Do not hold the phone to your ear while waiting.*

*When a call connects, the phone gives a loud signal.*


#### To Answer or Reject a Call

▶ **Yes** to answer a call. ▶ **No** to reject a call.

#### To Change the Volume During a Call

Move  or  to decrease or increase the volume.

## **To Select More Options During a Call**

Press  and select an option.

## **To Turn Off the Microphone**

- 1 Press  ► **Mute Microphone**, or press and hold .
- 2 ► **Replace?**, or press  again, to resume.

## **To Check Your Missed Calls**

- 1 From standby ► **Calls** and scroll to the missed calls tab.
- 2 To call a number from the list, scroll to a number ► **Call**.

## **Emergency Calls**

Your phone supports the international emergency numbers, 112, 911 and 08. This means that these numbers can normally be used to make an emergency call in any country, with or without a SIM card inserted, if a GSM network is in range.



*In some countries, other emergency numbers may also be promoted. Your service provider may have saved additional local emergency numbers on the SIM card.*

## **To Make an Emergency Call**

Enter, for example, 112 ► **Call**.

## **To View Your Local Emergency Numbers**

► **Phonebook** ► **Options** ► **Special Numbers** ► **Emergency nos.**

## **Phonebook**

Choose your default phonebook from one of the following:

- **Contacts** - detailed information saved in the phone.
- **SIM Numbers** - names and numbers only on the SIM card.

## **To Select Your Default Phonebook**

- 1 ▶ Phonebook ▶ Options ▶ Advanced ▶ Default Phonebook.
- 2 Select **Contacts** or **SIM Numbers**.

For information and settings in either phonebook ▶ **Options**.

## **Memory**

The number of entries you can save depends on the amount of memory available in the phone or on the SIM card.

## **To Check the Memory Status**

- ▶ Phonebook ▶ Options ▶ Advanced ▶ Memory Status.

## **Contacts**

Save up to 510 numbers, add pictures, ringtones and personal information, such as email, Web and street addresses.

Information added to a contact is organized under five tabs.

Use , ,  and  to scroll between tabs.

## **To Add a Contact**

- 1 ▶ Phonebook ▶ New Contact ▶ Add.
- 2 Enter the name ▶ **OK**.
- 3 Enter the number ▶ **OK**.
- 4 Select a number type.
- 5 Scroll between the tabs and select fields to enter more information. To enter symbols, for example, @ in an email address ▶ **Symbols** and select a symbol ▶ **Insert**.
- 6 When you have entered the information ▶ **Save**.



*Enter the + sign and country code with all phonebook numbers. They can then be used abroad or at home*

➡ *16 To Make International Calls.*

## **SIM Numbers**

Save entries as a name with a single number.

### **To Add a SIM Number**

- 1 ▶ Phonebook ▶ New Number ▶ Add.
- 2 Enter the name ▶ OK and number ▶ OK ▶ Save.

## **Copying Contacts**

Copy SIM numbers to and from contacts and the SIM card.



*When copying all contacts from the phone to the SIM card, all existing SIM card information is replaced.*

### **To Copy Names and Numbers to the SIM Card**

- 1 ▶ Phonebook ▶ Options ▶ Advanced ▶ Copy to SIM.
- 2 Select Copy All or Copy a Number.

### **To Copy SIM Numbers to Contacts**

- 1 ▶ Phonebook ▶ Options ▶ Advanced ▶ Copy from SIM.
- 2 Select Copy All or Copy a Number.

### **To Automatically Save Names and Phone Numbers to the SIM Card**

- 1 ▶ Phonebook ▶ Options ▶ Advanced ▶ Autosave on SIM.
- 2 Select On.

## **Sending Contacts**

Send contacts in a text or picture message.

### **To Send a Contact**

- ▶ Phonebook and select a contact ▶ More ▶ Send Contact.

### **To Send all Contacts**

- ▶ Phonebook ▶ Options ▶ Advanced ▶ Send All Contacts.



### **To Add a Picture or a Ringtone to a Contact**

- 1 ▶ **Phonebook** and select the contact you want to add a picture or personal ringtone to ▶ **More** ▶ **Edit Contact**.
- 2 Select a tab and then select a **Picture:** or **Ringtone:** ▶ **Edit**. This takes you to **File Manager**. Select a file ▶ **Save**.

### **Calling From the Phonebook**

If contacts is the default phonebook, you can call from contacts or from the SIM card. If SIM numbers is the default phonebook, you can only call the numbers on the SIM card.

### **To Call a Contact**

- 1 ▶ **Phonebook**. Scroll to, or enter the first letter of the contact you want to call.
- 2 When the contact is highlighted, press  or  to select a number ▶ **Call**.

### **To Call a SIM Number**

- 1 ▶ **Phonebook**. If SIM numbers is the default phonebook, select the name and number from the list ▶ **Call**.
- 2 If Contacts is default phonebook ▶ **Phonebook** ▶ **Options** ▶ **SIM Numbers** and select the number ▶ **Call**.

### **To Edit a Contact**

- 1 ▶ **Phonebook** and select a contact ▶ **More** ▶ **Edit Contact**.
- 2 Scroll to a tab and edit the information ▶ **Save**.

### **To Edit SIM Numbers**

- 1 If SIM numbers is default, ▶ **Phonebook** or if contacts is default, ▶ **Phonebook** ▶ **Options** ▶ **SIM Numbers**.
- 2 Select the name and number you want to edit.
- 3 ▶ **More** ▶ **Edit** and edit the name and number.

### **To Delete a Contact or a SIM Number**

► **Phonebook** select a contact or number, press **C** ► **Yes**.

### **To Delete all Contacts**

- 1 ► **Phonebook** ► **Options** ► **Advanced** ► **Delete All Contacts**.
- 2 ► **Yes** and enter the phone lock code ► **OK**. The default phone lock code is 0000. Names and numbers that are saved on the SIM card are not deleted.

### **Default Number for Contacts**

Set the phone number to be displayed first for each contact.

### **To Set the Default Item for a Contact**

► **Phonebook** and scroll to a contact ► **More** ► **Default Number**.

### **Synchronizing Contacts**

For more information, ► *51 Synchronizing*.

### **Call List**

Information about the last 30 calls is saved in the call list.

### **To Call a Number from the Call List**

- 1 ► **Calls** from standby and select a tab.
- 2 Scroll to the name or number you want to call ► **Call**.

### **To Clear the Call List**

► **Calls** and scroll to the tab with all calls ► **More** ► **Delete all**.

### **Speed Dialing**

Save phone numbers for speed dialing in a list of numbers from 1-9 in your phone and on your SIM card.

## **To Set or Replace Speed Dialing Numbers**

- 1 ▶ Phonebook ▶ Options ▶ Speed Dial.
- 2 Scroll to a number in the list ▶ Add or Replace. Select a phone number.

## **To Speed Dial**

From standby, enter a speed dial number (from 1-9) ▶ Call.

## **Voicemail**

If your subscription includes an answering service, callers can leave a voice message when you cannot answer a call.

## **To Enter your Voicemail Number**

If you haven't set your voicemail number, press and hold **1**.  
▶ Yes enter the number.

## **To Call your Voicemail Service**

If you have saved your voicemail number, press and hold **1**. You get the number from your service provider.

## **To Check your Voicemail Number**

▶ Messages ▶ Settings ▶ Voicemail Number.

## **Voice Control**


Manage calls with your voice and a handsfree. Create voice commands to voice dial, answer or reject calls. Recording time for a voice command is up to 2 seconds with a limit of up to 50 voice commands. Voice commands cannot be saved on the SIM card.

## **To Set Up Voice Dialing and Record Names**

- 1 ▶ Settings ▶ General tab ▶ Voice Control ▶ Voice Dialing ▶ Activate ▶ Yes ▶ New Voice Cmd. Select a contact.
- 2 Select the phone number to add the voice command to. Record a voice command such as "John mobile".

- 3 Instructions appear. Lift the phone to your ear, wait for the tone and say the command that you want to record. The voice command is played back to you.
- 4 If the recording is ok ► **Yes**. If not ► **No**. Repeat step 3.
- 5 To record another voice command for a contact ► **New Voice Cmd.** again and repeat steps 2-4 above.



*Turn the Media player off before using voice dialing. Scroll to the Media player and press  to turn off.*

### **To Set Up Voice Answering and Record Voice Answer Commands**

- 1 ► **Settings** ► **General tab** ► **Voice Control** ► **Voice Answer** ► **Activate**.
  - 2 Instructions appear. ► **Continue** and lift the phone to your ear. Wait for the tone and say “Answer”, or another word. If the recording sounds ok ► **Yes**. If not ► **No** and repeat step 2.
  - 3 Say “Busy”, or another word ► **Yes**.
- Follow the instructions that appear, save when finished.



*You cannot use voice answering if you have selected an MP3 file as ringtone.*

### **The Magic Word**

Record and use a voice command as a magic word to activate voice control without pressing any keys. The magic word can only be used with a handsfree.

### **To Set Up and Record the Magic Word**

- 1 ► **Settings** ► **General tab** ► **Voice Control** ► **Magic Word** ► **Activate**.
- 2 Follow the instructions that appear, save when finished.



## **To Activate Voice Control and Make a Call**

- 1 From standby, press and hold **Calls** or with a handsfree, say your magic word or press the handsfree button.
- 2 Wait for the tone and say the name you recorded earlier, for example “John mobile”, the call connects.

## **To Answer or Reject a Call**

When the phone rings, say “Answer” or say “Busy”.

## **Play Caller Name**

Hear your recorded voice commands for contacts names when receiving a call.

## **To Turn the Caller Name On or Off**

► **Settings** ► **General** tab ► **Voice Control** ► **Play Caller Name**.

## **Editing your Voice Commands**

► **Phonebook** select the contact you want to edit ► **More** ► **Edit Contact**. Scroll to the relevant tab and edit your voice command.

## **To Rerecord a Voice Command**

- 1 ► **Settings** ► **General** tab ► **Voice Control** ► **Voice Dialing** ► **Edit Names**.
- 2 Select a voice command ► **More** ► **Replace Voice**.
- 3 Wait until you hear the tone, then say the command.

## **Forwarding Calls**

If you cannot answer incoming calls, you can forward them to another number, for example, your answering service.



*When the Restrict calls function is activated, some Forward calls options are not available.*

### ***To Activate a Call Forward***

- 1 ▶ **Settings** ▶ **Calls** tab ▶ **Forward Calls**.
- 2 Select a call type and then one of the forward options ▶ **Activate**.
- 3 Enter the phone number to which you want your calls to be forwarded, or ▶ **Lookup** to find the contact ▶ **OK**.

### ***To Deactivate a Call Forward***

Scroll to the forward option ▶ **Deactivate**.

### ***To Check all Forward Options***

▶ **Settings** ▶ **Calls** tab ▶ **Forward Calls** ▶ **Check All**.

### **More Than One Call**

Handle more than one call simultaneously.

### **Call Waiting Service**

When activated, you hear a beep if you receive a second call.

### ***To Activate or Deactivate the Call Waiting Service***

▶ **Settings** ▶ **Calls** tab ▶ **Manage Calls** ▶ **Call Waiting**.

### ***To Make a Second Call***

- 1 ▶ **Hold** to put the ongoing call on hold.
- 2 Enter the number you want to call ▶ **Call**.



### **Receiving a Second Call**

When you receive a second call, you can:

- ▶ **Answer** and put the ongoing call on hold.
- ▶ **Busy** to reject and continue the ongoing call.
- ▶ **Replace Active Call** to answer and to end the ongoing call.

## Handling Two Calls

If you have an ongoing call and a call on hold, you can:

- ▶ **Switch** between the two calls.
- Press  ▶ **Join Calls** to join the two calls.
- Press  ▶ **Transfer Call**, to connect the two calls. You are disconnected from both calls.



*Contact your service provider to verify whether this function is supported.*

- ▶ **End Call**, press **Yes** to retrieve the held call.
- ▶ **End Call** ▶ **No** to end both calls.
- You cannot answer a third call without ending one of the first two calls or joining them into a conference call.



## Conference Calls

A conference call is started by joining an ongoing call and a call on hold. You then put the conference on hold to call and add up to five participants or just to make another call.


### **To Join the Two Calls into a Conference Call**

Press  ▶ **Join Calls**.

### **To Add a New Participant**

- ▶ **Hold** to put the joined calls on hold.
- Press  ▶ **Add Call** and call the next person.
- Press  ▶ **Join Calls**.
- Repeat steps 1-3 to include more participants.

### **To Release a Participant**

Press  ▶ **Release Part** and select the participant.

### **To Have a Private Conversation**

- 1 Press **⊙** ▶ **Talk To** and select the participant.
- 2 Press **⊙** ▶ **Join Calls** to resume the conference call.

### **Two Voice Lines**

Separate business and private calls on two lines with different numbers if your subscription supports alternate line service.

### **To Select a Line**

- ▶ **Settings** ▶ **Calls** tab and select line 1 or 2.

### **To Change the Name of a Line**

- ▶ **Settings** ▶ **Display** tab ▶ **Edit Line Names** and select one of the lines to edit the name.

### **My Numbers**

View, add and edit your own phone numbers.

### **To Check Your Phone Numbers**

- ▶ **Phonebook** ▶ **Options** ▶ **Special Numbers** ▶ **My Numbers** and select one of the options.

### **Accept Calls**

Receive calls from certain phone numbers only.

### **To Add Numbers to the Accepted Callers List**

- 1 ▶ **Settings** ▶ **Calls** tab ▶ **Manage Calls** ▶ **Accept Calls**  
▶ **Only From List**.
- 2 ▶ **Edit** ▶ **New** ▶ **Add**. Select numbers you want to edit.

### **To Accept all Calls**

- ▶ **Settings** ▶ **Calls** tab ▶ **Manage Calls** ▶ **Accept Calls**  
▶ **From All**.

## Restricted Dialing

Restrict outgoing and incoming calls when at home or abroad. You need a password from your service provider.



*If you forward incoming calls, you cannot activate some Restrict calls options.*

The following calls can be restricted:

- **All Outgoing** – all outgoing calls.
- **Outgoing Intl.** – all outgoing international calls.
- **Outgoing Intl Roam** – all outgoing international calls except to your home country.
- **All Incoming** – all incoming calls.
- **Inc. When Roaming** – all incoming calls when you are abroad (when roaming).

### **To Activate or Deactivate a Call Restriction**

- 1 ▶ **Settings ▶ Calls tab ▶ Manage Calls ▶ Restrict Calls** and select an option.
- 2 Select **Activate** or **Deactivate**, enter your password ▶ **OK**.

## Fixed Dialing

The fixed dialing function allows calls to be made only to certain numbers saved on the SIM card. The fixed numbers are protected by your PIN2.



*You can still call the international emergency number 112, even when the fixed dialing function is activated.*

Partial numbers can be saved. For example, saving 0123456 allows calls to be made to all numbers starting with 0123456.



*When fixed dialing is activated, you cannot view or manage any phone numbers saved on the SIM card.*

### **To Activate or Deactivate Fixed Dialing**

- 1 ▶ Phonebook ▶ Options ▶ Special Numbers ▶ Fixed Dialing.
- 2 Select **Activate** or **Deactivate**.
- 3 Enter your PIN2 ▶ **OK** and then ▶ **OK** again to confirm.

### **To Save a Fixed Number**

- 1 ▶ Phonebook ▶ Options ▶ Special Numbers ▶ Fixed Dialing ▶ Fixed Numbers ▶ New Number.
- 2 Enter your PIN2 ▶ **OK** and enter the information.

### **Call Time and Cost**

During a call, the duration of the call is shown. If you subscribe to cost information, you can check the duration of your last call, outgoing calls and the total time. You can also check the cost of your last call and the total cost of your calls.



*If you subscribe to cost information, you must enter your PIN2 to reset the cost or time counter.*

### **To Check the Call Time**

- ▶ Settings ▶ Calls tab ▶ Time & Cost ▶ Call Timers.

### **To Reset the Call Time Meter**

- ▶ Settings ▶ Calls tab ▶ Time & Cost ▶ Call Timers ▶ More and select **Reset total** or **Reset Outgoing**.

### **To Check the Call Cost**

- ▶ Settings ▶ Calls tab ▶ Time & Cost ▶ Call Costs.

### **To Reset the Call Cost Meter**

- ▶ Settings ▶ Calls tab ▶ Time & Cost ▶ Call Costs ▶ More ▶ **Clear Total Cost**.

## **Credit Limit for Calls**

Enter an estimated total amount of money for making calls. No more calls can be made when the total reduces to zero.

### **To Set a Credit Limit**

- 1 ▶ **Settings** ▶ **Calls** tab ▶ **Time & Cost** ▶ **Call Costs** ▶ **More**  
▶ **Set Credit** and enter your PIN2 ▶ **OK**.
- 2 Select **Limited** and enter an amount or **Unlimited** ▶ **OK**.

## **Call Priority Service**

Request a certain priority when you make a call, if your subscription supports the call priority service. The priority levels are defined by your service provider and are normally within the range of 0-4, where 0 is the highest priority.

### **To Check or Change Your Standard Priority Level**

- 1 ▶ **Settings** ▶ **Calls** tab ▶ **Manage Calls** ▶ **Default Priority**.
- 2 Select from available priority levels sent by the network.

### **To Change the Priority for One Call**

Enter a number ▶ **More** ▶ **Call Priority** and select a priority.

## **Closed User Groups**

If your network supports closed user groups, you may be able to call at lower costs. You can save up to ten groups. An index number is required from your service provider.

### **To Add a Group**

- 1 ▶ **Settings** ▶ **Calls** tab ▶ **Manage Calls** ▶ **Closed Groups**  
▶ **Edit List** ▶ **New Group** ▶ **Add**.
- 2 Enter the name of the user group ▶ **Continue**.
- 3 Enter the index number ▶ **Save**.

## **To Call Outside a Closed User Group**

- ▶ Settings ▶ Calls tab ▶ Manage Calls ▶ Closed Groups
- ▶ Open Calls ▶ On. To only call within the group ▶ Off.

## **Tone Signals**

Use telephone banking services or control an answering machine by sending tone signals during a call.

- To send the tones, press **(0+)** - **(9)**, **(\*/a/A)** or **(#)**.
- To clear the screen after the call is finished, press **(C)**.
- To turn the tones on or off during a call, press **(M)** in standby and select **Turn On Tones** or **Turn Off Tones**.

## **Notepad**

Note down a phone number during a call. When you end the call, the number remains on the screen to call or save in the phonebook.

## **Showing or Hiding Your Phone Number**

If your subscription supports the Calling Line Identification Restriction, you can hide your number when making a call.

### **To Show or Hide Your Phone Number**

- 1 Enter the phone number you want to call.
- 2 ▶ **More** and select **Hide Number** or **Show Number**.

### **To Always Show or Hide Your Phone Number**

- 1 ▶ **Settings** ▶ **Calls** tab ▶ **Show or Hide No.**
- 2 Select **Show Number**, **Hide Number** or **Network Default**.

## **Groups**

Create a group of numbers and send messages to several recipients at the same time ➡ *33 Messaging*.



### ***To Create a Group of Numbers***

- 1 ▶ Phonebook ▶ Options ▶ Groups ▶ Send DTMF Tones ▶ Add.
- 2 Enter a name for the group ▶ Continue.
- 3 ▶ New Number ▶ Add to find and select a contact number.
- 4 Repeat step 3 to add more numbers. ▶ Done to save.

### **Business Cards**

Add your own business card to the phonebook.

#### ***To Add Your Own Business Card***

▶ Phonebook ▶ Options ▶ My Business Card and enter the information for your business card ▶ Save.

#### ***To Send Your Business Card***

▶ Phonebook ▶ Options ▶ My Business Card ▶ Send My Card.



## Messaging

Your phone supports various messaging services. Contact your service provider about the services you can use or for more information, see *www.SonyEricsson.com/support*.

### Text Messages

Text messages can contain pictures, animations, melodies and sound effects. Text messages can be sent to one person, several recipients or to a group saved in the phonebook.


### Before You Start

A service center number is provided by your service provider to send and receive text messages. It may already be saved on the SIM card or you can add the number yourself.

### To Check or Add a Service Center Number

- 1 ► **Messages** ► **Settings** ► **Text Message** ► **Service Center**.  
The number is shown if it is saved on the SIM card.
- 2 If there is no number ► **Add** and enter it, including the international “+” sign and country code ► **Save**.

### To Write and Send a Text Message or Save a Draft

- 1 ► **Messages** ► **Write New** ► **Text Message**.
- 2 Write your message ► **Continue** or  ► **Yes** to save in **Drafts**.
- 3 ► **Enter Phone No.** and enter the recipient's number, or ► **Phonebook LookUp** to retrieve a number or a group, or select from the last 10 recipients list ► **Send**.



*If you send a text message to a group, you are charged for each member of that group.*

## **To Insert an Item in a Text Message**

- 1 While writing your message ► **More** ► **Add Item**.
- 2 Select an item type and then an item.

## **Formatting Text**

Change style, size, alignment and create new paragraphs.

## **To Format the Text in a Text Message**

- 1 While writing your message ► **More** ► **Text Format**. Then select **Text Size**, **Text Style**, **Alignment** or **New Paragraph**.
- 2 Select a text format.



*Text formatting only applies when Latin characters are applied.*

## **To Call a Number Contained in a Text Message**

Select the phone number ► **Call**.

## **To Save a Message**

- 1 ► **Messages** ► **Inbox** ► **More** ► **Save Message**.
- 2 ► **Saved Items** (SIM card) or ► **Templates** (phone).

## **To Save an Item From a Text Message**

- 1 Select the item ► **More**.
- 2 Save an item as follows: a phone number ► **Use** ► **Save Number**, a Web address ► **Save Bookmark**, a picture ► **Save Picture** or a melody ► **Save Sound**.

## **To Delete, Save or Select Several Messages**

- 1 ► **Messages** and select a folder.
- 2 Select a message ► **More** ► **Mark Several**.
- 3 ► **Mark** or **Unmark** to select more messages
- 4 ► **More** and select an option.

## **To Delete a Message or all Messages**

► Messages ► Inbox ► More ► Delete or Delete All Msgs.

## **Long Messages**

The number of characters allowed in a text message depends on the language you are writing in. You can send a longer message by linking two or more messages. You are charged for each of the messages linked in a long message. You may not receive all parts of a long message at the same time.



*Check with your service provider for the maximum number of messages that can be linked.*

## **To Turn Long Messages On**

► Messages ► Settings ► Text Message ► Max. Msg Length  
► Max. Available.

## **Templates**

Messages that you send often can be saved as templates

► 34 *To Save a Message*. You can also create new templates.

## **To Create a Template**

1 ► Messages ► Templates ► New Template ► Text.

2 Write the message ► OK. Enter a title ► OK.

## **Message Options**

Set a default value for several message options or choose the settings each time you send a message.

## **To Set a Default Text Message Option**

► Messages ► Settings ► Text Message and select an option.

### **To Set a Message Option for a Specific Message**

- 1 When you have selected a recipient ► **More** ► **Advanced**.
- 2 Select an option ► **Edit** and select a setting ► **Done**.

### **To Check the Delivery Status of a Sent Message**

- **Messages** ► **Sent Items** and select a text message ► **View**  
► **More** ► **Details**.

## **Picture Messages**

Picture messages can contain text, pictures, video clips sound recordings and business cards and are sent via MMS (Multimedia Messaging Service) to a mobile phone or via email. The sender and receiver of a picture message must have a subscription that supports MMS.

### **Before You Start**

If settings are not already in your phone ➡ *48 Settings*.

### **Writing and Sending Picture Messages**

Select from the following items to format your message:  
**Picture, Text, Sound, Video and Record Sound.**

### **To Write and Send a Picture Message**

- 1 ► **Messages** ► **Write New** ► **Picture Msg..** ► **Add** to view a list of items to add to your message. Select an item.
- 2 ► **Add** to add more items to the message.
- 3 When you have finished ► **More** ► **Send**.

### **To Make a Call While Writing a Picture Message**

- 1 While writing your message ► **More**.
- 2 ► **Make a Call** and enter or retrieve a number ► **Call**.
- 3 To end the call ► **More** ► **End Call**.

## **To Set a Default Message Option**

► **Messages** ► **Settings** ► **Picture Msg.** and select an option.

## **Additional Send Options**

Request a read report, a delivery report and set a priority for a specific message. You can also add more recipients to the message.

## **To Select Additional Send Options**

- 1 When you have entered the recipient's phone number  
► **More**.
- 2 Select **Add Recipient** or **Recipients** to add more recipients, **Advanced** to select an additional send option or **Add Attachment**.

## **Save Items from a Picture Message**

When you have viewed a picture message ► **More** ► **Save Items** and select an item from the list that appears.

## **To Delete a Message**

- 1 ► **Messages** and select a folder.
- 2 Select the message, press **(C)**.

## **To Save or Delete Several Messages**

- 1 ► **Messages** and select a folder.
- 2 Select a message ► **More** ► **Mark Several**.
- 3 Select more messages by pressing **Mark** or **Unmark**.
- 4 ► **More** ► **Save messages** or ► **More** ► **Delete Messages**.

## **To Delete all Messages**

► **Messages** and select a folder ► **More** ► **Delete All Msgs.**

## Templates

Base your message on one of the predefined templates. You can also add new templates.

### **To Use a Predefined Template for a Picture Message**

- 1 ▶ **Messages** ▶ **Templates** and select a template.
- 2 ▶ **Use** ▶ **Add** to make changes or add new items.
- 3 ▶ **More** ▶ **Send** to send the message.

## Automatic Download

Select how to download your picture messages.

▶ **Messages** ▶ **Settings** ▶ **Picture Msg.** ▶ **Auto Download** to view the following:

- **Always** – automatically download messages.
- **Ask in Roaming** – ask to download other network messages.
- **Never in Roam** – do not download other network messages.
- **Always Ask** – ask to download messages.
- **Off** – new messages appear in the inbox as icons. Select the message ▶ **View** ▶ **Yes** to download.

## Email

Send and receive email messages with your phone. The sender and receiver must have a subscription supporting data.

### **Before You Start**

If settings are not already in your phone ➡ *48 Settings*.

### **To Write and Send an Email Message**

- 1 ▶ **Messages** ▶ **Email** ▶ **Write New**.
- 2 Write the subject ▶ **OK** write the text ▶ **OK**.
- 3 ▶ **Enter Email Addr.** to enter an email address or  
▶ **Phonebook LookUp** to retrieve a phonebook address.
- 4 ▶ **Send** or ▶ **More** to view options.

## **To Receive and Read Email Messages**

- 1 ▶ **Messages** ▶ **Email** ▶ **Inbox** ▶ **Send&Rec** (when inbox is empty) or ▶ **Messages** ▶ **Email** ▶ **Inbox** ▶ **More** ▶ **Send & Receive** to download new messages.
- 2 Select a message to read it.

## **To Reply to an Email Message**

- 1 Open the email message ▶ **Reply**.
- 2 Write your message. ▶ **More** to view options.
- 3 ▶ **Send** to send the message.

## **To Save an Email Address or a Phone Number in an Email Message**

- 1 Select the email address or phone number ▶ **More**.
- 2 ▶ **Save Email** or ▶ **Use** ▶ **Save Number**.

## **To Save an Email Message**

- 1 Open the message ▶ **More** ▶ **Save Message** ▶ **Saved Items**.
- 2 The message is saved in **Saved Items** in the **Email** menu.

## **To Save Several Email Messages**

- 1 ▶ **Messages** ▶ **Email** and select a subfolder.
- 2 Select a message ▶ **More** ▶ **Mark Several**.
- 3 Select more messages by pressing **Mark** or **Unmark**.
- 4 ▶ **More** ▶ **Save messages**.



*The number of email messages that can be saved depends on memory left in the phone. All email messages are also saved on your email server, and you can view both older and newer messages on the server.*



## **To Delete an Email Message**

- 1 ▶ **Messages** ▶ **Email** ▶ **Inbox** and select the message  
▶ **More**.
- 2 ▶ **Mark for Deletion** or ▶ **Mark Several** to delete several messages. Select more messages by pressing **Mark** or **Unmark**. ▶ **More** ▶ **Mark for Deletion**.  
Messages are deleted the next time you connect to your email server.
- 3 *For IMAP4 users only.* ▶ **More** ▶ **Clear Inbox**. and press **With Send & Rec.** or **No Send & Rec.** to delete messages.

## **My Friends**

For more information, contact your service provider or see [www.SonyEricsson.com/support](http://www.SonyEricsson.com/support).

## **Area Information**

Area information is a type of text message (for example, a local traffic report) that is sent to all subscribers within a certain network area.



*Please consult your service provider for more information about area information.*

## **To Turn Area Information On or Off**

▶ **Messages** ▶ **Settings** ▶ **Area Info** ▶ **Reception**.

## **Cell Information**

Some service providers send messages about a certain network area to their subscribers within that area.

## **To Turn On the Cell Information Channel**

▶ **Messages** ▶ **Settings** ▶ **Area Info** ▶ **Cell Information**.

# Imaging

## Pictures

Your phone comes with a number of pictures. All pictures are saved in **File Manager** ► **Pictures**. You can use a picture as a screen saver, wallpaper, or item in your phonebook  
➡ *20 To Add a Picture or a Ringtone to a Contact*. You can send pictures using picture messages or email.





## Handling Pictures






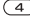


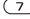

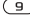



Add, edit or delete pictures in **File Manager**. The number of pictures that you can save depends on the size of the pictures. There is support for GIF, JPEG, WBMP, PNG and BMP.

### To View Your Pictures

► **File Manager** ► **Pictures** ► **View**.

## Editing Pictures

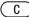
Press , , ,  to edit pictures or use the following:

- |   |  |  |
|---|--|--|
|  <i>exit the picture editor</i> |  <i>undo</i>          |  |
|  <i>left up</i>                 |  <i>up</i>            |  <i>right up</i>      |
|  <i>left</i>                    |  <i>activate tool</i> |  <i>right</i>         |
|  <i>left down</i>               |  <i>down</i>          |  <i>right down</i>    |
|  <i>select tool</i>            |                      |  <i>select color</i> |

### To Edit and Save a Picture

► **File Manager** ► **Pictures** and scroll to the picture you want  
► **More** ► **Use** ► **Edit** ► **More** ► **Save Picture**.

### **To Delete a Picture**

► **File Manager** ► **Pictures**. Select a picture ► **More** ► **Delete** or press .

### **Exchanging Pictures**

Exchange pictures using cable, picture messages or email. You are not allowed to exchange copyright-protected material. For more information on sending pictures in messages  
➡ *33 Messaging*.

### **To Send a Picture**

► **File Manager** ► **Pictures**, select a picture ► **More** ► **Send**.

### **To Receive and Save a Picture**

- 1 Open the message you received with a picture.
- 2 For a picture in a message ► **More** ► **Save Items** ► **Save**.

### **Screen Saver and Wallpaper**

The screen saver activates when in idle mode for a few seconds. After a few more seconds sleep mode activates, to save power. If you have a picture as wallpaper, this picture is shown in standby mode.

### **To Use a Picture as Screen Saver**

- 1 ► **Settings** ► **Display** tab ► **Screen Saver** ► **Picture**.
- 2 Select the picture you want to use as screen saver.

### **To Set a Picture as Wallpaper**

► **Settings** ► **Display** tab ► **Wallpaper** ► **Picture** and select the picture you want to use as wallpaper.

# Entertainment

## Media Player

The media player can play both music and video. You can play music and video clips that you download or receive in a picture message. You can also stream music and videos from Web sites. There is support for MP3, WAV (up to 16 kHz as maximum sample rate) and 3GP.







## Music and Video Clips

Play music and video clips saved in your phone. The music list keeps on playing until you press **Pause**.

### *To Play Music or View a Video Clip*

- ▶ **Media Player** and select a file ▶ **Play** or
- ▶ **More** ▶ **Play Video** and select a video clip.

## Media Player Control

- ▶ **Pause** to pause the playback.
- Press  or  to move up or down in the music list.
- Press  or  to adjust the volume.
- Press and hold  or  to rewind or fast forward.

## Media Player Options

- ▶ **More** to view the following options:
  - **Play Video** – play videos. While playing a video ▶ **More** for options to play video or music, check information, delete or send.
  - **Information** – view information for current track or video.
  - **Delete Song/Delete Video** – delete the file from the phone.
  - **Equalizer** – set treble and bass when playing music.
  - **Minimize** – return to standby and use other applications.
  - **Send Song/Send Video** – send a sound or video file.
  - **Random** – randomize the playback order of songs.

## **PlayNow™**

► **PlayNow™** to pre-listen, buy and download music via the Internet. If settings are not already in your phone ► **48 Settings**. For more information, contact your service provider or see [www.SonyEricsson.com/support](http://www.SonyEricsson.com/support).

## **Streaming Online Music and Videos**

Play videos and listen to music on a Web site by streaming them to your phone. Select a link for streaming and the media player opens automatically. These links can be saved as bookmarks. If settings are not already in your phone ► **48 Settings**.

### **To Stream Saved Music and Videos**

- 1 ► **Internet Services** ► **More** ► **Bookmarks**.
- 2 Select a link to stream, Media player opens and plays.

## **Ringtones, Melodies, Sounds and Alerts**

Use standard and polyphonic melodies as ringtones. You can exchange melodies via a cable. A sound file that cannot be set as a ringtone is not supported or prohibited. Exchange of copyright-protected material is prohibited.



*Select a file type other than MP3 as a ringtone to use voice answering. For more information, see [www.SonyEricsson.com/support](http://www.SonyEricsson.com/support).*



### **To Select a Ringtone**

► **Settings** ► **Sounds & Alerts** tab ► **Ringtone**.

### **To Turn the Ringtone On or Off**

Press and hold (#) from standby. All signals except the alarm signal are turned on or off.

## **To Set the Ringtone Volume**

► **Settings** ► **Sounds & Alerts** tab ► **Ring Volume** and press  or  to decrease or increase ► **Save**.

## **To Set the Vibrating Alert**

- 1 ► **Settings** ► **Sounds & Alerts** tab ► **Vibrating Alert**.
- 2 Set this alert to **On**, **On if in Silent** or **Off**.




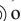

## **To Set Sounds and Alerts Options**

- **Settings** ► **Sounds & Alerts** tab, you can set:
- **Message Alert** – select message notification.
  - **Key Sound** – select the key press sound.

## **Composing Ringtone Melodies**

Compose and edit melodies to use as ringtones using the MusicDJ™. A melody consists of four tracks – **Drums**, **Basses**, **Chords** and **Accents**. A track contains a number of music blocks. The blocks consist of pre-arranged sounds with different characteristics. The blocks are grouped into **Intro**, **Verse**, **Chorus**, and **Break**. You compose a melody by adding music blocks to the tracks.

## **To Compose a Melody**

- 1 ► **Entertainment** ► **MusicDJ™**.
- 2 Choose to **Insert**, **Copy** and **Paste** blocks to compose. Use , ,  or  to move between the blocks. Press  to delete a block. ► **More** to view more options.

## **To Edit a Previously Created Melody**

- **File Manager** ► **Sounds** and select a melody ► **More** ► **Use**  
► **Edit**.

## **To Send and Receive a Melody**

- 1 ▶ **File Manager** ▶ **Sounds** and select a melody.
- 2 ▶ **More** ▶ **Send** and select a transfer method.

When you receive the melody, follow the instructions that appear.



*You cannot send a polyphonic melody or an MP3 file in a text message.*

## **Sound Recorder**

Record your own memos or calls which can be set as ringtones. Recording of all sound stops automatically if you receive a call. Recordings are saved in the phone.



*In some countries or states it is required by law that you inform the other person before recording the call.*

## **Recording Options**



▶ **Entertainment** ▶ **Record Sound** ▶ **Save** ▶ **More** to view the following options:

**Record New**, **Send**, **Rename**, **Delete**, **Recorded Sounds**.

## **To Start a Sound Recording**

▶ **Entertainment** ▶ **Record Sound**.

## **To Listen to Your Recordings**

- 1 ▶ **File Manager** ▶ **Sounds** and select a recording.
- 2 ▶ **Play** to listen to the recording. Press  and  to go to the previous or next recording. ▶ **Stop** to stop playback.

## **Themes, Games and Applications**

Your phone comes with predefined themes, games and applications. You can download new content to your phone. For more information, see [www.SonyEricsson.com/support](http://www.SonyEricsson.com/support).

### **To Select or Change a Theme**

► **File Manager** ► **Themes** and select a theme.

### **To Send a Theme**

► **File Manager** ► **Themes** and select a theme ► **More** ► **Send**.

### **To Receive and Save a Theme**

When you receive the theme, follow instructions that appear.

### **To Download a Theme**

► **File Manager** ► **Themes** and scroll to a direct link ► **Go To**.

If settings are not already in your phone ➡ *48 Settings*.

### **To Start and End a Game**

1 ► **Entertainment** ► **Games** and select a game ► **Start**.

2 Press and hold  to end the game.


### **To Download a Game**

► **Entertainment** ► **Games** and scroll to a direct link ► **Go To**.

If settings are not already in your phone ➡ *48 Settings*.

### **To Start and End an Application**

► **File Manager** ► **Applications** and select an application ► **Start**.

Press and hold  to end.

### **To Download an Application**

► **Internet Services** ► **More** ► **Bookmarks** ► to a direct link

► **Go To**.

If settings are not already in your phone ➡ *48 Settings*.





# Connectivity

## Settings



*Before you start using Internet, Messages, My Friends or PlayNow™ settings are required in your phone.*

Settings may already be entered when you buy your phone. If not, contact your network operator, service provider or see, [www.SonyEricsson.com/support](http://www.SonyEricsson.com/support) for more information.

In order to use the Internet, and send and receive picture and email messages, you need the following:

- A phone subscription that supports data transmission.
- Settings entered in your phone.
- You may also have to register as an Internet and email user with your service provider or network operator.

## Entering Settings

If the settings are not already entered in your phone, you can:

- Receive settings in a message from your network operator, service provider or see, [www.SonyEricsson.com/support](http://www.SonyEricsson.com/support).
- Enter or edit settings yourself.

## Using Internet

Browse modified Internet services via WAP (Wireless Application Protocol) or HTTP (Hyper Text Transfer Protocol).

### **To Select an Internet Profile**

► Settings ► Connect ► Internet Settings ► Internet Profiles.

### **To Start Browsing**

Scroll to your online service or service provider menu.

## **To Stop Browsing**

► More ► Exit Browser.

## **Options When Browsing**

- More and select from the following:
- **Exit Browser** – disconnect and go to standby.
  - Go to the homepage set for the current Internet profile.
  - **Bookmarks** – add the site to your list of bookmarks.
  - **Enter Address** – enter the Web page address of a site.
  - **History** – list of previously visited sites.
  - **Refresh Page** – refresh the contents of the Web page.
  - **Save Picture** – save a picture from the site.
  - **Send Link** – send a link to the current site to another phone.
  - **Status** – display current information.
  - **Make a Call/End Call** – make a call while browsing.

## **To Work With Bookmarks**

► Internet Services ► More ► Bookmarks and select a bookmark ► More. Select an option.

## **To Download From wap.sonyericsson.com**

- 1 ► Internet Services ► More ► Sony Ericsson.
- 2 Select what you want to download and follow the instructions that appear.

## **Stored Information**

When browsing, you can save information in your phone.



*It is advisable to clear any sensitive information about previously visited Internet services. This is to avoid a security risk if your phone is misplaced, lost or stolen.*

The following information can be saved:

- Cookies – improve site access efficiency.
- Passwords – improve server access efficiency.

### **To Allow or Clear Cookies in Your Phone**

► Settings ► Connect ► Internet Settings ► Cookies and select an option and confirm.

### **To Clear the Password List**

► Settings ► Connect ► Internet Settings ► Clear Passwords and ► Yes to confirm.

### **Using Applications for Java™**

You can run applications for Java™ on your phone. Most applications need an HTTP Internet profile. Please contact your operator or service provider for the correct settings.

### **To Select a Profile for Java™**

► Settings ► Connect ► Java (TM) settings ► Internet Profiles. Select the HTTP profile you want to use.

### **Internet Security**

Your phone supports WAP and HTTP secure browsing. HTTP profiles are secure if the URL starts with https://.



*Security for a connection between a WAP gateway and a WAP service provider is the responsibility of the WAP service provider.*

### **To Turn On a Secure Connection (for WAP)**

► Settings ► Connect ► Internet Settings ► Internet Profiles and select a profile ► More ► Settings. Turn on security.

## **Trusted Certificates**

These verify the WAP gateway or the HTTP server. They are contained in your phone and can also be downloaded.

### ***To check the certificates in your phone***

- ▶ Settings ▶ Connect ▶ Internet Settings ▶ Security
- ▶ Trusted Cert.

## **Synchronizing**

You can use a cable to synchronize your mobile phone files, contacts, appointments, tasks and notes with similar programs in, for example, a PC.

For more information, see *www.SonyEricsson.com/support*.

### ***To Select Sync Order for Names***

- ▶ Phonebook ▶ Options ▶ Advanced ▶ Sync. Order. Select the order in which first and last name appear in the phone when you synchronize contacts.

## **Synchronization With Nearby Devices**


Download and install the synchronization program from *www.SonyEricsson.com/support*.

For more information, please refer to help in the synchronization software.

## **Remote Synchronization With Internet Programs**

Contact your service provider for more information about available programs on the Internet with which you can synchronize, and to receive username, password and addresses for the different programs. If Internet settings do not already exist in your phone ➡ *48 Settings*.

## **To Enter the Remote Synchronization Settings**

- 1 ▶ **Settings** ▶ **Connect** ▶ **Synchronization**.
- 2 If no account exists ▶ **Yes** and enter a name for the new account ▶ **Continue**. A list of options to enter will appear. Add the server address of the synchronization server, a server username and a server password. ▶ **OK** when you have entered each setting.
- 3 Select **Connection** and select the WAP or HTTP profile.
- 4 Select **Applications** and select the applications that you want to synchronize, for example, **Phonebook** ▶ **OK**.
- 5 Select **Application Settings** and select application. Enter the name of the database and, if required, your username and password ▶ **OK**.
- 6 Press  ▶ **Save** to save your new account.

## **To Start the Remote Synchronization**

- ▶ **Settings** ▶ **Connect** ▶ **Synchronization**, select an account
- ▶ **Start**.

# More Features

## Time and Date

- To set the time ► **Settings** ► **General** tab ► **Time & Date** ► **Time**. Enter the time ► **Save**.
- To set the time format ► **Format** and select an option.
- To set the date and date format ► **Settings** ► **General** tab ► **Time & Date** ► **Date**.

## Alarm Clock

The alarm rings even if the phone is set to silent or turned off.

### *To Set and Use an Alarm*

- ► **Organizer** ► **Alarms** ► **Alarm** and enter the time ► **Save**.
- To turn the alarm signal off when it rings, press any key.
- To cancel ► **Organizer** ► **Alarms** ► **Alarm** ► **Turn Off**.
- To set a recurrent alarm ► **Organizer** ► **Alarms** ► **Recurrent Alarm**. Enter the time ► **Continue** and select the days that you want the alarm to recur by scrolling and pressing **Mark** ► **Done**.
- To select a signal ► **Organizer** ► **Alarms** ► **Alarm Signal**.

## Calendar

Add, save, edit and set reminders for up to 300 appointments.

### *To Add a New Appointment*


- **Organizer** ► **Calendar** and select the date for the appointment ► **New Appointment** ► **Add**. Confirm each entry.

### *To Set Reminders Options*

- **Organizer** ► **Calendar** ► **More** ► **Advanced** ► **Reminders**.

## Calendar Reminder Options

► **Always** if you want the reminder to sound even though the phone is turned off. When the reminder sounds ► **Yes** to read the appointment. ► **No** to turn off the reminder.

 *A reminder option set in the calendar affects a reminder option set in tasks.*

## To View an Appointment

► **Organizer** ► **Calendar** and select a day. Scroll to the appointment ► **View**.

## Navigating in Your Calendar

Use the navigation key to move between days or weeks. In the monthly and weekly views, you can also use the keypad as follows.

- |          |                     |          |                   |
|----------|---------------------|----------|-------------------|
| <b>1</b> | <i>Back a week</i>  | <b>3</b> | <i>Next week</i>  |
| <b>4</b> | <i>Back a month</i> | <b>6</b> | <i>Next month</i> |
| <b>7</b> | <i>Back a year</i>  | <b>9</b> | <i>Next year</i>  |
| <b>C</b> | <i>Today's date</i> |          |                   |

## Calendar Settings

- **Organizer** ► **Calendar** ► **More** and select an option.
- **View Week** – select, add, edit or delete appointments.
  - **New Appointment** – add a new appointment.
  - **Change Date** – change the date of your calendar.
  - **Advanced** – for options to find, delete all, set reminders or select a start day for the week.
  - **Help** – read tips about navigating in the calendar view.

## **To Search for Appointments**

- 1 ▶ **Organizer** ▶ **Calendar** ▶ **More** ▶ **Advanced** ▶ **Find**.
- 2 Enter the text you want to search for ▶ **OK**.

## **Exchanging Appointments**

Send and receive appointments using picture messaging.

## **To Send an Appointment**

Select an item, ▶ **More** ▶ **Send**.

## **Receiving an Appointment**

When **Add appointment?** is displayed ▶ **Yes**.

## **Tasks**

Save and set a reminder for up to 80 tasks.

## **To Add a New Task**

- 1 ▶ **Organizer** ▶ **Tasks** ▶ **New Task** ▶ **Add**.
- 2 Select a category. If the category is a phone call, enter the number ▶ **Continue**.
- 3 Enter a subject ▶ **Continue**.
- 4 If you want to set a reminder for your task ▶ **Yes**.

## **To Set Reminders**

▶ **Organizer** ▶ **Tasks** and select a task ▶ **More** ▶ **Reminders**.

## **Tasks Reminder Options**

▶ **Always** if you want the reminder to sound even though the phone is turned off. ▶ **Yes** to read the task, or to call the phone number in a phone task. ▶ **No** to turn off the reminder.



*A reminder option set in tasks affects a reminder option set in the calendar.*



### **To View a Task**

► **Organizer** ► **Tasks** and select a task ► **View**.

### **To Send a Task**

In the list of tasks for a certain day, select the item you want to send ► **More** ► **Send**.

### **Receiving a Task**

When **Add task?** appears ► **Yes**.

### **Notes**

Make up to 10 notes in your phone.

### **To Add a Note**

► **Organizer** ► **Notes** ► **New Note** ► **Add**, enter the note ► **Save**.

### **To Handle the Notes**

- 1 ► **Organizer** ► **Notes** and a list of notes appears.
- 2 Select the note that you want to handle. ► **More** to edit, show a note in standby (or hide it), send or delete a note.

### **Exchanging Notes**

Send and receive notes using picture messaging. Synchronize notes with a PC ➡ *51 Synchronizing*.

### **To Send a Note**

► **Organizer** ► **Notes** and select the note that you want to send ► **More** ► **Send**.

### **To Receive a Note**

**Add note?** appears ► **Yes** to save.

## Profiles

Your phone has predefined profiles that are set to suit a certain environment. You can reset all profile settings to the way they were set when you bought your phone.

### **To Select a Profile**

► Settings ► General tab ► Profiles ► Select Profile.

### **To Change a Profile Setting**

► Settings ► General tab ► Profiles ► Edit Profile and select the setting that you want to change.

### **To Rename a Profile**

► Settings ► General tab ► Profiles ► Edit Profile ► Profile Name:.



*The normal profile name cannot be changed.*

### **To Reset all Profile Settings**

► Settings ► General tab ► Profiles ► Reset Profiles.

## Stopwatch

Your phone has a stopwatch that can save several laps.

### **To Use the Stopwatch**

- 1 ► Organizer ► Stopwatch ► Start.
- 2 ► Stop or ► New Lap. To reset the stopwatch ► Reset.

## Timer

Your phone has a built-in timer. When the signal rings, press any key to turn it off.

## **To Set the Timer**

► **Organizer** ► **Timer** and enter the hours, minutes and seconds after which you want the timer to go off.

## **Screen Light**

Automatic is a setting for the screen light to turn off a few seconds after you last press a key.

Power save is designed to optimize standby time. The screen turns off completely a few seconds after you last press a key.

## **To Set the Screen Light**

- 1 ► **Settings** ► **Display** tab ► **Light**.
- 2 Set screen light to **On**, **Off**, **Automatic** or **Power save**.

## **To activate the screen**

Press .

## **Startup Screen**

When you turn the phone on or off, a startup screen appears.


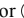
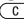

## **To Select a Startup Screen**

► **Settings** ► **Display** tab ► **Startup Screen**, select a file.

## **Calculator**

The calculator can add, subtract, divide and multiply.

## **To Use the Calculator**

- **Organizer** ► **Calculator**.
- Press  or  to select  $\div$   $\times$  - + . % =
  - Press  to delete the figure.
  - Press  to enter a decimal point.

## SIM Card Lock

The SIM card lock protects your subscription, but not your phone itself, from unauthorized use. If you change SIM cards, the phone still works with the new SIM card.

Most SIM cards are locked at the time of purchase. If the SIM card lock is on, you have to enter a PIN (Personal Identity Number) every time you turn on your phone.

If you enter your PIN incorrectly three times in a row, the SIM card is blocked. This is indicated by the message **PIN blocked**. To unblock it, you need to enter your PUK (Personal Unblocking Key). Your PIN and PUK are supplied by your service provider. You can edit your PIN and select a new four- to eight-digit PIN.



*If the message **Codes do not match**. appears when you edit your PIN, you entered the new PIN incorrectly.*

*If the message **Wrong PIN**. appears, followed by **Old PIN**:, you entered your old PIN incorrectly.*

### To Unblock Your SIM Card

- 1 When **PIN blocked**. is displayed, enter your PUK ► **OK**.
- 2 Enter a new four- to eight-digit PIN ► **OK**.
- 3 Re-enter the new PIN to confirm ► **OK**.

### To Edit Your PIN

- 1 ► **Settings** ► **General** tab ► **Locks** ► **SIM Lock** ► **Change PIN**.
- 2 Enter your PIN ► **OK**.
- 3 Enter a new four- to eight-digit PIN ► **OK**.
- 4 Re-enter the new PIN to confirm ► **OK**.

## **To Turn the SIM Card Lock On or Off**

- 1 ▶ Settings ▶ General tab ▶ Locks ▶ SIM Lock ▶ Protection and select **On** or **Off**.
- 2 Enter your PIN ▶ **OK**.

## **Keypad Lock**

Lock the keypad to avoid dialing a number by accident. You can still answer an incoming call and the keypad locks again after it. The keypad remains locked until you unlock it manually.



*Calls to the international emergency number 112 can still be made, even when the keypad is locked.*

## **To Lock and Unlock the Keypad Manually**

- Press **\*a/A** ▶ **Lock Keys**.
- To unlock the keypad, press **\*a/A** ▶ **Unlock**.

## **Automatic Keylock**

Automatic keylock in standby means the keypad is locked a short while after you last press a key.

## **To Set the Automatic Keylock**

- ▶ Settings ▶ General tab ▶ Locks ▶ Automatic Keylock.

## **Phone Lock**

The phone lock protects the phone against unauthorized use if it is stolen and the SIM card is exchanged. You can change the phone lock code (0000) to any four- to eight-digit personal code.

## **Phone Lock On**

If the phone lock is on, enter your code ▶ **OK**.

## Automatic Phone Lock

If the phone lock is set to automatic, you do not need to enter your phone lock code until a different SIM card is inserted in the phone.



*It is important that you remember your new code. If you should forget it, you will need to bring your phone in to your local Sony Ericsson retailer.*

### To Set the Phone Lock

- 1 ▶ **Settings** ▶ **General tab** ▶ **Locks** ▶ **Phonelock** ▶ **Protection** and select an alternative.
- 2 Enter the phone lock code ▶ **OK**.

### To Edit Your Phone Lock Code

- ▶ **Settings** ▶ **General tab** ▶ **Locks** ▶ **Phonelock** ▶ **Change Code**.

## Code Memo

You can save up to 10 codes in the code memo.

### Checkword and Security

To confirm that you have entered the correct passcode for the code memo you must enter a checkword. When you enter your passcode to open the code memo, the checkword is shown for a short time. If the passcode is correct, the correct codes are shown. If you enter the incorrect passcode, the checkword and the codes that are shown are also incorrect.

### To Open Code Memo for the First Time

- 1 ▶ **Organizer** ▶ **Code Memo**. Instructions appear ▶ **Continue**.
- 2 Enter a four-digit passcode ▶ **Continue**.
- 3 Re-enter the new passcode to confirm.
- 4 Enter a checkword (maximum 15 characters) ▶ **Done**.  
The checkword can consist of both letters and numbers.

### **To Add a New Code**

- 1 ▶ **Organizer ▶ Code Memo** and enter your passcode  
▶ **Continue ▶ New Code ▶ Add.**
- 2 Enter a name associated with the code, for example,  
the name of the credit card company ▶ **Continue.**
- 3 Enter the code ▶ **Done.**

### **To Change the Passcode**

- 1 ▶ **Organizer ▶ Code Memo** and enter your passcode  
▶ **Continue ▶ More ▶ Change Passcode.**
- 2 Enter your new passcode ▶ **Continue.**
- 3 Re-enter the new passcode ▶ **Continue.**
- 4 Enter a checkword ▶ **Done.**

### **Forgot Your Passcode?**

Enter any passcode to access the code memo function.  
The checkword and codes that are then shown are incorrect.  
You must now reset the code memo.

### **To Reset Code Memo**

- 1 ▶ **Organizer ▶ Code Memo** and enter your passcode  
▶ **Continue ▶ More ▶ Reset.**
- 2 **Reset code memo?** appears ▶ **Yes.** The code memo is  
reset and all entries are cleared. The next time you enter  
the code memo, you must start at ➡ *61 To Open Code  
Memo for the First Time.*

## Troubleshooting

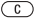
Some problems require that you call your service provider, but most of the problems you can easily correct yourself.

Before handing your phone in for repair, copy all saved files, messages and information to another device as content may be lost during repair.

### Gray Menu Options



Gray text indicates a function that is temporarily unavailable. Since you cannot send themes, pictures and sounds that are copyright-protected, the **Send** menu may be unavailable.

### The Phone is Slow to Respond

Select and delete unwanted content by pressing  and then restart the phone ➔ *9 To Turn the Phone On and Off*.

### No Indication of Charging

When you start charging a battery that is empty or a battery that has not been used for a long time, it may take up to 30 minutes before the battery icon appears in the screen.

 *If the setting for screen light is power save, press  to activate the screen for indication of charging.*

### The Phone Cannot be Switched On

Recharge the battery ➔ *6 To Remove the Cover and Insert the SIM Card* or ➔ *71 Battery Use and Care*.





### Charging a Non Sony Ericsson Battery

If the battery you are using is not a Sony Ericsson approved battery ➔ *71 Battery Use and Care*.



## Menu Language

If the wrong language is shown, you can select from standby:

- Press  0000  for English.
- Press  8888  for Automatic – SIM card determined.

## Insert SIM

There is no SIM card in the phone or you may have inserted it incorrectly. Insert a SIM card ➡ *6 To Remove the Cover and Insert the SIM Card.*

## Insert Correct SIM Card

The phone only works with certain SIM cards. Insert the correct SIM card.

## SOS Calls Only

You are within range of a network, but you are not allowed to use it. Some service providers allow emergency calls to the international emergency number 112 ➡ *17 Emergency Calls.*

## No Network

You have to move to get a signal that is strong enough.

## Wrong PIN/Wrong PIN2

You have entered your PIN or PIN2 incorrectly.

Enter the correct PIN or PIN2 ► **Yes** ➡ *59 SIM Card Lock.*

## Codes do Not Match

When you want to change a security code, confirm the new code by entering it again ➡ *59 SIM Card Lock.*

## PIN Blocked/PIN2 Blocked

You have entered your PIN or PIN2 incorrectly three times in a row. To unblock ➡ *59 SIM Card Lock.*

## **PUK Blocked**

You entered your personal unblocking key code (PUK) incorrectly 10 times in a row. Contact your service provider.

## **Phone Locked**

The phone is locked. To unlock the phone ➡ *60 Phone Lock*.

## **Phone Lock Code**

Your phone comes with the phone lock code, 0000. You can change it to any four- to eight-digit code ➡ *60 Phone Lock*.

## **Number Not Permitted**

Fixed dialing is activated and the number you have dialed is not on your fixed numbers list ➡ *28 Fixed Dialing*.

## **Reset the Phone**

Reset the phone by deleting the changes that you have made to settings, and the content that you have added or edited.

- If you select **Reset Settings**, changed settings are deleted.
- If you select **Reset All**, in addition to your changes to settings, all contacts, messages, personal data, and downloaded content, received or edited are also deleted.

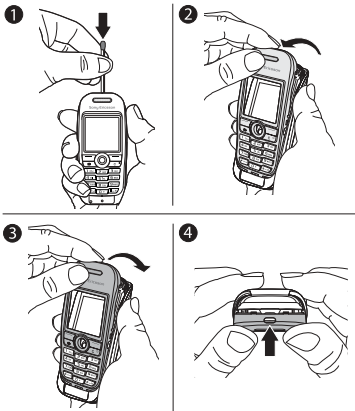


*If you select **Reset All**, content such as melodies and pictures that you have downloaded, received or edited are also deleted. Furthermore, some original files that were in the phone are also deleted but can be downloaded from [www.sonyericsson.com/support](http://www.sonyericsson.com/support).*

## **To Reset the Phone**

- 1 ▶ **Settings** ▶ **General** tab ▶ **Master Reset**.
- 2 ▶ **Reset Settings** or ▶ **Reset All**.
- 3 A text box appears. ▶ **No** to cancel or ▶ **Yes** to continue.
- 4 Enter the phone lock code (0000 or the new code if you have changed it) ▶ **OK**.

## Exchangeable Front Covers



### **To Change the Front Cover**

- 1 Use a match to press the catch down and push the cover forward to release the front cover.
- 2 Gently pull the front cover away and remove the keypad.
- 3 Place the keypad on the new front cover. Insert the notches into the corresponding slots on the phone and gently lift the new front cover over the catch.
- 4 Press to secure the front cover into place.

# Additional Information

## Sony Ericsson Consumer Web Site

At [www.SonyEricsson.com/support](http://www.SonyEricsson.com/support) there is a support section where help and tips are only a few clicks away. Here you find the latest PC software updates and tips on how to use your product more efficiently.

## Accessible Solutions/Special Needs

You can use your TTY terminal with your Sony Ericsson mobile phone (with the necessary accessory). For information on Accessible Solutions for individuals with special needs call the Sony Ericsson Special Needs Center at 877 878 1996 (TTY) or 877 207 2056 (voice), or visit the Sony Ericsson Special Needs Center at [www.SonyEricsson-snc.com](http://www.SonyEricsson-snc.com).

## Guidelines for Safe and Efficient Use

Please read this information before using your mobile phone.



## Recommendations

- Always treat your product with care and keep it in a clean and dust-free place.
- Do not expose your product to liquid or moisture or humidity.
- Do not expose your product to extreme high or low temperatures.
- Do not expose your product to open flames or lit tobacco products.
- Do not drop, throw or try to bend your product.
- Do not paint your product.
- Do not use your product near medical equipment without requesting permission.
- Do not use your product when in, or around aircraft, or areas posted "turn off two-way radio".



- Do not use your product in an area where a potentially explosive atmosphere exists.
- Do not place your product or install wireless equipment in the area above your car's air bag.
- Do not attempt to disassemble your product. Only Sony Ericsson-authorized personnel should perform service.



## Antenna

Only use an antenna that has been specifically designed by Sony Ericsson for your mobile phone. Use of unauthorized or modified antennas could damage your mobile phone and may violate regulations, causing loss of performance and SAR levels above the recommended limits (see below).

## Efficient Use

Hold your mobile phone as you would any other phone. Do not cover the top of the phone when in use, as this affects call quality and may cause the phone to operate at a higher power level than needed, thus shortening talk and standby times.

## Radio Frequency (RF) Exposure and SAR

Your mobile phone is a low-power radio transmitter and receiver. When it is turned on, it emits low levels of radio frequency energy (also known as radio waves or radio frequency fields).

Governments around the world have adopted comprehensive international safety guidelines, developed by scientific organizations, e.g. ICNIRP (International Commission on Non-Ionizing Radiation Protection) and IEEE (The Institute of Electrical and Electronics Engineers Inc.) through periodic and thorough evaluation of scientific studies. These guidelines establish permitted levels of radio wave exposure for the general population. The levels include a safety margin designed to assure the safety of all persons, regardless of age and health, and to account for any variations in measurements. Specific Absorption Rate (SAR) is the unit of measurement for the amount of radio frequency energy absorbed by the body when using a mobile phone. The SAR value is determined at the highest certified

power level in laboratory conditions, but the actual SAR level of the mobile phone while operating can be well below this value. This is because the mobile phone is designed to use the minimum power required to reach the network.

Variations in SAR below the radio frequency exposure guidelines do not mean that there are variations in safety. While there may be differences in SAR levels among mobile phones, all Sony Ericsson mobile phone models are designed to meet radio frequency exposure guidelines.

Before a phone model is available for sale to the public, it must be tested and certified to the FCC that it does not exceed the limit established by the government-adopted requirement for safe exposure. The tests are performed in positions and locations (that is, at the ear and worn on the body) as required by the FCC for each model. For body worn operation, this phone has been tested and meets FCC RF exposure guidelines when the handset is positioned a minimum of 15 mm from the body without any metal parts in the vicinity of the phone or when used with the original Sony Ericsson body worn accessory intended for this phone. Use of other accessories may not ensure compliance with FCC RF exposure guidelines.

A separate leaflet with SAR information for this mobile phone model is included with the material that comes with this mobile phone. This information can also be found, together with more information on radio frequency exposure and SAR, on [www.SonyEricsson.com](http://www.SonyEricsson.com).

## **Driving**

Please verify whether local laws and regulations restrict the use of mobile phones while driving or require drivers to use handsfree solutions. We recommend that you use only Sony Ericsson handsfree solutions intended for use with your product. Please note that because of possible interference to electronic equipment, some vehicle manufacturers forbid the use of mobile phones in their vehicles unless a handsfree kit with an external antenna supports the installation.

Always pay full attention to driving and pull off the road and park before making or answering a call if driving conditions so require.

## Personal Medical Devices

Mobile phones may affect the operation of cardiac pacemakers and other implanted equipment. Please avoid placing the mobile phone over the pacemaker, e.g. in your breast pocket. When using the mobile phone, place it at the ear opposite the pacemaker. If a minimum distance of 6 inches (15 cm) is kept between the mobile phone and the pacemaker, the risk of interference is limited. If you have any reason to suspect that interference is taking place, immediately turn off your mobile phone. Contact your cardiologist for more information. For other medical devices, please consult the manufacturer of the device.

## CHILDREN

DO NOT ALLOW CHILDREN TO PLAY WITH YOUR MOBILE PHONE OR ITS ACCESSORIES. THEY COULD HURT THEMSELVES OR OTHERS, OR COULD ACCIDENTALLY DAMAGE THE MOBILE PHONE OR ACCESSORY. YOUR MOBILE PHONE OR ITS ACCESSORY MAY CONTAIN SMALL PARTS THAT COULD BE DETACHED AND CREATE A CHOKING HAZARD.



## Disposal of Old Electrical & Electronic Equipment

This symbol on the product or on its packaging indicates that this product shall not be treated as household waste. Instead it shall be handed over to the applicable collection point for the recycling of electrical and electronic equipment. By ensuring this product is disposed of correctly, you will help prevent potential negative consequences for the environment and human health, which could otherwise be caused by inappropriate waste handling of this product. The recycling of materials will help to conserve natural resources. For more detailed information about recycling of this product, please contact your local city office, your household waste disposal service or the shop where you purchased the product.



## Power Supply

Connect the AC power adapter only to designated power sources as marked on the product. Make sure the cord is positioned so that it will not be subjected to damage or stress. To reduce risk of electric shock, unplug the unit from any power source before attempting to clean it. The AC power adapter must not be used outdoors or in damp areas. Never alter the cord or plug. If the plug will not fit into the outlet, have a proper outlet installed by a qualified electrician.

## Emergency Calls

Mobile phones operate using radio signals, which cannot guarantee connection under all conditions. Therefore you should never rely solely upon any mobile phone for essential communications (e.g. medical emergencies).

Emergency calls may not be possible on all cellular networks or when certain network services and/or mobile phone features are in use. Check with your local service provider.

## Battery Use and Care

We recommend that you fully charge the battery before you use your mobile phone for the first time. The battery can only be charged in temperatures between +41°F (+5°C) and +113°F (+45°C).

A new battery or one that has not been used for a long time could have reduced capacity the first few times it is used.

The talk and standby times depend on the actual transmission conditions when using the mobile phone. If the mobile phone is used near a base station, less power is required and talk and standby times are prolonged.

- **Warning!** May explode if disposed of in fire.
- Use only Sony Ericsson branded original batteries and chargers intended for use with your mobile phone. Other chargers may not charge sufficiently or may produce excessive heat. Using other batteries and chargers could be dangerous.
- Do not expose the battery to liquid.
- Do not let the metal contacts on the battery touch another metal object. This could short-circuit and damage the battery.



- Do not disassemble or modify the battery.
- Do not expose the battery to extreme temperatures, never above +140°F (+60°C). For maximum battery capacity, use the battery at room temperature.
- Turn off your mobile phone before removing the battery.



- Keep out of children's reach.
- Use the battery for the intended purpose only.
- Do not allow the battery to be put into the mouth.

Battery electrolytes may be toxic if swallowed.



## Disposing of the Battery

Please check local regulations for disposal of batteries or call your local Sony Ericsson Call Center for information.

The battery should never be placed in municipal waste.

Use a battery disposal facility if available.



## Limited Warranty

Sony Ericsson provides this Limited Warranty for your mobile phone and original accessory delivered with your mobile phone (hereinafter referred to as "Product").

Should your Product need warranty service, please return it to the dealer from whom it was purchased, or contact your local Sony Ericsson Call Center (national rates may apply) or visit [www.SonyEricsson.com](http://www.SonyEricsson.com) to get further information.

## Our Warranty

Subject to the conditions of this Limited Warranty, Sony Ericsson warrants this Product to be free from defects in design, material and workmanship at the time of its original purchase by a consumer, and for a subsequent period of one (1) year.

## What We Will Do

If, during the warranty period, this Product fails to operate under normal use and service, due to defects in design, materials or workmanship, Sony Ericsson authorized distributors or service partners, in the country/region\* where you purchased the Product,

will, at their option, either repair or replace the Product in accordance with the terms and conditions stipulated herein.

Sony Ericsson and its service partners reserve the right to charge a handling fee if a returned Product is found not to be under warranty according to the conditions below.

Please note that some of your personal settings, downloads or other information may be lost when your Sony Ericsson Product is repaired or replaced. At present Sony Ericsson may be prevented by applicable law, other regulation or technical restrictions from making a backup copy of certain downloads. Sony Ericsson does not take any responsibility for any lost information of any kind and will not reimburse you for any such loss. You should always make backup copies of all the information stored on your Sony Ericsson Product such as downloads, calendar and contacts before handing in your Sony Ericsson Product for repair or replacement.

## Conditions

- 1 The warranty is valid only if the original proof of purchase issued to the original purchaser by an, for this Product, Sony Ericsson authorized dealer, specifying the date of purchase and serial number\*\*, is presented with the Product to be repaired or replaced. Sony Ericsson reserves the right to refuse warranty service if this information has been removed or changed after the original purchase of the Product from the dealer.
- 2 If Sony Ericsson repairs or replaces the Product, the repaired or replaced Product shall be warranted for the remaining time of the original warranty period or for ninety (90) days from the date of repair, whichever is longer. Repair or replacement may involve the use of functionally equivalent reconditioned units. Replaced parts or components will become the property of Sony Ericsson.
- 3 This warranty does not cover any failure of the Product due to normal wear and tear, or due to misuse, including but not limited to use in other than the normal and customary manner, in accordance with the Sony Ericsson instructions for use and maintenance of the Product. Nor does this warranty cover any failure of the Product due to accident, software or hardware modification or adjustment, acts of God or damage resulting from liquid. A rechargeable battery

can be charged and discharged hundreds of times. However, it will eventually wear out – this is not a defect. When the talk-time or standby time is noticeably shorter, it is time to replace your battery. Sony Ericsson recommends that you use only batteries and chargers approved by Sony Ericsson. Minor variations in screen brightness and color may occur between phones. There may be tiny bright or dark dots on the screen. These are called defective pixels and occur when individual dots have malfunctioned and cannot be adjusted. Two defective pixels are deemed acceptable. Minor variations in camera image appearance may occur between phones. This is nothing uncommon and is not regarded as a defective camera module.

- 4 Since the cellular system on which the Product is to operate is provided by a carrier independent from Sony Ericsson, Sony Ericsson will not be responsible for the operation, availability, coverage, services or range of that system.
- 5 This warranty does not cover Product failures caused by installations, modifications, or repair or opening of the Product performed by a non-Sony Ericsson authorized person.
- 6 The warranty does not cover Product failures which have been caused by use of accessories or other peripheral devices which are not Sony Ericsson branded original accessories intended for use with the Product.
- 7 Tampering with any of the seals on the Product will void the warranty.
- 8 **HERE ARE NO EXPRESS WARRANTIES, WHETHER WRITTEN OR ORAL, OTHER THAN THIS PRINTED LIMITED WARRANTY. ALL IMPLIED WARRANTIES, INCLUDING WITHOUT LIMITATION THE IMPLIED WARRANTIES OF MERCHANTABILITY OR FITNESS FOR A PARTICULAR PURPOSE, ARE LIMITED TO THE DURATION OF THIS LIMITED WARRANTY. IN NO EVENT SHALL SONY ERICSSON OR ITS LICENSORS BE LIABLE FOR INCIDENTAL OR CONSEQUENTIAL DAMAGES OF ANY NATURE WHATSOEVER, INCLUDING BUT NOT LIMITED TO LOST PROFITS OR COMMERCIAL LOSS; TO THE FULL EXTENT THOSE DAMAGES CAN BE DISCLAIMED BY LAW.**

Some countries/states do not allow the exclusion or limitation of incidental or consequential damages, or limitation of the duration of implied warranties, so the preceding limitations or exclusions may not apply to you.

The warranty provided does not affect the consumer's statutory rights under applicable legislation in force, nor the consumer's rights against the dealer arising from their sales / purchase contract.

### **\*European Union (EU)**

If you have purchased your Product in an EU country you can have your Product serviced, under the conditions set out above, within the warranty period in any EU country where an identical Product is sold by an authorized Sony Ericsson distributor. To find out if your Product is sold in the EU country you are in, please call the local Sony Ericsson Call Center. Please observe that certain services may not be possible elsewhere than in the country of original purchase, for example due to the fact that your Product may have an interior or exterior which is different from equivalent models sold in other EU countries. It may not be possible to repair SIM-locked Products.

\*\* In some countries/regions additional information is requested. If so, this is clearly shown on the valid proof of purchase.

### **FCC Statement**

This device complies with Part 15 of the FCC rules.

Operation is subject to the following two conditions:

- (1) This device may not cause harmful interference, and
- (2) This device must accept any interference received, including interference that may cause undesired operation.



# Index

## A

- alarm clock 53
- alerts 45
- answering service 22
- applications 47

## B

- battery
  - alien 67
  - charging and inserting 7
- bookmarks 49
- business cards 32

## C

- calculator 58
- calendar 53
- call credit limit 30
- call list 21
- call time and cost 29
- call waiting 25
- calls
  - accepting 27
  - answering 16
  - emergency 17
  - from phonebook 20
  - handling two calls 26
  - hold 25

- making 9, 16
- receiving 9
- recording 46
- restricting 28
- certificates 51
- closed user groups 30
- code memo 61
- codes
  - PIN 8
  - PUK 7, 65
- conference calls 26
- contacts 18
  - groups of 31
  - synchronizing 51
- cookies 50

## D

- date 53

## E

- email 38
- emergency calls 17
- emergency numbers 17

## F

- file manager 13
- formatting text 34
- front cover 66

## **G**

games 47  
groups 31

## **H**

HTTP 48

## **I**

icons 10  
Internet 48

## **J**

Java™ 50

## **K**

keypad lock 60

## **L**

language  
    phone 14  
    writing 14

light 58

locks

    phone lock 65  
    SIM card 59

## **M**

magic word 23  
media player 43–44  
melodies 44

memory

    file manager 13  
    phonebook 18

menus 11

messaging 33

microphone, off/on 17

music 43

MusicDJ™ 45

My friends 40

## **N**

navigation key 12

networks 16

notepad 31

notes 56

## **P**

phone lock 60, 65

phonebook

    adding contacts 18  
    checking memory 20  
    default 17  
    synchronizing 51

picture messages 36–38

pictures 41–42

PIN code

    changing 59  
    entering 9

PlayNow™ 43  
power save 58  
profiles 57  
PUK 59, 65

## **R**

recording  
    calls 46  
    sounds 46  
    voice commands 22–24  
reset the phone 65  
restricted dialling 28  
ringtones 44

## **S**

safety guidelines 67  
screen light 58  
screen saver 42  
security  
    code memo 61  
    Internet 50–51  
    SIM card lock 59  
sending  
    appointments 56  
    business cards 32  
    contacts 19

    melodies and ringtones 46  
    notes 56  
    pictures 42  
    tasks 56  
    themes 47  
settings  
    Internet, picture messages,  
    email 48  
    Java™ 50  
    setup wizard 9  
    time and date 53  
Shortcuts 12  
SIM card  
    copying to/from 19  
    lock 59  
    phonebook 19  
    saving numbers on 19  
    unblocking 59  
SIM numbers 19  
sound recorder 46  
speaker volume 16  
startup screen 58  
stopwatch 57  
streaming media 44  
synchronizing 51–52

**T**

- T9™ Text Input
  - entering letters 14
- tasks 55–56
- templates
  - for picture messages 38
  - for text messages 35
- text input 14
- text messages 33–36
- themes 47
- time 53
- timer 57
- troubleshooting 63
- turning on/off
  - phone 9
  - phone lock 61
  - ringtones, melodies 44
  - SIM lock protection 60
- two voice lines 27

**V**

- vibrating alert 45
- video clips 43
- voice answering 24
- voice control 22
- voice dialling 22
- voicemail 22

**volume**

- changing 16
- setting ringtone 45

**W**

- WAP 48



## Free Manuals Download Website

<http://myh66.com>

<http://usermanuals.us>

<http://www.somanuals.com>

<http://www.4manuals.cc>

<http://www.manual-lib.com>

<http://www.404manual.com>

<http://www.luxmanual.com>

<http://aubethermostatmanual.com>

Golf course search by state

<http://golfingnear.com>

Email search by domain

<http://emailbydomain.com>

Auto manuals search

<http://auto.somanuals.com>

TV manuals search

<http://tv.somanuals.com>