

# XPX00/910 MOBILE

Operative Skin for Tracker 4



## USER MANUAL

Full version 1.05 (1)

# CONTENTS

<b>1. Welcome .....</b>	<b>3</b>
<b>2. License .....</b>	<b>“</b>
<b>3. Compatibility &amp; Requirements.....</b>	<b>4</b>
<b>4. Package content .....</b>	<b>“</b>
<b>5. Installation .....</b>	<b>5</b>
<b>5.1. XPX00/910 MOBILE O.S. installation (P900/P910 smartphones).....</b>	<b>“</b>
<b>5.2. XPX00 MOBILE O.S. installation (P800 smartphones) .....</b>	<b>6</b>
<b>5.3. Additional XPX00/910 Themes installation (P800/P900/P910 smartphones).....</b>	<b>7</b>
<b>5.4. XPX00/910 Default Theme re-installation (P800/P900/P910 smartphones).....</b>	<b>“</b>
<b>6. Un-installation .....</b>	<b>8</b>
<b>6.1. XPX00/910 MOBILE O.S. un-installation (P800/P900/P910 smartphones) .....</b>	<b>“</b>
<b>6.2. Re-installation initial Theme .....</b>	<b>“</b>
<b>6.3. Icons Packages un-installation (P800/P900/P910 smartphones).....</b>	<b>“</b>
<b>7. XPX00/910 O.S. Mobile sections.....</b>	<b>9</b>
<b>8. Interactive desktop .....</b>	<b>10</b>
<b>9. Today views &amp; Immediate Contacts .....</b>	<b>11</b>
<b>10. Thematic windows: a place to each application .....</b>	<b>12</b>
<b>11. How to create an application shortcut (or quick note) .....</b>	<b>13</b>
<b>12. How to create: speed dial, speed SMS, speed Contact and speed MMS ...</b>	<b>14</b>
<b>13. Support and Updates.....</b>	<b>“</b>

## 1. Welcome

XPX00 and XP910 Operative Skins have been designed to reduce dramatically the time to launch any installed applications, phone services or preinstalled Sony Ericsson programs, in order to keep your shortcuts forever. If you are already a Windows user, you will be facilitated by XPX00/910 Mobile potentialities.

Target of XPX00/910 Mobile is that to offer an interface:

- Interactive, really comparable to Windows eXPerience platform.
- Intuitive and immediate, with reasonable shortcuts, buttons and popups.
- Easy to use and simple to remember, with large and original Symbian icons.
- Integrated in Symbian UIQ 2.1 Interface, now Tracker will seem needful in any smartphone functions.

## 2. License

This licence statement constitutes a legal agreement ("Licence Agreement") between you (either as an individual or a single entity) and Tripodina - software developing company ("TriPoX Software") for the software product ("Software") identified above, including any software, media, and accompanying on-line or printed documentation.

BY INSTALLING, COPYING, OR OTHERWISE USING THE SOFTWARE, YOU AGREE TO BE BOUND BY ALL OF THE TERMS AND CONDITIONS OF THE LICENSE AGREEMENT.

If you have upgraded version of the Software, you may use or transfer the upgrade version of the Software only in accordance with the license Agreement.

Any use of the program which is illegal under international or local law is forbidden by this licence. Any such action is the sole responsibility of the person committing the action.

You may not distribute, copy, emulate, clone, rent, lease and sell the program. Also, you may not modify, decompile, disassemble, otherwise reverse engineer, or transfer the program, or any subset of the program, except to the extent and for the express purposes authorized by applicable law. Any such unauthorised use shall result in immediate and automatic termination of this licence and may result in criminal or civil prosecution.

The program is distributed "AS IS" and you assume full responsibility for determining the suitability of the program and for results obtained.

TriPoX Software makes no warranty that all errors have been or can be eliminated from the program software and, with respect thereto, TriPoX Software shall not be responsible for losses, damages, costs, or expenses of any kind resulting from using or misusing the program including without limitation, any liability for business expenses, machine downtime, damages experienced by you or any third person as a result of any deficiency, defect, bug, error or malfunction.

TriPoX Software shall not be liable for any indirect, special, incidental, or consequential damages relating to or arising out of the subject matter of this Agreement or actions taken thereunder.

NO WARRANTY OF ANY KIND IS EXPRESSED OR IMPLIED. YOU USE THE PROGRAM AT YOUR OWN RISK. TRIPOX SOFTWARE DISCLAIMS ALL WARRANTIES, EITHER EXPRESS OR IMPLIED, INCLUDING THE WARRANTIES OF MERCHANTABILITY AND FITNESS FOR A PARTICULAR PURPOSE. NOBODY WILL BE LIABLE FOR DATA LOSS, DAMAGES, LOSS OF PROFITS OR ANY OTHER KIND OF LOSS WHILE USING OR MISUSING THIS SOFTWARE.

If you do not agree with the terms of this licence you must remove Software files from your storage devices and cease to use the Software.

Thank you for using our products!

### 3. Compatibility & Requirements

XPX00 O.S. Mobile is only designed for SE P800/P900 smartphones. XP910 O.S. Mobile is only designed for SE P910 smartphones.

It requires 800KB of free RAM and 3.3MB (full installation with included icons packages) of free space disk. You must have "Tracker 4.04" or above (available from Handango) installed on your phone in order for this product to work.

For XPX00/910 Mobile full functionality, you have to install on your phone the following products:

- Fileman (shareware and included in Tracker license)
- Taskman (shareware and included in Tracker license)
- Opera Browser (shareware)
- Netfront Browser (shareware)
- Ebook by Symbianware (shareware)
- Ebook Maker by Symbianware (free)
- Escumm emulator (free)
- Goboy emulator (free)
- Frodo emulator (free)
- Stacker, a zip compressor by Symbianware (shareware)
- FilesearchPro by DeVeLoPeR (free/shareware)

Only for P800 users:

- Magic Themes 2.01 (or above) by Symbianwave (shareware)

### 4. Package Contents

- eXPerience Mobile 1.05 Standard Edition. This package (a single sis file) includes:
  - ✓ Standard Theme
  - ✓ Logon/Logoff sounds.
  - ✓ Add speed Dial/SMS/MMS shortcuts icons.
- Aquarium Theme (\*) installer add-on (sis file)
- Future Theme (\*) installer add-on (sis file)
- Standard Theme (\*) re-installer (sis file)
- Two Icons packages. More than 650 shortcuts icons designed and resized in 32x32 pixels for UIQ Symbian programs:
  - ✓ Application Icons Package 1.01 (sis file)
  - ✓ Game Icons Package 1.01 (sis file)
- Installation instructions and shortcuts Tutorial (this pdf file)

(\*) Theme re/installer add-ons substitute the Operative Skin and Theme Standard Edition files only.

## 5. Installation

### 5.1. XPX00/910 MOBILE O.S. installation (P900/P910 smartphones)

First you must install Tracker 4.04 (or above) in your phone. Next you have to follow these steps:

- 1) Run (double click) eXperiencePackEN.exe (\*) package file and extract it.
- 2) Link your P900/P910 device to PC through usb cable, irda port or Bluetooth connection.
- 3) Launch, from your PC, XPX00/910 Mobile O.S. package (XPX00Mobile.sis or XP910Mobile.sis).
- 4) During sis file installation you can select the following options:
  - Skin Activation (\*\*)
  - Theme Option: it installs XPX00/910 Theme Standard into your phone.
  - Flip Log Sounds option: it installs Logon/Logoff alert sounds for Tracker.
- 5) During installation open your P900/P910 flip, please!
- 6) Theme installation: When the "Installation Completed" Message is displayed on your PC monitor you can see (for some seconds) in your P900/P910 screen the Theme Popup. Click: Apply.
- 7) Close and restart Tracker.
- 8) Icons Packages (\*\*\*) installation: there are 4 installer files in XPX00/XP910 package. If you want to install the packages in internal memory of your device, you have to run these files into the following folders:

P900:

- IconsPackages / InstallMEM / XPX00ApplCoMEM1.01.sis (it installs Application Icons in C)
- IconsPackages / InstallMEM / XPX00ApplCoMEM1.01.sis (it installs Game Icons in C)

P910:

- IconsPackages / InstallMEM / XP910ApplCoMEM1.01.sis (it installs Application Icons in C)
- IconsPackages / InstallMEM / XP910ApplCoMEM1.01.sis (it installs Game Icons in C)

Instead, if you want to install icons packages in your external disk (memory stick Duo/DuoPro) you have to run:

P900:

- IconsPackages / InstallMSD / XP910ApplCoMSD1.01.sis (it installs Application Icons in D)
- IconsPackages / InstallMSD / XP910ApplCoMSD1.01.sis (it installs Game Icons in D)

P910:

- IconsPackages / InstallMSD / XP910ApplCoMSD1.01.sis (it installs Application Icons in D)
- IconsPackages / InstallMSD / XP910ApplCoMSD1.01.sis (it installs Game Icons in D)

(\*) The package name is different for each language.

Example: eXperiencePackXX.exe  
XX= FR (French), SP (Spanish), GE (German), IT (Italian)

(\*\*) Skin Activation Option is designed for Tracker 4.04. If you have a new Tracker release this option could not work correctly. In this case, during installation, disable it. To activate the skin and the sounds follow these steps:

1. Skin activation: run Tracker, go to skin main Menu button (Skin > Select Skin... > XPX00Mobile.ztr or XP910Mobile.ztr > *click* Select)
2. Log Sounds installation: *click* Star button (*next time indicator*) > *Double Click* Menu > Settings > *Click* the right Arrow *three times* > In Sounds section choose: LogOnXp.mp3 in Flip open and LogOffXp.mp3 in Flip Close > *Click* OK.

Alternatively you can download the XPX00Active.sis or XP910Active.sis file in [XPMobileUpdates](#) webpage.

(\*\*\*) It installs shortcuts icons in your phone under D (or C):\documents)\Media Files\Image\X.XXX(alphabetical folder)

## 5.2. XPX00 MOBILE O.S. installation (P800 smartphones)

First you must install Tracker 4.04 (or above) in your phone. Next you have to follow these steps:

- 1) Run (double click) eXperiencePackEN.exe (\*) package file and extract it.
- 2) Link your P800 device to PC through usb cable, irda port or Bluetooth connection.
- 3) Launch, from your PC, XPX00 Mobile O.S. package (XPX00Mobile.sis).
- 4) During sis file installation you can select the following options:
  - Skin Activation (\*\*)
  - Theme Option: it installs XPX00 Theme Standard into your phone.
  - Flip Log Sounds option: it installs Logon/Logoff alert sounds for Tracker.
- 5) Close and restart Tracker.
- 6) Theme installation. You must install Magic Themes (by Symbianwave): *in XPX00 O.S. Mobile click Start > Setup (4 balls button next to XP800 Mobile title) > click Magic Themes on list > Utility > Import > XPX00Mobile > Done > Select XPX00Mobile and double click on it.*
- 7) Icons Packages (\*\*\*) installation: there are 4 installer files in XPX00 package. If you want to install the packages in internal memory of your device, you have to run these files into following folders:
  - IconsPackages / InstallMEM / XPX00ApplcoMEM1.01.sis (it installs Application Icons in C)
  - IconsPackages / InstallMEM / XPX00ApplcoMEM1.01.sis (it installs Game Icons in C)

Instead, if you want to install icons packages in your external disk (memory stick Duo) you have to run:

- IconsPackages / InstallMSD / XPX00ApplcoMSD1.01.sis (it installs Application Icons in D)
- IconsPackages / InstallMSD / XPX00ApplcoMSD1.01.sis (it installs Game Icons in D)

(\*) The package name is different for each language.  
Example: eXperiencePackXX.exe  
XX= FR (French), SP (Spanish), GE (German), IT (Italian)

(\*\*) Skin Activation Option is designed for Tracker 4.04. If you have a new Tracker release this option could not work correctly. In this case, during installation, disable it. To activate the skin and the sounds follow these steps:

1. Skin activation: run Tracker, go to skin main Menu button (Skin > Select Skin... > XPX00Mobile.ztr > *click* Select)
2. Log Sounds installation: *click* Star button (*next time indicator*) > *Double Click* Menu > Settings > *Click* the right Arrow *three times* > *In Sounds section choose: LogOnXp.mp3 in Flip open and LogOffXp.mp3 in Flip Close > Click* OK.

Alternatively you can download the XPX00Active.sis file in [XPMobileUpdates](#) webpage.

(\*\*\*) It installs shortcuts icons in your phone under D (or C):\documents\ Media Files\ImageX.XXX(alphabetical folder)

### 5.3. XPX00 and XP910 Themes installation (P800/P900/P910 smartphones)

To change theme in your smartphone you have to install XPX00/910 Mobile O.S. first. If you have already installed it you can launch the Theme Installer Addons following these steps:

- 1) *Close Tracker in your phone, in XPX00/910 Mobile click: Start > Close Tracker > Close*
- 2) *Link your P800/P900 device to PC through usb cable, irda port or Bluetooth connection.*
- 3) *Launch from your PC one of the two XPX00/P910 packages: XPX00Aquarium.sis (XP910Aquarium.sis) or XPX00Future.sis (XP910Future.sis) into Addons folder.*
- 4) *To install a new Theme you have to follow:*
  - step 6) in 5.1 section for P900/P910 smathphones.
  - step 6) in 5.2 section for P800 smathphones.

Note: If you change Theme using these files you will not lose your favorite shortcuts in XPX00 Mobile O.S. windows.

### 5.4. XPX00 and XP910 Default Theme re-installation (P800/P900/P910 smartphones)

If you wish to reapply the original Standard Theme you can launch the Theme Uninstaller. You have to follow the same simple steps (already seen in XPX00/910 Themes installation section):

- 1) *Close Tracker in your phone, in XPX00/910 Mobile click: Start > Close Tracker > Close*
- 2) *Link your P800/P900/P910 device to PC through usb cable, irda port or Bluetooth connection.*
- 3) *Launch from your PC the additional Theme Uninstaller utility: XPX00Default.sis (XPX910Default.sis) into Default folder.*
- 4) *To install the original Standard Theme you have to follow:*
  - step 6) in 5.1 section for P900/P910 smartphones.
  - step 6) in 5.2 section for P800 smartphones.

Note: If you want to reapply the Standard Theme (after the Aquarium/Future Theme installation) and don't want to lose your favorite shortcuts, in XPX00/910 Mobile O.S. windows, run this file.

## 6. Un-installation

### 6.1. XPX00 and XP910 MOBILE O.S. un-installation (P800/P900/P910 smartphones)

If you want the full un-installation of XPX00/910 Mobile Package in your phone you have to follow these steps:

1. *In XPX00/910 Mobile click: Start > Close Tracker > Exit*
2. *In Application Section click: Applications > Uninstall > choose XPX00/910 Mobile O.S. on list > Uninstall > Yes*

### 6.2. Re-installation initial Theme

To reinstall in your phone the initial theme you have to:

- P900/P910 devices: *go to Application section, choose Control Panel on list, click on Themes, select your initial theme on list (example: classical), click Apply button.*
- P800 devices: *run Magic Themes > Utility > Set Default*

### 6.3. Icon Packages un-installation (P800/P900/P910 smartphones)

If you have to create your favorite shortcuts in XPX00/910 Mobile and want to have more free space in your disk (where you have installed the icons packages) you can uninstall these packages without worry.

To delete these packages in your phone you have to follow these steps:

1. *In XPX00/910 Mobile click: Start > Setup (4 balls button next to XP800/XP900/P910 Mobile title)*
2. *In Application Section click: Applications > Uninstall > choose XPX00/910 Application (or Game) Icons Package on list > Uninstall > Yes*

Note: Uninstalling the icon packages all shortcuts created in the skin windows will stay in their place.



## 7. XPX00/910 O.S. Mobile sections

In eXPerience Mobile Skin there are 13 main sections (with 48 different pages). They are:

- Interactive Desktop
- Today Views
- Immediate Contacts Windows
- Mobile Office Windows
- E-books Windows
- Calculation Windows
- Messaging Windows
- Imaging Windows
- Multi-media Windows
- Games Windows
- Emulators Windows
- Utilities Windows
- Connections Windows

## 8. Interactive desktop

The desktop area is for whatever shortcuts you wish, whether they be program shortcuts, notes and other favorite links.

The desktop also includes interactive popups such as: Quick bar, Multi-functions Bar and Start Menu.



### • Quick Bar

On the upper part of the desktop there is the Quick Bar: it's divided in two bars. In the first bar there is the contacts section and in the second bar the Media section.

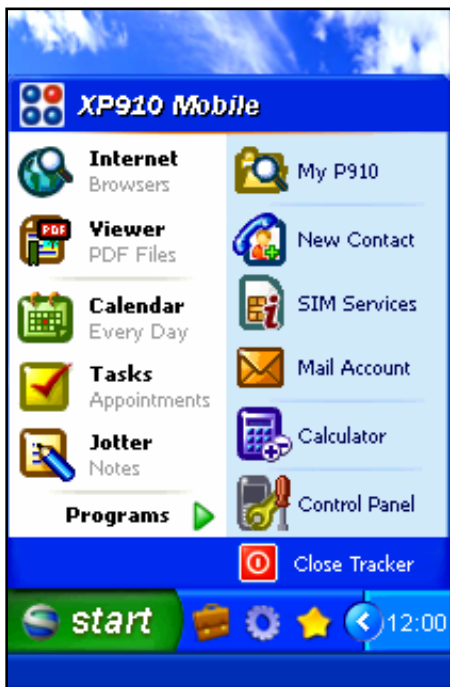
In the Contact section there are immediate links to: Phone, Contacts, New SMS, New MMS, New E-Mail. In the Media section there are immediate links to: Pictures, Video Player, Communicator P9X0 (or Communicam for P800), Music Player and Sound Recorder.

### • Multi-function Bar

On the bottom part of the desktop there is the Multi-Function Bar. It shows Status Bar Label (for example shows application name when a shortcut is selected) and if you push on it will shows the original Px00 Indicator Bar (battery level, signal strength, virtual flip, etc). Next to the Start Menu button there are three control buttons: the Office Bag button (linked to: Today window, Immediate Contacts windows and links/syncro popup), the Memory Manager button (linked to: Close all applications, Compact Memory and Memory Status) and the Star button (linked to: Tracker Menu, Tasks and Favourites).

On the right there is a mobile mini-arrow (it hides add-note and add-shortcuts buttons) and the Time Indicator (linked to date and wake-up popup).

Add-Note icon: You can use a custom icon for notes (01.Note.gif). Use it in "Make transparency" Mode.



### • Start Menu

The Start Menu is divided in two different color sections: white and azure. In white section there are main shortcuts: Browsers popup (linked to: default browser, Opera and NetFront), Viewer (or PDF+ in XP910), Calendar, Tasks, Note and Programs Menu (linked to windows sections). In Azure Section there are: My Pxx0 (Tracker file manager), New Contact, SIM Services, Account, Calculator and Control Panel link.

## 9. Today views & Immediate Contacts

Of course XPX00/910 O.S. Mobile includes Today view in its pages too. Today view is powerful and unique information managing tool (designed for Tracker by Symbianware) for displaying your appointments, tasks and messagings in the customizable, convenient and great looking form.

On the upper bar there are eight buttons:

1. Today Home View.
2. Day View.
3. Week View.
4. Month View.
5. Tasks View.
6. Messages View.
7. Contacts P800/P900/P910.
8. Phone P800/P900/P910.

On the inferior margin of the window there are the contacts buttons to access, from Today page, directly to Immediate Contacts section (and viceversa).



The Immediate Contacts section (9 different windows in alphabetical order) is for personal speed dials, speed contact and speed sms/mms. These windows show:

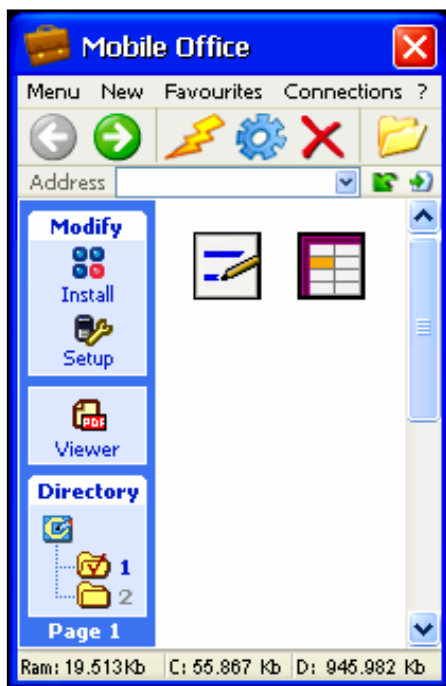
1. The speed dial through person photos.
2. The speed SMS/Contact/MMS (below the speed dial) through appropriate custom icons.

## 10. Thematic windows: a place to each application

The windows sections are for the users to place their personal program shortcuts organized in application categories such as:

1. Office (4 sub-sections)
2. E-books (2 sub-sections)
3. Calculation (4 sub-sections)
4. Messages (4 sub-sections)
5. Pictures & Photo-retouch (4 sub-sections)
6. Multi-Media (2 sub-sections)
7. Symbian Games (8 sub-sections)
8. Emulators (2 sub-sections)
9. Utilities (4 sub-sections)
10. Connections (2 sub-sections)

In each window are located (looking from the up towards the bottom):



- *Menu Bar*

The Menu Bar (below the title window) regroupes the following menus: Main, New, Favourites, Connections and System Information

- *Standard and sub-Standard Bar*

The Standard Bar includes the following buttons: Move Arrows (or application links), Memory Manager buttons (Compact Memory, Tasks and Close all programs), and File manager button.  
The sub-Standard Bar includes: Status Bar Label (with windows-switch function) and add shortcut/note buttons.

- *Window section*

It is structured in two regions: Azure area and White area. In first region are located: Modify section (linked to: application list – *Install* button – and control panel – *Setup* button), specify category section (linked to: internal, SymbianWare or other very popular applications – see table below) and directory section (with folder buttons to move into sub-windows). In the White area the users can place their favorite shortcuts.

To move through the sub-section pages you can use:

1. Navigation green Arrows in Standard Bar.
2. Directory section or Up/down bar in the window right side.

In this table are reported all links into the sections of different windows:

WINDOWS	STANDARD BAR		AZURE AREA	
	Left Buttons	Right Button	Small Buttons	Directory tree
<b>Office</b>	(move arrows)	File manager	Install Control Panel Viewer (or PDF+ on P910)	Yes
<b>E-Books</b>	(move arrows)	File manager	Install Control Panel eBook eBook Maker	Yes
<b>Calculation</b>	(move arrows)	File manager	Install Control Panel Calculator	Yes
<b>Messaging</b>	(move arrows)	File manager	Install Control Panel New SMS	Yes
<b>Imaging</b>	(move arrows)	File manager	Install Control Panel New SMS	Yes
<b>Multi-media</b>	Communicorder P900 (or Communicam P800) Sound Recorder	File manager	Install Control Panel Music Player Video Player	No
<b>Games</b>	(move arrows)	Emulator button / File manager	Solitarie / Install Chess(P900/P910) / Control Panel	Yes
<b>Emulators</b>	FileManager FileSearchPro	Games button	Install Control Panel Escumm Goboy Frodo	No
<b>Utilities</b>	(move arrows)	File manager	Install Control Panel Stacker	Yes
<b>Connections</b>	Opera browser Netfront browser	SE default browser	Sync Remote SIM Info GPRS Data Log Link to: Usb, Irda, BT	No

## 11. How to create an application/game shortcut (or quick note)

### INTERACTIVE DESKTOP

On the Multi-function Bar (next to the Time indicator) click the small left arrow (single click if you want to visualize only add note button, or double click to visualize add shortcut button too).

### WINDOW SECTIONS

On the Sub-Standard Bar (next to the white Status Bar Label) click the green arrow (to add an application shortcut) or the sheet with green arrow (to add a quick note).

### ADD QUICK NOTE

To create new note (default Tracker icon):

- *click add note button > Write your note > Click OK*

To create new note (custom icon):

- *click add note button > Write your note > Click Icon > Select Use custom icon > Select Make Transparency > Click OK > Select 01.Note.gif > Click Select*

### ADD APPLICATION/GAME SHORTCUT

To create new application/game shortcut:

*click add shortcut button > Select Use custom icon > Click Next > Select an Application to link > Click Select > Select in Folder: the appropriate alphabetical folder (example choose 6.PQR folder for QuickWord) > Select the correspondent Application Icon Name > Click Select*

**Important: Before closing Tracker, remember to save the changes otherwise your application/game shoutcuts will lost. To do this you have to go to: main Tracker menu > Click Desktop > Click Save changes now.**

## 12. How to create: speed dial, speed SMS, speed Contact and speed MMS

In Immediate Contacts pages you can add speed links to more frequent contacts in alphabetical order.

### ADD SPEED DIAL

To create new speed dial:

- *click add dial button (a film button) > Select in Shortcut to: the Speed Dial line > Select in Icon Size: the Large icon size line > Click Next > Select your contact > Click Select > Select right phone number > Click Select > Put the icon in its appropriate location*

### ADD SPEED SMS/CONTACT/MMS

To create new speed sms/contact/mms:

- *click add sms/contact/mms button (upper the film buttons) > Select in Shortcut to: the Speed sms / Speed contact / Speed mms line > Select Use custom icon > Select in Icon Size: the Original picture size line > Click Next > Select your contact > Click Select > Select the right phone number > Select the Speed Icon (02.Sms.gif / 03.Contact.gif / 04.Mms.gif) > Click Select > Put the icon in its appropriate location*

**Important: Before closing Tracker, remember to save the changes otherwise your shortcuts added for speed dial/sms/contact/mms will lost. To do this you have to go to: main Tracker menu > Click Desktop > Click Save changes now.**

## 13. Support and Updates

To support, you can contact us to: [XPMobileSupport](#)

For registered users all XPX00/910 updates are free and receive them by e-mail attached file.

You can download the Icons Packages update from: [XPMobileUpdates](#)

## Free Manuals Download Website

<http://myh66.com>

<http://usermanuals.us>

<http://www.somanuals.com>

<http://www.4manuals.cc>

<http://www.manual-lib.com>

<http://www.404manual.com>

<http://www.luxmanual.com>

<http://aubethermostatmanual.com>

Golf course search by state

<http://golfingnear.com>

Email search by domain

<http://emailbydomain.com>

Auto manuals search

<http://auto.somanuals.com>

TV manuals search

<http://tv.somanuals.com>