



Bluetooth® Laser Mouse VGP-BMS55

Operating Instructions
Mode d'emploi



4-116-130-11(1) © 2008 Sony Corporation / Printed in Japan

English

WARNING

To prevent fire or shock hazard, do not expose the unit to rain or moisture.

Owner's Record

The model number and the serial number are located inside the battery compartment of the mouse. Record the serial number in the space provided below. Refer to this number whenever you call your Sony dealer regarding this product.

Model No. VGP-BMS55
Serial No.

For customers in the U.S.A.

This equipment has been tested and found to comply with the limits for a Class B digital device, pursuant to Part 15 of the FCC Rules. These limits are designed to provide reasonable protection against harmful interference in a residential installation. This equipment generates, uses, and can radiate radio frequency energy and, if not installed and used in accordance with the instructions, may cause harmful interference to radio communications. However, there is no guarantee that interference will not occur in a particular installation. If this equipment does cause harmful interference to radio or television reception, which can be determined by turning the equipment off and on, the user is encouraged to try to correct the interference by one or more of the following measures:

- Reorient or relocate the receiving antenna.
- Increase the separation between the equipment and receiver.
- Connect the equipment into an outlet on a circuit different from that to which the receiver is connected.
- Consult the dealer or an experienced radio/TV technician for help.

You are cautioned that any changes or modifications not expressly approved in this manual could void your authority to operate this equipment.

For questions regarding your product or for the Sony Service Center nearest you, call 1-888-476-6972 in the United States or 1-800-961-7669 in Canada.

This device complies with Part 15 of the FCC Rules. Operation is subject to the following two conditions: (1) this device may not cause harmful interference, and (2) this device must accept any interference received, including interference that may cause undesired operation.

For customers in Canada

This Class B digital apparatus complies with Canadian ICES-003.

Operation is subject to the following two conditions: (1) this device may not cause harmful interference, and (2) this device must accept any interference received, including interference that may cause undesired operation of the device.

For customers in the U.S.A. and Canada

This equipment complies with FCC/IC radiation exposure limits set forth for uncontrolled equipment and meets the FCC radio frequency (RF) Exposure Guidelines in Supplement C to OET165 and RSS-102 of the IC radio frequency (RF) Exposure rules. This equipment has very low levels of RF energy that it deemed to comply with maximum permissive exposure evaluation (MPE). But it is desirable that it should be installed and operated with at least 20cm and more between the radiator and person's body (excluding extremities: hands, wrists, feet and ankles).

This device and its antenna(s) must not be co-located or operating with any other antenna or transmitter except Grant condition.

Caution - The use of optical instruments with this product will increase eye hazard.



Located at the bottom

For customers in other countries and regions

The equipment is classified as a CLASS 1 LASER PRODUCT and complies with the Laser Products Safety Standard IEC/EN 60825-1. You can find the following sticker on the bottom of this equipment.



- VAIO is a trademark of Sony Corporation.
- Microsoft, Windows, and Windows Vista are registered trademarks of Microsoft Corporation in the United States and/or other countries.
- The Bluetooth word mark and logos are owned by the Bluetooth SIG, Inc., and any use of such marks by Sony Corporation is under license. Other trademarks and Trade names are those of their respective owners.
- All other names of systems, products, and services are trademarks of their respective owners. In this manual, the ™ or ® marks are not specified.
- In this manual, Microsoft® Windows® XP Home Edition and Microsoft® Windows® XP Professional are referred to as Windows XP.
- In this manual, Windows Vista® Home Basic, Windows Vista® Home Premium, Windows Vista® Business and Windows Vista® Ultimate are referred to as Windows Vista.

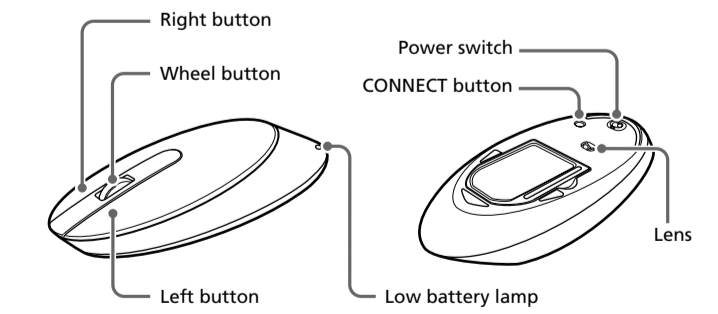
Before Use

- This product is a laser mouse equipped with Bluetooth® technology. The Bluetooth Laser Mouse can be used with the following personal computers (as of August 2008):
- Sony VAIO personal computers equipped with Bluetooth technology and pre-installed with Windows XP (after SP2) or Windows Vista (after SP1).

* Bluetooth technology
Bluetooth wireless technology provides instant short-range connectivity without the need for cumbersome cabling. For details, refer to the manuals included with your personal computer.

Note
Depending on the personal computer or version of software you are using, the mouse may not operate correctly. Consult your nearest Sony dealer about proper operating environments and information about Sony VAIO and Bluetooth compatibility.

Part names



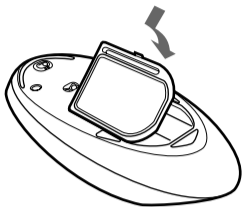
Inserting Batteries into the Mouse

- 1 Set the power switch located on the bottom of the mouse to OFF.
- 2 Open the battery compartment cover and insert the two supplied IEC R6 (size AA) batteries with the correct + - orientation.



- Note**
To prevent battery fluid leaks and damage, observe the following precautions:
- Insert the batteries with the correct + - orientation.
 - Do not charge dry cell batteries.
 - Do not mix old and new batteries, or batteries of a different type.
 - If the mouse has not been used for a long time, remove the batteries.
 - If a battery fluid leak occurs, carefully wipe the battery compartment, and insert new batteries.
 - To prevent accidental operation, be careful not to press any buttons when replacing the batteries.

- 3 Close the battery compartment cover.



Note
Under normal operating conditions, a set of alkaline batteries lasts about three months. When cursor movement becomes sluggish and the communication distance between the mouse and your personal computer decreases, check the low battery lamp on the mouse. Replace the batteries if the low battery lamp is flashing red.

When not using the mouse, set the power switch to OFF. This will make the batteries last longer.

Replacing the batteries

The low battery lamp flashing red indicates that the battery life is running low. Replace the batteries when this occurs.

Enabling Communication between the Mouse and Your Personal Computer

Use the Bluetooth software installed on your personal computer to enable communication between the mouse and your personal computer.

Note
Make sure that the Bluetooth software on your personal computer is activated. For details, refer to the manuals provided with your personal computer.

Before you start

Note
Operation of the Bluetooth software may vary depending on your personal computer. For details on how to use the software, refer to the manuals provided with your personal computer.

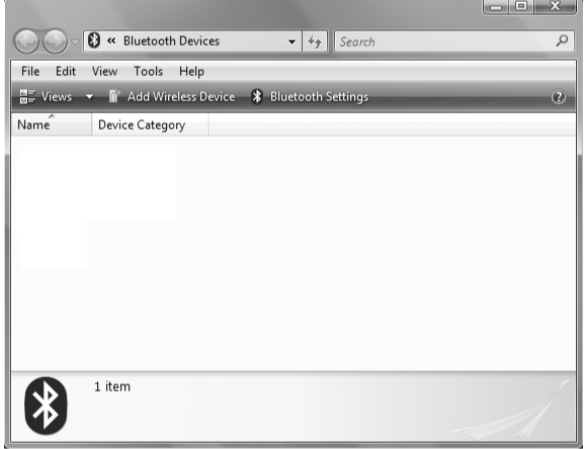
If your personal computer is pre-installed with Windows XP:
Go to "Case C."

If your personal computer is pre-installed with Windows Vista:
Follow the steps below.

- 1 Click (Start), then "Control Panel."
- 2 Click the "Hardware and Sound" icon.
- 3 If the "Bluetooth Devices" icon is in the "Hardware and Sound" window:
Go to step 4.
If the "Bluetooth Devices" icon is not in the "Hardware and Sound" window:
Close the "Control Panel" and go to "Case C."
- 4 Click the "Bluetooth Devices" icon, and verify the contents of the window displayed.

Note
If you switch to Classic View, double-click the "Bluetooth Devices" icon.

If the following "Bluetooth Devices" window is displayed:



Go to "Case A."

If the following "Bluetooth Devices" window is displayed:



Close the "Control Panel" and go to "Case B."

Case A

- 1 Set the power switch located on the bottom of the mouse to ON.
 - 2 On the "Bluetooth Devices" window, click the "Add Wireless Device" icon.
 - 3 Press the CONNECT button on the bottom of the mouse. The low battery lamp flashes green.
 - 4 In the device list, select "VGP-BMS55," and click "Next."
- Depending on the usage environment, the "Pair with a Wireless Device" window may appear. In this case, select "Pair without using a code," and click "Next."
- 5 On the "Pair with a Wireless Device" window, click "close."
 - 6 Close the "Bluetooth Devices" window.
 - 7 Try moving the mouse. If the pointer displayed on your screen moves accordingly, the connection is complete.

Case B

- 1 Set the power switch located on the bottom of the mouse to ON.
- 2 On the "Bluetooth Devices" window, select the "Devices" tab and click "Add."
The "Add Bluetooth Device Wizard" appears.
- 3 Press the CONNECT button on the bottom of the mouse. The low battery lamp flashes green.
- 4 Select the "My device is set up and ready to be found" check box and click "Next."
- 5 In the device list, select "VGP-BMS55," and click "Next."
- 6 Select "Don't use a passkey" and click "Next."
- 7 Click "Finish."
- 8 Click "OK."
- 9 Try moving the mouse. If the pointer displayed on your screen moves accordingly, the connection is complete.

Case C

- 1 Set the power switch located on the bottom of the mouse to ON.
- 2 Double-click the icon in the notification area in the bottom right corner of your personal computer's desktop.
The "Bluetooth Settings" screen appears.
- 3 Click "New Connection."
The "Add New Connection" wizard screen appears.
- 4 Press the CONNECT button on the bottom of the mouse. The low battery lamp flashes green.
- 5 Select "Express Mode", and click "Next."
The search for Bluetooth devices begins.
- 6 In the device list, select "VGP-BMS55", and click "Next."
- 7 If the "Add New Connection" wizard disappears, connection is complete. Go to step 10.
- 8 If the prompt to connect the HID (Human Interface Device) device appears, click "OK."
- 9 Verify the contents of the window displayed, and click "Next."
- 10 Try moving the mouse. If the pointer displayed on your screen moves accordingly, the connection is complete.

Disconnecting

Set the power switch of the mouse to OFF.

Operating distance of the mouse

The mouse can normally be operated within about a 32 ft. (10 m) radius around the personal computer. Depending on the usage environment, sometimes the usable distance may be notably shorter, preventing normal operation.

- In such a case, take the following measures:
- Use the mouse as far away from other wireless devices as possible.
 - Use the mouse closer to the personal computer.
 - Use a mouse pad.

Using the Mouse

When you move the mouse, the pointer displayed on your screen moves in the same direction. This section describes basic mouse operations.

- Notes**
- Due to the characteristics of the laser sensor, the mouse may not work properly on transparent surfaces or on a mouse pad that has a clear surface. Avoid using on such materials, or use a commercially available mouse pad that is compatible with a laser sensor mouse.
 - The fluoropolymer used for the soles of the mouse (PTFE, or polytetrafluoroethylene) is designed for low frictional resistance, but the mouse may slide differently depending on what material your desk or mousepad is made of.

Note
If necessary, you can adjust the mouse pointer speed under "Mouse Properties". To display "Mouse Properties", with the Windows Vista operating system, double-click "Mouse" in the "Control Panel" (with the Windows XP operating system, select "Printers and Other Hardware" in the "Control Panel", then select "Mouse").

Basic operations

See the "Name of Parts" section for the location of the buttons.

- ① **Wheel button**
Use the wheel button to easily scroll up and down in a window. You can also use auto scroll by pressing the wheel button.
- ② **Left button**
Use to open saved documents, pictures and other files and to run programs. Most mouse functions are performed using this button.
- ③ **Right button**
Use this button to display shortcut menus that allow you to copy saved documents, pictures and other files, view file details, and access various commands and settings.

Precautions

- Safety**
If any solid object or liquid falls onto the mouse, disconnect it and have it checked by qualified personnel before continuing its use.
- Location**
Do not place the mouse in a location where it is:
- On an unstable surface
 - In very humid areas or where there is no ventilation
 - Subject to excessive dust
 - Subject to direct sunlight or extreme heat
 - Extremely cold
- Operation**
If the mouse is brought directly from a cold to a warm location or is placed in a very damp room, moisture may condense on the inside of the mouse. If this occurs, the mouse may not work properly.
In this case, wait about 30 minutes for the moisture to evaporate. If the mouse does not work properly after one hour, consult your nearest Sony dealer.

Bluetooth communications

- The 2.4 GHz band used by Bluetooth and wireless LAN devices is also used by various other devices. Bluetooth devices incorporate technology that minimizes interference from other devices using the same wavelength. However, communication speed and achievable distances may be reduced. Interference from other devices can also stop communications altogether.
- The data transfer rate will vary depending on distance and obstacles between devices, device configuration, radio interference, operating system, software application, and so on. In some cases, communication may be interrupted.
- Communication range will vary according to whether walls or other obstacles are located between devices, the material used in walls, the presence of radio frequency interference and other environmental conditions, and the type of software being used.
- If wireless LAN and Bluetooth functionality are used at the same time on the same personal computer, communication speed may be reduced due to electromagnetic interference, and other unwanted effects may occur.

Cleaning the outside of the mouse

Clean the mouse with a soft, dry cloth or a soft cloth lightly moistened with a mild detergent solution. Do not use any type of abrasive pad, scouring powder, or solvent such as alcohol or benzene.

Specifications

Communication method	Bluetooth Standard Ver. 2.0+EDR
Position tracking principle	Laser sensor
Resolution	800 counts per inch
Frequency band	RF 2.4 GHz (Bluetooth)
Power requirements	3 V DC (two alkaline IEC R6 [size AA] batteries)
Transmission distance	32 ft. (10 m) max. line of sight*1
Dimensions	Approx. 2.3 x 1.4 x 4.8 in. (56.4 x 34.1 x 121.7 mm) (w x h x d)
Mass	Approx. 3.9 oz. (110 g) (including batteries)
Supported models	Sony VAIO personal computers with the Windows XP or Windows Vista operating system
Operating temperature	41°F to 95°F (5°C to 35°C) (temperature gradient less than 18°F (10°C)/hour)
Operating humidity	20% to 80% (not condensed), provided that humidity is less than 65% at 95°F (35°C) (hygrometer reading of less than 84°F (29°C))

Storage temperature	-4°F to 140°F (-20°C to 60°C) (temperature gradient less than 18°F (10°C)/hour)
Storage humidity	10% to 90% (not condensed), provided that humidity is less than 20% at 140°F (60°C) (hygrometer reading of less than 95°F (35°C))
Accessories	Alkaline IEC R6 (size AA) batteries (2) Operating Instructions (this document) (1) Warranty Card (1)

*1 Communication range will vary according to whether walls or other obstacles are located between devices, the material used in walls, the presence of radio frequency interference and other environmental conditions, and the type of software being used.

Design and specifications are subject to change without notice.

Troubleshooting

If you experience any of the following difficulties while using the mouse, use this troubleshooting guide to solve the problem. If a problem persists, consult your nearest Sony dealer.

- The mouse does not turn on when I set the power switch to ON.**
- Other mouse buttons are being pressed while the power switch is set to ON.
→ If the power switch is set to ON while other mouse buttons are being pressed, the mouse will not turn on. Be sure not to press any other buttons when setting the power switch to ON.

- Nothing happens when I press a mouse button.**
- The software is not compatible.
→ Use a supported software.
 - The mouse batteries are exhausted.
→ Replace the batteries. For details, see "Inserting Batteries into the Mouse".
 - The mouse and the personal computer are not communicating.
→ Perform the steps in "Enabling Communication between the Mouse and Your Personal Computer" to ensure that proper communication is possible.
→ Turn off the mouse, wait a few seconds, turn on the mouse, and then reestablish communication.
→ In some operating environments, the usable distance may be notably shorter, preventing normal operation. In such case, use the mouse farther away from other electronic devices such as other computers and displays.
→ If the mouse is too far from your personal computer, communication is not possible. Bring the mouse and your personal computer closer together.

- The mouse is being used on an unsuitable surface.
→ Due to the characteristics of the laser sensor, the mouse may not work properly on transparent surfaces or on a mouse pad that has a clear surface. Avoid using on such materials, or use a commercially available mouse pad that is compatible with a laser sensor mouse.
- The CONNECT button is pressed while operating the mouse.
→ When the CONNECT button is pressed while operating the mouse, the mouse goes into a standby state for about 1 minute and cannot be operated during this time. If you press the CONNECT button, reset the power switch of the mouse once to ON before beginning operation.
- The mouse may have difficulty communicating in an environment with 2.4 GHz wireless LAN or other Bluetooth communication.
→ It is best to use the mouse in a location with low interference from wireless devices.

- Pressing the CONNECT button does not establish a connection.**
- Check whether batteries are inserted in the mouse. For details, see "Inserting Batteries into the Mouse".
 - If the power switch on the mouse is set to OFF, communication with the personal computer is not possible. Check the power switch setting on the bottom of the mouse.

- If the power does not come on when the power switch is set to ON, the batteries may be exhausted. Under normal operating conditions, a set of alkaline batteries lasts about three months. Replace the batteries. For details, see "Inserting Batteries into the Mouse".

- Communication between the mouse and your personal computer may not have been properly established. If the CONNECT button on the mouse is not pressed within 30 seconds after the Bluetooth device search begins, mouse communication is canceled. In such a case, perform the procedure again to enable communication. For details, see "Enabling Communication between the Mouse and Your Personal Computer".

- If the mouse and personal computer are too far apart, communication is not possible. The maximum communication distance between the mouse and personal computer is about 32 ft. (10m). If used on a metal table or if obstacles lie between the mouse and personal computer, the usable distance may be less.
- Make sure that the Bluetooth function on your computer is activated. For details, refer to the manuals provided with your personal computer.

- The scrolling features do not work.**
- The operating system is not compatible.
→ Use a supported operating system.
 - The program you are using is not compatible with the scrolling features.
→ The scrolling features only work with programs that use a scroll function.
→ Some programs do not support the scrolling features.

- The pointer does not move when I move the mouse.**
- Processing performed by Windows or other software may temporarily disable the mouse. Wait a few moments for the processing to finish before using the mouse.

- You may find some useful solutions in your personal computer's operating instructions. Refer to the manuals provided with your personal computer.
- The mouse batteries are exhausted.
→ If the power does not come on when the power switch is set to ON, replace the batteries. For details, see "Inserting Batteries into the Mouse".

- The mouse is not set to ON.
→ Set the power switch on the bottom of the mouse to ON.
- The mouse and your personal computer are not communicating.
→ Perform the steps in "Enabling Communication between the Mouse and Your Personal Computer" to ensure that proper communication is possible.
→ In some operating environments, the usable distance may be notably shorter, preventing normal operation. In such case, use the mouse farther away from other electronic devices such as other computers and displays.
→ If the mouse is too far from your personal computer, communication is not possible. Bring the mouse and your personal computer closer together.
- The mouse is being used on an unsuitable surface.
→ Due to the characteristics of the laser sensor, the mouse may not work properly on transparent surfaces or on a mouse pad that has a clear surface. Avoid using on such materials, or use a commercially-available mouse pad that is compatible with a laser sensor mouse.

- When I am using the mouse, the display goes dark or the personal computer enters power-saving mode.**
- The personal computer enters power-saving mode even while the mouse is in use.
→ Change the power management settings for the personal computer to prevent it from entering power-saving mode. For details, refer to the manuals provided with your personal computer.
→ Touch the touchpad or press any key on the keyboard to exit power-saving mode.

- The personal computer does not return from Standby mode.**
- Touch the touchpad or press any key on the keyboard to exit this mode.
- The mouse pointer does not move smoothly across the screen.**

- Due to the characteristics of the laser sensor, the mouse may not work properly on transparent surfaces or on a mouse pad that has a clear surface. Avoid using on such materials, or use a commercially-available mouse pad that is compatible with a laser sensor mouse.

- Exiting power-saving mode with the mouse is not possible.**
- Press any key or the power button on the keyboard.

- The mouse does not move smoothly after returning from the power-saving mode.**
- Deactivate the Bluetooth connection, wait a few seconds, and then reestablish connection.

- The mouse is not found when the Bluetooth device search is performed.**
- The mouse is unable to be detected.
→ Press the CONNECT button located on the bottom of the mouse, and then try the search again.

- The power switch on the mouse is set to OFF.
→ Check the power switch setting on the bottom of the mouse.

- The Bluetooth function on your computer is not activated.
→ Make sure that the Bluetooth function is activated. For details, refer to the manuals provided with your personal computer.

- I am asked to input a key at the time of authentication.**
- Input "0000" as the key.

Free Manuals Download Website

<http://myh66.com>

<http://usermanuals.us>

<http://www.somanuals.com>

<http://www.4manuals.cc>

<http://www.manual-lib.com>

<http://www.404manual.com>

<http://www.luxmanual.com>

<http://aubethermostatmanual.com>

Golf course search by state

<http://golfingnear.com>

Email search by domain

<http://emailbydomain.com>

Auto manuals search

<http://auto.somanuals.com>

TV manuals search

<http://tv.somanuals.com>