

SONY®


Reader
Daily Edition™

Quick Start Guide

Congratulations

Your Reader Daily Edition™ comes with these useful features:

- **Unplug and unwind**

With mobile network or Wi-Fi® connection, you can download ebooks straight to your Reader™ without a computer and take your library on the go.

- **7" e-paper with clear touch screen**

All you need is a soft touch to turn pages, tap to bookmark, take notes and highlight all on a high quality screen.

- **Font Zoom**

Increase or decrease the text size to your preference, or zoom into images to take a closer look.

- **Dictionary and Wikipedia®**

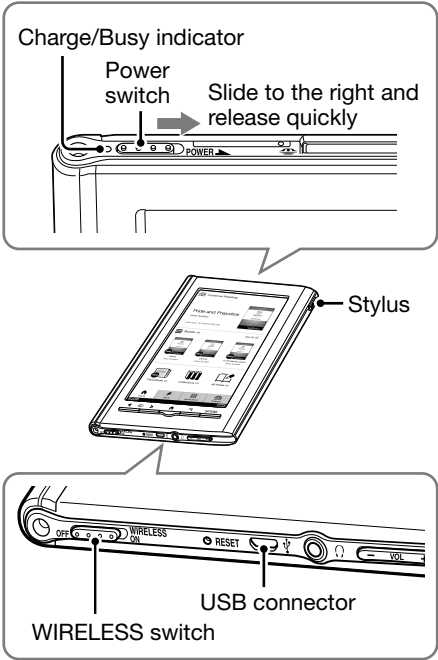
Simply double-tap a word to read its definition, translate or learn more from Wikipedia's website.

Read on. There's so much more.

- Personalize the standby screen with your favorite picture.
- Use the "Collections" feature to keep your library organized and quickly find the next great book to read.
- Never lose track of time with the clock view whenever the OPTIONS button is pressed.

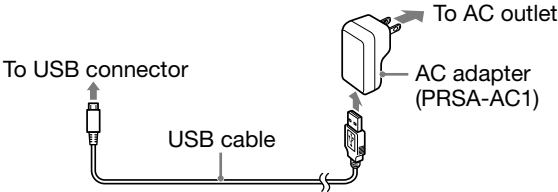
For more details, please refer to the User Guide located within your Reader device.

Meet your Reader



Ready

Before you get started, let's ensure your Reader is ready. Charge your Reader with the supplied AC adapter and then slide the POWER switch. Follow the on-screen instructions to finish the initial setup.





The Reader requires about 2 1/2 hours to fully charge (lights up red while charging), after which the charge/busy indicator goes off.

Get

The Reader™ Store from Sony is the place to go for eReading. Choose from our wide selection of eBooks including best sellers, new releases and periodicals.

Accessing Reader Store Wirelessly

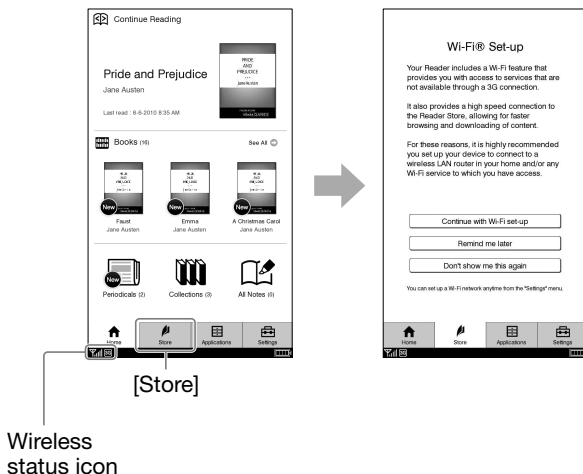
First, make sure the WIRELESS switch is set to ON. If the wireless status icon is displayed in the bottom left of the screen shows  or  (mobile network), then it is available.

To access Reader Store, tap the [Store] in the Home menu. When you first access Reader Store, the Wi-Fi setting window appears.

If you have a Wi-Fi home router or you are at a Wi-Fi hotspot area, please select “Continue with Wi-Fi set-up”.

(Please refer to the User Guide for further instruction)

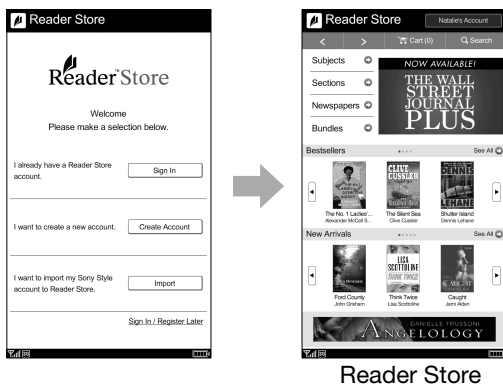
You can select “Remind me later” or “Never show me this again” if you do not have Wi-Fi access. The mobile network can also provide wireless store access, if it is available.



For further details, refer to the User Guide.

Reader™ Store registration

To purchase and download content from the Reader Store, you will need to register an account. If you already have one, simply sign in with your email address and password using the on screen keyboard. If not, it only takes a quick moment to set up. Here is what you do...




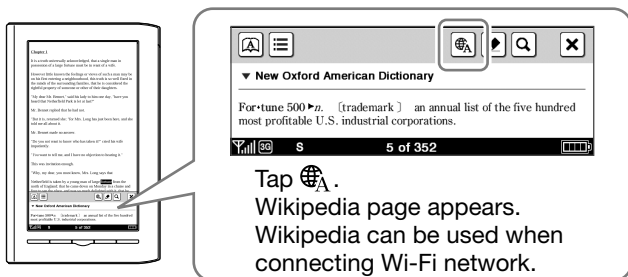
For details about the Reader Store, refer to [Help and Support] at OPTIONS menu.

Accessing Reader Store from your computer

You can also access Reader Store via Reader Library software on your computer. You can install Reader Library by launching the installer on the Reader device while it is tethered to your computer. For details, refer to the User Guide.

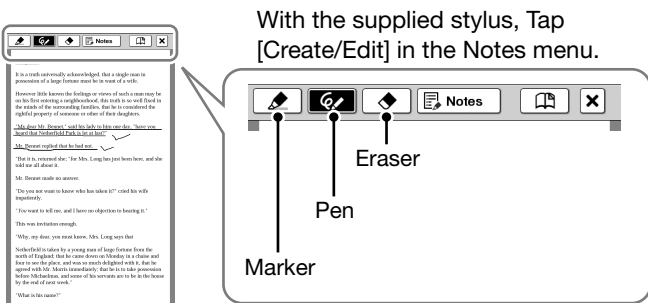
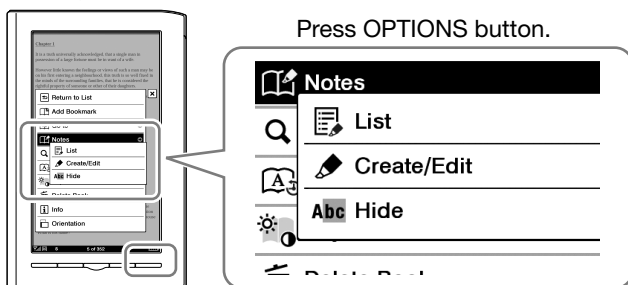
Learn

With embedded dictionaries, looking up a definition is as easy as double-tapping a word. Still curious? Tap the  (Wikipedia) icon to learn more about the word.



Take Note

Your Reader allows you to add annotations by either typing or handwriting your notes on the screen.



For information on these features and other tips, please refer to the User Guide found on your Reader.

Help

For more information about features and functions, please refer to the User Guide in the book list on your Reader.

Support:

Support web site: www.sony.com/readersupport

Contact: 1-866-962-7669

Notice for users

Before use, please read through the End User License Agreement (EULA) that is stored on the Reader.

To access the EULA, Tap on the [Settings] tab in the Home menu, and then tap [About].

Owner's Record

The model and serial numbers are located on the rear side of the Reader. Record them in the space provided below. Refer to these numbers whenever you contact your Sony dealer regarding this product.

Model No. _____

Serial No. _____

Program ©2010 Sony Corporation
Documentation ©2010 Sony Corporation



* 4 2 5 7 3 2 0 1 1 * (2)

Printed in Japan

Free Manuals Download Website

<http://myh66.com>

<http://usermanuals.us>

<http://www.somanuals.com>

<http://www.4manuals.cc>

<http://www.manual-lib.com>

<http://www.404manual.com>

<http://www.luxmanual.com>

<http://aubethermostatmanual.com>

Golf course search by state

<http://golfingnear.com>

Email search by domain

<http://emailbydomain.com>

Auto manuals search

<http://auto.somanuals.com>

TV manuals search

<http://tv.somanuals.com>