



## Operation Guide NWZ-W202

©2009 Sony Corporation Printed in Malaysia

To view the Operation Guide (PDF file)  
This Operation Guide is supplied also by PDF file. The Operation Guide (PDF file) of the following languages is supplied in the player's memory:  
English/French/German/Spanish/Italian/Russian/Chinese (Simplified)/Chinese (Traditional)/ Korean/Ukrainian/Arabic/Swedish/Finnish/Danish/Norwegian/Portuguese/Greek/Turkish/Dutch/Hungarian/Czech/Polish/Slovakian

- 1 Connect the player to the computer by using the supplied stand.
- 2 Select "start"- "My Computer"- "WALKMAN NWZ-W202"- "Storage Media"- "Operation Guide"- "XXX\_NWZ202.pdf".

\* Language name is displayed in the place of "XXX." Choose the desired language for your manual.



4-129-781-11(1)

# What is ZAPPIN Playback?



ZAPPIN enables sequential playback of song clips at a preset duration.

### Normal playback



Changes to ZAPPIN.

### ZAPPIN playback



Short recognizable clips of songs (such as the most melodic or rhythmical section) The ZAPPIN playback time for song clips can be set to either "Short" or "Long."

Returns to normal playback and restarts playback of the current song from the beginning.

### Normal playback



See "3 Playing Music" for details on operations.

# About the Compatible Software

### Windows Media Player 11

Windows Media Player can import audio data from CDs and transfer data to the player. When you use copyright protected WMA audio files, use this software. Since Windows Media Player 11 does not analyze the sound patterns of songs while transferring, ZAPPIN effectiveness will not be optimal because the most melodic or rhythmical song passages will not be recognized. Windows Media Player 11 is not included with the player. Transferable files: Music (MP3, WMA, LPCM) You can download Windows Media Player 11 from "My Computer" - "WALKMAN NWZ-W202" - "Storage Media" - "PC\_Application\_Software" - "WMP11\_Download" after connecting the player to the computer by using the supplied stand. You can also download Windows Media Player 11 from the following website.  
<http://www.microsoft.com/windows/windowsmedia/download/default.asp>  
For details on operation, refer to the Help of the software or visit the following website.  
<http://www.support.microsoft.com/>

### Content Transfer

Content Transfer can transfer music from a computer to the player by a simple drag-and-drop operation. You can use Windows Explorer or iTunes to drag and drop data to Content Transfer. If you transfer songs using Content Transfer, the most melodic and rhythmical song passages will be recognized by the 12 TONE ANALYSIS function for use with ZAPPIN playback. However, the 12 TONE ANALYSIS takes time, so transfer will be slower. You can set the 12 TONE ANALYSIS to "Automatic," "Always ON" or "OFF" before transferring. To transfer songs more quickly, set to "OFF" For details on operation, refer to the Help of the software. Transferable files: Music (MP3, WMA, AAC\*, WAV\*) \*1 DRM files are not compatible. \*2 This format file is not analyzed by the 12 TONE ANALYSIS while transferring. So, the most melodic and rhythmical section of the song will not be recognized.

### Supplied software

- Content Transfer (1)  
This software is included with the player.

### To play back the most melodic and rhythmical song clips

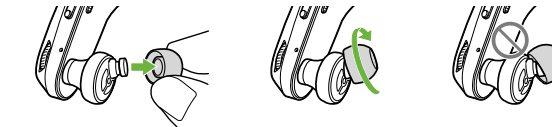
When you transfer songs using Content Transfer software with the 12 TONE ANALYSIS set to "Automatic" or "Always ON," the information of the most recognizable sections based on melody and rhythm will be found and added to each song. Then, the most melodic and rhythmical clips from each song can be played back sequentially during ZAPPIN playback. Content Transfer is included with the player. For details on how to install Content Transfer, see "Installing Content Transfer" on the reverse side.

# Checking Supplied Accessories

- This player (1)
- Stand with USB cable (1)
- Earbuds (Size S, L) (Supplied in pairs)
- Holder (1)
- Operation Guide (this manual) (1)

### How to install the earbuds

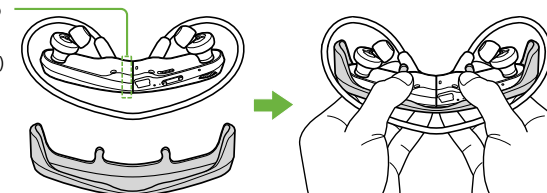
At purchase, M size earbuds are installed (L and S sizes are also supplied). To enjoy better sound quality, change the size of the earbuds or adjust the earbud position to fit in your ears comfortably and snugly. When you change the earbuds, twist while installing them firmly on the player to prevent the earbud from detaching and remaining in your ear. If an earbud becomes damaged, optional earbuds (EP-EX1) are available for purchase.



### How to store the player into the holder

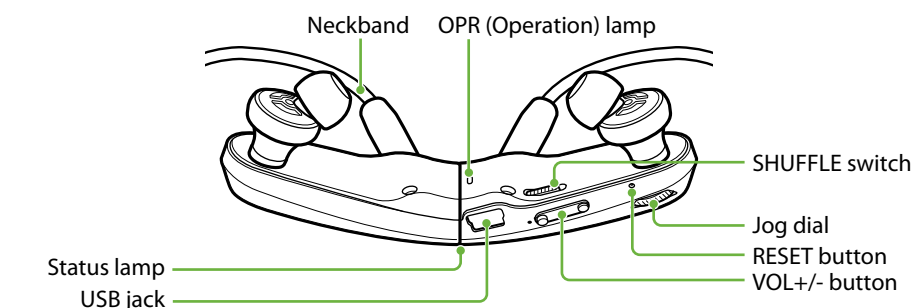
To protect the player and prevent magnetic leakage, store the player in the supplied holder whenever carrying or when not using the player.

The magnet is on the left side. Do not place credit cards or ATM cards, etc. (magnetic coded cards) near the player when it is not stored in the holder to prevent damage to the magnetic coding on the cards.



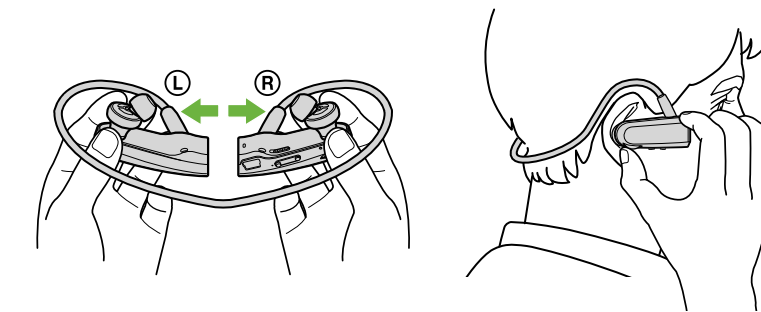
Press the player into the holder until it clicks.

# Parts and Controls



### How to place the player on your ears

- 1 Check the left (L) and right (R) parts of the player.
- 2 Separate the left and right parts. These parts are magnetically coupled.
- 3 Hang the neckband over the back of your neck and ears, and place the earbuds into your ears.



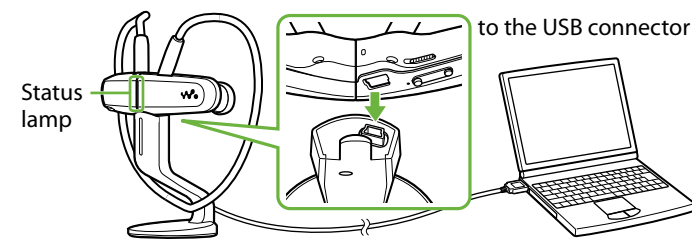
# 1 Preparing the Player

### Charging the player

Upon purchase, first, charge the player.

- 1 Connect the player to the supplied stand.
- 2 Connect the USB cable of the stand to a running computer.

When you use the player for the first time, or if you have not used the player for a long time, the player may take some minutes to start charging or to be recognized by the computer. If a screen appears presenting a choice of actions, click "Cancel."



Charging starts. The status lamp blinks slowly during charging. When charging is completed, the status lamp will stop blinking and light dimly while the player is connected to the computer. For details about charging time and the battery duration, see "Specifications" on the reverse side.

### Checking the remaining battery power

Remaining battery power is indicated in the OPR lamp. When the OPR lamp changes to red, recharge the battery.

Green\* → Red\* → Quick red blinking

When the battery is used up, the OPR lamp blinks red quickly and a long beep is heard. You cannot operate the player.

\* Blinks at about 5 second intervals.

# 2 Importing and Transferring Music

You can transfer songs to the player using Windows Media Player 11 on your computer.

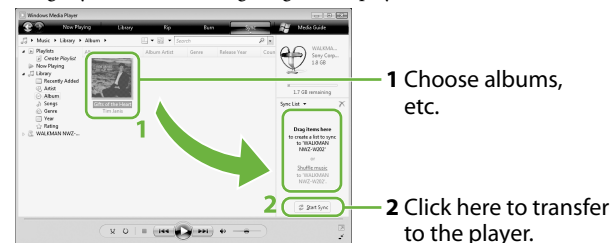
- 1 Import songs from CDs, etc., to Windows Media Player 11 on the computer.

For details on how to import songs from CDs, etc., refer to the Help of Windows Media Player 11. You do not need to re-import songs that have previously been imported to Windows Media Player 11.



- 2 Connect the player to the computer by using the stand.

- 3 Transfer songs from Windows Media Player 11 to the player. The status lamp blinks brightly while transferring songs to the player.

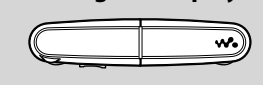


### Hints

- See also "Hints about transferring music" and "Notes about transferring music" on the reverse side.
- You can also transfer songs other than by using Windows Media Player 11. For details, see "Using Content Transfer" on the reverse side.

# 3 Playing Music

### Turning on the player



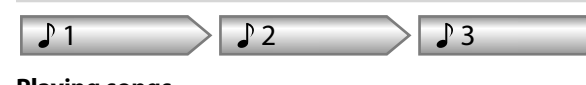
Press the jog dial to start playback.

### Turning off the player

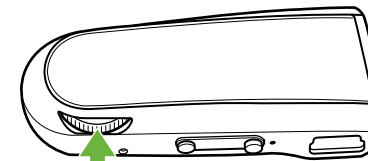


Press the jog dial to stop playback.

### Normal playback

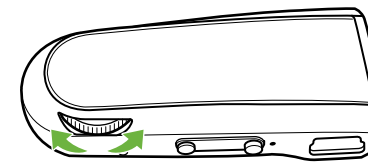


### Playing songs



Press the jog dial until it clicks.

### Skipping to the previous/next song

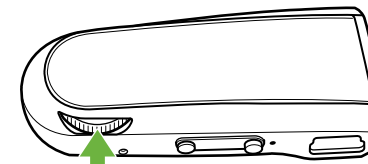


Rotate the jog dial all the way quickly to ◀ (backward) or ▶ (forward).

### Shuffle playback

Slide the SHUFFLE switch in the direction of the arrow to play back songs in random order.

### To stop playback



Press the jog dial until it clicks.

### Hints

- After you press the jog dial, the OPR lamp blinks green and red alternately and the beep is heard repeatedly until the playback starts. Please wait until the OPR lamp blinking and the beep stop.
- See also "Hints about playing music" on the reverse side.

### ZAPPIN playback



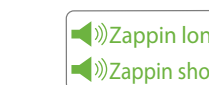
The player plays back song clips for about 4 seconds each. If the most recognizable passage of the song cannot be found, the song is played back from the 45 second point from the beginning. If the length of the song is under 45 seconds, the song is played back from some point before the end of the song.

### Skipping to the previous/next song, or shuffle playback during ZAPPIN playback

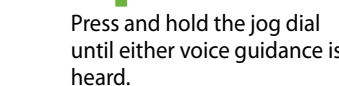
You can move to the previous/next song, or play back songs in random order. The method of operation is the same as normal playback.

### Changing the playback time of song clips in ZAPPIN playback

The playback time for song clips can be set to either "Long" or "Short."



When you press and hold the jog dial until the voice guidance of "Zappin long" is heard, the playback time of song clips changes to about 15 seconds (Long). When you press and hold the jog dial until "Zappin short" is heard during "Long" playback, the playback time of song clips returns to about 4 seconds (Short).



Press and hold the jog dial until either voice guidance is heard.

### To stop playback completely during ZAPPIN playback

Press the jog dial to return to normal playback, then press the jog dial again.

## Hints about transferring music

• For details on operating Windows Media Player 11, refer to the Help of the software or visit the following website: http://www.support.microsoft.com/

## Notes about transferring music

- When you transfer songs from Windows Media Player 11 to the player, you cannot use Content Transfer.
- You cannot operate the player during USB connection.
- Do not disconnect the USB cable while the status lamp blinks brightly. Otherwise, data being transferred or stored on the player may be damaged.

• If you transfer songs using Windows Media Player 11, the songs will not be analyzed by 12 TONE ANALYSIS. The 12 TONE ANALYSIS function is loaded with Content Transfer, which can analyze the sound patterns of songs.
• You cannot delete the transferred songs on the player directly. When you delete songs from the player, use the software you used to transfer the songs, or Windows Explorer.

## Hints about playing music

- When playback of the last song is finished, the player automatically restarts playback from the first song and continues in sequential order.
- The playback time of the song clips is set to "Zappin short" by default. You can change the setting to "Zappin long."
- If you turn off the player by uniting the left and right parts during ZAPPIN playback, the player starts ZAPPIN playback the next time that you turn on and start playback.
- Songs stored on the player are played back in the order of the file or folder names (in numerical or alphabetical order). Also, in the overall hierarchy of all files and folders, songs belonging to each folder are played back in their hierarchical order. If you rename the files or folders on the player, the playback order of the songs can be changed. However, the renamed files or folders on the player are recognized as different from those of the original name, so the files or folders of the original name are transferred to the player again.

# On other operations

## Adjusting the volume

Adjust the volume with the VOL+/- button. The volume can be adjusted in 31 steps: from 0 to 30. "15" is set by default. If you turn off the player or stop playback with the volume set to "0", the volume will be automatically set to "1" when you start playback next time.

## Limiting the volume (AVLS (volume limit))

If you set AVLS (Automatic Volume Limiter System) to on, you can limit the maximum volume to prevent auditory disturbance or distraction, and listen to music at a comfortable volume level.

AVLS is set to off by default.

**1** Unite the left and right parts to turn off the player.

**2** Separate the left and right parts.

**3** Press and hold the jog dial for about 5 seconds while pressing the VOL+ button, until the status lamp lights.

The status lamp turns off when you release the jog dial and the VOL+ button. The OPR lamp blinks green 2 times and AVLS is set to on. The volume is kept to a moderate level.

To return the setting of AVLS to off, repeat steps 1 to 3. When AVLS is set to off, the OPR lamp blinks red 2 times in step 3.

## Installing Content Transfer

Content Transfer can transfer songs from the computer to the player. You can use iTunes or Windows Explorer by dragging and dropping songs to Content Transfer. Before transferring songs using iTunes or Windows Explorer, install Content Transfer to the computer as follows:

**1** Connect the player to the computer by using the stand.

**2** Select "start" - "My Computer" - "WALKMAN NWZ-W202" - "Storage Media," and then copy the "PC\_Application\_Software" folder to the computer.

**3** Double-click "ContentTransferInstaller.exe" in the "PC\_Application\_Software" folder. The install wizard of Content Transfer starts. Install Content Transfer to the computer by following the on-screen instructions.

## Using Content Transfer

You can transfer songs using iTunes or Windows Explorer by dragging and dropping to Content Transfer.

### Notes

- Content Transfer cannot transfer DRM songs to the player.
- You cannot delete the transferred songs on the player directly. When you delete songs from the player, use Content Transfer.

**Transferring songs from iTunes through Content Transfer**

Drag and drop the songs that you want to transfer to Content Transfer. For details on the operation of iTunes, refer to the Help of the software.

### Note

- For details on restrictions on transferring songs from iTunes, visit the support web sites (☞ "Customer support web sites").

**Transferring songs using Windows Explorer**

There are 2 ways to transfer songs using Windows Explorer as follows:

- Drag and drop songs that you want to transfer to Content Transfer.
- Drag and drop songs directly to "My Computer" - "WALKMAN NWZ-W202" - "Storage Media."

### Notes

- The songs transferred directly by dragging and dropping to the player are not analyzed through 12 TONE ANALYSIS.
- The folders up to the 8th level under "Storage Media" can be recognized.

## Formatting the player

If you format the player, all data will be erased and all settings will be returned to the default status.

### Notes

- Formatting is only available when the player does not playback.
- If the OPR lamp lights red due to low remaining battery power, the player cannot be formatted.
- All data stored on the player will be erased.
- The Content Transfer software included with the player will also be deleted. If necessary, download Content Transfer from the customer support web site.

**1** Unite the left and right parts to turn off the player.

**2** Separate the left and right parts.

**3** Press and hold the jog dial for about 15 seconds until the status lamp blinks quickly.

Release the jog dial. The OPR lamp lights red.

**4** Rotate the jog dial within 30 seconds after the OPR lamp lights red.

The status lamp turns off. The OPR lamp lights alternately green and red each time you rotate the jog dial.

**5** Press the jog dial while the OPR lamp lights green.

The OPR lamp blinks green quickly and formatting is executed. When the OPR lamp turns off, formatting is complete. If you press the jog dial while the OPR lamp lights red, or if 30 seconds have passed, formatting will be canceled.

## Upgrading the player’s firmware

You can update the player’s firmware, allowing you to add new features to the player. For details about the latest firmware information and how to install it, visit the customer support web site.

**1** Download the update program to the computer from the web site.

**2** Connect the player to the computer by using the stand, and then start up the update program.

**3** Follow the on-screen instructions to update the player’s firmware.

**Displaying the player information**

Before updating the firmware, check the player’s information, such as the model name, etc. To check the information, connect the player to the computer by using the stand, and open “information.txt” in “My Computer” - “WALKMAN NWZ-W202.”

## Registering your product

To facilitate customer support, such as the player’s firmware upgrade service, please register your product.\*1 Open the folder of your country/region’s name in: “My Computer” - “WALKMAN NWZ-W202” - “Storage Media” - “Support” folder, then double-click “Customer\_Registration\_XX.” \*2

\*1 The serial number provided for this player is required for your product registration. The number is shown on the rear of the player.

\*2 Name of country/region is displayed in the place of “XX.”

# Troubleshooting

If the player does not function as expected, try the following steps to resolve the issue.

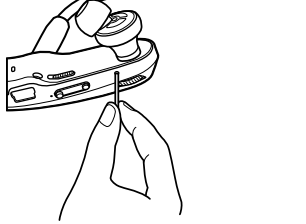
**1** Find the symptoms of the issue in “Symptoms and remedies,” and try any corrective actions listed.

**2** Connect the player to the computer by using the stand to charge the battery.

You may be able to resolve some issues by charging the battery.

**3** Press the RESET button with a small pin, etc., only when playback is stopped.

If you press the RESET button while operating the player, stored data and settings on the player may be deleted.



**4** Look for information about the issue on the support web sites

(☞“Customer support web sites”).

**5** If the approaches listed above fail to resolve the issue, consult your nearest Sony dealer.

## Symptoms and remedies

**The player cannot charge the battery.**

- The player is not connected to the supplied stand properly.
  - Disconnect the USB connection, and then reconnect it.
- The battery is charged in an ambient temperature out of the range of 5 °C (41 °F) to 35 °C (95 °F).
  - Charge the battery in an ambient temperature of 5 °C (41 °F) to 35 °C (95 °F).
- The computer is not on.
  - Turn on the computer.
- The computer has entered sleep or hibernation status.
  - Release the computer from sleep or hibernation status.
- If the symptom that you encountered does not apply to those listed above, press the RESET button, and then reconnect the USB connection.

**Charging completes very quickly.**

- If the battery is already almost fully charged when charging begins, little time is needed to reach full charge.

**The player does not turn on.**

- The left and right parts of the player are united.
  - Separate them and press the jog dial.
- The remaining battery power is insufficient.
  - Charge the battery by connecting the player to the computer (☞ “Charging the player” on the front side).

**The player takes a long time to start.**

- It may take time to start if many files or folders are stored. While starting, the player makes the startup sound.

**The OPR lamp blinks red, a long beep is heard, and the player does not turn on.**

- Remaining battery is low.
  - Recharge the battery (☞ “Charging the player” on the front side).

**The OPR lamp lights red, a short double-beep is heard repeatedly, and the player does not turn on.**

- Formatting the player failed to complete, or you formatted the player on the computer.
  - Retry formatting the player (☞ “Formatting the player”).

**Battery life is short.**

- The operating temperature is below 5 °C (41 °F).
  - Battery life becomes shorter due to the battery characteristics. This is not a malfunction.
- Battery charging time is not sufficient.
  - Charge the battery until the status lamp lights. The status lamp blinks slowly during charging.
- You have not used the player for a prolonged period.
  - The efficiency of the battery will be improved by repeatedly charging and discharging it.
- When usable battery life becomes half the usual time, even after charging the battery fully, the battery should be replaced.
  - Consult your nearest Sony dealer.

**Songs cannot be transferred to the player.**

- The player is not connected to the supplied stand properly.
  - Disconnect the USB connection, and then reconnect it.
- There is not enough free space in the built-in flash memory.
  - Transfer any unnecessary data back to the computer to increase free space.
  - The maximum number of songs that can be transferred to the player is 2,000.
- You cannot transfer files with formats not playable on the player.
  - Transfer files in a playable format (☞ “Supported file format”).
- Songs with a limited playing period or playing count may not be transferred due to restrictions set by copyright holders. For details on the settings of each audio file, contact the distributor.

**No data is played.**

- The player is connected to the computer via USB connection.
  - You cannot operate the player while it is connected to the computer.

**Songs are played back in a different order from the playlist.**

- Transferred songs of the playlist are played back in the order according to the player’s rule, not in the song order of the playlist (☞ “Hints about playing music”).

**The OPR lamp lights red, a short double-beep is heard repeatedly, and no data is played.**

- There is no song that can be played on the player.
  - Transfer data to the player.
- You are trying to play an unsupported format or DRM file.
  - Transfer files in a playable format (☞ “Supported file format”). If files that cannot be played are unnecessary, delete them from the player.

**There is no sound.**

- The volume level is set to zero.
  - Turn the volume up.

**The volume is not loud enough.**

- AVLS is set to on.
  - Change the setting of AVLS to off (☞ “Limiting the volume (AVLS (volume limit))”).

**The OPR lamp lights red while playing back and the voice guidance of “EXPIRED” is heard.**

- The playback limitation period of the song has expired, or the playback limitation count has been reached, based on subscription conditions, etc.
  - Visit the distributor’s website from which you purchased the song, and update it.
  - If the song is unnecessary, delete it from the player.

**The most melodic and rhythmical clip of a song is not played back in ZAPPIN playback.**

- The song was not analyzed by the 12 TONE ANALYSIS.
  - Transfer songs using Content Transfer which will analyze songs by 12 TONE ANALYSIS.
  - Check that 12 TONE ANALYSIS is set to “Automatic” or “Always ON.”

# Precautions

The following FCC statement applies only to the version of this model manufactured for sale in the USA. Other versions may not comply with FCC technical regulations.

**NOTE:**

This equipment has been tested and found to comply with the limits for a Class B digital device, pursuant to Part 15 of the FCC Rules. These limits are designed to provide reasonable protection against harmful interference in a residential installation. This equipment generates, uses and can radiate radio frequency energy and, if not installed and used in accordance with the instructions, may cause harmful interference to radio communications. However, there is no guarantee that interference will not occur in a particular installation. If this equipment does cause harmful interference to radio or television reception, which can be determined by turning the equipment off and on, the user is encouraged to try to correct the interference by one or more of the following measures:

- Reorient or relocate the receiving antenna.
- Increase the separation between the equipment and receiver.
- Connect the equipment into an outlet on a circuit different from that to which the receiver is connected.
- Consult the dealer or an experienced radio/TV technician for help.

You are cautioned that any changes or modifications not expressly approved in this manual could void your authority to operate this equipment.

**If you have any questions about this product:**

**Visit:** www.sony.com/walkmansupport
**Contact:** Sony Customer Information Service Center at 1-(866)-456-7669

**Write:** Sony Customer Information Service Center 12451 Gateway Blvd., Fort Myers, FL 33913

Download from Www.Somanuals.com. All Manuals Search And Download.

<b>Declaration of Conformity</b>
Trade Name: SONY
Model No.: NWZ-W202
Responsible Party: Sony Electronics Inc. <p>Address: 16530 Via Esprillo, San Diego, CA 92127 U.S.A.</p>
Telephone Number: 858-942-2230
This device complies with Part 15 of the FCC Rules. Operation is subject to the following two conditions: (1) this device may not cause harmful interference, and (2) this device must accept any interference received, including interference that may cause undesired operation.

**Owner’s Record**

The model and serial numbers are located on the back of the player. Record them in the space provided below. Refer to these numbers in the spaces whenever you call upon your Sony dealer regarding this product.

Model No. \_\_\_\_\_

Serial No. \_\_\_\_\_

**Notice for customers: the following information is only applicable to equipment sold in countries applying EU directives**

The manufacturer of this product is Sony Corporation, 1-7-1 Konan, Minato-ku, Tokyo, Japan. The Authorized Representative for EMC and product safety is Sony Deustschland GmbH, Hedelfinger Strasse 61, 70327 Stuttgart, Germany. For any service or guarantee matters please refer to the addresses given in separate service or guarantee documents.

At high volume, prolonged listening to the personal audio player can damage the user’s hearing.



## Information for safety

**On charging the battery**

- Do not leave the player connected for extended periods to a laptop computer that is not connected to AC power, because the player may discharge the computer’s battery.
- Charging time may vary, depending on the conditions under which you use the battery.
- If you do not intend to use the player for over half a year, charge the battery at least once per 6 to 12 months for the battery maintenance.

**On safety**

- Be sure not to short-circuit the terminals of the player with other metallic objects.
- Do not touch the rechargeable battery with bare hands if it is leaking. Since battery liquid may remain in the player, consult your nearest Sony dealer if the battery has leaked. If the liquid gets into your eyes, do not rub your eyes as it may lead to blindness. Wash out your eyes with clean water, and consult a doctor.
- Also, if the liquid gets on to your body or clothes, wash it off immediately. If you do not, it may cause burns or injury. If you get burned or injured by the liquid from the battery, consult a doctor.
- Do not pour water or put any foreign object in the player. Doing so may cause fire or electric shock.
- If this occurs, turn off the player immediately, and consult your nearest Sony dealer or Sony Service Center.
- Do not put the player into fire.
- Do not take apart or remodel the player. Doing so can result in electric shock. Consult your nearest Sony dealer or Sony Service Center for exchange of rechargeable batteries, internal checks or repair.

**On installation**

- Do not put any heavy object on top of the player or apply a strong shock to the player. It may cause a malfunction or damage.

- Never use the player where it will be subjected to extremes of light, temperature, moisture or vibration. The player may become discolored, distorted or damaged.

- Never leave the player exposed to high temperature, such as in a car parked in the sun or under direct sunlight.

- Do not leave the player in a place subject to excessive dust.

- Do not leave the player on an unstable surface or in an inclined position.

- If the player causes interference to radio or television reception, turn the player off and move it away from the radio or television.

- Do not expose the player to water. The player is not waterproof. Remember to follow the precautions below.

- Be careful not to drop the player into a sink or other container filled with water.

- Do not use the player in humid locations or bad weather, such as in the rain or snow.

- Do not get the player wet.

- If you touch the player with wet hands, or put the player in a damp article of clothing, the player may get wet and this may cause a malfunction of the player.

- If you want to separate the left and right parts of the player, make sure to hold them each.

Pulling the neckband may cause damage to the neckband.

- The earbuds may deteriorate due to long-term storage or use.

- When keeping the player stored on the supplied stand, put the stand on a flat place, and avoid shock.

- Do not put any cards such as cash cards or credit cards with magnetic coding near the player whenever the player is not stored in the supplied holder. Otherwise, your cards may become impaired due to the player’s magnetic effect.

**Note on static electricity**

In particularly dry air conditions, mild tingling may be felt on your ears. This is a result of static electricity accumulated in the body, and not a malfunction of the player. The effect can be minimized by wearing clothes made from natural materials.

**On heat build-up**

- Heat may build up in the player while charging if it is used for an extended period of time.

**On safe listening**

Do not use the player while operating a motorized vehicle; it may create a traffic hazard and is illegal in many areas.

**Road safety**

- Avoid listening to the player in situations where hearing must not be impaired.

**Preventing hearing damage**

- Avoid using the player at a high volume. Hearing experts advise against continuous, loud and extended play. If you experience a ringing in your ears, reduce the volume or discontinue use. Do not turn the volume up high all at once. Turn up the volume gradually so that loud sound will not hurt your ears.

**Caring for others**

- Keep the volume at a moderate level. This will allow you to hear outside sounds and to be considerate to the people around you.

**Warning**

- If there is lightning when you are using the player, take off the player immediately. If you experience an allergic reaction to the player, stop using them at once and contact a doctor.

**On the use**

- Do not use this player while driving, cycling, or operating any motorized vehicle. You should exercise extreme caution or discontinue use in potentially hazardous situations.
- Refrain from using the player according to the in-flight announcements during take off or landing in an aircraft.
- Note that condensation may form temporarily in cases such as when the player is moved quickly from a low-temperature environment to a high temperature environment or used in a room that has a heater just turned on. Condensation creates a phenomenon where moisture in the air adheres to surfaces such as metal panels, etc., and then changes to liquid. If condensation forms in the player, leave it turned off until the condensation disappears. If you use the player with condensation present, a malfunction may result.

**On cleaning**

- Clean the player’s case with a soft cloth, such as a cleaning cloth for eyeglasses.
- If the player’s case becomes very dirty, clean it with a soft cloth slightly moistened with water or a mild detergent solution.

- Do not use any type of abrasive pad, scouring powder, or solvent, such as alcohol or benzene, as it may mar the finish of the case.

- Be careful not to let water get into the player from the opening near the connector.

- To clean the earbuds, remove them from the player, and hand wash with a mild detergent solution. Dry off sufficiently before use after washing.

**Important notice**

- Copyright laws prohibit reproducing the software or the manual accompanying it in whole or in part, or renting the software without the permission of the copyright holder.

- In no event will SONY be liable for any financial damage, or loss of profits, including claims made by third parties, arising out of the use of the software supplied with this player.

- In the event a problem occurs with this software as a result of defective manufacturing, SONY will replace it. However, SONY bears no other responsibility.

- The software provided with this player cannot be used with equipment other than that to which it is so designated.

- Please note that, due to continued efforts to improve quality, the software specifications may be changed without notice.

- Operation of this player with software other than that provided is not covered by the warranty.
- The ability to display the languages on supplied software will depend on the installed OS on your computer. For better results, please ensure that the installed OS is compatible with the desired language you want to display.

- We do not guarantee all the languages will be able to be displayed properly on the supplied software.

- User-created characters and some special characters may not be displayed.

- The explanations in this manual assume that you are familiar with the basic operations of Windows.

For details on the use of your computer and operating system, please refer to the respective manuals.

- The recorded song is limited to private use only. Use of the song beyond this limit requires permission of the copyright holders.

- Sony is not responsible for incomplete recording/download or damaged data due to problems of the player or computer.

### About sample data\*1

The player is pre-installed with sample data. If you delete the sample data, you cannot restore it, and we will not supply any replacement data.

- \*1 In some countries/regions some sample data is not installed.

# Specifications

## Free Manuals Download Website

<http://myh66.com>

<http://usermanuals.us>

<http://www.somanuals.com>

<http://www.4manuals.cc>

<http://www.manual-lib.com>

<http://www.404manual.com>

<http://www.luxmanual.com>

<http://aubethermostatmanual.com>

Golf course search by state

<http://golfingnear.com>

Email search by domain

<http://emailbydomain.com>

Auto manuals search

<http://auto.somanuals.com>

TV manuals search

<http://tv.somanuals.com>