

Network Camera

User's Guide

Software Version 1.0

SNC-CS3N/CS3P

Owner's Record

The model and serial numbers are located on the top. Record these numbers in the spaces provided below. Refer to these numbers whenever you call upon your Sony dealer regarding this product.

Model No. _____
Serial No. _____

WARNING

To prevent fire or shock hazard, do not expose the unit to rain or moisture.

To avoid electrical shock, do not open the cabinet. Refer servicing to qualified personnel only.

Power Supply

Caution for U.S.A. and Canada

The SNC-CS3N operates on 24V AC or 12V DC. The SNC-CS3N automatically detects the power. Use a Class 2 power supply which is UL Listed (in the U.S.A.) or CSA-certified (in Canada).

Caution for other countries

The SNC-CS3P operates on 24V AC or 12V DC. The SNC-CS3P automatically detects the power. Use a power supply which complies with the safety regulation of the country where the unit is used.

For customers in the U.S.A. (SNC-CS3N only)

This equipment has been tested and found to comply with the limits for a Class B digital device, pursuant to Part 15 of the FCC Rules. These limits are designed to provide reasonable protection against harmful interference in a residential installation. This equipment generates, uses, and can radiate radio frequency energy and, if not installed and used in accordance with the instructions, may cause harmful interference to radio communications. However, there is no guarantee that interference will not occur in a particular installation. If this equipment does cause harmful interference to radio or television reception, which can be determined by turning the equipment off and on, the user is encouraged to try to correct the interference by one or more of the following measures:

- Reorient or relocate the receiving antenna.
- Increase the separation between the equipment and receiver.
- Connect the equipment into an outlet on a circuit different from that to which the receiver is connected.
- Consult the dealer or an experienced radio/TV technician for help.

You are cautioned that any changes or modifications not expressly approved in this manual could void your authority to operate this equipment.

The shielded interface cable recommended in this manual must be used with this equipment in order to comply with the limits for a digital device pursuant to Subpart B of Part 15 of FCC Rules.

If you have any questions about this product, you may call:

**Sony's Business Information Center (BIC) at
1-800-686-7669**

or Write to: **Sony Customer Information Services
Center**

**6900-29, Daniels Parkway, PMB 330
Fort Myers, Florida 33912**

Declaration of Conformity

Trade Name: SONY
Model No: SNC-CS3N
Responsible Party: Sony Electronics Inc.
Address: 680 Kinderkamack Road, Oradell,
NJ 07649 USA
Telephone No: 201-930-6972

This device complies with Part 15 of the FCC Rules. Operation is subject to the following two conditions: (1) This device may not cause harmful interference, and (2) this device must accept any interference received, including interference that may cause undesired operation.

Voor de klanten in Nederland

- Dit apparaat bevat een vast ingebouwde batterij die niet vervangen hoeft te worden tijdens de levensduur van het apparaat.
- Raadpleeg uw leverancier indien de batterij toch vervangen moet worden. De batterij mag alleen vervangen worden door vakbekwaam servicepersoneel.
- Gooi de batterij niet weg maar lever deze in als klein chemisch afval (KCA).
- Lever het apparaat aan het einde van de levensduur in voor recycling, de batterij zal dan op correcte wijze verwerkt worden.



For customers in Taiwan only



廢電池請回收
僅適用於台灣

NOTICE TO USERS

© 2003 Sony Corporation. All rights reserved. This manual or the software described herein, in whole or in part, may not be reproduced, translated or reduced to any machine readable form without prior written approval from Sony Corporation.

SONY CORPORATION PROVIDES NO WARRANTY WITH REGARD TO THIS MANUAL, THE SOFTWARE OR OTHER INFORMATION CONTAINED HEREIN AND HEREBY EXPRESSLY DISCLAIMS ANY IMPLIED WARRANTIES OF MERCHANTABILITY OR FITNESS FOR ANY PARTICULAR PURPOSE WITH REGARD TO THIS MANUAL, THE SOFTWARE OR SUCH OTHER INFORMATION. IN NO EVENT SHALL SONY CORPORATION BE LIABLE FOR ANY INCIDENTAL, CONSEQUENTIAL OR SPECIAL DAMAGES, WHETHER BASED ON TORT, CONTRACT, OR OTHERWISE, ARISING OUT OF OR IN CONNECTION WITH THIS MANUAL, THE SOFTWARE OR OTHER INFORMATION CONTAINED HEREIN OR THE USE THEREOF.

Sony Corporation reserves the right to make any modification to this manual or the information contained herein at any time without notice.

The software described herein may also be governed by the terms of a separate user license agreement.

Exwave HAD™ is a trademark of Sony Corporation. Microsoft, Windows, Internet Explorer and MS-DOS are registered trademarks of Microsoft Corporation in the United States and/or other countries.

Java is a trademark of Sun Microsystems, Inc. in the United States and other countries.

Intel and Pentium are registered trademarks of Intel Corporation or its subsidiaries in the United States and other countries.

Jeode is a registered trademark or trademark of Insignia Solutions, Inc. in the United States and other countries.

All other company and product names are trademarks or registered trademarks of the respective companies or their respective makers.

Table of Contents

Overview

| | |
|------------------------------------|---|
| Features | 6 |
| How to Use This User's Guide | 7 |
| Precautions | 7 |
| Operating Precautions | 7 |

Operating the Camera

| | |
|---|-----------|
| Logging in to Homepage — Welcome Page | 8 |
| Logging in as a User | 8 |
| Logging in as Administrator | 8 |
| About Viewers | 9 |
| Configuration of Main Viewer Page | 10 |
| Menu Section | 10 |
| Image Control Section | 10 |
| Monitor Image Section | 11 |
| Controlling the Monitor Image | 11 |
| Controlling the Application Manually | 12 |
| Sending a Still Image File to an FTP Server | 12 |
| Sending a Still Image via E-mail | 12 |
| Recording a Still Image on the Built-in Memory of the Camera | 12 |
| Controlling Alarm Output | 12 |
| Capturing a Monitor Image | 13 |

Operating the Camera Using a Pocket PC

| | |
|--|-----------|
| Logging in to Homepage — Welcome Page | 14 |
| Configuration of Main Viewer Page | 15 |
| Monitor Image Section | 15 |
| Image Control Section | 15 |

Administering the Camera

| | |
|---|-----------|
| Configuration of Administrator Menu Page | 16 |
| Configuring the System | |
| — System setting Page | 17 |
| System setting Section | 17 |
| Date time setting Section | 18 |
| Initialization Section | 19 |
| Setting the Camera | |
| — Camera setting Page | 20 |
| Camera setting Section | 20 |
| Configuring the Network | |
| — Network setting Page | 22 |
| Wired LAN setting Section | 22 |
| HTTP port setting Section | 23 |
| Notifying the IP Address | |

| | |
|---|-----------|
| — Dynamic IP address notification Section ... | 23 |
| Setting the User | |
| — User setting Page | 25 |
| Setting the Security | |
| — Security setting Page | 26 |
| Activating/Deactivating the Security Function | |
| — Security usage setting Page | 26 |
| Setting the Security Function | |
| — Securing setting Page | 26 |
| Sending Images to FTP Server | |
| — FTP client setting Page | 27 |
| Activating/Deactivating the FTP Client Function | |
| — FTP client usage setting Page | 27 |
| Setting the FTP Client Function | |
| — FTP client setting Page | 27 |
| Alarm mode setting Section | 28 |
| Periodical sending mode setting Section | 28 |
| Operating the Digest Viewer | 29 |
| Downloading Images from the Camera | |
| — FTP server setting Page | 30 |
| Activating/Deactivating the FTP Server Function | |
| — FTP server usage setting Page | 30 |
| Setting the FTP Server Function | |
| — FTP server setting Page | 31 |
| Sending an Image via E-mail | |
| — SMTP setting Page | 31 |
| Activating/Deactivating the SMTP Function | |
| — SMTP usage setting Page | 31 |
| Setting the SMTP Function | |
| — SMTP setting Page | 31 |
| Alarm mode setting Section | 32 |
| Periodical sending mode setting Section | 33 |
| Setting the Alarm Out 1 or 2 | |
| — Alarm out 1 or 2 setting Page | 33 |
| Activating/Deactivating the Alarm Out 1 Function | |
| — Alarm out 1 usage setting Page | 33 |
| Setting the Alarm Out 1 Function | |
| — Alarm out 1 setting Page | 33 |
| Alarm mode setting Section | 34 |
| Timer mode setting Section | 34 |
| Recording Images in Memory | |
| — Image memory setting Page | 35 |
| Activating/Deactivating the Image Memory Function | |
| — Image memory usage setting Page | 35 |
| Recording an Image in the Memory — Image memory setting Page | 35 |
| Alarm mode setting Section | 36 |
| Periodical recording mode setting Section | 37 |
| Directory Structure of Image Memory | 37 |
| Setting the Alarm Buffer | |
| — Alarm buffer setting Page | 38 |
| Communicating Data via Serial Port | |
| — Serial setting Page | 38 |
| Setting the Schedule | |
| — Schedule setting Page | 39 |

| | |
|--|-----------|
| Setting the Activity Detection Function | |
| — Activity detection setting Page | 40 |
| Setting the Activity Detection Area | 40 |
| Showing the Pop-up | |
| — Pop-up setting Page | 41 |

Others

| | |
|--|-----------|
| Using the Supplied Setup Program | 42 |
| Assigning the IP Address Using the Setup Program | 42 |
| Changing the Communication Bandwidth | 44 |
| Setting the Date and Time | 44 |
| Rebooting the Camera | 45 |
| Assigning the IP Address to the Camera Using ARP Commands | 45 |
| Using the SNMP | 46 |
| 1. Inquiry Commands | 46 |
| 2. Setting Commands | 46 |
| Storing an HTML File in the Built-in Flash Memory | 48 |
| Index | 50 |

- The Network Camera system and related service is not a security service. When monitoring the image and audio of the purchased Network Camera, there is a risk that the monitoring image or audio may be viewed or used by a third-party via the network. It is provided only as a convenience for people to easily access their cameras via the internet.

When you use the Network Camera, please take into account and ensure the privacy and portrait right of the object at your own responsibility.

- Access to the camera or system is limited to the user setting up a user name and password only. No further authentication is provided nor should the user presume that such filtering is done by the service.
- Sony assumes no liability should the service related to the Network Camera goes down or interrupted for whatever reason.

Overview

Features

High-quality monitoring via the network

You can monitor a high-quality live image from the camera using the Web browser on the computer connected to the 10BASE-T or 100BASE-TX network. The maximum frame rate is 30 FPS for the SNC-CS3N and 25 FPS for the SNC-CS3P.

Up to 50 users can view the image from one camera at the same time.

Available Web browsers

Microsoft Internet Explorer Ver. 5.5 or 6.0
(Available OS: Windows 98/ 98SE/ Me/ NT4.0/ 2000/ XP)

High-sensitivity and superior picture quality

The 1/3 type Exwave HAD™ CCD offers superior picture quality – high horizontal resolution, high sensitivity, an excellent signal-to-noise and a low smear level.

Image recording on the built-in memory

You can record still images from the camera onto the camera's built-in memory (about 8 MB). You can record a still image at the moment when a trigger by the external sensor input, built-in activity detection function

or manual trigger button occurs, or still images sequentially for a determined period before and after the trigger. Periodic recording of still images is also possible.

Image transmission using an E-mail or FTP server

You can send a still image from the camera as an attachment of an E-mail or to an FTP server, at the moment when a trigger by the external sensor input, built-in activity detection function or manual trigger button occurs. You can also send still images sequentially for a determined period before and after the trigger to an FTP server, or send them periodically.

If you use the FTP client software of the computer, you can also search for and receive the still image recorded in the built-in memory.

Alarm output

The camera is equipped with two sets of alarm outputs. You can use them to control peripheral devices by synchronizing with the external sensor inputs, built-in activity detection function, manual trigger button, or timer.

Transparency-type RS-232C interface

If you connect peripheral devices to the camera via the RS-232C interface, you can control the devices from the computer via the network and receive data from these devices.

Analog video output

The analog video output allows connecting a VTR or TV monitor for local image recording and monitoring.

- Exwave HAD™: Exwave Hole-Accumulated Diode
- CCD: Charge-Coupled Device

How to Use This User's Guide

This User's Guide explains how to operate the SNC-CS3N/CS3P Network Camera from a computer. The User's Guide is written to be read on the computer display. As this section gives tips on using the User's Guide, read it before you operate the camera.

Jumping to the related page

When you read the User's Guide on the computer display, click on the sentence to jump to the related page.

Software display examples

Note that the displays shown in the User's Guide are explanatory examples. Some displays may be different from the ones which appear as you operate the application software.

Printing the User's Guide

Depending on your system, certain displays or illustrations in the User's Guide, when printed out, may differ from those as portrayed on your screen.

Installation Manual (printed matter)

The supplied Installation Manual describes the names and functions of parts and controls of the Network Camera, connecting examples and how to set up the camera. Be sure to read the Installation Manual before operating.

Regular parts replacement

Some of the parts that make up this product (electrolytic condenser, for example) need replacing regularly depending on their life expectancies. The lives of parts differ according to the environment or condition in which this product is used and the length of time it is used, so we recommend regular checks. Consult the dealer from whom you bought it for details.

Precautions

This Sony product has been designed with safety in mind. However, if not used properly electrical products can cause fires which may lead to serious body injury. To avoid such accidents, be sure to heed the following.

Heed the safety precautions

Be sure to follow the general safety precautions and the "Operating Precautions."

In case of a breakdown

In case of system breakdown, discontinue use and contact your authorized Sony dealer.

In case of abnormal operation

- If the unit emits smoke or an unusual smell,
- If water or other foreign objects enter the cabinet, or
- If you drop the unit or damage the cabinet:

- 1 Disconnect the camera cable and the connecting cables.
- 2 Contact your authorized Sony dealer or the store where you purchased the product.

Operating Precautions

Operating or storage location

Avoid operating or storing the camera in the following locations:

- Extremely hot or cold places (Operating temperature: -10°C to $+50^{\circ}\text{C}$ [14°F to 122°F])
- Exposed to direct sunlight for a long time, or close to heating equipment (e.g., near heaters)
- Close to sources of strong magnetism
- Close to sources of powerful electromagnetic radiation, such as radios or TV transmitters
- Locations subject to strong vibration or shock

Ventilation

To prevent heat buildup, do not block air circulation around the camera.

Transportation

When transporting the camera, repack it as originally packed at the factory or in materials of equal quality.

Cleaning

- Use a blower to remove dust from the lens or optical filter.
- Use a soft, dry cloth to clean the external surfaces of the camera. Stubborn stains can be removed using a soft cloth dampened with a small quantity of detergent solution, then wipe dry.
- Do not use volatile solvents such as alcohol, benzene or thinners as they may damage the surface finishes.

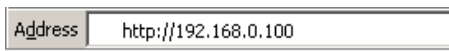
Operating the Camera

The Operating the Camera section explains how to monitor the image from the camera using the Web browser. Use Internet Explorer as the Web browser. For setting the camera, see “Adminstrating the Camera” on page 16.

Logging in to Homepage — Welcome Page

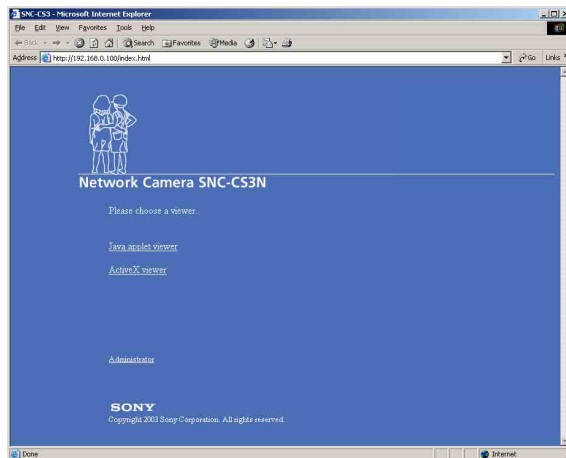
Logging in as a User

- 1 Start the web browser on the computer and type the IP address of the camera you want to monitor.



Address

The welcome page of **Network Camera SNC-CS3** is displayed.



- 2 Click to select the viewer. You can select the viewer from **Java applet viewer** or **ActiveX viewer** whichever is suitable for your system environments and usage. For details, see “About Viewers” on page 9. When you have selected the viewer, the main viewer page appears (see page 10).

Note

To operate the welcome page correctly, set the security level of the Internet Explorer to **Medium** or lower, as follows:

- 1 Select **Tool** from the menu bar of Internet Explorer, then select **Internet Options** and **Security** tab in sequence.
- 2 Click the **Internet** icon (when using the camera via the Internet) or **Local intranet** icon (when using the camera via a local network).
- 3 Set the slider to **Medium** or lower. (If the slider is not displayed, click **Default Level**.)

When using antivirus software in the computer

- When you use antivirus software in your computer, the camera performance may be reduced, for example, the frame rate for displaying the image may lower.
- The Web page displayed when you log in the camera uses Java Script. The display of the page may be affected if you use antivirus software in your computer.

Logging in as Administrator

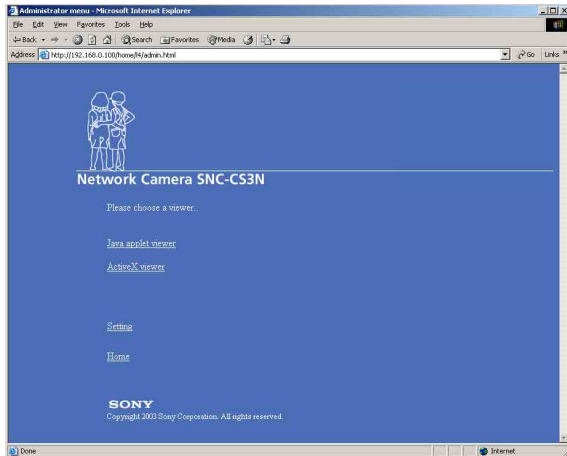
If you log in the camera as the Administrator, you can perform all the settings provided with the software. The Administrator may be logged in at any time, regardless of the number of the users being accessed.

- 1 Click **Administrator** on the welcome page. The login page appears.



- 2 Enter the user name and password for Administrator, then click **OK**. The user name “admin” and the password “admin” are set at the factory for the Administrator. You can change them on the User setting page in the Administrator menu (see page 25).

The welcome page is changed to that for Administrator.



- 3** Select the viewer.
You can select the viewer from **Java applet viewer** or **ActiveX viewer** whichever is suitable for your system environments and usage.
For details, see “About Viewers” on page 9.
When you have selected the viewer, the main viewer page appears (see page 10).

Other functions on the welcome page for Administrator

Setting

Click to display the Administrator menu (see page 16).

Home

Click to return to the normal welcome page.

About Viewers

You can select one of the following two viewers.

Java applet viewer

It displays the main viewer page using Java.
With this viewer, you can use all the functions provided with this software.

Notes

- The frame rate is lower than the ActiveX viewer.
- If the viewer does not operate correctly, install or activate Java as follows:

When you are going to activate Java on the computer with Microsoft VM installed

Select **Tool** from the menu bar of Internet Explorer, then select **Internet Option** and the **Advanced** tab in sequence, and check **JIT compiler for virtual machine**

enabled (requires restart). Then restart Internet Explorer.

When Microsoft VM is not installed

Install Java VM of Sun Microsystems, Inc. Download Java VM from Sun Home Page, and install it following the instructions on the installer. Then select **Tool** from the menu bar of Internet Explorer, and select **Internet Option** and the **Advanced** tab in sequence. Check Java (Sun), and restart Internet Explorer.

ActiveX viewer

It displays the main viewer page using ActiveX.
With this viewer, you can display images at a high frame rate and use all the functions provided with this software.

When you log in the camera using Internet Explorer for the first time, the Security Warning appears. Click **Yes** and install ActiveX Control.

Notes

- If you cannot display the image on Windows NT4.0 or Windows 98, install **MFC42DLL Version Up Tool** stored in the supplied CD-ROM.
- If **Automatic configuration** is enabled in the Local Area Network (LAN) Settings on Internet Explorer, the image may not be displayed. In this case, disable **Automatic configuration** and set the Proxy server manually. For setting the Proxy server, consult your network administrator.
- When you install ActiveX viewer on Windows NT4.0, Windows 2000 or Windows XP, you should have logged in the computer as the Administrator.

Tip

Every page of this software is optimized as display character size **Medium** for Internet Explorer.

Configuration of Main Viewer Page

When you select the viewer, the main viewer page is displayed.

This section briefly explains the functions of the parts and controls on the main viewer page. For a detailed explanation on each part or control, see the specified pages.

Main viewer page

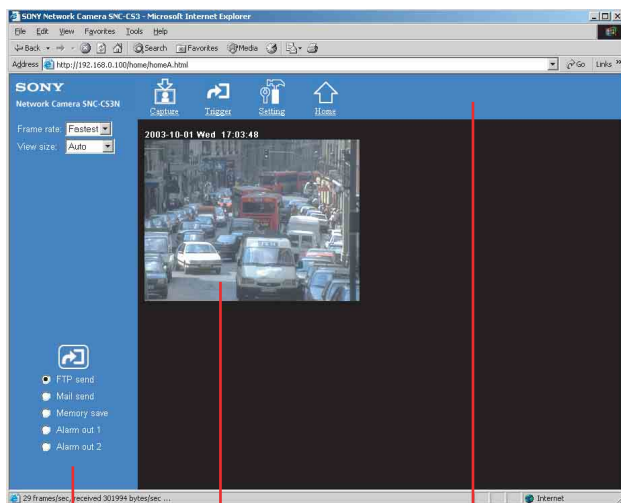


Image control section

Monitor image section

Menu section

Menu Section

The available functions are limited by user access right. You can change user access right on the User setting page (see page 25).



Capture

Captures a still image shot by the camera and stores it in the computer. (See “Capturing a Monitor Image” on page 13.)



Trigger

Displays the trigger control parts on the image control section.

By clicking the trigger button, you can control various applications manually. (See “Controlling the Application Manually” on page 12.)

User access right **Level 3** or **Level 4** is required for this function.



Setting

Displays the Administrator menu. (See “Configuration of Administrator Menu Page” on page 16.)

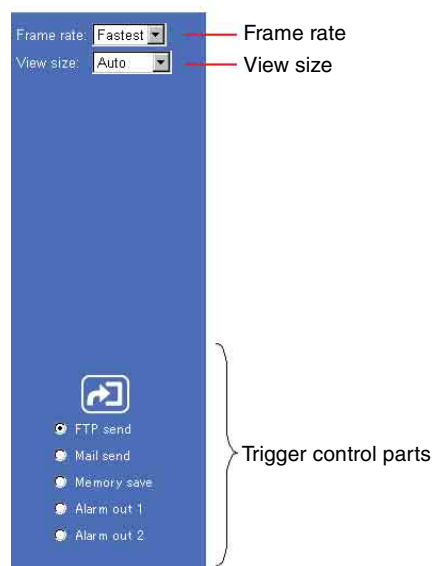
User access right **Level 4** is required for this function.



Home

Displays the Welcome page.

Image Control Section



Frame rate

View size

Trigger control parts

Frame rate

Selects the frame rate to transmit images. See “Selecting the frame rate” on page 11.

View size

Selects the image size to be displayed. See “Selecting the view size” on page 11.

Trigger control parts

These parts are displayed when you click **Trigger** on the menu section. You can output a trigger using these parts. See “Controlling the Application Manually” on page 12.

Monitor Image Section

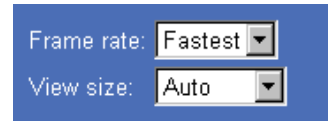


The image shot by the camera is shown here.

Controlling the Monitor Image

You can control the monitor image from the image control section on the main viewer page.

Image control section



Selecting the frame rate

Click the down-arrow button in the **Frame rate** box and select the frame rate with which the images are transmitted, from the drop-down list.

You can select the frame rate from among the following:
SNC-CS3N:

1, 2, 3, 4, 5, 6, 8, 10, 15, 20, 25, Fastest

SNC-CS3P:

1, 2, 3, 4, 5, 6, 8, 12, 16, 20, Fastest

The numbers indicate “FPS” (the number of frames transmitted per second).

With **Fastest**, the camera transmits the maximum number of frames possible for the connected line. The maximum frame rate is 30 FPS for the SNC-CS3N and 25 FPS for the SNC-CS3P.

Note

The frame rate options indicate the maximum number of frames that can be transmitted. The number of frames actually transmitted may vary depending on the network environments and camera settings (image size and image quality settings).

Selecting the view size

Click the down-arrow button in the **View size** box and select the view size from the drop-down list.

You can select the view size from among the following:
Auto, 640 × 480, 320 × 240, 160 × 120

Auto is determined by the image size specified with **Image size** on the Camera setting page (see page 20).

Controlling the Application Manually

You can send an image or output a trigger to control the alarm output, using the image control section on the main viewer page.

For this function, user access right **Level 3** or **Level 4** is required (see page 25).



Click  **Trigger** on the menu section to display the trigger control parts.

Image control section (trigger control parts)




Sending a Still Image File to an FTP Server

If you select **FTP send** and click , the current still image is captured and the captured image file is sent to the FTP server.

To use this function, you need to select the **Use FTP client function** option and the **Manual** mode on the FTP client setting page.

For details, see “Sending Images to FTP Server — FTP client setting Page” on page 27.


Sending a Still Image via E-mail

If you select **Mail send** and click , the current still image is captured and an E-mail with the captured image file attached is sent to the E-mail address(es) specified on the SMTP setting page.

To use this function, you need to select the **Use SMTP function** option and the **Manual** mode on the SMTP setting page.

For details, see “Sending an Image via E-mail — SMTP setting Page” on page 31.


Recording a Still Image on the Built-in Memory of the Camera

If you select **Memory save** and click , the current still image is captured and stored in the memory.

To use this function, you need to select the **Use image memory function** option and the **Manual** mode on the Image memory setting page.

For details, see “Recording Images in Memory — Image memory setting Page” on page 35.

Controlling Alarm Output


If you select **Alarm out 1** or **Alarm out 2** and click , you can control alarm out 1 or alarm out 2 of the I/O port on the camera manually. Each click switches the relay between short-circuit and open alternately.

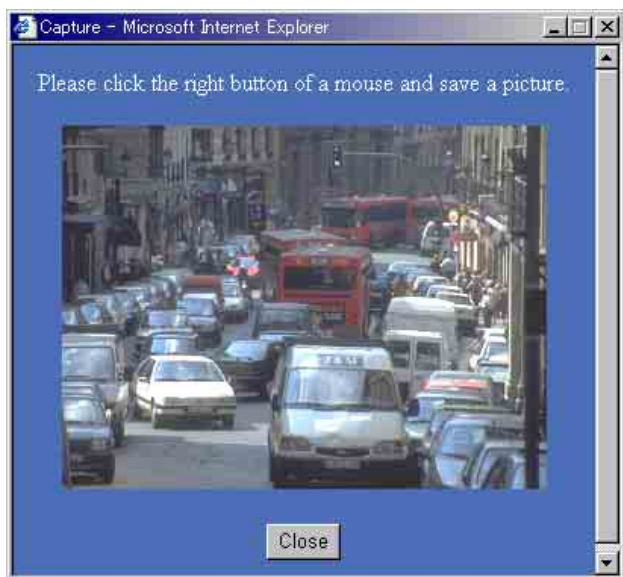
To use this function, you need to select the **Use alarm out 1 (or 2) function** option and the **Manual** mode on the Alarm out 1 or Alarm out 2 setting page.

For details, see “Setting the Alarm Out 1 or 2 — Alarm out 1 or 2 setting Page” on page 33.

For the connection of peripheral devices to the Alarm out of the I/O port, see the supplied Installation Manual.

Capturing a Monitor Image

If you click the  **Capture** button on the menu section, the current still image is captured and displayed on the monitor image section.



To save the captured image

Right-click on the monitor image and select **Save As** from the menu. Then, the Save Picture dialog appears. Type the file name and specify the destination to which the image file is to be stored, and click **Save**. The image is saved in the JPEG format.



Operating the Camera Using a Pocket PC

You can display images and operate the camera using a PDA (Personal Digital Assistant) that runs on Microsoft Pocket PC 2002.

System requirements

OS: Microsoft Pocket PC 2002

Web browser: Microsoft Internet Explorer

CPU: Strong ARM 206 MHz or higher

RAM: 64 MB or more

Plug-in: Jeode Ver.1.9.1 (Java available)

Note

Jeode is required to display an image from the camera and operate the camera. If Jeode is not installed, install it following the manual supplied with the Pocket PC.

Logging in to Homepage — Welcome Page

- 1 Start the web browser on the Pocket PC and type the IP address of the camera you want to monitor.

The welcome page of Network Camera SNC-CS3 is displayed.

- 2 Tap [Viewer].



The main viewer page appears.

Notes

- If the page is not displayed correctly, tap the Refresh button on the web browser.
- When you use antivirus software in your Pocket PC, the camera performance may be reduced, for example, the frame rate for displaying the image may lower.
- The Web page displayed when you log in the camera uses Java Script. The display of the page may be affected if you use antivirus software in your Pocket PC.

Configuration of Main Viewer Page

When you select the viewer, the main viewer page is displayed.

This section briefly explains the functions of the parts and controls on the main viewer page. For a detailed explanation on each part or control, see the specified pages.

Main viewer page



Monitor Image Section

If you set the Image size menu on the Camera setting page to **160 × 120** (see page 20), a higher frame rate is obtained with the Pocket PC.

Image Control Section



Tap to start the viewer operation.
The name of the button changes to **Stop**.




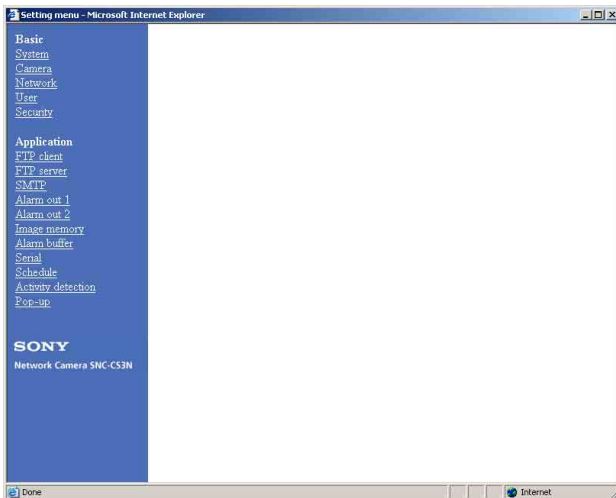
Tap to stop the viewer operation.
The image refreshment stops.
The name of the button changes to **Start**.

Administrating the Camera

The Administrating the Camera section explains how to set the functions of the camera by the Administrator. For monitoring the camera image, see “Operating the Camera” on page 8.

Configuration of Administrator Menu Page

The Administrator menu page is displayed when the Administrator having **Level 4** access right selects **Setting** on the welcome page for Administrator, or when the  **Setting** button on the menu section of the main viewer page is clicked.



The Administrator menu consists of the Basic menu and the Application menu. The Basic menu is used for basic settings of the camera, and the Application menu is used for setting various applications according to individual. Click on each menu name to display its setting page.

Basic menu

System

Displays the System setting page.
See “Configuring the System — System setting Page” on page 17.

Camera

Displays the Camera setting page.
See “Setting the Camera — Camera setting Page” on page 20.

Network

Displays the Network setting page.
See “Configuring the Network — Network setting Page” on page 22.

User

Displays the User setting page.
See “Setting the User — User setting Page” on page 25.

Security

Displays the Security setting page.
See “Setting the Security — Security setting Page” on page 26.

Application menu

FTP client

Displays the FTP client setting page.
See “Sending Images to FTP Server — FTP client setting Page” on page 27.

FTP server

Displays the FTP server setting page.
See “Downloading Images from the Camera — FTP server setting Page” on page 30.

SMTP

Displays the SMTP setting page.
See “Sending an Image via E-mail — SMTP setting Page” on page 31.

Alarm out 1

Displays the Alarm out 1 setting page.
See “Setting the Alarm Out 1 or 2 — Alarm out 1 or 2 setting Page” on page 33.

Alarm out 2

Displays the Alarm out 2 setting page.
See “Setting the Alarm Out 1 or 2 — Alarm out 1 or 2 setting Page” on page 33.

Image memory

Displays the Image memory setting page.
See “Recording Images in Memory — Image memory setting Page” on page 35.

Alarm buffer

Displays the Alarm buffer setting page.
See “Setting the Alarm Buffer — Alarm buffer setting Page” on page 38.

Serial

Displays the Serial setting page.
See “Communicating Data via Serial Port — Serial setting Page” on page 38.

Schedule

Displays the Schedule setting page.
See “Setting the Schedule — Schedule setting Page” on page 39.

Activity detection

Displays the Activity detection setting page.
See “Setting the Activity Detection Function — Activity detection setting Page” on page 40.

Pop-up

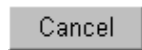
Displays the Pop-up setting page.
See “Showing the Pop-up — Pop-up setting Page” on page 41.

Buttons common to every setting page

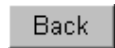
The following buttons are displayed on the setting pages where they are necessary. The functions of the buttons are the same on every setting page.



Click this button to validate the settings.



Click this button to invalidate the set values and return to the previous settings.



Click this button to return to the top of the setting page.

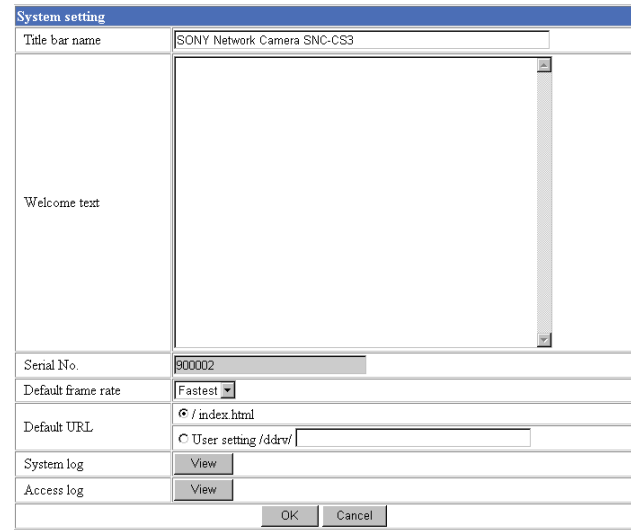
General notes on setting pages

- After changing a setting on a setting page, wait at least 10 seconds before turning off the power of the camera. If the power is turned off immediately, the changed setting may not be stored correctly.
- When you display the Area setting page or Activity detection setting page, the size of the image on the main viewer page may change for a while. This is not a problem.

Configuring the System — System setting Page

When you click **System** on the Administrator menu, the System setting page appears.
Use this page to perform the principal settings of the software.

System setting Section



The screenshot shows the 'System setting' window. The title bar name is 'SONY Network Camera SNC-CS3'. The main area contains a 'Welcome text' field. Below this are several settings: 'Serial No.' (900002), 'Default frame rate' (Fastest), 'Default URL' (User setting /ddrw/), 'System log' (View), and 'Access log' (View). At the bottom right are 'OK' and 'Cancel' buttons.

Title bar name

Type a name to display on the title bar up to 32 characters.

Welcome text

Type a text to show on the welcome page, in HTML format, up to 1,024 characters. Use the
 tag for a line break. (A line break is equivalent to 2 characters.)

Serial No.

Displays the serial number of the camera.

Default frame rate

Select the initial frame rate which is selected when you log in the camera and display the main viewer page. Click the down-arrow button in the box and select the frame rate from the drop-down list.

The selectable frame rates are the following:

SNC-CS3N:

1, 2, 3, 4, 5, 6, 8, 10, 15, 20, 25, Fastest

SNC-CS3P:

1, 2, 3, 4, 5, 6, 8, 12, 16, 20, Fastest

The numbers indicate “FPS” (the number of frames transmitted per second).

With **Fastest**, the camera transmits the maximum number of frames possible for the connected line. The maximum frame rate is 30 FPS for the SNC-CS3N and 25 FPS for the SNC-CS3P.

Note

To update the main viewer page for the changed setting, click **Refresh** of the browser.

Default URL

Select the homepage to be displayed when you enter the IP address of the camera in the Address box of the browser.

To display the homepage built in the camera

Select **/index.html**.

To display your individual homepage

You can display the favorite homepage that you have created using the CGI commands of the camera. Store the HTML file in the built-in flash memory using the Custom Homepage Installer included in the supplied CD-ROM.

- 1 Select **User Setting/ddrv/**.
- 2 Store the HTML file in the built-in flash memory using the Custom Homepage Installer included in the supplied CD-ROM.
For use of the Custom Homepage Installer, see page 48.
- 3 Type the path of the homepage in the text box up to 64 characters.

System log

Click **View** to display the Log file events page. The Log file events page shows the software version and troubleshooting information.

Access log

Click **View** to display the Access log page. The Access log page shows the history of accessing the camera.

Date time setting Section

| Date time setting | |
|---|--|
| Current date time | 2003-08-07 23:04:05 |
| System(PC) current date time | 2003-08-08 13:05:29 <input type="button" value="Apply"/> |
| Manual current date time (20yy-mm-dd hh:mm:ss) | 20 03 . 01 . 00 : 00 : 00 <input type="button" value="Apply"/> |
| Time zone selecting | (GMT-05:00) Bogota, Lima, Quito, Eastern Time(US & Canada) <input type="button" value="Apply"/> |
| Date time format | yyyy-mm-dd hh:mm:ss <input type="button" value="Apply"/> |
| Synchronization with NTP server | <input type="radio"/> On <input type="radio"/> Off NTP server name <input type="text"/> Interval time 1 hours <input type="button" value="Apply"/> |

Current date time

Displays the date and time set on the camera. You can set the date and time using the following two methods.

Note

When you purchased the camera, be sure to check the date and time of the camera and set them if necessary.

System (PC) current date time

Displays the date and time set on your computer. Click **Apply** to transfer the computer's date and time to the camera. The set date and time are shown on Current date time.

Manual current date time

When you want to set the camera's date and time manually. Select the lower 2-digits of the year, month, date, hour, minutes and seconds from each drop-down list. Click **Apply** to change the Current date time setting to the date and time you selected.

Time zone selecting

Set the time difference from Greenwich Mean Time in the area where the camera is installed. When you send an E-mail, the sending date and time is adjusted according to this setting. Select the time zone where the camera is installed from the drop-down list. Click **Apply** to change the Current date time setting according to the selection.

Notes

- If the time zone selected on the Time zone selecting menu is different from that set on the computer, the

time is adjusted using the time zone difference and set on the camera.

- Due to the network properties, there may be a slight difference between the actual time and the time set on the camera.

Date time format

Select the format of date and time to be displayed on the monitor image from the drop-down list.

You can select from among **yyyy-mm-dd hh:mm:ss** (year-month-day hour:minute:second), **mm-dd-yyyy hh:mm:ss** (month-day-year hour:minute:second), and **dd-mm-yyyy hh:mm:ss** (day-month-year hour:minute:second).

Click **Apply** to transfer the setting to the camera.

Synchronization with NTP server

Synchronizes the camera's time with that of the NTP (Network Time Protocol) server.

Select **On** to activate the time synchronization, and **Off** to deactivate it.

NTP server name

Type the host name or IP address of the NTP server, up to 64 characters.

This setting is valid when the Synchronization with NTP server menu is set to **On**.

Interval time

Select the interval at which you want to adjust the camera's time referring to the NTP server' time, between 1 and 24 hours. The set interval is a guide, and does not indicate the exact time.

This setting is valid when the Synchronization with NTP server menu is set to **On**.

Note

The time adjusted by this function may be slightly in error depending on the network environments between the camera and the NTP server.

Initialization Section

| Initialization | |
|-----------------|-----------------|
| Backup setting | Save |
| Restore setting | Browse... Apply |
| Reboot | Reboot |
| Factory default | Factory default |

Backup setting

Saves the setting data of the camera in a file.

Click **Save**, and follow the instructions on the browser to specify the folder and save the setting data of the camera. The file name preset at the factory is “snc-cs3.cfg.”

Restore setting

Loads the stored setting data of the camera.

Click **Browse** and select the file in which the setting data is stored. Then, click **Apply**, and the camera is adjusted according to the loaded data and restarted.

Note

The IP address setting in the Wired LAN setting section (see page 22) on the Network setting page cannot be set.

Reboot

Reboots the camera.

Click **Reboot**, and “The SNC-CS3 will be rebooted.

Are you sure?” appears. Click **OK** to reboot the camera.

Factory default

Resets the camera to the factory settings.

Click **Factory default**, and “All configuration information will be initialized as factory setting. Are you sure?” appears. Click **OK** to reset to the factory settings.

Setting the Camera

— Camera setting Page

When you click **Camera** on the Administrator menu, the Camera setting page appears.
Use this page to set the functions of the camera.

Note

To update the camera for the changed setting, click **Apply** on the changed item.

Camera setting Section

| Camera setting | |
|--------------------|---|
| Image size | Maximum alarm images change by selecting the list box. 640x480(Auto) <input type="button" value="Apply"/> |
| Image quality | Maximum alarm images change by selecting the list box. Level 5 <input type="button" value="Apply"/> |
| Image | <input checked="" type="radio"/> Color <input type="radio"/> Monochrome <input type="button" value="Apply"/> |
| Area setting | <input type="radio"/> On <input checked="" type="radio"/> Off <input type="button" value="Apply"/> <input type="button" value="Area setting"/> |
| White balance mode | Auto <input type="button" value="Apply"/> |
| Exposure mode | Auto Iris lens <input type="button" value="Apply"/> |
| | AGC <input checked="" type="radio"/> Normal <input type="radio"/> Turbo <input type="button" value="Apply"/> |
| | Shutter mode <input checked="" type="radio"/> Auto <input type="radio"/> Manual <input type="button" value="Apply"/> |
| | Back light compensation <input type="radio"/> On <input checked="" type="radio"/> Off <input type="button" value="Apply"/> |
| | Lens adjust: 137 (0 to 255) <input type="button" value="Apply"/> |
| Saturation | 0 (-3 to 3) <input type="button" value="Apply"/> |
| Sharpness | 7 (1 to 16) <input type="button" value="Apply"/> |
| Contrast | 0 (-3 to 3) <input type="button" value="Apply"/> |
| Camera reset | <input type="button" value="Apply"/> |

Image size

Select the size of the image to be transmitted to the computer.

You can select from among the following options.

SNC-CS3N:

736 × 480 (Auto), **736 × 480 (Frame)**, **736 × 480 (Field)**, **640 × 480 (Auto)**, **640 × 480 (Frame)**, **640 × 480 (Field)**, **320 × 240**, **160 × 120**

SNC-CS3P:

736 × 544 (Auto), **736 × 544 (Frame)**, **736 × 544 (Field)**, **640 × 480 (Auto)**, **640 × 480 (Frame)**, **640 × 480 (Field)**, **320 × 240**, **160 × 120**

Frame is suitable for still images, and **Field** is suitable for animation.

If you select **Auto**, the image mode changes between **Frame** and **Field** automatically: **Frame** when the subject is a still object, and **Field** when the subject is moving.

Image quality

Select the image quality from **Level 1** to **Level 10**. A higher level gives a higher image quality, but the frame rate decreases as the data size increases.

Tip

The following table shows the relation between the data size of a 24-bit image (8 bits for each R, G and B), and the compression rate for each Level setting. (in case of 640 × 480 image)

| Level | Data size (approx.) | Compression rate (approx.) |
|-------|---------------------|----------------------------|
| 1 | 15 KB | 1/60 |
| 2 | 18 KB | 1/50 |
| 3 | 22.5 KB | 1/40 |
| 4 | 25.7 KB | 1/35 |
| 5 | 30 KB | 1/30 |
| 6 | 36 KB | 1/25 |
| 7 | 45 KB | 1/20 |
| 8 | 60 KB | 1/15 |
| 9 | 90 KB | 1/10 |
| 10 | 180 KB | 1/5 |

Image

Select **Color** or **Monochrome**.

Area setting

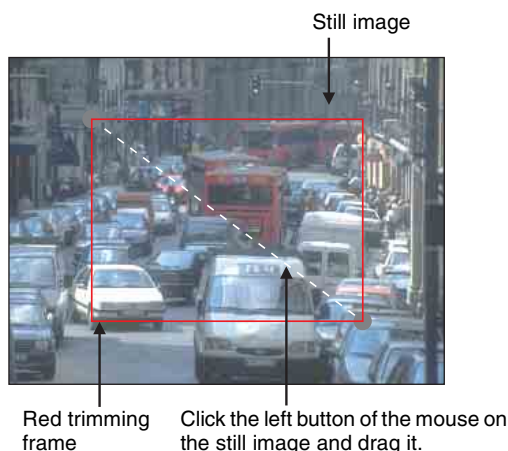
When the image size is **736 × 480** or **640 × 480** for the SNC-CS3N, or **736 × 544** or **640 × 480** for the SNC-CS3P, you can trim a portion of the image and display the trimmed image on the computer. With the trimming, the transmitting data size, and thus, the network load is reduced and a higher frame rate is obtained.

Select **On** for trimming the image, or **Off** for no trimming.

To trim an image

- 1 Set the Image size menu to **736 × 480** or **640 × 480** for the SNC-CS3N, or **736 × 544** or **640 × 480** for the SNC-CS3P.
- 2 Set the Area setting menu to **On**, and click **Apply**.
- 3 Click the Area setting button. A still image is displayed.
- 4 Specify the trimming portion.

Click the left button of the mouse on the still image and drag it diagonally. The red frame that appears as you drag indicates the trimming portion.



- 5 Click **OK** at the bottom of the window. The trimmed image is displayed on the main viewer page.
- 6 To close the image, click **X** on the upper-right corner.

White balance mode

Select the white balance mode from among **Auto**, **Indoor1**, **Indoor2**, **Outdoor**, and **One push WB**.

Auto: to automatically adjust the white balance.

Indoor1: to adjust the white balance for shooting indoors under an incandescent lamp (about 3200 K)

Indoor2: to adjust the white balance for shooting indoors under a fluorescent lamp (about 4200 K)

Outdoor: to adjust the white balance for shooting outdoors (about 6300 K)

One push WB: The One push trigger button is displayed. Click the button to adjust the white balance instantly.

Exposure mode

Select the exposure adjustment mode from among **Auto Iris lens**, **CCD Iris**, and **Manual**.

The setting items required for each setting appear.

Auto Iris lens: Select this option when you use an auto-iris lens.

| | | | |
|---------------|----------------|---|-------|
| Exposure mode | Auto Iris lens | <input type="radio"/> Normal <input type="radio"/> Turbo | Apply |
| | AGC | <input checked="" type="radio"/> Normal <input type="radio"/> Turbo | Apply |
| | Shutter mode | <input type="radio"/> Auto <input checked="" type="radio"/> Manual | Apply |
| | Lens adjust | 137 (0 to 255) | Apply |
| | Shutter | 1/60 sec | Apply |

CCD Iris: Select this option when you use a fixed-iris lens to adjust the exposure using the electronic shutter and AGC (Automatic Gain Control).

| | | | |
|---------------|-------------------------|---|-------|
| Exposure mode | CCD Iris | <input type="radio"/> Normal <input type="radio"/> Turbo | Apply |
| | AGC | <input checked="" type="radio"/> Normal <input type="radio"/> Turbo | Apply |
| | Back light compensation | <input checked="" type="radio"/> On <input type="radio"/> Off | Apply |

Manual: Adjust the electronic shutter and gain manually.

| | | | |
|---------------|---------|----------|-------|
| Exposure mode | Manual | | Apply |
| | Gain | 0 dB | Apply |
| | Shutter | 1/60 sec | Apply |

AGC (Automatic Gain Control)

Adjusts the gain automatically according to the lighting conditions of the subject.

When you select **Turbo**, the maximum gain level is higher than that in the **Normal** setting by about 6 dB.

Back light compensation

Select **On** to activate the backlight compensation, or **Off** to deactivate it.

Lens adjust

Select the iris convergence level for the auto-iris lens from **0** to **255**.

Shutter mode

Select the electronic shutter mode, **Auto** or **Manual**. The setting items required for each setting appear.

Shutter

Select the electronic shutter speed from among the following:

SNC-CS3N:

1/10000, **1/4000**, **1/2000**, **1/1000**, **1/500**, **1/250**, **1/100**, **1/60** (seconds).

SNC-CS3P:

1/10000, **1/4000**, **1/2000**, **1/1000**, **1/500**, **1/250**, **1/120**, **1/50** (seconds).

Gain

Select the gain (dB) from among the following:
0 dB, **6 dB**, **12 dB**, **18 dB**

Saturation

Select the saturation in 7 steps, from **-3** to **3**.
 Selecting **3** gives the image with the highest saturation.

Note

The Saturation setting is effective for the computer image only. (It is not effective for the video signal output.)

Sharpness

Select the sharpness in 16 steps, from **1** to **16**.
 Selecting **16** gives the image with the highest sharpness.

Contrast

Select the contrast in 7 steps, from **-3** to **3**.
 Selecting **3** gives the image with the highest contrast.

Note

The Contrast setting is effective for the computer image only. (It is not effective for the video signal output.)

Camera reset

Click **Apply**, and “Camera reset OK?” appears. Click **OK** on the dialog to reset the camera settings on the Camera setting page to the factory settings.

Configuring the Network — Network setting Page

When you click **Network** on the Administrator menu, the Network setting page appears.
 Use this page to configure the network to connect the camera and the computer.

Wired LAN setting Section

This section provides the menus for connecting the camera through the network cable.

| Network setting | |
|---|---|
| Wired LAN setting | |
| DHCP | <input checked="" type="radio"/> On <input type="radio"/> Off |
| DNS auto acquisition | <input checked="" type="radio"/> On <input type="radio"/> Off |
| IP address | <input type="text" value="192.168.0.100"/> |
| Subnet mask | <input type="text" value="255.0.0.0"/> |
| Default gateway | <input type="text"/> |
| MAC address | <input type="text" value="08-00-46-98-d7-6e"/> |
| Primary DNS | <input type="text"/> |
| Secondary DNS | <input type="text"/> |
| Bandwidth control | <input type="text" value="Unlimited"/> Mbps |
| <input type="button" value="OK"/> <input type="button" value="Cancel"/> | |

DHCP

Select **On** to assign the IP address to the camera automatically. When you have assigned a proper IP address to the camera, select **Off**.

Note

When you set DHCP to **On**, make sure that there is an DHCP server on the network.

DNS auto acquisition

When DHCP is set to **On**, select if the IP address of the DNS server is assigned automatically or not. Select **On** to assign the IP address of the DNS server automatically.

IP address

Type the IP address of the camera.

Subnet mask

Type the subnet mask.

Default gateway

Type the default gateway.

MAC address

Displays the MAC address of the camera.

Primary DNS

Type the IP address of the primary DNS server.

Secondary DNS

Type the IP address of the secondary DNS server, if necessary.

Bandwidth control

Limits the data communication bandwidth of the camera.

You can select from among the following:

Unlimited, 0.5, 0.6, 0.7, 0.8, 0.9, 1.0, 2.0, 3.0, 4.0, 5.0, 6.0, 7.0, 8.0 (Mbps)

Select **Unlimited** when you do not want to limit the bandwidth.

Notes

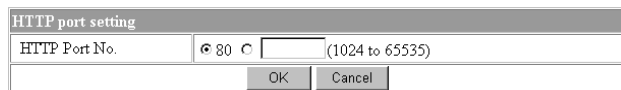
- If you limit the bandwidth, the camera performance may be affected, for example, the frame rate of image display may be reduced.
- The actual bandwidth may differ from the selected option depending on the network environments.

OK/Cancel

See “Buttons common to every setting page” on page 17.

HTTP port setting Section

You can set the port number for the HTTP server on the camera.



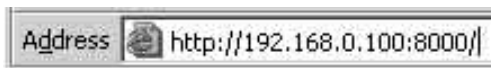
HTTP port No.

Normally select **80**. If you want to use a port number other than 80, select the text box and type a port number between 1024 and 65535.

Note

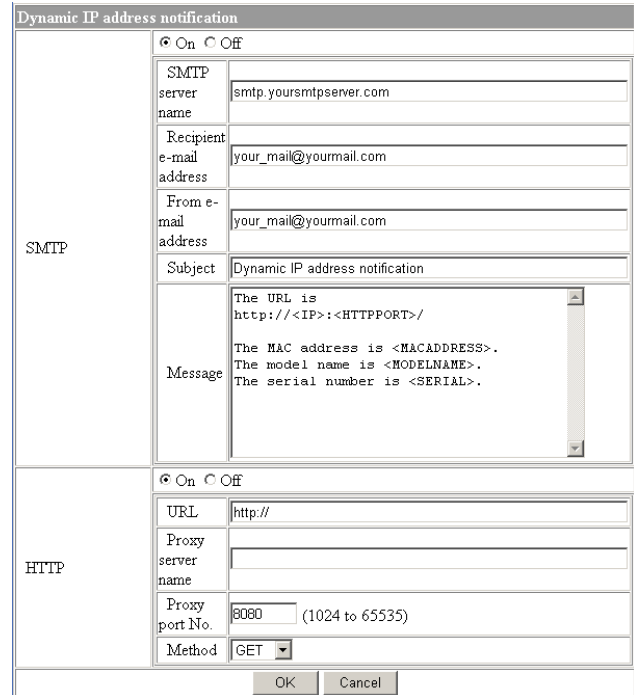
When you have set the HTTP port No. to a number other than 80 on the Network setting page or in the Setup Program, access the camera by typing the IP address of the camera on the web browser, as follows:

Example: when HTTP port No. is set to 8000



Notifying the IP Address — Dynamic IP address notification Section

When the DHCP menu is set to **On**, you can send the notification of the completion of the network settings (Wired LAN settings) using the SMTP or HTTP protocol.



SMTP

Select **On** to send an E-mail when the DHCP setting is completed.

SMTP server name

Type the name or IP address of the SMTP server you want to use for sending an E-mail, up to 64 characters.

Recipient e-mail address

Type the recipient E-mail address up to 64 characters. You can specify only one recipient E-mail address.

From e-mail address

Type the E-mail address that is displayed in the From field of E-mails, up to 64 characters. This is used as the reply address or the address for the system mail from the mail server.

Subject

Type the subject/title of the E-mail up to 64 characters.

Message

Type the text of the E-mail up to 384 characters. You can describe the information of the acquired IP address, etc. using the special tags mentioned below.

HTTP

Select **On** to output a command to the HTTP server when the DHCP setting is completed. Using this function, you can configure a useful system, for example, to view the access log stored in the HTTP server or start an external CGI program.

URL

Specify the URL to send HTTP commands, up to 256 characters. The URL is normally described as follows:

`http://ip_address[:port]/path?parameter`

ip_address: Type the IP address or host name of the host to which you want to connect.

[:port]: Specify the port number to which you want to connect. If you want to use Well-known port number 80, you do not need to input this value.

path: Type the command name.

parameter: Type the command parameter if necessary. You can use the special tags mentioned below for the parameters.

Proxy server name

When you send HTTP commands via a proxy server, type the name or IP address of the proxy server, up to 64 characters.

Proxy port No.

Specify the port number when you send HTTP commands via the proxy server. Set the port number between 1024 and 65535.

Method

Select the HTTP method **GET** or **POST**.

About the special tags

You can use the following five special tags to allow the notification of the settings acquired by the DHCP, such as an IP address. Type the tags in the parameter section of the URL that you describe in the Message field of the SMTP menu.

<IP>

Use this tag to embed the IP address acquired by the DHCP in the text or parameter.

<HTTPPORT>

Use this tag to embed the specified HTTP server port number in the text or parameters.

<MACADDRESS>

Use this tag to embed the MAC address of the interface which IP address you have acquired by the DHCP, in the text or parameter.

<MODELNAME>

Use this tag to embed the camera's model name (SNC-CS3N or SNC-CS3P) in the text or parameter.

<SERIAL>

Use this tag to embed the camera's serial number in the text or parameter.

Setting the User

— User setting Page

When you click **User** on the Administrator menu, the User setting page appears.
 Use this page to set the user names and passwords of Administrator and up to 9 kinds of users (User 1 to User 9), and the access right of each user.

| User ID | User name | Password | Re-type password | Access right |
|-------------------|----------------------|---|--------------------------|-----------------|
| Administrator | admin | ***** | ***** | Level 4 |
| User 1 | <input type="text"/> | <input type="password"/> | <input type="password"/> | No access right |
| User 2 | <input type="text"/> | <input type="password"/> | <input type="password"/> | No access right |
| User 3 | <input type="text"/> | <input type="password"/> | <input type="password"/> | No access right |
| User 4 | <input type="text"/> | <input type="password"/> | <input type="password"/> | No access right |
| User 5 | <input type="text"/> | <input type="password"/> | <input type="password"/> | No access right |
| User 6 | <input type="text"/> | <input type="password"/> | <input type="password"/> | No access right |
| User 7 | <input type="text"/> | <input type="password"/> | <input type="password"/> | No access right |
| User 8 | <input type="text"/> | <input type="password"/> | <input type="password"/> | No access right |
| User 9 | <input type="text"/> | <input type="password"/> | <input type="password"/> | No access right |
| User access right | | Level 4 | | |
| | | <input type="button" value="OK"/> <input type="button" value="Cancel"/> | | |

Administrator, User 1 to 9

Specify **User name**, **Password**, **Re-type password** and **Access right** for each user ID.

User name

Type a user name between 4 and 16 characters.

Password

Type a password between 4 and 16 characters.

Re-type password

To confirm the password, type the same characters as you typed in the Password box.

Note

If you type an incorrect character in the User name, Password or Re-type password box, a message like the following appears. In this case, click **OK** to cancel the message and re-type the correct character.



Access right

Select the access right for each user from the drop-down list. You can select from **Level 1** to **Level 4**. The rights afforded to each access right are as follows:

Level 1, Level 2: Allows monitoring of the camera image (including some operations for monitoring).

Level 3: Allows monitoring of the camera image and manual application operations.

Level 4: Allows all the access right as Administrator.

No access right: Use this option when you want to prohibit access to the camera temporarily.

User access right

Select the level of the access right to require user authentication.

The authentication dialog will appear where user authentication is required.

Level 1: Performs user authentication when a user accesses the following pages: main viewer page (page 10), Trigger control parts (page 12) or Administrator menu page (page 16).

Level 2, Level 3: Performs user authentication when a user accesses the following pages: Trigger control parts or Administrator menu page.
 No user authentication is required to display the main viewer page.

Level 4: Performs user authentication when a user accesses the Administrator menu page only.
 No user authentication is required to display the other pages.

OK/Cancel

See “Buttons common to every setting page” on page 17.

Setting the Security

— Security setting Page

When you click **Security** on the Administrator menu, the Security setting page appears.
Use this page to limit the computers that can access the camera.

Activating/Deactivating the Security Function

— Security usage setting Page

| Security usage setting | |
|---|------------------------------|
| <input type="radio"/> | Use security function |
| <input checked="" type="radio"/> | Do not use security function |
| <input type="button" value="OK"/> <input type="button" value="Cancel"/> | |

To activate the security function, select **Use security function**, then click **OK**. The Security setting page appears.
If you do not use the security function, select **Do not use security function**, then click **OK**.

Setting the Security Function

—Securing setting Page

| Security setting | | |
|---|-------------------|---------|
| Default policy | Allow ▾ | |
| Network address/Subnet 1 | 192.168.0.90 / 32 | Allow ▾ |
| Network address/Subnet 2 | 192.168.1.0 / 24 | Deny ▾ |
| Network address/Subnet 3 | 0.0.0.0 / 8 | Allow ▾ |
| Network address/Subnet 4 | 0.0.0.0 / 8 | Allow ▾ |
| Network address/Subnet 5 | 0.0.0.0 / 8 | Allow ▾ |
| Network address/Subnet 6 | 0.0.0.0 / 8 | Allow ▾ |
| Network address/Subnet 7 | 0.0.0.0 / 8 | Allow ▾ |
| Network address/Subnet 8 | 0.0.0.0 / 8 | Allow ▾ |
| Network address/Subnet 9 | 0.0.0.0 / 8 | Allow ▾ |
| Network address/Subnet 10 | 0.0.0.0 / 8 | Allow ▾ |
| <input type="button" value="OK"/> <input type="button" value="Cancel"/> | | |

Default policy

Select the basic policy of the limit from **Allow** and **Deny**.
If you select **Allow**, you will basically allow access to the camera and only deny access from the computers specified on the Network address/Subnet 1 to Network address/Subnet 10 menus below.
If you select **Deny**, you will basically deny access to the camera, and only allow access from the computers specified on the Network address/Subnet 1 to Network address/Subnet 10 menus.

Network address/Subnet 1 to Network address/Subnet 10

Type the IP addresses and subnet mask values you want to allow or deny access to the camera.
You can specify up to 10 IP addresses and subnet mask values. For a subnet mask, type 8 to 32.
To temporarily cancel the Default Policy for a specified IP address/subnet mask, select **Allow** or **Deny** from the drop-down list on the right.

Tip

The subnet mask value represents the bit number from the left of the network address.
For example, the subnet mask value for 255.255.255.0 is 24.
If you set “192.168.0.0/24, Allow,” you can allow access from the computers having an IP address between 192.168.0.0 and 192.168.0.255.

Note

You can access the camera even from a computer having the IP address whose access right is set to **Deny**, if you enter the user name and password set for Level 4 access right on the authentication dialog displayed.

OK/Cancel

See “Buttons common to every setting page” on page 17.

Sending Images to FTP Server

— FTP client setting Page

When you click **FTP client** on the Administrator menu, the FTP client setting page appears.

Use this page to set up for capturing and sending still images to an FTP server. You can capture a still image at the moment when a trigger occurs by an external sensor input, the built-in activity detection function or a manual trigger button, or capture sequenced still images before and after the trigger. The captured still image(s) is sent to the FTP server (FTP client function). You can also send still images periodically.

Activating/Deactivating the FTP Client Function

— FTP client usage setting Page

| FTP client usage setting | |
|---|--------------------------------|
| <input type="radio"/> | Use FTP client function |
| <input checked="" type="radio"/> | Do not use FTP client function |
| <input type="button" value="OK"/> <input type="button" value="Cancel"/> | |

To activate the FTP client function, select **Use FTP client function** and click **OK**. The FTP client setting page appears.

When you do not use the FTP client function, select **Do not use FTP client function** and click **OK**.

Note

The frame rate and operability on the main viewer page may decrease while a file is being transmitted by the FTP client function.

Setting the FTP Client Function

— FTP client setting Page

| FTP client setting | |
|---|--|
| FTP server name | <input type="text" value="ftp.yourstpserver.com"/> |
| User name | <input type="text" value="anonymous"/> |
| Password | <input type="password" value=""/> |
| Re-type password | <input type="password" value=""/> |
| Remote path | <input type="text" value="/"/> |
| Image file name | <input type="text" value="image"/> |
| Suffix | <input type="radio"/> None <input checked="" type="radio"/> Date/Time <input type="radio"/> Sequence number |
| Sequence No. clear | <input type="button" value="Apply"/> |
| Mode | <input checked="" type="radio"/> Manual <input type="radio"/> Alarm <input type="radio"/> Periodical sending |
| <input type="button" value="Back"/> <input type="button" value="OK"/> | |

FTP server name

Type the FTP server name to upload still images up to 64 characters, or the IP address of the FTP server.

User name

Type the user name for the FTP server.

Password

Type the password for the FTP server.

Re-type password

To confirm the password, type the same characters as you typed in the Password box.

Remote path

Type the path to the destination up to 64 characters.

Image file name

Type the basic file name you want to assign to the images when sending to the FTP server. You can use up to 6 alphanumeric, - (hyphen) and _ (underscore) for naming.

Suffix

Select the suffix to add to the file name.

None: No suffix is added. The basic file name is assigned to the image to be sent to the FTP server.

Date/Time: The date/time suffix is added to the file name.

The date/time suffix consists of lower two-digits of year (2 digits), month (2 digits), date (2 digits), hour (2 digits), minute (2 digits), second (2 digits) and consecutive number (2 digits), thus 14-digit number is added to the file name.

Sequence number: A consecutive number of 10 digits between 0000000000 and 4294967295 is added to the basic file name.

Tip

When the Mode menu is set to **Alarm**, the type of alarm and the capture timing to the alarm are added to the suffix.

Type of alarm: **S1** (Sensor), **AD** (Activity Detection)
 Capture timing: **PR** (Pre-alarm), **JT** (Just alarm), **PT** (Post-alarm)


Sequence No. clear

Click **Apply** to reset the Sequence number suffix to 0.

Mode

Select the mode of the FTP client function.

Manual: Sends still images to the FTP server manually. After selecting **Manual**, click **OK**. The FTP client function mode is set to **Manual**.

In this mode, when you click the  (Trigger) button on the main viewer page, a still image is captured and sent to the FTP server. (See “Controlling the Application Manually” on page 12.)

Alarm: Sends still images to the FTP server by synchronizing with an external sensor input or the built-in activity detection function. When you select **Alarm**, the Alarm mode setting section appears (see page 28).

Note

If the Suffix menu is set to **None**, you cannot select the **Alarm** mode. When you want to use the Alarm mode, set the Suffix menu to **Date/Time** or **Sequence number**.

Periodical sending: Sends still images to the FTP server periodically. When you select **Periodical sending**, the Periodical sending mode setting section appears (see page 28).

Back/OK

See “Buttons common to every setting page” on page 17.

Alarm mode setting Section

| | | |
|---|--|---|
| Alarm | <input checked="" type="checkbox"/> Sensor <input type="checkbox"/> Activity detection | <input type="button" value="Activity detection"/> |
| Available period | <input checked="" type="radio"/> Always <input type="radio"/> Use scheduler | |
| Schedule No. | <input checked="" type="checkbox"/> 1 <input type="checkbox"/> 2 <input type="checkbox"/> 3 <input type="checkbox"/> 4 <input type="checkbox"/> 5 <input type="checkbox"/> 6 | <input type="button" value="Schedule check"/> |
| Alarm buffer configuration | <input type="button" value="Alarm buffer"/> | |
| Digest viewer | <input checked="" type="radio"/> On <input type="radio"/> Off | |
| <input type="button" value="Back"/> <input type="button" value="OK"/> | | |

Alarm

Select the alarm to link the FTP client function. If the selected alarm is detected, the still images before and after the alarm are captured sequentially and sent to the FTP server.

Sensor: External sensor connected to sensor input of the camera I/O port

Activity detection: The activity detection function built in the camera

To set the activity detection function, click **Activity detection**. The Activity detection setting page appears (see page 40).

Available period

Select the period for which the selected alarm mode is available.

Always: The selected alarm mode is available any time.

Use scheduler: The selected alarm mode is available according to the schedule selected in Schedule No. below.

Schedule No.

When **Use scheduler** is selected on the Available period menu, select the schedule you want the selected alarm mode being available.

Click to select the check box(es) **1** to **6**. You can select multiple schedules.

To check the contents of schedules, click **Schedule check**. (See “Setting the Schedule — Schedule setting Page” on page 39.)

Alarm buffer configuration

Click **Alarm buffer** to display the Alarm buffer setting page.

For details, see “Setting the Alarm Buffer — Alarm buffer setting Page” on page 38.

Note

If an alarm occurs during the Alarm buffer processing, that alarm is ignored.

Digest viewer

If you select **On**, an HTML file (.html) and a Java Script file (.js) are added each time the selected alarm is detected.

When you open the added HTML file using a general browser, the digest viewer runs and you can view the still pictures in the alarm buffer in sequence (quasi-animation).

See “Operating the Digest Viewer” on page 29.

Periodical sending mode setting Section

| | |
|---|--|
| Interval time | 00 H 10 M 00 S |
| Available period | <input checked="" type="radio"/> Always <input type="radio"/> Use scheduler |
| Schedule No. | <input checked="" type="checkbox"/> 1 <input type="checkbox"/> 2 <input type="checkbox"/> 3 <input type="checkbox"/> 4 <input type="checkbox"/> 5 <input type="checkbox"/> 6 <input type="button" value="Schedule check"/> |
| Backup sending mode | <input checked="" type="radio"/> On <input type="radio"/> Off |
| | Backup interval time: 00 H 00 M 01 S |
| | Built-in memory: Free space: 8315392byte |
| | <input type="button" value="View"/> |
| Log | <input type="button" value="Clear"/> |
| <input type="button" value="Back"/> <input type="button" value="OK"/> | |

Interval time

Type the interval at which you want to send images to the FTP server periodically. You can set the hour (H), minutes (M) and seconds (S) between 1 second and 24 hours (one day).

Note

The actual interval may be longer than the set value, depending on the image size and the network environments.

Available period

Select the period for which the periodical sending mode is available.

Always: The periodical sending mode is available any time.

Use scheduler: The periodical sending mode is available according to the schedule selected in Schedule No. below.

Schedule No.

When **Use scheduler** is selected on the Available period menu, select the schedule you want the periodical sending mode being available.

Click to select the check box(es) **1** to **6**. You can select multiple schedules.

To check the contents of schedules, click **Schedule check**. (See “Setting the Schedule — Schedule setting Page” on page 39.)

Backup sending mode

You can temporarily store (back up) still image data in the built-in memory (about 8 MB) when uploading to the FTP server is impossible due to a network failure, etc.

When the network recovers, the backup image data is uploaded to the FTP server.

This function is available only when **Periodical sending** is selected.

Select **On** to enable the Backup function.

Notes

- The Backup sending mode cannot be set to **On** when the image memory function (page 38) is activated. When you want to use the Backup function, deactivate the image memory function.
- When the backup memory capacity is full or the backup images exceed 2,560, new image data will not be stored. (The previously stored images are retained.)
- Backup image data is erased when the power of the camera is turned off.

Backup interval time

Specify the interval at which you want to send the backup image data to the FTP server. You can set a value between 1 second and the time set on the Interval time menu.

Note

The actual interval may be longer than the set value depending on image size and the network environments.

Built-in memory

Displays the built-in memory space.

Log

Click **View** to display the Backup FTP log page to show network failures and event information.

Click **Clear** to delete the log contents.

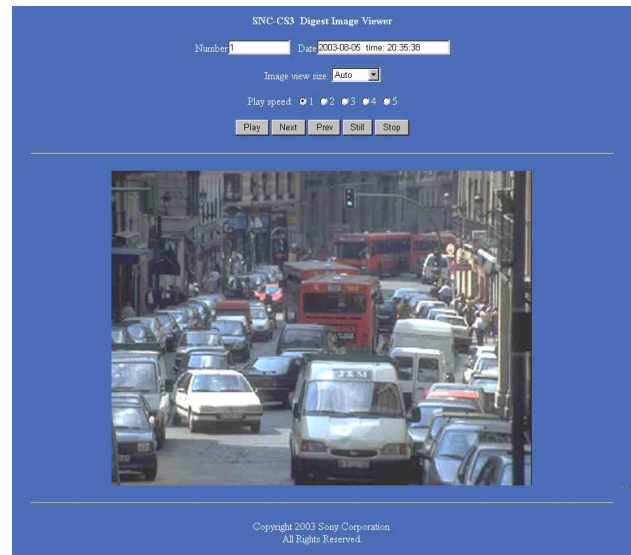
Note

The log contents are cleared when the power of the camera is turned off.

Operating the Digest Viewer

If you download the HTML file, the Java Script file and the JPEG image files to your computer and open HTML file using a general browser, the digest viewer is displayed on the screen.

Digest viewer



Number

Displays the consecutive still image number.

Date

Displays the date and time when the image is captured.

Image view size

Select the image size to be displayed on the digest viewer from among the following: **Auto**, **160 × 120**, **320 × 240**, **640 × 480**

When you select **Auto**, the image is displayed in the size specified with the Image size menu on the Camera setting page (see page 20).

Play speed

Select the play speed from **1** to **5**. **5** is the highest speed.

Note

Whether you can play the image at a high speed depends on the performance of your computer. You may need to select a lower speed.

Play

Click this button to start playing. Playing stops when the last still image is displayed.

Next

When a still image is displayed, click this button to display the next numbered still image.

Prev (previous)

When a still image is displayed, click this button to display the previous numbered still image.

Still

Click this button to stop playing temporarily.

Stop

Click to stop playing. The still image of number 1 is displayed.

Downloading Images from the Camera

— FTP server setting Page

When you click **FTP server** on the Administrator menu, the FTP server setting page appears.

Use this page to set up for the FTP server function which finds a specified still image file stored in the built-in memory of the camera (about 8 MB) or download the still image file.

Activating/Deactivating the FTP Server Function

— FTP server usage setting Page

| FTP server usage setting | |
|---|--------------------------------|
| <input type="radio"/> | Use FTP server function |
| <input checked="" type="radio"/> | Do not use FTP server function |
| <input type="button" value="OK"/> <input type="button" value="Cancel"/> | |

To activate the FTP server function, select **Use FTP server function** and click **OK**. The FTP server setting page appears.

When you do not use the FTP server function, select **Do not use FTP server function** and click **OK**.

Notes

The frame rate and operability on the main viewer page may decrease when the FTP server function is used.

Setting the FTP Server Function — FTP server setting Page

You can register up to 10 user names and passwords to allow logging in the camera using the FTP client software of the computer.

| User ID | Password | Re-type password |
|---------|----------|------------------|
| admin | **** | **** |
| | | |
| | | |
| | | |
| | | |
| | | |
| | | |
| | | |
| | | |
| | | |
| | | |
| | | |

Built-in memory

Displays the free space of the built-in memory of the camera.

User ID

Type a user name between 4 and 16 characters.

Password

Type a password between 4 and 16 characters.

Re-type password

To confirm the password, type the same characters as you typed in the Password box.

Back/OK

See “Buttons common to every setting page” on page 17.

Sending an Image via E-mail — SMTP setting Page

When you click **SMTP** on the Administrator menu, the SMTP setting page appears.

Use this page to set up for the SMTP function that can capture and send a still image attached to an E-mail. You can capture a still image at the moment when a trigger occurs by an external sensor input, the built-in activity detection function or a manual trigger button. The captured still image is sent as an attachment of the E-mail. You can also send a still image periodically.

Activating/Deactivating the SMTP Function — SMTP usage setting Page

To activate the SMTP function, select **Use SMTP function** and click **OK**. The SMTP setting page appears.

When you do not use the SMTP function, select **Do not use SMTP function** and click **OK**.

Notes

The frame rate and operability on the main viewer page may decrease while an image file is being transmitted via an E-mail.

Setting the SMTP Function — SMTP setting Page

SMTP server name

Type the SMTP server name up to 64 characters, or the IP address of the SMTP server.

Recipient e-mail address

Type the recipient E-mail address up to 64 characters. You can specify up to three recipient E-mail addresses.

Administrator e-mail address

Type the Administrator e-mail address up to 64 characters. This address is used for reply mail and sending error messages from the camera.

Subject

Type the subject/title of the E-mail up to 64 characters.

Message

Type the text of the E-mail up to 384 characters. (A line break is equivalent to 2 characters.)

Image file name

Type the basic file name you want to assign to the image to attach an E-mail. You can use up to 6 alphanumeric, - (hyphen) and _ (underscore) for naming.

Suffix

Select the suffix to add to the file name.
None: No suffix is added. The basic file name is assigned to the image to be sent via an E-mail.

Date/Time: The date/time suffix is added to the file name.
 The date/time suffix consists of lower two-digits of year (2 digits), month (2 digits), date (2 digits), hour (2 digits), minute (2 digits) and second (2 digits) , thus 12-digit number is added to the file name.


Sequence number: A consecutive number of 10 digits between 0000000000 and 4294967295 is added to the basic file name.

Sequence No. clear

Click **Apply** to reset the Sequence number suffix to 0.

Mode

Select the mode of the SMTP function.

Manual: Sends a still image attached to an E-mail manually. After selecting **Manual**, click **OK**. The SMTP function mode is set to **Manual**. In this mode, when you click the  (Trigger) button on the main viewer page, a still image is captured and sent via an E-mail. (See “Controlling the Application Manually” on page 12.)

Alarm: Sends a still image via an E-mail by synchronizing with an external sensor input or the built-in activity detection function. When you select **Alarm**, the Alarm mode setting section appears (see page 32).

Periodical sending: Sends a still image via an E-mail periodically. When you select **Periodical sending**, the Periodical sending mode setting section appears (see page 33).

Back/OK

See “Buttons common to every setting page” on page 17.

Alarm mode setting Section

| | | |
|------------------|--|---|
| Alarm | <input checked="" type="checkbox"/> Sensor | |
| | <input type="checkbox"/> Activity detection | <input type="button" value="Activity detection"/> |
| Available period | <input checked="" type="radio"/> Always <input type="radio"/> Use scheduler | |
| Schedule No. | <input checked="" type="checkbox"/> 1 <input type="checkbox"/> 2 <input type="checkbox"/> 3 <input type="checkbox"/> 4 <input type="checkbox"/> 5 <input type="checkbox"/> 6 | <input type="button" value="Schedule check"/> |
| | | <input type="button" value="Back"/> <input type="button" value="OK"/> |

Alarm

Select the alarm to link the SMTP function. If the selected alarm is detected, a still image is captured and sent via an E-mail.

Sensor: External sensor connected to sensor input of the camera I/O port

Activity detection: The activity detection function built in the camera.

To set the activity detection function, click **Activity detection**. The Activity detection setting page appears (see page 40).

Note

The image that can be attached to an E-mail is the one captured at the moment when an alarm is input. If the next alarm occurs while the captured image is being processed, that alarm is ignored.

Available period

Select the period for which the alarm mode is available.

Always: The alarm mode is available any time.

Use scheduler: The alarm mode is available according to the schedule selected on the Schedule No. menu below.

Schedule No.

When **Use scheduler** is selected on the Available period menu, select the schedule you want the alarm mode being available.

Click to select the check box(es) **1** to **6**. You can select multiple schedules.

To check the contents of schedules, click **Schedule check**. (See “Setting the Schedule — Schedule setting Page” on page 39.)

Periodical sending mode setting Section

| | |
|---|--|
| Interval time | 01 H 00 M (More than 30 min) |
| Available period | <input checked="" type="radio"/> Always <input type="radio"/> Use scheduler |
| Schedule No. | <input checked="" type="checkbox"/> 1 <input type="checkbox"/> 2 <input type="checkbox"/> 3 <input type="checkbox"/> 4 <input type="checkbox"/> 5 <input type="checkbox"/> 6 <input type="button" value="Schedule check"/> |
| <input type="button" value="Back"/> <input type="button" value="OK"/> | |

Interval time

Type the interval at which you want to send an E-mail with a still image periodically. You can set the hour (H) and minutes (M) between 30 minutes and 24 hours (one day).

Available period

Select the period for which the periodical sending mode is available.

Always: The periodical sending mode is available any time.

Use scheduler: The periodical sending mode is available according to the schedule selected on the Schedule No. menu below.

Schedule No.

When **Use scheduler** is selected on the Available period menu, select the schedule you want the periodical sending mode being available.

Click to select the check box(es) **1** to **6**. You can select multiple schedules.

To check the contents of schedules, click **Schedule check**. (See “Setting the Schedule — Schedule setting Page” on page 39.)

Setting the Alarm Out 1 or 2

— Alarm out 1 or 2 setting Page

When you click **Alarm out 1** on the Administrator menu, the Alarm out 1 setting page appears. When you click **Alarm out 2** on the Administrator menu, the Alarm out 2 setting page appears.

Use these pages to set up for the Alarm out function that controls the alarm out 1 or alarm out 2 of the I/O port located on the rear the camera. You can control the alarm out when a trigger occurs by an external sensor input, the built-in activity detection function, a manual trigger button or the timer.

The setting items for alarm out 1 and alarm out 2 are the same. This section explains how to set alarm out 1 as an example.

Activating/Deactivating the Alarm Out 1 Function

— Alarm out 1 usage setting Page

| | |
|---|--|
| Alarm out 1 usage setting | |
| <input type="radio"/> Use alarm out 1 function | |
| <input checked="" type="radio"/> Do not use alarm out 1 function | |
| <input type="button" value="OK"/> <input type="button" value="Cancel"/> | |

To activate the Alarm out 1 function, select **Use alarm out 1 function** and click **OK**. The Alarm out 1 setting page appears.

When you do not use the Alarm out 1 function, select **Do not use alarm out 1 function** and click **OK**.

Setting the Alarm Out 1 Function


— Alarm out 1 setting Page

| | |
|---|---|
| Alarm out 1 setting | |
| Mode | <input checked="" type="radio"/> Manual <input type="radio"/> Alarm <input type="radio"/> Timer |
| <input type="button" value="Back"/> <input type="button" value="OK"/> | |

Mode

Select the mode of the Alarm out 1 function.

Manual: Controls the alarm out 1 manually.

In this mode, you can short-circuit and open the alarm out 1 by clicking the  (Trigger) button on the main viewer page. (See “Controlling the Application Manually” on page 12.)

Alarm: Controls alarm out 1 by synchronizing with an external sensor input or the built-in activity detection function. When you select **Alarm**, the Alarm mode setting section appears (see page 34).

Timer: Controls alarm out 1 by the timer. When you select **Timer**, the Timer mode setting section appears (see page 34).

Alarm mode setting Section

| | | |
|------------------|--|--------------------|
| Alarm | <input checked="" type="checkbox"/> Sensor <input type="checkbox"/> Activity detection | Activity detection |
| Available period | <input checked="" type="radio"/> Always <input type="radio"/> Use scheduler | |
| Schedule No. | <input checked="" type="checkbox"/> 1 <input type="checkbox"/> 2 <input type="checkbox"/> 3 <input type="checkbox"/> 4 <input type="checkbox"/> 5 <input type="checkbox"/> 6 | Schedule check |
| Alarm duration | 1 | |
| Back OK | | |

Alarm

Select the alarm to link the alarm out 1 function. If the selected alarm is detected, the alarm out 1 status changes.

Sensor: External sensor connected to sensor input of the camera I/O port

Activity detection: The activity detection function built in the camera.

To set the activity detection function, click **Activity detection**. The Activity detection setting page appears (see page 40).

Available period

Select the period for which the alarm mode is available.

Always: The alarm mode is available any time.

Use scheduler: The alarm mode is available according to the schedule selected on the Schedule No. menu below.

Schedule No.

When **Use scheduler** is selected on the Available period menu, select the schedule you want the alarm mode being available.

Click to select the check box(es) **1** to **6**. You can select multiple schedules.

To check the contents of schedules, click **Schedule check**. (See “Setting the Schedule — Schedule setting Page” on page 39.)

Alarm duration

Select the duration for which the alarm output is short-circuited between 1 and 60 sec.

Timer mode setting Section

| | | |
|--------------|--|----------------|
| Schedule No. | <input checked="" type="checkbox"/> 1 <input type="checkbox"/> 2 <input type="checkbox"/> 3 <input type="checkbox"/> 4 <input type="checkbox"/> 5 <input type="checkbox"/> 6 | Schedule check |
| Back OK | | |

Schedule No.

Select the schedule you want to activate the alarm out 1 timer mode.

Click to select the check box(es) **1** to **6**. You can select multiple schedules.

The alarm out 1 is short-circuited at the start time of the selected schedule, and it switches to open at the end time.

To check the contents of schedules, click **Schedule check**. (See “Setting the Schedule — Schedule setting Page” on page 39.)

Recording Images in Memory

— Image memory setting Page

When you click **Image memory** on the Administrator menu, the Image memory setting page appears. Use this page to set up for the image memory function which captures a still image and records it in the built-in memory of the camera (about 8 MB). You can capture a still image at the moment when a trigger occurs by an external sensor input, the built-in activity detection function or a manual trigger button. The captured still image is recorded in the built-in memory. You can also record a still image periodically. The recorded image file can be found or downloaded to the computer using the FTP server function. (See “Downloading Images from the Camera — FTP server setting Page” on page 30.)

Activating/Deactivating the Image Memory Function — Image memory usage setting Page

Built-in memory

Displays the free space of the built-in memory of the camera.

Use image memory function/Do not use image memory function

To activate the Image memory function, select **Use image memory function** and click **OK**. The Image memory setting page appears. When you do not use the Image memory function, select **Do not use image memory function** and click **OK**.

Notes

- The image recorded in the built-in memory will be erased when the power of the camera is turned off.
- The frame rate and operability on the main viewer page may decrease during image storage.
- The image memory function cannot be activated if the Backup sending mode menu is set to **On**. To use the image memory function, set the Backup sending mode menu to **Off**.

Recording an Image in the Memory — Image memory setting Page

Image file name

Type the basic file name you want to assign to the images when saving in the memory. You can use up to 6 alphanumeric, - (hyphen) and _ (underscore) for naming.

Suffix

Select the suffix to add to the file name.

None: No suffix is added. The basic file name is assigned to the image to be recorded in memory.

Date/Time: The date/time suffix is added to the file name.

The date/timer suffix consists of lower two-digits of year (2 digits), month (2 digits), date (2 digits), hour (2 digits), minute (2 digits), second (2 digits) and consecutive number (2 digits), thus 14-digit number is added to the file name.

Sequence number: A consecutive number of 10 digits between 0000000000 and 4294967295 is added to the basic file name.

Tip

When the Mode menu is set to **Alarm**, the type of alarm and the capture timing to the alarm are added to the suffix.

Type of alarm: **S1** (Sensor), **AD** (Activity Detection)
 Capture timing: **PR** (Pre-alarm), **JT** (Just alarm), **PT** (Post-alarm)

Sequence No. clear

Click **Apply** to reset the Sequence number suffix to 0.

Overwrite

Select if you overwrite the file or not when there is insufficient memory space to record the image. Select **On** to allow overwriting. The oldest file or folder is overwritten first. Select **Off** to prohibit overwriting. In this case, a new file cannot be stored.

Capacity warning

Select **On** to send a warning mail to the Administrator when the built-in memory space is low or the memory is full due to activation of the image memory function. Select **Off** if you do not want to send a warning mail. If **On** is selected, the SMTP server name and Administrator e-mail address menus appear.

SMTP server name


Type the name or IP address of the SMTP server you want to use for sending the E-mail, up to 64 characters.

Administrator e-mail address

Type the E-mail address of the recipient of the warning mail (E-mail address of the Administrator), up to 64 characters.

Mode

Select the mode of the Image memory function.

Manual: Records a still image in the memory manually. In this mode, when you click the  (Trigger) button on the main viewer page, a still image is captured and recorded in the memory. (See “Controlling the Application Manually” on page 12.)

Alarm: Records a still image in the memory by synchronizing with an external sensor input or the built-in activity detection function. When you select **Alarm**, the Alarm mode setting section appears (see page 36).

Note

If the Suffix menu is set to **None**, you cannot select the **Alarm** mode. When you want to use the Alarm mode, set the Suffix menu to **Date/Time** or **Sequence number**.

Periodical recording: Records still images in the memory periodically. When you select **Periodical recording**, the Periodical recording mode setting section appears (see page 37).

Alarm mode setting Section

| | | |
|---|--|---|
| Alarm | <input checked="" type="checkbox"/> Sensor <input type="checkbox"/> Activity detection | <input type="button" value="Activity detection"/> |
| Available period | <input checked="" type="radio"/> Always <input type="radio"/> Use scheduler | |
| Schedule No. | <input checked="" type="checkbox"/> 1 <input type="checkbox"/> 2 <input type="checkbox"/> 3 <input type="checkbox"/> 4 <input type="checkbox"/> 5 <input type="checkbox"/> 6 | <input type="button" value="Schedule check"/> |
| Alarm buffer configuration | <input type="button" value="Alarm buffer"/> | |
| Digest viewer | <input checked="" type="radio"/> On <input type="radio"/> Off | |
| <input type="button" value="Back"/> <input type="button" value="OK"/> | | |

Alarm

Select the alarm to link the Image memory function. If the selected alarm is detected, a still image is captured and recorded in the selected memory.

Sensor: External sensor connected to sensor input of the camera I/O port

Activity detection: The activity detection function built in the camera.

To set the activity detection function, click **Activity detection**. The Activity detection setting page appears (see page 40).

Available period

Select the period for which the alarm mode is available.

Always: The alarm mode is available any time.

Use scheduler: The alarm mode is available according to the schedule selected in the Schedule No. menu below.

Schedule No.

When **Use scheduler** is selected on the Available period menu, select the schedule you want the alarm mode being available.

Click to select the check box(es) **1** to **6**. You can select multiple schedules.

To check the contents of schedules, click **Schedule check**. (See “Setting the Schedule — Schedule setting Page” on page 39.)

Alarm buffer configuration

Click **Alarm buffer** to display the Alarm buffer setting page.

For details, see “Setting the Alarm Buffer — Alarm buffer setting Page” on page 38.

Note

If an alarm occurs during the Alarm buffer processing, that alarm is ignored.

Digest viewer

If you select **On**, an HTML file (.html) and a Java Script file (.js) are added each time the selected alarm is detected.

When you open the added HTML file using a general browser, the digest viewer runs and you can view the still pictures in the alarm buffer in sequence (quasi-animation).

See “Operating the Digest Viewer” on page 29.

Periodical recording mode setting Section

| | |
|---|--|
| Interval time | 00 H 10 M 00 S |
| Available period | <input checked="" type="radio"/> Always <input type="radio"/> Use Scheduler |
| Schedule No. | <input checked="" type="checkbox"/> 1 <input type="checkbox"/> 2 <input type="checkbox"/> 3 <input type="checkbox"/> 4 <input type="checkbox"/> 5 <input type="checkbox"/> 6 <input type="button" value="Schedule check"/> |
| Digest viewer | <input type="radio"/> On <input checked="" type="radio"/> Off |
| <input type="button" value="Back"/> <input type="button" value="OK"/> | |

Interval time

Type the interval at which you want to record an image periodically. You can set the hour (H), minutes (M) and seconds (S) between 1 second and 24 hours (one day).

Note

The actual interval may be longer than the set value, depending on the image size.

Available period

Select the period for which the periodical recording mode is available.

Always: The periodical recording mode is available any time.

Use scheduler: The periodical recording mode is available according to the schedule selected in the Schedule No. menu below.

Schedule No.

When **Use scheduler** is selected on the Available period menu, select the schedule you want the periodical recording mode being available.

Click to select the check box(es) **1** to **6**. You can select multiple schedules.

To check the contents of schedules, click **Schedule check**. (See “Setting the Schedule — Schedule setting Page” on page 39.)

Digest viewer

If you select **On**, an HTML file (.html) and a Java Script file (.js) are added every 100 files.

When you open the added HTML file using a general browser, the digest viewer runs and you can view the still pictures in the alarm buffer in sequence (quasi-animation).

See “Operating the Digest Viewer” on page 29.

Note

If the Suffix menu is set to **None**, you cannot select **On**. When you want to use the digest viewer, set the Suffix menu to **Date/Time** or **Sequence number**.

Back/OK

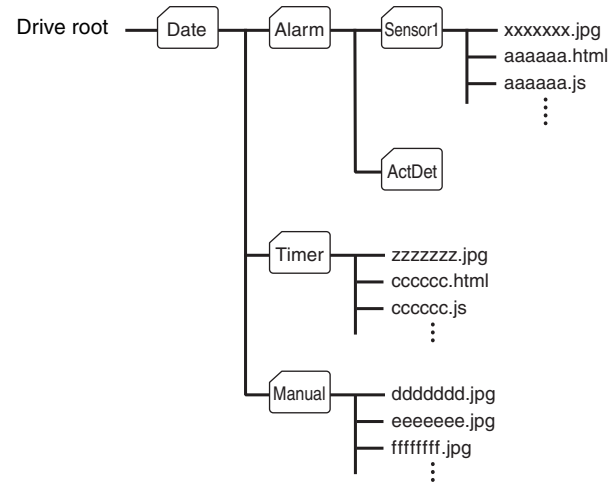
See “Buttons common to every setting page” on page 17.

Directory Structure of Image Memory

The images are recorded in the memory with the following directory structure.

Built-in memory: Drive C

Drive C has the following directory structure.



A represents a folder created automatically. The Date folder has a 6-digit folder name consisting of the lower two digits of year (2 digits), month (2 digits) and date (2 digits). The Sensor, and Act Det (activity detection) folders correspond to alarm modes. The Timer folder corresponds to the periodical recording mode. And, the Manual folder corresponds to the manual mode.

JPEG image files are stored in each folder. If the digest viewer is allowed, an HTML file (.html) and a Java Script file (.js) are created automatically at the time of each alarm event. For the periodical recording mode, an HTML file (.html) and a Java Script file (.js) are created automatically every 100 JPEG image files.

Setting the Alarm Buffer

— Alarm buffer setting Page

When you click **Alarm buffer** on the Administrator menu, the Alarm buffer Setting page appears. Use this page to set up for the alarm buffer used in the FTP client function (see page 27) and the Image memory function (see page 35).

| Alarm buffer setting | |
|---|---------|
| Recording interval | 1/5 sec |
| Pre-alarm images | 10 |
| Post-alarm images | 10 |
| Maximum alarm images | 654 |
| <input type="button" value="OK"/> <input type="button" value="Cancel"/> | |

Recording interval

Select the interval (in seconds) at which you want to record an image in the alarm buffer.

You can select from among the following intervals:
SNC-CS3N:

1/30, 1/15, 1/10, 1/5, 1/2, 1, 2, 3, 4, 5, 6, 7, 8, 9, 10
(seconds)

SNC-CS3P:

1/25, 1/12, 1/8, 1/5, 1/2, 1, 2, 3, 4, 5, 6, 7, 8, 9, 10
(seconds)

Pre-alarm images

Type the number of images to be recorded before detecting an alarm (Pre-alarm).

Post-alarm images

Type the number of images to be recorded after detecting an alarm (Post-alarm).

Maximum alarm images

Displays the maximum number of images that can be recorded in the alarm buffer with the current image size and image quality.

Note

The number of Maximum alarm images differs depending on the Image size and Image quality settings on the Camera setting page.

Check the Maximum alarm images setting and set so that the total number of Pre-alarm images and Post-alarm images does not exceed the Maximum alarm images.

If you set both Pre-alarm images and Post-alarm images to **0**, only one image is recorded at the moment when an alarm is detected.

OK/Cancel

See “Buttons common to every setting page” on page 17.

Communicating Data via Serial Port

— Serial setting Page

When you click **Serial** on the Administrator menu, the Serial setting page appears.

Use this page to set up for the data communication via the serial interface. You can input data from a computer via the network to the camera, and output it to an external serial interface for controlling a peripheral device, or, vice versa, input data from a peripheral device to the camera via the external serial interface and output it to the computer via the network.

Perform the setting to match the peripheral device you connect to the camera.

The external serial interface of this camera conforms to RS-232C standards.

| Serial setting | |
|---|---|
| Mode | <input type="radio"/> HTTP <input checked="" type="radio"/> TCP |
| TCP port No. | 40000 (1024 to 65535) |
| Baud rate | 9600 bps |
| Parity bit | none |
| Character length | 8 bits |
| Stop bits | 1 bits |
| <input type="button" value="OK"/> <input type="button" value="Cancel"/> | |

Mode

Select the port through which you send and receive data via the network: **HTTP** (HTTP Generic Driver) or **TCP** (TCP Generic Driver).

HTTP: When you select **HTTP**, you can realize data communication by creating an HTML program with CGI commands embedded in the computer. For the CGI commands, consult your authorized Sony dealer.

TCP: When you select **TCP**, specify the TCP port number on the TCP Port No. menu, and you can send and receive data that is input to or output from the external serial communication port. You can check the connection to the camera using a DOS command “telnet [host name] [assigned port number]”.

TCP port No.

When you select **TCP** on the Mode menu, type the port number for the TCP port (TCP Generic Driver). Set a port number other than Well-Known port numbers (0 to 1023).

Baud rate

Select the communication baud rate for the peripheral device connected to the serial interface. You can select from among the following baud rates:

38400, 19200, 9600, 4800, 2400, 1200, 600, 300 (bps)

Parity bit

Select the parity bit for the peripheral device connected to the serial interface: **None, Odd** or **Even**.

Character length

Select the character length for the peripheral device connected to the serial interface: **7** or **8** (bits).

Stop bits

Select the stop bit for the peripheral device connected to the serial interface: **1** or **2** (bits).

OK/Cancel

See “Buttons common to every setting page” on page 17.

Setting the Schedule

— Schedule setting Page

When you click **Schedule** on the Administrator menu, the Schedule setting page appears.

Use this page to set up to six schedules used for the FTP client function, SMTP function, Alarm out 1 or 2 function and Image memory function.

| Schedule setting | |
|---|--|
| Schedule No. | Time table (00:00 to 24:00) |
| No. 1 | Start time: 00 H 00 M - End time: 24 H 00 M <input checked="" type="checkbox"/> Mon <input checked="" type="checkbox"/> Tue <input checked="" type="checkbox"/> Wed <input checked="" type="checkbox"/> Thu <input checked="" type="checkbox"/> Fri <input type="checkbox"/> Sat <input type="checkbox"/> Sun |
| No. 2 | Start time: 00 H 00 M - End time: 24 H 00 M <input checked="" type="checkbox"/> Mon <input checked="" type="checkbox"/> Tue <input checked="" type="checkbox"/> Wed <input checked="" type="checkbox"/> Thu <input checked="" type="checkbox"/> Fri <input type="checkbox"/> Sat <input type="checkbox"/> Sun |
| No. 3 | Start time: 00 H 00 M - End time: 24 H 00 M <input checked="" type="checkbox"/> Mon <input checked="" type="checkbox"/> Tue <input checked="" type="checkbox"/> Wed <input checked="" type="checkbox"/> Thu <input checked="" type="checkbox"/> Fri <input type="checkbox"/> Sat <input type="checkbox"/> Sun |
| No. 4 | Start time: 00 H 00 M - End time: 24 H 00 M <input checked="" type="checkbox"/> Mon <input checked="" type="checkbox"/> Tue <input checked="" type="checkbox"/> Wed <input checked="" type="checkbox"/> Thu <input checked="" type="checkbox"/> Fri <input type="checkbox"/> Sat <input type="checkbox"/> Sun |
| No. 5 | Start time: 00 H 00 M - End time: 24 H 00 M <input checked="" type="checkbox"/> Mon <input checked="" type="checkbox"/> Tue <input checked="" type="checkbox"/> Wed <input checked="" type="checkbox"/> Thu <input checked="" type="checkbox"/> Fri <input type="checkbox"/> Sat <input type="checkbox"/> Sun |
| No. 6 | Start time: 00 H 00 M - End time: 24 H 00 M <input checked="" type="checkbox"/> Mon <input checked="" type="checkbox"/> Tue <input checked="" type="checkbox"/> Wed <input checked="" type="checkbox"/> Thu <input checked="" type="checkbox"/> Fri <input type="checkbox"/> Sat <input type="checkbox"/> Sun |
| <input type="button" value="OK"/> <input type="button" value="Cancel"/> | |

Schedule No. 1 to Schedule No. 6

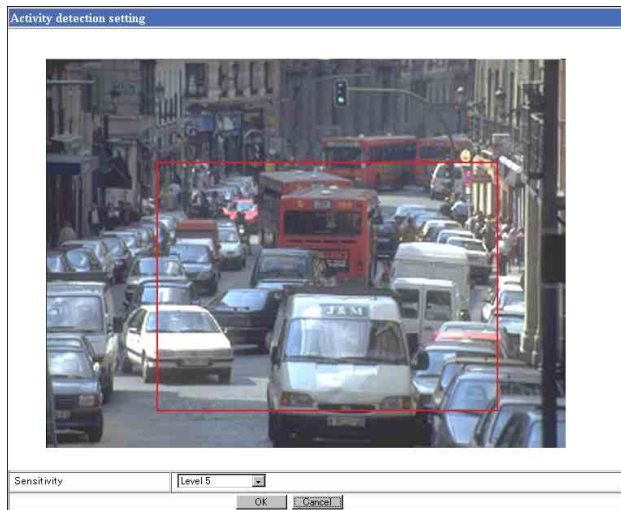
For each schedule, specify Start time (hour and minutes) and End time (hour and minutes), and check the days of the week that you want to activate the function.

OK/Cancel

See “Buttons common to every setting page” on page 17.

Setting the Activity Detection Function — Activity detection setting Page

When you click **Activity detection** on the Administrator menu, the Activity detection setting page appears. Use this page to set up for the activity detection to link various applications.



Sensitivity

Select the sensitivity of the activity detection from the drop-down list. You can select the sensitivity between **Level 1** and **Level 9**. **Level 9** is the maximum sensitivity.

Tip

The Sensitivity of the activity detection means a proportion of the changed area (pixels) to the whole activity detection area.

OK/Cancel

See “Buttons common to every setting page” on page 17.

Setting the Activity Detection Area

Set the activity detection working area as follows:

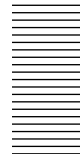
- 1** Determine the view angle of the camera at which you want to perform activity detection, using the zoom.
- 2** Click **Activity detection** on the Administrator menu. A still picture is captured and the Activity detection setting page appears.
- 3** Hold down the mouse left button and drag it diagonally. The portion marked with a red frame determines the activity detection working area. As the default setting, the whole area is set as the activity detection working area.

Note

Before using the activity detection, perform the operation test to confirm correct operation.

The activity detection may not operate correctly in the following cases:

- while changing a setting on the Camera setting page
- when the object is dark
- when the camera is installed in an unstable place that causes vibration to the camera



Showing the Pop-up

— Pop-up setting Page

When you click **Pop-up** on the Administrator menu, the Pop-up setting page appears.

Use this page to set up for displaying a pop-up with your favorite message on the computers monitoring the camera image, or for displaying a pop-up automatically when there is an alarm input.

| Pop-up setting | |
|--------------------------|---|
| Manual pop-up text | |
| Information from SNC-CS3 | Apply |
| Alarm pop-up text | |
| Display mode | <input checked="" type="radio"/> Administrator <input type="radio"/> All users |
| Sensor | <input type="radio"/> On <input checked="" type="radio"/> Off <input type="text" value="Sensor Input"/> |
| Activity detection | <input type="radio"/> On <input checked="" type="radio"/> Off <input type="text" value="Activity Detection Input"/> |
| OK Cancel | |

Manual pop-up text

Type the text to be displayed on a pop-up between 1 and 64 characters.

Click **Apply** to display the pop-up on all the computers monitoring the camera.

Alarm pop-up text

Display mode

Select the computer on which you want to display a pop-up when an alarm is input.

Administrator: The pop-up is displayed only on the computer monitoring the camera image as the Administrator.

All users: The pop-up is displayed on all the computers monitoring the camera image.

Sensor/Activity detection

Select **On** to show a pop-up when an alarm occurs by the each corresponding sensor. Select **Off** not to show it. On each text box, type the text to be displayed on the pop-up between 1 and 64 characters.

OK/Cancel

See “Buttons common to every setting page” on page 17.

Using the Supplied Setup Program

To connect the camera to a network, you need to assign a new IP address to the camera when you installed the camera for the first time.

You can assign an IP address in two ways:

- Using the setup program stored in the supplied CD-ROM (see page 42)
- Using the ARP (Address Resolution Protocol) commands (see page 45)

This section explains how to assign an IP address to the camera using the supplied setup program and configure the network.

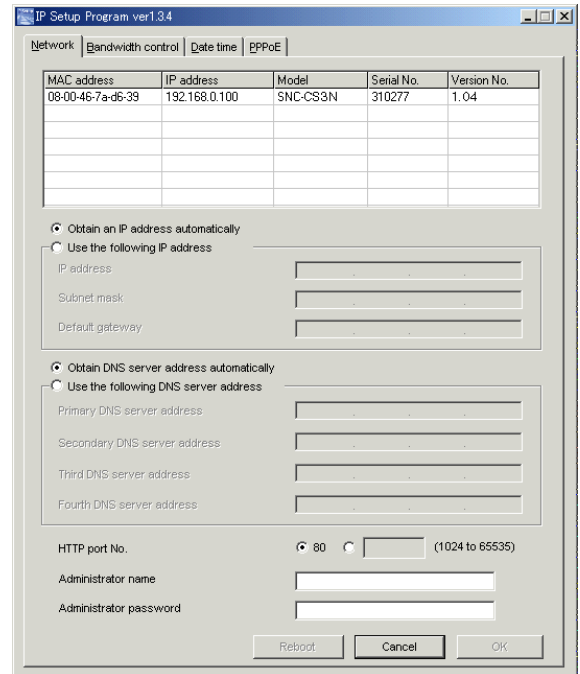
The setup program also allows the communication bandwidth setting and date and time setting.

Before starting, connect the camera to a computer or a local network, referring to “Assigning the IP Address to the Camera” in the supplied Installation Manual.

Assigning the IP Address Using the Setup Program

- 1 Insert the supplied CD-ROM disc into your CD-ROM drive.
- 2 Double-click the Setup folder in the CD-ROM drive.
- 3 Double-click Setup.exe.
- 4 Install the IP Setup Program to your computer following the wizard displayed. If the Software License Agreement is displayed, read it carefully and accept the agreement to continue the installation.

- 5 Start the IP Setup Program. The program detects the SNC-CS3 cameras connected to the local network and lists them on the Network tab window.



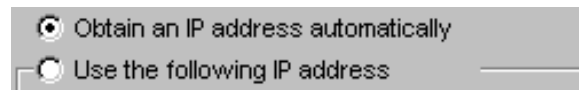
- 6 Click on the camera you want to assign a new IP address in the list. The network settings for the selected camera are displayed.

| MAC address | IP address | Model | Serial No. | Version No. |
|-------------------|---------------|----------|------------|-------------|
| 08-00-46-7a-d6-39 | 192.168.0.100 | SNC-CS3N | 310277 | 1.04 |
| | | | | |
| | | | | |
| | | | | |

- 7 Set the IP address.

To obtain the IP address automatically from a DHCP server:

Select **Obtain an IP address automatically**.



The IP address, Subnet mask and Default gateway are assigned automatically.

To specify the IP address manually:
 Select **Use the following IP address**, and type the IP address, Subnet mask and Default gateway in each box.

8 Set the DNS server address.

To obtain the DNS server addresses automatically:
 Select **Obtain DNS server address automatically**.

To specify the DNS server addresses manually:
 Select **Use the following DNS server address**, and type the Primary DNS server address and Secondary DNS server address in each box.

Note

The Third DNS server address and Fourth DNS server address are invalid for this camera.

9 Set the HTTP port number.

Normally select **80** for the HTTP port number. To use another port number, select the text box and type a port number between 1024 and 65535.

10 Type the Administrator name and Administrator password.

The default settings of both items are “admin.”

Note

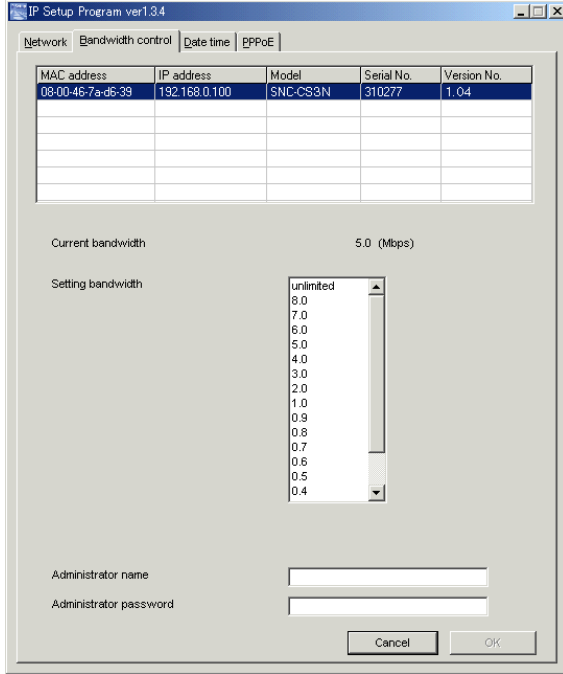
You cannot change the Administrator name and Administrator password in this step. To change these items, See “Setting the User — User setting Page” on page 25.

11 Confirm that all items are correctly set, then click **OK**.

If “Setting OK” is displayed, the IP address is correctly assigned.

Changing the Communication Bandwidth

- 1 Click the Bandwidth control tab to display the bandwidth setting window. The current bandwidth is displayed in **Current bandwidth**.

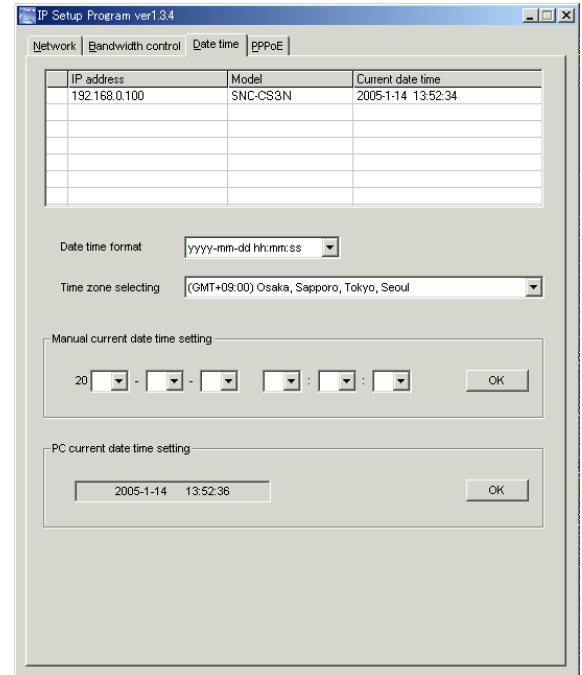


- 2 Click to select the desired bandwidth from the Setting bandwidth list box.
- 3 Type the Administrator name and Administrator password in each box.
- 4 Click **OK**.
If "Setting OK" is displayed, the bandwidth setting is completed.

Setting the Date and Time

You can set the date and time on the camera.

- 1 Click the Date time tab to display the date/time setting window.



- 2 Click to select the camera you want to set the date and time for.
You can select multiple cameras and set the date and time simultaneously.
- 3 Select the date/time format from the Date time format drop-down list.
- 4 Select the area where the camera is installed from the Time zone selecting drop-down list.
- 5 Set the date and time.
You can set the date and time in two ways.

Manual setting

Set the current date and time on the Manual current date time setting boxes, and click **OK**. The setting boxes are for the year (lower two digits), month, date, hour, minutes and seconds from left to right.

Using the computer's date and time

The date and time set on the computer is displayed in the PC current date time setting box.

Click **OK** on the right to set the camera's date and time to the displayed computer's date and time.

Note

Due to the network properties, there may be a slight difference between the displayed computer's date and time and those set on the camera.

Rebooting the Camera

Click **Reboot** on the Network tab to reboot the camera. It will take about 10 to 20 seconds to reboot.

Assigning the IP Address to the Camera Using ARP Commands

This section explains how to assign an IP address to the camera using ARP (Address Resolution Protocol) commands without using the supplied setup program.

Note

Enter the ARP commands within 5 minutes after the power of the camera is turned on.

- 1 Open the DOS window on the computer.
- 2 Enter the IP address and the MAC address of the camera you want assign a new IP address to, using the following ARP commands.

```
arp -s <Camera's IP address> <Camera's MAC address>  
ping -t <Camera's IP address>
```

Example:

```
arp -s 192.168.0.100 08-00-46-21-00-00  
ping -t 192.168.0.100
```

- 3 When the following line is displayed on the DOS window, hold down **Ctrl** and press **C**.

```
Reply from 192.168.0.100:bytes=32 time...
```

You will normally receive the reply after about 5 repetitions of "Request time out."

Note

- If you do not receive the reply, check the following:
- Did you enter the ARP commands within 5 minutes after the camera was turned on?
If not, turn off the camera and restart the operation.
 - Is the NETWORK indicator on the camera flashing?
If the indicator goes off, the network connection has a problem. Connect the network correctly.
 - Did you enter the IP address previously used for another device?
Assign a new IP address to the camera.
 - Do the computer and the camera have the same network address?
If not, set the same network address on the computer and the camera.

Using the SNMP

This unit supports SNMP (Simple Network Management Protocol). You can read MIB-2 objects and write some MIB-2 objects using software such as SNMP manager software. This unit also supports the coldStart trap which occurs when the power is turned on or the unit restarts, and the Authentication failure trap which informs of an illegal access using SNMP. Using CGI commands, you can set community name and access limitation, reading/writing right, host to send traps, and some MIB-2 objects. To allow these settings, you need Level 4 authentication (the right to open the setting pages).

1. Inquiry Commands

You can check the SNMP Agent settings using the following CGI commands.

```
<Method>
  GET, POST
<Command>
  "http://ip_adr/snmpdconf/inquiry.cgi?inqjs=snmp
  (JavaScript parameter format)
  http://ip_adr/snmpdconf/inquiry.cgi?inq=snmp
  (standard format)
```

With the above inquiry, you can obtain the following setting information. The following explains the setting information using the inqjs=snmp (JavaScript parameter) format.

```
var sysDescr="\SONY Network Camera SNC-
CS3\\"" ...①
var sysObjectID="1.3.6.1.4.1.122.8501" ...②
var sysLocation="\\" ...③
var sysContact="\\" ...④
var sysName="\\" ...⑤
var snmpEnableAuthenTraps="1" ...⑥
var community="public,0.0.0.0,read,1" ...⑦
var community="private,192.168.0.101,write,2" ...⑧
var trap="public,192.168.0.101.1" ...⑨
```

- ① describes the instance of “mib-2.system.sysDescr.0”. You cannot change this parameter.
- ② describes the instance of “mib-2.system.sysObjectID.0”. You cannot change this parameter.
- ③ describes the instance of “mib-2.system.sysLocation.0”. This field is used to describe the information on the location of this camera. Nothing is set at the factory.

- ④ describes the instance of “mib-2.system.sysContact.0”. This field is used to describe the information on the administrator of this camera. Nothing is set at the factory.
- ⑤ describes the instance of “mib-2.system.sysName.0”. This field is used to describe the administration node of this camera. Nothing is set at the factory.
- ⑥ describes the instance of “mib-2.snmpEnableAuthenTraps.0”. This example shows when “1” (enable) is set. With this setting, a trap occurs when there is an Authentication failure. When “2” (disable) is set, no Authentication failure trap occurs.
- ⑦ describes the community name and the reading/writing attributes. This example shows the identification number “ID=1”, the community name public, and enables read from any IP address (0.0.0.0).
- ⑧ describes the community name and the reading/writing attributes, similarly to ⑦. This example shows the identification number ID=2, the community name “private”, and enables “read/write” by the SNMP request packet from the host “192.168.0.101”.
- ⑨ describes the host name to send a trap. This example shows the identification number “ID=1”, the community name “public”, and enables sending of traps to the host having the IP address “192.168.0.101”.

2. Setting Commands

The unit supports the following setting commands of SNMP.

```
<Method>
  GET, POST
<Command>
  http://ip_adr/snmpdconf/snmpdconf.cgi?
  <parameter>=<value>&<parameter>=...&...
```

First, perform the settings of the following parameters.

- 1) sysLocation=<string>
Set the instance of “mib-2.system.sysLocation.0” in the <string> position. The maximum length of <string> is 255 characters.
- 2) sysContact=<string>
Set the instance of “mib-2.system.sysContact.0” in

the <string> position. The maximum length of <string> is 255 characters.

- 3) sysName=<string>
Set the instance of “mib-2.system.sysName.0” in the <string> position. The maximum length of <string> is 255 characters.
- 4) enaAuthTraps=<value>
Set the instance value of “mib-2.snmp.snmp EnableAuthenTraps.0” in the <string> position. Type “1” (enable) or “2” (disable) in the <value> position.
- 5) community=<ID>,<rwAttr>,<communityName>,<IpAddressString>
Set the community name and the reading/writing attributes. <ID> describes the setting identification number (1 to 8), <rwAttr> describes a character representing the reading/writing attribute (“r”, “R”, “w or “W”), <communityName> describes the community name to be set, and <IpAddressString> describes the IP address of the host you allow the access (0.0.0.0 for any host).
Example: To allow reading/writing any host in the “private” community and having the ID number “2”.
community=2,w,private,0.0.0.0
- 6) trap=<ID>,<communityName>,<IpAddressString>
Set the host you want to send traps to. <ID> describes the setting identification number (1 to 8), <communityName> describes the community name to send traps to, and <IpAddressString> describes the IP address of the host to send traps to.
Example: To specify the destination of traps as the private community and the ID number “1”.
rap=1,public,196.168.0.101
- 7) delcommunity=<ID>
This parameter is used to delete the previous community setting. <ID> describes the community setting identification number (1 to 8).
- 8) deltrap=<ID>
This parameter is used to delete the previous setting of the host to send traps to. <ID> describes the trap setting identification number (1 to 8).

When you have finished changing the SNMP setting information, check the changed settings using an inquiry command. If the changed settings are OK, restart the SNMP using the following CGI command. Be careful that by entering the command, the camera enters the restart mode.

SNMP restart command

<Method>

GET, POST

<Command>

http://ip_adr/snmpdconf/snmpdconf.cgi?

snmpd=restart

Storing an HTML File in the Built-in Flash Memory

You can display the favorite homepage that you have created when you enter the IP address of the camera in the Address box of the browser.

This section explains how to store the HTML file of the homepage created using the CGI commands in the built-in flash memory.

To select the display of the created homepage, see “Default URL” on page 18.

Notes

- **Administrator** access rights are required for this operation.
- The file size of the homepage to be stored in the flash memory should be 2.4 MB or less.
- The free space of the built-in memory should be 2.5 MB or more.
- Disable the Image memory function (page 35).
- Make sure that a firewall, etc. is not blocking the HTTP port and FTP port. (If you are not sure, consult your network administrator.)
- When you finish storing in the flash memory, the camera will restart automatically. Do not turn off the power of the camera until the camera has restarted completely.

- 1 Insert the supplied CD-ROM disc into your CD-ROM drive.
- 2 Double-click the Homepage folder in the CD-ROM drive.
- 3 Double-click CustomHomepageInstaller.exe. The installer starts and notes are displayed.
- 4 Read the notes carefully, and click **Next**. The Software License Agreement is displayed.

- 5 Read the agreement carefully, select **Agree** if you accept it, then click **Next**.

- 6 Type the IP address of the camera in the IP address box.
- 7 Specify the HTTP port No. of the camera.
- 8 When you use a proxy server, set the following:
For the proxy server of your environments, consult your network administrator.

When using an HTTP proxy server:

Select **Use HTTP proxy server**, and type your settings in the Proxy server address and Proxy server port No. boxes.

When using an FTP proxy server:

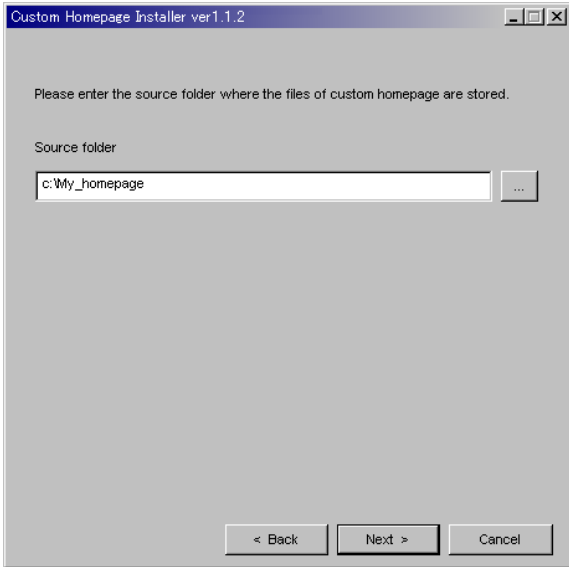
Select **Use FTP proxy server**, and type your settings in the Proxy server address and Proxy server port No. boxes.

Note

If you cannot establish communication with the camera with the proxy server being used, connect the camera to the local network and run the installer without using the proxy server.

- 9 Type the Administrator name and Administrator password.

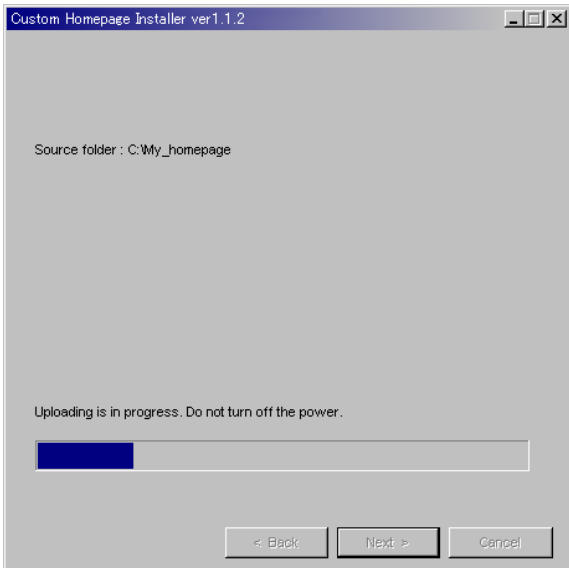
10 Confirm that all items are correct, then click **Next**.



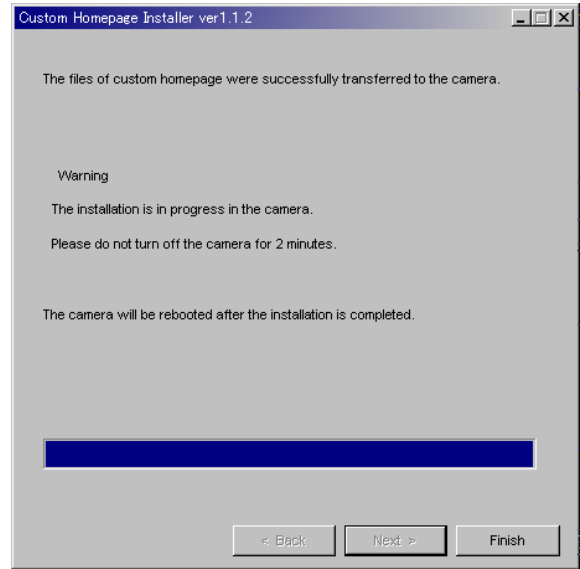
11 Type the path for the folder in which your homepage is stored in the Source folder box, then click **Next**.



12 Click **OK**.
Uploading of the homepage file starts.



The following page will appear after a while. The camera will be restarted automatically in two minutes, and storing to the built-in flash memory is completed.



13 Click **Finish** to exit the program.

Index

A

access log 18
access right 25
ActiveX viewer..... 9
activity detection function 40
administrator 8
administrator menu page 16
alarm..... 28, 32, 34, 36
alarm buffer 38
alarm out..... 33
alarm output 12
application menu 16
Apply button..... 17
ARP commands..... 45

B

Back button 17
backlight compensation..... 21
backup 29
basic menu..... 16
baud rate 39
built-in memory..... 12

C

camera setting..... 20
Cancel button..... 17
capture 13
CGI commands..... 18, 46, 48
character length 39
color..... 20
common buttons 17
communication bandwidth 23, 44
contrast 22
Custom Homepage Installer..... 18, 48

D

date and time 18, 44
default gateway..... 22
DHCP 22
digest viewer 29
DNS server 23
downloading images..... 30

E

electronic shutter 21
E-mail 12, 31
E-mail address 23
e-mail address..... 23
exposure..... 21

F

factory settings 19
flash memory 18, 48
For the customers in the U.S.A. 2
format of date and time 19
frame rate..... 10, 11, 18
FTP client function..... 27
FTP server 12, 27
FTP server function..... 30

G

gain 22

H

HTML file 48
HTTP 24, 38
HTTP server 23

I

image control section ... 10, 11, 12, 15
image memory function 35
image quality 20
image size..... 10, 20
Internet Explorer 8
IP address 8, 22, 42
IP address notification..... 23

J

Java applet viewer 9

L

loading the setting data..... 19
logging in..... 8
login page 8

M

MAC address 22
main viewer page..... 10, 15
memory..... 35
menu section..... 10
monitor image section 11, 15

monochrome 20

N

network configuration 22
NTP server..... 19

O

OK button 17
overwrite..... 35

P

parity bit 39
password 25
PDA 14
pocket PC 14
pop-up..... 41
port number 23
post-alarm..... 38
pre-alarm 38
proxy server 24

R

reboot..... 19, 45
recording a still image 12
recording images 35
reset 22

S

saturation 22
saves the setting data 19
schedule 39
security function 26
security setting..... 26
sending a still image 12
sending images 27, 31
sensitivity..... 40
serial number 17
serial port..... 38
setup program 42
sharpness 22
SMTP..... 23
SMTP function 31
SMTP server 23
SNMP 46
software version..... 18
stop bit 39
subject..... 23
subnet mask 22
system configuring 17

T

| | |
|----------------------------|----|
| TCP | 38 |
| TCP port..... | 38 |
| time difference | 18 |
| title | 23 |
| title bar | 17 |
| trigger control parts..... | 12 |
| trimming..... | 20 |

U

| | |
|---------------------------|----|
| URL | 18 |
| user authentication | 25 |
| user name | 25 |
| user setting | 25 |

V

| | |
|----------------|----|
| view size..... | 11 |
| viewer..... | 9 |

W

| | |
|--------------------------|-----------|
| welcome page | 8, 14, 17 |
| white balance mode | 21 |

<http://www.sony.net/>
Sony Corporation

Free Manuals Download Website

<http://myh66.com>

<http://usermanuals.us>

<http://www.somanuals.com>

<http://www.4manuals.cc>

<http://www.manual-lib.com>

<http://www.404manual.com>

<http://www.luxmanual.com>

<http://aubethermostatmanual.com>

Golf course search by state

<http://golfingnear.com>

Email search by domain

<http://emailbydomain.com>

Auto manuals search

<http://auto.somanuals.com>

TV manuals search

<http://tv.somanuals.com>