

Network Camera

User's Guide

Software Version 1.2

IPELA
SNC-P1

Table of Contents

Overview

Features	4
Phenomena Specific CCD Image Sensors	5
How to Use This User's Guide	6
System Requirements	6

Preparation

Assigning the IP Address to the Camera	7
Assigning an IP address using the IP Setup Program	7
When using Windows XP Service Pack 2	9
When using Windows Vista	11
Accessing the Camera Using the Web Browser	13
Basic Configuration by the Administrator	15

Operating the Camera

Administrator and User	16
Logging in to Homepage — Welcome Page	17
Logging in as a User	17
Displaying the setting window for the administrator directly	17
About Viewers	18
Configuration of Main Viewer	19
Main menu	19
Camera Control Section	19
Monitor Image	20
Controlling the Monitor Image	20
Monitoring the camera image	20
Zooming in the monitor image	21
Capturing a Monitor Image	21
Capturing a monitor image	21
Saving the captured image	22
Sending an Image File	22
Sending a Monitor Image via e-Mail	22
Sending a Monitor Image to an FTP Server	22
Recording a Still Image in the Built-in Memory of the Camera	23
Controlling Alarm output	23
Switching TCP/UDP Transmission Mode	24

Administrating the Camera

Basic Operations of Easy mode	25
How to set Easy mode	25
Setting Options of Easy mode	26
Easy mode (e-Mail)	27
Basic Operations of Advanced mode Menu	28
How to set Advanced mode	28
Configuration of Advanced mode Menu	29
Configuring the System — System setting menu	31
System Tab	31
Date & time Tab	31
Initialize Tab	32
System log Tab	33
Access log tab	33
Setting the Camera Image and Audio — Camera setting Menu	34
Common Tab	34
Picture Tab	35
MPEG4 Tab	36
JPEG Tab	37
Reset Tab	37
Configuring the Network — Network setting Menu	38
Network Tab	38
PPPoE Tab - Setting of PPPoE Connection	39
Dynamic IP address notification Tab — Notifying the IP Address	39
Setting the User — User setting Menu	41
Setting the Security — Security setting Menu	42
Sending an Image via mail — e-Mail (SMTP) setting Menu	43
Common Tab — Setting the e-Mail (SMTP) Function	43
Alarm sending Tab — Setting the mail sending mode when detecting the alarm	44
Periodical sending Tab — Setting the periodical mail sending mode	45
Sending Images to FTP Server — FTP client setting Menu	46
Common Tab — Setting the FTP Client Function	46
Alarm sending Tab — Setting the FTP client action when detecting the alarm	47
Periodical sending Tab — Setting the Periodical FTP Client Activity	48
Recording Images in Memory — Image memory setting Menu	49
Common Tab — Setting the Image memory Function	49
Alarm recording Tab — Setting the Image Memory Function when Detecting the Alarm	50
Periodical recording Tab — Setting the Periodical recording mode	51

Folder structure of image memory	51
Downloading Images from the Camera	
— FTP server setting Menu	52
Setting the Alarm Output	
— Alarm output setting Menu	53
Setting the Operations from the Viewer Page	
— Trigger setting Menu	54
Setting the Schedule	
— Schedule setting Menu	55
Setting the Alarm Buffer — Alarm buffer setting Menu	56
Setting the Motion Detection Function	
— Motion detection setting Menu	57
Setting the Motion Detection Area, Sensitivity and Threshold level	57
Using DDNS Service — DDNS Setting Menu .	59

Others

Using the Supplied Setup Program	63
Starting the Setup Program	63
Bandwidth Control Tab	63
Date time Tab	64
PPPoE Tab	64
Rebooting the Camera	65
Using the SNC audio upload tool — Transmitting Audio to Camera	65
Installing the SNC audio upload tool	65
Connecting the Camera to the Computer	66
Using the SNC audio upload tool	66
Using the SNC video player — Playing Video/Audio File Recorded on Camera	71
Downloading the SNC video player	71
Using the SNC video player	71
Using the Custom Homepage Installer	72
Uploading the homepage to the camera using the Custom Homepage Installer	72
Assigning the IP Address to the Camera Using ARP Commands	74
Using the SNMP	75
1. Inquiry Commands	75
2. Setting Commands	75
Glossary	77
Index	79

Overview

- You should keep in mind that the images or audio you are monitoring may be protected by privacy and other legal rights, and the responsibility for making sure you are complying with applicable laws is yours alone.
- Access to the images and audio is protected only by a user name and the password you set up. No further authentication is provided nor should you presume that any other protective filtering is done by the service. Since the service is Internet-based, there is a risk that the image or audio you are monitoring can be viewed or used by a third-party via the network.
- **SONY IS NOT RESPONSIBLE, AND ASSUMES ABSOLUTELY NO LIABILITY TO YOU OR ANYONE ELSE, FOR SERVICE INTERRUPTIONS OR DISCONTINUATIONS OR EVEN SERVICE CANCELLATION. THE SERVICE IS PROVIDED AS-IS, AND SONY DISCLAIMS AND EXCLUDES ALL WARRANTIES, EXPRESS OR IMPLIED, WITH RESPECT TO THE SERVICE INCLUDING, BUT NOT LIMITED TO, ANY OR ALL IMPLIED WARRANTIES OF MERCHANTABILITY, FITNESS FOR A PARTICULAR PURPOSE, OR THAT IT WILL OPERATE ERROR-FREE OR CONTINUOUSLY.**
- Always make a test recording, and verify that it was recorded successfully. **SONY WILL NOT BE LIABLE FOR DAMAGES OF ANY KIND INCLUDING, BUT NOT LIMITED TO, COMPENSATION OR REIMBURSEMENT ON ACCOUNT OF FAILURE OF THIS UNIT OR ITS RECORDING MEDIA, EXTERNAL STORAGE SYSTEMS OR ANY OTHER MEDIA OR STORAGE SYSTEMS TO RECORD CONTENT OF ANY TYPE.**
- Always verify that the unit is operating properly before use. **SONY WILL NOT BE LIABLE FOR DAMAGES OF ANY KIND INCLUDING, BUT NOT LIMITED TO, COMPENSATION OR REIMBURSEMENT ON ACCOUNT OF THE LOSS OF PRESENT OR PROSPECTIVE PROFITS DUE TO FAILURE OF THIS UNIT, EITHER DURING THE WARRANTY PERIOD OR AFTER EXPIRATION OF THE WARRANTY, OR FOR ANY OTHER REASON WHATSOEVER.**
- If you lose data by using this unit, SONY accepts no responsibility for restoration of the data.

Features

The SNC-P1 is a network camera equipped with a built-in Web server.

The camera has the following features:

Monitoring using the Web browser

Real-time monitoring of the image and sound from the camera is possible using the Web browser on the computer.

MPEG4 video compression

MPEG4 video compression allows a smooth streaming of motion pictures with 30 fps (QVGA size). Motion JPEG video streaming is also possible by selecting the JPEG video compression format.

Offering video streaming in VGA size

The 1/4 type CCD supporting VGA offers high-quality video streaming in VGA size. (The frame rate in VGA size is less than 30 fps.)

Built-in microphone

A microphone (monaural) is built in the camera. Also, the built-in microphone jack (minijack, monaural) accepts a commercially available plug-in-power microphone (rated voltage: 2.0V DC).

External speaker system can be connected

The line output jack (minijack, monaural) allows connection of a commercially available speaker system with the built-in amplifier so that the sound transmitted via the network can be output from the connected speaker system.

Sending the image and controlling peripheral devices by synchronizing with the alarm

The camera is equipped with the motion detection function (in MPEG4 mode), a sensor input terminal and an alarm output terminal. You can send images from the camera as an E-mail attachment or to an FTP server by synchronizing with motion detection or external sensor input, or control peripheral devices connected to the alarm output terminal.

Image flip function

The image flip function allows rotation of images from the camera by 180 degrees according to the installation location of the camera.

Supplied IP Setup Program

The camera is supplied with the IP Setup Program for easy performance of the network setting.

NOTICE TO USERS

© 2005 Sony Corporation. All rights reserved. This manual or the software described herein, in whole or in part, may not be reproduced, translated or reduced to any machine readable form without prior written approval from Sony Corporation.

SONY CORPORATION PROVIDES NO WARRANTY WITH REGARD TO THIS MANUAL, THE SOFTWARE OR OTHER INFORMATION CONTAINED HEREIN AND HEREBY EXPRESSLY DISCLAIMS ANY IMPLIED WARRANTIES OF MERCHANTABILITY OR FITNESS FOR ANY PARTICULAR PURPOSE WITH REGARD TO THIS MANUAL, THE SOFTWARE OR SUCH OTHER INFORMATION. IN NO EVENT SHALL SONY CORPORATION BE LIABLE FOR ANY INCIDENTAL, CONSEQUENTIAL OR SPECIAL DAMAGES, WHETHER BASED ON TORT, CONTRACT, OR OTHERWISE, ARISING OUT OF OR IN CONNECTION WITH THIS MANUAL, THE SOFTWARE OR OTHER INFORMATION CONTAINED HEREIN OR THE USE THEREOF.

Sony Corporation reserves the right to make any modification to this manual or the information contained herein at any time without notice.

The software described herein may also be governed by the terms of a separate user license agreement.

- “IPELA” and **IPELA** are trademarks of Sony Corporation.
- Microsoft, Windows, Internet Explorer and MS-DOS are registered trademarks of Microsoft Corporation in the United States and/or other countries.
- Java is a trademark of Sun Microsystems, Inc. in the United States and other countries.
- Intel and Pentium are registered trademarks of Intel Corporation or its subsidiaries in the United States and other countries.
- Adobe, Acrobat and Adobe Reader are trademarks of Adobe Systems Incorporated in the United States and/or other countries.

All other company and product names are trademarks or registered trademarks of the respective companies or their respective makers.

Phenomena Specific CCD Image Sensors

The following phenomena that may appear in images are specific to CCD (Charge Coupled Device) image sensors. They do not indicate malfunctions.

White flecks

Although the CCD image sensors are produced with high-precision technologies, fine white flecks may be generated on the screen in rare cases, caused by cosmic rays, etc.

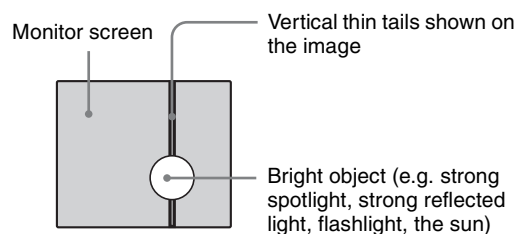
This is related to the principle of CCD image sensors and is not a malfunction.

The white flecks especially tend to be seen in the following cases:

- when operating at a high environmental temperature
- when you have raised the gain (sensitivity)
- when using the slow shutter

Vertical smear

When an extremely bright object, such as a strong spotlight or flashlight, is being shot, vertical tails may be produced on the screen, or the image may be distorted.



Aliasing

When fine patterns, stripes, or lines are shot, they may appear jagged or flicker.

How to Use This User's Guide

This User's Guide explains how to operate the SNC-P1 Network Camera from a computer.

The User's Guide is written to be read on the computer display.

As this section gives tips on using the User's Guide, read it before you operate the camera.

Jumping to the related page

When you read the User's Guide on the computer display, click on the sentence to jump to the related page.

Software display examples

Note that the displays shown in the User's Guide are explanatory examples. Some displays may be different from the ones which appear as you operate the application software.

Printing the User's Guide

Depending on your system, certain displays or illustrations in the User's Guide, when printed out, may differ from those as portrayed on your screen.

Installation Manual (printed matter)

The supplied Installation Manual describes the names and functions of parts and controls of the Network Camera, connecting examples and how to set up the camera. Be sure to read the Installation Manual before operating.

System Requirements

These are the requirements for the computer that displays the image or controls the camera.

Processor

Intel Pentium III 1 GHz or higher (Intel Pentium IV, 2 GHz or higher recommended)

RAM

256 MB or more

OS

Microsoft Windows 2000, Windows XP, Windows Vista

Web browser

Microsoft Internet Explorer Ver. 6.0 or later

The Preparation section explains what the administrator has to prepare for monitoring the images after installation and connection of the camera.

Assigning the IP Address to the Camera

To connect the camera to a network, you need to assign a new IP address to the camera when installing the camera for the first time.

You can assign an IP address in two ways:

- Using the setup program stored in the supplied CD-ROM (see page 7)
- Using the ARP (Address Resolution Protocol) commands (see page 74)

This section explains how to assign an IP address to the camera using the supplied setup program and how to configure the network.

Before starting, connect the camera, referring to “Connections” in the supplied Installation Manual. Consult the administrator of the network about the assigned IP address.

Note

- The IP Setup Program may not operate correctly if you use a personal firewall or antivirus software in your computer. In that case, disable the software or assign an IP address to the camera using another method. For example, see “Assigning the IP Address to the Camera Using ARP Commands” on page 74.
- If you are using Windows XP Service Pack 2 or Windows Vista, disable the Windows Firewall function. Otherwise the IP Setup Program will not operate correctly. For the setting, see “Configuring Windows Firewall” in “When using Windows XP Service Pack 2” on page 10 or “Configuring Windows Firewall” in “When using Windows Vista” on page 12.

Assigning an IP address using the IP Setup Program

- 1 Insert the CD-ROM in your CD-ROM drive. A cover page appears automatically in your Web browser. If it does not appear automatically in the Web browser, double-click on the index.htm file on the CD-ROM.

When you are using Windows Vista, pop-up “AutoPlay” may appear. For details, “Installing software” in “When using Windows Vista” on page 11.

- 2 Click the **Setup** icon of **IP Setup Program**. The “File Download” dialog opens.

When you are using Windows XP Service Pack 2 or Windows Vista, a message regarding the active contents may appear. For details, see “Installing software” in “When using Windows XP Service Pack 2” on page 9 or “Installing software” in “When using Windows Vista” on page 11.

- 3 Click **Open**.

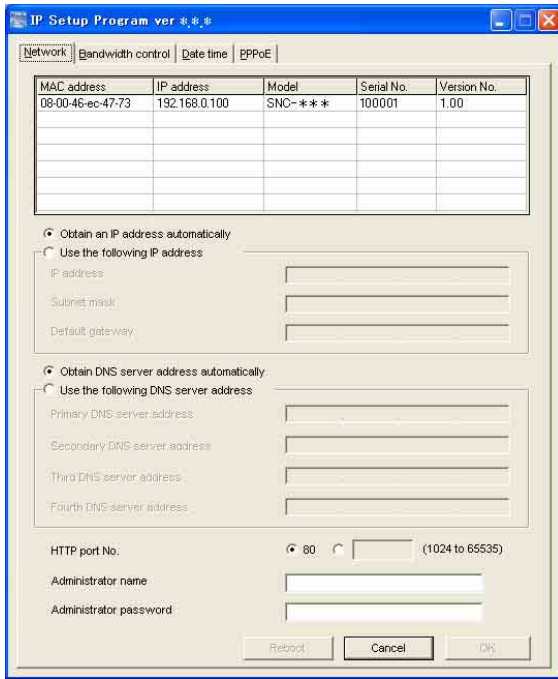
Note

If you click “Save this program to disk” on the “File Download” dialog, you will not be able to perform set up correctly. Delete the downloaded file, and click the **Setup** icon again.

- 4 Install the IP Setup Program on your computer using the wizard. If the Software License Agreement is displayed, read it carefully and click **Accept** to continue with the installation.
- 5 Start the IP Setup Program.

When you are using Windows Vista, message “User Account Control – An unidentified program wants access to your computer” may appear. In this case, click **Allow**.

The program detects the network cameras connected to the local network and lists them on the Network tab window.



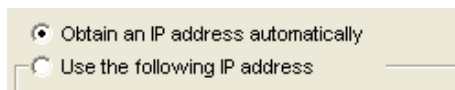
- 6** Click on the camera in the list to which you want to assign a new IP address.

MAC address	IP address	Model	Serial No.	Version No.
08-00-46-ec-47-73	192.168.0.100	SNC-***	100001	1.00

The network settings for the selected camera are displayed.

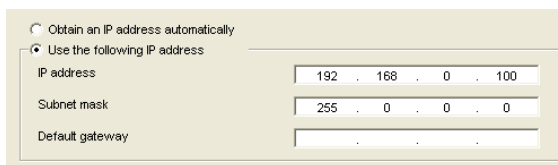
- 7** Set the IP address.

To obtain the IP address automatically from a DHCP server:
Select **Obtain an IP address automatically**.



The IP address, Subnet mask and Default gateway are assigned automatically.

To specify the IP address manually:
Select **Use the following IP address**, and type the IP address, Subnet mask and Default gateway in the relevant boxes.

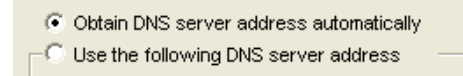


Note

When you select **Obtain an IP address automatically**, make sure that the DHCP server is operating on the network.

- 8** Set the DNS server address.

To obtain the DNS server addresses automatically:
Select **Obtain DNS server address automatically**.



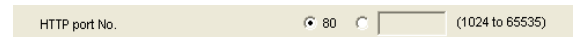
To specify the DNS server addresses manually:
Select **Use the following DNS server address**, and type the Primary DNS server address and Secondary DNS server address in the relevant boxes.



Note

The Third DNS server address and Fourth DNS server address are invalid for this camera.

- 9** Set the HTTP port No.



Normally, select **80** for the HTTP port No. To use another port number, type the port number between 1024 and 65535 in the text box.

- 10** Type the Administrator name and Administrator password.

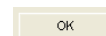


The factory settings of both items are “admin.”

Note

You cannot change the Administrator name and Administrator password in this step. To change these items, see “Setting the User — User setting Menu” on page 41.

- 11** Confirm that all items are correctly set, then click **OK**.



If “Setting OK” is displayed, the IP address is correctly assigned.



12 To access the camera directly, double-click the camera name in the list.

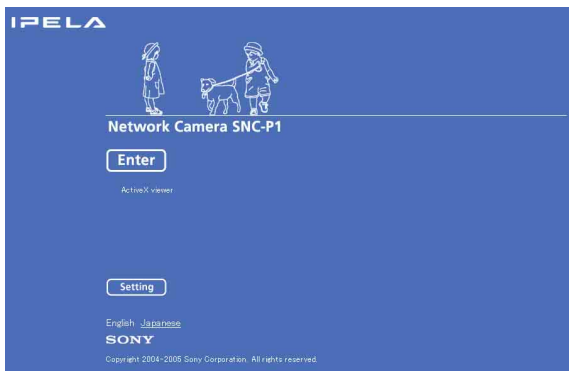
MAC address	IP address	Model	Serial No.	Version No.
08-00-46-ec-47-73	192.168.0.100	SNC-***	100001	1.00

Tip

The factory setting of the camera network is as follows.

IP address: 192.168.0.100
Subnet mask: 255.0.0.0

The welcome page of the network camera is displayed in the Web browser.



Note

If the IP address is not set correctly, the welcome page does not appear after step 12. In this case, try to set the IP address again.

When using Windows XP Service Pack 2

Installing software

A warning message regarding the active contents may appear when you install software such as IP Setup Program from CD-ROM. In this case, operate as follows:

Example: In case of IP Setup Program

If message “Internet Explorer” appears, click **Yes**.



If message “File Download – Security Warning” appears, click **Run**.



Note

If you select **Save** in the “File Download – Security Warning” dialog, you will not be able to perform installation correctly. Delete the downloaded file, and click the **Setup** icon again.

If message “Internet Explorer – Security Warning” appears, click **Run**.



The software installation starts.

Installing ActiveX Control

During installation of ActiveX Control, the information bar or “Security Warning” may appear. In this case, operate as follows:

If message “Information Bar” appears, click **OK**.



If the information bar appears, click on the bar and select **Install ActiveX Control....**



If “Internet Explorer – Security Warning” appears, click **Install**.



The installation of ActiveX Control starts. When installation is completed, the main viewer or the Motion detection setting menu appears.

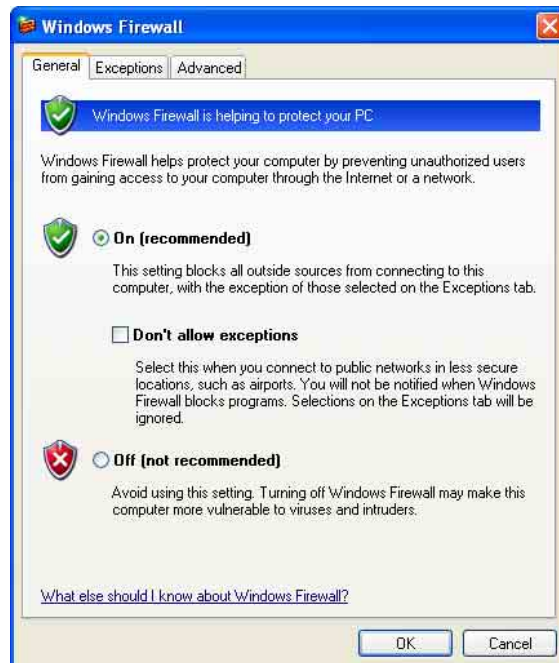
Configuring Windows Firewall

The IP Setup Program or SNC audio upload tool may not operate correctly depending on the configuration of Windows Firewall. (No cameras are shown in the list even if they are detected.) In this case, confirm the Windows Firewall configuration as follows:

Example: In case of IP Setup Program

- 1 Select **Control Panel** from the Start menu of Windows.
- 2 Select **Security Center** of the working field.

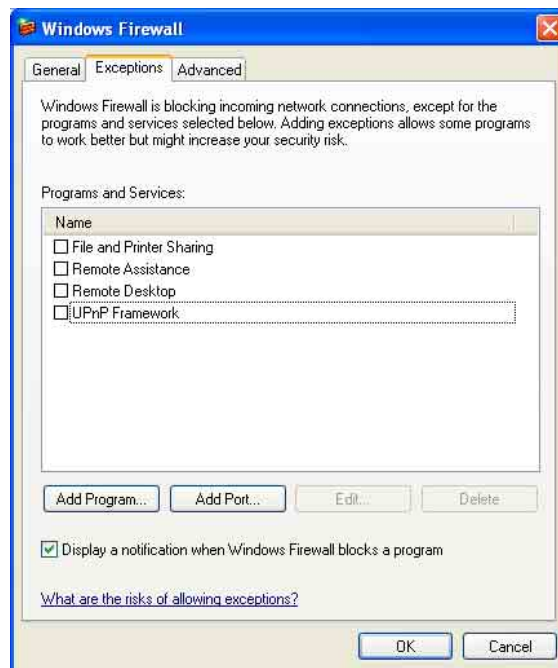
- 3 Select **Windows Firewall** and select **Off** in the Windows Firewall dialog.



The cameras will be displayed in the list.

If you want to keep Windows Firewall **On**, continue with the following steps.

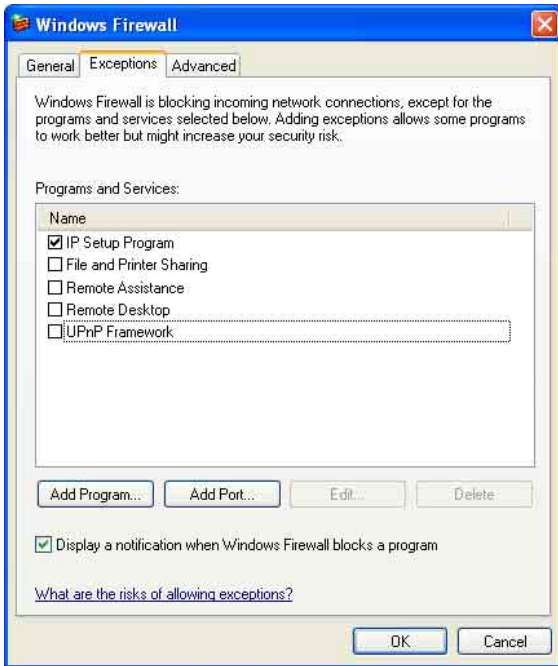
- 4 Select the “Exceptions” tab.
- 5 Select **Add Program....**



- 6 In the Add Program dialog, select **IP Setup Program** and click **OK**.

Then the IP Setup Program is added to the Programs and Services list.

- 7 Click **OK**.



When the above procedure is completed, the cameras connected in the local network are displayed in the IP Setup Program.

When using Windows Vista

Installing software

A warning message regarding the active contents may appear when you install software such as IP Setup Program from CD-ROM. In this case, operate as follows:

Example: In case of IP Setup Program

If pop-up “AutoPlay” appears when a CD-ROM is inserted into the CD-ROM drive, click **Install or run program**.



Note

If you click **Open folder to view files**, Web browser will not open automatically. In this case, double-click the “index.htm” file in the CD-ROM.

If message “Internet Explorer” appears, click **Yes**.



If message “File Download – Security Warning” appears, click **Run**.



Note

If you select **Save** in the “File Download – Security Warning” dialog, you will not be able to perform

installation correctly. Delete the downloaded file, and click the Setup icon again.

If message “Internet Explorer – Security Warning” appears, click **Run**.



If message “User Account Control – An unidentified program wants access to your computer” appear, click **Allow**.

The software installation starts.

Starting the software

When you start software such as IP Setup Program, message “User Account Control – An unidentified program wants access to your computer” may appear. In this case, click **Allow**.

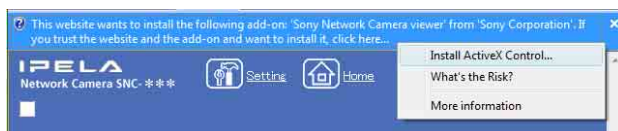
Installing ActiveX Control

During installation of ActiveX Control, the information bar or “Security Warning” may appear. In this case, operate as follows:

If message “Information Bar” appears, click **OK**.



If the information bar appears, click on the bar and select **Install ActiveX Control....**



If message “User Account Control – Windows needs your permission to continue” appear, click **Continue**.

If “Internet Explorer – Security Warning” appears, click **Install**.



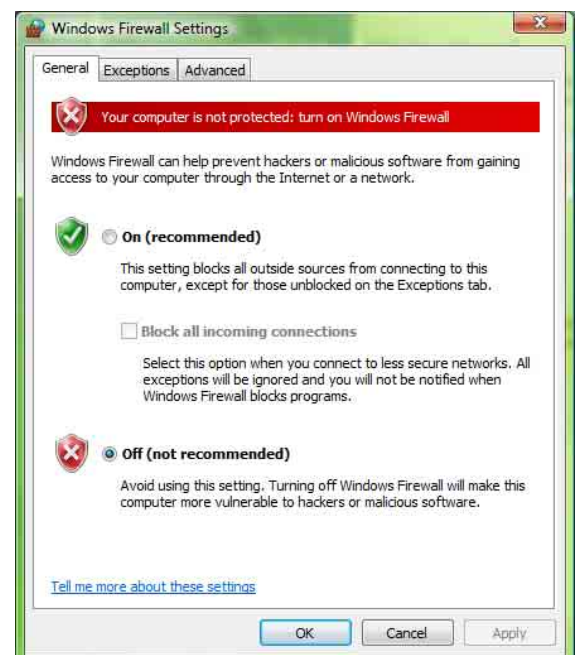
The installation of ActiveX Control starts. When installation is completed, the main viewer or the Motion detection setting menu appears.

Configuring Windows Firewall

The IP Setup Program or SNC audio upload tool may not operate correctly depending on the configuration of Windows Firewall. (No cameras are shown in the list even if they are detected.) In this case, confirm the Windows Firewall configuration as follows:

Example: In case of IP Setup Program

- 1 Select **Control Panel** from the Start menu of Windows.
- 2 Click **Windows Firewall**.
- 3 Select **Turn Windows Firewall on or off**. “User Account Control – Windows needs your permission to continue” may appear. In this case, click **Continue**.
- 4 Select **Off** in the “General” tab.



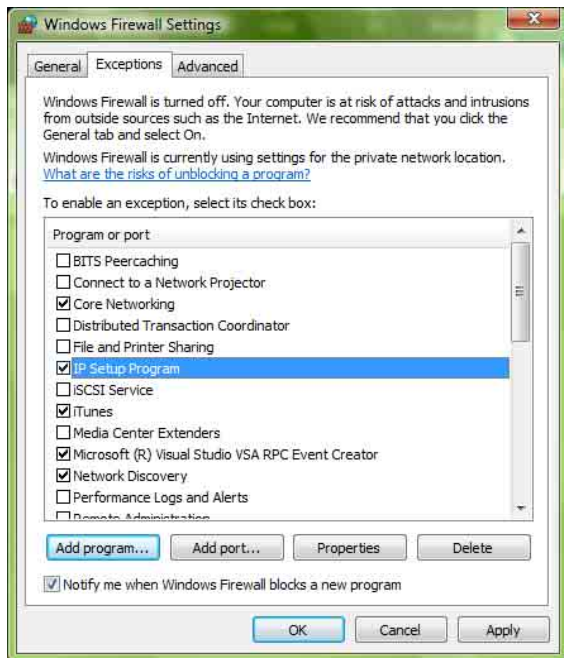
The cameras will be displayed in the list.
If you want to keep Windows Firewall **On**, continue with the following steps.

- 5 Select the “Exceptions” tab.
- 6 Select **Add Program...**
- 7 If the Add Program dialog appears, select **IP Setup Program** and click **OK**.



Then the IP Setup Program is added to the Program or port list.

- 8 Click **OK**.



When the above procedure is completed, the cameras connected in the local network are displayed in the IP Setup Program.

Accessing the Camera Using the Web Browser

When the IP address has been assigned to the camera, check that you can actually access the camera using the Web browser installed in your computer.
Use Internet Explorer as the Web browser.

- 1 Start the Web browser on the computer and type the IP address of the camera in the URL box.



The welcome page of the network camera is displayed in the Web browser.



- 2 Click **Enter**.
The main viewer is displayed.



When the main viewer is correctly displayed, the IP address assignment is completed.

When the main viewer of the camera is displayed for the first time

When you click **Enter**, “Security Warning” is displayed. When you click **Yes**, ActiveX control is installed and the main viewer is displayed.



Notes

- If **Automatic configuration** is enabled in the Local Area Network (LAN) Settings of Internet Explorer, the image may not be displayed. In that case, disable **Automatic configuration** and set the Proxy server manually. For the setting of the Proxy server, consult your network administrator.
- When you install ActiveX Control, you should be logged in to the computer as Administrator.
- When you are using Windows XP Service Pack 2 or Windows Vista, the information bar or “Security Warning” may appear as you click **Enter**. For details, see “Installing ActiveX Control” in “When using Windows XP Service Pack 2” on page 9 or “Installing ActiveX Control” in “When using Windows Vista” on page 12.

Tip

Every page of this software is optimized as display character size **Medium** for Internet Explorer.

To display the welcome page and the main viewer correctly

To operate the welcome page and the main viewer correctly, set the security level of the Internet Explorer to **Medium** or lower, as follows:

- 1 Select **Tools** from the menu bar for Internet Explorer, then select **Internet Options** and click the **Security** tab.
- 2 Click the **Internet** icon (when using the camera via the Internet) or **Local intranet** icon (when using the camera via a local network).

- 3 Set the slider to **Medium** or lower. (If the slider is not displayed, click **Default Level**.)

When using antivirus software, etc. on the computer

- When you use antivirus software, security software, personal firewall or pop-up blocker on your computer, the camera performance may be reduced, for example, the frame rate for displaying the image may be lower.
- The Web page displayed when you log in to the camera uses JavaScript. The display of the Web page may be affected if you use antivirus software or other software described above on your computer.

Basic Configuration by the Administrator

You can monitor the image of the camera by logging in with the initial condition of this network camera. You can also set various functions according to the install position, network condition or purpose of the camera. We recommend you configure the following items before monitoring the image from the camera.

Setting contents	Easy mode menu	Advanced mode menu
Select the white balance mode according to the installing position (indoor or outdoor).	White balance (page 26)	White balance (page 35)
Flip the image according to the installation position (desk top or ceiling).	Mount (page 26)	Image flip (page 35)
Select the brightness of the blue LED on the top of the camera.	Blue LED (page 26)	Blue LED (page 31)
Set the format of the image sent from the camera (MPEG 4 or JPEG).	–	Video mode (page 34)
Select the brightness of the image sent from the camera.	Brightness (page 26)	Exposure mode (page 36) Brightness (page 36)
Select the quality of the image sent from the camera.	Image quality (page 26)	MPEG4 Tab (page 36) JPEG Tab (page 37)
Select the size of the image sent from the camera.	Image size (page 26)	Image size (page 34)
Select whether the audio from the camera microphone is sent or not.	Microphone (page 26)	Microphone (page 35)
Accord date and time of the camera with those of the computer.	Date & time setting (page 26)	Date & time Tab (page 31)
Make the setting for sending the monitor image attached to a mail.	e-Mail (SMTP) (page 26) Easy mode (e-Mail) (page 27)	e-Mail (SMTP) setting Menu (page 43)
Set the access right of the user for the camera.	–	User setting Menu (page 41)

Operating the Camera

The Operating the Camera section explains how to monitor the image from the camera using the Web browser. Use Internet Explorer as the Web browser. The functions of the camera should be set by the Administrator. For setting the camera, see “Administrating the Camera” on page 25.

Administrator and User

This network camera classifies the people who log in as the **Administrator** and the **User**.

The **Administrator** can use all functions of this network camera including camera setting. The functions the **User** can use are monitoring the image and audio from the camera, and controlling the camera. The **Viewer mode** setting restricts the user's access right, and the user is classified as the one of three types.

Each type of the user can use the following functions.

Function	Administrator	User		
		Full	Light	View
Monitor a live image	●	●	●	●
Watch date and time	●	●	●	●
Control the frame rate (Usable only when JPEG mode is selected)	●	●	–	–
Control the image view size	●	●	●	–
Zoom a image by the digital zoom	●	●	●	–
Save the still image in the computer	●	●	●	– ¹⁾
Send an image file to the FTP server	●	●	–	–
Send an image attached to a mail	●	●	–	–
Record an image on the inside memory of the camera	●	●	–	–
Control the Alarm out of the I/O port on the camera main unit	●	●	–	–

Function	Administrator	User		
		Full	Light	View
Switch the TCP/UDP transmission mode (Available in MPEG4 mode only)	● ²⁾	● ²⁾	–	–
Control the audio	●	●	●	●
Control the setting menu	●	–	–	–

- Usable function
- Not usable function

- 1) This function is usable with the Java applet viewer.
- 2) This function is not usable with the Java applet viewer.

The access rights of the administrator and the user can be set in “Setting the User — User setting Menu” on the Advanced mode menu for the administrator on page 41.

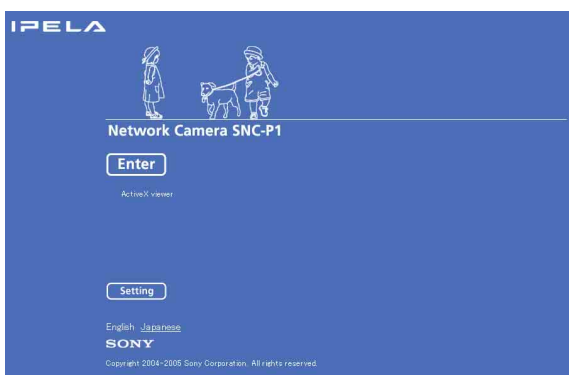
Logging in to Homepage — Welcome Page

Logging in as a User

- 1 Start the web browser on the computer and type the IP address of the camera you want to monitor.

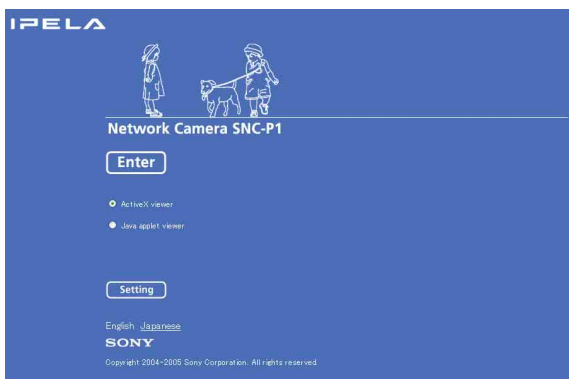


The welcome page of the network camera is displayed in the Web browser.



- 2 Select the viewer.
The usable viewers differ depending on the video mode (page 34) of the camera.
When the video mode is set to **MPEG4**, you can only select **ActiveX viewer**, and may not select other viewers. (MPEG4 is default. See illustration on Step 1 above.)
When the video mode is set to **JPEG**, you can select **ActiveX viewer** or **Java applet viewer**. For details, see “About Viewers” on page 18.

Welcome page when the video mode is JPEG



- 3 Select the viewer language.
Click **English** or **Japanese** at the bottom of the welcome page.

- 4 Click **Enter**.
The main viewer appears.

With the ActiveX viewer (MPEG4)



With the Java applet viewer



Control the camera from the main viewer.

Note

If the Welcome page does not activate correctly, the security level of the Internet Explorer may be set to **Medium** or higher. See “To display the welcome page and the main viewer correctly” on page 14 and check the security level.

Displaying the setting window for the administrator directly

When the administrator sets the camera functions, the setting window can be displayed directly from the welcome page.

- 1 Select the viewer language on the welcome page.
Click **English** or **Japanese** at the bottom of the welcome page.

- 2** Click **Setting** on the welcome page.
The following dialog appears.



- 3** Enter the user name and password for Administrator, then click **OK**.

The user name “admin” and the password “admin” are set at the factory for the Administrator. You can change them in the User setting menu of the Advanced mode menu (see page 41).

The Advanced mode menu appears in another window.



About Viewers

You can use the following viewer according to the **Video mode** setting in the camera setting menu of the Advanced mode menu (page 34).

ActiveX viewer

This viewer can monitor the image in both **MPEG4** and **JPEG** video modes.

You must install this viewer when you access to the main viewer at the first time.

When you display the main viewer of the camera for the first time

When you log in the network camera using ActiveX viewer for the first time (clicking **Enter** to enter the main viewer), the Security Warning appears. Click **Yes**

and install ActiveX Control. You can use all the functions of the viewer by using ActiveX Control.

Java applet viewer

You can select this viewer when the camera video mode is set to **JPEG**. The frame rate is lower than the ActiveX viewer.

The Java applet viewer operates only when Java is installed and Java (Sun) is enabled. If it does not operate correctly, check whether the effective Java version has been installed successfully and Java (Sun) is enabled.

Effective versions: Java Plug-in Ver. 1.6.0_01

To check the Java version

Select **Tools** from the menu bar of Internet Explorer, then select **Internet Options** and click the **Advanced mode** tab. Check whether the version of Java displayed for **Java (Sun)** is one of the versions specified above. If **Java (Sun)** is not displayed, it means that Java is not installed. You need to install Java.

To enable Java Plug-in

Check “Use JRE 1.6.0_01 for <applet> (requires restart)” in “Java (Sun)”.

To install Java Plug-in

Download Java 2 Runtime Environment, Standard Edition (JRE) from the homepage of Sun Microsystems, Inc., and install it by following the instructions on the installer.

Notes

- If **Automatic configuration** is enabled in the Local Area Network (LAN) Settings of Internet Explorer, the camera image may not be displayed. In that case, disable **Automatic configuration** and set the Proxy server manually. For the setting of the Proxy server, consult your network administrator.
- When you install ActiveX Control, you should be logged in to the computer as the Administrator.

Tip

Every page of this software is optimized for display character size **Medium** for Internet Explorer.

Configuration of Main Viewer

This section explains the functions of the parts and controls of the main viewer. For a detailed explanation on each part or control, see the specified pages.

Main viewer



Camera control section

Monitor image section

Main menu

Main menu



Setting

Click to display the Easy mode menu for Administrator menu. (See “Basic Operations of Easy mode” on page 25.)

You can operate this function only when logging in as the administrator.



Home

Displays the Welcome page.

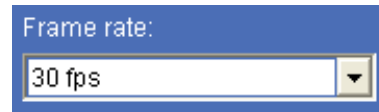


Player

Click to download the “SNC video player” application program built in the camera. The SNC video player allows you to play video/audio data recorded on the camera with your computer. (See “Using the SNC video player — Playing Video/Audio File Recorded on Camera” on page 71.)

Camera Control Section

Frame rate



(Displayed only when the camera Video mode (page 34) is set to **JPEG**.)

Selects the frame rate to transmit images.

View size



Selects the view size to be displayed. (page 21)



Digital zoom

Click to change the size of the digital zoom. (page 21)




Capture

Click to capture a still image shot by the camera and to store it in the computer. (See “Capturing a Monitor Image” on page 21.)

Trigger



(Displayed only when the camera **Viewer mode** (page 41) is set to **Full** and one or more triggers are enabled in the Trigger menu (page 54).)

Select the function you want to use from the drop-down list and click . The selected function is activated.

The selectable functions are as follows:

- send the still image files attached to an e-mail (page 22)
- send the still image files to an FTP server (page 22)
- record the still image files in the built-in memory, (page 23)
- switch the alarm output on/off (page 23)



Transmission (Switching the TCP/UDP transmission mode)

(Displayed only when the camera Video mode (page 34) is set to **MPEG4** and using the ActiveX viewer.)





Each click switches the transmission mode of the video/audio data among TCP mode, UDP (Unicast) mode and UDP (Multicast) mode. (page 24)

The last selected mode is saved in the computer, and will stay selected for the next starting.

Volume



(Displayed when the Microphone (page 35) is set to **On**.)

Drag the bar of  icon to adjust the volume. When you click  icon, the icon changes to  and the audio output stops. To output the audio, click  again.

Note

If the volume icon is not displayed due to the use of using Java applet viewer, Audio codec may not be set **G.711(64kbps)** (page 35) or Java may not be installed correctly.

To check if Java is installed correctly, refer to “Java applet viewer” of “About Viewers” on page 18.

Monitor Image



The image shot by the camera is shown here. Date and time is displayed at the top of the window.

Controlling the Monitor Image

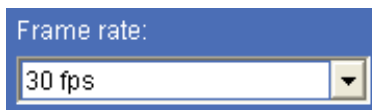
You can monitor the camera image on the monitor window of the main viewer.

Monitoring the camera image

- 1 Log in to the home page to display the main viewer. You can see how to log in on page 17, “Logging in as a User”.



- 2 Select the frame rate (only when the camera Video mode is set to **JPEG**).



Click the **Frame rate** list box to select the frame rate for transmitting the image. Selectable frame rates are **1, 2, 3, 4, 5, 6, 8, 10, 15, 20, 25** and **30 fps**.

“fps” is a unit indicating the number of frames transmitted per second.

If you select **30 fps**, the image is sent at the maximum speed of the connected line (30 fps maximum).

Note


The frame rate options indicate the maximum number of frames that can be transmitted. The number of frames actually transmitted may vary depending on network environments and camera settings (image size and image quality settings).

- 3 Select the view size.





Click **View size** list box to select the view size from among **Auto**, **640 × 480**, **320 × 240** and **160 × 120**. **Auto** is determined by the image size specified in the Camera setting page (page 34).

Zooming in the monitor image

- 1 Click  Digital zoom icon.
- 2 Click the point you want to zoom in. The image is expanded by about 1.5 times with the clicked point at the center.




The digital zoom icon changes to .

- 3 To cancel zooming in, click  icon.

Capturing a Monitor Image

You can capture a monitoring image as a still image and save it in the computer.

Capturing a monitor image

- 1 Monitor the camera image in the monitor window.
- 2 Click  Capture icon. The still image of the moment you click is captured, and the still image is displayed in the monitor window.

With the ActiveX viewer



With the Java applet viewer

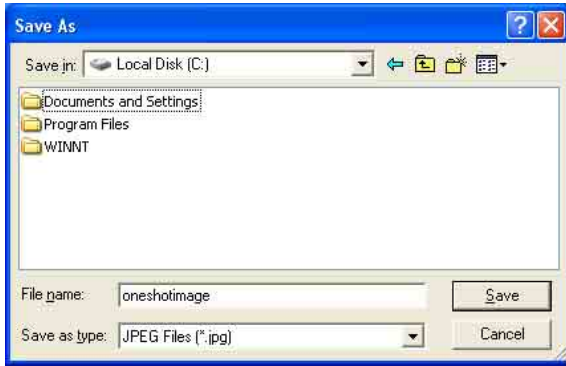


- 3 To cancel the still image, click **Cancel** or **Close**.

Saving the captured image

With the ActiveX viewer

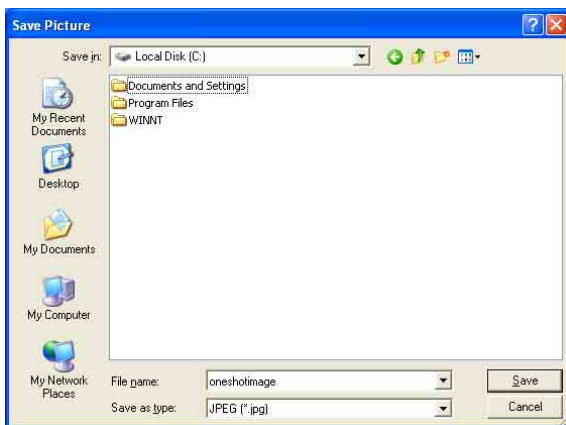
- 1 Capture the monitor image.
- 2 Click **Save**.
Save As dialog appears.



- 3 Select **JPEG Files** or **Windows Bitmap Files** as **Save as type**.
- 4 Type the **File name** and specify **Save in**, then click **Save**.

With the Java applet viewer

- 1 Capture the monitor image.
- 2 Right-click the mouse to display the menu and select **Save Picture As...**.
Save Picture dialog appears.



- 3 Select **JPEG** or **Bit map** as **Save as type**.
- 4 Type in **File name** and specify **Save in**, then click **Save**.

Sending an Image File


You can send a captured still image with an attached mail or to the FTP server.

To use this function, you need to make the **e-Mail(SMTP)** or **FTP client** active, and set the address properly in the Trigger setting menu on the Advanced mode menu (page 54).

Sending a Monitor Image via e-Mail

- 1 Monitor the image on the monitor window.
- 2 Select **e-Mail** from the Trigger list box.




- 3 Click .
The still image of the moment when you click is captured, and the mail attached with the image file is sent to the mail address you have set.

Sending a Monitor Image to an FTP Server

- 1 Monitor the image on the monitor window.
- 2 Select **FTP** from the Trigger list box.



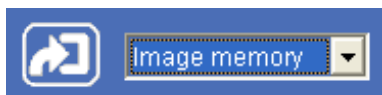
- 3 Click .
The still image of the moment when you click is captured, and the image file is sent to the FTP server.


Recording a Still Image in the Built-in Memory of the Camera

You can capture a camera image as a still image and record it in the built-in memory of the camera.

To use this function, you need to make **Image memory** active and to set details of the image memory in the trigger setting menu on the Advanced mode menu (page 54).

- 1 Monitor the image on the monitor window.
- 2 Select **Image memory** from the Trigger list box.



- 3 Click . The still image of the moment when you click is captured, and the image file is recorded in the built-in memory of the camera.


Controlling Alarm output

You can control the Alarm output On (short-circuit) and Off (open).

To use this function, you need to make **Alarm output** active in the Trigger setting menu on the Advanced mode menu (page 55).

- 1 Monitor the image on the monitor window.
- 2 Select **Alarm output** from the Trigger list box.



- 3 Click . Each click switches the Alarm output between On (short-circuit) and Off (open) alternately.

Tip

For the connection of peripheral devices to the Alarm output of the I/O port, see the supplied Installation Manual.


Switching TCP/UDP Transmission Mode

You can select the communication port of the video/audio data as TCP or UDP.

This function can be used when the Video mode (page 34) is set to **MPEG4** and the ActiveX viewer is used.

Notes

- The function may not operate correctly when you use personal firewall software or antivirus software on your computer. In that case, disable the software or select the TCP mode.
- If you are using Windows XP Service Pack 2 or Windows Vista, disable “Windows Firewall.” For details, see “Configuring Windows Firewall” in “When using Windows XP Service Pack 2” on page 10 or “Configuring Windows Firewall” in “When using Windows Vista” on page 12.

- 1 Display the main viewer.
- 2 Click  TCP/UDP transmission selector icon. Transmission mode selector dialog appears.



- 3 Click one of the buttons **TCP**, **UDP (Unicast)** or **UDP (Multicast)**.

TCP: This is normally selected.

When **TCP** is selected as the communication port, HTTP communication is adopted for video/audio communication.

HTTP is the protocol used for reading a usual Web page.

In an environment capable of reading Web page, you can watch or listen to the video/audio by selecting TCP port.

UDP (Unicast): When **UDP (Unicast)** is selected as the communication port, RTP (Real-time Transport Protocol) is adopted for video/audio communication. As RTP is the protocol for running video/audio data, video/audio can be played smoother than when TCP (HTTP) is selected. If the

fire-wall is installed between the camera and the computer, or depending on the network environment, the video/audio may not play properly when **UDP (Unicast)** is selected. In this case, select **TCP**.

UDP (Multicast): This is selectable when the multicast streaming (page 34) is **On**. When **UDP (Multicast)** is selected as the transmission port, RTP (Real-time Transport Protocol) and UDP multicast techniques are adopted for video/audio transmission. By selecting it, the network transmission load of the camera can be reduced. If a router which does not correspond to the multicast or the fire-wall is installed between the camera and the computer, the video/audio may not play properly. In this case, select **TCP** or **UDP (Unicast)**.

- 4 Click **OK** to close the dialog.

If you decide not change the transmission setting, click **Cancel**.


Administrating the Camera

The Administrating the Camera section explains how to set the functions of the camera by the Administrator. For monitoring the camera image, see “Operating the Camera” on page 16.


Administrator setting menu includes the Easy mode (basic setting) and the Advanced mode (detail settings depending on the user's condition). This section explains the basic operations of the Easy mode and explains each option of the Easy mode, then similarly for the Advanced mode.

Basic Operations of Easy mode

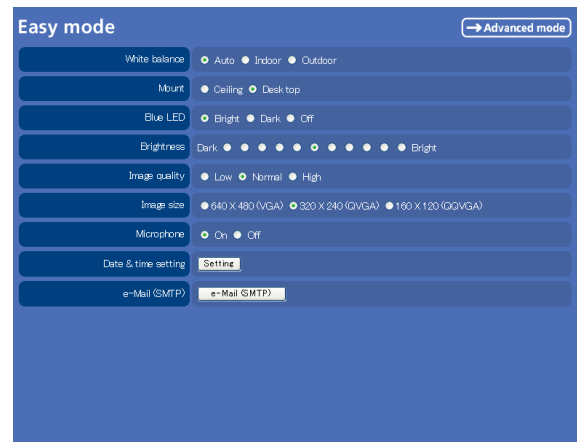
The Easy mode is used for basic settings for the network camera.

Click  Setting icon of the main viewer to display Easy mode.

How to set Easy mode

- 1 Log in the home page to display the main viewer. You can see how to log in on page 17 “Logging in as a User”.
- 2 Select the viewer language on the welcome page. Click **English** or **Japanese** at the bottom of the welcome page.
- 3 Click  .
The authentication dialog appears. Enter the user name and password for Administrator. The user name “admin” and password “admin” are set at the factory for the Administrator.

Easy mode appears.



Note

If you set “White balance”, “Image quality” and “Image size” in Advanced mode to values not shown in Easy mode, the radio button may be in the statement that nothing is selected. In this case, you can select it by clicking the radio button.

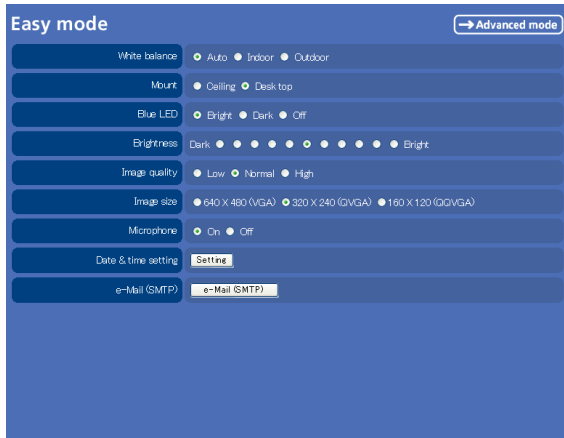
- 4 Click the radio button of the option you want to set from among those in the Easy mode menu, or click the setting item button to display the sub menu, and decide details.

In the Easy mode menu, the new setting will become active only by being selected.

For details on each setting option, see “Setting Options of Easy mode” on page 26.

- 5 After setting, click  .
The display returns to the main viewer.

Setting Options of Easy mode



→ Advanced mode

Displays the Advanced mode menu (page 28).

White balance

Select the white balance mode.

Auto, **Indoor** or **Outdoor** can be selected.

Mount

The image can be displayed upside down.

Select **Desk top** when you use the network camera on desktop, and select **Ceiling** when you use it fixed to the ceiling. You can always watch the proper image regardless of its position.

Blue LED

You can select the brightness of the blue LED on the top of the network camera.

Bright, **Dark** or **Off** can be selected.

Brightness

You can adjust the brightness of the image sent from the network camera in eleven levels.

Click the button of the brightness you want to select. The button on the left side is the darkest (**Dark**), and the button on the right is the brightest (**Bright**).

Image quality

You can select the quality of the image sent from the network camera.

Usually select **Normal**. To give priority to the transmission speed and to watch a smooth image, select **Low**. To give priority to the image quality, select **High**.

Note


According to the line condition, smooth image may not be obtained even if you select **Low**.

Image size

You can select the image size sent from the network camera.

640 × 480 (VGA), **320 × 240 (QVGA)** or **160 × 120 (QQVGA)** can be selected.

Microphone

Select whether you send the audio from the built-in microphone or from the  microphone input connector. Select **On** to send the audio from this network camera microphone.

Note

When you change the Microphone setting, click **Refresh** of the Web browser to reflect the change in the opening main viewer page.

Date & time setting

When you click **Setting**, date and time of the camera is set to suit those of the computer.

Note

The setting time may not accord with the exact time according to the network environment.

e-Mail (SMTP)

This is the setting for sending an e-mail with an attached image file of the monitor. Click **e-Mail (SMTP)** and the “Easy mode (e-Mail)” setting mode menu appears. (page 27)

Easy mode (e-Mail)

This is displayed when you click **e-Mail (SMTP)** of the Easy mode menu.

Note

While the camera video mode is set to **MPEG4**, the image of the composite video signal output from the video output connector of the camera may be distorted during mail transmission.

e-Mail (SMTP)

Select **On** when you use e-Mail (SMTP) function. When you select **On**, setting options are displayed. If you do not use it, select **Off** and click **OK** below.

SMTP server name

Type the SMTP (sending mail) server name up to 64 characters, or type the IP address of the SMTP server.

Authentication

Select the authentication required when you send an e-Mail.

None: Select when no authentication is necessary when an e-mail is sent.

SMTP Authentication: Select when authentication is necessary when an e-mail is sent.

POP before SMTP: Select when POP before SMTP authentication is necessary when an e-mail is sent.

POP server name

Type the POP (receiving mail) server name up to 64 characters, or type the IP address of the POP server. This setting is necessary when the SMTP server which sends e-mails performs authentication using the POP user account.

User name, Password

Type the user name and password of the user who has the mail account. This setting is necessary when the SMTP server which sends e-Mails performs authentication.

Recipient e-Mail address

Type the address to which you send e-Mails to up to 64 characters. If you want to send to two or more addresses, set them in the e-Mail (SMTP) setting menu (page 43) of the Advanced mode menu.

Administrator e-Mail address

Type the e-Mail address of the administrator of the camera up to 64 characters.

This will be the address for return mail and system mail from the mail server.

Subject

Type the subject up to 64 characters.

Message

Type the text up to 384 characters (Return corresponds to two characters).

Mode

Set the e-Mail sending mode.

Motion detection: When the camera detects any action, it sends the image file.

If you select **Motion detection**, the camera detects activity in the shooting image due to the built-in motion detection function. Then the camera sends the e-Mail with the attached image file.

Set the details of the motion detection of the camera in the Motion detection setting menu (page 57) of the Advanced mode menu.

Note

The picture attached to the e-Mail is of the moment the motion detection function of the camera works. If the next activity is detected during processing of the image of the first detection, the process will be rejected.

The motion detection function may not work properly in the following cases.

- During camera setting operation in the Camera setting menu.
- When the object is dark.
- When the camera is shaken because the installation location is unstable.

Periodical sending: The image file is sent regularly. After checking it, select **Every 1 hour** or **Every 6 hours**.

Every 1 hour: The camera sends the e-Mail with attached image file every 1 hour.

Every 6 hours: The camera sends the e-Mail with attached image file every 6 hours.

OK

Click this after setting.


When you click it, the dialog "Send a test mail?" appears. When you send a test mail to the address you have set, select **OK**. If you do not wish to send it, select **Cancel**.

Cancel

Click to return to the previous condition by canceling the setting.

Basic Operations of Advanced mode Menu

You can set all functions to suit the user's condition in the Advanced mode menu.

Click **Setting** in the welcome page or  button in the Easy mode menu to display the Advanced mode menu.

Note on the display of menu options

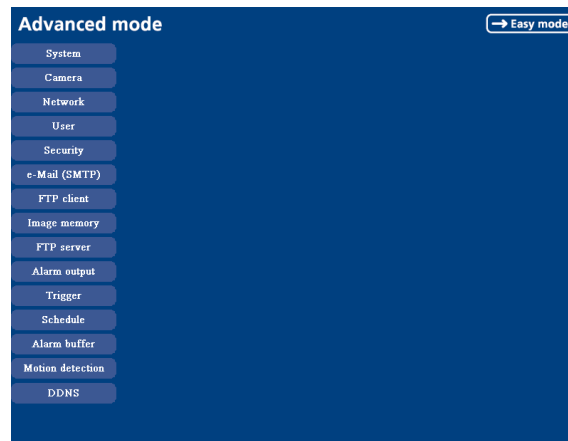
In the setting menus of this unit, the options that you cannot currently select will be grayed out.

The options that you can currently select will be displayed automatically as you change the setting.


How to set Advanced mode

- 1 Log in the home page to display the welcome page. You can see how to log in on page 14 "Logging in as a User".
- 2 Select the viewer language on the welcome page. Click **English** or **Japanese** at the bottom of the welcome page.
- 3 Click **Setting** in the welcome page. The authentication dialog appears. Enter the user name and password for Administrator. The user name "admin" and password "admin" are set at the factory for the Administrator.

Advanced mode menu appears.

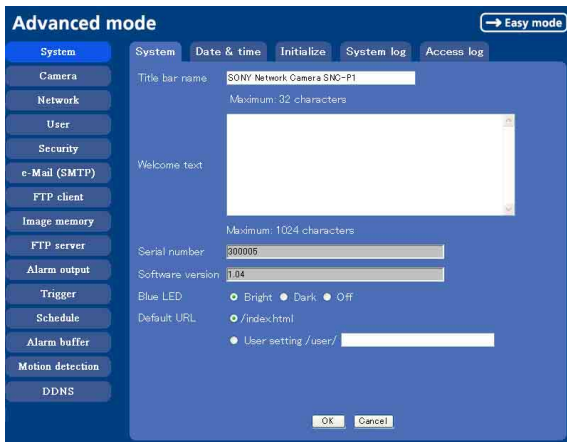


The following steps also display the Advanced mode menu.

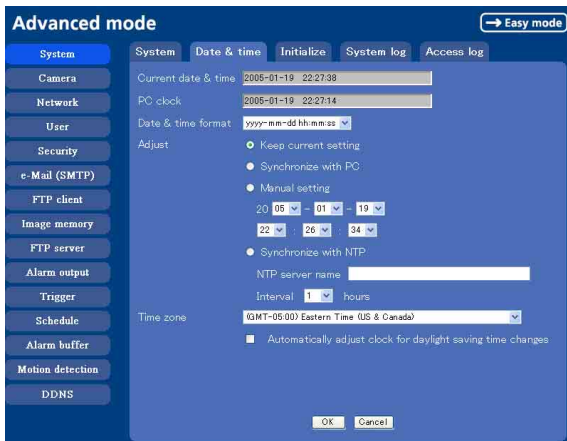
- ① Click **Enter** in the welcome page to display the main viewer.
- ② Click  in the main viewer.
- ③ Enter the user name and password for Administrator. Easy mode appears.

4 Click .

- 4 Click the menu name (example: System) on the left side of the Advanced mode menu. The clicked setting menu appears. Example: System setting menu



- 5 Select the tab above the setting menu, and set each setting option in the tab. Example: “System” setting menu “Date & time” tab



See page 29 to 58 for details of setting menu tabs and setting options.

- 6 After setting, click **OK**. The setting contents become active.

Click **Cancel** to invalidate the set values and return to the previous settings.

Buttons common to every setting menu

The following buttons are displayed on the setting menus where they are necessary. The functions of the buttons are the same on every setting page.



Click this button to validate the settings.

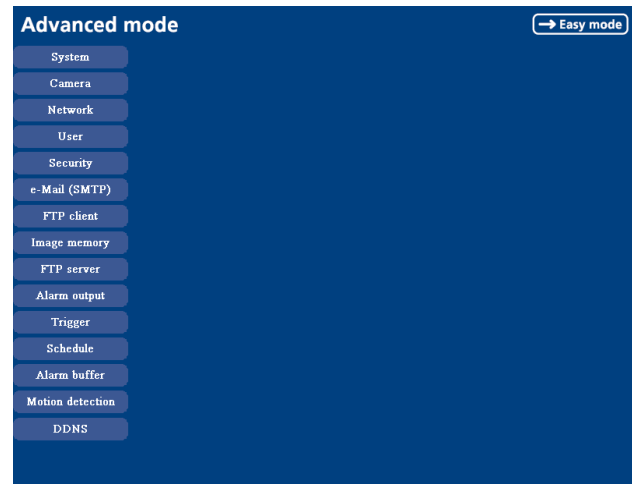


Click this button to invalidate the set values and return to the previous settings.

General notes on setting menus

- After changing a setting on a setting menu, wait at least 10 seconds before turning off immediately the power of the camera. If the power is turned off immediately, the changed setting may not be stored correctly.
- When the camera settings are changed while watching the main viewer, some settings cannot be restored. To reflect the change on the opening main viewer, click **Refresh** of the Web browser.

Configuration of Advanced mode Menu



Displays the Easy mode menu (page 25).

System

Displays the System setting menu. (“Configuring the System — System setting menu” on page 31).

Camera

Displays Camera setting menu for setting the camera image and audio. (“Setting the Camera Image and Audio — Camera setting Menu” on page 34)

Network

Displays the network setting menu for setting the network connection. (“Configuring the Network — Network setting Menu” on page 38)

User

Displays the user setting menu for setting the user name and the password to log in. (“Setting the User — User setting Menu” on page 41)

Security

Displays the security setting menu for specifying the computer allowed to connect to the camera. (“Setting the Security — Security setting Menu” on page 42)

e-Mail (SMTP)

Displays the e-Mail (SMTP) setting menu for sending an e-mail. (“Sending an Image via mail — e-Mail (SMTP) setting Menu” on page 43)

FTP client

Displays the FTP client setting menu for sending an image file to FTP server. (“Sending Images to FTP Server — FTP client setting Menu” on page 46)

Image memory

Displays the image memory setting menu for recording a video/audio file in the built-in memory of the camera. (“Recording Images in Memory — Image memory setting Menu” on page 49)

FTP server

Displays the FTP Server menu for setting the FTP server function of the camera. (“Downloading Images from the Camera — FTP server setting Menu” on page 52)

Alarm output

Displays the alarm out setting menu for the alarm out terminal of the camera. (“Downloading Images from the Camera — FTP server setting Menu” on page 52)

Trigger

Displays the trigger setting menu for the operations when you click the trigger button in the main viewer. (“Setting the Operations from the Viewer Page — Trigger setting Menu” on page 54)

Schedule

Displays the schedule setting menu for FTP client function, e-Mail (SMTP) function, Image memory function and Alarm out function and so on. (“Setting the Schedule — Schedule setting Menu” on page 55)

Alarm buffer

Displays the alarm buffer setting menu for the buffer which records the image and audio on the alarm detection. (“Setting the Alarm Buffer — Alarm buffer setting Menu” on page 56)

Motion detection

Displays the Motion detection setting menu for the motion detection function built into the camera. (“Setting the Motion Detection Function — Motion detection setting Menu” on page 57)

DDNS

Displays the *DDNS setting menu for registration and change in DDNS service. (“Using DDNS Service — DDNS Setting Menu” on page 59)

* DDNS: Dynamic Domain Name Service

Configuring the System

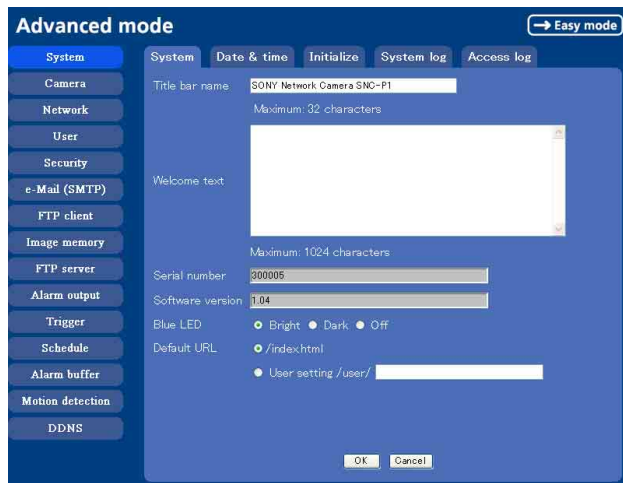
— System setting menu

When you click **System** on the Advanced mode menu, the System setting menu appears.

Use this menu to perform the principal settings of the software.

The System setting menu is composed of five tabs which are **System**, **Date & time**, **Initialization**, **System Log** and **Access Log**.

System Tab



Title bar name

Type a name to display on the title bar up to 32 characters. The characters typed here are displayed on the title bar of the Web browser.

Welcome text

Type a text to show on the welcome page, with up to 1024 characters in HTML format. Use the
 tag for a line break. (A line break is equivalent to 2 characters.)

Serial number

Displays the serial number of the camera.

Software version

The software version of this camera is displayed.

Blue LED

You can select the brightness of the blue LED on the top of the network camera.

Bright, **Dark** or **Off** can be selected.

Default URL

Select the homepage to be displayed when you enter the IP address of the camera in the web address box of the browser.

To display the homepage built in the camera Select **/index.html**.

To display your individual homepage

You can display your favorite homepage. Store the HTML file in the built-in flash memory using the Custom Homepage Installer included in the supplied CD-ROM.

For use of the Custom Homepage Installer, see page 72.

- 1 Select **User Setting/ user/**.
- 2 Type the path of the HTML file in the text box up to 64 characters.

Tip

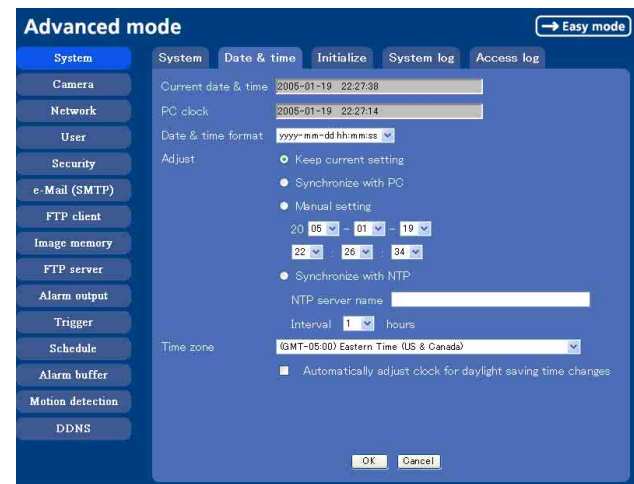
Even when you select **User Setting/ user/**, the home page inside the camera can be displayed by typing the following URL in the address box of the Web browser.

Example: When the IP address of the camera is set to 192.168.0.100
`http://192.168.0.100/en/index.html`

OK/Cancel

See “Buttons common to every setting menu” on page 29.

Date & time Tab



Current date & time

Displays the date and time set on the camera.

Note

After you have purchased the camera, be sure to check the date and time of the camera and set them if necessary.

PC clock

Displays the date and time set on your computer.

Date & time format

Select the format of date and time to be displayed on the main viewer from the drop-down list.

You can select from among **yyyy-mm-dd hh:mm:ss** (year-month-day hour:minute:second), **mm-dd-yyyy hh:mm:ss** (month-day-year hour:minute:second), and **dd-mm-yyyy hh:mm:ss** (day-month-year hour:minute:second).

Adjust

Select to set the day and time.

Keep current setting: Select if you do not need to set the date and time.

Synchronize with PC: Select if synchronizing the camera's date and time with those of the computer.

Manual setting: Select if you want to set the camera's date and time manually.

Select the lower 2-digits of year, month, date, hour, minutes and seconds from each drop-down list.

Synchronize with NTP: Select if synchronizing the camera's date and time with those of the time sever called NTP server (Network Time Protocol). Set the **NTP server name** and the **Interval**.

NTP server name

Type the host name or IP address of the NTP server, up to 64 characters.

Interval

Select the interval at which you want to adjust the camera's time referring to the NTP server' time, between 1 and 24 hours. The set interval is a guide, and does not indicate the exact time.

Note

The setting time may not accord with the exact time according to the network environment.

Time zone

Set the time difference from Greenwich Mean Time in the area where the camera is installed.

Select the time zone where the camera is installed from the drop-down list.

Automatically adjust clock for daylight saving time changes

When you select it, the clock is automatically adjusted according to the daylight saving time of the selected time zone.

Note

If the time zone selected on the **Time zone** menu is different from that set on the computer, the time is adjusted using the time zone difference and set on the camera.

OK/Cancel

See “Buttons common to every setting menu” on page 29.

Initialize Tab



Reboot

Reboots the camera.

Click **Reboot**, and the message “The SNC-P1 will be rebooted. Are you sure?” appears. Click **OK** to reboot the camera. It takes about two minutes to start again.

Factory default

Resets the camera to the factory settings.

Click **Factory default**, and the message “Set up data will be initialized. Are you sure?” appears. When you click **OK**, the network indicator and the Blue LED on the camera start to blink. After adjustments of the default settings have finished, the camera reboots automatically. Do not turn off the camera until the camera reboots.

Tip

The camera can also be reset to the factory settings by turning the power on of this unit while pressing the reset switch on the camera. For details, see the supplied Installation Manual.

Backup setting data

Saves the setting data of the camera in a file.

Click **Save**, and follow the instructions on the Web browser to specify the folder and save the setting data of the camera. The file name preset at the factory is “snc-p1.cfg.”

Restore setting

Loads the stored setting data of the camera.

Click **Browse** and select the file in which the setting data is stored. Then, click **OK**, and the camera is adjusted according to the loaded data and restarted.

Notes

- With Restore setting, some items in the Network setting menu (page 38) cannot be restored.
- The following item cannot be stored or restored with **Backup setting data** or **Restore setting**.
 - a homepage created using Custom Homepage Installer

Delete user setting URL

By pressing **Delete**, you can delete the home page recorded on the flash memory of the camera with Custom Homepage Installer (page 72).

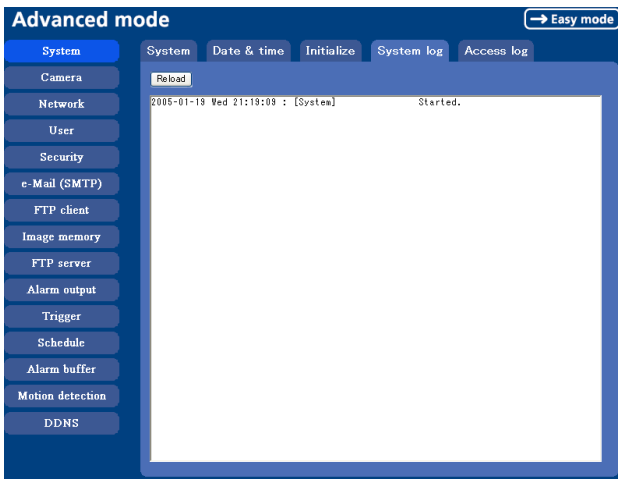
Firmware upgrade

Use this when upgrading the camera software. Click **Browse** and specify the file for upgrading, then click **OK**. The message “Upgrade firmware? Are you sure?” is displayed. Click **OK** and upgrading starts. After completion, the camera starts again.

Notes

- Use only the upgrade file special to this camera. If not, a problem may occur.
- Do not turn off the camera until the upgrading is completed.

System log Tab

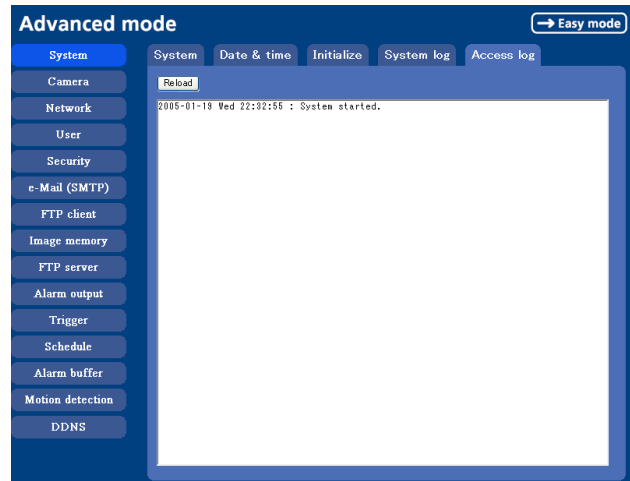


System log

The data of the software activity of the camera are recorded in this log. It includes data that are useful when a problem occurs.

Click **Reload** to reload the latest data.

Access log tab



Access log

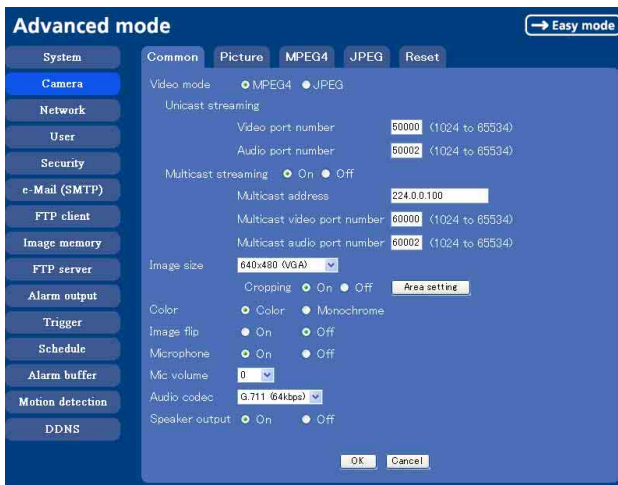
The access record of the camera is displayed. Click **Reload** to reload to the latest data.

Setting the Camera Image and Audio

— Camera setting Menu

When you click **Camera** on the Advanced mode menu, the Camera setting menu appears. Use this menu to set the functions of the camera. The Camera setting menu consists of 5 tabs: **Common**, **Picture**, **MPEG4**, **JPEG** and **Reset**.

Common Tab



Video mode

Select the output format of the camera image. **MPEG4** or **JPEG** can be selected.

Unicast streaming

Specify the transmission port number of the video data and audio data used when **UDP (Unicast)** is selected with the TCP/UDP transmission switching icon in the main viewer

Video port number: Specify the transmission port number of the video data. It is initially set to 50000. Specify an even number from 1024 to 65534.

Audio port number: Specify the transmission port number of the audio data. It is initially set to 50002. Specify an even number from 1024 to 65534.

Multicast streaming

Set whether the camera uses the Multicast streaming or not. It reduces sending load on the camera by making the computer of the same segment network (not above the router) receive the same transmitting data.

Select **On** to allow the multicast sending and **Off** not to allow.

When select **On**, set **Multicast address**, **Multicast video port number** and **Multicast audio port number** properly.

Multicast address: Type the multicast address used on the Multicast streaming.

Multicast video port number: Specify the video transmission port number used for the Multicast streaming.

Multicast audio port number: Specify the audio transmission port number used for the Multicast streaming.

Image size

You can select the image size sent from the network camera.

640 × 480 (VGA), **480 × 360**, **384 × 288**, **320 × 240 (QVGA)**, **256 × 192** or **160 × 120 (QQVGA)** can be selected.

Cropping

When the image size is set to **640 × 480 (VGA)**, you can crop a portion of the image and display the cropped image on the computer. With the cropping, the transmitting data size, and thus, the network load is reduced and a higher frame rate is obtained.

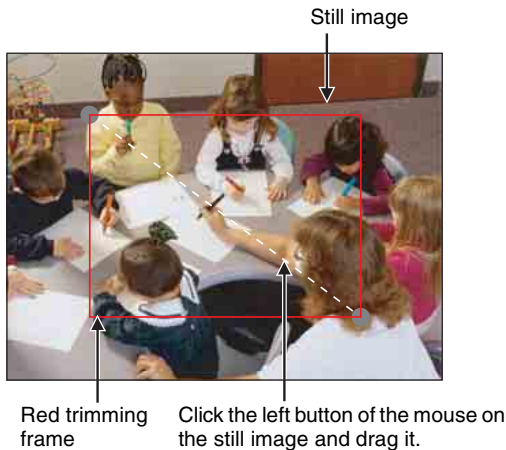
Select **On** to crop the image, or **Off**.


- When Cropping is set to **On**, Motion detection function does not work.
- While Cropping is set to **On**, the image of the composite video signal output from the video output connector of the camera may be distorted.

To crop an image

- 1 Set the **Image size** to **640 × 480(VGA)**. The **Cropping** is displayed.
- 2 Set the **Cropping** to **On** and click the **Area setting** button. The “Area setting” display appears.
- 3 Specify the cropping area.

Click the left button of the mouse on the still image and drag it diagonally. The red frame that appears as you drag indicates the cropping area.



- 4 Click **OK** at the bottom of the window. The cropped image is displayed on the main viewer.
- 5 To close the image, click  in the upper-right corner.


Color

Select **Color** or **Monochrome** for the image.

Image flip

The image can be displayed upside down. Select **On** when you fix the camera to the ceiling.


Microphone

Select whether you send the audio from the built-in microphone or from the  microphone input connector. Select **On** to send the audio from this network camera.

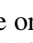
Note

When you change the Microphone setting, click **Refresh** on the Web browser to reflect the change when opening main viewer page.

Mic volume

Set the volume level of the audio input from the built-in microphone or the  microphone input connectors. It is adjustable from **-10** to **+10**.

Audio codec

Select the bit rate when you send the audio from the built-in microphone or from the  microphone input connectors. **G.711 (64kbps)**, **G.726 (40kbps)**, **G.726 (32kbps)**, **G.726 (24kbps)** or **G.726 (16kbps)** can be selected.

Note

When the bit rate is set to other than G.711(64bps), the audio is not output in case of using Java applet viewer.

Speaker output

Set whether you output the audio sent from the computer connected with the audio input connector to the speaker (active speaker for example) of the camera connected via line output connectors using SNC audio upload tool included in the supplied CD-ROM.

Select **On** to accept the audio data transmission from SNC audio upload tool.

OK/Cancel

See “Buttons common to every setting menu” on page 29.

Picture Tab

You can set the color condition, exposure, etc. of the camera.



White balance

Select the white balance mode from among **Auto**, **Indoor**, **Outdoor**, **One push WB**, and **Manual**.

Auto: to automatically adjust the white balance

Indoor: to adjust the white balance for shooting indoors under an incandescent lamp (about 3200 K)

Outdoor: to adjust the white balance for shooting outdoors (about 5800 K)

One push WB: The **One push trigger** button is displayed. Click the button to adjust the white balance instantly.

Manual: When you select this, **R gain** and **B gain** are displayed and you can set them.

Selectable gain values are from 0 to 255.

Exposure mode

Select the exposure mode of the camera from among **Full auto**, **Shutter priority**, and **Manual**. The setting items required for each setting appear.

Full auto: The camera executes the gain adjustment and the shutter speed adjustment automatically.

When you select this, **Flickerless mode**, **Slow shutter** and **Backlight compensation** are displayed and you can set them as you require.

Shutter priority: The camera executes the gain adjustment automatically and you can select the shutter speed. When you select it, **Backlight compensation** and **Shutter speed** are displayed and you can set them.

Manual: You can set the exposure manually. When you select it, **Shutter speed** and **Gain** are displayed and you can set them.

According to the Exposure mode, the following setting options are displayed.

Flickerless mode

If the image is flickering by the fluorescent light, select **On** to reduce it.

Note

This mode is available only for CE model.

Slow shutter

Set the Slow shutter. When **On** is selected, auto exposure setting including the long time exposure is set to suit to the brightness of the scene.

Backlight compensation

You can set **On** or **Off** of the exposure compensation. When you select **On**, the exposure compensation function starts to work.

Shutter speed

Select the shutter speed of the camera from the list box. Selectable values of the shutter speed are 1/10000, 1/4000, 1/2000, 1/1000, 1/500, 1/250, 1/100, 1/50, 1/30, 1/15, 1/8, 1/4, 1/2 and 1/1 second.

Gain

Select the gain from the list box. Selectable values of the gain are 0, 6, 12 and 18 dB.

Brightness

Tweaks the exposure set in the exposure mode. It is brighter when a large value is selected, and it is darker when a small value is selected. The value among **-5** to **5** can be set.

Saturation

Select the saturation in 7 steps, from **-3** to **3**. Selecting **3** gives the image with the highest saturation.

Sharpness

Select the sharpness in 7 steps, from **-3** to **3**. Selecting **3** gives the image with the highest sharpness.

Contrast

Select the contrast in 7 steps, from **-3** to **3**. Selecting **3** gives the image with the highest contrast.

OK/Cancel

See “Buttons common to every setting menu” on page 29.

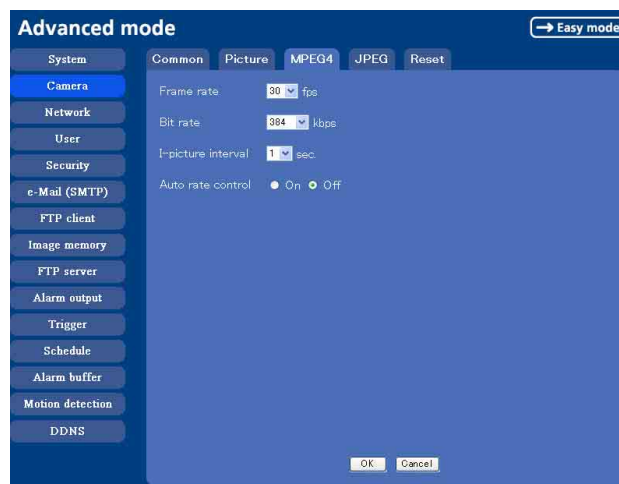
User preset

You can save the present settings in the camera as the custom, or you can load the settings saved in the camera.

Save: Click to save the present settings of the **Picture** tab.

Load: Click to load the saved settings. To use them, click **OK**.

MPEG4 Tab



Frame rate

Set the frame rate of the MPEG image. Selectable values are **1, 2, 3, 4, 5, 6, 8, 10, 15, 20, 25** and **30** fps.

“fps” is a unit indicating the number of frames transmitted per second.

Bit rate

Set the bit rate of MPEG image transmission for a line. Selectable values are **64, 128, 256, 384, 512, 768, 1024, 1536** and **2048** kbps.

Note

The selected frame rate and bit rate are a tentative value. The actual frame rate and bit rate may be different according to the image size, the shooting scene or the network condition.

I-picture interval

Set the I-picture inserting interval of MPEG4. I-picture is the compression data serving the basic point when the data compressed by MPEG4 is depressed. In the condition that errors tends to occur, such as the network environment variation, the distortion of the image is reduced by selecting a small value. The selectable values are **1, 2, 3, 4** and **5** seconds.

Auto rate control

This function adjusts the frame rate and the bit rate automatically so that the camera plays a smooth image to suit the connected computer environment. If **On** is selected, the rate of MPEG4 image is automatically adjusted.

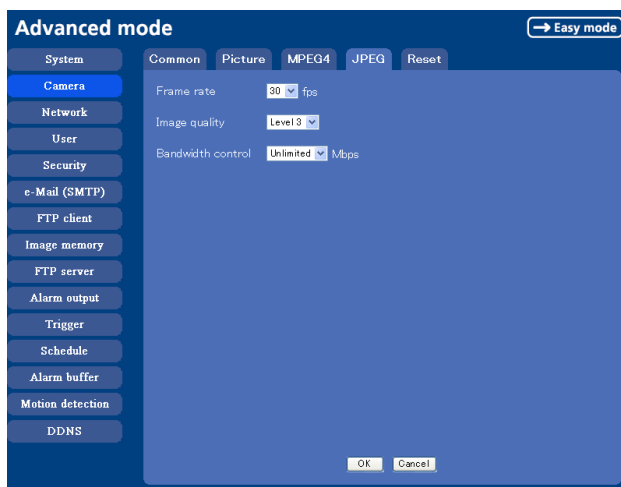
Note

The maximum transmission rate will be the values set in **Frame rate** and **Bit rate**.

OK/Cancel

See “Buttons common to every setting menu” on page 29.

JPEG Tab



Frame rate

Set the maximum frame rate of JPEG image that can be monitored on the computer. Selectable frame rates are **5, 6, 8, 10, 15, 20, 25** and **30** fps.

“fps” is a unit indicating the number of frames transmitted per second.

Image quality

Set the quality of JPEG image.

Selectable values are from **Level 1** to **Level 5**.

Selecting **Level 5** gives the image with the highest quality.

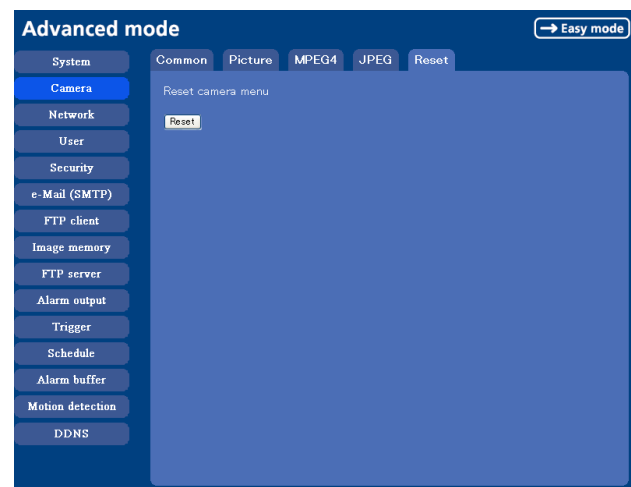
Bandwidth control

When the video mode is set to JPEG, the network bandwidth can be limited. Selectable bandwidths are **0.5, 0.6, 0.7, 0.8, 0.9, 1.0, 2.0, 3.0, 4.0**, and **Unlimited** Mbps. When you do not wish to limit the bandwidth, select **Unlimited**.

OK/Cancel

See “Buttons common to every setting menu” on page 29.

Reset Tab



Reset camera menu

Click **Reset**, and the message “Camera menu setting is reset to default. Are you sure?” is displayed. To reset to default, click **OK**.

Configuring the Network

— Network setting Menu

When you click **Network** on the Advanced mode menu, the Network setting menu appears.

Use this menu to configure the network to connect the camera and the computer.

The Network setting menu consists of 3 tabs: **Network**, **PPPoE** and **Dynamic IP address notification**.

Network Tab

This section provides the menus for connecting the camera through the network cable.



MAC address

Displays the MAC address of the camera.

Obtain an IP address automatically (DHCP)

DHCP server is installed on the network. Select it when the IP address is assigned by DHCP server. IP address is assigned automatically.

Note

When you set **Obtain an IP address automatically (DHCP)**, make sure that DHCP server is working on the internet.

Use the following IP address

Select this when a fixed IP address is set.

IP address

Type the IP address of the camera.

Subnet mask

Type the subnet mask.

Default gateway

Type the default gateway.

Obtain DNS server address automatically

Select this to obtain the address of DNS server automatically. It can be set only when **Obtain an IP address automatically (DHCP)** is selected.

Note

When you select “Obtain DNS server address automatically”, make sure that DHCP server is active on the network.

Use the following DNS server address

Select this when you set the fixed address as the IP address of DNS server.

Primary DNS server

Type the IP address of the primary DNS server.

Secondary DNS server

Type the IP address of the secondary DNS server, if necessary.

Host name

Type the host name of the camera to be transmitted to the DHCP server. This setting is valid only when **Obtain an IP address automatically (DHCP)** is selected in the Network tab.

Domain suffix

Type the domain suffix of the camera to be transmitted to the DHCP server. This setting is valid only when **Obtain an IP address automatically (DHCP)** is selected in the Network tab.

Note

The domain suffix is sent to the DHCP server as FQDN (Fully Qualified Domain Suffix) information when **Host name** is set.

HTTP port number

Normally select **80**. If you want to use a port number other than 80, select the text box and type a port number between 1024 and 65535.

Note

When you have set the **HTTP port number** to a number other than 80 in the Network setting menu or in the IP

Setup Program, access the camera again by typing the IP address of the camera on your Web browser as follows:

Example: when HTTP port number is set to 8000

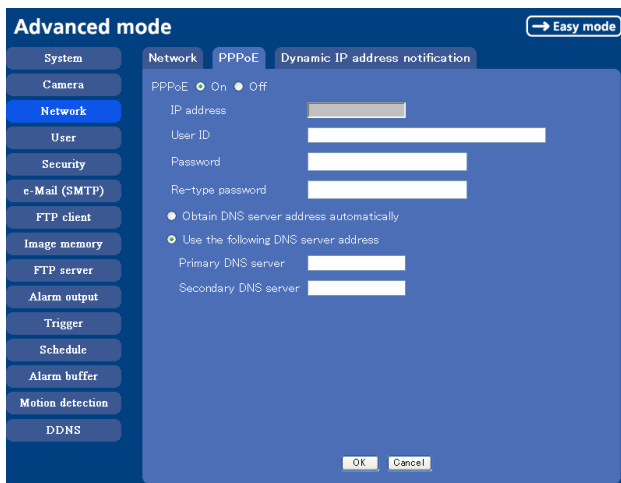


OK/Cancel

See “Buttons common to every setting menu” on page 29.

PPPoE Tab - Setting of PPPoE Connection

Use it when you connect the camera with PPPoE (Point-to-Point Protocol over Ethernet). PPPoE connection is the protocol that is widely used in xDSL (digital affiliate line such as ADSL, VDSL or SDSL) as the authentication and connection system.



PPPoE

Set whether you connect the camera using PPPoE function or not. When **On** is selected, PPPoE connection is used.

IP address

When you connect to the network by PPPoE function, IP address obtained at PPPoE connection is displayed.

User ID

Type the user ID for the authentication necessary for PPPoE connection. Type up to 64 characters.

Password

Type the password for the authentication necessary for PPPoE connection. Type confirm from 1 to 32 characters.

Re-type password

To confirm the password, re-type the password typed in the password box.

Obtain DNS server address automatically

Select to obtain the address of DNS server automatically.

Use the following DNS server address

Select to set the fixed address as the IP address of DNS server.

Primary DNS server

Type the IP address of the primary DNS server.

Secondary DNS server

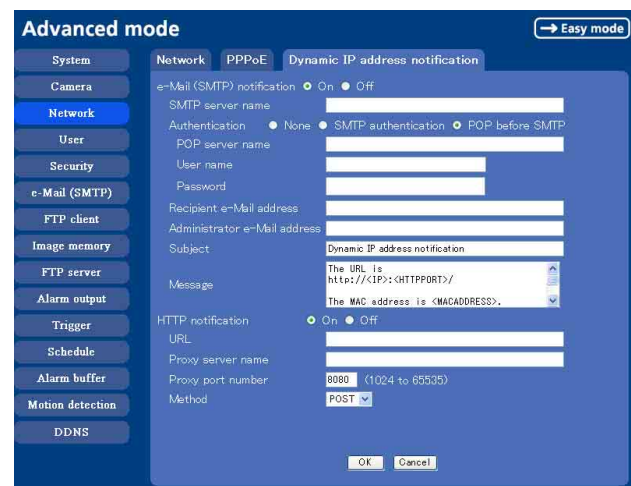
Type the IP address of the secondary DNS server, if necessary.

OK/Cancel

See “Buttons common to every setting menu” on page 29.

Dynamic IP address notification Tab — Notifying the IP Address

When the DHCP setting is set to **On** or PPPoE setting is set to **On** on the Network tab, you can send notification of the completion of the network settings using the SMTP or HTTP protocol.



e-Mail (SMTP) notification

Select **On** to send an e-Mail when the DHCP setting is completed.

SMTP server name

Type the name or IP address of the SMTP server to use for sending an e-Mail, up to 64 characters.

Authentication

Select the authentication required when you send an e-Mail.

None: Select if no authentication is required when an e-Mail is sent.

SMTP authentication: Select if authentication is required if an e-Mail is sent.

POP before SMTP: Select if **POP before SMTP** is required when an e-Mail is sent.

POP server name

It is necessary when the **POP before SMTP** is selected in **Authentication**.

Type the POP (receiving mail) server name up to 64 characters. Or type the IP address of the POP server. This setting is necessary when the SMTP server which sends e-Mails performs authentication using the POP user account.

User name, Password

Type the user name and Password of the user who has the mail account. This setting is necessary when the SMTP server which sends e-Mails performs authentication.

Recipient e-Mail address

Type the recipient e-Mail address up to 64 characters. You can specify only one recipient e-Mail address.

Administrator e-Mail address

Type the e-Mail address of the camera administrator, up to 64 characters. This is used as the reply address or the address for a system mail from the mail server.

Subject

Type the subject/title of the e-Mail up to 64 characters.

Message

Type the text of the e-Mail up to 384 characters. (A line break is equivalent to 2 characters.) You can describe the information of the acquired IP address, etc. using the special tags mentioned below.

HTTP notification

Select **On** to output a command to the HTTP server when the DHCP setting is completed. Using this function, you can configure a useful system, for example, to view the access log stored in the HTTP server or start an external CGI program.

URL

Specify the URL to send HTTP request, using up to 256 characters. The URL is normally written as follows:

```
http://ip_address[:port]/path?parameter
```

ip_address: Type the IP address or host name of the host to which you want to connect.

[:port]: Specify the port number to which you want to connect. If you want to use the well-known port number 80, you do not need to input this value.

path: Type the command.

parameter: Type the command parameter if necessary. You can use the special tags mentioned below for the parameters.

Proxy server name

When you send HTTP request via a proxy server, type the name or IP address of the proxy server, using up to 64 characters.

Proxy port number

Specify the port number when you send HTTP request via the proxy server. Set a port number between 1024 and 65535.

Method

Select the HTTP method **GET** or **POST**.

OK/Cancel

See "Buttons common to every setting menu" on page 29.

About the special tags

You can use the following five special tags to allow the notification of the settings acquired by the DHCP, such as an IP address. Type the tags in the parameter section of the URL that you described in the Message field of the HTTP.

<IP>

Use this tag to embed the IP address acquired by the DHCP in the text or parameter.

<HTTPPORT>

Use this tag to embed the specified HTTP server port number in the text or parameters.

<MACADDRESS>

Use this tag to embed the MAC address of the interface whose IP address you have acquired by the DHCP, in the text or parameter.

<MODELNAME>

Use this tag to embed the camera's model name (SNC-P1) in the text or parameter.

<SERIAL>

Use this tag to embed the camera's serial number in the text or parameter.

Setting the User — User setting Menu

When you click **User** on the Advanced mode menu, the User setting menu appears.

Use this menu to set the user names and passwords of Administrator and up to 9 kinds of users (User 1 to User 9), and the access right of each user.

User ID	User name	Password	Re-type password	FTP user	Viewer mode
Administrator	admin	*****	*****	<input checked="" type="checkbox"/>	Full
User 1				<input type="checkbox"/>	Full
User 2				<input type="checkbox"/>	Full
User 3				<input type="checkbox"/>	Full
User 4				<input type="checkbox"/>	Full
User 5				<input type="checkbox"/>	Full
User 6				<input type="checkbox"/>	Full
User 7				<input type="checkbox"/>	Full
User 8				<input type="checkbox"/>	Full
User 9				<input type="checkbox"/>	Full

Viewer authentication: On Off Full

Administrator, User 1 to 9

Specify **User name**, **Password**, **Re-type password**, **FTP user** and **Viewer mode** for each user ID.

User name

Type a user name between 5 and 16 characters.

Password

Type a password between 5 and 16 characters.

Re-type password

To confirm the password, retype the password typed in the Password box.

FTP user

Set whether allowed to log in to FTP server or not. Check the box if allowed to log in to FTP server.

Viewer mode

If the user is authenticated when the main viewer is displayed, you can select the viewer mode displayed after authentication.

Full: You can operate all functions in this mode.

Light: You can operate the functions other than the trigger button on the main viewer, TCP/UDP switching button on the main viewer, and the frame rate setting.

View: You can only monitor the camera image.

Viewer authentication

Set whether the user is authenticated or not when the main viewer is displayed.

When you select **On**, the main viewer is displayed to suit the authenticated user. When you select **Off**, select the view mode of the main viewer page which is displayed without authentication from **Full**, **Light** or **View**.

OK/Cancel

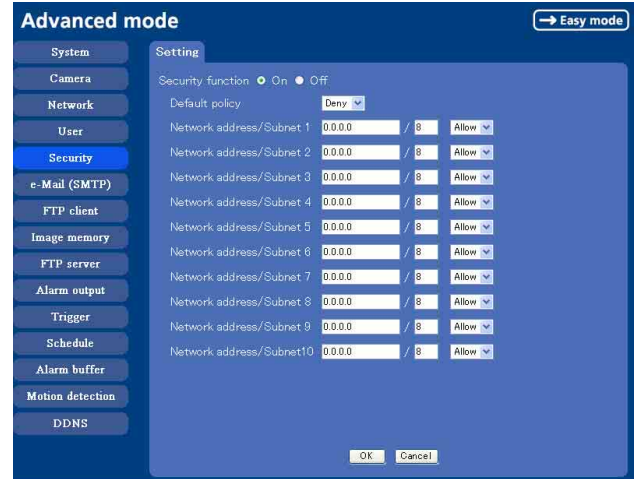
See “Buttons common to every setting menu” on page 29.

Setting the Security

— Security setting Menu

When you click **Security** on the Advanced mode menu, the Security setting menu appears.

Use this menu to limit the computers that can access the camera.



Security function

To activate the security function, select **On**.

If you do not wish to use the security function, select **Off**.

Default policy

Select the basic policy of the limit from **Allow** and **Deny** for the computers specified on the Network address/Subnet 1 to Network address/Subnet 10 menus below.

Network address/Subnet 1 to Network address/Subnet 10

Type the IP addresses and subnet mask values you want to allow or deny access to the camera.

You can specify up to 10 IP addresses and subnet mask values. For a subnet mask, type 8 to 32.

Select **Allow** or **Deny** from the drop-down list on the right for each IP address/subnet mask .

Tip

The subnet mask value represents the bit number from the left of the network address.

For example, the subnet mask value for “255.255.255.0” is 24.

If you set “192.168.0.0/24” and “Allow,” you can allow access from the computers having an IP address between “192.168.0.0” and “192.168.0.255”.

Note

You can access the camera even from a computer having an IP address whose access right is set to **Deny**, if you enter the user name and password set for the Administrator boxes in the User setting menu.

OK/Cancel

See “Buttons common to every setting menu” on page 29.

Sending an Image via mail — e-Mail (SMTP) setting Menu

When you click **SMTP** on the Advanced mode menu, the SMTP setting menu appears.

By using e-Mail (SMTP) function, you can send a mail with attached image file which has been shot linked with the external sensor input or with the built-in motion detection function. The image file can also be sent periodically.

The e-Mail (SMTP) setting menu is composed of three tabs: **Common**, **Alarm sending** and **Periodical sending**.

Common Tab — Setting the e-Mail (SMTP) Function

The screenshot shows the 'Advanced mode' interface for the e-Mail (SMTP) settings. The 'Common' tab is active, displaying the following fields and options:

- e-Mail (SMTP)**: On Off
- SMTP server name**: [Text input field]
- Authentication**: None SMTP authentication POP before SMTP
- POP server name**: [Text input field]
- User name**: [Text input field]
- Password**: [Text input field]
- Recipient e-Mail address**: [Text input field]
- Administrator e-Mail address**: [Text input field]
- Subject**: [Text input field]
- Message**: [Text area]

Buttons for **OK** and **Cancel** are located at the bottom right of the form.

e-Mail (SMTP)

Select **On** when you use the e-Mail (SMTP) function. The common setting options are displayed below.

If you do not wish to use the e-Mail (SMTP) function, select **Off** and click **OK**.

Notes

- During transmission of an image file via mail, the frame rate and operation performance of the monitor image of the main viewer decline.
- While the camera video mode is set to **MPEG4**, the image of the composite video signal output from the video output connector of the camera may be distorted during mail transmission.
- You cannot send an audio file by using the mail sending function.

SMTP server name

Type the SMTP server name up to 64 characters, or the IP address of the SMTP server.

Authentication

Select the authentication required when you send an e-Mail.

None: Select if no authentication is required when an e-Mail is sent.

SMTP authentication: Select if authentication is required when an e-Mail is sent.

POP before SMTP: Select if POP before SMTP authentication is required when an e-Mail is sent.

POP server name

It is necessary when the **POP before SMTP** is selected in **Authentication**.

Type the POP (receiving mail) server name up to 64 characters, or type the IP address of the POP server. This setting is necessary when the SMTP server which sends e-mails performs authentication using the POP user account.

User name, Password

Type the user name and Password of the user who has the mail account. This setting is necessary when the SMTP server which sends e-mails performs authentication.

Recipient e-Mail address

Type the recipient e-Mail address up to 64 characters. You can specify up to three recipient e-Mail addresses.

Administrator e-Mail address

Type the Administrator e-Mail address up to 64 characters.

This address is used for reply mail and sending system messages from the SMTP server.

Subject

Type the subject/title of the e-Mail up to 64 characters. When **Alarm sending** of the alarm tab is set to **ON**, the mail sent due to the alarm detection will indicate the type of alarm in the subject. **[SI]** is added for sensor input detection, and **[MD]** is added for motion detection.

Message

Type the text of the e-Mail up to 384 characters. (A line break is equivalent to 2 characters.)

OK/Cancel

See “Buttons common to every setting menu” on page 29.

Alarm sending Tab — Setting the mail sending mode when detecting the alarm

Set to send the mail with connection to the alarm detection by the external sensor input or by the built-in motion detection function.



Alarm sending

Select **On** to set to send mail with connection to the alarm detection.

File attachment

Set whether an image file is to be attached to the mail or not.

When **On** is selected, the image file made by the settings below is attached. When **Off** is selected, only the message is sent.

Image file name

Type the file name you want to assign to the image to attach a mail. You can use up to 10 alphanumeric, - (hyphen) and _ (underscore) for naming.

Suffix

Select a suffix to add to the file name.

None: No suffix is added. The Image file name is assigned to the image to be sent via an e-Mail.

Date & time: The date & time suffix is added to the Image file name.

The date/time suffix consists of lower two-digits of year (2 digits), month (2 digits), date (2 digits), hour (2 digits), minute (2 digits), second (2 digits), and consecutive number (2 digits), thus 14-digit number is added to the file name.

Sequence number: A consecutive number of 10 digits between 0000000001 and 4294967295 and two fixed digits 00 is added to the Image file name.

Tip

A consecutive number added to **Date & time** and **Sequence number** is used to identify each of multiple files created with one alarm event.

Sequence number clear

Click **Clear** to reset the Sequence number suffix to 1.

Alarm

Select the connected alarm.

Sensor input: The external sensor which is connected to the sensor input of the camera I/O port.

Motion detection: Click **Motion detection** button, and the Motion detection setting menu is displayed. You can set the motion detection function (page 57).

Note

Motion detection works only when the camera Video mode is set to **MPEG4** and the **Cropping** is set **Off**.

Effective period

Set the period when the alarm detection is effective.

Always: The alarm detection is always effective.

Schedule: You can specify the period when the alarm detection is effective in the schedule setting in the other section.

Click **Schedule** and the setting menu for the Effective period is displayed. (“Setting the Schedule — Schedule setting Menu” on page 55)

OK/Cancel

See “Buttons common to every setting menu” on page 29.

Periodical sending Tab — Setting the periodical mail sending mode

You can set to send mails periodically.



Periodical sending

Select **On** when you want to send mails periodically. If you select **Off**, Periodical sending is not executed.

Image file name

Type the file name of the image attached to the mail up to 10 alphanumeric, - (hyphen) and _ (under score).

Suffix

Select a suffix added to the file name used when the mail is sent.

None: The name of the sent file will be the Image file name.

Date & time: The date & time suffix is added to the Image file name.

The date & time suffix consists of lower two-digits of year (2 digits), month (2 digits), date (2 digits), hour (2 digits), minute (2 digits) and second (2 digits), and consecutive number (2 digits), thus 14-digit number is added to the file name.

Sequence number: A consecutive number of 10 digits between 0000000001 and 4294967295 and two fixed digits 00 is added to the Image file name.

Sequence number clear

Click **Clear** and the suffix of the sequence number returns to 1.

Interval

Type the interval at which you want to send a mail periodically. You can set the hour (H) and minutes (M) between 30 minutes and 24 hours (one day).

Effective period

Set the period when the periodical sending is effective.

Always: The periodical sending is always effective.

Schedule: You can specify the period when the periodical sending is effective in the schedule setting in the other section.

Click **Schedule** and the setting menu for the effective period is displayed. (“Setting the Schedule — Schedule setting Menu” on page 55)

OK/Cancel

See “Buttons common to every setting menu” on page 29.

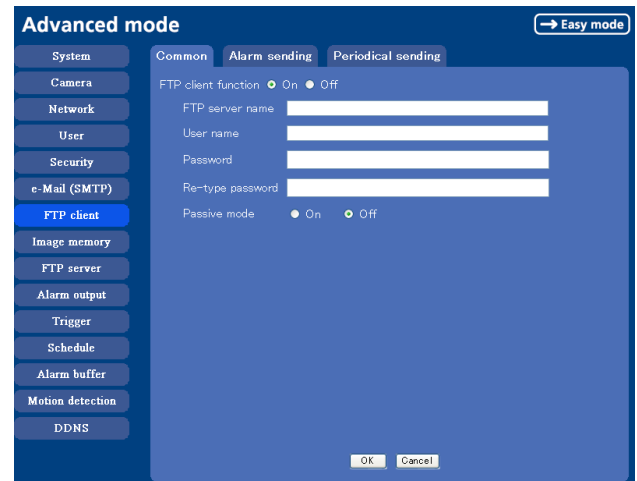
Sending Images to FTP Server

— FTP client setting Menu

When you click **FTP client** on the Advanced mode menu, the FTP client setting menu appears.

Use this menu to set up for capturing and sending still images to an FTP server. By using FTP client function, you can send the image and audio file which has been shot and recorded linked with the external sensor input or with the built-in motion detection function to FTP server. The image file can also be sent periodically. FTP client setting menu is composed of three tabs **Common**, **Alarm sending** and **Periodical sending**.

Common Tab — Setting the FTP Client Function



FTP client function

To activate the FTP client function, select **On**. The FTP client setting page appears.

When you do not wish to use the FTP client function, select **Off**.

Note

The frame rate and operability on the main viewer may decrease while a file is being transmitted by the FTP client function.

FTP server name

Type the FTP server name to upload still images up to 64 characters, or the IP address of the FTP server.

User name

Type the user name for the FTP server.

Password

Type the password for the FTP server.

Re-type password

To confirm the password, type the same characters as you typed in the Password box.

Passive mode

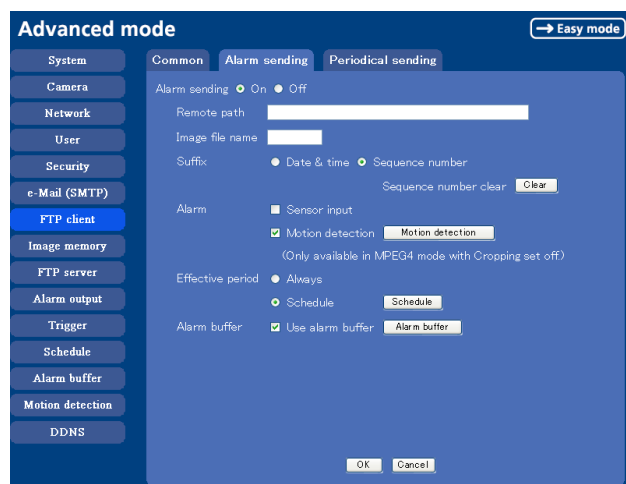
Set whether you use the passive mode of FTP server or not when connecting to FTP server. Select **On** to connect to FTP server using the passive mode.

OK/Cancel

See “Buttons common to every setting menu” on page 29.

Alarm sending Tab — Setting the FTP client action when detecting the alarm

Set to forward the image and audio file to the specified FTP server linked with the alarm detection by the external sensor input or by the built-in motion detection function.



Alarm sending

Select **On** to send the image and audio file to FTP server linked with the alarm detection.

Remote path

Type the path to the destination up to 64 characters.

Image file name

Type the file name you want to assign to the images when sending to the FTP server. You can use up to 10 alphanumeric characters, - (hyphen) and _ (underscore) for naming.

Suffix

Select a suffix to add to the file name.

Date & time: The date & time suffix is added to the Image file name.

The date/time suffix consists of lower two-digits of year (2 digits), month (2 digits), date (2 digits), hour (2 digits), minute (2 digits) and second (2 digits), and consecutive number (2 digits), thus 14-digit number is added to the file name.

Sequence number: A consecutive number of 10 digits between 0000000001 and 4294967295 and an consecutive 2 digits number is added to the Image file name.

Tip

A consecutive number added to **Date & time** and **Sequence number** is used to identify each of multiple files created with one alarm event.

Sequence number clear

Click **Clear** to reset the Sequence number suffix to 1.

Alarm

Select the connected alarm.

Sensor input: The external sensor which is connected to the sensor input of the camera I/O port.

Motion detection: Click **Motion detection** button, and the Motion detection setting menu is displayed. You can set the motion detection function (page 53).

Note

Motion detection works only when the Video mode is set to **MPEG4** and the **Cropping** is set to **Off**.

Effective period

Set the period when the alarm detection is effective.

Always: The alarm detection is always effective.

Schedule: You can specify the period when the alarm detection is effective in the schedule setting in the other section.

Click **Schedule** and the setting menu for the Effective period is displayed. (“Setting the Schedule — Schedule setting Menu” on page 55)

Alarm buffer

Select **Use alarm buffer** when you forward the image/ audio of before and after the alarm detection (pre-alarm, post-alarm).

If you do not select it, only the image of the moment of the alarm detection is forwarded.

Click **Alarm buffer** to display the Alarm buffer setting menu.

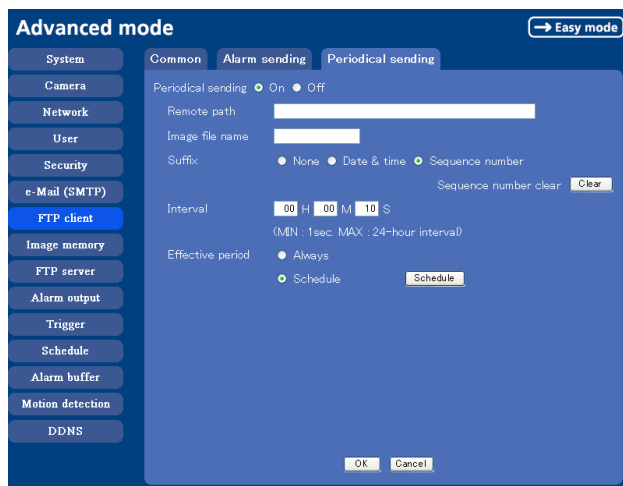
For details, see “Setting the Alarm Buffer — Alarm buffer setting Menu” on page 56.

OK/Cancel

See “Buttons common to every setting menu” on page 29.

Periodical sending Tab — Setting the Periodical FTP Client Activity

You can set to send an image file to FTP server periodically.



Periodical sending

Select **On** when you want to use periodical sending. If you select **Off**, Periodical sending is not executed.

Remote path

Type the remote path up to 64 characters.

Image file name

Type the file name of the image sent to FTP server up to 10 alphanumeric characters, - (hyphen) and _ (under score).

Note

You cannot send the audio file by using the periodical sending function of FTP.

Suffix

Select a suffix to be added to the file name sent to FTP server.

None: The name of the sent file will be the Image file name.

Date & time: The date & time suffix is added to the Image file name.

The date & time suffix consists of lower two-digits of year (2 digits), month (2 digits), date (2 digits), hour (2 digits), minute (2 digits) and second (2 digits), and consecutive number (2 digits), thus 14-digit number is added to the file name.

Sequence number: A consecutive number of 10 digits between 0000000001 and 4294967295 and two fixed digits 00 is added to the Image file name.

Sequence number clear

Click **Clear** and the suffix of the sequence number returns to 1.

Interval

Type the interval at which you want to send images to the FTP server periodically. You can set the hour (H), minutes (M) and seconds (S) between 1 second and 24 hours (one day).

Note

The actual interval may be longer than the set value, depending on the image size, image quality setting, bit rate and the network environments.

Effective period

Set the period when the periodical sending is effective.

Always: The periodical sending is always effective.

Schedule: You can specify the period when the periodical sending is effective in the schedule setting in the other section.

Click **Schedule** and the setting menu for the effective period is displayed. (“Setting the Schedule — Schedule setting Menu” on page 55)

OK/Cancel

See “Buttons common to every setting menu” on page 29.

Recording Images in Memory

— Image memory setting Menu

When you click **Image memory** on the Advanced mode menu, the Image memory setting menu appears.

By using the image memory function, you can record the image and audio file, which has been shot being linked with the external sensor input or with the built-in motion detection function, to the built-in memory (about 8 MB) of the camera. The image file can also be recorded periodically.

The recorded image and audio files can be found or downloaded to the computer using the FTP server function. (See “Downloading Images from the Camera — FTP server setting Menu” on page 52.)

Image memory setting menu is composed of three tabs **Common**, **Alarm recording** and **Periodical recording**.

Notes

- The image and audio files recorded in the built-in memory will be erased when the power of the camera is turned off.
- The frame rate and operability on the main viewer may decrease during image storage in the built-in memory.
- When the Overwrite is set to **On**, a warning mail is not sent to the Administrator.

Common Tab — Setting the Image memory Function

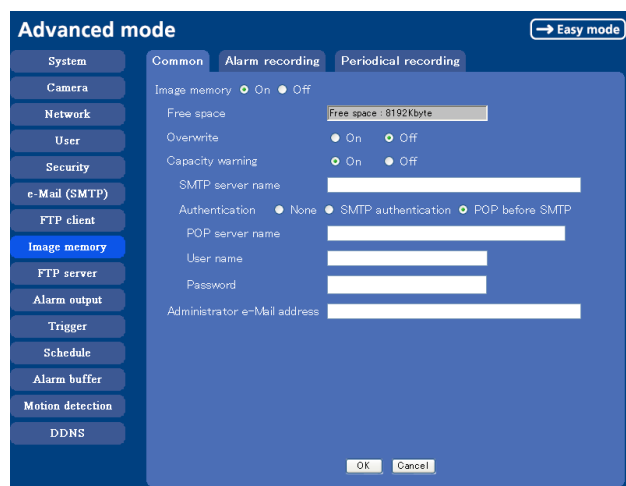


Image memory

Set whether you use the Image memory function or not. When you select **On**, the Common setting options are displayed in the below. If you do not use it, select **Off** and click **OK**.

Free space

Shows the current free space of the builtin memory.

Overwrite

Select to overwrite the file or not when there is insufficient memory space to record the image.

Select **On** to allow overwriting. The oldest file or folder is overwritten first.

Select **Off** to prohibit overwriting. In this case, a new file cannot be stored.

Capacity warning

Select **On** to send a warning mail to the Administrator when the built-in memory space is low or the memory is full. Select **Off** if you do not want to send a warning mail.

Note

When the Overwrite is set to **On**, a warning mail is not sent to the Administrator.

SMTP server name

Type the name of the SMTP server to use for sending an e-Mail, up to 64 characters.

Otherwise type the IP address of SMTP mail server.

Authentication

Select the authentication required if you send a mail.

None: Select if no authentication is required when an e-mail is sent.

SMTP authentication: Select if authentication is required when an e-Mail is sent.

POP before SMTP: Select if POP before SMTP authentication is required when an e-Mail is sent.

POP server name

This is necessary when **POP before SMTP** is selected in **Authentication**.

Type POP (receiving mail) server name up to 64 characters. Otherwise type the IP address of POP server. This setting is necessary when SMTP server that sends a mail authenticates using the account of POP user.

User name, password

Type the user name and the password of the user who has the mail account. This setting is necessary when SMTP server that sends a mail authenticates.

Administrator e-Mail address

Type the e-Mail address of the recipient of the warning mail (e-Mail address of the camera Administrator), up to 64 characters.

OK/Cancel

See “Buttons common to every setting menu” on page 29.

Alarm recording Tab — Setting the Image Memory Function when Detecting the Alarm

You can set to record the image and audio file to the built-in memory linked with the external sensor input or with the built-in motion detection function.



Alarm recording

Select **On** to set to record the image and audio file to the built-in memory linked with the external sensor input or with the built-in motion detection function.

Image file name

Type the file name you want to assign to the images when saving in the built-in memory. You can use up to 10 alphanumeric characters, - (hyphen) and _ (underscore) for naming.

Suffix

Select a suffix to add to the file name.

Date & time: The Date & time suffix is added to the Image file name.

The Date & time suffix consists of lower two-digits of year (2 digits), month (2 digits), date (2 digits), hour (2 digits), minute (2 digits), second (2 digits) and consecutive number (2 digits), thus 14-digit number is added to the file name.

Sequence number: A consecutive number of 10 digits between 0000000001 and 4294967295 and an consecutive 2 digits number is added to the Image file name.

Tip

A consecutive number added to **Date & time** and **Sequence number** is used to identify each of multiple files created with one alarm event.

Sequence number clear

Click **Clear** to reset the Sequence number suffix to 1.

Alarm

Select the connected alarm.

Sensor input: The external sensor which is connected to the sensor input of the camera I/O port.

Motion detection: Click **Motion detection** button, and the Motion detection setting page is displayed. You can set the motion detection function (page 53).

Note

Motion detection works only when the Video mode is set to **MPEG4** and the **Cropping** is set to **Off**.

Effective period

Set the period when the alarm detection is effective.

Always: The alarm detection is always effective.

Schedule: You can specify the period when the alarm detection is effective in the schedule setting in the other section.

Click **Schedule** and the setting menu for the effective period is displayed. (“Setting the Schedule — Schedule setting Menu” on page 55)

Alarm buffer

Select **Use alarm buffer** when you forward the image/audio of before and after the alarm detection (pre-alarm, post-alarm).

If you do not select it, only the image of the moment of the alarm detection is forwarded.

Click **Alarm buffer** to display the Alarm buffer setting menu.

For details, see “Setting the Alarm Buffer — Alarm buffer setting Menu” on page 56.

OK/Cancel

See “Buttons common to every setting menu” on page 29.

Periodical recording Tab — Setting the Periodical recording mode

You can set to record the image file to the built-in memory periodically.



Periodical recording

Select **On** when you want to use periodical recording. If you select **Off**, the Periodical recording is not executed.

Image file name

Type the file name of the image recorded to the built-in memory up to 10 alphanumeric, - (hyphen) and _ (underscore).

Note

You cannot send the audio file by using the periodical recording function.

Suffix

Select a suffix to add to the file name.

None: The recording file name will be the Image file name.

Date & time: The date & time suffix is added to the Image file name.

The date/time suffix consists of lower two-digits of year (2 digits), month (2 digits), date (2 digits), hour (2 digits), minute (2 digits), second (2 digits), and consecutive number (2 digits), thus 14-digit number is added to the file name.

Sequence number: A consecutive number of 10 digits between 0000000001 and 4294967295 and two fixed digits 00 is added to the Image file name.

Sequence number clear

Click **Clear** and the suffix of the sequence number returns to 1.

Interval

Type the interval at which you want to record an image in the built-in memory periodically. You can set the hour (H), minutes (M) and seconds (S) between 1 second and 24 hours (one day).

Note

The actual interval may be longer than the set value, depending on the image size or the network environments.

Effective period

Set the period when the periodical recording is effective.

Always: The periodical recording is always effective.

Schedule: You can specify the period when the periodical recording is effective in the schedule setting in the other section.

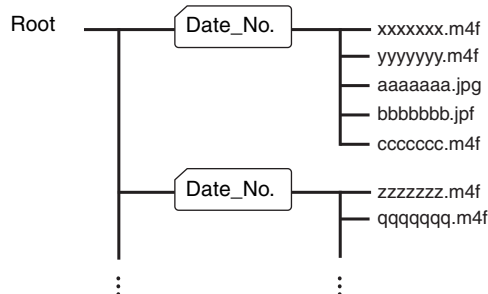
Click **Schedule** and the setting menu for the effective period is displayed. (“Setting the Schedule — Schedule setting Menu” on page 55)

OK/Cancel

See “Buttons common to every setting menu” on page 29.

Folder structure of image memory

When the image memory function is used, the images are recorded with the following folder structure.



A represents a folder created automatically. The Date_No. folder has a 9-digit name consisting of the last two digits of the year (2 digits), month (2 digits), day (2 digits), underscore and sequence number (2 digits). In the built-in memory, one folder automatically created can store image files of about 1 MB. If the size of the image files exceeds that value, a new folder is created automatically to continue recording.

About the extension of a file

A file to be recorded/sent using the image memory function or the FTP client function has one of the

following three extensions depending on the video mode setting and the recording/sending settings of the camera.

.m4f: Represents the **MPEG4** video mode.

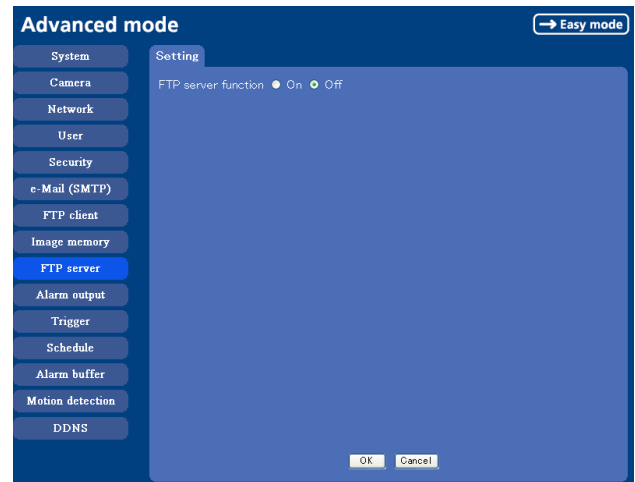
.jpf: Represents the **JPEG** video mode when **Use alarm buffer** is checked in the alarm recording/alarm sending menu. This file includes audio data.

.jpg: Represents the **JPEG** video mode when **Use alarm buffer** is not checked in the alarm recording/alarm sending menu. This file can be viewed with a normal image viewer.

The SNC video player (page 71) allows playing of “.m4f” and “.jpf” files.

Downloading Images from the Camera — FTP server setting Menu

When you click **FTP server** on the Advance mode menu, the FTP server setting menu appears. Use this menu to set up for the FTP server function which finds a specified image and audio file stored in the built-in memory of the camera (about 8 MB) or download the still image file from the camera.



FTP server function

To activate the FTP server function, select **On** and click **OK**.

When you do not use the FTP server function, select **Off** and click **OK**.

OK/Cancel

See “Buttons common to every setting menu” on page 29.

Note

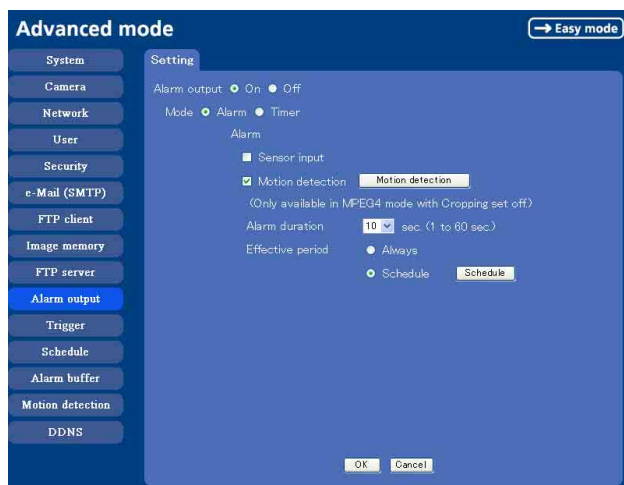
Note the followings when log in to FTP server of the camera using the FTP client software on the computer.

- The frame rate and the operativity of the monitor window in the main viewer will decline.
- While recording the image using the Image memory function, you cannot delete the recording folder.
- When the recorded image or audio file is deleted, the camera counts the free space of the built-in memory again when logging off.

Setting the Alarm Output

— Alarm output setting Menu

When you click **Alarm output** on the Advanced mode menu, the Alarm output setting menu appears. You can set in this menu to control the alarm out of I/O port on the rear of the camera linked to the alarm detection and the timer.



Alarm output

To activate the Alarm output function, select **On**. The basic setting options are displayed below. When you do not use the Alarm output function, select **Off**.

Mode

Select the mode of the Alarm output function.

Alarm: Controls alarm output by synchronizing with an external sensor input or the built-in activity detection function.

Timer: Controls alarm output by the timer.

Alarm

This item is displayed when **Mode** is set to **Alarm**. Select the alarm to link the alarm output function. If the selected alarm is detected, the alarm output status changes.

Sensor input: External sensor connected to sensor input of the camera I/O port

Motion detection: To set the motion detection function, click **Motion detection**. The Motion detection setting page appears (see page 57).

Note

The motion detection function can activate or be set only when the Video mode of the camera is set to **MPEG4** and the **Cropping** is set **Off**.

Alarm duration

Select the duration for which the alarm output is short-circuited between 1 and 60 sec.

Effective period

This item is displayed when **Mode** is set to **Alarm**.

Set the period while the alarm detection is effective.

Always: The alarm detection is always effective.

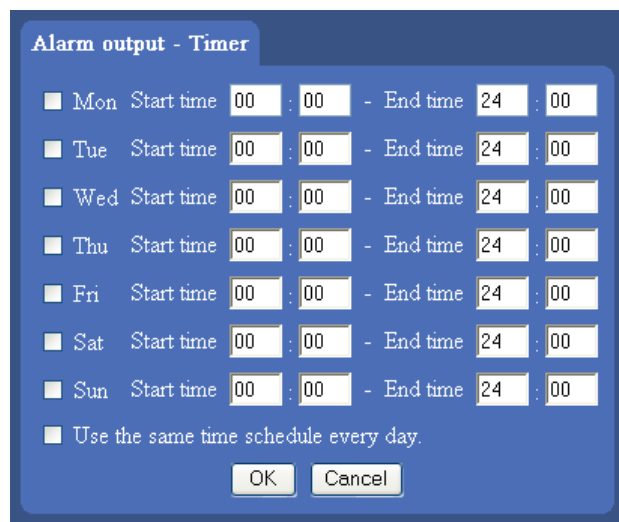
Schedule: You can specify the period when the alarm detection is effective in the schedule setting in the other section.

Click **Schedule** and the setting menu for the effective period is displayed. (“Setting the Schedule — Schedule setting Menu” on page 55)

Schedule

This item is displayed when **Mode** is set to **Timer**.

Click **Schedule** and the setting menu for the effective period is displayed. (“Setting the Schedule — Schedule setting Menu” on page 55)




OK/Cancel

See “Buttons common to every setting menu” on page 29.


Setting the Operations from the Viewer Page — Trigger setting Menu

Click **Trigger** on the Advanced Mode menu to display the Trigger Setting menu.

In this menu, you will select the activities when  Trigger icon is clicked on the main viewer.



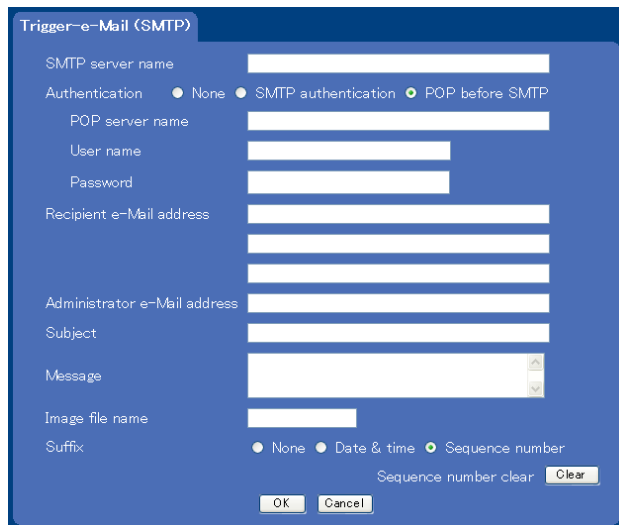
e-Mail (SMTP)

Checking this box allows you to select **e-Mail** from the trigger drop-down list in the main viewer. By selecting **e-Mail** and clicking , a still image of the moment you click is captured, and your e-mail with the image file attached is sent to the specified mail address.


When you click **e-Mail (SMTP)** button, the **Trigger (e-Mail) setting** menu is displayed. You can set necessary options here. The setting options and setting procedures are the same as those of the e-Mail (SMTP) setting menu (page 43).

Note

While the Video mode is set to **MPEG4**, the image of the composite video signal output from the video output connector of the camera may be distorted during mail transmission.



FTP client

Checking this box allows you to select **FTP** from the trigger drop-down list in the main viewer. By selecting **FTP** and clicking , a still image of the moment you click is captured, and the image file is sent to the FTP server.

When you click **FTP client** button, the **Trigger (setting) FTP client** menu is displayed. You can set necessary options here. The setting options and setting procedures are the same as those of the FTP client setting menu (page 46).

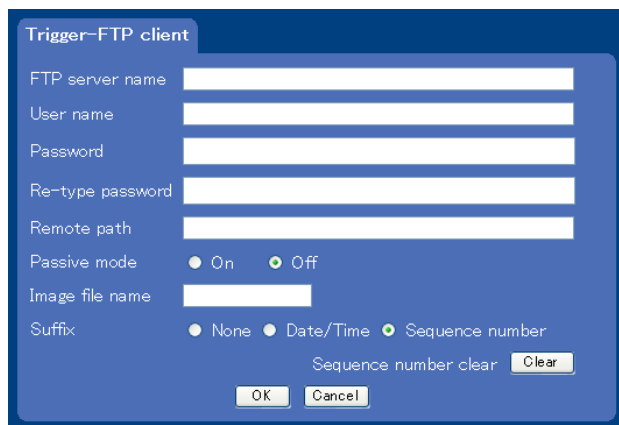

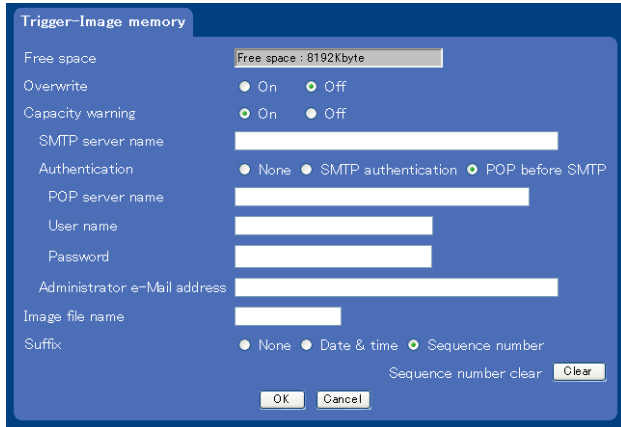


Image memory


Checking this box allows you to select **Image memory** from the trigger drop-down list in the main viewer.

By selecting **Image memory** and clicking , a still image of the moment you click is captured, and the image file is recorded in the built-in memory.

When you click **Image memory** button, the **Trigger (setting) Image memory** menu is displayed. You can set necessary options here. The setting options and setting procedures are the same as those of the Image Memory setting menu (page 49).



Alarm output

Checking this box allows you to select **Alarm output** from the trigger drop-down list in the main viewer. You can control On (short circuit) or Off (open) by selecting **Alarm output** and clicking the .

OK/Cancel

See “Buttons common to every setting menu” on page 29.

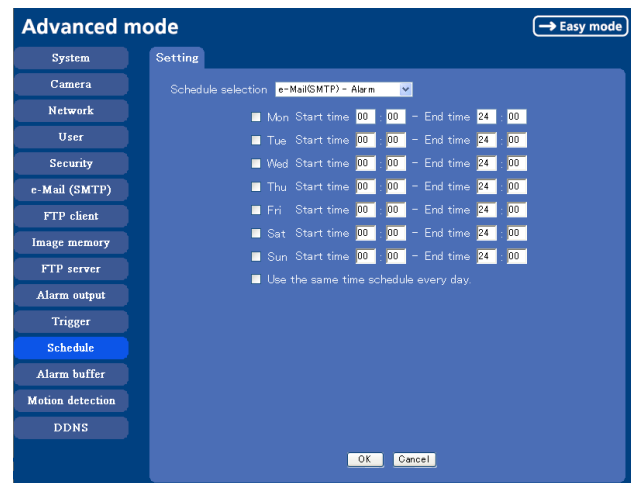
Setting the Schedule

— Schedule setting Menu

When you click **Schedule** on the Advanced mode menu, the Schedule setting menu appears.

This is the same menu as the setting menu which is displayed when you click **Schedule** to set Effective period and Schedule in FTP client setting menu, e-Mail (SMTP) setting menu, Image memory setting menu, Alarm out setting menu and so on.

Example: When setting e-Mail (SMTP) (the alarm sending) in the Schedule setting menu



Schedule selection

Select the list box to specify the schedule you want to set. **e-Mail (SMTP) – Alarm, e-Mail (SMTP) – Periodical, FTP – Alarm, FTP – Periodical, Image memory – Alarm, Image memory – Periodical, Alarm output – Alarm** or **Alarm output – Timer** can be selected.

The time period on the right of the checked day is the effective period of the schedule.

Mon (Monday) to Sun (Sunday)

The time period on the right of the checked day is the effective period of the schedule.

Start time, End time

Specify the **Start time** and the **End time**.

Use the same time schedule every day

When this is checked, the **Start time** and **End time** set to **Mon (Monday)** are applied to all days. In this case, the **Start time** and **End time** of the other days than **Mon (Monday)** cannot be input.

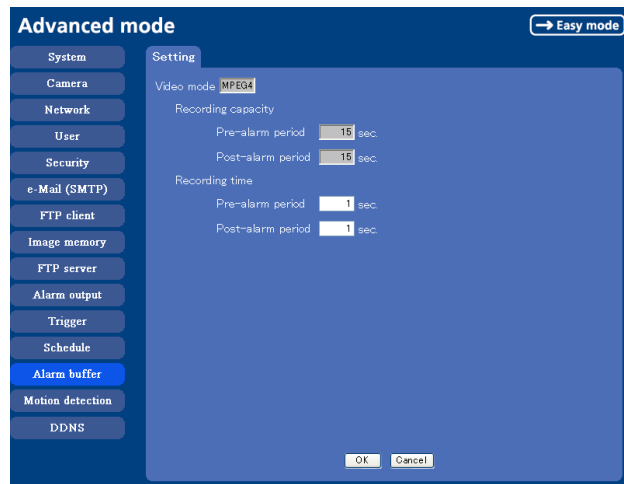
OK/Cancel

See “Buttons common to every setting menu” on page 29.

Setting the Alarm Buffer

— Alarm buffer setting Menu

When you click **Alarm buffer** on the Advanced mode menu, the Alarm buffer Setting menu appears. You can set the Pre-alarm image and audio (the image and audio before the alarm detection) and the Post - alarm image and audio. These can be set when **Alarm sending** or **Alarm recording** of FTP client setting menu or Image memory setting menu is set to **On**, and besides when **Use alarm buffer** is selected.



Note

The value of Recording capacity differs depending on Image size, Bit rate (for MPEG4) and Image quality (for JPEG) in the camera setting menu.

OK/Cancel

See “Buttons common to every setting menu” on page 29.

Video mode

The Video mode setting in the Common tab of the Camera setting menu is displayed.

MPEG4: Shows the present output format of the camera is MPEG4.

JPEG: Shows the present output format of the camera is JPEG.

Recording capacity

Displays the maximum recording capacity of alarm buffer in the present camera setting of the video mode, image size, bit rate and frame rate.

Pre-alarm period: Displays the maximum recording capacity of image/audio before the alarm detection.

Post-alarm period: Displays the maximum recording capacity of image/audio after the alarm detection.

Recording time

Set the recording time for the Pre-alarm image/audio and Post alarm image/audio.

Pre alarm period: Type the recording time of the image/audio before the alarm detection.

Post alarm period: Type the recording time of the image/audio after the alarm detection.

Setting the Motion Detection Function — Motion detection setting Menu

When you click **Motion detection** on the Advanced mode menu, the Motion detection setting menu appears. You can set the conditions to activate the built-in motion detection function in this menu.

This is the same menu with the setting menu which is displayed when you click **Motion detection** in Alarm sending of e-Mail (SMTP) setting menu, Alarm sending or FTP client setting menu, Alarm recording of Image memory setting menu and so on.

Notes

- The motion detection function can activate or be set only when the Video mode of the camera is set to **MPEG4** and the **Cropping** is set **Off**.
- Before actual use, perform an operation test and confirm that the Motion detection function works correctly.



Monitor display

You can monitor the moving image and set the detection Window.

Window 1 to 4 check box

When you check it, the specified Window is displayed on the monitor display.

Threshold slider bar

Set the Threshold level so as to judge whether there has been any motion in the camera image or not. You can change the Threshold level displayed in the Motion detection indicator.

Motion detection indicator

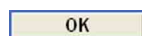
The moving level of the present shooting image inside the specified Window is shown in the graph. The even line shows the threshold level for Motion detection which will be a guide to set the sensitivity properly.

Sensitivity slider bar

Use it to set the detection sensitivity of the monitoring image.

When the slider bar is moved to the left end, the sensitivity will be 0 and any motion will not be detected. The right end is the maximum sensitivity.

OK button



Click to send the set values to the camera and confirm the settings.

Setting the Motion Detection Area, Sensitivity and Threshold level

Set the motion detection working area, the sensitivity and the threshold level as follows:

- 1 Check Window 1 check box. Window 1 is shown on the monitor display.
- 2 Settle Window 1 in the area you want to set Motion detection. Click and drag Window 1 to move it or change the size of it.
- 3 Set the Sensitivity of Motion detection. Adjust it referring to the level indicator of Motion detection. To increase the sensitivity, move the Sensitivity slider bar to the right. To decrease, move it to the left. When you release the mouse, the new setting is applied to the level of motion detection indicator.
- 4 Set the Threshold level of Motion detection. Adjust the Threshold slider bar in the same way of step 3 to set the level the camera executes motion detection.
- 5 If necessary, set the Motion detection working areas, the sensitivities and the Threshold level of the other Windows 2, 3, 4 by following steps 1 to 4.
- 6 After all settings, click **OK**.

Notes

- While motion detection setting menu is displayed, motion detection of Mail (SMTP), FTP client, Image memory and Alarm output notification will not work. Make sure to close Motion detection setting menu after setting.
- Before using the Motion detection, perform the operation test to confirm correct operation.
- The Motion detection may not operate correctly in the following cases:
 - while changing a setting on the Camera setting menu
 - when the object is dark
 - when the camera is installed in an unstable place that causes vibration to the camera
 - when a small bit rate (64 kbps, 128kbps) is selected in **Bit rate** setting of MPEG4

Using DDNS Service — DDNS Setting Menu

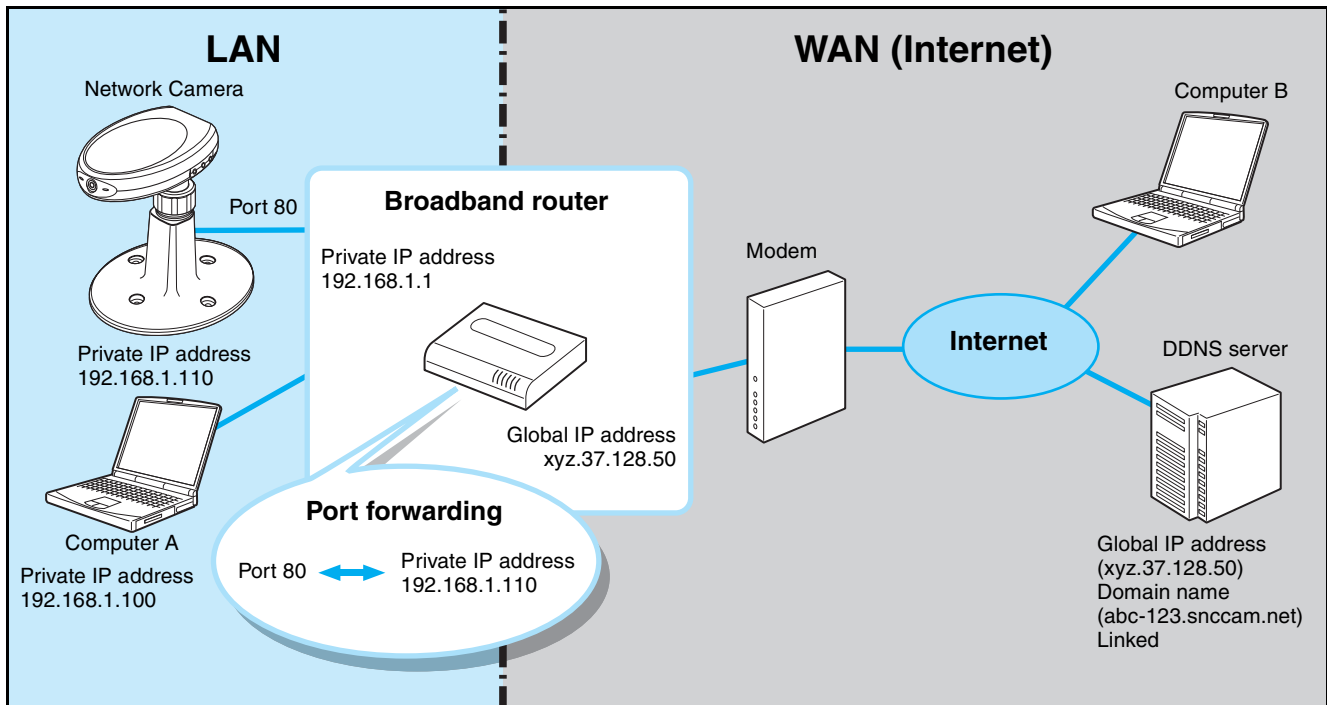
Click **DDNS** of Administrator Menu to display the DDNS setting menu. In this menu you can use the Network Camera DDNS Service and link the camera host name to the domain name. If you use this service, you can access the camera using an URL such as “http://(your host name).snccam.net”. For details of DDNS service, access the following URL.

URL: <http://www.register-snccam.net/>

Note

To use this function, the camera must be connected to the Internet.

To use this function, you need knowledge of broadband router and port forwarding. The following shows an example of the most basic system configuration for using the network camera in the Internet.



Set up the camera and broadband router (hereinafter called router) as follows in the DDNS setting menu page before registering for DDNS service.

- 1 Connect the camera to the router, and set up the network. Refer to “Assigning the IP Address to the Camera” (page 7) of “Preparation” or “Configuring the Network — Network setting Menu” (page 38).

Note

Be sure to perform DNS setting for the camera. Type the IP address assigned by the Internet Service Provider in the Primary/Secondary DNS server.

- 2 Open the setup window of the router, and set the port forwarding to the IP address set in the camera. (**For example:** For the settings in the diagram above, set as follows.)
Port 80 ↔ Private IP address 192.168.1.110

Notes

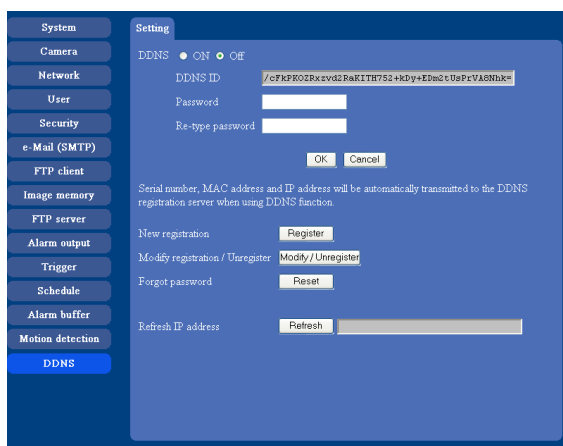
- Refer to the User’s Guide provided with the router for details of port forwarding setup. Port forwarding may not be supported on some routers, or may be called by a different name. If necessary, contact the router manufacturer for details.
- If using a port other than 80, set the same port number (in the range 1024 to 65535) in the camera’s setting menu and for port forwarding on the router.

3 On the router's setup menus, check the global IP address (for example, xyz.37.128.50 in the above diagram) on the WAN side currently assigned by the provider. Type the global IP address in the PC browser and check if you can access the camera.

Notes

- To specify a port number other than 80 for port forwarding, type a colon (:) after the global IP address and then type the port number. (For example: http://xyz.37.128.50:1024)
- On some routers, you cannot access the WAN side global IP address via a network on the LAN side of the router. In this case, check it using another Internet access.
- After the above setup, the camera can be accessed from any computer connected to the Internet. If you want to restrict access to the camera, perform the user setting and security setting procedures in the camera setting menus.
- If you cannot access the camera after performing the above setup, consider the following possibilities.
 - Ⓐ The IP address that the provider assigns may not be a global IP address.
 - Ⓑ The port number (for example, Port 80) set for port forwarding may be blocked by the Internet Service Provider.
 - Check with the provider.
 - Ⓒ The port number set for port forwarding may be blocked by security software or a firewall installed in the computer.
 - Check the settings of the security software or firewall.

4 Click **DDNS** of the Administrator setting menu to display the DDNS setting menu.



The followings are explanations for the setting menu item.

[DDNS]

Select whether to use the dynamic DNS function or not by on or off.

Even after you have registered for the dynamic DNS service, set it to off when you are not using it.

[DDNS ID]

This is the ID special for the equipment which is used for the dynamic DNS service. It is used when you proceed with New registration, Modify/Unregister, Forgot password and so on in the registration site.

When you access the registration site through the DDNS setting menu page, the DDNS ID will have already been input.

[Password]

[Re-type password]

Type the password set for dynamic DNS access. It must consist of 6 to 16 characters, including letters of the alphabet and numerals.

[New registration]

It is used when you proceed with New registration for the dynamic DNS service. For details, refer to the instructions below.

[Modify registration/Unregister]

This is used to jump to the Modify/Unregister page of the registration site. For details, refer to "Modify Registration/Unregister Process" given in the registration site (<http://www.register-snccam.net>).

[Forgot password]

This is used to jump to the Forgot password page of the registration site.

[Refresh IP address]

This is used when you proceed with manual updating of the IP address for the DDNS server. The camera routinely proceeds with updating of the IP address at about hourly intervals, so you do not need to use this button.

When you have pressed the reset button or proceeded with Factory default after registration for dynamic DNS, you can restart the dynamic DNS service by this button.

- 5 In the DDNS setting window of the camera, select **On** of **DDNS**, type **Password** and **Re-type password**, and then click **OK**.

The password for the DDNS service is saved in the camera, and it prepares for DDNS service registration.

Note

When using the DDNS function, the serial number of camera, MAC address and IP address will be sent to the server. You should agree it before you go to the next step.

- 6 Click the **Register** button to proceed with new registration for the DDNS service. The camera proceeds with “Product information registration” for the registration server to prepare for your registration for DDNS service.

When “Product information registration” is done properly, the new window of the browser is displayed and a “New registration” display of the registration site opens. Type the same DDNS ID and password as in the DDNS setting menu of the camera, then click **Next**.

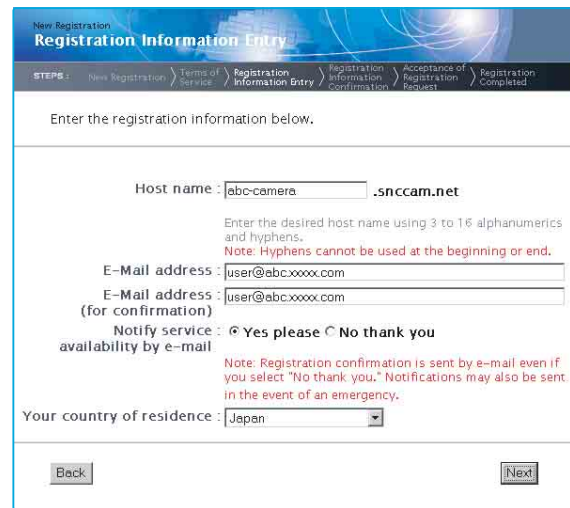


Note

A DDNS ID has been already input when the window is displayed. You do not have to input it.

- 7 Read the “Terms of Service”, and click **I agree** after agreement.

- 8 Type all items in the registration form, then click **Next**.



[Host name]

Type the host name you want to apply to. Usable characters are alphabets, numbers and hyphens (-). 3 to 16 characters can be used. The last character cannot be a hyphen.

[E-Mail address]

[E-Mail address (for confirmation)]

Type the e-mail address of the person registered. Take care to type it correctly because a confirmation e-mail will be sent to it for actual registration of the dynamic DNS service.

[Notify service availability by e-mail]

Set whether you wish to receive e-mails which give information on the management condition of the service (stopping of the service by interference, and so on) or not.

[Your country of residence]

Select your country or region.

- 9** Verify the entered registration information, then click **Request Registration**.
A message appears, advising that your registration request has been accepted and that a confirmation e-Mail has been set.

New Registration
Registration Information Confirmation

STEPS: New Registration / Terms of Service / Registration Information Entry / **Registration Information Confirmation** / Acceptance of Registration Request / Registration Completed

After verifying that your entries are correct, click "Request Registration".

Host name : abc-camera.snccam.net
E-Mail address : user@abc.xxxxx.com
Notify service availability by e-mail : Yes please
Your country of residence : Japan

Back Request Registration

- 10** The confirmation e-mail should arrive at the e-mail address you specified for your registration. Within one hour of clicking the **Request Registration** button, access the URL provided in the e-mail.
- 11** Registration is now complete.
It takes a few minutes until the host name is reflected to the system. You can then access and check.

This section explains how to use the application software and commands, including the supplied CD-ROM.

Using the Supplied Setup Program

Explains the functions except the Network tab in the Setup Program.

To install the Setup Program, to assign the IP address and to set the network, see “Assigning the IP address to the Camera” on page 7 in “Preparations”.

Notes

- The IP Setup Program may not operate correctly if you use a personal firewall or antivirus software in your computer. In that case, disable the software or assign an IP address to the camera using another method. For example, see “Assigning the IP Address to the Camera Using ARP Commands” on page 74.
- If you are using Windows XP Service Pack 2 or Windows Vista, disable the Windows Firewall function. Otherwise the IP Setup Program will not operate correctly. For the setting, see “Configuring Windows Firewall” in “When using Windows XP Service Pack 2” on page 10 or “Configuring Windows Firewall” in “When using Windows Vista” on page 12.

Starting the Setup Program

Select **Program** from Start menu of Windows, then select **Program, IP Setup Program** and **IP Setup Program** in sequence.

The IP Setup Program starts.

Network tab appears. The IP Setup Program detects cameras connected to the local network and lists them on the Network tab window.

When you are using Windows Vista, message “User Account Control – An unidentified program wants access to your computer” may appear. In this case, click **Allow**.

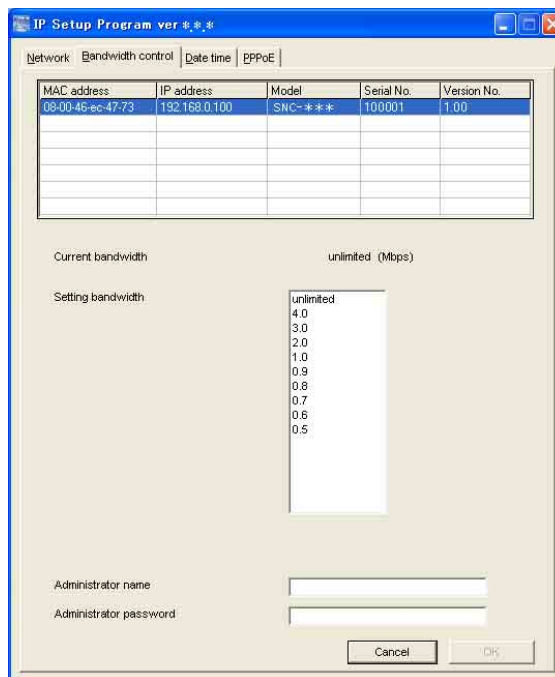
Bandwidth Control Tab

The communication bandwidth can be set when the Video mode of the camera is set to **JPEG**.

Note

When the Video mode of the camera is set to **MPEG4**, the bandwidth cannot be changed.

- 1 Click the Bandwidth control tab to display the bandwidth setting window. The current bandwidth is displayed in **Current bandwidth**.

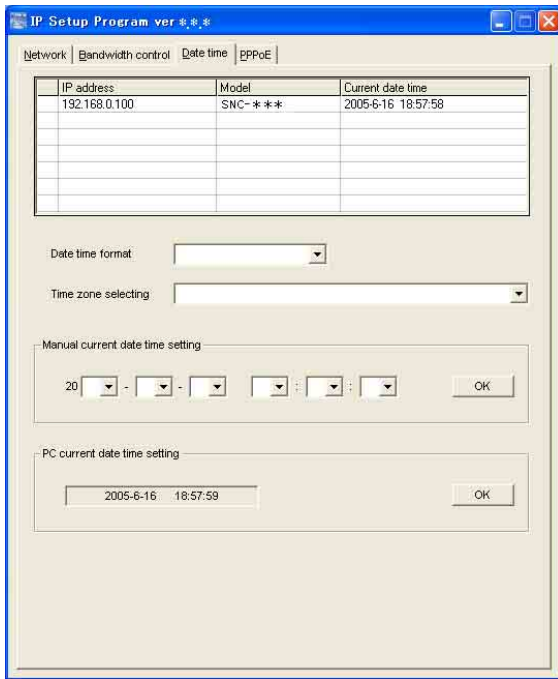


- 2 Click to select the camera to set the bandwidth from the list box.
- 3 Click to select the desired bandwidth from the **Setting bandwidth** list box.
- 4 Type the **Administrator name** and **Administrator password** in each box. The factory settings of both items are “admin.”
- 5 Click **OK**. If “Setting OK” is displayed, the bandwidth setting is completed.

Date time Tab

You can set the date and time on the camera.

- 1 Click the Date time tab to display the date/time setting window.



- 2 Click to select the camera you want to set the date and time for.

You can select multiple cameras and set the date and time simultaneously.

- 3 Select the date/time format from the **Date time format** drop-down list.
- 4 Select the area where the camera is installed from the **Time zone selecting** drop-down list.
- 5 Set the date and time.

You can set the date and time in two ways.

Manual current date time setting

Set the current date and time on the **Manual current date time** setting boxes, and click **OK**. The setting boxes are for the year (last two digits), month, date, hour, minutes and seconds from left to right.

PC current date time setting

The date and time set on the computer is displayed in the **PC current date time** setting box. Click **OK** on the right to set the camera's date and time to the displayed computer's date and time.

Note

Due to network properties, there may be a slight difference between the displayed computer's date and time and those set on the camera.

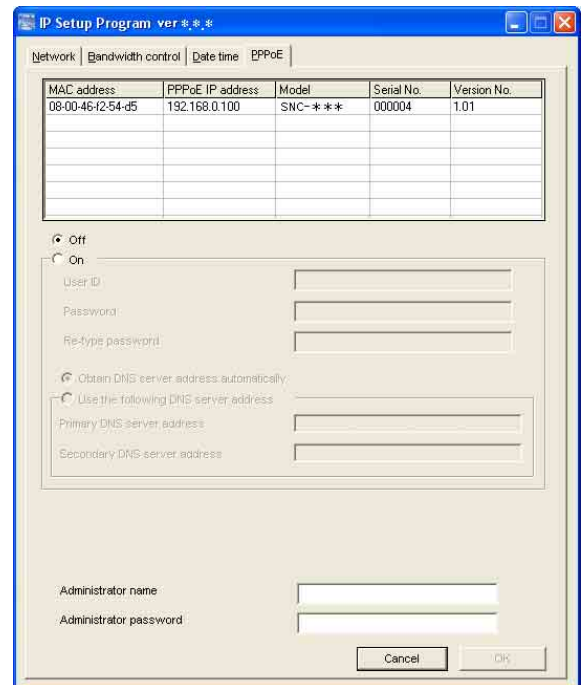
PPPoE Tab

PPPoE is used to connect to an ISP (Internet Service Provider) via the Internet. Using PPPoE, you can automatically obtain an IP address to connect to the Internet from the ISP.

The following PPPoE setting items are provided for the SNC-P1.

- User ID assigned by your ISP
- Password for the user ID
- DNS setting (automatic/manual setting)

- 1 Click the PPPoE tab to display the PPPoE setting window.



- 2 Click to select the camera you want to make the PPPoE settings for.

- 3 Select **On** below the list to enable the PPPoE setting. To disable the PPPoE setting, select **Off**.

- 4 Type the user ID assigned by the ISP in the **User ID** box.

- 5 Type the password for the user ID in the **Password** box.

6 Retype the password for the user ID in the **Re-type password** box.

7 Set the DNS server address.

To obtain the DNS server addresses automatically:

Select **Obtain DNS server address automatically**.

To specify the DNS server addresses manually:

Select **Use the following DNS server address**, and type the Primary DNS server address and Secondary DNS server address in each box.

8 Type the **Administrator name** and **Administrator password** in each box.

The factory settings of both items are “admin.”

9 Click **OK**.

If “Setting OK” is displayed, the PPPoE setting is completed.

Rebooting the Camera

Click **Reboot** on the Network tab to reboot the camera. It will take about two minutes to start again.

Using the SNC audio upload tool — Transmitting Audio to Camera

The supplied SNC audio upload tool allows you to transmit sound from the computer to the camera. This section explains the setup and operations of the SNC audio upload tool.

The SNC audio upload tool supports the following audio data to be transmitted.

Audio CODEC	Transmission rate
G.711 (μ-LAW)	64 kbps
G.726	40 kbps
G.726	32 kbps
G.726	24 kbps
G.726	16 kbps

Note

Only one user can transmit sound to the camera. Meanwhile, another user will not be able to transmit sound to the camera.

Installing the SNC audio upload tool

1 Insert the CD-ROM in your CD-ROM drive. A cover page appears automatically in your Web browser. If it does not appear automatically in the Web browser, double-click on the index.htm file on the CD-ROM.

When you are using Windows Vista, pop-up “AutoPlay” may appear. For details, “Installing software” in “When using Windows Vista” on page 11.

2 Click the **Setup** icon of **SNC audio upload tool**. The “File Download” dialog opens.

When you are using Windows XP Service Pack 2 or Windows Vista, a message regarding the active contents may appear. For details, see “Installing software” in “When using Windows XP Service Pack 2” on page 9 or “Installing software” in “When using Windows Vista” on page 11.

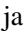
3 Click **Open**.

Note

If you click “Save this program to disk” on the “File Download” dialog, you cannot install the tool correctly. Delete the downloaded file, and click the **Setup** icon again.

- 4 Install the SNC audio upload tool following the wizard displayed.
If the Software License Agreement is displayed, read it carefully and accept the agreement to continue with the installation.

Connecting the Camera to the Computer

- 1 Connect a speaker to the  (line output) jack on the camera.
- 2 Connect a microphone to the microphone input jack on the computer.

Note

If the microphone input jack of the computer is not set correctly, no sound is transmitted from the computer and nothing is output from the speaker connected to the camera.
Set the microphone input jack from the control panel of Windows.

On Windows 2000

- 1 Select **Sounds and Multimedia** from Control Panel.
- 2 Click **Volume** in the **Sound Recording** section on the Audio tab.
The Recording Control window opens
- 3 Check **Select** in the **Microphone** section.

On Windows XP

- 1 Select **Sounds and Audio Device** from Control Panel.
- 2 Click **Volume** in the **Sound Recording** section on the Audio tab.
The Recording Control window opens.
- 3 Check **Select** in the **Microphone** section.

On Windows Vista

There are no settings regarding the microphone jack. If recording cannot be made, connect a microphone device to the computer and check that the recording device operates correctly, as follows.

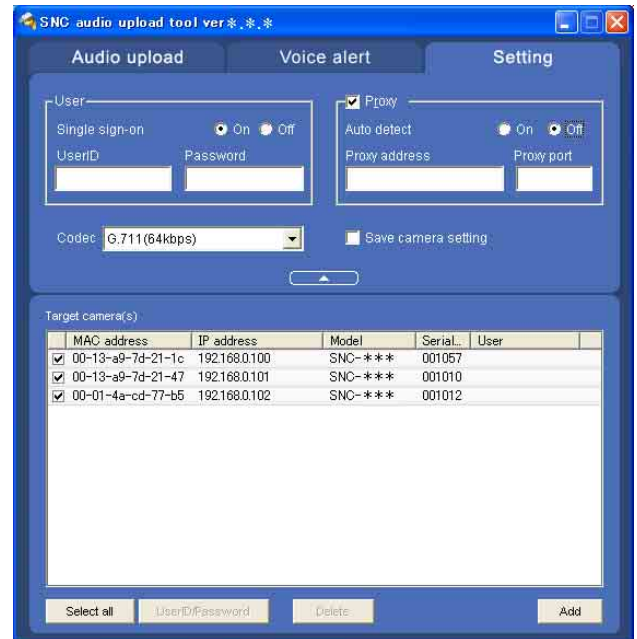
- 1 Select **Sound** from Control Panel.
- 2 Open the Recording tab and check that Windows has recognized the hardware correctly.

Using the SNC audio upload tool

When you start the SNC audio upload tool, the Setting tab is displayed.

Setting tab

Use this menu to set the camera to transmit audio from a computer or upload an audio file.



User

Set the **User ID** and **Password** for the administrator. The factory setting of the User ID for the Administrator is “admin,” and the Password is “admin.”

Single sign-on: Select **On** to use the same user ID and same password for all the cameras. Select **Off** to set the user ID and password individually for each camera.

For the setting with **Off**, see “User ID/Password” on page 67.

User ID: This item can be set when **Single sign-on** is set to **On**. The user ID specified here is applicable to all cameras.

Password: This item can be set when **Single sign-on** is set to **On**. The administrator password specified here is applicable to all cameras.

Proxy

Check this box when you use a proxy server for communications. When it is not checked, direct communications with the camera is performed.

Auto detect: Select **On** to obtain the proxy setting automatically from Internet Explorer.

Proxy address: Type the IP address or host name of the proxy server.

Proxy port: Type the port number used for communications with the proxy server.

Note

The Proxy setting is applicable to all cameras. You cannot use individual proxy settings for each camera.

Codec

Select the audio mode (Codec) from the drop-down list.

Save camera setting

Check this box to store the current settings and camera list in the Setting tab. The same settings will be recalled when the camera is rebooted.



Click this button to hide the camera list. Click it again to display the camera list.

Target camera(s) (Camera list)

When the SNC audio upload tool starts, it automatically detects Sony network cameras connected to the local network and displays them in the camera list. Up to 256 cameras can be displayed in the list.

Select the check box on the left of the row to enable audio transmission and audio file uploading for that camera. You can then enable these functions simultaneously for multiple cameras.

Notes

- If you are using Windows XP Service Pack 2 or Windows Vista, disable the Windows Firewall function. Otherwise the camera list may not be displayed automatically. For details, see “Configuring Windows Firewall” in “When using Windows XP Service Pack 2” on page 10 or “Configuring Windows Firewall” in “When using Windows Vista” on page 12.
- The SNC audio upload tool cannot detect the cameras that are connected to the local network after the program has started.
- The SNC audio upload tool cannot detect the network cameras that are not equipped with the audio feature.

Camera select checkbox: The check box is located on the left end of the row. Select this check box to enable audio transmission and audio file uploading for that camera.

MAC address: Displays the MAC address of the network camera.

IP address: Displays the IP address of the network camera. “DHCP” is shown at the end of the IP

address when the IP address is obtained with a DHCP server.

Model: Displays the model name of the network camera.

Serial: Displays the serial number of the network camera.

User: Displays the specified user ID and password. The password is shown with turned letters.

Select all

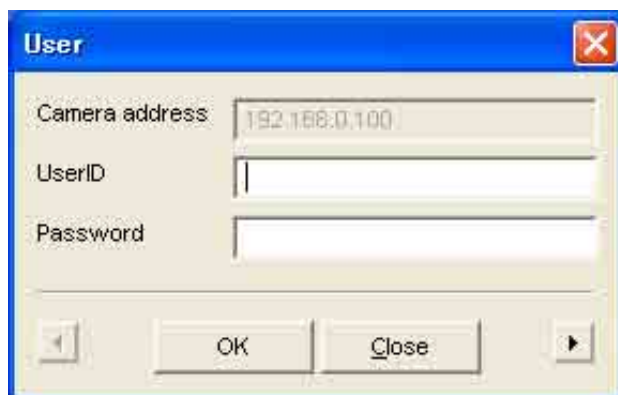
Click to select all the cameras in the camera list. This is usable when you delete all the cameras from the list or specify the same user ID and password for all the cameras,

User ID/Password

Use this item when you specify the user ID and password to communicate with the selected camera(s) only.

Select the camera(s) from the camera list and click this button, and the following dialog opens.

Type the user ID and password for the administrator and click **OK**.



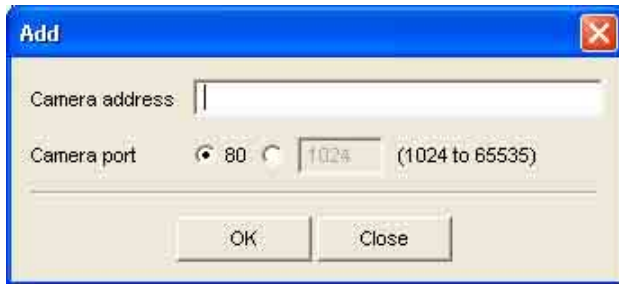
Note

If you select multiple cameras from the camera list, the same user ID and password are set for all the selected cameras. The factory settings of both items are “admin.”

Add

Use this item when you add a new network camera to the camera list manually. Click this button, and the following dialog opens.

Type the IP address and port number for the camera to be added and click **OK**.



Notes

- An error dialog appears if the specified IP address already exists in the camera list, is assigned for a device other than the network camera, or does not exist in the network.
- You cannot add new cameras if the maximum of 256 cameras has been displayed in the camera list.

Delete

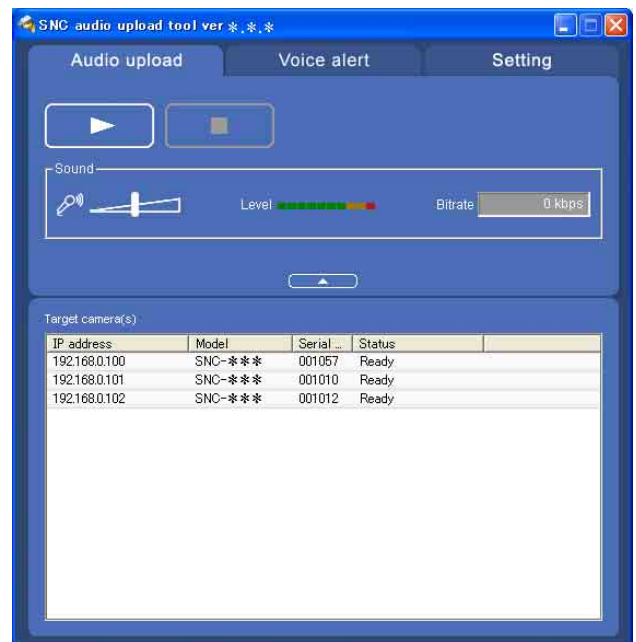
Click this button to delete the selected camera(s) from the camera list.

Note on switching the tab

If an error occurs when you switch from the Setting tab to the Audio upload tab or the Voice alert tab, the camera is shown in red. In this case, check the camera settings and the user ID and password settings.

Audio upload tab

Use this menu to transmit audio from the computer to the camera. You can transmit audio to multiple cameras displayed in the camera list simultaneously. Before transmitting, set **Speaker output** to **On** on the Common tab of the Camera menu.




▶ (start) / ■ (stop)


Click ▶ (start) to start audio transmission. The transmission speed is displayed in the Bitrate box during transmission. You can adjust the microphone volume and enable/disable the muting, if necessary. To stop the audio transmission, click ■ (stop).

Notes

- Audio transmission stops if you switch the tab during the transmission.
- Audio may be interrupted when the IP address is changed if **Obtain an IP address automatically (DHCP)** is set on **IP address** in the Network setting menu.
- Audio may be interrupted if you transmit it to many cameras simultaneously.

Sound adjustment and indicators

Adjust the microphone input volume by moving the  slider bar. You can adjust the volume even during transmission.

Click  to enable/disable sound muting. The microphone input volume is displayed at the Level. The transmission rate is displayed in the Bitrate box.



Click this button to hide the camera list. Click it again to display the camera list.

Target camera(s) (Camera list)

Displays the cameras selected with the camera select checkbox of the camera list in the Setting tab. The list shows the information and status of the selected cameras.

IP address: Displays the IP address of the network camera. “DHCP” is shown at the end of the IP address when the IP address is obtained with a DHCP server.

Model: Displays the model name of the network camera.

Serial: Displays the serial number of the network camera.

Status: Displays the current status of the camera.

Ready: The camera is ready for connection.

Connected: The camera connection is successful.

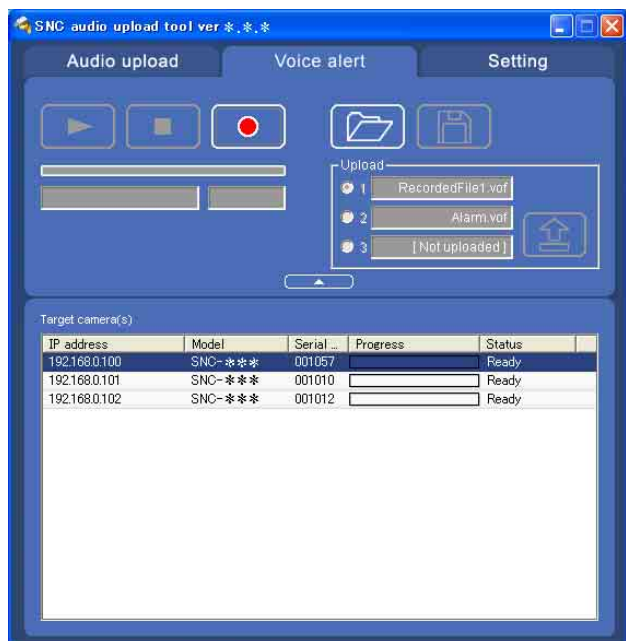
Fault: The camera connection is unsuccessful.

Sending: Audio data being transmitted

Down: Transmission is interrupted due to a network problem.

Voice alert tab

Use this menu to record the sound through the microphone connected to the computer and upload the recorded audio file to the camera. You can upload the audio file to multiple cameras selected from the camera list simultaneously.



(playback)

To start playback, open the recorded file or another audio file and click this icon.

You can check the recorded sound or the contents of the selected audio file. During playback, the progress bar shows playback progress.

(stop)

Click to stop recording or playback.

When you click it during recording, recording stops, and you can review the recorded sound or upload the recording to the camera.

When you click it during playback, playback stops and the progress bar display returns to the start position.

(recording)

Click to start recording of the sound input to the computer microphone. The maximum recording time is 30 seconds.

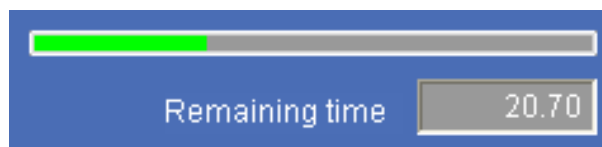
The codec specified in the Setting tab is used for the recording.

The recorded file is displayed as “RecordedFile.vof.”

Notes

- Recording or playback stops if you switch the tab during recording or playback.
- The recorded file is not stored in the computer.

Recording/playback progress bar



You can check recording or playback progress with this bar.

During recording, the right end of the bar represents 30 seconds and the remaining recording time is displayed below the bar.

During playback, the maximum time of the bar depends on the recorded time.

(file open)

Click to select a previously saved audio file. You can play the selected audio file or upload it to the camera.

(save)

Click to save the recorded audio file to the computer.


Voice alert number select



Specify the voice alert number to which you want to upload the audio file. For example, select 1 when uploading to voice alert 1.

The name of the uploaded audio file is displayed to the right of the number.

“Not uploaded” is displayed if no audio file is uploaded to the camera.

The audio file name will be “RecordedFile” + “Voice alert number” + “.vof” if you upload an audio file recorded using  and not stored in the computer.

Notes

- The voice alert number select is disabled if the camera specified in the Setting tab has old-version software.
- The audio file name for the camera selected in the camera list is displayed here. To check the uploaded file name, click on the camera in the camera list.
- The audio file is uploaded to the same voice alert number on all the cameras in the camera list. If the camera has old-version software, the audio file is automatically uploaded to voice alert number 1.



(upload)

Click to upload the recorded or selected audio file to the camera specified in the Setting tab. Only one audio file can be uploaded to the camera at a time.

Note

Uploading a new audio file overwrites the audio file previously uploaded to the camera.



Click this button to hide the camera list. Click it again to display the camera list.

Target camera(s) (Camera list)

Displays the cameras selected with the camera select checkbox of the camera list in the Setting tab. The list shows the information and status of the selected cameras.

IP address: Displays the IP address of the network camera. “DHCP” is shown at the end of the IP address when the IP address is obtained with a DHCP server.

Model: Displays the model name of the network camera.

Serial: Displays the serial number of the network camera.

Progress: Displays the progress of audio file transmission.

Status: Displays the current status of the camera.

Ready: The camera is ready for connection.

Inquiry: The camera information is being asked for.

No func: The camera does not support the Voice alert function.

Uploading: The audio file is being uploaded.




Fault: The audio file uploading is unsuccessful.

Succeeded: The audio file uploading is successful.




Uploading the recorded audio file to the camera

Tip



Before operating, create an audio file and set the camera for audio uploading. Set the camera using the Setting tab.

- 1 Click  (recording) in the Voice alert tab to start recording.
- 2 Click  (stop) to stop recording. Recording will stop automatically in 30 seconds.
- 3 Select the voice alert number.
- 4 Click  (upload) to transmit the audio file to the camera.

Saving the recorded audio file to the computer

- 1 Click  (recording) in the Voice alert tab to start recording.
- 2 Click  (stop) to stop recording. Recording will stop automatically in 30 seconds.
- 3 Click  (save). The **Save as** dialog appears. Type the file name and save it.

Uploading the saved audio file to the camera


- 1 Click  (file open) in the Voice alert tab and select the audio file to be uploaded.
- 2 Select the voice alert number.
- 3 Click  (upload) to transmit the audio file to the camera.

Using the SNC video player — Playing Video/Audio File Recorded on Camera

The supplied SNC video player allows you to play video/audio data recorded on the camera with your computer.

This section explains the setup and operations of the SNC video player.

Downloading the SNC video player

To download the SNC video player, click the  Player icon located on the upper part of the main viewer of the camera.

Type the user name and password for the administrator on the download dialog and click **OK**. (The factory settings of both items are “admin”.)

On the “File Download” dialog, click **Save**. The SNC video player is saved in the computer.

Note


To operate the SNC video player, a special DLL file is necessary. This file is automatically installed in the computer when you view camera images with the ActiveX viewer.

Using the SNC video player

- 1 Double-click the SNC video player downloaded from the camera to start this application.



- 2 Click the  icon.
The Select File dialog opens.

- 3 Select the file you want to play.
Information boxes on the selected file are displayed on the left side of the window as follows:
Each click on the  (information) icon switches between “display” and “Not to display” of the file information.

File information

Model name: Model name of the camera with which the file is recorded.

IP address: IP address of the camera with which the file is recorded.

Serial number: Serial number of the camera with which the file is recorded.


Record event: Type of event used for the recording: **Sensor input** or **Motion detection**.

Date&time: Recording date and time


Movie: Video Codec


Audio: Audio Codec


Playing a video/audio file

Click  (start) to start playing from the beginning of the selected file.

To freeze the movie temporarily, click  (pause).

Click  again to restart playing.

To stop playing, click  (stop).


To restart playing, click  (start) again.

Play stops when the file is played to the end.

To play from a specified point

Move the slider bar below the image display, and the file will play starts according to the position of the slider bar position.


Adjusting the sound

Adjust the playing sound volume by moving the  slider bar. Move it to the left end for the minimum volume, and to the right end for the maximum volume.

Click the speaker icon to enable/disable the sound muting.

When the sound muting is on, no sound is heard even if you move the slider bar to the right.

Saving an image

Click  (capture) icon during playing or pause and the captured image is displayed on a pop-up dialog. To save the image, click **Save** on the dialog. You can specify the destination to which the image is to be stored and select the JPEG or Bitmap format.

Using the Custom Homepage Installer

You can store the homepage that you have created in the camera and watch it.

Notes on creating the homepage

When you are creating the homepage, note the following points.

- The file name should be typed up to 24 characters including the extension.
- The file size of the homepage should be 2.0 MB or less.
- To see the created homepage, set the **Default URL** in the System setting menu.

Uploading the homepage to the camera using the Custom Homepage Installer

- 1 Insert the CD-ROM in your CD-ROM drive. A cover page appears automatically in your Web browser. If it does not appear automatically in the Web browser, double-click on the index.htm file on the CD-ROM.

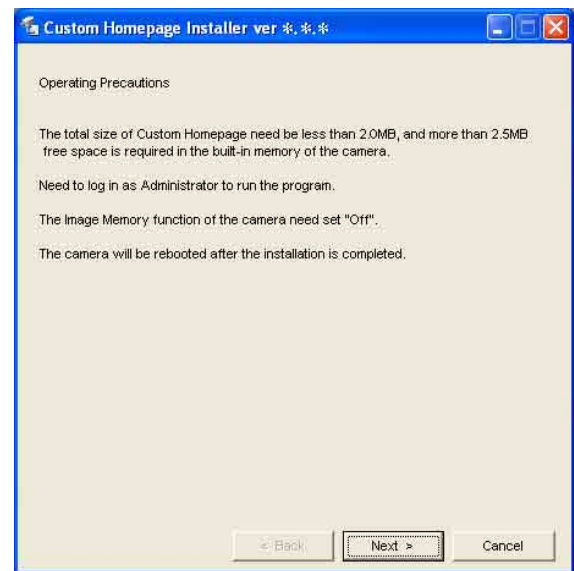
When you are using Windows Vista, pop-up “AutoPlay” may appear. For details, “Installing software” in “When using Windows Vista” on page 11.

- 2 Click the **Start** icon of **Custom Homepage Installer**. The “File Download” dialog opens.

When you are using Windows XP Service Pack 2 or Windows Vista, a message regarding the active contents may appear. For details, see “Installing software” in “When using Windows XP Service Pack 2” on page 9 or “Installing software” in “When using Windows Vista” on page 11.

- 3 Click **Open**. The installer starts and notes are displayed.

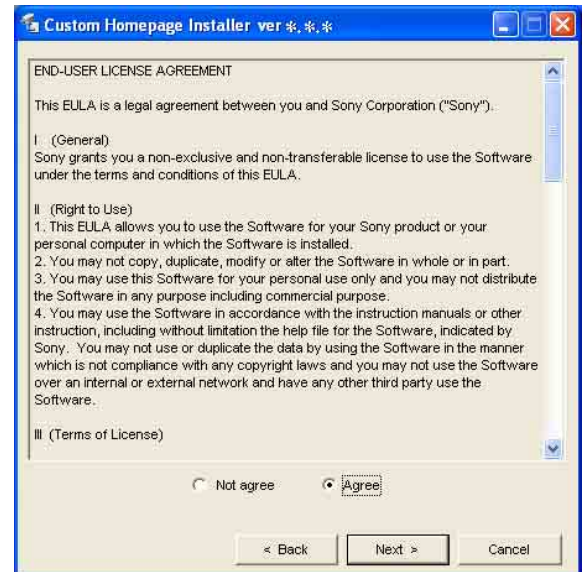
When you are using Windows Vista, message “User Account Control – An unidentified program wants access to your computer” may appear. In this case, click **Allow**.



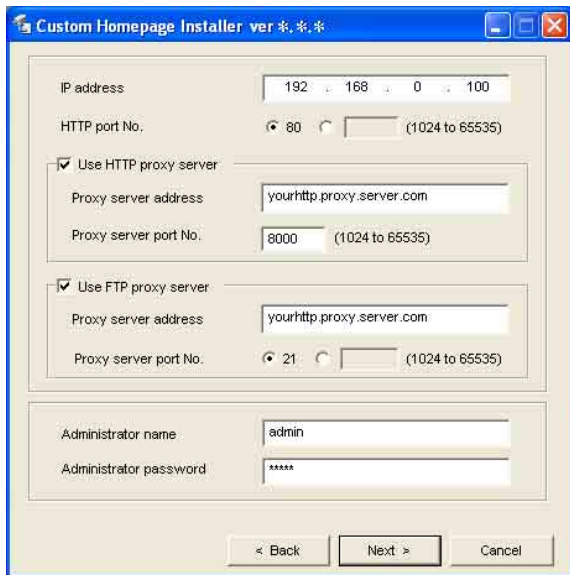
Note

If you click “Save this program to disk” on the “File Download” dialog, the CustomHomepageInstaller.exe file will be saved on the computer. Double-click the saved file to start it.

- 4 Read the notes carefully, and click **Next**. The Software License Agreement is displayed.



- 5 Read the agreement carefully, select **Agree** if you accept it, then click **Next**.



- 6 Type the IP address of the camera to be uploaded in the IP address box.
- 7 Specify the HTTP port No. of the camera. Initial HTTP port No. is set to 80.
- 8 When you use a proxy server, set the following:
For the proxy server of your environments, consult your network administrator.

When using an HTTP proxy server:
Select **Use HTTP proxy server**, and type your settings in the Proxy server address and Proxy server port No. boxes.

When using an FTP proxy server:
Select **Use FTP proxy server**, and type your settings in the Proxy server address and Proxy server port No. boxes.

Note

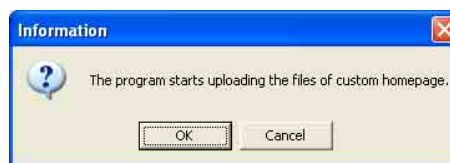
If you cannot establish communications with the camera using the proxy server being used, connect the camera to the local network and run the installer without using the proxy server.

- 9 Type the Administrator name and Administrator password of the camera to be uploaded. The factory settings of both items are “admin.”

- 10 Confirm that all items are correct, then click **Next**.



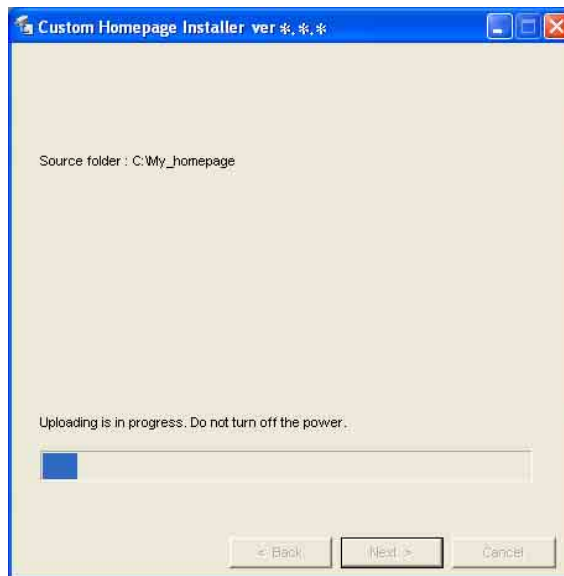
- 11 Type the path for the folder in which your homepage is stored in the Source folder box, then click **Next**.



- 12 Click **OK**.
Uploading of the homepage file starts.

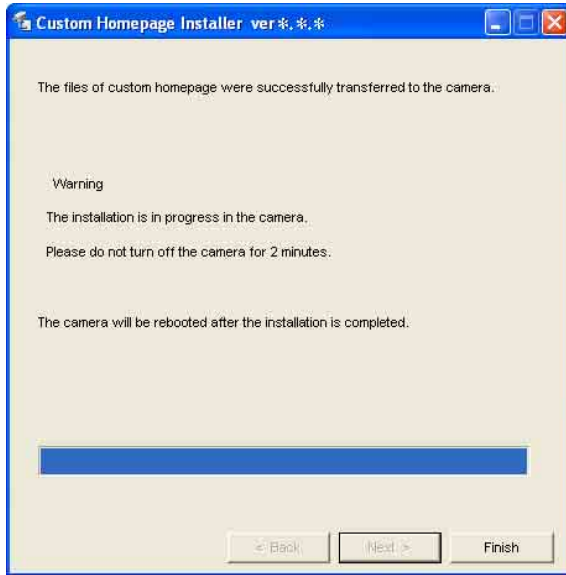
Note

Do not turn off the camera until the camera is rebooted after uploading the homepage file.



Others

The following page will appear after a while.



After displaying this page, the camera will be adjusted and rebooted automatically in two minutes.

13 Click **Finish** to exit the program.

Assigning the IP Address to the Camera Using ARP Commands

This section explains how to assign an IP address to the camera using ARP (Address Resolution Protocol) commands without using the supplied IP Setup Program.

Note

When you turn on the camera, execute the ARP and PING commands within 5 minutes. Also when you restart the camera, execute the operation within 5 minutes.

- 1 Open the command prompt on the computer.
- 2 Enter the IP address and the MAC address of the camera to assign a new IP address, using the following ARP commands.

```
arp -s <Camera's IP address> <Camera's MAC address>
ping -t <Camera's IP address>
```

Example:

```
arp -s 192.168.0.100 08-00-46-21-00-00
ping -t 192.168.0.100
```

- 3 When the following line is displayed on the command prompt, hold down **Ctrl** and press **C**. The display stops.

```
Reply from 192.168.0.100:bytes=32 time...
```

You will normally receive a reply after about 5 repetitions of "Request time out."

- 4 Wait until the execution of PING finishes, then input the following code.

```
arp -d 192.168.0.100
```

Note

If you do not receive a reply, check the following:

- Did you enter the ARP commands within 5 minutes after it was turned on?
If not, turn off the camera and restart the operation.
- Is the NETWORK indicator on the camera flashing?
If the indicator goes off, the network connection has a problem. Connect the network correctly.
- Did you enter the IP address previously used for another device?
Assign a new IP address to the camera.
- Do the computer and the camera have the same network address?
If not, set the same network address on the computer and the camera.

Using the SNMP

This unit supports SNMP (Simple Network Management Protocol). You can read MIB-2 objects and write some MIB-2 objects using software such as SNMP manager software. This unit also supports the coldStart trap which occurs when the power is turned on or the unit restarts, and the Authentication failure trap which informs of an illegal access using SNMP. Using CGI commands, you can set community name and access limitation, reading/writing right, host to send traps, and some MIB-2 objects. To allow these settings, you need authentication by the camera administrator.

1. Inquiry Commands

You can check the SNMP Agent settings using the following CGI commands.

```
<Method>
  GET, POST
<Command>
  "http://ip_adr/snmpdconf/inquiry.cgi?inqjs=snmp
  (JavaScript parameter format)
  http://ip_adr/snmpdconf/inquiry.cgi?inq=snmp
  (standard format)
```

With the above inquiry, you can obtain the following setting information. The following explains the setting information using the inqjs=snmp (JavaScript parameter) format.

```
var sysDescr="SONY Network Camera SNC-P1" ...①
var sysObjectID="1.3.6.1.4.1.122.8501" ...②
var sysLocation="" ...③
var sysContact="" ...④
var sysName="" ...⑤
var snmpEnableAuthenTraps="1" ...⑥
var community="public,0.0.0.0,read,1" ...⑦
var community="private,192.168.0.101,write,2" ...⑧
var trap="public,192.168.0.101.1" ...⑨
```

- ① describes the case of "mib-2.system.sysDescr.0". You cannot change this parameter.
- ② describes the case of "mib-2.system.sysObjectID.0". You cannot change this parameter.
- ③ describes the case of "mib-2.system.sysLocation.0". This field is used to describe information on the location of this camera. Nothing is set at the factory.

- ④ describes the case of "mib-2.system.sysContact.0". This field is used to describe the information on administrator of this camera. Nothing is set at the factory.
- ⑤ describes the case of "mib-2.system.sysName.0". This field is used to describe administration node of this camera. Nothing is set at the factory.
- ⑥ describes the case of "mib-2.snmpEnableAuthenTraps.0". This example shows when "1" (enable) is set. With this setting, a trap occurs when there is an Authentication failure. When "2" (disable) is set, no Authentication failure trap occurs.
- ⑦ describes the community name and the reading/writing attributes. This example shows the identification number "ID=1", the community name public, and enables read from any IP address (0.0.0.0).
- ⑧ describes the community name and the reading/writing attributes, similarly to ⑦. This example shows the identification number ID=2, the community name "private", and enables "read/write" by the SNMP request packet from the host "192.168.0.101".
- ⑨ describes the host name to send a trap. This example shows the identification number "ID=1", the community name "public", and enables sending of traps to the host having the IP address "192.168.0.101".

2. Setting Commands

The unit supports the following setting commands of SNMP.

```
<Method>
  GET, POST
<Command>
  http://ip_adr/snmpdconf/snmpdconf.cgi?
  <parameter>=<value>&<parameter>=...&...
```

First, perform the settings of the following parameters.

- 1) sysLocation=<string>
Set the case of "mib-2.system.sysLocation.0" in the <string> position. The maximum length of <string> is 255 characters.
- 2) sysContact=<string>
Set the case of "mib-2.system.sysContact.0" in the <string> position. The maximum length of <string> is 255 characters.

3) sysName=<string>
Set the case of “mib-2.system.sysName.0” in the <string> position. The maximum length of <string> is 255 characters.

<Command>
http://ip_adr/snmpdconf/snmpdconf.cgi?
snmpd=restart

4) enaAuthTraps=<value>
Set the case value of “mib-2.snmp.snmp EnableAuthenTraps.0” in the <string> position. Type “1” (enable) or “2” (disable) in the <value> position.

5) community=<ID>,<rwAttr>,<communityName>,<IpAddressString>
Set the community name and the reading/writing attributes. <ID> describes the setting identification number (1 to 8), <rwAttr> describes a character representing the reading/writing attribute (“r”, “R”, “w or “W”), <communityName> describes the community name to be set, and <IpAddressString> describes the IP address of the host you allow access (0.0.0.0 for any host).

Example: To allow reading/writing by any host in the “private” community and having the ID number “2”.
community=2,w,private,0.0.0.0

6) trap=<ID>,<communityName>,<IpAddressString>
Set the host you want to send traps to. <ID> describes the setting identification number (1 to 8), <communityName> describes the community name to send traps to, and <IpAddressString> describes the IP address of the host to send traps to.

Example: To specify the destination of traps as the private community and the ID number “1”.
rap=1,public,192.168.0.101

7) delcommunity=<ID>
This parameter is used to delete the previous community setting. <ID> describes the community setting identification number (1 to 8).

8) deltrap=<ID>
This parameter is used to delete the previous setting of the host to send traps to. <ID> describes the trap setting identification number (1 to 8).

When you have finished changing the SNMP setting information using the above parameters 1) to 8), check the changed settings using an inquiry commands. If the changed settings are OK, restart the SNMP using the following CGI command.

SNMP restart command

<Method>
GET, POST

Glossary

ActiveX control

A component program object that can be used with web pages or other application programs. The technology for creating ActiveX control is part of software developed by Microsoft.

ARP commands

The commands for checking the entry of the IP address and MAC address in a host computer, or for updating them.

Bandwidth control

To limit the amount of transmitted data.

Bit rate

The rate at which data bits are transmitted.

Capture

To display the audio and video digital data from the video equipment on a computer.

Codec

Software/hardware for coding/decoding video and audio data.

Contrast

The difference in tone between the lightest and darkest portions of the image.

Default gateway

Device that can be used to access the other network.

DHCP server

Abbreviation for Dynamic Host Configuration Protocol server. The IP address of a terminal without an individual IP address can be automatically distributed by the Dynamic Host Configuration Protocol (DHCP). The DHCP server assigns the IP addresses to the terminals.

Digital zoom

Zooming in/out function of an image without using an optical zooming function.

DNS server

Abbreviation for Domain Name System server. As an IP address required for connecting to the device on an IP network is numerical and difficult to remember, the Domain Name System was established. A domain name is alphabetic and is easier to remember. When a client computer uses a domain name to connect to another computer, it asks a DNS server to translate the name into the corresponding IP address. Then the client computer can obtain the IP address of the computer to be connected.

Frame rate

The number of frames of a moving image that can be transmitted per a second.

FTP client

Software to be used for accessing the FTP server.

FTP server

A server to be used to transfer files via a network.

HTTP port

A port used to communicate between the web server and the web client such as a web browser.

IP address

Abbreviation for Internet Protocol Address. An individual IP address is basically assigned to each piece of equipment connected to the Internet.

I-picture interval

The interval between I-pictures in Moving Picture Experts Group (MPEG). I-picture means the decoding picture without using the other picture's information.

Java applet

A program written in Java language that can be used in the Web browser.

Java Virtual Machine

Software that transfers the Java applet's byte code to the native code of your system to execute it.

JPEG

Abbreviation for Joint Photographic Expert Group. The still image compression technology or standards of the ISO (International Organization for Standardization) and ITU-T. Popularly used as image compression format on the Internet, etc.

MAC address

A network address that uniquely identifies each LAN card.

MPEG4

Abbreviation for Moving Picture Experts Group4. One of the MPEG standards for image compression format aiming to transmit images at a high compression rate with lower picture quality.

Multicast

The class D IP address assigned between 224.0.0.0 and 239.255.255.255. Using this IP address enables you to transmit the same data to multiple equipment.

Network address

The portion that identifies the local network (subnet) in an IP address.

Network bandwidth

Bit rate that can be used for networking.

NTP server

Network time server that transmits and receives time information over the networks.

Passive mode

The mode whereby a client FTP allows TCP connection for data transmission to the FTP server.

POP server

A server for storing incoming e-mail until you have read it.

PPPoE

A protocol to enable use of the point-to-point protocol (PPP) via the Ethernet.

Primary DNS server

One of the DNS servers that can first reply to a request by connected devices or other DNS servers.

Proxy server

A server or software that acts as an intermediary between a local network and the Internet so that it can connect to the Internet in place of a computer on a local network

Saturation

The degree to which the color is pure.

Secondary DNS Server

Subsidiary DNS server used when a primary DNS server cannot be used.

SMTP server

A server for sending or relaying e-mail messages between servers.

SNMP

A protocol for monitoring and managing network devices.

Subnet mask

32-bit stream used to distinguish the subnet address from the IP address.

TCP

Abbreviation for Transmission Control Protocol. A standard protocol used for the Internet connection. Compared with the other protocol, UDP, TCP provides reliable communication but the communication speed is slower.

UDP

Abbreviation for User Datagram Protocol. A standard protocol used for the Internet connection. Compared with the other protocol, TCP, UDP can transmit data faster, but reliable communication is not guaranteed.

Unicast

Transmission of the data to the specified equipment on a network by specifying a single address.

Index

- A**
- Access log 33
 - access right 42
 - ActiveX control 9, 12
 - ActiveX viewer 18
 - activity detection function 57
 - Administrator 16, 41
 - administrator 16, 41
 - Administrator e-mail address 27
 - administrator menu page 29
 - Advanced mode 28
 - Advanced mode Menu 28
 - Alarm 47
 - alarm 47, 53
 - Alarm buffer 30, 47, 56
 - alarm buffer 30, 47, 56
 - Alarm buffer setting Menu 56
 - Alarm output 23, 30, 53
 - alarm output 23, 30, 53
 - Alarm output setting Menu 53
 - Alarm recording 50
 - Alarm sending 44, 47
 - ARP commands 74
 - Authentication 27
 - authentication 27
- B**
- Backup setting data 32
 - Bandwidth 63
 - Blue LED 26, 31
 - blue LED 26, 31
 - Brightness 26
 - brightness 26
- C**
- Camera 29
 - camera setting 34
 - Camera setting Menu 34
 - Cancel button 29
 - Capture 19, 21
 - capture 19, 21
 - CGI commands 75
 - communication bandwidth 63
 - contrast 36
 - Cropping 34
- cropping 34
- Custom Homepage Installer 31
- D**
- Date & time 31
 - Date & time setting 26
 - date and time 26, 31, 64
 - Date_No. 51
 - DDNS 59
 - default gateway 38
 - Default policy 42
 - DHCP 38
 - Digital zoom 19, 21
 - digital zoom 19, 21
 - DNS server 38
 - Domain suffix 38
 - Dynamic IP address notification 39
- E**
- Easy mode 25
 - e-Mail 30
 - e-Mail (SMTP) 26, 27, 30
 - e-Mail (SMTP) setting Menu 43
 - e-Mail address 40
- F**
- Factory default 32
 - factory settings 32
 - flash memory 31
 - Flickerless 36
 - folder structure 51
 - format of date and time 32
 - Frame rate 19, 20
 - frame rate 19, 20
 - free space 49
 - FTP client 30, 54
 - FTP client setting Menu 46
 - FTP server 30, 46
 - FTP server setting Menu 52
- H**
- Home 19
 - Homepage Custom Tool 72
 - Host name 38
 - HTTP 40
 - HTTP commands 40
- I**
- Image memory 23, 30
- image memory 23, 30
- Image memory setting Menu 49
- Image quality 26
- image quality 26
- Image size 26, 34
- image size 19, 34
- information bar 10
- Information Bar message 10
- Internet Explorer 13
- IP Address 7
- IP address 7, 17, 38
- IP address notification 39
- IP Setup Program 7
- J**
- Java 18
 - Java applet viewer 18
 - JPEG 34, 37
- L**
- loading the setting data 32
 - logging in 17
- M**
- MAC address 38
 - main viewer 13, 19
 - main viewer page 19
 - memory 49
 - menu section 19
 - Message 27
 - Microphone 26
 - Mode 27
 - monitor Image 20
 - monitor image section 20
 - Motion detection 30, 57
 - motion detection 30, 57
 - Motion detection setting Menu 57
 - Mount 26
 - MPEG4 34, 36
- N**
- Network 29, 38
 - network 29, 38
 - network configuration 38
 - Network setting Menu 38
- O**
- OK button 29
 - overwrite 49

P			
Password	27, 41	Software version	31
password	27, 41	software version	31
Periodical recording	51	special tags	40
periodical recording	51	Subject.....	27
Periodical sending	45, 48	subject	27
periodical sending	45, 48	subnet mask.....	38
Picture	35	System.....	29, 31
Player	19	system configuring.....	31
POP server name.....	27	System log.....	33
port number.....	38, 40	T	
PPPoE	64	TCP	24
Proxy port number	40	TCP/UDP	20, 24
proxy server	40	time difference	32
Proxy server name.....	40	Time zone.....	32
R		time zone	32
Reboot.....	32, 65	title	40
reboot	32, 34, 65	title bar	31
Recipient e-mail address	27	Title bar name	31
recording images.....	49	Trigger.....	22, 30, 54
reset	37	trigger.....	19, 22, 30, 54
S		Trigger setting Menu.....	54
saturation.....	36	U	
saves the setting data.....	32	UDP (Multicast).....	24
Schedule.....	30, 55	UDP (Unicast).....	24
schedule	30, 55	URL.....	31
Schedule setting Menu.....	55	User	16, 30, 41
Security	30	user.....	16, 30, 41
security	30	User name	27, 41
security setting	42	user name	27, 41
Security setting Menu	42	user setting	41
Security Warning	9, 10, 12	User setting Menu	41
sending images.....	46	V	
Serial number	31	View size	19, 21
serial number.....	31	view size.....	19, 21
Setting	19, 25	viewer.....	18
Setup Program.....	63	Viewer mode	41
sharpness	36	viewer mode	41
SMTP server	40	voice alert number select.....	69
SMTP server name.....	27	volume.....	20
SNC audio upload tool.....	65	W	
SNC video player	71	welcome page.....	13, 17, 31
SNMP.....	75		

<http://www.sony.net/>

Sony Corporation

Free Manuals Download Website

<http://myh66.com>

<http://usermanuals.us>

<http://www.somanuals.com>

<http://www.4manuals.cc>

<http://www.manual-lib.com>

<http://www.404manual.com>

<http://www.luxmanual.com>

<http://aubethermostatmanual.com>

Golf course search by state

<http://golfingnear.com>

Email search by domain

<http://emailbydomain.com>

Auto manuals search

<http://auto.somanuals.com>

TV manuals search

<http://tv.somanuals.com>