



SY-K7VTA PRO V1.0 Motherboard

Quick Start Guide

Introduction

**Hardware
Installation**

**Quick BIOS
Setup**

The SOYO CD

SY-K7VTA PRO V1.0 Motherboard

Socket 462 for AMD® Athlon/Duron™ processors
VIA KT133AAGP/PCI Motherboard
266 MHz Front Side Bus supported
ATX Form Factor

Copyright © 2002 by Soyo Computer Inc.

Trademarks:

SOYO is the registered trademark of SOYO Computer Inc. All trademarks are the properties of their owners.

Product Rights:

All names of the product and corporate mentioned in this publication are used for identification purposes only. The registered trademarks and copyrights belong to their respective companies.

Copyright Notice:

All rights reserved. This manual has been copyrighted by SOYO Computer Inc. No part of this manual may be reproduced, transmitted, transcribed, translated into any other language, or stored in a retrieval system, in any form or by any means, such as by electronic, mechanical, magnetic, optical, chemical, manual or otherwise, without permission in writing from SOYO Computer Inc.

Disclaimer:

SOYO Computer Inc. makes no representations or warranties regarding the contents of this manual. We reserve the right to amend the manual or revise the specifications of the product described in it from time to time without obligation to notify any person of such revision or amend. The information contained in this manual is provided to our customers for general use. Customers should be aware that the personal computer field is subject to many patents. All of our customers should ensure that their use of our products does not infringe upon any patents. It is the policy of SOYO Computer Inc. to respect the valid patent rights of third parties and not to infringe upon or to cause others to infringe upon such rights.

Disclaimer:

Please be advised that some SOYO motherboards are designed with overclocking features and may allow users to run the components beyond manufacturer's recommended specifications. Overclocking beyond manufacturer's specifications is not recommended nor endorsed by SOYO, Inc. and will void your manufacturer's warranty. Overclocking beyond manufacturer's specifications is not encouraged and should be assumed at the user's own risk. Unsafe overclocking can damage the user's system or cause serious personal injury. If the user is unsure or in doubt about overclocking, please seek professional advise. SOYO, Inc. is not responsible for any direct or indirect damage resulting from overclocking.

Restricted Rights Legend:

Use, duplication, or disclosure by the Government is subject to restrictions set forth in subparagraph (c)(1)(ii) of the Rights in Technical Data and Computer Software clause at 252.277-7013.

About This Guide:

This Quick Start Guide can help system manufacturers and end users in setting up and installing the Motherboard. Information in this guide has been carefully checked for reliability; however, to the correctness of the contents there is no guarantee given. The information in this document is subject to amend without notice.

For further information, please visit our **Web Site** on the Internet. The address is "<http://www.soyo.com.tw>".

K7VTA PRO V1.0 Serial - Version 1.0 - Edition: September 2002

* These specifications are subject to amend without notice

1 Introduction

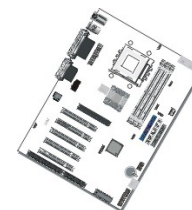
Congratulations on your purchase of the **SY-K7VTA PRO V1.0** Motherboard. This *Quick Start Guide* illustrates the steps for installing and setting up your new Motherboard.

This guide provides users with the basic steps of Motherboard setting and operation. For further information, please refer to the *SY-K7VTA PRO V1.0 User's Guide* that came with your Motherboard.

Unpacking

When unpacking the Motherboard, check for the following items:

◆ The SY-K7VTA PRO V1.0 KT133AAGP/PCI/ISA Motherboard



◆ The Quick Start Guide



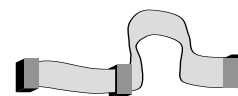
◆ The Installation CD-ROM



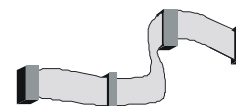
◆ SOYO Bonus Pack CD-ROM



◆ One IDE Device ATA 66 Flat Cable



◆ One Floppy Disk Drive Flat Cable



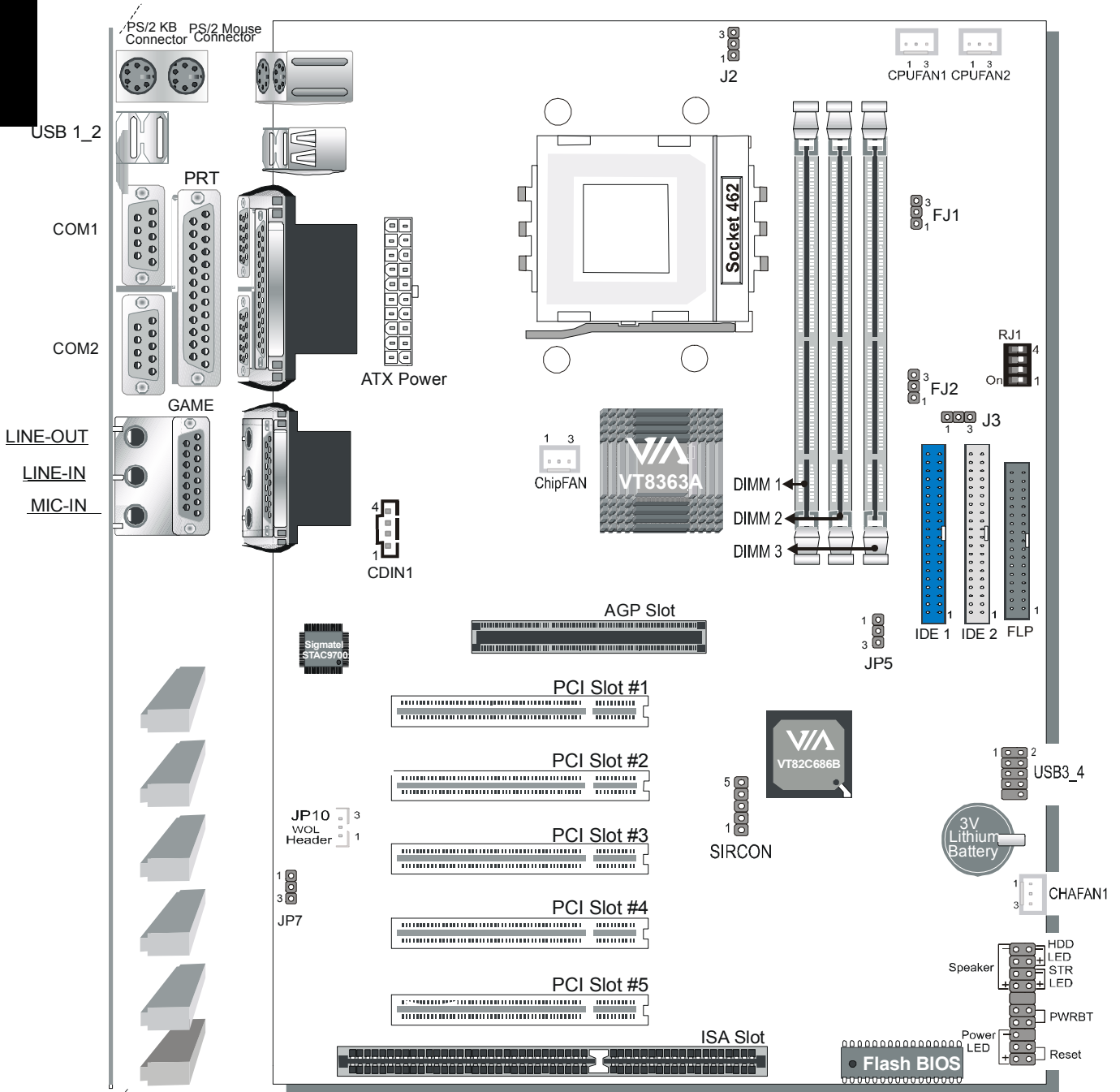
◆ One Heat Sink Compound



SY-K7VTA PRO V1.0 Quick Start Guide

Introduction

SY-K7VTA PRO V1.0 Motherboard Layout



Key Features

- Supports Socket A (Socket 462) AMD® processors
 - Supports 200/266 MHz Front Side Bus Athlon/XP CPU (750MHz~2600+)
 - Supports Duron Morgan CPU (650MHz~1.2GHz)
- PC99, ACPI
- Ultra DMA33/66/100 (ATA 33/66/100) EIDE
- Supports Wake-On-LAN (WOL)
- Power-on by RTC alarm
- Supports PC133/PC100 SDRAM and Virtual Channel Memory (VCM) SDRAM up to 1.5GB memory space
- Supports multiple-boot function
- 5 x 32-bit bus mastering PCI slots
- 1 x 32-bit AGP 1X/2X/4X slot
- 4 x USB ports onboard
- 1 x IrDA port
- ATX power connector
- 1 x 16-bit ISA slot
- 3 x 64-bit DIMM slots
- Supports Power Failure Resume
- Easy CPU settings in BIOS with the "SOYO COMBO setup"
- Supports Suspend to RAM
- Supports on-board AC97 Audio
- Supports CPU voltage adjustment
- Supports "SOYO F.O.C." (Fan Of Control) function

2 Installation



To avoid damage to your Motherboard, please follow these simple rules while handling this equipment:

- Before handling the Motherboard, ground yourself by touching an unpainted portion of the system's metal chassis.
- Remove the Motherboard from its anti-static packaging. Hold the motherboard by the edges and avoid touching its components.
- Check the Motherboard for damage. If any chip appears to be loose, press carefully to seat it firmly in its socket.

Follow the directions in this section which is designed to guide you through a quick and correct method to install your new **SY-K7VTA PRO V1.0** Motherboard. For detailed information, please refer to the *SY-K7VTA PRO V1.0 Motherboard User's guide and Technical Reference* online manual in the CD-ROM package that came with your Motherboard.

Gather and prepare all necessary components to complete the installation successfully:

- ◆ AMD® Socket462 processor with built-in CPU cooling fan (boxed type)
- ◆ SDRAM module(s)
- ◆ Computer case with adequate power supply unit
- ◆ Monitor
- ◆ PS/2 Keyboard
- ◆ Pointing Device (PS/2 Mouse)
- ◆ Speaker(s) (optional)
- ◆ Disk Drives: HDD, CD-ROM, Floppy drive. . .
- ◆ External Peripherals: Printer, Plotter, and Modem (optional)
- ◆ Internal Peripherals: Modem and LAN cards (optional)

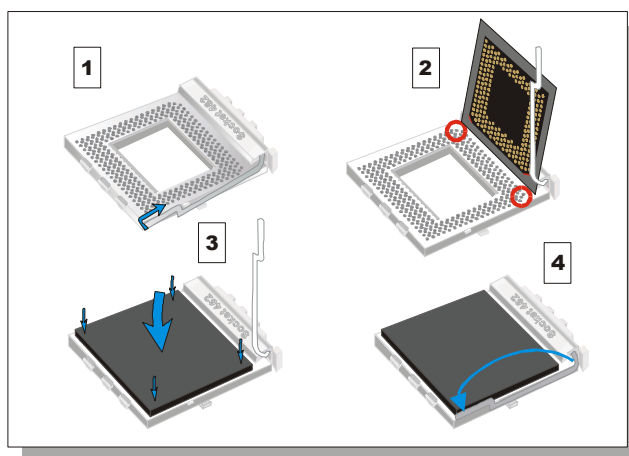
Note: 1. If you want to use an external speaker connected to "Line-out" port, please make sure to use an "amplified speaker" that can generate proper output sound volume.

Install the Motherboard

To perform the installation of your new **SY-K7VTA PRO V1.0** Motherboard, follow the steps below:

Step 1. CPU Installation

CPU Mount Procedure: To mount the AMD® & Athlon/Duron™ processor that you have purchased separately, follow these instructions.



1. Lift the socket handle up to a vertical position.
2. Align the blunt edge of the CPU with the matching pinhole edge on the socket.
3. Seat the processor in the socket completely and without forcing.
4. Then close the socket handle to secure the CPU in place.



Remember to connect the CPU Cooling Fan to the appropriate power connector on the Motherboard. *The fan is a key component that stabilizes the system. It prevents the equipment from overheating and prolongs the life of your CPU.*



FOC (Fan-Off Control)

The newly designed SOYO "FOC" is based on the concept of total protection for CPU, which is very different from currently seen on the market. The HW control function is used to see a passive security system of monitoring and warning. "FOC", designed by SOYO, gives emphasis on the concept of total protection. SW Simultaneous Signal Follow-ups techniques and Auto Power Off System are included to prevent all possible damage caused by the MAL-functioning of the CPU fan. With the help of "O/S On Time Monitoring And Warning" function, provided by the HW monitoring system, the double-protection purpose is achieved.

"FOC" includes the following functions:

- (1) Simultaneous Signal Follow Ups: Before the system enters the O/S, HW will detect the signals of the CPU fan pins, get their revolution information and send it to the BIOS.
- (2) Auto Power Off System: If the BIOS gets the information of CPU fan revolution, it goes on working normally. If not, it will inform the system and have the power supply disconnected immediately. Thus, the CPU is protected from over heating.

Note: The following must be observed to secure the normal functioning of "Fan-Off Control":

1. CPU fan with sensor pins must be used.
2. CPU fans approved by AMD are strongly recommended.
3. The "HOT KEY" function is provided for the CPU fans without sensor pins, to avoid the power off. Users may press the "Insert" key to jump over the "Power Off" mode; go to the BIOS and disable "FOC". Now system can be booted normally.
4. The power connector of the CPU fan must be connected to the specified "CPU Fan Connector" on the motherboard to secure the normal functioning of the system.

We provide the following User-Friendly protection features:

1. Fan-Off Control: The motherboard detects the status of the CPU fan and protects the CPU by automatically disconnecting the power supply. The default value of this function is Enable. After booting up, the user may disable it.
2. CPU Socket Sticker: Users will find a sticker on the CPU socket, which reminds them of the correct usage of the K7 CPU.
3. Heat Dissipation Paste: Heat Dissipation Paste is included for all Socket-A motherboards, to enhance the heat dissipation capability.


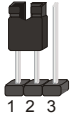


Furthermore, we strongly recommend our users to enable the function of HW monitoring in the BIOS. This function, together with the FOC, provide the total protection to the CPU and allow it to maximize its performance.

Step 2. Set CPU jumper

CPU Ratio Adjustment Setting (RJ1)

For certain AMD™ CPUs, the multiplier is not locked such that setting a ratio/multiplier higher than specified on the CPU is possible. For technical details read the following:

Refer to the following table to set the Frequency Multiplier of your CPU.

Frequency Multiplier Setting	J2	J3
Auto	Short Pin1-2 	Short Pin1-2 
Manual	Short Pin2-3 	Short Pin2-3 

If you set ratio to manual and configure the RJ1 jumper to the settings that match your CPU speed, as follow table:

RJ1	1	2	3	4	RJ1	1	2	3	4
5	on	off	on	on	9	off	off	on	on
5.5	on	off	on	off	9.5	off	off	on	off
6	on	off	off	on	10	off	off	off	on
6.5	on	off	off	off	10.5	off	off	off	off
7	off	on	on	on	11	on	on	on	on
7.5	off	on	on	off	11.5	on	on	on	off
8	off	on	off	on	12	on	on	off	on
8.5	off	on	off	off	12.5	on	on	off	off



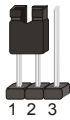
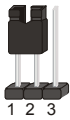
Note: SOYO does not guarantee system stability if the user over clocks the system. Any malfunctions due to over-clocking are not covered by the warranty.

CPU FSB Setting (FJ1,FJ2)

The FSB Frequency can also be set through jumpers FJ1 and FJ2 and it may therefore differ from the Frequency the CPU specifies. Doing so may however force your CPU to operate out of its specifications and therefore SOYO can not guarantee the proper functioning of your system.

SY-K7VTA PRO V1.0 Quick Start Guide

Refer to the following table:

CPU FSB Setting	FJ1	FJ2
200MHz	Short Pin2-3 	Short Pin2-3 
266MHz	Short Pin1-2 	Short Pin1-2 

Step 3. Connections to the Motherboard

This section tells how to connect internal peripherals and the power supply to the Motherboard.

The internal peripherals consist of IDE devices (HDD, CD-ROM), Floppy Disk Drive, Chassis Fan, Front Panel Devices (STR LED Internal Speaker, Reset Button and IDE LED Switch.), Wake-On-LAN card, VGA card, Sound Card, and other devices.

For more details on connecting internal and external peripherals to your new SY-K7VTA PRO V1.0 Motherboard, please refer to *SY-K7VTA PRO V1.0 Motherboard User's Guide and Technical Reference* online manual on the CD-ROM.

SY-K7VTA PRO V1.0 Quick Start Guide

Connectors and Plug-ins

Standard IrDA (Infrared Device Header): SIRCON					Wake-On-LAN Header: J10			
Pin1	Pin2	Pin3	Pin4	Pin5	Pin1	Pin2	Pin3	
+5V	NC	IRRX	GND	IRTX	5VSB	GND	RING	
USB3_4: USB3				USB3_4: USB4				
Pin1	Pin3	Pin5	Pin7	Pin2	Pin4	Pin6	Pin8	Pin10
+5V	Data(-)	Data(+)	GND	+5V	Data(-)	Data(+)	GND	GND
CPU Cooling Fan: CPUFAN1			CPU Cooling Fan: CPUFAN2					
Pin1	Pin2	Pin3	Pin1	Pin2	Pin3			
GND	+12V	SENSOR	GND	+12V	NC			
Chassis Fan: CHAFAN			Chip Cooling Fan: ChipFAN					
Pin1	Pin2	Pin3	Pin1	Pin2	Pin3			
GND	+12V	SENSOR	GND	+12V	NC			
CD Line-in: CDIN1								
Connect the CD Line-in cord from the CD-ROM device to the matching header CDIN1				Pin 1	Pin 2	Pin 3	Pin 4	
				L	G	G	R	
<p>The diagram shows a 12-pin connector with the following connections: - Pins 1-2: HDD LED (-, +) - Pins 3-4: STR LED (-, +) - Pin 5: PWRBT (1) - Pin 6: Reset (1) - Pins 7-8: Speaker (-, +) - Pins 9-10: Power LED (-, +)</p>				Power LED				
Pin1		Pin2		Pin3				
LED		NC		GND				
Speaker								
Pin1		Pin2		Pin3		Pin4		
VCC		NC		NC		Speaker out		
HDD LED		PWRBT		RESET		STR LED ※		
Pin1	Pin2	Pin1	Pin2	Pin1	Pin2	Pin1	Pin2	
LED	GND	PW-BT	GND	Power RST	GND	LED Anode	GND	
ATX POWER On/Off: PWRBT								
Connect your power switch to this header (momentary switch type). To turn off the system, please press this switch and hold down for longer than 4 seconds.								
ATX Power Supply: ATX PW								
Attach the ATX Power cable to this connector. (This motherboard requires an ATX power supply, an AT power supply can NOT be used.) When using the Power-On by PS/2 Keyboard function, please make sure the ATX power supply is able to provide at least 720mA on the 5V Standby lead (5VSB) in order to meet the standard ATX specifications.								

Hardware Installation

※Note: The STR LED is connected to the Voltage that feeds the DIMM sockets. Therefore the following table applies:

	Suspend to RAM	Normal Operation	Power Off
STR LED	Blinking	ON	OFF

SY-K7VTA PRO V1.0 Quick Start Guide

Step 4. Configure Memory

Supports PC133/ PC100 SDRAM and Virtual Channel Memory (VCM) SDRAM up to 3 DIMMs and using system memory up to 1.5GB.


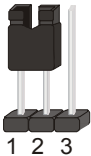
Memory Configuration Table

Number of Memory Modules	DIMM 1	DIMM 2	DIMM3
RAM Type	SDRAM/ VCM SDRAM		
Memory Module Size (MB)	32/64/128/256/512 MB		

How to Clear CMOS Data(JP5)

In some cases the CMOS memory may contain wrong data, follow the steps below to clear the CMOS memory.

1. Clear the CMOS memory by momentarily shorting pin 2-3 on jumper JP5. Its white colored cap can easily identify this jumper.
2. Then put the jumper back to 1-2 to allow writing of new data into the CMOS memory.

CMOS Clearing	Clear CMOS Data	Retain CMOS Data
JP5 Setting	Short pin 2-3 for at least 5 seconds to clear the CMOS 	Short pin 1-2 to retain new settings 
<i>Note: You must unplug the ATX power cable from the ATX power connector when performing the CMOS Clear operation.</i>		

3 **Quick BIOS Setup**

This Motherboard does not use any hardware jumpers to set the CPU frequency. Instead, CPU settings are software configurable with the BIOS **[SOYO COMBO SETUP]**. The **[SOYO COMBO SETUP]** combines the main parameters that you need to configure, all in one menu, for a quick setup in BIOS.

After the hardware installation is complete, turn the power switch on, then press the **** key during the system diagnostic checks to enter the Award BIOS Setup program. The CMOS SETUP UTILITY will be shown on the screen. Then, follow these steps to configure the CPU settings.

Step 1. Select [STANDARD CMOS SETUP]

Set [Date/Time] and [Floppy drive type], then set [Hard Disk Type] to "Auto".

Step 2. Select [LOAD Optimized DEFAULT]

Select the "LOAD Optimized DEFAULT" menu and type "Y" at the prompt to load the BIOS optimal setup.

Step 3. Select [SAVE & EXIT SETUP]

Press **<Enter>** to save the new configuration to the CMOS memory, and continue the boot sequence.

4 The SOYO CD

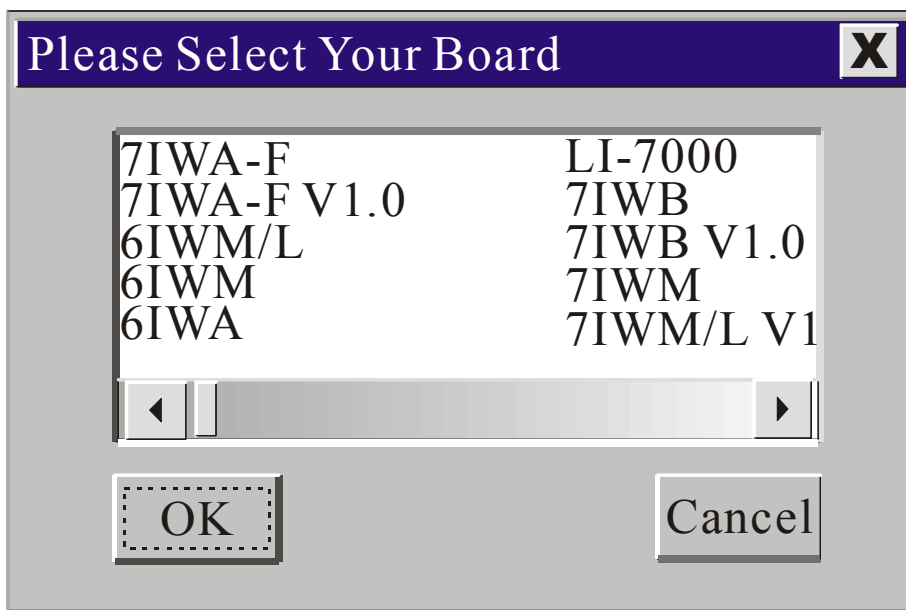


The SOYO-CD will NOT autorun if you use it on an Operating System other than Windows 95/98/98SE/ME.

Your SY-K7VTAPRO V1.0 Motherboard comes with a CD-ROM labeled "SOYO CD." The SOYO CD contains (1) the user's manual file for your new Motherboard, (2) the drivers/software available for installation, and (3) a database in HTML format with information on SOYO Motherboards and other products.

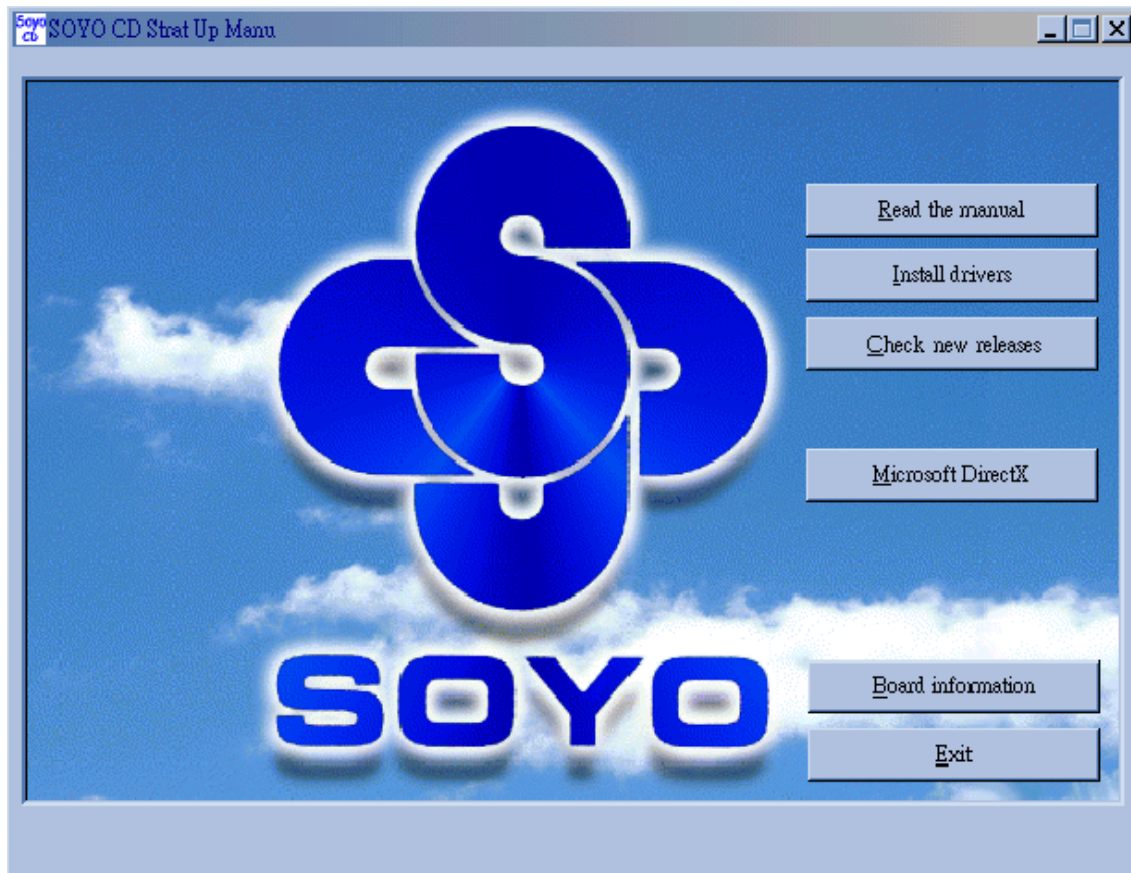
Step 1. Insert the SOYO CD into the CD-ROM drive

If you use Windows NT or 2000, the SOYO-CD will not detect your motherboard type. In that case the following dialog will pop up, please choose your motherboard and press OK. Now the SOYO-CD Start Up Menu will be shown.



(SOYO CD Start Up Program Menu)

If you use Windows 95/98/ME, the SOYO CD Start Up Program automatically detects which SOYO Motherboard you own and displays the corresponding model name.



The user's manual files included on the SOYO CD are in PDF (Postscript Document) format. In order to read a PDF file, the appropriate Acrobat Reader software must be installed in your system.

Note: The Start Up program automatically detects if the Acrobat Reader utility is already present in your system, and otherwise prompts you on whether or not you want to install it. You must install the Acrobat Reader utility to be able to read the user's manual file. Follow the instructions on your screen during installation, then once the installation is completed, restart your system and re-run the SOYO CD.

Step 2. Install Drivers and Utilities

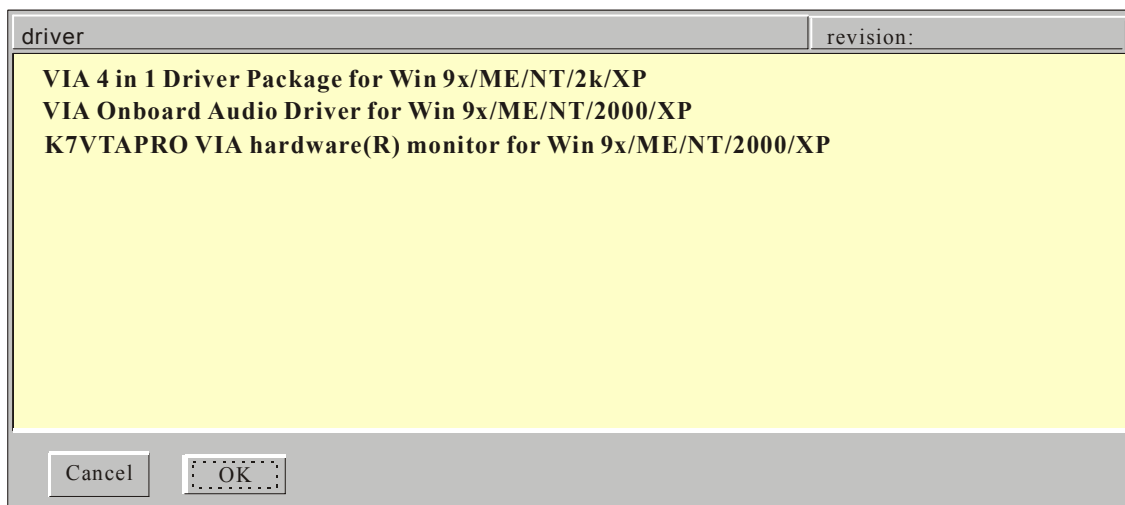
Click the **Install Drivers** button to display the list of drivers/ software that can be installed with your Motherboard. The Start Up program displays the drivers available for the particular model of Motherboard you own. We recommend that you only install those drivers.

Drivers that are needed to install for the system to operate properly

1. Via 4 in 1 driver
2. VIA on-board audio driver

The rest of the available driver is optional.

SY-K7VTA PRO V1.0 Quick Start Guide



(Driver Installation Menu)

A short description of all available drivers follows:

➤ **VIA 4in1 Driver Package for Win 9x/ME/NT/2k/XP**

VIA4 In 1 driver includes four system drivers to improve the performance and maintain the stability of systems using VIA chipsets. These four drivers are:

VIA Registry (INF) Driver, VIAAGP VxD driver, VIAATAPI Vendor Support Driver and VIA PCI IRQ Miniport Driver. For Windows NT users, the VIA IDE Bus Mastering driver is the only driver to be installed in your system.

A description of 4 drivers follows:

— **Bus Master PCI IDE Driver**

The ATAPI IDE driver enables the performance enhancing bus mastering functions on ATA-capable Hard Disk Drives and ensures IDE device compatibility.

— **VxD Driver**

VIAAGP VxD Driver is to be installed if you are using an AGP VGA device. VIAGART.VXD will provide service routines to your VGA driver and interface directly to hardware, providing fast graphical access.

— **VIA Chipset Functions Registry**

VIA Registry (INF) Driver is to be installed under Windows. The driver will enable the VIA Power Management function.

— **IRQ remapping utility (This driver is installed automatically)**

VIA PCI IRQ Miniport Driver is to be installed under Windows 98 only, it sets the system's PCI IRQ routing sequence.

➤ **VIA Onboard Audio Driver for Win 9x/ME/NT/2000/XP**

You have to install the drivers before installing any application for the Onboard Audio.

➤ **K7VTAPRO VIA hardware(R) monitor for 9x/ME/NT/2000/XP**

Your motherboard comes with a hardware monitoring IC. By installing this utility Temperature, Fan speed and Voltages can be monitored. It is also possible to set alarms when current system values exceed or fall below pre-set values.

Select which driver you want to install and click **OK**, or click **Cancel** to abort the driver installation and return to the main menu.

Note: Once you have selected a driver, the system will automatically exit the SOYO CD to begin the driver installation program. When the installation is complete, most drivers require to restart your system before they can become active.

Step 3. Check the Latest Releases

Click the 'Check the latest Releases' button to go the SOYO Website to automatically find the latest BIOS, manual and driver releases for your motherboard. This button will only work if your computer is connected to the internet through a network or modem connection. Make sure to get your modem connection up before clicking this button.

(* *Internet Explorer is a Microsoft Trademark*)

Quick Trouble shoot tips

What to check when you encounter :

Boot-up issue

The system do not power-up, no beeping sound heard and the CPU fan does not turn on.

1. check if the power cord is plug to the power source
2. check if the power is connected to the M/B
3. check if the case power button is connected to the M/B power button connector (see connectors and plug-ins in the Quick start guide for more info)
4. make sure the power supply is not defective. Change the power supply.
5. remove the M/B from the case and test the system. The M/B might be shorted to the case.
6. if everything else fail. The M/B is defective

The system power-up, no video, no beeping sound heard, but the CPU fan is turning.

1. clear CMOS battery. (JP5 connector, see Quick start guide for more info on how to clear the CMOS)
2. check all the jumper settings on the M/B. (if the M/B have any)
3. check if the CPU is ok by using another CPU (check the Quick start guide for CPU supported on this M/B)
4. check if the power supply is ok
5. make sure the CPU fan is connected to CPUFAN1 connector (for K7 and P4 M/B only)
6. remove the M/B from the case and test the system. The M/B might be shorted to the case.
7. M/B is defective.

The system power-up, no video, CPU fan is spinning and beeping heard.

1. clear CMOS battery. (JP5 connector, see Quick start guide for more info on how to clear the CMOS)
2. check the memory module and the VGA card if inserted properly on the M/B
3. if yes, change the memory module, it might be defective. Make sure the memory specification is supported by the M/B. (for more info on this, check our FAQ website)
4. change the VGA card

The system turns on for some seconds then shutdown by itself.

1. check if the CPU fan is connected to the CPUFAN1 connector (For K7 and P4 M/B only)
2. the CPU might be overheating. Check the CPU FAN if it is defective or see if the CPU fan is in contact with the CPU.
3. clear CMOS battery. (JP5 connector, see Quick start guide for more info on how to clear the

CMOS)

4. make sure the power supply you have on your system support the M/B specification.
Example. If you have a P4 M/B, you need to use a P4 power supply.
5. if you already checked the power supply specification, change the power supply it might be defective.
6. remove the M/B from the case and test the system. The M/B might be shorted to the case.

When I boot up my system, everything works fine, it sees my CPU and memory, detects my hard drive, floppy drive and CD-ROM but locks up at "Verify DMI pool data... ". Don't go any further.

What should I do?

1. clear CMOS battery. (JP5 connector, see Quick start guide for more info on how to clear the CMOS)
2. if still has the problem, unplug all other add-on cards except video card and floppy drive see if it can boot from floppy. Then put peripherals in one by one to identify which one cause the lockup
3. change the CPU

During Boot-up, my computer says CMOS memory Checksum error. What is the problem?

1. clear CMOS memory
2. re-flash BIOS. Check on how to flash bios on the later part of this book
3. change the CMOS battery, the battery might be drained
4. the BIOS chip might be failing
5. This message will come up if the CMOS has been reset, try go to Bios setup and load setup defaults, save and exit.

Stability issue

My system intermittently locks up, very unstable

1. check the CPU temp. it might be overheating. Check the CPU FAN if it is defective or see if the CPU fan is in contact with the CPU.
2. check if there's heat paste on the CPU. (applicable only for K7 M/B)
3. do not overclock your CPU
4. check the specification of the memory module, maybe the M/B do not support it.
5. go to BIOS setup and load fail safe settings
6. check website for latest bios update
7. check website for FAQ's regarding instability issue
8. change the memory module or CPU

My system is not stable under Windows Operating System with VIA chipset M/B

SY-K7VTA PRO V1.0 Quick Start Guide

1. do all the “My system intermittently locks up, very unstable” instruction above
2. re-install the VIA 4 in 1 in normally mode
3. re-install the operating system

BIOS issue

Where can I find the BIOS revision of my mainboard?

It will be displayed on the up-left corner on the screen during boot-up. It will show as your board type followed by the revision number, such as kvxa_2BA1 (meaning BIOS revision 2BA1 for the SY-K7V Dragon plus board) or 6BA+IV_2AA2 which means SY-6BA+IV motherboard with 2AA2 bios.

How can I flash the BIOS?

1. download the BIOS on our support website
2. Make a bootable floppy disk with out any memory manager loaded. (i.e. himem, emm386, etc..)
3. copy the BIOS file and awdflash utility to the diskette
4. type "awdflash biosname.bin /sn /py"
5. then reboot.
6. it is advisable to clear the CMOS memory

After flashing the BIOS, my system will not boot-up

1. try clearing the CMOS
2. the BIOS chip is defected due to unsuccessful flash, contact your nearest Soyo branch for re-flashing

Is there a way to reprogram my BIOS after an unsuccessful flash?

No, you need to send back the BIOS ROM to your nearest Soyo branch for re-flashing.

CPU issue

During Boot-up, my CPU speed is displayed wrong.

Check the jumper on the M/B, if the CPU frequency is set to 133MHz.

VGA issue

I cannot set my VGA to go higher than 16 color in M/B with VIA chipset (640x 480)

Make sure that you have installed the VIA 4 in 1 driver and the correct VGA driver

Audio issue

How can I disable the on-board Audio?

Go to the SOYO Combo Feature in the BIOS setup, then set the "Onchip sound" or "AC97 Audio" to disable. Please also make sure 'Legacy Audio' is disable if there is one.

I cannot get the sound working on my system.

1. check if the speaker wire is connected to the line out connector in the M/B
2. check if the speaker power is powered on
3. install the audio driver supplied on our driver disc.
4. if sound already installed, check our website for audio driver update.

The sound is working in my system, but when I play CD music from the CD-ROM, I do not get any sound. What is wrong?

This is because the 3-wire audio cable from the CD-ROM to the on-board CDIN1 connector in the M/B.

The sound from my sound card is distorted when Windows start. What is wrong?

1. if you are using an ISA sound card, please make sure the IRQ needed for the sound card is set to 'Legacy ISA' in the bios. In other word, if your ISA sound card takes IRQ5, then set IRQ5 to 'Legacy ISA'.
2. install the VIA 4 in 1 driver for the motherboard

The sound and everything else works fine except that the recorder and microphone do not work. What is wrong?

Please go to sound properties and check if the recorder and microphone in the are enabled
check if Microphone is ok

Hard disk issue

My Western digital HDD is not detected during boot-up or No fix disk present.

Change the jumper settings to cable select or single or remove the jumpers.

For updated FAQs, please check <http://www.soyo.com.tw/faq.htm> or

<http://www.soyousa.com/faqs.html>

SY-K7VTA PRO V1.0 Quick Start Guide

How to contact us:

- If you are interested in our products, please contact the SOYO sales department in the region you live.
- If you require Technical Assistance, please contact our Technical Support in the region you live.

SOYO prefers Email as communication medium, remember to *always add to the email the country that you live in.*

TAIWAN

SOYO COMPUTER INC.

No. 21 Wu-Kung 5 Rd., Hsin Chuang
City, Taipei Hsien, Taiwan, R.O.C

TEL: 886-2-22903300

FAX: 886-2-22983322

<http://www.soyo.com/>

Email: info@mail.soyo.com.tw

Hong Kong

SOYO ASIA LTD.

5C, Big Star Centre, 8 Wang Kwong
Road, Kowloon Bay, Kowloon, HK

TEL: 852-2710-9810

FAX: 852-2710-9078

<http://www.soyo.com.hk/>

Email: soyo@hkstar.com

USA

SOYO INC.

41484 Christy Street, Fremont, CA
94538, USA

TEL: 1-510-226-7696

FAX: 1-510-226-9218

<http://www.soyousa.com/support>

Email : sales@soyousa.com

GM

SOYO Deutschland GmbH
(SAAT Technology GmbH)

August-Wilhelm-Kuhnholz-Str. 15
D-26135 Oldenburg (Oldb), Germany

TEL: 49-441-209-100

FAX: 49-441-203-442

<http://www.soyo.de/>

Email: sales@soyo.de

Edition: September 2002
Version 1.0
SY-K7VTA PRO V1.0
SERIAL



Free Manuals Download Website

<http://myh66.com>

<http://usermanuals.us>

<http://www.somanuals.com>

<http://www.4manuals.cc>

<http://www.manual-lib.com>

<http://www.404manual.com>

<http://www.luxmanual.com>

<http://aubethermostatmanual.com>

Golf course search by state

<http://golfingnear.com>

Email search by domain

<http://emailbydomain.com>

Auto manuals search

<http://auto.somanuals.com>

TV manuals search

<http://tv.somanuals.com>