

# **SY-6BE+** **Motherboard**

## **Quick Start Guide**

Introduction

Hardware  
Installation

Quick BIOS  
Setup

The SOYO CD

# SY-6BE+ Motherboard

Pentium® III, Pentium® II & Celeron™ processors  
82440 BX AGP/PCI Motherboard  
66&100MHz Front Side Bus supported  
ATX Form Factor

Copyright © 1999 bySoyo Computer Inc.

## **Trademarks:**

Soyo is a registered trademark of Soyo Computer Inc. All trademarks are the property of their owners.

## **Product Rights:**

Product and corporate names mentioned in this publication are used for identification purposes only and may be registered trademarks or copyrights of their respective companies.

## **Copyright Notice:**

All rights reserved. This manual is copyrighted by Soyo Computer Inc. You may not reproduce, transmit, transcribe, store in a retrieval system, or translate into any language, in any form or by any means, electronic, mechanical, magnetic, optical, chemical, manual or otherwise, any part of this publication without express written permission of Soyo Computer Inc.

## **Disclaimer:**

Soyo Computer Inc. makes no representations or warranties regarding the contents of this manual. We reserve the right to revise the manual or make changes in the specifications of the product described within it at any time without notice and without obligation to notify any person of such revision or change. The information contained in this manual is provided for general use by our customers. Our customers should be aware that the personal computer field is the subject of many patents. Our customers should ensure that their use of our products does not infringe upon any patents. It is the policy of Soyo Computer Inc. to respect the valid patent rights of third parties and not to infringe upon or assist others to infringe upon such rights.

## **Restricted Rights Legend:**

Use, duplication, or disclosure by the Government is subject to restrictions set forth in subparagraph (c)(1)(ii) of the Rights in Technical Data and Computer Software clause at 252.277-7013.

## **About This Guide:**

This Quick Start Guide is for assisting system manufacturers and end users in setting up and installing the Motherboard. Information in this guide has been carefully checked for reliability; however, no guarantee is given as to the correctness of the contents. The information in this document is subject to change without notice.

If you need any further information, please visit our **Web Site** on the Internet. The address is "<http://www.soyo.com.tw>".

## **6BE+ Serial - Version 2.4 - Edition: December 1999**

\* These specifications are subject to change without notice

# 1 Introduction

Congratulations on your purchase of the **SY-6BE+** Motherboard. This *Quick Start Guide* describes the steps for installing and setting up your new Motherboard.

This guide is designed for all users to provide the basic steps of Motherboard setting and operation. For further information, please refer to *SY-6BE+ Motherboard User's Guide* and *Technical Reference* online manual included on the CD-ROM packed with your Motherboard.

## Unpacking

When unpacking the Motherboard, check for the following items:

---

◆ The SY-6BE+ 82440 BX AGP/PCI Motherboard

---




---

◆ The Quick Start Guide

---




---

◆ The Installation CD-ROM

---




---

◆ SOYO 3-in-1 Bonus Pack CD-ROM (Norton AntiVirus, Ghost and Virtual Drive)

---




---

◆ The CPU Retention Set

---




---

◆ One IDE Device Flat Cable

---




---

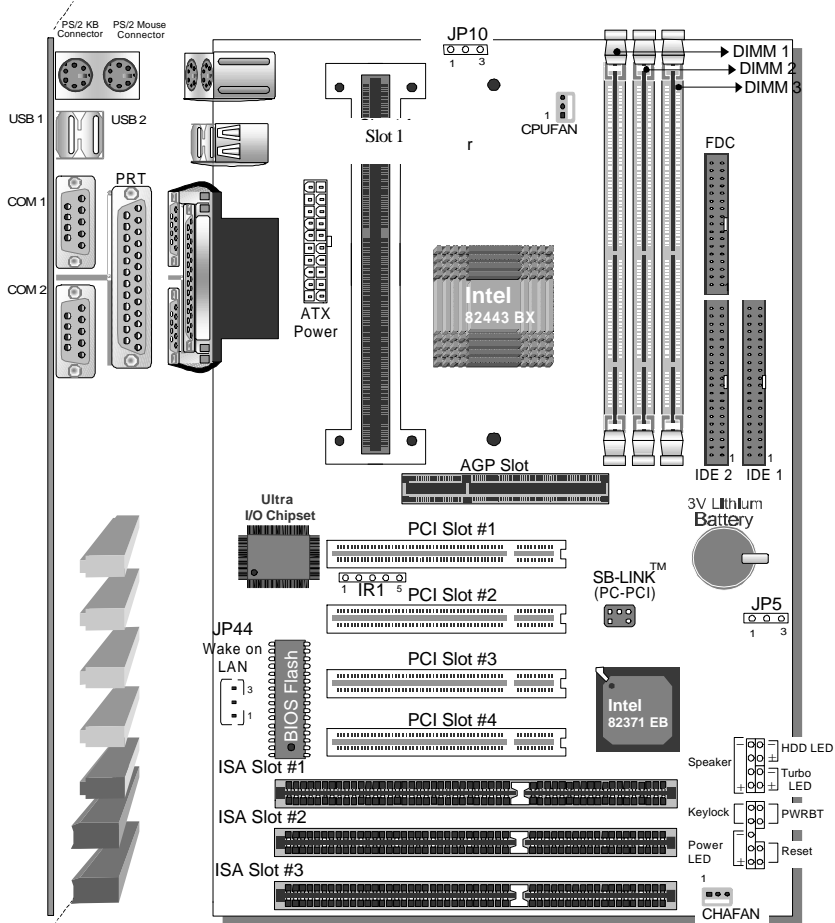
◆ One Floppy Disk Drive Flat Cable

---



*SY-6BE+ Motherboard Layout*

Introduction



**Key Features**

- Supports Intel Pentium® III processor (450-600MHz), Pentium® II processor (233-450MHz) & Celeron™ processor (266-433MHz)
- Auto-detect CPU voltage
- PC98, ACPI, Ultra DMA/33
- Power-on by modem, alarm or keyboard
- SOYO COMBO Setup
- Supports Wake-On-LAN (WOL)
- Supports onboard hardware monitoring and includes Hardware Doctor™ utility
- Supports Creative SB-LINK™ (PC-PCI) for PCI audio card
- 1 x 32-bit AGP slot
- 4 x 32-bit bus master PCI slots
- 2 x USB ports onboard
- 1 x IrDA port
- Supports multiple-boot function
- Y2K Compliant

## 2 Installation



To avoid damage to your Motherboard, follow these simple rules while handling this equipment:

- Before handling the Motherboard, ground yourself by grasping an unpainted portion of the system's metal chassis.
- Remove the Motherboard from its anti-static packaging. Hold it by the edges and avoid touching its components.
- Check the Motherboard for damage. If any chip appears loose, press carefully to seat it firmly in its socket.

Follow the directions in this section designed to guide you through a quick and correct installation of your new **SY-6BE+** Motherboard. For detailed information, please refer to *SY-6BE+ Motherboard User's guide and Technical Reference* online manual included on the CD-ROM packed with your Motherboard.

### PREPARATIONS

Gather and prepare all the necessary hardware equipment to complete the installation successfully:

- ◆ Slot 1 processor with built-in CPU cooling fan (boxed type)
- ◆ SDRAM module
- ◆ Computer case and chassis with adequate power supply unit
- ◆ Monitor
- ◆ PS/2 Keyboard
- ◆ Pointing Device (PS/2 mouse)
- ◆ VGA Card
- ◆ Sound Card (optional)
- ◆ Speaker(s) (optional)
- ◆ Disk Drives: HDD, CD-ROM, Floppy drive ...
- ◆ External Peripherals: Printer, Plotter, and Modem- (optional)
- ◆ Internal Peripherals: Modem and LAN cards (optional)

## SY-6BE+ Quick Start Guide

### Install the Motherboard

Follow the steps below in order to perform the installation of your new **SY-6BE+** Motherboard.

#### Step 1. Install the CPU

**Mark your CPU Frequency:** Record the working frequency of your CPU that should be clearly marked on the CPU cover.





##### FSB 66MHz

<input type="checkbox"/> 266MHz (66 x 4.0)	<input type="checkbox"/> 333MHz (66 x 5.0)	<input type="checkbox"/> 400MHz (66 x 6.0)	<input type="checkbox"/>
<input type="checkbox"/> 300MHz (66 x 4.5)	<input type="checkbox"/> 366MHz (66 x 5.5)	<input type="checkbox"/> 433MHz (66 x 6.5)	

##### FSB 100MHz

<input type="checkbox"/> 350MHz (100 x 3.5)	<input type="checkbox"/> 450MHz (100 x 4.5)	<input type="checkbox"/> 550MHz (100 x 5.5)	<input type="checkbox"/>
<input type="checkbox"/> 400MHz (100 x 4.0)	<input type="checkbox"/> 500MHz (100 x 5.0)	<input type="checkbox"/> 600MHz (100 x 6.0)	

**CPU Mount Procedure:** To mount the processor that you have purchased separately, follow these instructions.

Retention Module	Step 1.
	Open the two sides by folding them up. 
<b>Step 2.</b> Insert the CPU into the retention module. The CPU fits in the CPU slot in only ONE way, do not try to force it in.	<b>Step 3.</b> After completely inserting the CPU, Now your CPU is ready for use.
	

*Note: Installing a heat sink and cooling fan on top of your CPU is necessary for proper heat dissipation. Failing to install these items may result in overheating and possible burn-out of your CPU.*

**Step 2. Make Connections to the Motherboard**

This section tells how to connect internal peripherals and power supply to the Motherboard.

Internal peripherals include IDE devices (HDD, CD-ROM), Floppy Disk Drive, Chassis Fan, Front Panel Devices (Turbo LED, Internal Speaker, Reset Button, IDE LED, and KeyLock Switch.), Wake-On-LAN card, VGA card, Sound Card, and other devices.

For more details on how to connect internal and external peripherals to your new SY-6BE+ Motherboard, please refer to *SY-6BE+ Motherboard User's Guide and Technical Reference* online manual on CD-ROM.

**Connectors and Plug-ins**

<b>PCI Audio Card Header: SB-Link™(PC-PCI)</b>				<b>Wake-On-LAN Header: JP44</b>			
Connect the SB-Link™(PC-PCI) cable from your PCI audio card to this header.				Pin1	Pin2	Pin3	
				5VSB	GND	MP-Wakeup	
<b>CPU Cooling Fan: CPUFAN</b>			<b>Chassis Fan: CHAFAN</b>				
Pin1	Pin2	Pin3	Pin1	Pin2	Pin3		
GND	12V	SENSOR	GND	12V	SENSOR		
			<b>Power LED</b>		<b>Keylock</b>		
			Pin1	Pin2	Pin3	Pin1	Pin2
			5V	NC	GND	Control Pin	GND
			<b>Speaker</b>				
			Pin1	Pin2	Pin3	Pin4	
			5V	NC	NC	Speaker out	
<b>HDD LED</b>		<b>Turbo LED</b>		<b>PWRBT</b>		<b>RESET</b>	
Pin1	Pin2	Pin1	Pin2	Pin1	Pin2	Pin1	Pin2
LED Anode	LED Cathode	LED Cathode	GND	Power On/Off	GND	Power Good	GND
<b>IrDA (Infrared Device Header): IR1</b>							
Pin1		Pin2		Pin3		Pin5	
VCC		None		IRRX		GND	
<b>ATX Power On/Off: PWRBT</b>				<b>ATX Power Supply: ATX PW</b>			
Connect your power switch to this header (momentary switch type).				Attach the ATX Power cable to this connector. (This motherboard requires an ATX power supply, an AT power supply can NOT be used.)			
<b>To turn off the system, please press this switch and hold down for longer than 4 seconds.</b>				<b>Note: Please make sure the ATX power supply is able to provide at least 720mA of current on the +5VSB lead if you want to enable the advanced power management functions, like Wake-On-LAN, Power-On by keyboard, etc.</b>			

Hardware Installation

## SY-6BE+ Quick Start Guide

### Step 3. Configure Memory

Your board comes with three DIMM sockets, providing support for up to 768MB of main memory using DIMM modules from 8MB to 256MB. For 66MHz front side bus CPUs use 12ns or faster memory; for 100MHz front side bus CPUs use 8ns (100MHz, PC100 compliant) memory.

### Memory Configuration Table

Number of Memory Modules	DIMM 1	DIMM 2	DIMM 3
1	1 <sup>st</sup>		
2	1 <sup>st</sup>	2 <sup>nd</sup>	
3	1 <sup>st</sup>	2 <sup>nd</sup>	3 <sup>rd</sup>
<b>RAM Type</b>	SDRAM		
<b>Memory Module Size (MB)</b>	8/16/32/64/128/256 Mbytes		
<b>Note:(1) 256 MB memory modules only available on PC registered DIMM.                      (2) Always install memory modules in the order prescribed in this table.                      (3) Do not install unbuffered and registered memory modules together.</b>			



**Important:** It is of prime importance that you install DIMM modules as outlined in the table above in order to preserve signal integrity on 100MHz front side bus systems.

### Step 4. Set the CPU Frequency

This Motherboard does not use any jumpers to set the CPU frequency, CPU setting are changed through the BIOS [SOYO COMBO SETUP]. Refer to Chapter 3 "Quick BIOS Setup" for details on how to set the Slot 1 processor frequency.

### Step 5. Enable/Disable Power-On by Keyboard (JP10)

You can choose to enable the Power-On by Keyboard function by shorting pin 1-2 on jumper JP10, otherwise, short pin 2-3 to disable this function.


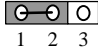
Power-On by Keyboard	Enable	Disable
<b>JP10 Setting</b>	Short pin 1-2 to enable the Power-On by Keyboard function.  1 2 3	Short pin 2-3 to disable the Power-On by Keyboard function.  1 2 3

**Important:** When using the Power-On by Keyboard function, please make sure the ATX power supply can take at least 720mA load on the 5V Standby lead (5VSB) to meet the standard ATX specification.



**Step 6.** Clear CMOS Data (JP5)

Clear the CMOS memory by momentarily shorting pin 2-3 on jumper JP5 for at least 5 seconds, and then by shorting pin 1-2 to retain new settings. This jumper can be easily identified by its white colored cap.

CMOS Clearing	Clear CMOS Data	Retain CMOS Data
<b>JP5 Setting</b>	Short pin 2-3 for <b>at least 5 seconds</b> to clear the CMOS. 	Short pin 1-2 to retain the new settings. 
<b>Note:</b> You must unplug the ATX power cable from the ATX power connector when performing the CMOS Clear operation.		



**Note on Over-clocking Capability**

The SY-6BE+ provides over-clocking capability. Due to the over-clocking setting your system may fail to boot up or hang during run time. Please perform the following steps to recover your system from the abnormal situation :

1. Turn off system power. (If you use a ATX power supply, sometimes you have to press the power button for more then 4 seconds to shut down the system)
2. Press and hold down the <Insert> key while turning on the system power. Keep holding down the <Insert> key until you see the message of the CPU type and frequency shown on the screen.
3. Press the <Del> key during the system diagnostic checks to enter the Award BIOS Setup program.
4. Select [SOYO COMBO SETUP] and move the cursor to the [CPU Frequency] field to set the proper working frequency.
5. Select [Save & Exit SETUP] and press <Enter> to save the new configuration to the CMOS memory, and continue the boot sequence.

**Note: SOYO does not guarantee system stability if the user over clocks the system. Any malfunctions due to over-clocking are not covered by the warranty.**

# 3 Quick BIOS Setup

This Motherboard does not use any hardware jumpers to set the CPU frequency. Instead, CPU settings are software configurable with the BIOS **[SOYO COMBO SETUP]**. The **[SOYO COMBO SETUP]** menu combines the main parameters that you need to configure, all in one menu, for a quick setup in BIOS.

After the hardware installation is complete, turn the power switch on, then press the **<DEL>** key during the system diagnostic checks to enter the Award BIOS Setup program. The CMOS SETUP UTILITY will display on screen. Then, follow these steps to configure the CPU settings.

**Step 1.** Select **[STANDARD CMOS SETUP]**

Set **[Date/Time]** and **[Floppy drive type]**, then set **[Hard Disk Type]** to "Auto".

**Step 2.** Select **[LOAD SETUP DEFAULT]**

Select the "LOAD SETUP DEFAULT" menu and type "Y" at the prompt to load the BIOS optimal setup.

**Step 3.** Select **[SOYO COMBO SETUP]**

Move the cursor to the **[CPU Frequency]** field to set the CPU frequency.

Available **[CPU Frequency]** settings on your SY-6BE+ Motherboard are detailed in the following table. If you set this field to **[Manual]**, you are then required to fill in the next two consecutive fields: (1) the CPU Host/PCI Clock, and (2) the CPU Ratio.

CPU Frequency		Select the working frequency of your Pentium® III, Pentium® II, Celeron™ processor among these preset values.  <b>Note:</b> <input checked="" type="checkbox"/> Mark the checkbox that corresponds to the working frequency of your Pentium® III, Pentium® II, Celeron™ processor in case the CMOS configuration should be lost.
<input type="checkbox"/> 233MHz (66 x 3.5)	<input type="checkbox"/> 350MHz (100 x 3.5)	
<input type="checkbox"/> 266MHz (66 x 4.0)	<input type="checkbox"/> 400MHz (100 x 4.0)	
<input type="checkbox"/> 300MHz (66 x 4.5)	<input type="checkbox"/> 450MHz (100 x 4.5)	
<input type="checkbox"/> 333MHz (66 x 5.0)	<input type="checkbox"/> 500MHz (100 x 5.0)	
<input type="checkbox"/> 366MHz (66 x 5.5)	<input type="checkbox"/> 550MHz (100 x 5.5)	
<input type="checkbox"/> 400MHz (66 x 6.0)	<input type="checkbox"/> 600MHz (100 x 6.0)	
<input type="checkbox"/> 433MHz (66 x 6.5)	<input type="checkbox"/>	

**Note:** if you use Bus Frequencies of 75 MHz, make sure that your PCI cards can cope with the higher PCI clock.

**Step 4.** Select **[SAVE & EXIT SETUP]**

Press **<Enter>** to save the new configuration to the CMOS memory, and continue the boot sequence.

## 4 The SOYO CD

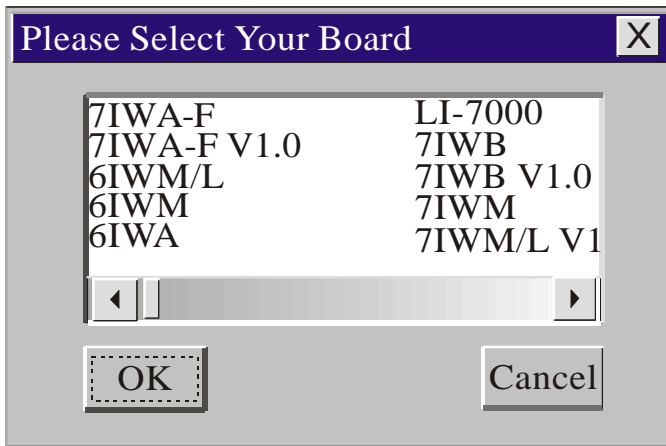


**The SOYO-CD will NOT autorun if you use it on an Operating System other than Windows 9x or NT.**

Your SY-6BE+ Motherboard comes with a CD-ROM labeled "SOYO CD." The SOYO CD contains (1) the user's manual file for your new Motherboard, (2) the drivers software available for installation, and (3) a database in HTML format with information on SOYO Motherboards and other products.

**Step 1.** Insert the SOYO CD into the CD-ROM drive  
The SOYO CD will auto-run, and the SOYO CD Start Up Menu will be as shown.

If you use Windows NT, the SOYO-CD will not detect your motherboard type. In that case the following dialog will pop up, please choose your motherboard and press OK. Now the SOYO-



CD Start Up Menu will be shown.

### (SOYO CD Start Up Program Menu)

If you use Windows 95 or 98, the SOYO CD Start Up Program automatically detects which SOYO Motherboard you own and displays the corresponding model name.

## SY-6BE+ Quick Start Guide

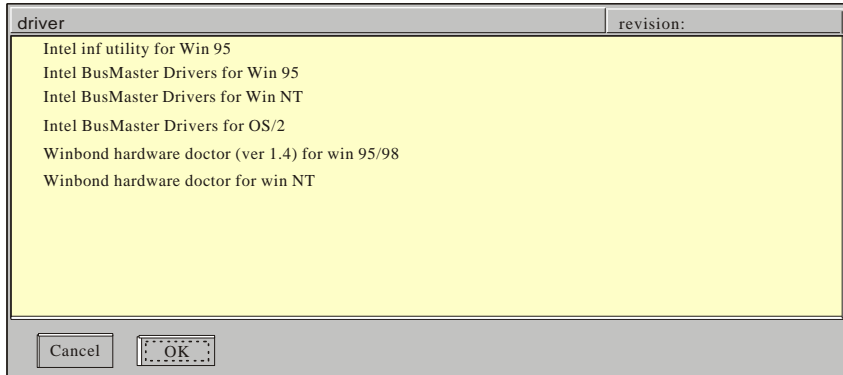


The user's manual files included on the SOYO CD are in PDF (Postscript Document) format. In order to read a PDF file, the appropriate Acrobat Reader software must be installed in your system.

**Note:** The Start Up program automatically detects if the Acrobat Reader utility is already present in your system, and otherwise prompts you on whether or not you want to install it. You must install the Acrobat Reader utility to be able to read the user's manual file. Follow the instructions on your screen during installation, then once the installation is completed, restart your system and re-run the SOYO CD.

### **Step 2.** Install Drivers and Utilities

Click the Install Drivers button to display the list of drivers software that can be installed with your Motherboard. The Start Up program displays the drivers available for the particular model of Motherboard you own. We recommend that you only install those drivers.



**(Driver Installation Menu)**

However, to display the list of all drivers software available with SOYO Motherboards, click the *Display all drivers on the SOYO CD* button. Please make sure to install only the drivers adapted to your system, or otherwise this cause system malfunctions.

**A short description of all available drivers follows:**

➤ **Intel .inf utility for Win 95**

Because Windows 95 does not recognize the Southbridge of the newer Intel chipsets (TX, BX, ZX etc) this utility has to be run, it will update the necessary Windows .inf files. (Only for Windows 95)

➤ **Intel Busmaster Drivers for Windows 95**

➤ **Intel Busmaster Drivers for Win NT**

➤ **Intel Busmaster Drivers for OS/2**

These are the official busmaster drivers as supplied by Intel.



**Note:** Do NEVER install two types of busmaster drivers on your system, this will lead to conflicts and system instability.

➤ **Winbond hardware doctor for Windows xx**

Your motherboard comes with a hardware monitoring IC. By installing this utility Temperature, Fan speed and Voltages can be monitored. It is also possible to set alarms when current system values exceed or fall below pre-set values.

This utility comes with a preset monitoring range for the CPU voltage. However, the core voltage of the processor you purchased may fall out of this preset range, so you may need to adjust the pre-set value. Please refer to the SY-6BE+ Motherboard's CD manual for the details.

Select which driver you want to install and click *OK*, or click *Cancel* to abort the driver installation and return to the main menu.

## SY-6BE+ Quick Start Guide

---

**Note:** Once you have selected a driver, the system will automatically exit the SOYO CD to begin the driver installation program. When the installation is complete, most drivers require to restart your system before they can become active.

### Step 3. Check the Latest Releases

Click the 'Check the latest Releases' button to go the SOYO Website to automatically find the latest BIOS, manual and driver releases for your motherboard. This button will only work if your computer is connected to the internet through a network or modem connection. Make sure to get your modem connection up before clicking this button.

### Step 4. Enter the SOYO CD

Click the **Enter SOYO CD** button to enter the SOYO HTML database. The Start Up program will activate the default HTML browser installed on your system (for example, Internet Explorer or Netscape) to visualize the contents of the SOYO CD.

The SOYO CD contains useful information about your Motherboard and other SOYO products available. For your convenience, this information is available in HTML format, similar to the format widely used on the Internet.



**Note:** If no HTML browser is installed on your system, the Start Up program will prompt you on whether or not you would like to install the Internet Explorer\* browser. Click YES to install the HTML browser. After the installation is complete, please restart your system. Then re-run the SOYO CD and you will be able to browse the SOYO HTML database.

(\* Internet Explorer is a Microsoft Trademark)

### How to contact us:

- If you are interested in our products, please contact the SOYO sales department in the region you live.
- If you require Technical Assistance, please contact our Technical Support in the region you live.

SOYO prefers Email as communication medium, remember to *always add to the email the country that you live in.*

### SOYO Taiwan

---

No. 21 Wu-Kung 5 Rd., Hsin Chuang City, Taipei Hsien, Taiwan

Region Covered: Taiwan and Asia-Pacific. (Including Australia).

Web Site: [www.soyo.com.tw](http://www.soyo.com.tw)

#### Sales:

Tel: 886-2-22903300-318

Fax: 886-2-22983322

E-mail: [salesap@mail.soyo.com.tw](mailto:salesap@mail.soyo.com.tw)

#### Technical Support:

Fax: 886-2-22983322

E-mail: [support@mail.soyo.com.tw](mailto:support@mail.soyo.com.tw)

### SOYO Europe BV

---

Signaalrood 19, 2718 SH Zoetermeer The Netherlands

Region Covered: Europe except Germany

Web Site: [www.soyo.nl](http://www.soyo.nl), [www.soyo-europe.com](http://www.soyo-europe.com)

#### Sales:

Tel: +31-69-3637500

Fax: +31-79-3637575

Email: [sales@soyo.nl](mailto:sales@soyo.nl)

#### Technical Support:

Tel : +31-79-3637500

Fax: +31-79-3637575

Email: [support@soyo.nl](mailto:support@soyo.nl)

### SOYO USA

---

41484 Christy Street, Fremont, CA 94538

Region Covered: US and Canada

Web Site: [www.soyousa.com](http://www.soyousa.com),  
[www.soyo.com](http://www.soyo.com)

#### Sales:

Tel: 510-226-7696

Fax: 510-226-9218

Email : [sales@soyosua.com](mailto:sales@soyosua.com)

#### Technical Support:

Tel: 510-226-7696

Fax: 510-226-9218

Email : [support@soyousa.com](mailto:support@soyousa.com)

### SOYO (U.K.) LTD.

---

Unit 7, Alice Way, Hounslow Business Park,  
Hanworth Road, Hounslow, TW3 3UD

Region Covered: United Kingdom and Republic of Ireland

Web Site: [www.soyo.co.uk](http://www.soyo.co.uk)

#### Sales:

Tel : +44 (0)181 569 4111

Fax: +44 (0)181 569 4134

E-mail: [sales@soyo.co.uk](mailto:sales@soyo.co.uk)

#### Technical Support:

Tel : +44 (0)181 569 4111

Fax: +44 (0)181 569 4134

## **SY-6BE+ Quick Start Guide**

---

E-Mail: [support@soyo.co.uk](mailto:support@soyo.co.uk)

### **SOYO Deutschland GmbH**

---

August-Wilhelm-Kuhnholz-Str. 15  
D-26135 Oldenburg

---

Region Covered: Germany

---

Web Site: [www.saat.de](http://www.saat.de), [www.soyo-saat.com](http://www.soyo-saat.com), [www.soyo-saat.de](http://www.soyo-saat.de)

---

*Vertrieb Mainboards, Notebooks und SoyoCom Produkte:*

E-Mail: [sales@soyo.de](mailto:sales@soyo.de)

Fon: +49-(0)441/20910-31/33

Fax: +49-(0)441/203422

*Technischer Support:*

E-Mail: [support@soyo.de](mailto:support@soyo.de)

Fon: +49-(0)441/20910-40

Fax: +49-(0)441/203422

### **SOYO KOREA**

---

Region Covered: Korea

---

*Sales:*

Tel : 82-2-716-2850

Fax : 82-2-704-2619

E-mail : [soyo@soyo.co.kr](mailto:soyo@soyo.co.kr)

*Technical Support:*

tel : 82-2-717-4392

fax : 82-2-712-5853

e-mail : [soyok@chollian.net](mailto:soyok@chollian.net)

### **SOYO Hong Kong**

---

Region Covered: Hong Kong

---

Web Site: [www.soyo.com.hk](http://www.soyo.com.hk)

*Sales:*

tel: 852-27109810

fax: 852-27109078

E-mail: [soyo@hkstar.com](mailto:soyo@hkstar.com)

*Technical Support:*

tel: 852-27109810

fax: 852-27109078

E-mail: [soyo@hkstar.com](mailto:soyo@hkstar.com)

### **SOYO China (Gin Mei Jei)**

---

Region Covered: All of China

---

*Sales:*

Tel: 86-10-62510089

fax: 86-10-62510388

E-mail: [soyo@public.bta.net.cn](mailto:soyo@public.bta.net.cn)

*Technical Support:*

Tel: 86-10-62510089

fax: 86-10-62510388

E-mail: [soyo@public.bta.net.cn](mailto:soyo@public.bta.net.cn)

### **SOYO Japan**

---

Region Covered: Japan

---

Web site: [www.soyo.co.jp](http://www.soyo.co.jp)

---

*Sales:*

Tel: 81-3-33682188

Fax: 81-3-33682199

E-mail: [soyo-jpn@soyo.co.jp](mailto:soyo-jpn@soyo.co.jp)

*Technical Support:*

Tel: 81-3-33682188

Fax: 81-3-33682199

E-mail: [support@soyo.co.jp](mailto:support@soyo.co.jp)





**Edition: December 1999**  
**Version 2.4**  
**SY-6BE+**  
**SERIAL**



## Free Manuals Download Website

<http://myh66.com>

<http://usermanuals.us>

<http://www.somanuals.com>

<http://www.4manuals.cc>

<http://www.manual-lib.com>

<http://www.404manual.com>

<http://www.luxmanual.com>

<http://aubethermostatmanual.com>

Golf course search by state

<http://golfingnear.com>

Email search by domain

<http://emailbydomain.com>

Auto manuals search

<http://auto.somanuals.com>

TV manuals search

<http://tv.somanuals.com>