



# **SY-K7ADA Motherboard**

## **Quick Start Guide**

Introduction

Hardware  
Installation

Quick BIOS  
Setup

The SOYO CI

## **SY-K7ADA Motherboard**

Socket 462 for AMD® Athlon/Duron™ processors  
ALI MAGiK1 AGP/PCI Motherboard  
200/266 MHz Front Side Bus supported  
ATX Form Factor

Copyright © 2001 by Soyo Computer Inc.

### **Trademarks:**

Soyo is the registered trademark of Soyo Computer Inc. All trademarks are the properties of their owners.

### **Product Rights:**

All names of the product and corporate mentioned in this publication are used for identification purposes only. The registered trademarks and copyrights belong to their respective companies.

### **Copyright Notice:**

All rights reserved. This manual has been copyrighted by Soyo Computer Inc. No part of this manual may be reproduced, transmitted, transcribed, translated into any other language, or stored in a retrieval system, in any form or by any means, such as by electronic, mechanical, magnetic, optical, chemical, manual or otherwise, without permission in writing from Soyo Computer Inc.

### **Disclaimer:**

Soyo Computer Inc. makes no representations or warranties regarding the contents of this manual. We reserve the right to amend the manual or revise the specifications of the product described in it from time to time without obligation to notify any person of such revision or amend. The information contained in this manual is provided to our customers for general use. Customers should be aware that the personal computer field is subject to many patents. All of our customers should ensure that their use of our products does not infringe upon any patents. It is the policy of Soyo Computer Inc. to respect the valid patent rights of third parties and not to infringe upon or to cause others to infringe upon such rights.

### **Restricted Rights Legend:**

Use, duplication, or disclosure by the Government is subject to restrictions set forth in subparagraph (c)(1)(ii) of the Rights in Technical Data and Computer Software clause at 252.277-7013.

### **About This Guide:**

This Quick Start Guide can help system manufacturers and end users in setting up and installing the Motherboard. Information in this guide has been carefully checked for reliability; however, to the correctness of the contents there is no guarantee given. The information in this document is subject to amend without notice.

For further information, please visit our **Web Site** on the Internet. The address is "<http://www.soyo.com.tw>".

### **K7ADA Serial - Version 1.2 - Edition: May 2001**

\* These specifications are subject to amend without notice

# 1 Introduction

Congratulations on your purchase of the **SY-K7ADA** Motherboard. This *Quick Start Guide* illustrates the steps for installing and setting up your new Motherboard.

This guide provide users with the basic steps of Motherboard setting and operation. For further information, please refer to the *SY-K7ADA User's Guide* that came with your Motherboard.

## Unpacking

When unpacking the Motherboard, check for the following items:

---

◆ The SY-K7ADA ALi MAGiK1 AGP/PCI Motherboard




---

◆ The Quick Start Guide




---

◆ The Installation CD-ROM




---

◆ SOYO Bonus Pack CD-ROM




---

◆ One IDE Device ATA33/ 66/100 Flat Cable




---

◆ One Floppy Disk Drive Flat Cable




---

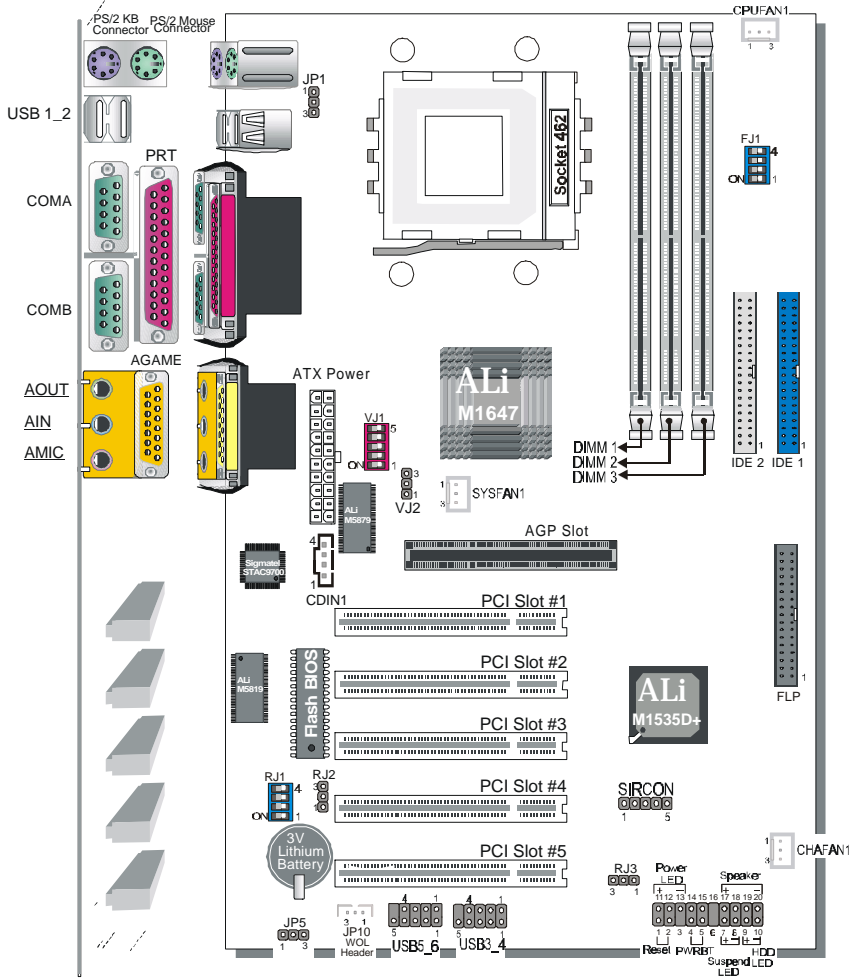
◆ One Heat Sink Compound

---



# SY-K7ADA Quick Start Guide

## SY-K7ADA Motherboard Layout



## Key Features

- Supports Socket A (Socket 462) AMD® processors
  - i ✕ Supports 200MHz Front Side Bus
    - Athlon(750MHz~1.3GHz)
    - Duron (600MHz~900MHz)
  - i ✕ Supports 266MHz Front Side Bus
    - Athlon(1GHz~1.33GHz)
- PC99, ACPI 1.0b
- Ultra DMA33/66/100 (ATA 33/66/100) EIDE
- Supports Wake-On-LAN (WOL)
- Power-on by RTC alarm
- Supports onboard hardware monitoring and includes Hardware Doctor™ utility
- Supports three PC2100/PC1600 DDR SDRAM DIMMs up to 3GB memory space
- Supports multiple-boot function
- 5 x 32-bit bus mastering PCI slots fully compliant with PCI Rev2.2
- 1 x 32-bit AGP 1X/2X/4X sideband function slot, supports AGP specification V2.0
- 6 x USB ports onboard compliant with open HCI 1.0a specification
- 1 x IrDA port supports IrDA 1.0(SIR), IrDA1.1 (FIR) & Sharp-IR
- ATX power connector
- Easy CPU settings in BIOS with the “SOYO COMBO setup”
- Supports Suspend to RAM and suspend to Disk
- Supports on-board AC97 Audio
- Supports CPU voltage adjustment by DIP switch
- Supports CPU Multiplier selection by DIP switch
- Supports CPU frequency adjustment by DIP switch

# 2 Installation



To avoid damage to your Motherboard, please follow these simple rules while handling this equipment:

- Before handling the Motherboard, ground yourself by touching an unpainted portion of the system's metal chassis.
- Remove the Motherboard from its anti-static packaging. Hold the motherboard by the edges and avoid touching its components.
- Check the Motherboard for damage. If any chip appears to be loose, press carefully to seat it firmly in its socket.

Follow the directions in this section which is designed to guide you through a quick and correct method to install your new **SY-K7ADA** Motherboard. For detailed information, please refer to the *SY-K7ADA Motherboard User's guide and Technical Reference* online manual in the CD-ROM package that came with your Motherboard.

Gather and prepare all necessary components to complete the installation successfully:

- ◆ AMD® Socket462 processor with built-in CPU cooling fan (boxed type)
- ◆ DDR RAM module(s)
- ◆ Computer case with adequate power supply unit
- ◆ Monitor
- ◆ PS/2 Keyboard
- ◆ Pointing Device (PS/2 Mouse)
- ◆ Speaker(s) (optional)
- ◆ Disk Drives: HDD, CD-ROM, Floppy drive...
- ◆ External Peripherals: Printer, Plotter, and Modem (optional)
- ◆ Internal Peripherals: Modem and LAN cards (optional)

**Note:** 1. If you want to use an external speaker connected to "Line-out" port, please make sure to use an "amplified speaker" that can generate proper output sound volume.

## Install the Motherboard

To perform the installation of your new **SY-K7ADA** Motherboard, follow the steps below:

### Step 1. CPU Installation

Mark your CPU Frequency: **Record the working frequency of your CPU that should be clearly marked on the CPU cover.**

#### 200MHz FSB Athlon CPU

<input type="checkbox"/> 750 MHz (100 x 7.5)	<input type="checkbox"/> 800 MHz (100 x 8.0)	<input type="checkbox"/> 850 MHz (100 x 8.5)	<input type="checkbox"/> 900 MHz (100 x 9.0)
<input type="checkbox"/> 950 MHz (100 x 9.5)	<input type="checkbox"/> 1000 MHz (100 x 10.0)	<input type="checkbox"/> 1.1GHz (100 x 11.0)	<input type="checkbox"/> 1.2 GHz (100 x 12.0)
<input type="checkbox"/> 1.3 GHz (100 x 13.0)			

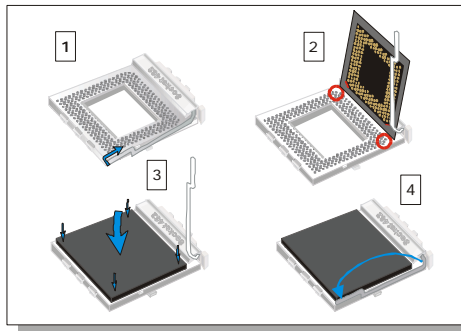
#### 200MHz FSB Duron CPU

<input type="checkbox"/> 600 MHz (100 x 6.0)	<input type="checkbox"/> 650 MHz (100 x 6.5)	<input type="checkbox"/> 700 MHz (100 x 7.0)	<input type="checkbox"/> 750 MHz (100 x 7.5)
<input type="checkbox"/> 800 MHz (100 x 8.0)	<input type="checkbox"/> 850 MHz (100 x 8.5)	<input type="checkbox"/> 900 MHz (100 x 9.0)	<input type="checkbox"/>

#### 266MHz FSB Athlon CPU

<input type="checkbox"/> 1 GHz (133 x 7.5)	<input type="checkbox"/> 1.13 GHz (133 x 8.5)	<input type="checkbox"/> 1.2 GHz (133 x 9.0)	<input type="checkbox"/> 1.33 GHz (133 x 10.0)
--	---	--	--

**CPU Mount Procedure:** To mount the AMD® & Athlon/Duron™ processor that you have purchased separately, follow these instructions.



1. Lift the socket handle up to a vertical position.
2. Align the blunt edge of the CPU with the matching pinhole edge on the socket.
3. Seat the processor in the socket completely and without forcing.
4. Then close the socket handle to secure the CPU in place.



Remember to connect the CPU Cooling Fan to the appropriate power connector on the Motherboard. *The fan is a key component that stabilizes the system. It prevents the equipment from overheating and prolongs the life of your CPU.*

## SY-K7ADA Quick Start Guide

### Step 2. Connections to the Motherboard

This section tells how to connect internal peripherals and the power supply to the Motherboard.

The internal peripherals consist of IDE devices (HDD, CD-ROM), Floppy Disk Drive, Chassis Fan, Front Panel Devices (Suspend LED Internal Speaker, Reset Button and IDE LED Switch.), Wake-On-LAN card, VGA card, Sound Card, and other devices.

For more details on connecting internal and external peripherals to your new SY-K7ADA Motherboard, please refer to *SY-K7ADA Motherboard User's Guide and Technical Reference* online manual on the CD-ROM.

### Connectors and Plug-ins

Standard IrDA (Infrared Device Header): SIRCON						Wake-On-LAN Header: JP10		
Pin1	Pin2	Pin3	Pin4	Pin5	Pin6	Pin1	Pin2	Pin3
+5V	FIR	IRRX	GND	IRTX	OVCROFF	5VSB	GND	PME #
USB3_4: USB3					USB3_4: USB4			
Pin1	Pin2	Pin3	Pin4	Pin6	Pin7	Pin8	Pin9	Pin10
+5V	Data(-)	Data(+)	GND	+5V	Data(-)	Data(+)	GND	GND
USB5_6: USB5					USB5_6: USB6			
Pin1	Pin2	Pin3	Pin4	Pin6	Pin7	Pin8	Pin9	Pin10
+5V	Data(-)	Data(+)	GND	+5V	Data(-)	Data(+)	GND	GND
CPU Cooling Fan: CPUFAN			Chassis Fan: CHAFAN			SYS Cooling Fan: SYSFAN		
Pin1	Pin2	Pin3	Pin1	Pin2	Pin3	Pin1	Pin2	Pin3
GND	+12V	SENSOR	PWM2	+12V	SENSOR	GND	+12V	NC
CD Line-in: CDIN1								
Connect the CD Line-in cord from the CD-ROM device to the matching header CDIN1					Pin 1	Pin 2	Pin 3	Pin 4
					CD_L	GND	GND	CD_R
					Power LED			
					Pin11	Pin12	Pin13	
					LED	NC	GND	
					Speaker			
					Pin17	Pin18	Pin19	Pin20
					Power	NC	NC	Speaker out
HDD LED		PWRBT		RESET		Suspend LED		
Pin9	Pin10	Pin4	Pin5	Pin1	Pin2	Pin7	Pin8	
Power	HDD LED	PWRBTN	GND	Power RST	GND	Power	SP_LED	
ATX POWER On/Off : PWRBT								
Connect your power switch to this header (momentary switch type).								
<b>To turn off the system, please press this switch and hold down for longer than 4 seconds.</b>								



**ATX Power Supply: ATX PW**

Attach the ATX Power cable to this connector. (This motherboard requires an ATX power supply, an AT power supply can NOT be used.)  
 When using the Power-On by PS/2 Keyboard function, please make sure the ATX power supply is able to provide at least 720mA on the 5V Standby lead (5VSB) in order to meet the standard ATX specifications.

### Step 3. Configure Memory

Supports PC2100/PC1600 DDR(Double Data Rate) SDRAM up to 3 DIMMs and using system memory up to 3GB. Supports symmetrical and asymmetrical DDR addressing.

#### Memory Configuration Table





Number of Memory Modules	DIMM 1	DIMM 2	DIMM 3
RAM Type	DDR SDRAM		
Memory Module Size	4/16/64/128/256/512 Mbit		

**Note:** This Motherboard can only support 2 pcs of PC2100 DDR module, we suggest using DIMM1 and DIMM2 for PC2100 DDR module.

### Step 4. Multiplier Adjustment Setting (RJ1)

For certain AMD™ CPUs, the multiplier is not locked such that setting a multiplier higher than specified on the CPU is possible. For technical details read the following:

Refer to the following table to set the Frequency Multiplier of your CPU.

Frequency Multiplier Setting	RJ2	RJ3
Auto	Short Pin1-2 	Short Pin1-2 
Manual	Short Pin2-3 	Short Pin2-3 

## SY-K7ADA Quick Start Guide



If you set ratio to manual and configure the RJ1 DIP switch to the settings that match your CPU speed, as follow table:

RJ1	1	2	3	4	RJ1	1	2	3	4
5	On	On	Off	On	9	On	On	Off	Off
5.5	Off	On	Off	On	9.5	Off	On	Off	Off
6	On	Off	Off	On	10	On	Off	Off	Off
6.5	Off	Off	Off	On	10.5	Off	Off	Off	Off
7	On	On	On	Off	11	On	On	On	On
7.5	Off	On	On	Off	11.5	Off	On	On	On
8	On	Off	On	Off	12	On	Off	On	On
8.5	Off	Off	On	Off	12.5	Off	Off	On	On

**Note:** SOYO does not guarantee system stability if the user over clocks the system. Any malfunctions due to over-clocking are not covered by the warranty.

### Step 5. Enable/Disable Power-On by Keyboard (JP1)

You may choose to enable the Power-On through Keyboard function by shorting pin 2-3 on jumper JP1; or short pin 1-2 to disable this function.

Power-On by Keyboard	Enable	Disable
<b>JP1 Setting</b>	Short pin 2-3 to enable the Power-On by Keyboard function. 	Short pin 1-2 and the Power-On by Keyboard function is disabled. 
<b>Important:</b> When using the Power-On by Keyboard function, please make sure the ATX power supply is able to provide at least 720mA on the 5V Standby lead (5VSB) in order to meet the standard ATX specification.		

### Step 6. The synchronous / asynchronous clock mode between CPU and memory interface setting

The FSB Frequency can also be set through DIP switch FJ1 or BIOS and it may therefore differ from the Frequency the CPU specifies. Doing so may however force your CPU to operate out of its specifications and therefore SOYO can not guarantee the proper functioning of your system.


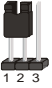
Refer to the following table:

FJ1- CPU frequency setting

CPU Freq(MHz)	SDRAM(MHz)	1	2	3	4
100	100	On	On	Off	Off
133	133	On	Off	Off	Off

**Step 7.** CPU Vcore adjustment (VJ1)

Refer to following table to set the voltage of your CPU. **If you set VJ2 status to AUTO, please set VJ1 switch status to Off (all).**

Status Setting	VJ2
Manual	Short Pin2-3 
Auto	Short Pin1-2 

If you set status to manual and configure VJ1 switch to the settings that match your CPU voltage as follow table:



VJ1	1	2	3	4	5	VJ1	1	2	3	4	5
<b>Auto</b>	<b>OFF</b>	<b>OFF</b>	<b>OFF</b>	<b>OFF</b>	<b>OFF</b>	<b>1.475</b>	OFF	OFF	OFF	OFF	ON
<b>1.100</b>	ON	OFF	OFF	OFF	OFF	<b>1.500</b>	ON	OFF	OFF	OFF	ON
<b>1.125</b>	OFF	ON	OFF	OFF	OFF	<b>1.525</b>	OFF	ON	OFF	OFF	ON
<b>1.150</b>	ON	ON	OFF	OFF	OFF	<b>1.550</b>	ON	ON	OFF	OFF	ON
<b>1.175</b>	OFF	OFF	ON	OFF	OFF	<b>1.575</b>	OFF	OFF	ON	OFF	ON
<b>1.200</b>	ON	OFF	ON	OFF	OFF	<b>1.600</b>	ON	OFF	ON	OFF	ON
<b>1.225</b>	OFF	ON	ON	OFF	OFF	<b>1.625</b>	OFF	ON	ON	OFF	ON
<b>1.250</b>	ON	ON	ON	OFF	OFF	<b>1.650</b>	ON	ON	ON	OFF	ON
<b>1.275</b>	OFF	OFF	OFF	ON	OFF	<b>1.675</b>	OFF	OFF	OFF	ON	ON
<b>1.300</b>	ON	OFF	OFF	ON	OFF	<b>1.700</b>	ON	OFF	OFF	ON	ON
<b>1.325</b>	OFF	ON	OFF	ON	OFF	<b>1.725</b>	OFF	ON	OFF	ON	ON
<b>1.350</b>	ON	ON	OFF	ON	OFF	<b>1.750</b>	ON	ON	OFF	ON	ON
<b>1.375</b>	OFF	OFF	ON	ON	OFF	<b>1.775</b>	OFF	OFF	ON	ON	ON
<b>1.400</b>	ON	OFF	ON	ON	OFF	<b>1.800</b>	ON	OFF	ON	ON	ON
<b>1.425</b>	OFF	ON	ON	ON	OFF	<b>1.825</b>	OFF	ON	ON	ON	ON
<b>1.450</b>	ON	ON	ON	ON	OFF	<b>1.850</b>	ON	ON	ON	ON	ON

## SY-K7ADA Quick Start Guide

### CMOS Clear (JP5)

In some cases the CMOS memory may contain wrong data, follow the steps below to clear the CMOS memory.

1. Clear the CMOS memory by momentarily shorting pin 2-3 on jumper JP5. This jumper can be easily identified by its white colored cap.
2. Then put the jumper back to 1-2 to allow writing of new data into the CMOS memory.

CMOS Clearing	Clear CMOS Data	Retain CMOS Data
JP5 Setting	Short pin 2-3 for at least 5 seconds to clear the CMOS 	Short pin 1-2 to retain new settings 
<i>Note: You must unplug the ATX power cable from the ATX power connector when performing the CMOS Clear operation.</i>		

## 3 Quick BIOS Setup

This Motherboard does not use any hardware jumpers to set the CPU frequency. Instead, CPU settings are software configurable with the BIOS **[SOYO COMBO SETUP]**. The **[SOYO COMBO SETUP]** combines the main parameters that you need to configure, all in one menu, for a quick setup in BIOS.

After the hardware installation is complete, turn the power switch on, then press the **<DEL>** key during the system diagnostic checks to enter the Award BIOS Setup program. The CMOS SETUP UTILITY will be shown on the screen. Then, follow these steps to configure the CPU settings.

**Step 1.** Select **[STANDARD CMOS SETUP]**

Set **[Date/Time]** and **[Floppy drive type]**, then set **[Hard Disk Type]** to "Auto".

**Step 2.** Select **[LOAD SETUP DEFAULT]**

Select the "LOAD SETUP DEFAULT" menu and type "Y" at the prompt to load the BIOS optimal setup.

**Step 3.** Select **[SAVE & EXIT SETUP]**

Press **<Enter>** to save the new configuration to the CMOS memory, and continue the boot sequence.

## 4 The SOYO CD

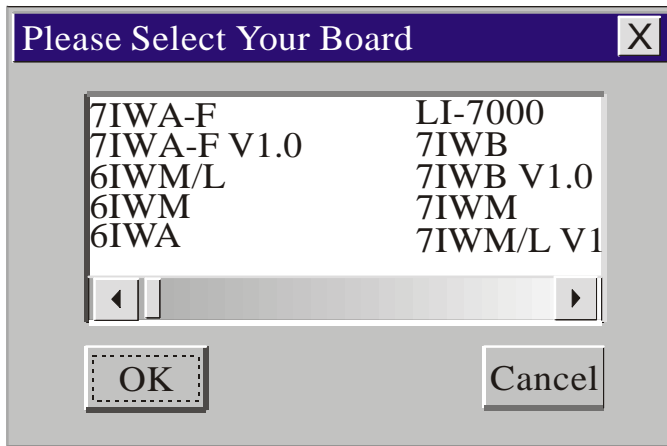


**The SOYO-CD will NOT autorun if you use it on an Operating System other than Windows 9x or NT.**

Your SY-K7ADA Motherboard comes with a CD-ROM labeled "SOYO CD." The SOYO CD contains (1) the user's manual file for your new Motherboard, (2) the drivers/software available for installation, and (3) a database in HTML format with information on SOYO Motherboards and other products.

**Step 1.** Insert the SOYO CD into the CD-ROM drive

If you use Windows NT, the SOYO-CD will not detect your motherboard type. In that case the following dialog will pop up, please choose your motherboard and press OK. Now the SOYO-CD Start Up Menu will be shown.



**(SOYO CD Start Up Program Menu)**

If you use Windows 95 or 98, the SOYO CD Start Up Program automatically detects which SOYO Motherboard you own and displays the corresponding model name.



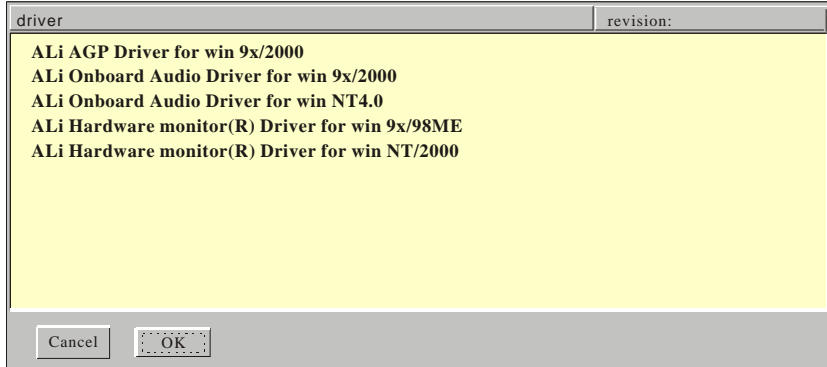
The user's manual files included on the SOYO CD are in PDF (Postscript Document) format. In order to read a PDF file, the appropriate Acrobat Reader software must be installed in your system.

**Note:** The Start Up program automatically detects if the Acrobat Reader utility is already present in your system, and otherwise prompts you on whether or not you want to install it. You must install the Acrobat Reader utility to be able to read the user's manual file. Follow the instructions on your screen during installation, then once the installation is completed, restart your system and re-run the SOYO CD.

### **Step 2.** Install Drivers and Utilities

Click the **Install Drivers** button to display the list of drivers/ software that can be installed with your Motherboard. The Start Up program displays the drivers available for the particular model of Motherboard you own. We recommend that you only install those drivers.

## SY-K7ADA Quick Start Guide



### (Driver Installation Menu)

#### A short description of all available drivers follows:

##### ➤ **ALi AGP driver for Win 9x/2000**

The ALi AGP driver package includes below drivers your motherboard needs. After selecting this driver package, one driver will be installed automatically. A description of the 2 drivers follows:

##### — **ALi IDE driver**

This driver will speed up the data-transfer rate to and from the harddisk.

##### — **ALi AGP Driver**

This driver must be installed in order to be able to make use of the AGP Video functionality.

##### ➤ **ALi Onboard Audio Driver for win 9x/2000**

You have to install the drivers before installing any application for the Onboard Audio.

##### ➤ **ALi Onboard Audio Driver for win NT4.0**

You have to install the drivers before installing any application for the Onboard Audio.

##### ➤ **ALi hardware monitor(R) for win 9x/98ME**

Your motherboard comes with a hardware monitoring IC. By installing this utility Temperature, Fan speed and Voltages can be monitored. It is also possible to set alarms when current system values exceed or fall below pre-set values.

##### ➤ **ALi hardware monitor(R) for win NT/2000**

Your motherboard comes with a hardware monitoring IC. By installing this utility Temperature, Fan speed and Voltages can be monitored. It is also possible to set alarms when current system values exceed or fall below pre-set values.



Select which driver you want to install and click **OK**, or click **Cancel** to abort the driver installation and return to the main menu.

**Note:** Once you have selected a driver, the system will automatically exit the SOYO CD to begin the driver installation program. When the installation is complete, most drivers require to restart your system before they can become active.

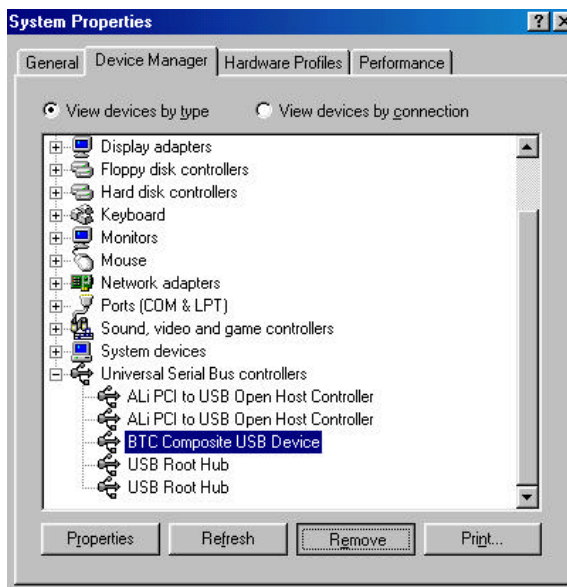
### Step 3.

1. For supporting S3 mode wake up function in WINDOWS 98se, please download the driver from SOYO web site ([www.soyo.com.tw](http://www.soyo.com.tw)).

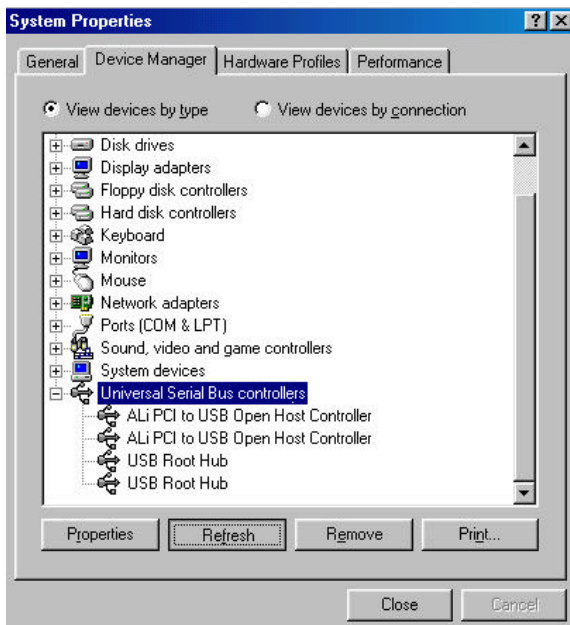
Please put this downloaded driver in `c:\windows\system32\driver` and remove USB device in "Device Manager" then refresh.



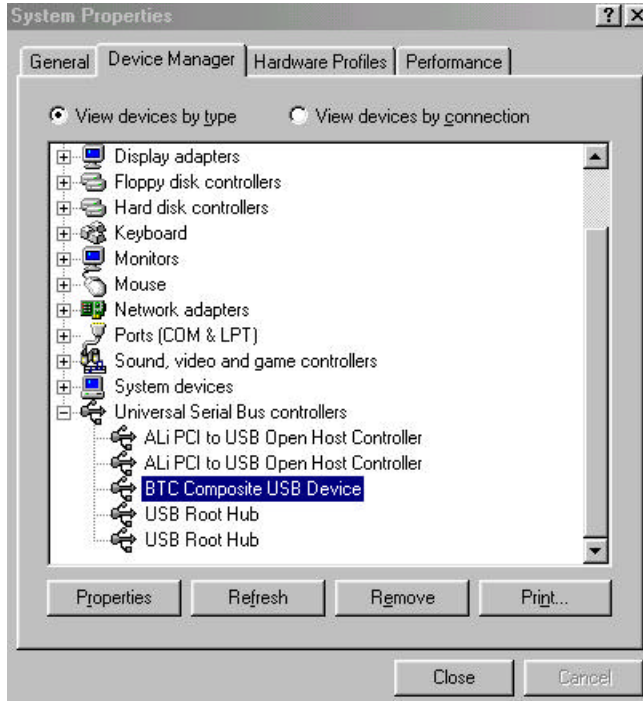
Please put this downloaded driver in `c:\windows\system32\driver`



### Remove USB device(ex : USB keyboard, mouse, ...,etc.)



**Refresh**



### Final

- 2.If customer uses the WINDOWS 95 OSR2, please use the NT version driver when installing audio driver.
- 3.Right now, ALI chipset does not support ATI RAGE 128 graphics chip, so K7ADA can not support this kind of VGA card.

### Step 4. Check the Latest Releases

Click the 'Check the latest Releases' button to go the SOYO Website to automatically find the latest BIOS, manual and driver releases for your motherboard. This button will only work if your computer is connected to the internet through a network or modem connection. Make sure to get your modem connection up before clicking this button.

(\* Internet Explorer is a Microsoft Trademark)

### Quick Trouble shoot tips

#### Video (no display) related issues

**I built a new computer system using a Soyo board and nothing happens when turning it on, no video and no beeps from the PC speaker. What is happening and how can it be fixed?**

No screen and no beeps mean that your CPU and motherboard do not work at all. It could be that the CPU is not seated correctly or that a component on the M/B is grounded (shorted) with the case. Also make sure to check the voltage setting switch (110V/220V) on the back of the power supply. To isolate the problem do the following:

1. Press and hold down on the “Ins” (insert) key while turning on the computer until you get video. If you do not get video then,
2. Double-check jumpers setting on you motherboard and remove all add-on cards, unplug all hard-disk and floppy-disk drive cables and see if you can hear some beeps. If you still do not get any beeps, then try putting the motherboard on the table (to isolate it from the case) with the CPU and speaker only, and give it one more try.

**I hear a series of beeps and I do not get anything from my monitor. What could be wrong?**

The following lists some basic beep codes and their possible meanings:

- One long beep and 3 very short beeps - The video card is not detected by the motherboard. Please re-seat your video card. If you are using an AGP card, please push your AGP card down real hard. You may have to push VERY hard without the AGP card mounting screw. Make sure not to insert the card the other way around.
- Continuous beeps – One or more of the memory modules is not seated correctly in its socket.

**My PCI VGA card works fine with my system, but when I put in a new AGP card, it does not give me any video. Is my AGP slot bad?**

This is a common problem with AGP video cards. The reason is that your AGP card did not get seated into the AGP slot fully and firmly. Please push your AGP card down into the socket real hard, it should snap twice. You may have to unscrew the AGP card to allow the card to go further down. Do take care not to damage the card by using too much force.

### **I get distorted video my AGP card right after I save my bios. Why is that?**

The cause is likely that your AGP card is not running at the correct bus speed. To fix this, please clear the CMOS via JP5 and if it still does not work, please upgrade your motherboard bios to the latest version.

## **BIOS Issues**

### **Where can I find the BIOS revision of my mainboard?**

It will be displayed on the up-left corner on the screen during boot-up. It will show as your board type followed by the revision number, such as 5EH\_2CA1 (meaning revision 2CA1 for the SY-5EH board) or 6BA+ IV\_2AA2 which means SY-6BA+ IV motherboard with 2AA2 bios.

### **Where can I find the latest BIOS of my motherboard?**

Please go to the technical support page of one of the SOYO websites (Taiwan: [www.soyo.com.tw](http://www.soyo.com.tw)), and look up your motherboard to find the latest BIOS revision.

## **Hard disk, floppy drive, CD-ROM etc**

### **When I boot up my new computer I got "floppy boot failure" and the LED on the floppy stays on**

Make sure the red wire of floppy ribbon cable goes to Pin1 on the floppy drive side (don't trust the "key lock" or "notch") and use the end-connector of the cable (don't use middle one).

## **Modem issues**

### **I get an "I/O Conflict" message when I turn on my system and I can not get my modem to work**

What you need to do is to disable 'COM2' (or UART2 or serial port 2) in the bios under integrated peripheral setup.

### **I have installed my modem drivers several times and I still cannot get my modem to work. Why?**

If you are sure that the modem driver has been installed correctly, then you need to install the via 4 in 1 driver from the SOYO CD, this is because Windows does not properly recognize relatively new chipsets.

### **I can not get my board to run properly.**

Please make sure you have the latest bios and driver from the SOYO web site at: <http://www.soyo.com>

## SY-K7ADA Quick Start Guide

---

### How to contact us:

- If you are interested in our products, please contact the SOYO sales department in the region you live.
- If you require Technical Assistance, please contact our Technical Support in the region you live.

SOYO prefers Email as communication medium, remember to *always add to the email the country that you live in.*

### TAIWAN

SOYO COMPUTER INC.

---

No. 21 Wu-Kung 5 Rd., Hsin Chuang  
City, Taipei Hsien, Taiwan, R.O.C

---

TEL: 886-2-22903300

FAX: 886-2-22983322

<http://www.soyo.com/>

Email: [info@mail.soyo.com](mailto:info@mail.soyo.com)

### JAPAN

SOYO COMPUTER

---

SOYO BLDG, 1-23-14, Hyakunincho,  
Shinjyuku-ku, Tokyo Japan 169-0073

---

TEL: 81-3-3368-2188

FAX: 81-3-3368-2199

<http://www.soyo.co.jp/>

Email: [support@soyo.co.jp](mailto:support@soyo.co.jp)

### USA

SOYO INC.

---

41484 Christy Street, Fremont, CA  
94538, USA

---

TEL: 1-510-226-7696

FAX: 1-510-226-9218

<http://www.soyousa.com/>

Email : [sales@soyousa.com](mailto:sales@soyousa.com)

### CHINA

GING MEI JEI LTD

---

Room 304, Phoenix Mansion, No. 165  
Haidian Road, Haidian District, Beijing  
100080, China

---

TEL: 86-10-6251-0089

FAX: 86-10-6251-0311

<http://www.soyo.com.cn/>

Email: [soyo@public.bat.net.cn](mailto:soyo@public.bat.net.cn)

### GM

SOYO Deutschland GmbH  
(SAAT Technology GmbH)

---

August-Wilhelm-Kuhnholz-Str. 15  
D-26135 Oldenburg (Oldb), Germany

---

TEL: 49-441-209-100

FAX: 49-441-203-442

<http://www.soyo.de/>

Email: [sales@soyo.de](mailto:sales@soyo.de)

### KOREA

SOYO TECHNOLOGY CO., LTD.

---

3 rd, F1, Wonhyo Bldg, 46-1,  
Wonhyoro 3 Ga, yongsan Ku, Seoul  
Korea

---

TEL: 882-716-2850

FAX: 882-704-2619

<http://www.soyo.co.kr/>

Email: [soyo@soyo.co.kr](mailto:soyo@soyo.co.kr)

**Hong Kong**

Soyo (H.K.) Ltd.

---

5C, Big Star Centre, 8 Wang Kwong  
Road, Kowloon Bay, Kowloon, HK

---

TEL: 852-2710-9810

FAX: 852-2710-9078

<http://www.soyo.com.hk/>

Email: [soyo@hkstar.com](mailto:soyo@hkstar.com)

**Edition: May 2001**  
**Version 1.2**  
**SY- K7ADA**  
**SERIAL**





## Free Manuals Download Website

<http://myh66.com>

<http://usermanuals.us>

<http://www.somanuals.com>

<http://www.4manuals.cc>

<http://www.manual-lib.com>

<http://www.404manual.com>

<http://www.luxmanual.com>

<http://aubethermostatmanual.com>

Golf course search by state

<http://golfingnear.com>

Email search by domain

<http://emailbydomain.com>

Auto manuals search

<http://auto.somanuals.com>

TV manuals search

<http://tv.somanuals.com>