



Quick Start Guide

Owner's Record

The model number is located on the rear of the unit and the serial number is located in the battery compartment. Record the serial number in the space provided below. Refer to them whenever you call upon your Sony dealer regarding this product.

Model number : RM-AX5000

Serial number : _____

<http://esupport.sony.com/US/RMAX5000/>

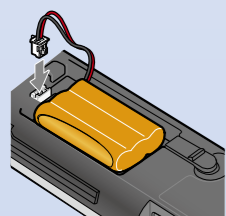
© 2008 Sony Corporation Printed in Malaysia

<http://www.sony.net/>

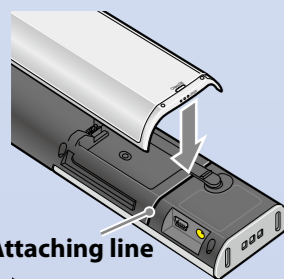
Contents

- Remote Commander "RM-AX5000"
- Rear Cover
- Battery Charging Stand "BCA-RMAX5K"
- Ni-MH Rechargeable Battery Pack
- AC Power Adaptor
- USB Cable
- CD-ROM
- Quick Start Guide
- Warranty Card

Installing the battery



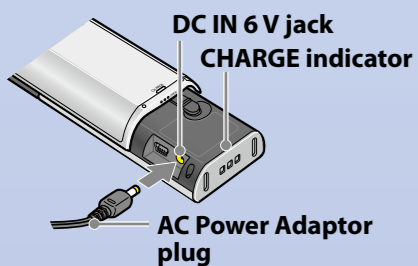
Insert the connector with the Ni-MH Rechargeable Battery Pack into the Remote Commander. Be sure to match the direction of the connector.



Attach and slide the Rear Cover. Be sure to match the direction of the Rear Cover. Align the bottom of the Rear Cover to the Attaching line.

Attaching line

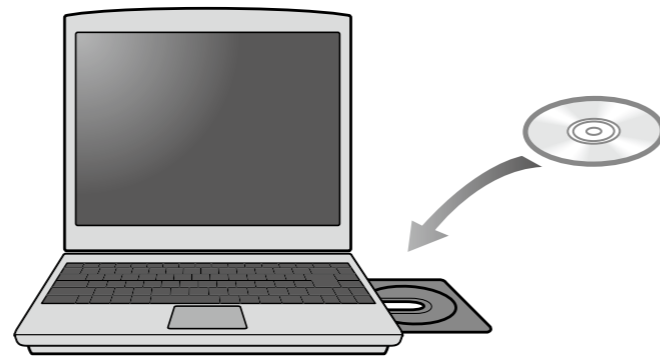
Charging the battery



Connect the AC Power Adaptor plug directly to the DC IN 6V jack on the Remote Commander. Then connect the AC Power Adaptor to a wall outlet. Charging starts when the CHARGE indicator in the top of the display is lit.

Charging is completed when the CHARGE indicator turns off. Disconnect the AC Power adaptor. Then slide to close the Rear Cover.

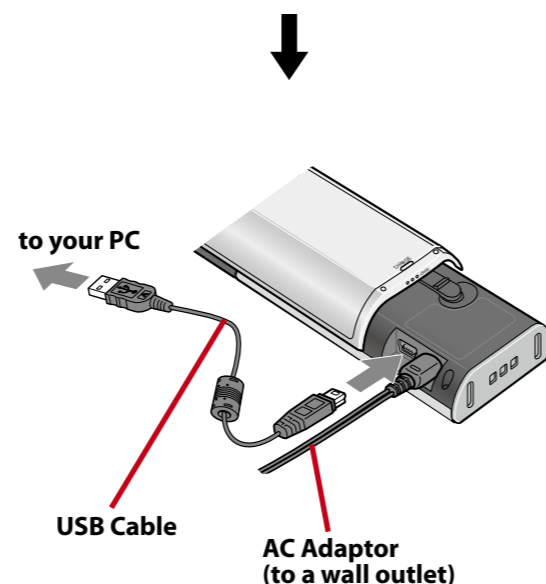
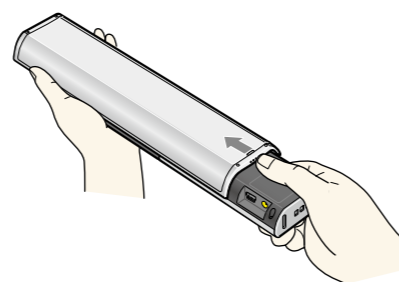
1 Install "RM-AX5000 Custom Setup Tool" to your Windows PC.



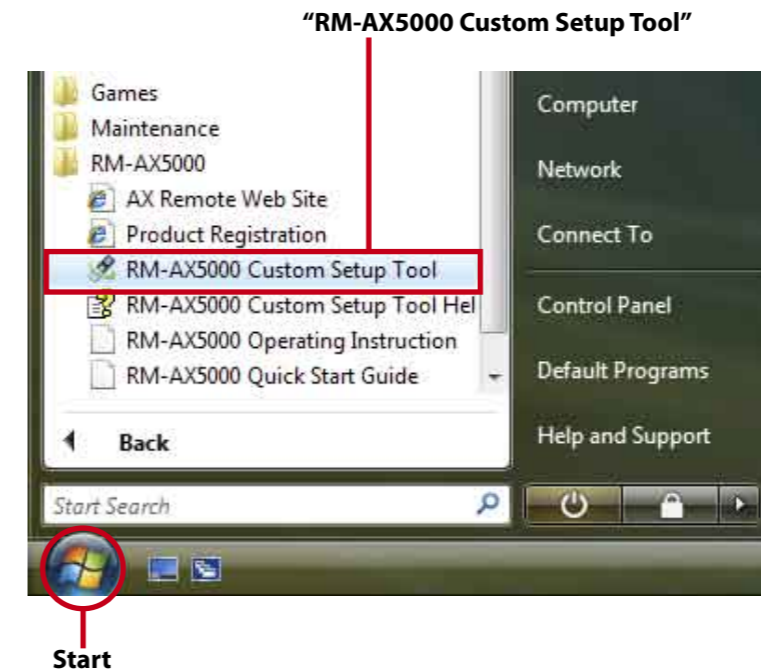
Complete the installation by following the on-screen instructions.



2 Connect the Remote Commander to your PC.

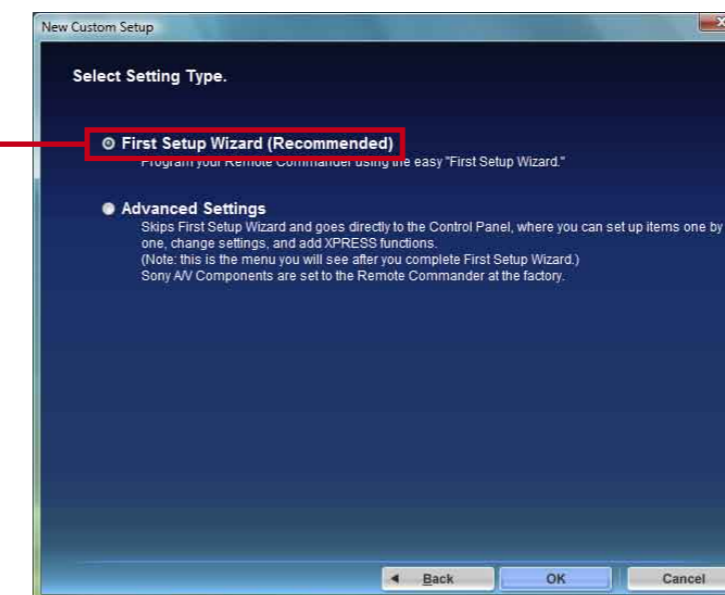


3 Start "RM-AX5000 Custom Setup Tool" and register a Component."

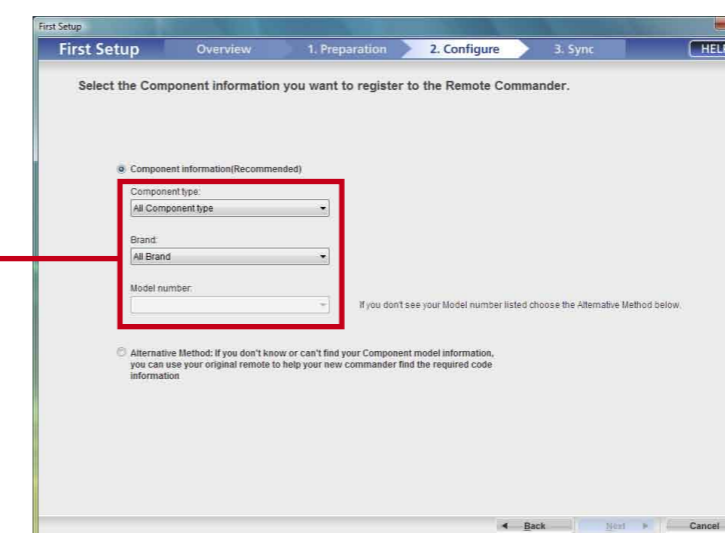


Set up your Component by following the simple on-screen instructions. Below are the main steps you will go through to set up your Remote Commander.

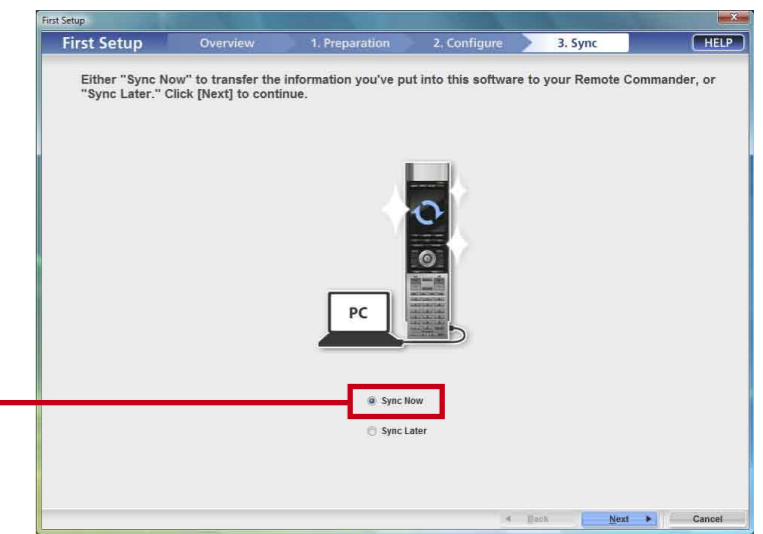
Select "First Setup Wizard."



Specify the Model number in the "Configure" window.



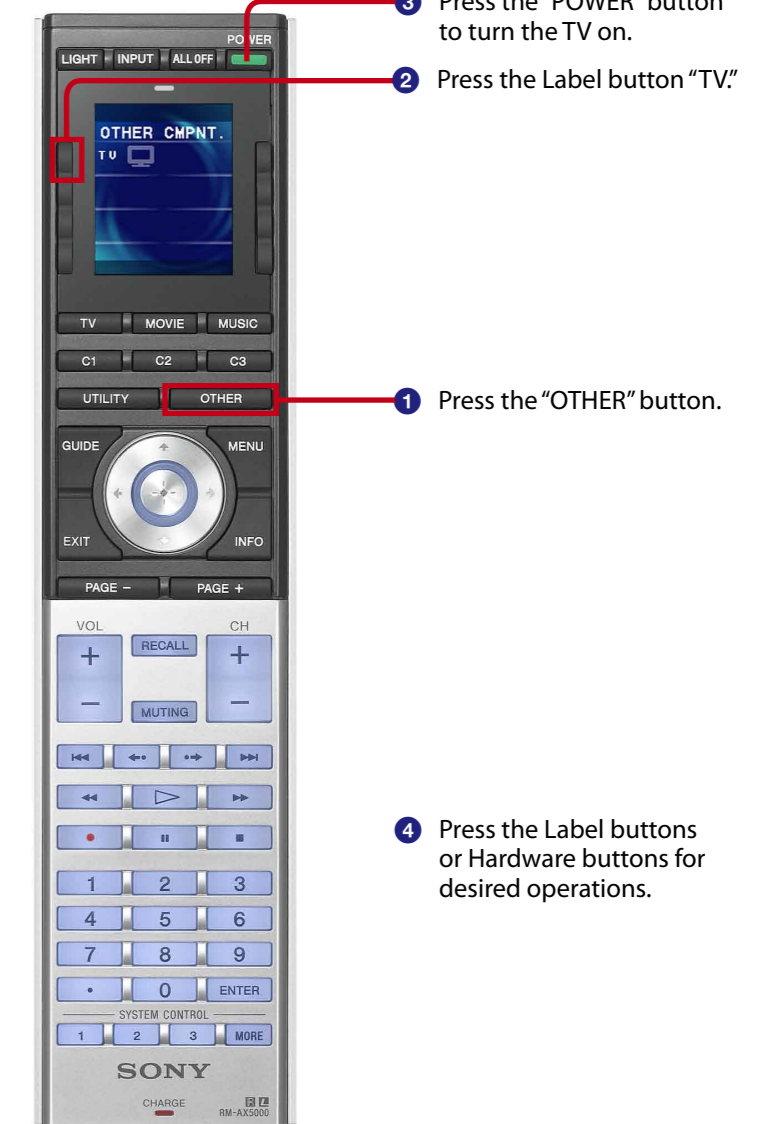
Sync the Remote Commander with this Wizard setting.



4 Disconnect the Remote Commander.

5 Let's try using the Remote Commander!

(e.g.) To operate a TV which has just been set up.



Convenient Features

The RM-AX5000 is a full-featured Universal Remote Commander that easily consolidates all of your remote controls into one, providing full control of up to 18 different Components, including audio, video, and home theater. The following are its main features.

Control up to 18 Components

With the Remote Commander, you can control up to 18 Components, including your TV, DVD Player, Cable Set Top Box, Satellite Receiver, DVR, VCR, CD Player, Receiver, etc.

Centralized control of Sony A/V Components with one Remote Commander

The Remote Commander is preset at the factory to operate Sony brand Components, so you can use it out of the box as a control center for your Sony A/V Components.

Remote control signals for non-Sony Components are also included

The Remote Commander also recognizes the Preset codes for most major brand Components, not only Sony. Just select the corresponding codes to control all of your A/V Components.

XPRESS functions for executing macros to operate several A/V Components by just one button

Groups of commands from different Components can be set for up to 12 XPRESS functions. For example, when you watch a movie on a DVD player using a TV and Receiver/Amplifier, you can turn on all Components by the press of a single button, even selecting the necessary inputs at the same time, automatically. Available buttons for the XPRESS functions appear on the display.

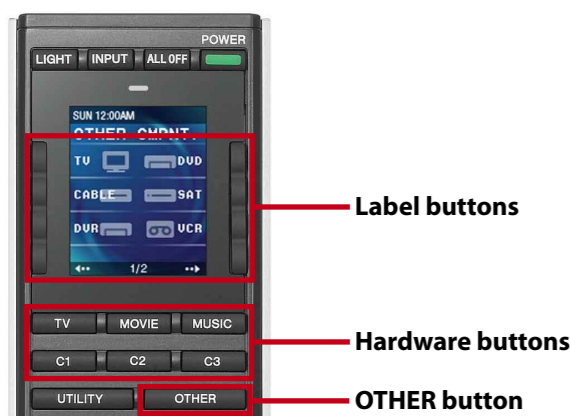
Also, XPRESS functions can memorize the power on/off and input status of each Component, and send a corresponding signal all with a single button press.

Clock display and Timer function

Learning function lets you program other remote control signals you may need

System Control function executes a macro by pressing one button

Selecting a desired Component



There are two different ways to select a component.

To select with the Label button

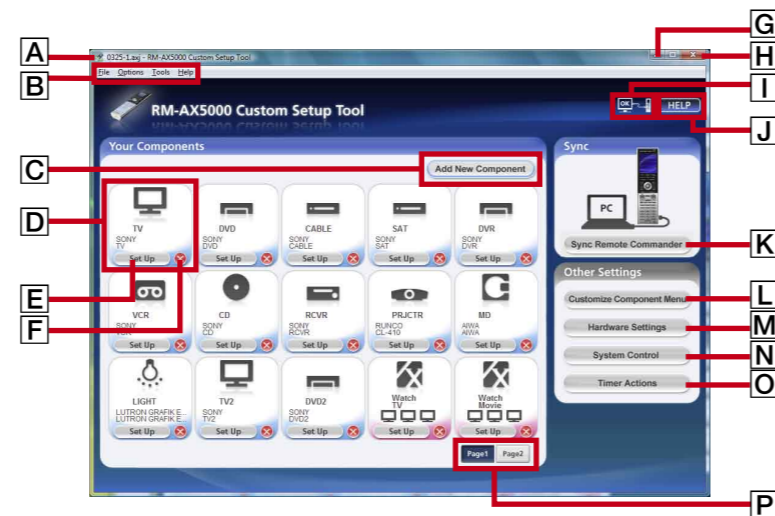
Press the [OTHER] button to display the registered Components, then press the desired Label button.

To select with the Hardware button

Press one of the desired Hardware button directories.

Control Panel reference

The Control Panel shows the following items.



A Title bar

Displays the current Custom Setup name as "(Custom Setup name) RM-AX5000 Custom Setup Tool."

B Menu bar

Displays the RM-AX5000 Custom Setup Tool menu.

C [Add New Component] button

Opens the dialog box for adding new Components.

D Component/XPRESS function image area

Displays the information connected to the Component or XPRESS function registered to the Custom Setup Tool.

E [Set Up] button

Jumps to the display that is to customize the Component or XPRESS function of the selected area.

F (Delete) button

Deletes the Component or XPRESS function in the selected area.

G (Minimize) button

Minimizes the RM-AX5000 Custom Setup Tool window and shows an icon on the Windows taskbar.

H (Close) button

Exits RM-AX5000 Custom Setup Tool.

I Connection status

Displays the connection status between your PC and the Remote Commander.

J [HELP] button

Displays the HELP window.

K [Sync Remote Commander] button

Transfers the Custom Setup you made in the RM-AX5000 Custom Setup Tool to the Remote Commander.

L [Customize Component Menu] button

Jumps to "Customize Component Menu" window. Then you can customize the display of the Component Menu.

M [Hardware Settings] button

Jumps to "Hardware Settings" window. Then you can customize the settings of the Remote Commander.

N [System Control] button

Jumps to "System Control Settings" window. Select a button on the Remote Commander of the setting display so as to set the Action with the Set Up Actions button.

O [Timer Actions] button

Jumps to "Timer Action Settings" window. Then you can program the Remote Commander to automatically perform a customized series of actions at a designated time.

P [Page1/Page2] button

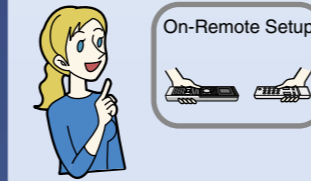
Switches the display between Page 1 and Page 2 when the total number of the Component and XPRESS functions in Page 1 is more than 15.

On-PC Setup and On-Remote Setup

There are two ways to make setups for the Remote Commander: "On-PC Setup" with PC software and "On-Remote Setup" directly on the Remote Commander.



On-PC Setup



On-Remote Setup

On-PC Setup (Recommended)

"On-PC Setup" uses the supplied software "RM-AX5000 Custom Setup Tool" to set up the Remote Commander. It allows you to easily make all the necessary setups for the Remote Commander (Component Preset codes, etc.). Furthermore, you can add and customize a range of setups which are not available with On-Remote Setup.

On-Remote Setup

"On-Remote Setup" is a way of setting up directly on the Remote Commander. You can use it immediately after presetting your Component. However, some advanced setups are not available with On-Remote setup (see the Operating Instructions).

Programmable items of On-PC Setup and On-Remote Setup

Setup items	On-PC Setup	On-Remote Setup
Setting the Preset codes	Editable	Editable
Learning the remote control signals	Editable	Editable
Customizing the Label of the display	Editable	Non-editable
Customizing the Wallpaper of the display	Editable	Non-editable
Customizing the Button Illumination color	Editable	Non-editable
Switching the Timer ON or OFF	Editable	Editable
Programming the Timer	Editable	Non-editable
Programming the macro	Editable	Non-editable
Hardware Settings	Editable	Editable

Hint

Components or learned data done on On-Remote Setup can be imported to your PC. However, the data setup with On-PC Setup cannot be changed with On-Remote Setup.

On-Remote Setup

For details, refer to the Operating Instructions (PDF file).

Macro Setups

A "Macro" is a series of multiple commands or actions that are performed in order. By programming macros into the Remote Commander, you can operate your Components easily through one-button control. There are two primary types of macros for the Remote Commander: XPRESS functions for specific A/V playback and System Control functions for total home theater and A/V control.

XPRESS function

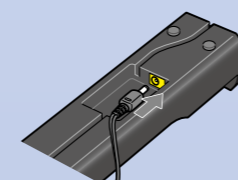
An XPRESS function is an executed series of consecutive actions that can operate several A/V Components by pressing just one button. Also, the XPRESS function can memorize the status of power on/off, input select of each Component, and it sends a signal corresponding to their status, therefore, all you have to do is simply press your XPRESS button once.

System Control

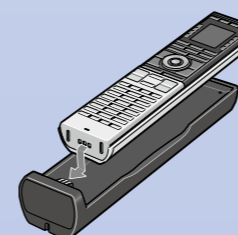
A System Control function is an executed series of actions that operate several A/V Components by pressing just one button.

For details, refer to the Help file of "RM-AX5000 Custom Setup Tool."

Using a Battery Charging Stand



Connect the AC Power Adaptor plug to the DC IN 6V jack on the rear of the Battery Charging Stand.



After matching the Remote Commander terminal and the Battery Charging Stand terminal, place the Remote Commander on the Battery Charging Stand.

WARNING

To reduce the risk of fire or electric shock, do not expose this apparatus to rain or moisture. To reduce the risk of electrical shock, do not open the cabinet. Refer servicing to qualified personnel only.

You are cautioned that any changes or modifications not expressly approved in this manual could void your authority to operate this equipment.

INFORMATION

This equipment has been tested and found to comply with the limits for a Class B digital device, pursuant to Part 15 of the FCC Rules. These limits are designed to provide reasonable protection against harmful interference in a residential installation. This equipment generates, uses, and can radiate radio frequency energy and, if not installed and used in accordance with the instructions, may cause harmful interference to radio communications. However, there is no guarantee that interference will not occur in a particular installation. If this equipment does cause harmful interference to radio or television reception, which can be determined by turning the equipment off and on, the user is encouraged to try to correct the interference by one or more of the following measures:

- Reorient or relocate the receiving antenna.
- Increase the separation between the equipment and receiver.
- Connect the equipment to an outlet on a circuit different from that to which the receiver is connected.
- Consult the dealer or an experienced radio/TV technician for help.

If you have any questions about this product, you may call; Sony Electronics Support 1-866-922-7669 or <http://esupport.sony.com/US/RMAX5000/>

Declaration of Conformity

Trade Name: SONY
Model number: RM-AX5000
Responsible Party: Sony Electronics Inc.
Address: 16530 Via Esprillo, San Diego, CA 92127 USA
Telephone number: 858-942-2230

This device complies with Part 15 of the FCC Rules. Operation is subject to the following two conditions: (1) This device may not cause harmful interference, and (2) this device must accept any interference received, including interference that may cause undesired operation.

RECYCLING NICKEL METAL HYDRIDE BATTERIES

Nickel Metal Hydride batteries are recyclable. You can help preserve our environment by returning your used rechargeable batteries to the collection and recycling location nearest you.



For more information regarding recycling of rechargeable batteries, call toll free 1-800-822-8837, or visit <http://www.rbc.org/>

Caution:

Do not handle damaged or leaking Nickel Metal Hydride batteries.

Notice for users

On the supplied software

- Copyright laws prohibit reproducing the software or the manual accompanying it in whole or in part, or renting the software without the permission of the copyright holder.
- In no event will SONY be liable for any financial damage, or loss of profits, including claims made by third parties, arising out of the use of the software supplied with this unit.
- In the event a problem occurs with this software as a result of defective manufacturing, SONY will replace it. However, SONY bears no other responsibility.
- The software provided with this unit cannot be used with equipment other than that which is so designated.
- Please note that, due to continued efforts to improve quality, the software specifications may be changed without notice.
- Operation of this unit with software other than that provided is not covered by the warranty.

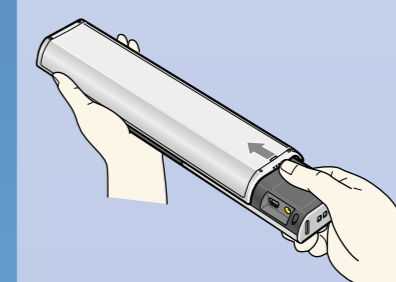
On copyrights

- Microsoft, Windows and Windows Vista are trademarks or registered trademarks of Microsoft Corporation in the United States and/or other countries.
- All other trademarks and registered trademarks are trademarks or registered trademarks of their respective holders. In this manual, "™" and "®" marks are not specified.

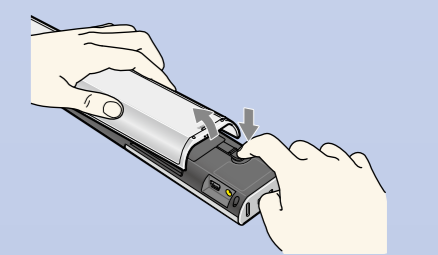
Program © 2008 Sony Corporation
Documentation © 2008 Sony Corporation

Disposing of the battery

For environmental conservation, be sure to remove the rechargeable battery from the unit before you dispose of the product, and dispose of the battery appropriately. Detach the Rear Cover according to the following procedure, then remove the battery.



Slide and open the Rear Cover until it stops.



Remove the rear cover while pressing the tab, then remove the connector.

Free Manuals Download Website

<http://myh66.com>

<http://usermanuals.us>

<http://www.somanuals.com>

<http://www.4manuals.cc>

<http://www.manual-lib.com>

<http://www.404manual.com>

<http://www.luxmanual.com>

<http://aubethermostatmanual.com>

Golf course search by state

<http://golfingnear.com>

Email search by domain

<http://emailbydomain.com>

Auto manuals search

<http://auto.somanuals.com>

TV manuals search

<http://tv.somanuals.com>