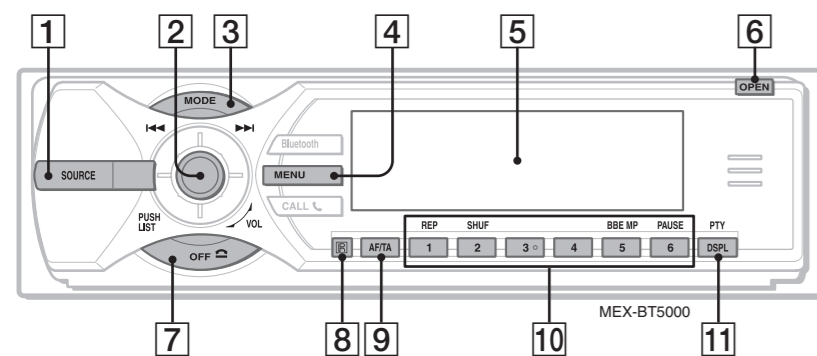


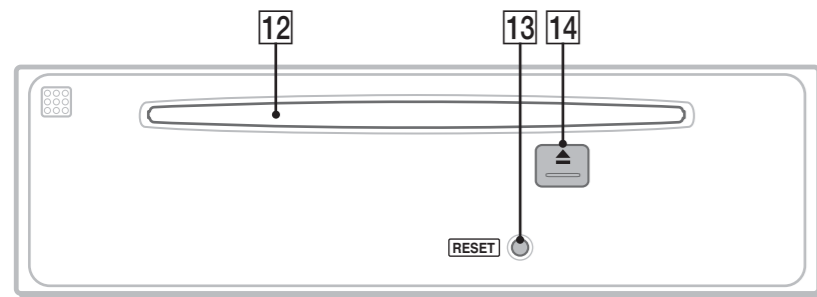
Location of controls and basic operations

Audio function

Main unit

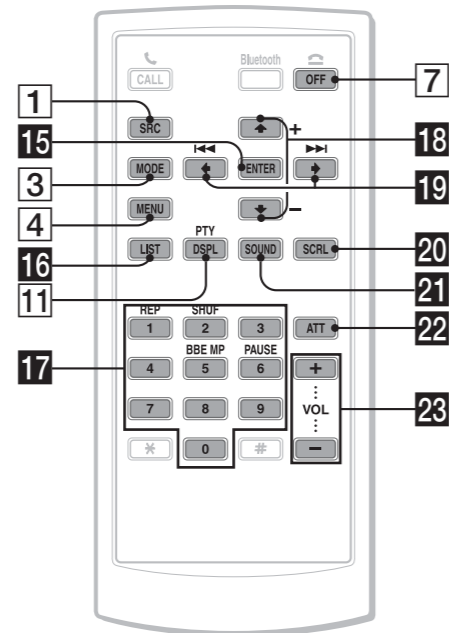


Front panel removed



Warning if your car's ignition has no ACC position
After turning the ignition off, be sure to press and hold **OFF** on the unit until the display disappears. Otherwise, the display does not turn off and this causes battery drain.

Card remote commander RM-X302



- 1 SOURCE button**
To power on; change the source (Radio/CD/ MD*¹/Bluetooth AUDIO/AUX).
- 2 Joystick/LIST button**
Rotate to: Adjust the volume.
Push up/down/left/right to: Select a menu item.
Press to: Apply a setting.
CD/MD*¹:
Push up/down to*²:
- Skip groups*³/albums*⁴ (push).
- Skip groups*³/albums*⁴ continuously (push and hold).
Push left/right to:
- Skip tracks (push).
- Skip tracks continuously (push, then push again within about 2 seconds and hold).
- Reverse/fast-forward a track (push and hold).
- 3 MODE button**
To select the radio band (FM/MW/LW)/select the unit*⁵.
- 4 MENU button**
To enter menu.
- 5 Display window**
- 6 OPEN button**
To power off; stop the source.
- 7 OFF button**
To power off; stop the source.
- 8 Receptor for the card remote commander**
- 9 AF/TA button**
AF (Alternative Frequencies)/TA (Traffic Announcement), TP (Traffic Programme): Each time you press **(AF/TA)**, the item changes as follows:
AF on → TA on → AF/TA on → AF/TA off
- 10 Number buttons**
CD/MD*¹:
①: REP
②: SHUF
⑤: BBE MP*⁶
To activate the BBE MP function, set "BBE MP on." To cancel, set "BBE MP off."
⑥: PAUSE*⁶
To pause playback. To cancel, press again.
Radio:
To receive stored stations (press); store stations (press and hold).

- Radio:**
Push up/down to:
- Receive stored station.
Push left/right to:
- Tune in stations automatically (push).
- Find a station manually (push and hold).
Press to:
- Display the list.
- 11 DSPL (display)/PTY (Programme Type) button**
To change display items; select PTY in RDS (press **(PTY)**), then push the joystick up/down to search for the station, and press).
- 12 Disc slot**
To insert the disc (label side up). Playback starts automatically.
You can play CD-DA (also containing CD TEXT), CD-R/CD-RW (MP3/WMA files also containing Multi Session) and ATRAC CD (ATRAC3 and ATRAC3plus format).
- 13 RESET button**
Detach the front panel and press the RESET button with a pointed object, such as a ballpoint pen.
Notes
• Before operating the unit for the first time, or after replacing the car battery or changing the connections, you must reset the unit.
• Pressing the RESET button will erase the clock setting and some stored contents.
- 14 Eject button**
To eject the disc.
- 15 ENTER button**
To apply a setting.
- 16 LIST button**
To list up.
- 17 Number buttons**
Buttons 1 to 6 share the same functions as the number buttons on the unit.
- 18 Up (+)/Down (-) buttons**
The same as pushing the joystick up/down.
- 19 Left (←)/Right (→) buttons**
The same as pushing the joystick left/right.
- 20 SCRL (scroll) button**
To scroll display item.
- 21 SOUND button**
To select sound items.

The following buttons on the card remote commander have also different buttons/functions from the unit.

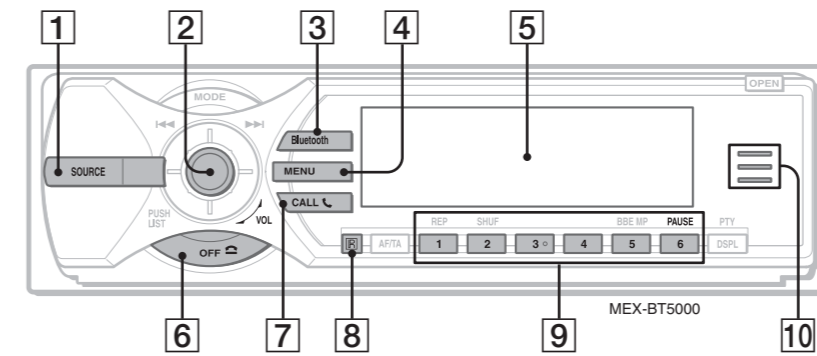
- 15 ENTER button**
To apply a setting.
- 16 LIST button**
To list up.
- 17 Number buttons**
Buttons 1 to 6 share the same functions as the number buttons on the unit.
- 18 Up (+)/Down (-) buttons**
The same as pushing the joystick up/down.
- 19 Left (←)/Right (→) buttons**
The same as pushing the joystick left/right.
- 20 SCRL (scroll) button**
To scroll display item.
- 21 SOUND button**
To select sound items.

- 22 ATT (attenuate) button**
To attenuate the sound. To cancel, press again.
- 23 VOL (volume) +/- buttons**
To adjust volume.

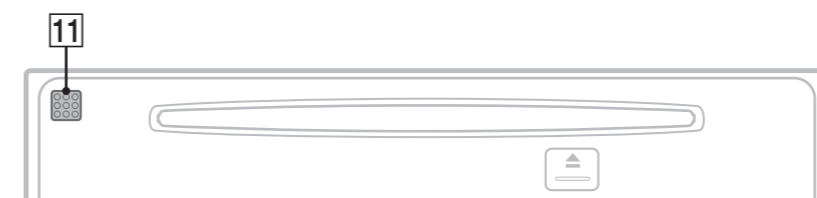
*1 When an MD changer is connected.
*2 If the changer is connected, the operation is different.
*3 When an ATRAC CD is played.
*4 When an MP3/WMA is played.
*5 When a CD/MD changer is connected.
*6 When playing back on this unit.
Note
If the unit is turned off and the display disappears, it cannot be operated with the card remote commander unless **(SOURCE)** on the unit is pressed, or a disc is inserted to activate the unit first.

Bluetooth function

Main unit



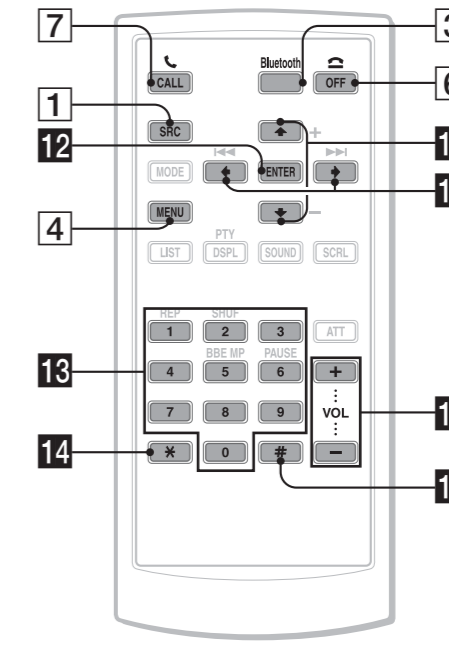
Front panel removed



For details on the Bluetooth function, see the supplied "Enjoy using Bluetooth wireless technology" or "Operating Instructions."

- 1 SOURCE button**
To power on; change the source (Radio/CD/ MD*¹/Bluetooth AUDIO/AUX).
- 2 Joystick**
Rotate to: Adjust the volume.
Push up/down/left/right to: Select a menu item.
Press to: Apply a setting.
Bluetooth audio device*²:
Push left/right to:
- Skip tracks (push).
- Reverse/fast-forward a track (push and hold).
- 3 Bluetooth button**
To access the Bluetooth functions; receive a call.
- 4 MENU button**
To enter menu; receive a call.
- 5 Display window**
- 6 OFF button**
To power off; stop the source; end or reject a call.
- 7 CALL button**
To access the telephone functions; receive a call.
- 8 Receptor for the card remote commander**

Card remote commander RM-X302



- 9 Number buttons**
To call stored dials.
Bluetooth audio device*²:
⑥: PAUSE
To pause playback.
- 10 Bluetooth indicator**
Lights up when the Bluetooth signal is input/output. Goes off when the Bluetooth signal is off.
- 11 Microphone**

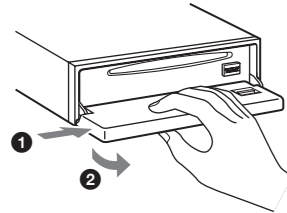
- The following buttons on the card remote commander have also different buttons/functions from the unit.
- 12 ENTER button**
To apply a setting.
- 13 Number buttons**
To input numbers (phone number, passcode, etc.).
Buttons 1 to 6 share the same functions as the number buttons on the unit.
- 14 * button**
- 15 Up (+)/Down (-) buttons**
The same as pushing the joystick up/down.
- 16 Left (←)/Right (→) buttons**
The same as pushing the joystick left/right.
- 17 VOL (volume) +/- buttons**
To adjust volume.
- 18 # button**

*1 When an MD changer is connected.
*2 When a Bluetooth audio device (supports AVRCP of Bluetooth technology) is connected. Depending on the device, certain operations may not be available.

Detaching the front panel

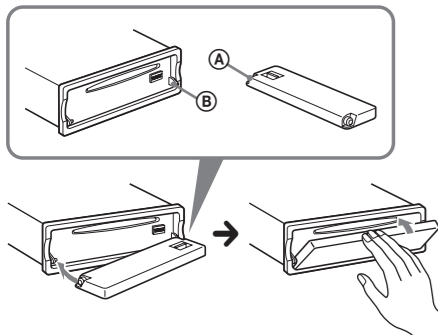
You can detach the front panel of this unit to prevent theft.

- 1 Press **OFF**.
The unit is turned off.
- 2 Press **OPEN**.
The front panel is flipped down.
- 3 Slide the front panel to the right, then gently pull out the left end of the front panel.



Attaching the front panel

Place the hole **A** of the front panel onto the spindle **B** on the unit, then lightly push the left side in. Press **SOURCE** on the unit (or insert a disc) to operate the unit.



SET UP

Setting the clock

The clock uses a 24-hour digital indication.

- 1 Press **MENU**.
- 2 Push the joystick up/down until “Setup” appears, then push it right.
- 3 Push the joystick up/down until “Clock Adjust” appears, then push it right.
- 4 Push the joystick up/down to set the hour and minutes.
To move the digital indication, push the joystick left/right.
- 5 After setting the clock, press the joystick.
The clock starts.

Tip

You can set the clock automatically with the RDS feature. For details, see “Adjusting menu items,” and set to “CT on” (Clock Time).

RADIO

Storing stations automatically

— BTM

The unit selects strong signal stations and stores them. You can store up to 6 stations per band (FM1, FM2, FM3, MW and LW).

Caution

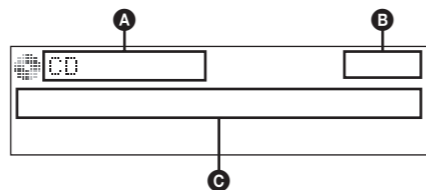
When tuning in stations while driving, use Best Tuning Memory to prevent accidents.

- 1 Press **SOURCE** repeatedly until “TUNER” appears.
To change the band, press **MODE** repeatedly. You can select from FM1, FM2, FM3, MW or LW.
- 2 Press **MENU**.
- 3 Push the joystick up/down until “Receive Mode” appears, then push it right.
- 4 Push the joystick up/down until “BTM” appears.
- 5 Press the joystick.
The unit stores stations in order of frequency on the number buttons.
A beep sounds when the setting is stored.

CD

Display items

Example: when you set Info (information) mode to “All” (see “Adjusting menu items”).



- A** Source/MP3/ATRAC/WMA indication
- B** Clock
- C** Track number/Elapsed playing time, Disc/artist name, Album/group number, Album/group name, Track name, Text information*

* When playing an MP3, ID3 tag is displayed, when playing ATRAC CD, text information written by SonicStage, etc., is displayed, and when playing WMA, WMA tag is displayed.

To change display items **C**, press **DSPL**; scroll display items **C**, press **SCRL** on the card remote commander or set “Auto Scroll on.”

CD

Repeat and shuffle play

- 1 During playback, press **1 (REP)** or **2 (SHUF)** repeatedly until the desired setting appears.

Select	To play
Repeat Track	track repeatedly.
Repeat Album*1	album repeatedly.
Repeat Group*2	group repeatedly.
Shuffle Album*1	album in random order.
Shuffle Group*2	group in random order.
Shuffle Disc	disc in random order.

*1 When an MP3/WMA is played.

*2 When an ATRAC CD is played.

To return to normal play mode, select “Repeat off” or “Shuffle off.”

SET UP RADIO CD

Adjusting menu items

— MENU

- 1 Press **MENU**.
- 2 Push the joystick up/down until the desired menu item appears, then push it right.
The items changes as follows:
Setup ↔ Display ↔ Receive Mode ↔ Sound
- 3 Push the joystick up/down until the desired setting item appears, then push it right.
The digital indication moves to the right (setting selection) side.
- 4 Push the joystick up/down to select the setting, then press it.
The setting is complete.
- 5 Press **MENU**.
The display returns to normal play/reception mode.

Note

Displayed items will differ, depending on the source and setting.

Tips

- You can go to the next menu level by pressing the joystick.
- In step 5, push the joystick left until “EXIT” appears, then press the joystick, instead of pressing **MENU**.
- You can enter the Sound setting menu directly by pressing **SOUND** on the card remote commander.

The following items can be set (follow the page reference for details):
“•” indicates the default settings.

Setup

Clock Adjust

To set the clock.

CT (Clock Time)

To set “on” or “off” (•).

Beep

To set “on” (•) or “off.”

RM (Rotary Commander)

To change the operative direction of the rotary commander controls.
– “NORM” (•): to use the rotary commander in the factory-set position.
– “REV”: when you mount the rotary commander on the right side of the steering column.

AUX Audio*

To turn the AUX source display “on” (•) or “off.”

Version*

To display the unit’s firmware version.

Display

Image

To set various display images.
– “SpaceProducer” (•): to create animated on-screen patterns in time with the music.
– “All”: to step repeatedly through the display images in all display modes.
– “off”: to not display any image.
– “SA 1 – 5”: to display the Spectrum Analyzer.
– “Movie 1 – 3”: to display a movie.
– “Wallpaper 1 – 3”: to display a wallpaper.
– “SA All”/“Movie All”/“Wallpaper All”: to step repeatedly through the display images of each mode.

Info (Information)

To display the items (depending on the source, etc.).
– “All”: to display all items.
– “Simple” (•): to not display any items.
– “Clear”: to have items automatically disappear.

Demo* (Demonstration)

To set “on” (•) or “off.”

Dimmer

To change the brightness of the display.
– “Auto” (•): to dim the display automatically when you turn lights on.
– “on”: to dim the display.
– “off”: to deactivate the dimmer.

Auto Scroll

To scroll long displayed item automatically when the disc/album/group/track is changed.
– “on”: to scroll.
– “off” (•): to not scroll.

ID3 Tag

To switch the priority of the displayed ID3 tag character (when CD is selected as the source).
– “EUR” (•): Western Europe display character priority.
– “RUS”: Cyrillic display character priority.

Receive Mode

Local (Local seek mode)

– “off” (•): to tune normal reception.
– “on”: to only tune into stations with stronger signals.

Mono (Monaural mode)

To improve poor FM reception, select monaural reception mode.
– “off” (•): to hear stereo broadcast in stereo.
– “on”: to hear stereo broadcasts in monaural.

Regional

To set “on” (•) or “off.”

BTM

To store radio stations automatically.

Sound

EQ3 Preset

To select an equalizer type: “Xplod,” “Vocal,” “Edge,” “Cruise,” “Space,” “Gravity,” “Custom” or “Off” (•).

EQ3 Tune

To customize the equalizer curve.

DSO

To select the DSO mode: “1,” “2,” “3” or “off” (•).
The larger the number, the more enhanced the effect.

Balance

To adjust the balance between the right and left speakers: “R10” – “±0” (•) – “L10”

Fader

To adjust the balance between the front and rear speakers: “F10” – “±0” (•) – “R10”

Subwoofer

To adjust the subwoofer volume: “+10” – “±0” (•) – “–10”
 (“– ∞” is displayed at the lowest setting.)

LPF (Low Pass Filter)

To select the subwoofer cut-off frequency: “off” (•), “125Hz” or “78Hz.”

AUX Level

To adjust the volume level for each connected auxiliary equipment. This setting negates the need to adjust the volume level between sources.
Adjustable level: “+6 dB” – “±0 dB” (•) – “–6 dB”

* When the unit is turned off.

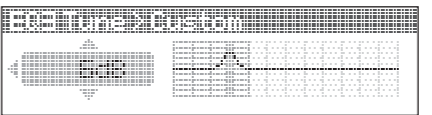
SET UP RADIO CD

Customizing the equalizer curve

— EQ3 Tune

“Custom” of EQ3 allows you to make your own equalizer settings.

- 1 Select a source, then press **MENU**.
- 2 Select “Sound” → “EQ3 Preset” → “Custom,” using the joystick.
- 3 Select “EQ3 Tune” using the joystick.
- 4 Select the desired frequency range from “LOW,” “MID” and “HI.”
- 5 Select the frequency you wish to adjust.
Adjustable frequency in each range:
LOW: 60 Hz or 100 Hz
MID: 500 Hz or 1.0 kHz
HI: 10.0 kHz or 12.5 kHz
- 6 Adjust the equalizer curve.
The volume level is adjustable in 1 dB steps, from –10 dB to +10 dB.



- 7 Press the joystick.

Repeat steps 4 to 7 to adjust other frequencies.

To restore the factory-set equalizer curve, select “Initialize” → “Yes” in step 4.

Tip

Other equalizer types are also adjustable.

Free Manuals Download Website

<http://myh66.com>

<http://usermanuals.us>

<http://www.somanuals.com>

<http://www.4manuals.cc>

<http://www.manual-lib.com>

<http://www.404manual.com>

<http://www.luxmanual.com>

<http://aubethermostatmanual.com>

Golf course search by state

<http://golfingnear.com>

Email search by domain

<http://emailbydomain.com>

Auto manuals search

<http://auto.somanuals.com>

TV manuals search

<http://tv.somanuals.com>