

TV/WEATHER/FM Stereo/AM PLL Synthesized Radio

Operating Instructions



“WALKMAN” is a registered trademark of Sony Corporation to represent Headphone Stereo products. is a registered trademark of Sony Corporation.

TV/WEATHER/FM/AM WALKMAN
SRF-M85V Printed on 100% recycled paper using VOC (Volatile Organic Compound)-free vegetable oil based ink.

© 2004 Sony Corporation Printed in China

<http://www.sony.net/>

For customers who purchased this product in the USA Please register this product on line at <http://www.sony.com/productregistration>. Proper registration will enable us to send you periodic mailings about new products, services, and other important announcements. Registering your product will also allow us to contact you in the unlikely event that the product needs adjustment or modification. Thank you.

WARNING

You are cautioned that any changes or modifications not expressly approved in this manual could void your authority to operate this equipment.

This device complies with the Part 15 of the FCC Rules. Operation is subject to the condition that this device does not cause harmful interference.

If you have any questions about this product, you may call: Sony Customer Information Services Center 1-800-222-7669 or <http://www.sony.com/>

Declaration of Conformity
Trade Name: SONY
Model: SRF-M85V
Responsible Party: Sony Electronics Inc.
Address: 16450 W. Bernardo Dr, San Diego, CA 92127 USA
Telephone Number: 858-942-2230

This device complies with Part 15 of the FCC Rules. Operation is subject to the following two conditions: (1) This device may not cause harmful interference, and (2) this device must accept any interference received, including interference that may cause undesired operation.

Features

- TV/WEATHER/FM/AM 4 band PLL (phase locked loop) synthesized armband radio.
- A total of 30 stations can be preset, 5 TV stations, 5 WEATHER stations, 15 FM stations and 5 AM stations.
- Stopwatch, split and pitch timer functions.
- Wearable round design for armband and belt-holder use.
- Water-resistant for all –weather use.
- MEGA BASS for dynamic bass sound.

Precautions

- Operate the unit only on 1.5 V DC with one size AAA (R03) battery.
- Avoid exposure to temperature extremes, direct sunlight, moisture, sand, dust or mechanical shock. Never leave the unit in a car parked under the sun.
- Should anything fall into the unit, remove the battery and have the unit checked by qualified personnel before operating it any further.
- To clean the casing, use a soft cloth dampened with a mild detergent solution.
- In vehicles or buildings, radio reception may be difficult or noisy. Try listening near a window.

Notes on Headphones

Road safety

Do not use headphones while driving, cycling, or operating any motorized vehicle. It may create a traffic hazard and is illegal in many areas. It can also be potentially dangerous to play your headphones at high volume while walking, especially at pedestrian crossings. You should exercise extreme caution or discontinue use in potentially hazardous situations.

Preventing hearing damage

Avoid using headphones at high volume.

Hearing experts advise against continuous, loud and extended play. If you experience a ringing in your ears, reduce volume or discontinue use.

Caring for others

Keep the volume at a moderate level. This will allow you to hear outside sounds and to be considerate to people around you.

Warning

If there is lightning when you are using the unit, take off the headphones immediately.

Cautions on Water-resistance

This unit is designed so that it can be used with slight exposure to rain, snow and other forms of moisture, but there are several points on which caution should be observed.

- Do not allow it to come in contact with large amounts of water.
- Do not immerse it in water.
- If water should get on it or if it should fall into water, take it out immediately and wipe it off with a dry cloth. **The interior of the battery compartment has no water-resistance. The battery may corrode,** so wipe out the interior of the battery compartment as follows.
 - Open or close the battery compartment with dry hands in a place without exposure to any water.
 - Wipe off the battery and the inside of the battery compartment. Give special attention to the contacts so that no water remains on them.

If you have any questions or problems concerning your unit, please consult your nearest Sony dealer.

Troubleshooting

Should any problem persist after you have made the following checks, consult your nearest Sony dealer.

All buttons do not operate at all.

- “” is displayed. Slide down the **HOLD** lever so that “” disappears.

Very weak or interrupted sound, or unsatisfactory reception

- Weak battery
- In a vehicle or in a building, move closer to a window.

Display is dim, or no indication is displayed.

- Weak battery.
- The unit is being used in extremely high or low temperatures or in a place with excessive moisture.

The station cannot be received when the preset was tuned.

- You chose the wrong preset number.
- The memory of the station has been initialized. Preset the station again.

The power cannot be turned on, and “” is flashing in the display.

- The battery has been completely exhausted.

The preset stations may be initialized, if a maintenance service is performed. Please note down your settings in case you want to preset them again.

Specifications

Time display		
12-hour system		
Frequency range		
Band	Range	Channel step
TV	2 - 13 ch	1 channel
WEATHER	1 - 7 ch	1 channel
FM	87.5 – 108 MHz	0.1 MHz
AM	530 – 1 710 kHz	10 kHz

Output

(headphones) jack (ø 3.5 mm stereo mini jack) 16 Ω

Power output

5 mW + 5 mW (at 10 % harmonic distortion)

Power requirements

1.5 V DC, one size AAA (R03) battery

Dimensions

Approx. 95.5 × 69.3 × 37.5 mm (w/h/d)
(3 ⁷/₈ × 2 ³/₄ × 1 ¹/₂ inches) incl. projecting parts and controls

Mass

Approx. 88.3 g (3.1 oz.) incl. battery

Supplied accessories

Stereo headphones (vertical in the ear type) (1), Arm band (1)

Design and specifications are subject to change without notice.



Lead-free solder is used for soldering.

Halogenated flame retardants are not used in printed wiring boards.

PVC is not used in Stereo Headphones cord.

Installing the Battery

(See Fig. **A**–⑥)

- Open the battery compartment lid and install one size AAA (R03) battery (not supplied) with correct polarity. When a battery is first installed, “AM 12:00” flashes in the display. Once the current time is set, the flashing stops.
- Close the lid.

Battery Life (Approx. hours)	(JEITA*)			
When using	TV	WEATHER	FM	AM
Sony alkaline size AAA (LR03)	27	27	27	36
Sony size AAA (R03)	10	10	10	16

* Measured by JEITA (Japan Electronics and Information Technology Industries Association) standards. The actual battery life may vary depending on the circumstance of the unit.

When to replace the battery

You can check the remaining battery power that appears in the display. The indicators are as follows:

Indicator

	Full strength*
↓ 	Weakening*
↓ 	When the battery becomes exhausted, the unit will turn off. Replace with new battery. When you press POWER after installing the new battery, the indicator changes to “”.

* Displayed only when the radio is turned on.

Note

Do not take more than 30 seconds to replace the battery, otherwise, your clock, pitch timer and countdown timer settings and preset stations will be initialized. Should that happen, reset the functions again.

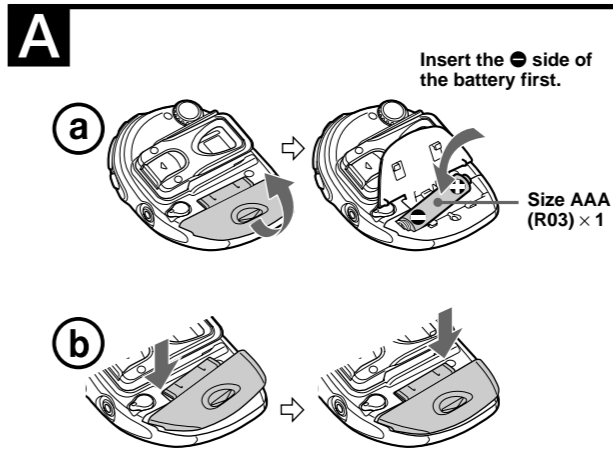
Notes on battery

- Do not charge the dry battery.
- Do not carry the dry battery together with coins or other metallic objects. It can generate heat if the positive and negative terminals of the battery are accidentally come into contact with metallic objects.
- When you are not going to use the unit for a long time, remove the battery to avoid damage from battery leakage and corrosion.

To attach the battery compartment lid if it is accidentally detached (See Fig. **A**–⑥)

The battery compartment lid is designed to come off when opened with excessive force. To put it back on, see the illustration.

- Insert one side of the lid as illustrated.
- Push the other side to attach.



SONY®

Tape Cassette Player/Recorder/CD Player/Mini Disc
DAT/Radio/Head Phone/Speaker/MIC/Personals

Portable Audio

LIMITED WARRANTY

Sony Electronics Inc. (“Sony”) warrants this Product (including any accessories) against defects in material or workmanship as follows:

- For a period of one (1) year from the date of purchase if this Product is determined to be defective, Sony will repair or replace the Product, at its option, at no charge. After this one (1) year period, you must pay for the replacement unit. This warranty does not cover costs incurred in connection with the removal and re-installation of radios, speakers or accessories, nor does it cover any other contingent expenses.
- To obtain warranty service, you must take the Product, or deliver the Product freight prepaid, in either its original packaging or packaging affording an equal degree of protection, to any Factory Sony Service facility or to the Laredo Fulfillment Center. See below for additional information.

This warranty does not cover customer instruction, installation, set up adjustments or signal reception problems.

This warranty does not cover cosmetic damage or damage due to acts of God, accident, misuse, abuse, negligence, commercial use, or modification of, or to any part of the Product, including the antenna. This warranty does not cover damage due to improper operation or maintenance, connection to improper voltage supply, or attempted repair by anyone other than a facility authorized by Sony to service the Product. This warranty does not cover Products sold AS IS or WITH ALL FAULTS, or consumables (such as fuses or batteries). This warranty is valid only in the United States.

Proof of purchase in the form of a bill of sale or receipted invoice which is evidence that the unit is within the Warranty period must be presented to obtain warranty service.

This warranty is invalid if the factory applied serial number has been altered or removed from the Product.

REPAIR OR REPLACEMENT AS PROVIDED UNDER THIS WARRANTY IS THE EXCLUSIVE REMEDY OF THE CONSUMER. SONY SHALL NOT BE LIABLE FOR ANY INCIDENTAL OR CONSEQUENTIAL DAMAGES FOR BREACH OF ANY EXPRESS OR IMPLIED WARRANTY ON THIS PRODUCT. EXCEPT TO THE EXTENT PROHIBITED BY APPLICABLE LAW, ANY IMPLIED WARRANTY OF MERCHANTABILITY OR FITNESS FOR A PARTICULAR PURPOSE ON THIS PRODUCT IS LIMITED IN DURATION TO THE DURATION OF THIS WARRANTY.

Some states do not allow the exclusion or limitation of incidental or consequential damages, or allow limitations on how long an implied warranty lasts, so the above limitations or exclusions may not apply to you. In addition, if you enter into a service contract with the Sony Partnership within 90 days of the date of sale, the limitation on how long an implied warranty lasts does not apply to you. This warranty gives you specific legal rights, and you may have other rights which vary from state to state.

The Address of the Laredo Fulfillment Center is:

Laredo Fulfillment Center
10227 Crossroads Loop Suite B
Laredo, TX 78045

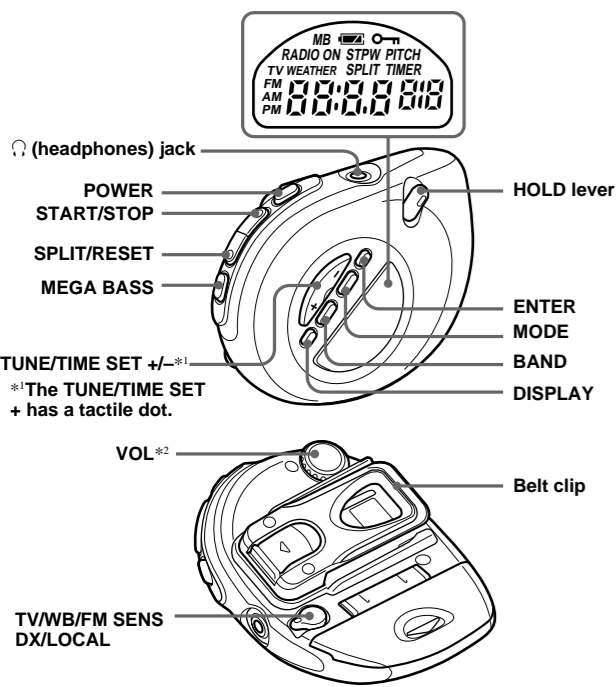
For your convenience, Sony Electronics Inc. has established telephone numbers for frequently asked questions:

To locate the servicer or dealer nearest you, or for service assistance or resolution of a service problem, or for product information or operation, call:

Sony Customer Information Services Center
1-800-222-7669
or visit the Sony Web Site:
www.sony.com

For an accessory or part not available from your authorized dealer, call:

1-800-488-SONY (7669)



*There is a tactile dot beside VOL to show the direction to turn up the volume.

Using the Arm Band

(See Fig. **B-①**)

- Slide the connector onto the unit until you hear a click.
- Unwind and straighten the wraparound arm band. To more easily straighten the band, slightly bend the tip of the band in the opposite direction.
- Hold the body of the unit and attach the straightened band to your arm. The band will wind by itself.
- Tighten the band with the rubber belt.

To remove the arm band from the unit (See Fig. **B-②**)

While holding down "PUSH RELEASE" (⓪), slide the connector to remove the arm band (Ⓜ).

The arm band can be attached either on left or right arm by changing up side down. The unit can also be removed with the arm band attached on your arm, as instructed above.

To vary the length of the rubber belt to fit your arm (See Fig. **B-③**) Move the velcro fastener to the proper position.

If the rubber belt and wraparound band becomes dirty

Remove the rubber belt from the unit and clean them.

Caution (See Fig. **B-④**)

- Avoid bending the wraparound band forcibly in the opposite direction. It may break.
- The straightened band will wind easily when you touch or wiggle it. Be sure to treat it carefully.

Preventing Accidental Change

— HOLD Function

When you slide **HOLD** in the direction of the arrow, "o-n" appears in the display. All the other buttons on the radio will become inoperative. This function prevents the radio from being unintentionally turned on, or the radio frequency from being accidentally changed.

To cancel HOLD, slide **HOLD** in the opposite direction of the arrow so that "o-n" disappears.

Setting the Clock

The display will flash "AM 12:00" when the battery is first inserted.

- Press **DISPLAY** repeatedly to select the clock mode when the clock mode is not on.
- Hold down **ENTER** for more than 2 seconds. The beep sounds and the hour flashes in the display.

- Press **TUNE/TIME SET +** or **-** until the correct hour appears in the display. Each press changes the digit(s) by one. When you keep the button pressed, the digit(s) change rapidly.

- Press **ENTER**. The beep sounds and the minute starts to flash.

Repeat step 3 to set the minute. After setting the minute, press **ENTER** again. The two beeps sound and the clock starts from 0 seconds.

Notes

- One you start setting the clock, you must perform each step within 65 seconds, or the clock setting mode will be cancelled.
- 12-hour system: "AM 12:00" = midnight, "PM 12:00" = noon.

Changing AM Channel Step

The AM channel step differs depending on areas. The channel step of this unit is factory-set to 10 kHz. Change the settings as shown below to be able to listen to the radio.

Area	Channel step
North and South American countries/regions	10 kHz
Other countries/regions	9 kHz

Note

When the AM channel step is changed, the preset stations for AM will be initialized.

- Press **POWER** to turn off the power.
- Press **DISPLAY** repeatedly to select the clock mode when the clock mode is not on.

- While holding down **TUNE/TIME SET +** or **-**, keep pressing **MODE** for more than 5 seconds.

Two short beeps sound, and the AM channel step will be changed.

"AM 9" (or "AM 10") is displayed for about 2 seconds.

If you proceed to step 3 again, the channel step changes again.

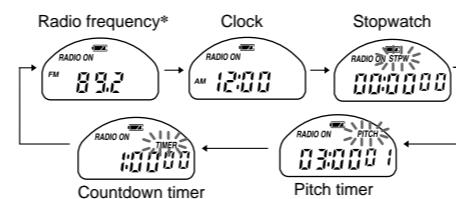
Selecting the Mode

You can use this unit as a radio, clock, stopwatch, pitch timer or countdown timer.

The functions of clock, stopwatch, pitch timer, countdown timer are available even if the power is off.

Press **DISPLAY** to select a function mode.

Each function mode can be selected as follows:



* Selected only when the power is on.

Playing the Radio

— Manual Tuning

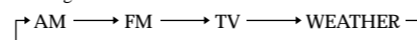
- Connect the headphones to the (headphones) jack.
- Press **POWER** to turn on the radio. "RADIO ON" appears in the display.
- If "P" is displayed, press **MODE** so that "P" disappears.



Pressing **MODE** will switch over between manual tuning mode and preset tuning mode.

- Press **BAND** to select the band.

Each press changes the band as follows:



- Press **TUNE/TIME SET +** or **-** to select the desired frequency. If you hold down **TUNE/TIME SET +** or **-**, the frequency or channel changes rapidly.

When the frequency matches the broadcast frequency, the broadcast will be received.

- Adjust the volume using **VOL**.

To turn off the radio, press **POWER**.

Improving the Reception

TV/WEATHER/FM: Extend the headphones cord which functions as the TV/WEATHER/FM antenna (See Fig. **C-①**).

AM: Rotate the unit horizontally for optimum reception. A ferrite bar antenna is built-in the unit (See Fig. **C-②**).

Set **TV/WB/FM SENS** to **LOCAL** if interference is prevalent and reception is too strong. Under normal conditions, set it to **DX**.



Obtain Powerful Bass Sound

Press **MEGA BASS**.

"MB" indication appears in the display when the MEGA BASS function is on. The MEGA BASS function intensifies the bass sound for richer quality audio reproduction.

Presetting Your Favorite Station

— Preset Tuning

You can preset up to 5 stations each for TV, WEATHER and AM, and 15 stations for FM. Also, you can delete the preset station whether it is factory-set or preset by yourself.

Presetting a Station

- Follow steps 1 to 5 in "Playing the Radio" and manually tune in to the station you wish to preset.
- Hold down **ENTER** until the preset number flashes.

If there is a preset number that has no preset station, that preset number flashes.

When all the preset numbers are set to certain stations, the following occurs:

- Initialized (factory-set): "1" flashes and "P" appears.
- After tuning in a preset station: The next preset number after the one last preset flashes and "P" appears.



- Press **TUNE/TIME SET +** or **-** to select the number you wish to preset, then press **ENTER**.

When you select the preset number using **TUNE/TIME SET +** or **-**, "P" appears if that number has a preset station. If it has no preset station, only the number flashes and "P" does not appear.

When you press **ENTER**, the selected preset number lights up in the display.

Example: Display window when you preset FM 90.0 MHz in preset number 2.



To preset another station, repeat these steps.

To change the preset station, preset a new station. The previous station will be canceled.

To cancel the presetting mode, press **MODE**.

Note

If you do not press **TUNE/TIME SET +** or **-**, or **ENTER** within 65 seconds, the preset tuning mode will be canceled.

Tuning in to a Preset Station

- Press **POWER** to turn on the radio.
- Press **MODE** so that "P" and preset number appear.
- Select the band with **BAND**.
- Press **TUNE/TIME SET +** or **-** to select the desired preset number.
- Adjust the volume using **VOL**.

To turn off the radio, press **POWER**.

Note

If you hold down **MODE** for more than 2 seconds, the unit enters the preset station deleting mode. Press **MODE** again to return to the previous mode.

Deleting a Preset Station

- Follow steps 1 and 2 in "Tuning in to a Preset Station".
- Select the band with **BAND**.
- Press **TUNE/TIME SET +** or **-** to select the preset number to be deleted.
- Hold down **MODE** for more than 2 seconds until "P", "DEL" and the preset number flash.



preset number to be deleted

- While the letters and the preset number are flashing, press **ENTER**.

The station set to the preset number just before the deleted station will be displayed.

To delete other stations, repeat steps 2 to 5.

If all the preset stations are deleted, "P-" appears in the display.

To cancel deleting, press **MODE** while "P", "DEL" and the preset number are flashing.

Using the Stopwatch

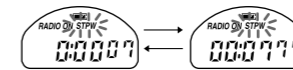
The stopwatch can time up to 99 hours 59 minutes and 59.99 seconds, in 1/100-second increments.

- Press **DISPLAY** to select the stopwatch. "STPW" flashes in the display.
- Press **START/STOP** to start. The display shows the elapsed time.
- Press **START/STOP** to stop.

To reset to zero, press **SPLIT/RESET** when the stopwatch is in the stop status.

The stopwatch comes with two display modes. To switch to the hour-minute-second display, press **ENTER**.

To switch to the minute-second-split second display, press **ENTER** again.



When the count time exceeds "59:59 99" during the minute-second-split second display, the display switches to the hour-minute-second display.

To switch to the other modes during counting, press **DISPLAY**.

"STPW" stops flashing if changed to other mode while the stopwatch counts down.

To listen to the radio while the stopwatch is running, press **POWER**. The display will switch to the radio frequency for a few seconds.

Displaying the Split Time

To display the current split time, press **SPLIT/RESET** while the stopwatch is running. "SPLIT" flashes in the display. The stopwatch keeps counting during the display.

To return to the count display, press **SPLIT/RESET** again while the split time is being displayed.

Using the Pitch Timer

The pitch timer allows setting the timer with an identical length of time repeatedly. The functions of the radio, the stopwatch, and the countdown timer are available even while the pitch timer is being used.

- Press **DISPLAY** to select the pitch timer. "PITCH" flashes in the display.
- Hold down **ENTER** for more than 2 seconds. The beep sounds and the countdown duration flashes in the display.



- Press **TUNE/TIME SET +** or **-** to set the desired countdown duration for the pitch timer.

The countdown duration can be set from 1 second to 59 minutes 59 seconds, in 1-second increments.

- Press **ENTER**. The beep sounds and the number of times flashes in the display.



- Press **TUNE/TIME SET +** or **-** to set the desired number of times.

The number of times can be set up to 99.

- Press **ENTER**. The two beeps sound and the number of times stops flashing.
- Press **START/STOP**. Countdown starts. After the preset countdown duration, the two beeps sound three times.

When the last pitch timer setting is finished, the display switches to the pitch timer display even in another display mode and a long beep sounds, and then returns to the previous display.

To stop the long beep, press any button.

To pause the countdown on the pitch timer, press **START/STOP** while counting down. At this time, the countdown is reset by pressing **SPLIT/RESET**. The display will show the set-up countdown duration and number of times.

To switch to the other modes, press **DISPLAY**.

"PITCH" stops flashing if changed to other mode while the pitch timer counts down.

Using the Countdown Timer

You can use the built-in countdown timer to turn off the radio automatically after a preset duration.

- Press **DISPLAY** to select the countdown timer. "TIMER" flashes in the display.
- Hold down **ENTER** for more than 2 seconds. The beep sounds, and the countdown duration starts flashing.
- Press **TUNE/TIME SET +** or **-** to set the desired countdown duration for the timer.

The countdown duration can be set from 1 minute to 2 hours, in 1-minute increments.

- Press **ENTER**. The two beeps sound and the countdown duration stops flashing.

- Press **START/STOP**. Countdown starts. The radio is automatically turned on when the radio is off. After the preset countdown duration, the four beeps sound five times and the radio is turned off. To stop the beeps, press any button.

To turn off the radio before the preset time, press **POWER**.

To pause the countdown on the countdown timer, press **START/STOP** while counting down. At this time, the countdown is reset by pressing **SPLIT/RESET**. The display will show the set-up countdown duration.

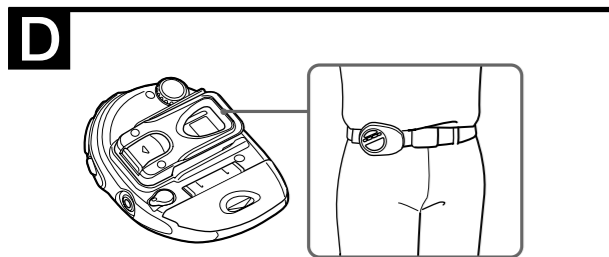
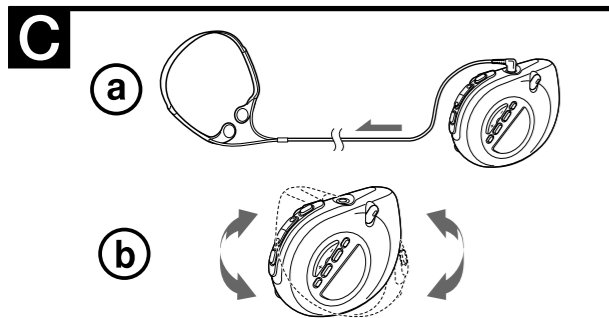
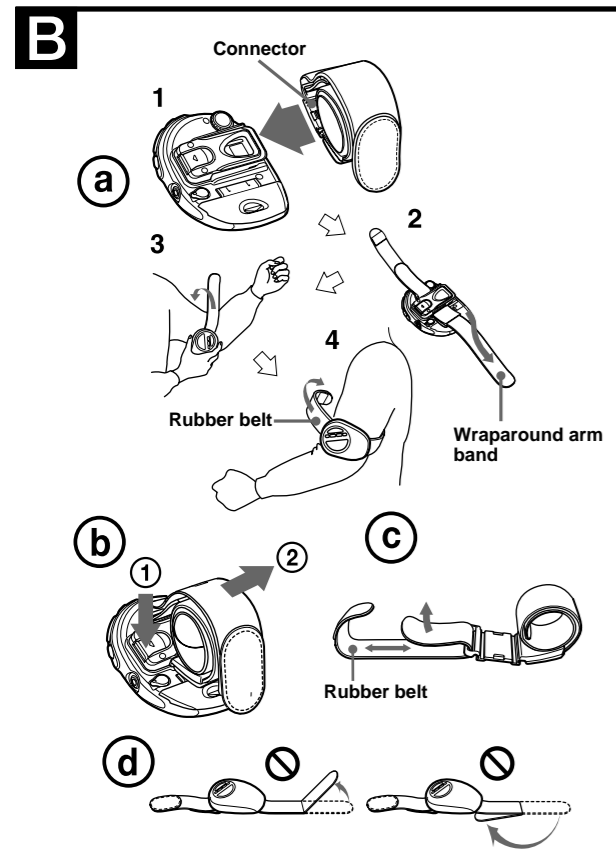
To switch to the other modes, press **DISPLAY**.

"TIMER" stops flashing if changed to other mode while the countdown timer counts down.

Using the Belt Clip

(See Fig. **D**)

Use the belt clip when attaching the unit to your belt.



Free Manuals Download Website

<http://myh66.com>

<http://usermanuals.us>

<http://www.somanuals.com>

<http://www.4manuals.cc>

<http://www.manual-lib.com>

<http://www.404manual.com>

<http://www.luxmanual.com>

<http://aubethermostatmanual.com>

Golf course search by state

<http://golfingnear.com>

Email search by domain

<http://emailbydomain.com>

Auto manuals search

<http://auto.somanuals.com>

TV manuals search

<http://tv.somanuals.com>