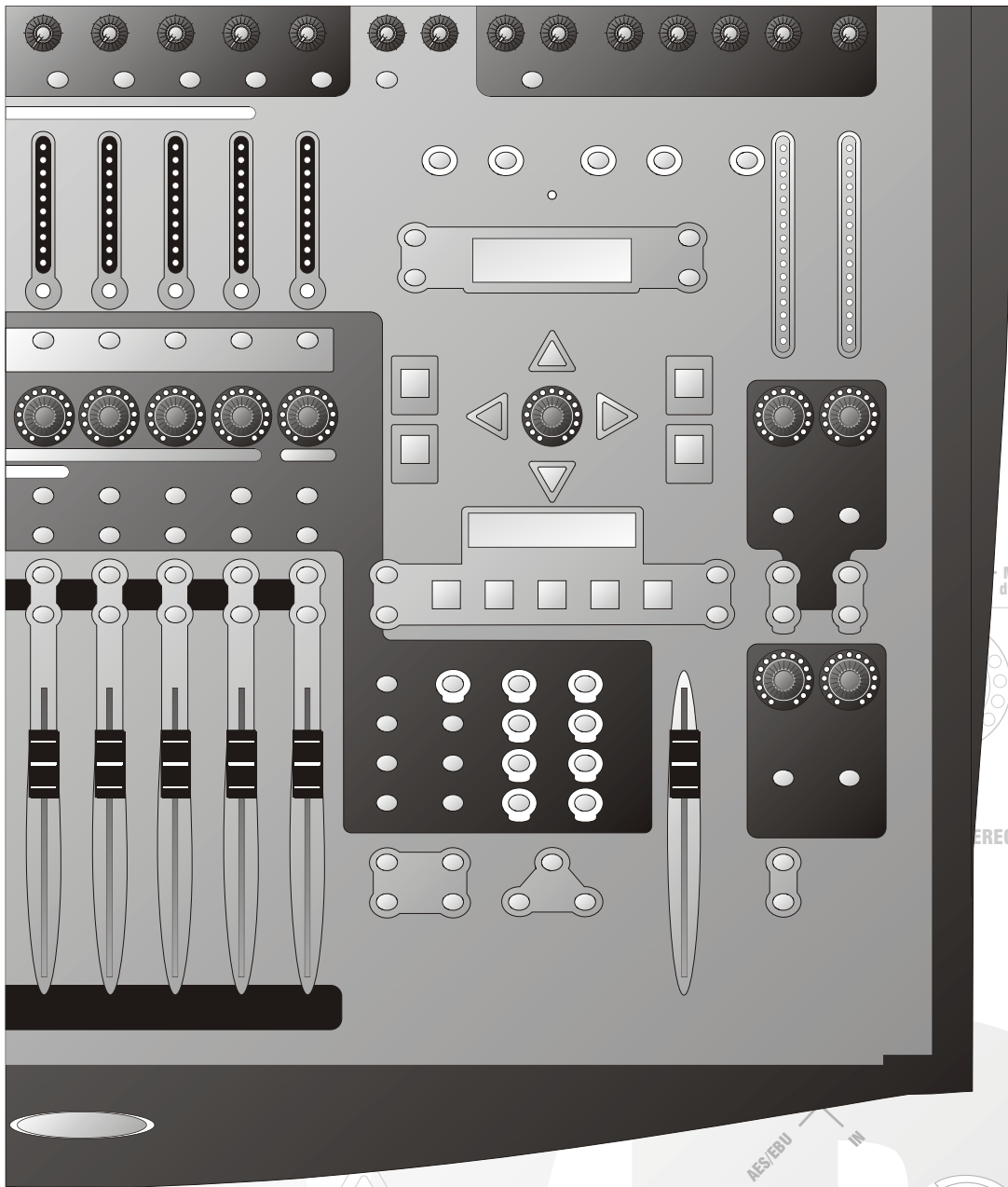


SOUNDcraft

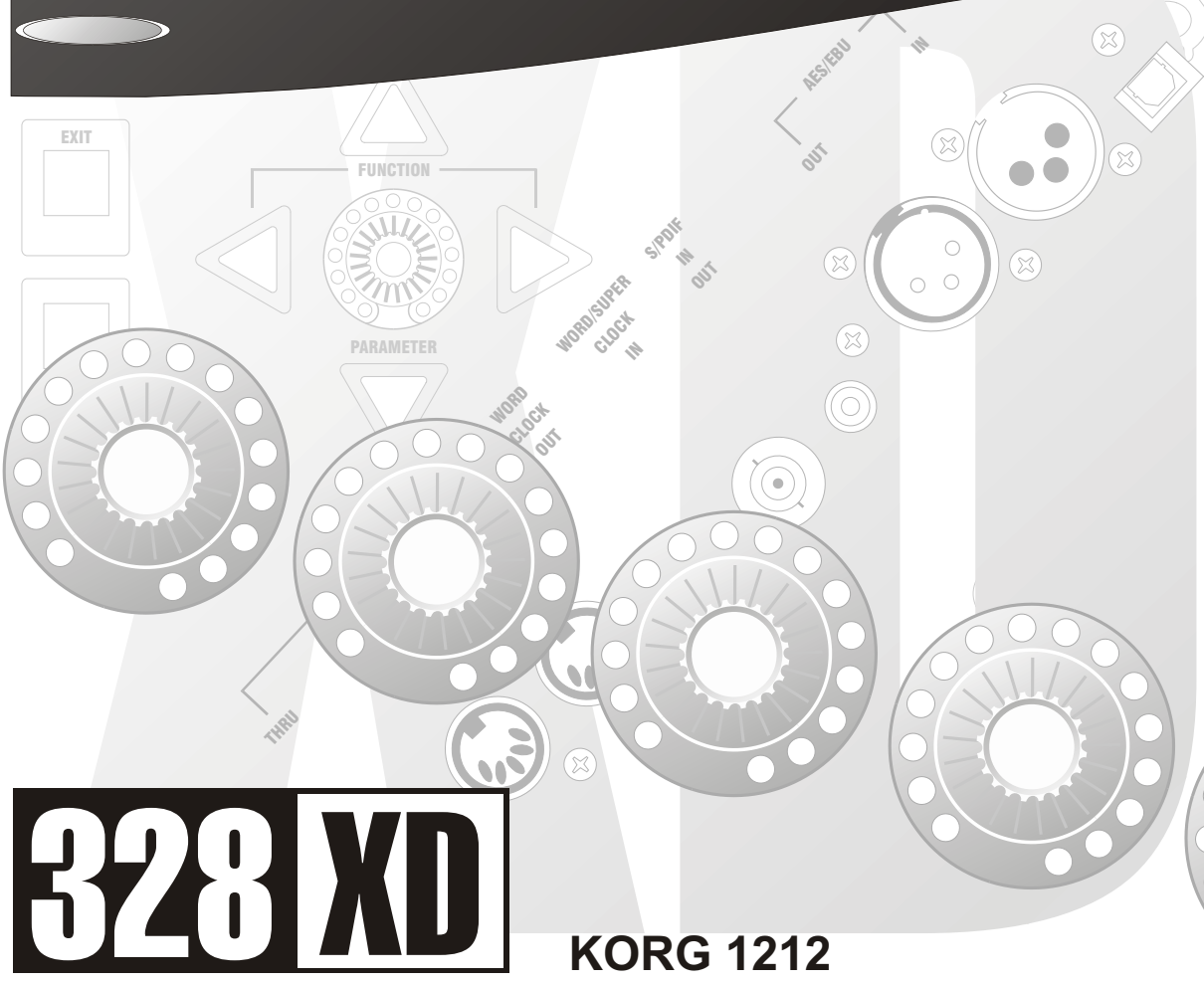


MIX — RIGHT
dBFS



SELECT

MUTE



328 XD

KORG 1212

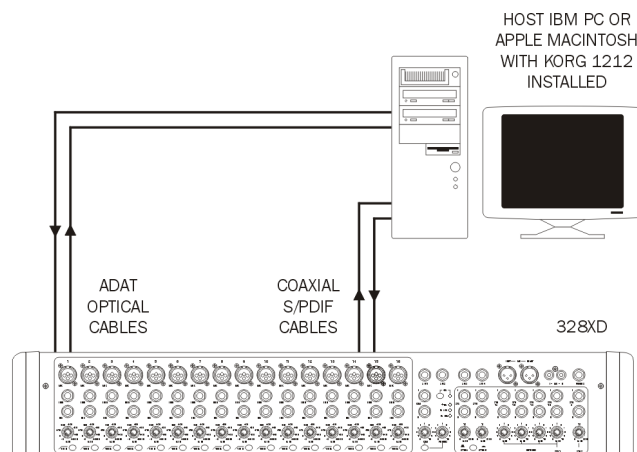
328XD AND KORG 1212

Connecting the system	2
328XD Configuration	3
Korg 1212 Configuration	5
Using the 1212 with the 328XD	8
Additional Information	9

CONNECTING THE SYSTEM

Audio Connections

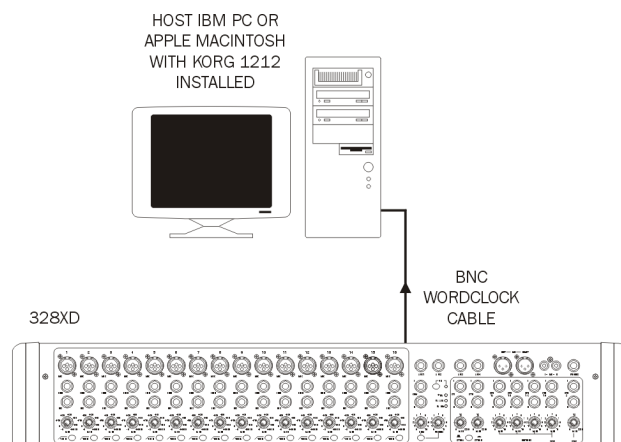
Audio connections should be made as shown in the diagram below. Toslink optical cables must be connected between the ADAT Out ports of the 1212 card to the ADAT In ports of the 328XD and vice versa. Coaxial digital S/PDIF cables must also be connected from the 1212 S/PDIF output to the 328XD S/PDIF input and vice versa.



In this way, the ADAT connections allow digital transfer of either direct outputs for input channels 1-8 to the 1212 card, or the 328XD's 8 Group outputs. The S/PDIF output from the console can be assigned to either the Mix output or 1 of 3 stereo auxiliary outputs (Aux 1/2, Aux 3/4 or FX 1/2 dry sends) The 328XD S/PDIF Input can be configured to be a digital Stereo Input or as a digital 2 Track Return.

Other Connections

Besides the audio connections, the 328XD wordclock output should be connected to the 1212 wordclock input, to enable the 1212 to synchronize to the 328XD wordclock. In this configuration, the 328XD is wordclock master, and the 1212 is the wordclock slave.



328XD CONFIGURATION

Wordclock

To configure the 328XD as the wordclock master, enter the 328XD Menu page by pressing the <MENU> button to the right hand side of the LCD display. Using the PARAM encoder beneath the display, scroll up or down until the 'Clock Source Sel' menu is highlighted, and press <ENTER>. Here, either 'Internal 44.1kHz' or 'Internal 48kHz' clock must be selected for the 328XD to function as wordclock master. Set this to the sample rate you wish to work at. Press <ENTER> to confirm the sample rate setting and <MENU> to return to the menu pages.

```
<Wordclock Src.>  
Internal:48.0kHz
```

Tape Ports

To ensure that the 328XD Tape Ports are set to ADAT to work with the 1212, enter the 328XD Menu pages by pressing the <MENU> button to the right hand side of the LCD display. Using the PARAM encoder beneath the display, scroll up or down until the 'Tape Port Select' menu is highlighted and press <ENTER>.

Now repeatedly press the Up cursor arrow until the '<Tape Ch17-24 >' menu page is displayed. Using the rotary encoder, set the 'Bank Source' to 'ADAT'. Press the Down cursor arrow once, to set the wordlength with the PARAM encoder:

```
<Tape Ch17->24 >  
Bank Source:ADAT
```

The 1212 is capable of 20-bit recording, and so for optimum results, a setting of 20-bit can be selected here. If your audio sequencer software only allows 16-bit recording, 16-bit should be selected. The sequencer manuals should be consulted for further information.

Set the desired wordlength on the 328XD with the PARAM encoder.

```
<Tape Ch17->24 >  
Wordlength: 20
```

Press the <MENU> button to return to the main menu.

S/PDIF Input

The 328XD S/PDIF input can be routed to any one of the following inputs:

Stereo Input 1, Stereo Input 2, FX-1, FX-2, 2 Track Tape Return,
provided that the AES/EBU input has not already been assigned to that input.

Commonly the 1212 S/PDIF output would be routed to Stereo Input 2, or the 2 Track Tape Return input.

NOTE: Assigning a digital source to an input will override any analogue signal present on that input.

Press **<MENU>** to enter the menu pages, scroll through the pages until the 'SPDIF I/P Setup' menu is highlighted and press **<ENTER>**. Using the PARAM encoder, select the destination for the S/PDIF input, and press **<ENTER>** to confirm the setting. Press **<MENU>** to return to the menu pages.

```
< SPDIF Input >  
Route To: STE 1
```

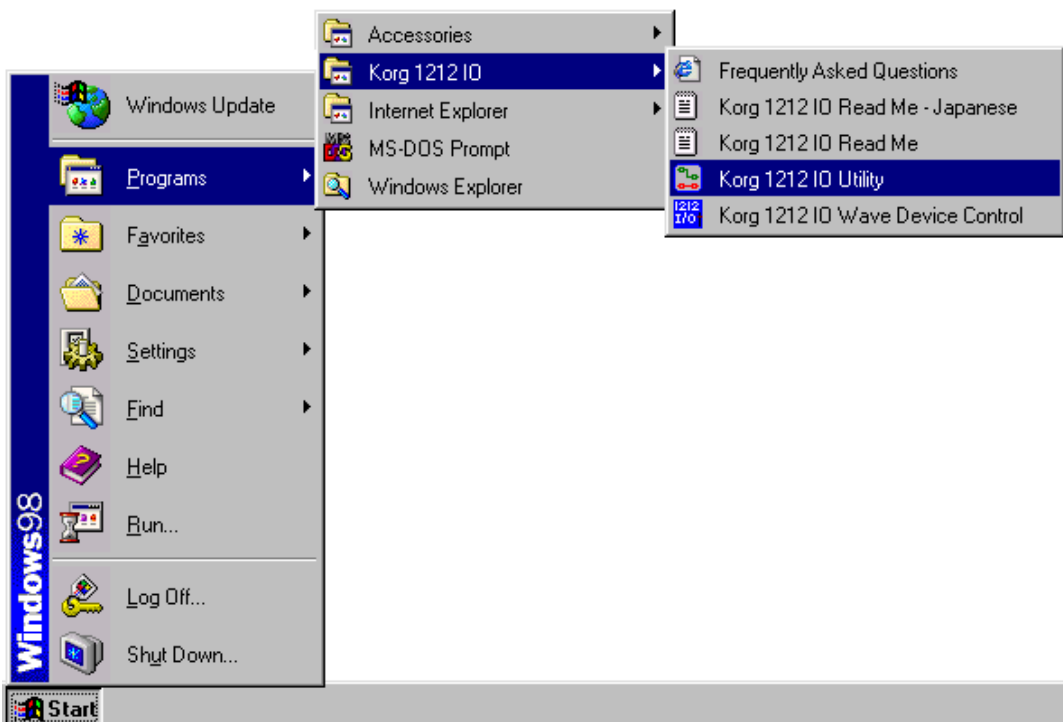
NOTE: If the S/PDIF input is not required, NOWHERE should be selected in the menu.

1212 CONFIGURATION

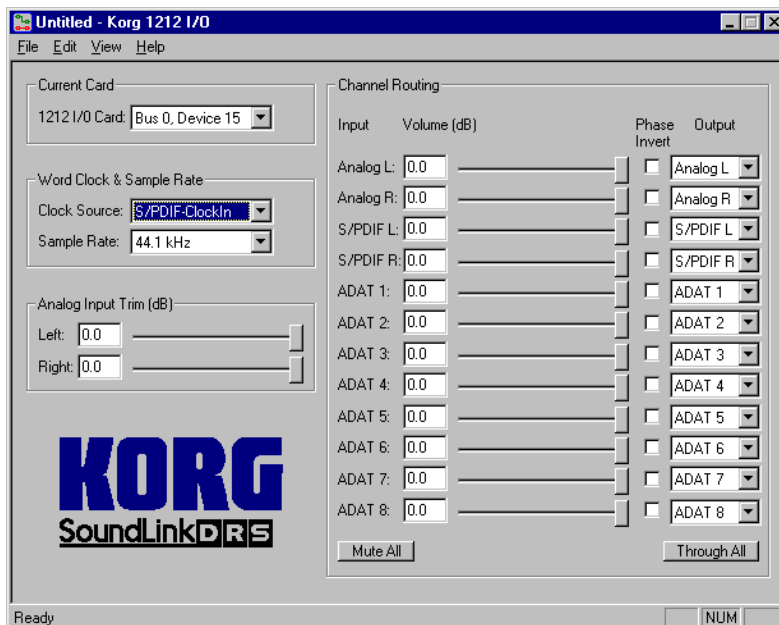
Wordclock

The 1212 must be set up to receive the wordclock transmitted by the 328XD (via the BNC connection).

Open the Korg 1212 Utility program, accessed via the Korg '1212 IO' program group on the taskbar:

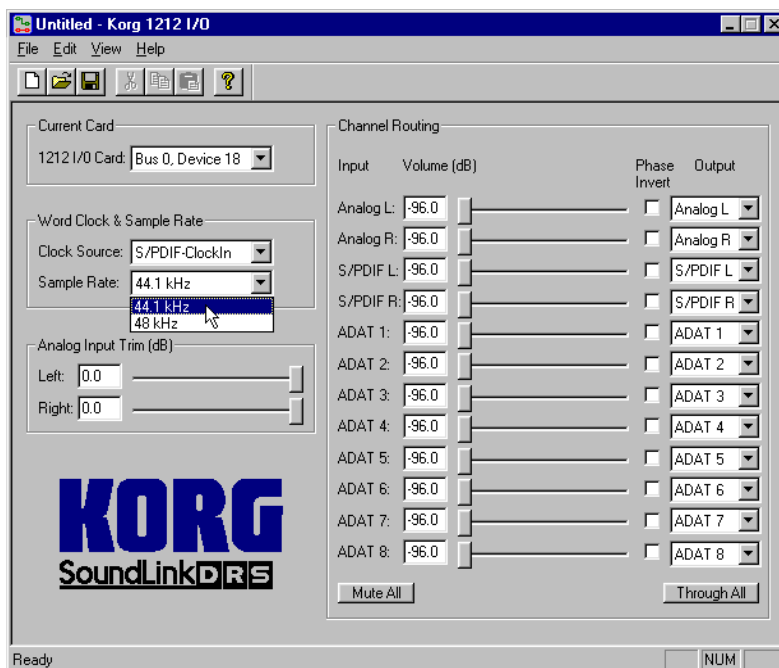


Click on the 'Clock Source' pull-down menu in the 'Word Clock & Sample Rate' section, and select 'S/PDIF-ClockIn'. This sets the 1212 to receive wordclock from its BNC input:



Sample Rate

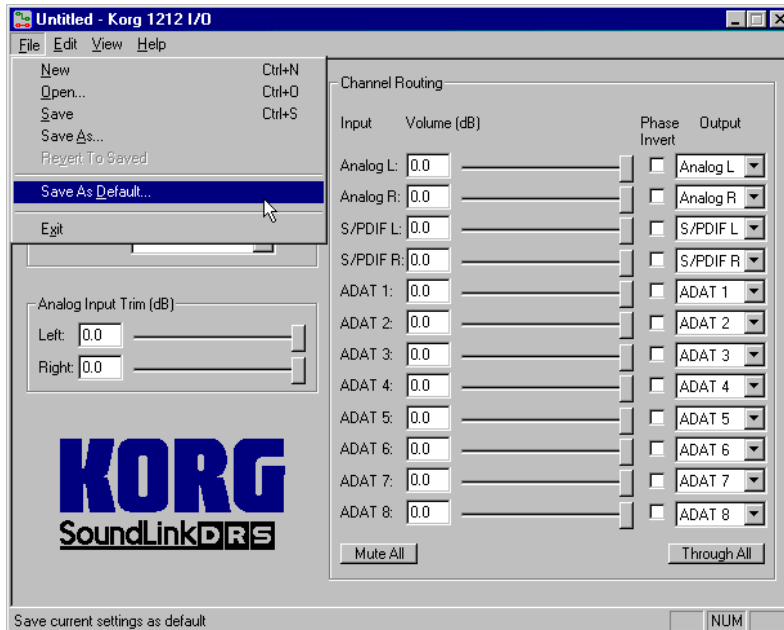
Now the 1212 must be configured to playback at the same sample rate as the 328. Click on the 'Sample Rate' pull-down menu in the 'Word Clock & Sample Rate' section. Here the sample rate which the 1212 plays back can be set between 44.1kHz and 48kHz:



This should be set to the same sample rate as the 328XD was set to in the 'Wordclock' section in chapter 2 of this manual. If the 328XD and 1212 are set to different sample rate settings, audio from the 1212 will play back at the incorrect speed.

Saving Settings

Now click on the 'File' drop-down menu, and click on 'Save as Default..':



Answer 'OK' to the window that follows, to confirm that you wish to save the current settings as the default settings.

Now, every time that Windows is loaded the Korg 1212 will be automatically set to receive wordclock from its BNC input, and play back at the desired sample rate.

USING THE 1212 WITH THE 328XD

Accessing the 1212 ADAT I/O from the 328XD

The 1212 will commonly be used with a software sequencer / hard disk recorder to allow play back and record 8 individual tracks of audio, via the ADAT I/O. Here, the software application must be configured to access the 1212 ADAT I/O via the relevant Windows device drivers that came with the 1212.

When playing back audio tracks from the software application, tracks 1-8 will be accessible from channels 17-24 respectively in 328XD BANK SELECT 17-32.

To record a signal onto a track within the software application, send the required channels to Digital Outputs 17-32. See the 328XD User Guide for full instructions on how to send a channel to a digital output channel.

NOTE: Ensure that the relevant Korg device drivers are fully installed for the software application to correctly access the 1212 ADAT I/O.

Accessing the 1212 S/PDIF I/O from the 328XD

You may wish to utilize the 1212 S/PDIF output to transmit a stereo signal to the 328XD. Again the software application must be configured to access the 1212 S/PDIF output via the relevant Windows device drivers supplied with the 1212.

The stereo 1212 S/PDIF input will be accessible on the 328XD from either

Stereo Input 1, Stereo Input 2, FX-1, FX-2, 2 Track Tape Return,

depending on the 328XD S/PDIF input setting (see the 'S/PDIF input' section in chapter 2 of this guide).

The 328XD can also be configured to transmit a stereo signal back to the 1212 via the 1212 S/PDIF input. Here the 328XD can be set to either transmit any of the following signals to the 1212 S/PDIF input:

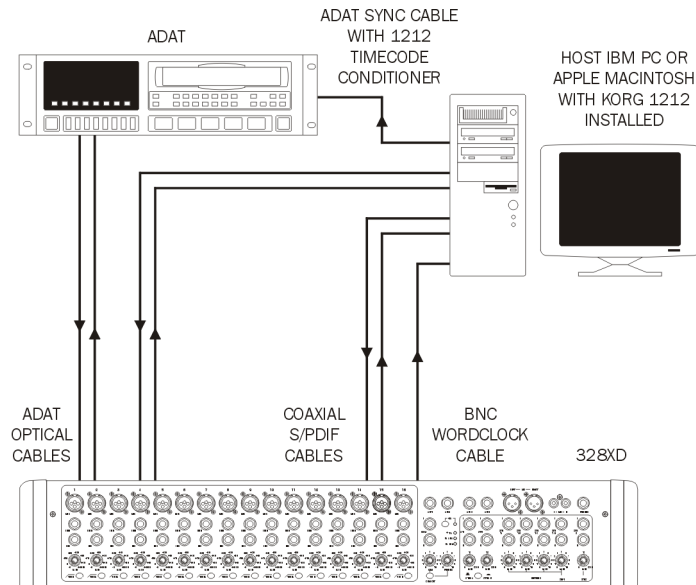
Aux 1/2 sends, Aux 3/4 sends, FX 1/2 dry sends, Groups 1-8 and Control Room

The desired setting can be configured via the 'S/PDIF O/P Setup' menu on the 328XD (see the 328XD User Guide for full instructions).

Again, ensure that the relevant Korg drivers are fully installed for the software application to correctly access the 1212 S/PDIF I/O.

ADDITIONAL INFORMATION

If used in conjunction with an ADAT, the system should be connected as follows:



SOUNDCRAFT

HARMAN INTERNATIONAL INDUSTRIES LTD
CRANBORNE HOUSE
CRANBORNE ROAD
POTTERS BAR
HERTS EN6 3JN UK
TEL: +44 (0) 1707 665000
FAX: +44 (0) 1707 660742
EMAIL: info@soundcraft.com

SOUNDCRAFT USA

1449 DONELSON PIKE
NASHVILLE TN 37217 USA
TEL: 1-615-360-0471
FAX: 1-615-360-0273
EMAIL: soundcraft-usa@harman.com

www.soundcraft.com

Free Manuals Download Website

<http://myh66.com>

<http://usermanuals.us>

<http://www.somanuals.com>

<http://www.4manuals.cc>

<http://www.manual-lib.com>

<http://www.404manual.com>

<http://www.luxmanual.com>

<http://aubethermostatmanual.com>

Golf course search by state

<http://golfingnear.com>

Email search by domain

<http://emailbydomain.com>

Auto manuals search

<http://auto.somanuals.com>

TV manuals search

<http://tv.somanuals.com>