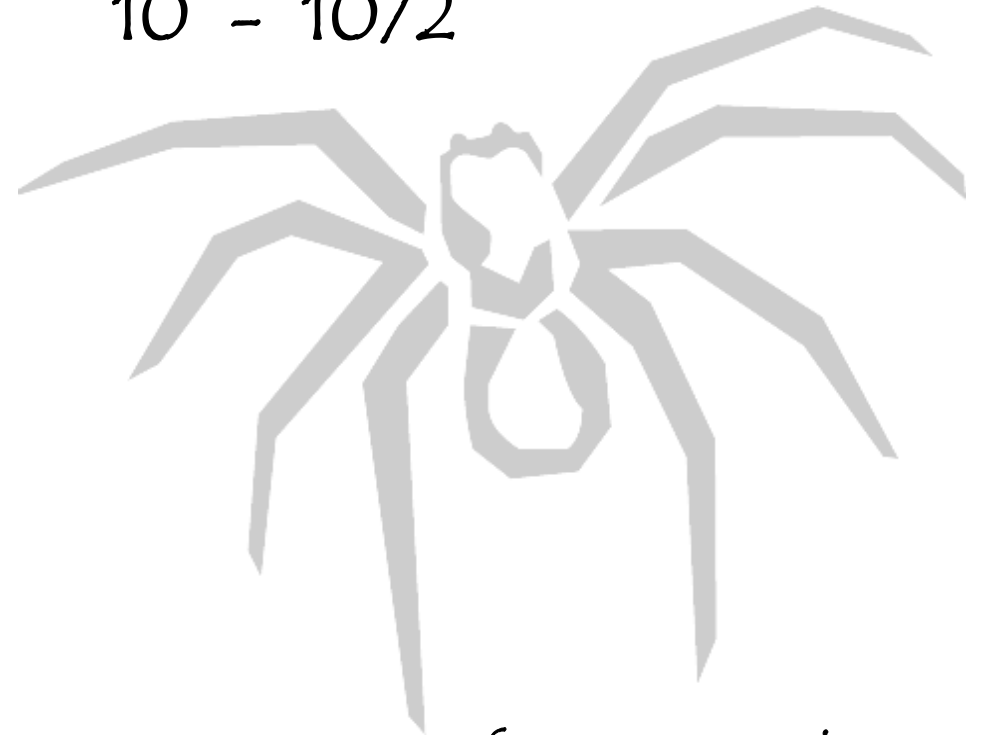


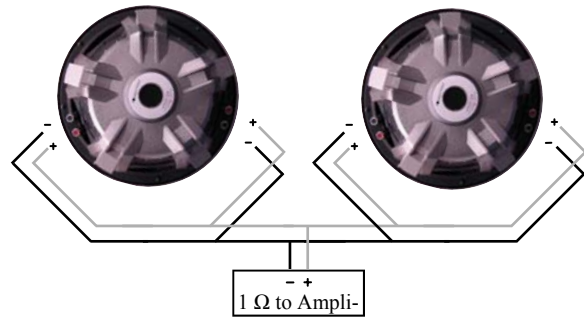
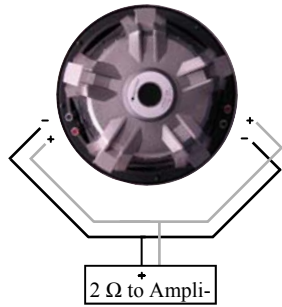
Picasso

PXW

10 - 10/2

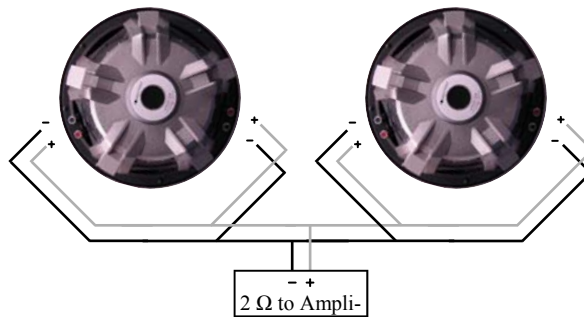
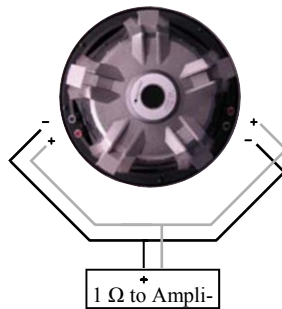


Specifications & Enclosure
Recommendations



PXW-10

PXW-10/2



Congratulations on your new Soundstream sub-woofer purchase. We greatly appreciate your business. This may look like a run-of-the-mill cardboard box, but it's actually a protective barrier over one of the finest engineered and assembled sub-woofers available.

Harmonic Indulgence... Listen and Feel

Features, Parameters, & Dimensions

Polypropylene Injection Molded Cone
NBR-Rubber Surround
8 ga. Compression Wire Terminal
Conex/Cotton Composite Spider

Texture Coat Finish
Stamped Steel Basket
Suspension Integrated Tinsel Leads
Vented Back Plate

Series wired	PXW-10	PXW-10/2
Fs (Hz)	33.53	31.27
Qms	7.265	6.847
Vas (ft ³)	1.355	1.376
Cms (mm/N)	0.248	0.252
Mms (g)	90.8	102.9
Rms (kg/s)	2.632	2.951
Xmax (mm)	11.10	11.50
Xmech (mm)	16.65	17.25
Piston Diameter (in)	8.069	8.069
Sd (in ²)	52.00	52.00
Qes	0.970	0.861
Re (Ω)	7.2	4.0
Z (Ω)	8	4
BL (Tm)	11.92	9.69
Rms Power (watts)	350	350
Qts	0.856	0.765
NO (%)	0.144	0.134
fw/1m SPL (dB)	83.61	83.28
2.8V SPL (dB)	84.19	86.43
Voice Coil Diameter (in)	2.00"	2.00"
Impedance (Ω)	DVC 4Ω	DVC 2Ω
M-vd (ft. ³)	0.100	0.100
Overall Diameter (in)	10.50"	10.50"
Overall Height (in)	6.375"	6.375"
Mounting Depth (in)	5.75"	5.75"
Cutout Diameter (in)	9.25"	9.25"
Flange Width (in)	.75"	.75"
Flange Height (in)	0.625"	0.625"
Weight (lbs)	8.5	8.5

Enclosure Dimensions

Soundstream does not provide enclosure dimensions as there are infinite variables when designing a box, i.e. vehicle, amplifier, music preferences, etc... For designs tailored to your specific needs, please contact us at tech-support@soundstream.com, or 1-800-724-1377.

Enclosure Construction

All enclosures should be made of .75" (3/4") material only. When possible, make the baffle 1.5" (1 1/2) thick and add .75" (3/4") to the depth of the enclosure to compensate. All volumes **INCLUDE** vent/port and subwoofer displacements. **DO NOT** change the volume unless you plan on adding a substantial amount of bracing. For added performance, applying a coat of fiberglass resin to the interior walls will greatly improve sealing the enclosure. Adding a thin layer of poly-fill will improve response by smoothing out reflections within the enclosure. Please see last page for woofer wiring diagrams.

Enclosure Recommendations

	PXW-10 Ported				PXW-10/2 Ported			
	Cubic Feet	Port Diameter	FB (Hz)	F3 (Hz)	Cubic Feet	Port Diameter	FB (Hz)	F3 (Hz)
Min.	1.25	3" x 12"	35.5	33.6	1.25	3" x 12"	35.5	32.3
Opt.	1.50	3" x 12"	32.0	30.3	1.50	3" x 12"	32.0	29.1
Max.	1.75	3" x 12"	29.4	27.9	1.75	3" x 12"	29.4	26.6

	PXW-10 Sealed			PXW-10/2 Sealed		
	Cubic Feet	Q T C	Tuning (Hz)	Cubic Feet	Q T C	Tuning (Hz)
Min.	0.75	1.379	41.9	0.75	1.249	40.3
Opt.	1.00	1.253	38.6	1.00	1.134	37.3
Max.	1.25	1.174	36.7	1.25	1.061	35.6

Free Manuals Download Website

<http://myh66.com>

<http://usermanuals.us>

<http://www.somanuals.com>

<http://www.4manuals.cc>

<http://www.manual-lib.com>

<http://www.404manual.com>

<http://www.luxmanual.com>

<http://aubethermostatmanual.com>

Golf course search by state

<http://golfingnear.com>

Email search by domain

<http://emailbydomain.com>

Auto manuals search

<http://auto.somanuals.com>

TV manuals search

<http://tv.somanuals.com>