

southbend

JOB _____ ITEM # _____

A MIDDLEBY COMPANY

TABLE KETTLE

Electric, Self-Contained, 2/3 Jacket, Tilting

MODEL:

20 Gallon (76 Liter)
KECT-20

Model KECT-20

OPTIONS:

- Lift-off cover
- Stainless steel basket
- Floor stands
- 1½" Drawoff
- Drawoff Strainer
- 220/380, 240/415 VAC, 3 Phase, 4 Wire
- 380, 415 or 480 VAC, 3 Phase, 50/60 Hz (Optional at extra cost)
- Strainer Hook
- Graduated Measuring Strip

- Water faucet – single pantry
- Water faucet – double pantry
- Tilt-brake

INQUIRE TO FACTORY FOR SPECIAL OR CUSTOM REQUIREMENTS.

We reserve the right to change specifications and product design without notice. Such revisions do not entitle the buyer to corresponding changes, improvements, additions or replacements for previously purchased equipment. Southbend has a policy of continuous product research and improvement.

Southbend Table Kettles offer unsurpassed versatility... rugged, dependable and are the most durable you can buy... up to 25% heavier than other competitive models, as proven by a comparison of shipping weights.

Assembly Structure

Each table electric tilting kettle liner is a one-piece welded construction made of type 316 stainless steel with #4 sanitary finish, 2/3 jacketed, and factory charged with water and anti-freeze. The kettle has a convenient pouring lip and a right side handle, which permits easy tilting. The kettle returns to an upright position when released and is fully serviceable in the field. The bottom of the kettle is hemispherical in design for superior heat distribution. The mounting base includes the kettle mounting lugs concealed inside a rectangular enclosure and a tilt mechanism housing of stainless steel.

Heating System

A.S.M.E. code stamped for operation up to 50 psi (3.8 kg/cm²), the kettle is electric, self-contained and factory charged with chemically pure water and anti-freeze. The kettle is then sealed at the factory. All kettles have removable elements which are replaceable in the field.

Control System

The control panel is located on the front right side of the unit, in full view of the operator, and is easy to use. Standard controls include pressure gauge, cooking light, low water light, built-in contactor, and thermostat which ranges from 100°F to 290°F.

Safety Features

Safety features include a low water cut off, and a pressure relief valve.

Technical Data

Unit dimensions, utility information, construction specifications and miscellaneous information is listed on the reverse side.

Warranty

One year Parts and Labor Warranty at no extra charge from the date of Purchase.



Made in Canada

1100 Old Honeycutt Road
Fuquay-Varina, NC 27526
(919) 552-9161
FAX (919) 552-9798
(800) 348-2558

KB-03B

MODELS:

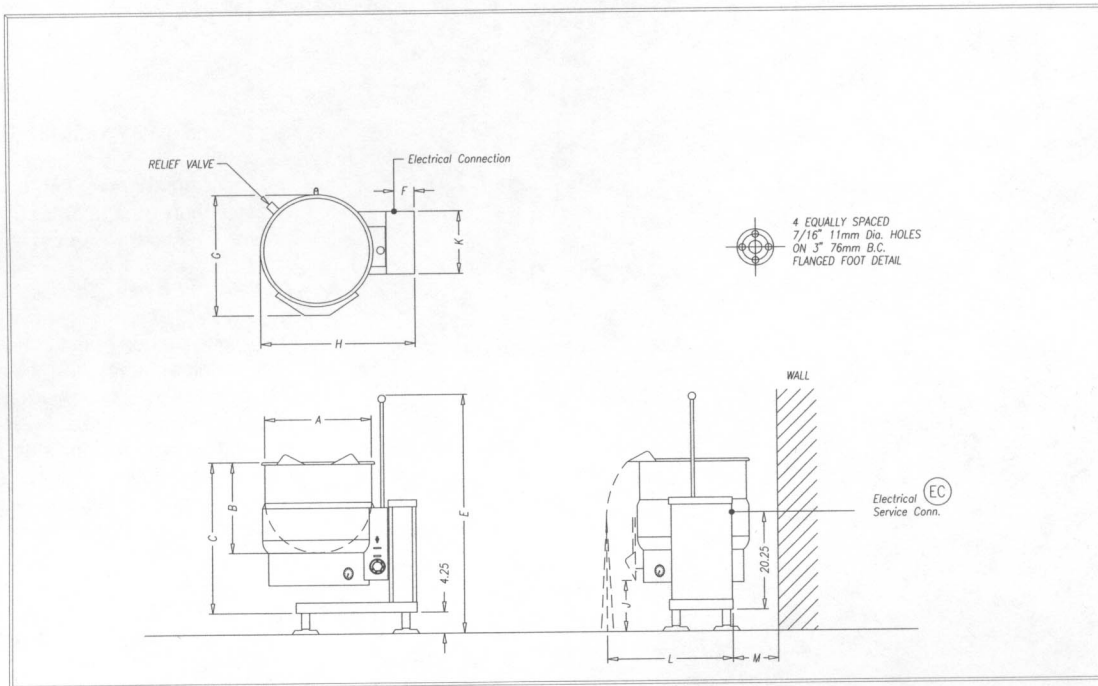
KECT-05F

KECT-10F

KECT-20F

DIMENSIONS

MODEL	CAPACITY	A	B	C	D	E	F	G	H	J	K	L	CUBIC	CRATED	
													VOLUME	WEIGHT	
KECT-20	20 gallons	inches	21	18	30.25	24	43.5	4	24	30.75	7	12.5	25	27 CU. FT.	210 LBS
	76 liters	mm	533	457	768	610	1105	102	610	781	178	318	635	.76 CU. M.	95.3 KG



ELECTRICAL CHARACTERISTICS

MODEL	PH	208V		230V		240V		380V		415V		480V	
		KW	AMP	KW	AMP	KW	AMP	KW	AMP	KW	AMP	KW	AMP
KECT-20	3	12	33.4	12	30.1	12	28.9	12	18.3	12	16.7	12	14.5
	1	12	57.6	15	52.2	15	50.0	-	-	-	-	-	-

CONSTRUCTION (BIDDING) SPECIFICATIONS:

Interior/Exterior: Kettle liner is one-piece welded construction made of type 316 stainless steel, with #4 sanitary finish. 2/3 Jacketed for even heat distribution; factory charged with water and anti-freeze. Kettle has convenient pouring lip and right side handle, which permits easy tilting. Kettle returns to upright position when released.

Steam/Heat Source: Electric, self-contained. A.S.M.E. code stamped for operation up to 50 P.S.I.

Capacity: KECT-20 is 20 gallons – 76 liters.

CONTROLS: Control panel located on front, right side of unit. Standard controls include:

- Thermostat (100°F to 290°F)
- Pressure Gauge
- Cooking Light
- Low-Water Light
- Built-in Contactor

Safety Features Include:

- Low Water Cut-off
- Pressure Relief Valve

MISCELLANEOUS INFORMATION:

Check local codes for installation and sanitary regulations.

INTENDED FOR COMMERCIAL USE ONLY. NOT FOR HOUSEHOLD USE.

Southbend, in line with its policy to continually improve its products, reserves the right to change materials or specifications without notice.



A MIDDLEBY COMPANY

Free Manuals Download Website

<http://myh66.com>

<http://usermanuals.us>

<http://www.somanuals.com>

<http://www.4manuals.cc>

<http://www.manual-lib.com>

<http://www.404manual.com>

<http://www.luxmanual.com>

<http://aubethermostatmanual.com>

Golf course search by state

<http://golfingnear.com>

Email search by domain

<http://emailbydomain.com>

Auto manuals search

<http://auto.somanuals.com>

TV manuals search

<http://tv.somanuals.com>