

QM95 Quick Measure Distance Meter

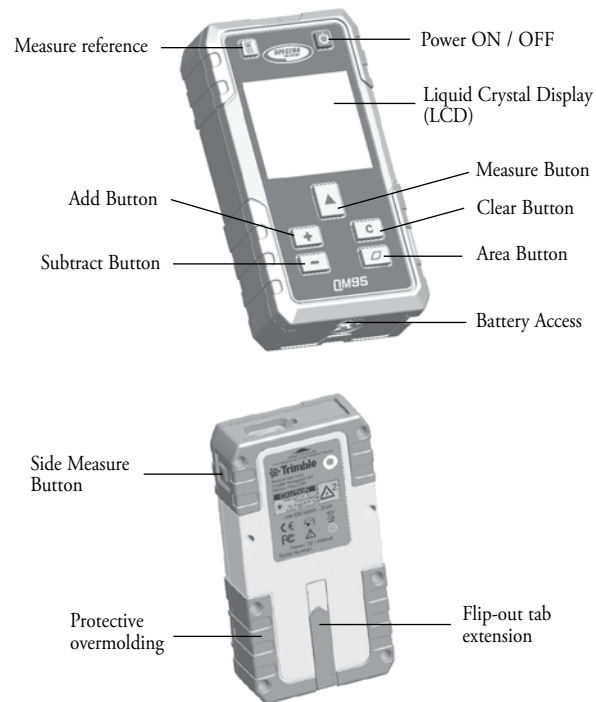
User Guide



Introduction

Thank you for choosing the Spectra Precision QM95 from the Trimble family of precision products. This easy-to-use distance measuring tool will allow you to measure distances quickly, accurately and reliably. Before using the Quick Measure, read this operator's manual carefully. Included is information about operation, safety and maintenance. Ensure that the operating instructions are with the laser distance meter when it is given to other persons. Your comments and suggestions are welcome; please contact us at:
 Trimble Spectra Precision Division
 8261 State Route 235
 Dayton, Ohio 45424 USA
 Phone: +1 (937) 203-4419
 +1 (800) 527-3771
 Fax: +1 (937) 482-0030
 Internet: www.trimble.com/spectra

Features



Included with the QM95: Pouch, unit, battery, user guide



Batteries - Installation

1. Open the battery compartment.
 2. Remove the batteries from the packaging and insert them in the tool.
- NOTE** When installing batteries note the positive (+) and negative (-) markings on the housings
3. Close the battery compartment cover.



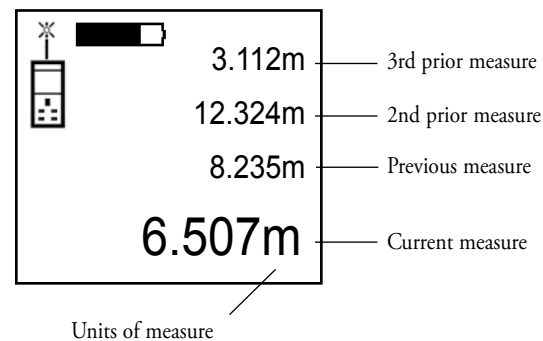
Battery disposal - Some areas have regulations regarding the disposal of batteries. Be sure to dispose of discharged batteries properly.
CAUTION: The batteries should be removed when storing the laser more than 30 days.

Quick Start Guide

| Unit OFF | Press | Press Time | Press 2 | Press Time | Press 3 | Press Time | Comment |
|--------------------------|-------|------------|---------|------------|---------|------------|------------------------|
| Single Measure | | Short | | Short | | | |
| Continuous Measure | | Long | | | | | Beeps if sound is on |
| Unit ON | | | | | | | |
| Change measure reference | | Short | | | | | Cycle front or back |
| Area | | Short | | Short | | Short | |
| Addition | | Short | | | | | Adds next measure |
| Subtraction | | Short | | | | | Subtracts next measure |
| Sound on / off | | Long | | | | | Cycle on / off |
| Units of measure change | | Long | | | | | Cycle through units |
| Clear previous action | | Short | | | | | Erase previous action |
| Power off | | Short | | | | | |

- 2 -

Features - LCD Detail



- 3 -

Features - LCD Detail

| Icon | Description |
|------|--|
| | Indicates laser is activated |
| | Indicates measure reference is from back |
| | Indicates measure reference is from front |
| | Automatic detection of tab extension and indicates measure reference is from extension |
| | More bars indicate more battery power remaining Flashing indicates it is time to change batteries |
| | Unfavorable signal conditions |
| | Hardware error. Switch unit on/off several time. If this symbol remains, contact your dealer |
| | Temperature too high or too low |

- 4 -

General Operation

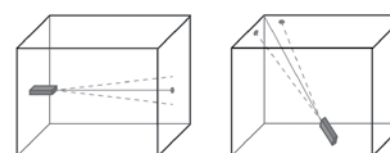
Single distance measurement

- 1) Switch on the laser beam by pressing the Measure Button.
- 2) Point the laser dot to the surface to be measured. (Default measure reference is from bottom of the tool).
- 3) Press the Measure Button once again. The measured distance will be displayed.
- 4) Press the Power On/Off Button to switch off.

Continuous measurement

- 1) Press and hold the Measure Button for 2 seconds to activate continuous measuring mode. The tool beeps during continuous measure mode if beeper is turned on.
- 2) Press the Measure Button again to stop continuous measure. When continuous measure is stopped, the last valid distance measurement is displayed on the result line.

Continuous measure can be useful to find the shortest distance to a wall or longest distance to a corner as shown.

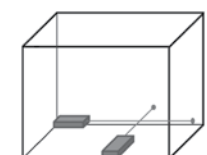


Power on/off options

- 1) The Quick Measure is designed to allow quick measurements by pressing the Measure Button to switch on the tool and activate the laser. In this case, measurement is accomplished when the Measure Button is pressed the second time.
- 2) It is also possible to use the power button to switch on the tool. In this case, the Measure Button must be pressed once to activate the laser and a second time to accomplish a measurement.

Area

- 1) Press the measure button to turn on the unit (or the Clear button to clear)
- 2) Press the Area button
- 3) Press the Measure button to measure the first side as shown on the LCD screen
- 4) Press the Measure button to measure the second side as shown on the LCD screen. The Area will be shown, along with both measures.



General Operation

Addition and Subtraction

+ The next measure is added to the previous one

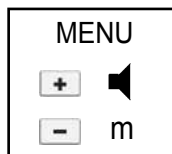
- The next measure is subtracted from the previous one

Clear button

Press the C button to clear the last reading. During area measures, the C button clears the most recent measure, but preserves previous measures.

Settings menu (to change sound and unit of measure)

1) With the tool switched off, press and hold the Power On/Off Button for approximately 2 seconds to enter menu mode.



2) Press + to cycle sound on or off

3) Press the - button to cycle through unit measure options:

| | | | |
|----|--------|---------|---------|
| m | cm | mm | |
| in | 1/8 in | 1/16 in | 1/32 in |
| ft | 1/8 ft | 1/16 ft | 1/32 ft |
| yd | | | |

4) To close the menu, press and hold the Power On/Off Button for approximately 2 seconds. The tool is switched off and settings are saved.

Specifications

| | |
|-------------------------|---|
| Measuring Range* | 0.1 to 200 m (1 to 650 ft) |
| Accuracy | ± 1.0 mm typical (± 1/24 in) |
| Functions | Individual measure, Continuous measure Area, Addition, Subtraction |
| Measure reference | Front, Rear, Rear with Extension tab |
| Automatic shut off | Laser - 1 minutes / Product - 10 minutes |
| Battery life (alkaline) | 8000 measures |
| Operating temperature | -15°C to +50°C (3°F to 122°F) |
| Storage temperature | -25°C to +65°C (-13°F to 149°F) |
| Power supply | 2 x AA x 1.5V |
| Power indication | LCD 4 segments - 100%, 75% 50%, 25% |
| Laser Safety | Class II as per EN 60825-1:2007; IEC 60825-1:2007 CFR 21 § 1040 (FDA) |
| Laser Type / Power | 635 nm visible red / < 1.0 mW |
| Dimensions | 62 x 28.5 x 120 mm (2.4" x 1.2" x 4.7") |
| Weight | 217 g (7.7 oz) with batteries |
| Dust & Water resistance | IP54 |
| Drop Performance | 1.5 m (5 ft) |

* Dependent upon several factors. See table next page

Measurement range:

Distance performance and measure speed is dependent upon several factors:

- Ambient lighting
- Target reflectivity
- Dust and particles in the air
- Temperature

| Measurement range on standard target | Albedo | Temp. | Light | Range |
|--------------------------------------|--------|----------------|-----------|---------------|
| >5 | | -10°C to +50°C | <1000 lx | 0.17 to 200 m |
| 1 | | +10°C to +35°C | <1000 lx | 0.17 to 120 m |
| 0.2 | | +10°C to +35°C | <1000 lx | 0.17 to 55 m |
| 0.2 | | -10°C to +50°C | <1000 lx | 0.17 to 50 m |
| 1 | | +10°C to +35°C | 100000 lx | 0.17 to 50 m |
| 0.2 | | +10°C to +35°C | 100000 lx | 0.17 to 50 m |
| 1 | | -10°C to +50°C | 100000 lx | 0.17 to 45 m |
| 0.2 | | -10°C to +50°C | 100000 lx | 0.17 to 45 m |
| Minimum measuring distance | | | | 170 mm |
| Clearness | | | | >300 m |

- 13 -

General Care, Safety And Storage

General safety rules

- Check the condition of the tool before use.
- The user must check the accuracy of the tool after it has been dropped or subjected to other mechanical stresses.
- Although the tool is designed for the tough conditions of jobsite use, as with other measuring instruments it should be treated with care.

Do not use prisms or mirrored surfaces

Distances can be measured from all stationary targets without a highly reflective surface, i.e. concrete, stone, wood, plastic, paper, etc. The use of prisms or other highly reflective targets is not permissible and, if attempted, may falsify the results.

Calibration Check

It is recommended to occasionally check the calibration of the tool.

1) Select a known measure distance about 1 to 5 meters (3 to 15 ft) that does not change over time.

2.) Measure the distance 10 times. Calculate the mean deviation from the actual distance. The measured mean deviation should be less than the typical accuracy tolerance of ± 1.5 mm (± 1/16 in)

- 17 -

Laser Safety

Use of this product by people other than those trained on this product may result in exposure to hazardous laser light.

- Do not remove warning labels from the unit.
- The QM95 is a Class 2M (635 nm) laser product .
- Never look into the laser beam or direct it to the eyes of other people.
- Always operate the unit in a way that prevents the beam from getting into people's eyes.



- 21 -

Cleaning and drying

- Blow dust off the lens.
- Do not touch the lens with the fingers.
- Use only a clean, soft cloth for cleaning. If necessary, moisten the cloth slightly with pure alcohol or a little water.

NOTE Do not use any other liquids as these may damage the plastic components.

Storage

The temperature limits for storage of your equipment must be observed, especially in winter / summer.

Remove the tool from its pouch if it has become wet. The tool, its carrying case and accessories should be cleaned and dried (at maximum 40°C). Repack the equipment only once it is completely dry. Check the accuracy of the equipment before it is used after a long period of storage or transportation.

Transport

Use the original packaging or packaging of equivalent quality for transporting or shipping your equipment.

CAUTION

Always remove the batteries before shipping the tool.

- 14 -

Warranty

Trimble warrants the Quick Measure QM95 to be free of defects in material and workmanship for a period of 3 years. For the first 2 years, Trimble or its authorized Dealer or Service Center will repair or replace, at its option, any defective part, or the entire product, for which notice has been given during the warranty period. For the 3rd year, an exchange fee may apply. This warranty period is in effect from the date the system is delivered by Trimble or its authorized Dealer to the purchaser, or is put into service by a Dealer as a demonstrator or rental component.

Any evidence of negligent or abnormal use, or any attempt to repair equipment by other than factory-authorized personnel or Trimble certified or recommended parts, automatically voids the warranty.

The foregoing states the entire liability of Trimble regarding the purchase and use of its equipment. Trimble will not be held responsible for any consequential loss or damage of any kind.

This warranty is in lieu of all other warranties, except as set forth above, including an implied warranty. Merchantability of fitness for a particular purpose is hereby disclaimed.

Customers should send products to the nearest authorized Factory, Dealer or Service Center for warranty repairs, freight prepaid. In countries with Trimble Service Subsidiary Centers, the repaired products will be returned to the customer, freight prepaid.

- 22 - Download from Www.Somanuals.com. All Manuals Search And Download. - 23 -

Trouble Shooting

| Fault | Possible cause | Remedy |
|---|--|---|
| The unit can't be switched on. | The batteries are exhausted. | Replace the batteries. |
| | Incorrect battery polarity. | Insert the batteries correctly and close the battery compartment cover. |
| | The button is faulty. | Contact Service |
| No distances displayed by the unit. | Measure Button was not pressed. | Press the Measure Button. |
| | Unit was not switched on | Press the Measure Button. |
| | Faulty display. | Contact Service |
| Frequent error messages or the unit doesn't measure. | The target surface is too brightly lit by the sun. | Measure from the other direction – sun from behind. |
| | The target surface is too shiny. | Take measurements from less shiny surfaces. |
| | The target surface is too dark. | Use a lighter colored surface |
| | Bright sunlight towards the tool. | Shade the unit. |
| Temperature indicator - symbol in the display | Temperature too high (>+50 °C / 122 °F) | Allow the unit to cool down. |
| | Temperature too low (<-10 °C / 14 °F) | Allow the unit to warm up. |
| Unfavorable signal conditions - symbol in the display | Insufficient reflected laser light. | Observe the minimum measuring distance (>200 mm / 8 inch from the front edge of the unit); clean the lenses; take the measurement from a different surface or use a target plate. |
| General hardware fault - symbol in the display | Hardware fault | Switch the unit off and on again. |

- 19 -

Service Request

To locate your local dealer or authorized Trimble Service Center outside the U.S.A. for service, accessories, or spare parts, contact one of our offices listed below.

North-Latin America
Trimble / Spectra Precision Division
8261 State Route 235
Dayton, Ohio 45424-6383
U.S.A.
(888) 527-3771
(Toll Free in U.S.A.)
+1-937-203-4419 Phone
+1-937-482-0030 Fax
www.trimble.com/spectra

Europe
Trimble Kaiserslautern GmbH
Am Sportplatz 5
67661 Kaiserslautern
GERMANY
Tel +49-(0)6301-71 14 14
Fax +49-06301-32213
Africa & Middle East
Trimble Export Middle-East
P.O. Box 17760
JAFZ View, Dubai
UAE
+971-4-881-3005 Phone
+971-4-881-3007 Fax

Asia-Pacific
Trimble Navigation Singapore PTE Ltd.
80 Marine Parade Road, #22-06
Parkway Parade
Singapore, 449269
+65 6348 2212 Phone
+65 6348 2232 Fax

China
Trimble Beijing
Room 2805-07, Tengda Plaza,
No. 168 Xiwai Street
Haidian District
Beijing, China 100044
+86 10 8857 7575 Phone
+86 10 8857 7161 Fax
www.trimble.com.cn

Declarations

We declare, on our sole responsibility, that this product complies with the following directives and standards:

EN 50081-1, EN 61000-6-2, 2004/108/EC.

Designation: Laser range meter

Type: QM95

Notice to Our European Union Customers

For product recycling instructions and more information, please go to: www.trimble.com/environment/summary.html

Recycling in Europe

To recycle Trimble WEEE, call: +31 497 53 2430, and ask for the "WEEE associate," or mail a request for recycling instructions to:
Trimble Europe BV
c/o Menlo Worldwide Logistics
Meerheide 45
5521 DZ Eersel, NL



Free Manuals Download Website

<http://myh66.com>

<http://usermanuals.us>

<http://www.somanuals.com>

<http://www.4manuals.cc>

<http://www.manual-lib.com>

<http://www.404manual.com>

<http://www.luxmanual.com>

<http://aubethermostatmanual.com>

Golf course search by state

<http://golfingnear.com>

Email search by domain

<http://emailbydomain.com>

Auto manuals search

<http://auto.somanuals.com>

TV manuals search

<http://tv.somanuals.com>