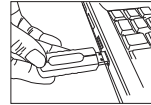


**Wireless Optical Mouse
KT4092**

1.Connecting with Computer:

The first time you take out this mouse and receiver from the packing, factory preset ID enables Plug and Play function.

Plug the Receiver into PC USB Port.Under Win2000 or higher, wait for the OS to detect the RF device.Under Win98, installation of driver for the device is necessary.



Insert the batteries into the mouse and move it for a while, to start working.



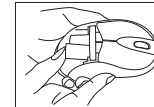
Note : If YOU need to use with the Win98 system, please install the former win98 system with the USB driver .

2.Inserting Batteries:

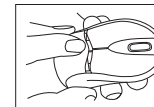
A.Push the battery compartment cover backwards and open it.



B.Insert 2 x 'AA' batteries (not included) into the compartment with correct position.



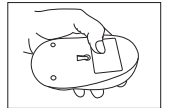
C.Slide the battery cover into the compartment and close the cover.



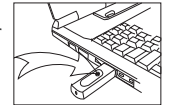
3.The wireless connection channel:

When Factory ID has been changed or you wish to changed it, link ID as below.

A.Press the ID button on the bottom of the mouse.



B.Press the ID button on the top of the receiver, if the LED starts blinking faster. ID linked.



C.If the mouse still doesn't work after above process, please repeat this procedure again after 15 seconds.

4.Power Saving Mode:

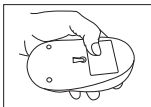
A.Suspend Mode:

Keep mouse stationary for 10 minutes, mouse will be automatically set to Suspend Mode. Press left button to wake up the mouse again.

B.Power Off Mode:

When you wish to set the mouse to power off mode, press mouse ID for 3 seconds.

The Optical LED will flash once and then fade out showing Mouse power is off.Press ID switch for turning on again.



Note: After power on again, may need ID link process to wake up.

5.Trouble Shooting:

- A.When mouse doesn't respond, check the battery power status, and link ID if necessary.
- B.Check the battery pole if the optical LED is still off after inserting batteries.
- C.Ask for maintenance solution from your retailer and engineer. Personally taking unit apart is prohibited after trouble occurs and may void warranty.

WARNING:

- Be sure that the batteries are installed correctly. Wrong polarity may damage the unit.
- Do not mix alkaline, standard (carbon-zinc) or rechargeable (nickel-cadmium) batteries.
- Only batteries of the same or equivalent type as recommend are to be used.
- Do not mix old and new batteries.
- Only adults should replace batteries.
- If the unit is not to be used for an extended period of time, remove the battery.
- Replace the batteries when the unit stops operating properly.
- Do not dispose of batteries in fire, batteries may explode or leak.

6.Specification:

Carrier frequency: 27.045MHz
RF output power: -4dBm
Power requirement: 2 x 1.5V 'AA' (UM-3) batteries
FCC ID:HQXAXM-105A

COMPLIANCE WITH FCC REGULATIONS

This device complies with Part 15 of the FCC Rules. Operation is subject to the following two conditions: (1) This device may not cause harmful interference, and (2) this device must accept any interference received, including interference that may cause undesired operation. In accordance with FCC requirements, changes or modifications to this unit not expressly approved by the party responsible for compliance could void the user's authority to operate the equipment.

NOTE:

This equipment has been tested and found to comply with the limits for a Class B Digital Device, pursuant to Part 15 of the FCC Rules. These limits are designed to provide reasonable protection against harmful interference in a residential installation. This equipment generates, uses and can radiate radio frequency energy and, if not installed and used in accordance with the instructions, may cause harmful interference to radio communications. However, there is no guarantee that interference will not occur in a particular installation. If this equipment does cause harmful interference to radio or television reception,which can be determined by turning the equipment off and on, the user

is encouraged to try to correct the interference by one or more of the following measures:

- Reorient or relocate the receiving antenna.
- Increase the separation between the equipment and receiver.
- Connect the equipment into an outlet on a circuit different from that to which the receiver is connected.
- Consult the dealer or an experienced radio/TV technician for assistance.

SERVICE

Please refer to the instructions on the enclosed warranty card for returning your unit for service. When returning the unit, please remove batteries to prevent damage to the unit in transit and/or from possible leakage. We are not responsible for batteries returned with the product or for the cost of replacement.

Distributed by:
SPECTRA Merchandising International, Inc.
Chicago Industry Tech Park
4230 North Normandy Avenue
Chicago, IL 60634, U.S.A.

Please have model number ready, for Customer Service, call 1-800-777-5331.

The specification and external appearance of the set are subject to change without prior notice.

Free Manuals Download Website

<http://myh66.com>

<http://usermanuals.us>

<http://www.somanuals.com>

<http://www.4manuals.cc>

<http://www.manual-lib.com>

<http://www.404manual.com>

<http://www.luxmanual.com>

<http://aubethermostatmanual.com>

Golf course search by state

<http://golfingnear.com>

Email search by domain

<http://emailbydomain.com>

Auto manuals search

<http://auto.somanuals.com>

TV manuals search

<http://tv.somanuals.com>