

COIN & CARD-OPERATED SOFTMOUNT WASHER-EXTRACTORS

18 lb (8 kg)
30 lb (14 kg)



Speed Queen®

BUILT BETTER TO LAST LONGER

WASHER-EXTRACTOR SPECIFICATIONS

COMMERCIAL QUALITY

As the No.1 supplier of commercial coin-operated laundry equipment, Speed Queen continues to lead in customer satisfaction with its top-of-the-line commercial laundry equipment. Manufactured with quality components, Speed Queen coin-operated washers and dryers are durable, rugged and built better to last longer.

Variable Speed Drive

Since all fabrics have different extract speed requirements, our line of softmount washer-extractors have variable extract speeds. A low extract speed is ideal for synthetics, permanent press and blends. A mid-range extract speed is ideal for mattress pads, blankets and spreads. A high extract speed is ideal for terry and cotton items.

A higher G-Force during extraction lowers the water retention of the fabrics being processed. Lower water retention also reduces the gas or electricity used during the drying process, saving money on utilities and improving customer turnover.

Easy Installation

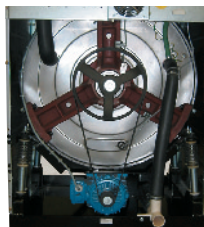
Speed Queen's 18 lb and 30 lb capacity softmount washer-extractors fit through 36" door openings. Softmount washer-extractors require no additional cement base, making installation easier and less costly.



www.speedqueen.com

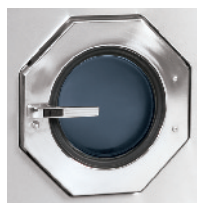
Superior Performance Suspension

Extensive engineering efforts have developed a heavy-duty suspension system designed for superior washing performance and absorb out-of-balance load vibrations without the need for special foundations.



Stainless Steel Construction

Durable 304 polished stainless steel construction on the washer-extractors won't corrode, chip, crack or pit with normal use, and is extremely rust resistant. In fact, the polished stainless exterior, top and front panels will maintain their lustrous appearance for years to come.



Fully Programmable Control

Our advanced microprocessor control is designed to offer eight pre-programmed cycles. These cycles can be customized to fit your specific needs. Customized cycles can significantly reduce water consumption or reduce turnaround time by doing the maximum amount of cleaning in the shortest amount of time. The micro control is easy to operate utilizing a separate start pad and cycle symbols designed to match garment care labels.



	NX18	NX30
Capacity - lb (kg)	18 (8)	30 (14)
Width - in (mm)	26" (660)	30 3/4" (780)
Depth - in (mm)	29 1/8" (739)	33 1/8" (842)
Height - in (mm)	40 7/8" (1038)	47 3/8" (1202)
Cylinder Diameter - in (mm)	20 7/8" (530)	25 5/8" (650)
Cylinder Depth - in (mm)	13" (330)	15 3/4" (400)
Cylinder Volume - cu. ft. (liters)	2.7 (76)	5.9 (132)
Door Opening Size - in (mm)	11 7/8" (300)	11 7/8" (300)
Door Bottom to Floor - in (mm)	11" (280)	15" (381)
Wash Speed - RPM	10-50	10-50
Distribution Speed - RPM	85	85
Extract Speed - RPM	250-1000	100-1000
G-Force Factor - RPM	74-296	88-363
Water Inlet Conn. - in (mm)	3 x 3/4" (19)	3 x 3/4" (19)
Drain Connection Size - in (mm)	2" (51)	2" (51)
Motor Size - HP (kw)	1 (.75)	2 (1.5)
Voltage/Hz/Phase Non-heat Circuit Breaker	200-240/50-60 1 15	200-240/50-60 1 15
Voltage/Hz/Phase* Elect. heat Circuit Breaker	200-240/50-60/3 25	200-240/50-60/3 50
Voltage/Hz/Phase Elect. heat Circuit Breaker	380-415/50-60/3 16	380-415/50-60/3 32
Shipping Dimensions - in (mm)	H 44 7/8" (1140)	51 5/8" (1310)
	W 29 1/8" (740)	33 1/2" (850)
	D 33 1/8" (840)	37" (940)
Net Weight - lb (kg)	465 (211)	717 (325)
Shipping Weight - lb (kg)	514 (233)	783 (355)
Agency Approvals	CE, ETL	CE, ETL

* Special order may require longer time, check with factory.

Due to the continuous product improvements, design and specifications subject to change without notice.

©Copyright 2005 Alliance Laundry Systems LLC



Free Manuals Download Website

<http://myh66.com>

<http://usermanuals.us>

<http://www.somanuals.com>

<http://www.4manuals.cc>

<http://www.manual-lib.com>

<http://www.404manual.com>

<http://www.luxmanual.com>

<http://aubethermostatmanual.com>

Golf course search by state

<http://golfingnear.com>

Email search by domain

<http://emailbydomain.com>

Auto manuals search

<http://auto.somanuals.com>

TV manuals search

<http://tv.somanuals.com>