



Scramble the Air Hogs™ RC F-16 Falcon™ in park sorties to protect the skies. The Air Hogs™ RC F-16 Falcon™ is a fully licensed Fighter Jet from Lockheed Martin. Follow these instructions to quickly develop your pilot skills to become a Fighter Ace that dominates the skies. ADULT SUPERVISION RECOMMENDED.

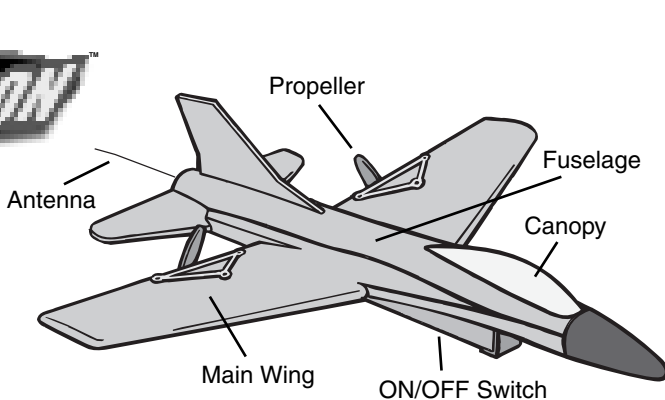
PLEASE READ THESE INSTRUCTIONS BEFORE FLYING!



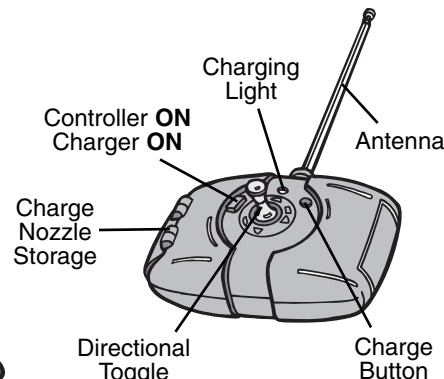
INSTRUCTIONS

Check to make sure contents are complete:

- 1 Air Hogs™ RC F-16 Falcon™
- 1 Charger/Flight Controller
- 1 Decal Sheet



F-16 FALCON™

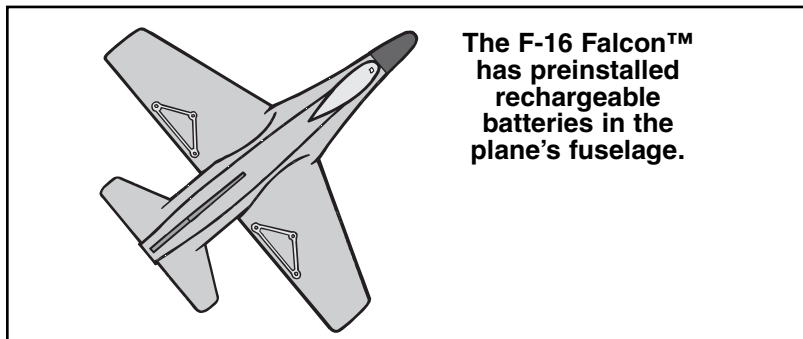


CHARGER/FLIGHT CONTROLLER

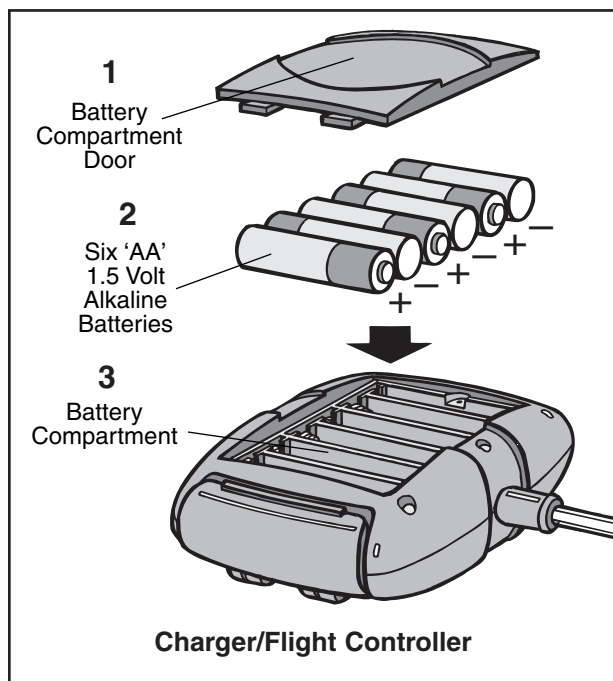
BATTERY INSTALLATION

1. Use a Phillips screwdriver to unscrew the battery compartment door.
2. Install **six AA 1.5 Volt alkaline batteries** (not included) as shown. Be careful to align the positive (+) and negative (-) polarities with the corresponding markings inside the battery compartment.
3. Replace the battery compartment door and re-tighten the screw.

IMPORTANT TIP: TURN YOUR CONTROLLER ON TO ENSURE THAT THE BATTERIES ARE INSTALLED PROPERLY. THE RED LIGHT ON THE FRONT OF THE CONTROLLER SHOULD TURN RED.



The F-16 Falcon™ has preinstalled rechargeable batteries in the plane's fuselage.



Charger/Flight Controller

IMPORTANT BATTERY INFORMATION

REQUIRED BATTERIES: Plane includes rechargeable battery pack. Charger/Flight Controller takes six 'AA' 1.5 Volt batteries (not included).

Battery installation should be performed by an adult. Use only batteries recommended in the instruction sheet. Be careful to install the batteries with the correct polarity, as indicated.

- Do not mix old and new batteries.
- Do not mix alkaline, standard or rechargeable batteries.
- Battery installation should be done by an adult.
- Non-rechargeable batteries are not to be recharged.
- Rechargeable batteries are to be removed from the toy before being charged (if removable).
- Rechargeable batteries are only to be charged under adult supervision (if removable).

- Only batteries of the same or equivalent type as recommended are to be used.
- Batteries are to be inserted with the correct polarity.
- Exhausted batteries are to be removed from the toy.
- The supply terminals are not to be short-circuited.
- Different types of batteries, or new and used batteries are not to be mixed
- Exhausted batteries are to be removed, as they will adversely affect the performance.

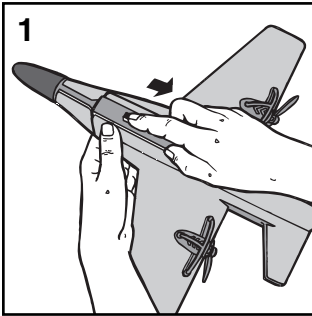
CAUTION: Plane contains rechargeable cells(s). If fluid leaks from plane avoid contact with eyes and dispose of plane.

ONLY USE DOCKING STATION CHARGER SUPPLIED WITH THE AIR HOGS™ RC F-16 FALCON™. DO NOT USE ANY OTHER SOURCE TO CHARGE THE AIR HOGS™ RC F-16 FALCON™.

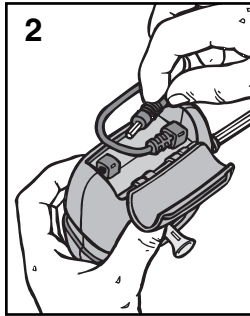
CHARGING YOUR AIRPLANE

IMPORTANT CHARGING INFORMATION: Charge the plane's internal batteries for 4 minutes. **Note:** If you notice your flight time decreasing over time, you may increase the charge time up to 8 minutes for better performance. Never charge more than 8 minutes or you may burn out the batteries.

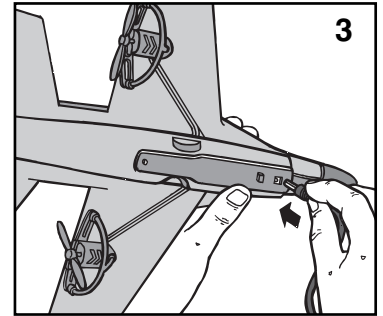
1. Push the planes ON/OFF switch to **OFF**.



2. Open the charge nozzle access door and remove the charge nozzle.

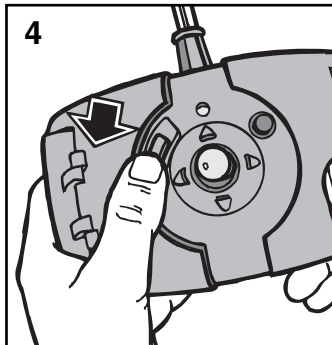


3. Insert the charge nozzle all the way into the planes charger port.

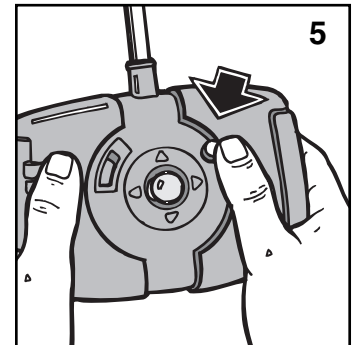


NOTE: If controller is in **ON** position with plane on charger the LED will be off to tell user nothing is happening.

4. Turn controller **OFF**, charger **ON**.

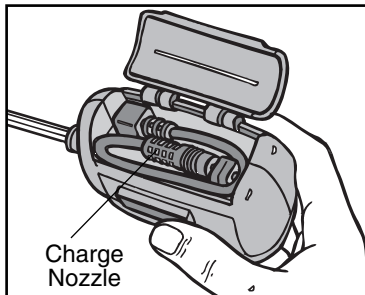


5. The red light will blink to indicate charging is occurring. When the red light stops blinking, the plane is fully charged.



STORING CHARGE NOZZLE

When finished charging the plane, store the charge nozzle as shown.

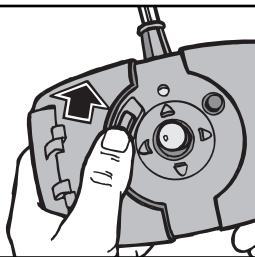


PRE-FLIGHT ENVIRONMENT CHECK

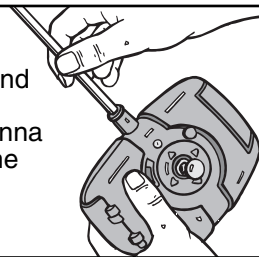
1. **Location** – Always fly your F-16 Falcon™ in a wide open grassy area that is free of buildings, trees, overhead wires, and other obstructions. Do not fly near people or animals.
2. **Weather** – Do not fly your plane if the temperature is less than 45°F/7°C or above 104°F/40°C.
3. **Wind Conditions** – Avoid flying your plane in windy conditions, because winds may overpower the plane and make it difficult to control.

FLYING INSTRUCTIONS

1 Move the ON/OFF switch on the charger/flight controller to the **ON** position.

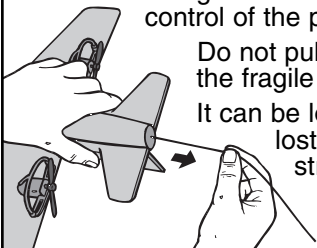


2 Extend the antenna all the way.

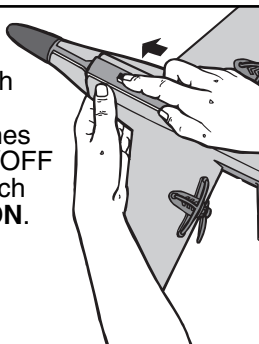


3 Uncoil the plane's antenna. Ensure that the antenna is straight to have the optimal control of the plane.

Do not pull or yank on the fragile antenna. It can be loosened or lost by using strong force.



4 Push the planes ON/OFF switch to **ON**.



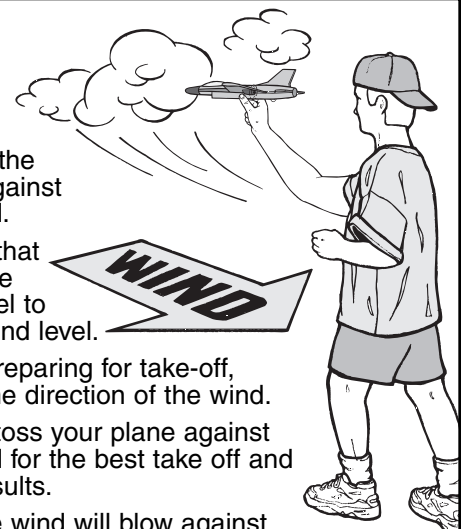
5 Launch the plane against the wind.

Ensure that the plane is parallel to the ground level.

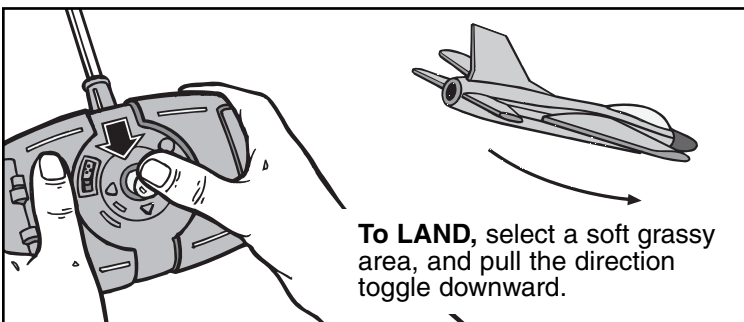
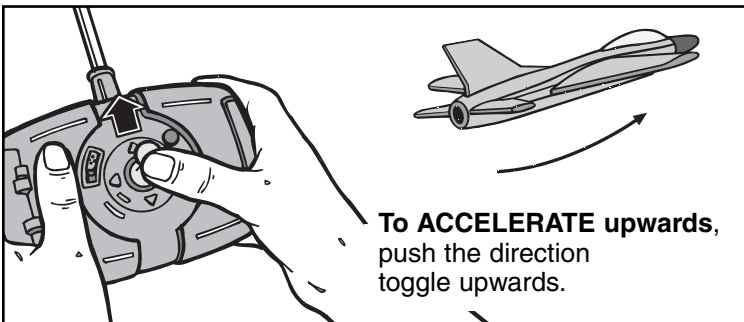
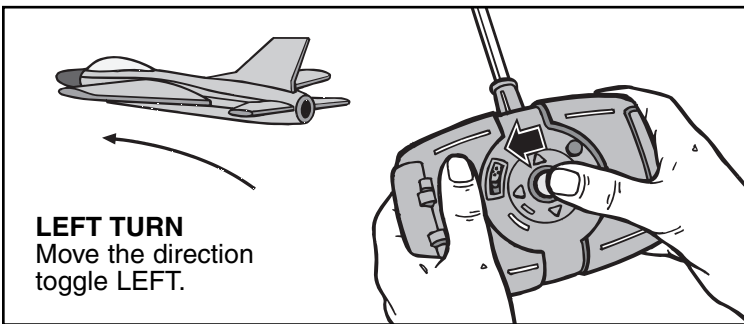
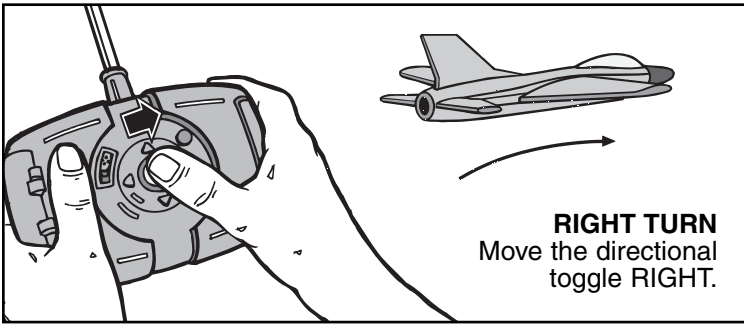
When preparing for take-off, check the direction of the wind.

Always toss your plane against the wind for the best take off and flight results.

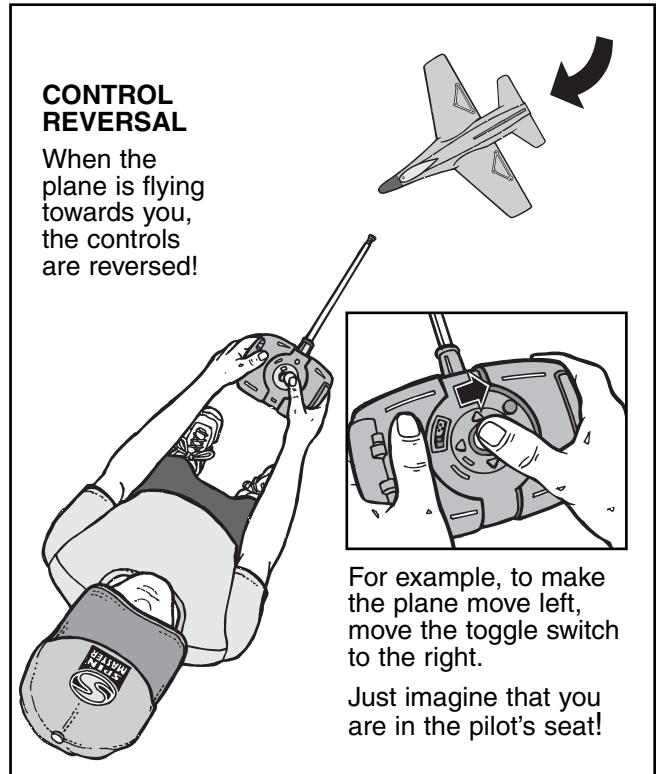
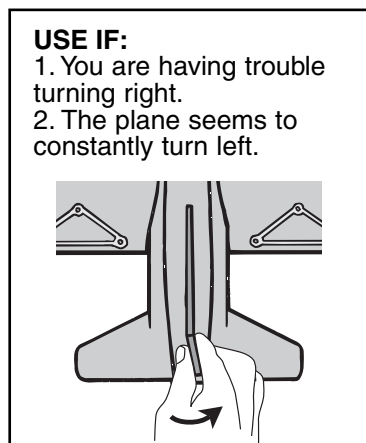
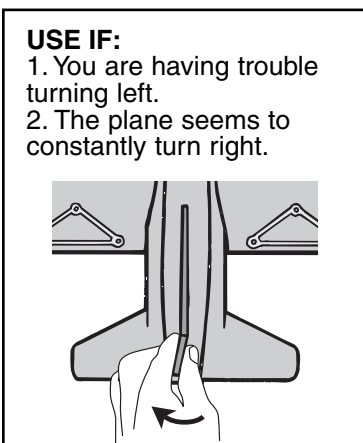
TIP: The wind will blow against your face, if you are facing the correct direction.



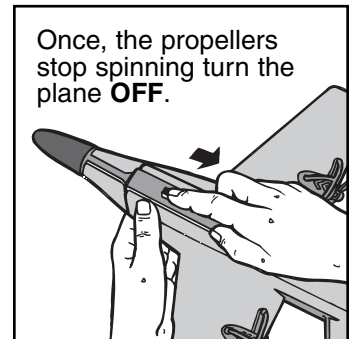
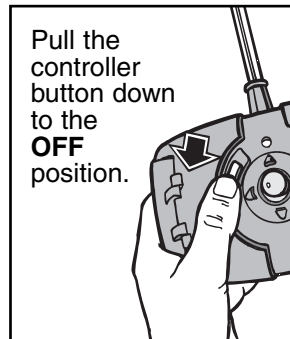
CONTROLLING THE AIRPLANE



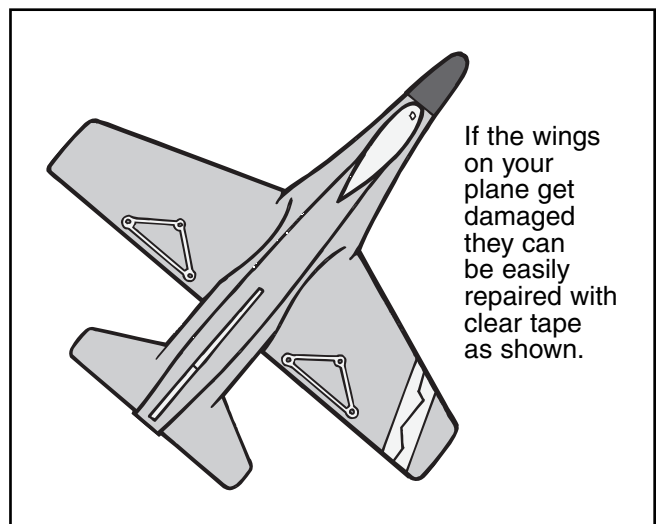
USING THE RUDDER



ONCE THE PLANE HAS LANDED



REPAIRS



After each flight, store the plane in the package to prevent damage.

TROUBLESHOOTING GUIDE

PROBLEM	CAUSE	SOLUTION
Red Charging Light is not blinking.	1. Charge Nozzle is not installed all the way.	1. Insert the Charge Nozzle all the way into the Charge port.
Engines will not start.	1. Plane is not fully charged. 2. Electric motor safety protection. 3. Electric battery safety protection.	1. Charge the plane following "CHARGING YOUR AIRPLANE" instructions. 2. Turn plane OFF and back ON to reset. 3. If plane was left on for more than 15 minutes and not used, it automatically shuts off. To reset, turn plane OFF then ON again.
No Control.	1. No batteries in charger/flight controller or low battery power. 2. Airplane antenna is not fully extended all the way. 3. Flight controller antenna not fully extended. 4. IT IS A WINDY DAY	1. Replace the batteries in the charger/flight controller following the "BATTERY INSTALLATION" instructions. 2. Gently uncoil the plane's antenna all the way. 3. Extend the silver flight controller antenna all the way. 4. DO NOT FLY ON WINDY DAYS. WIND MAY OVERPOWER YOUR PLANE'S ENGINES AND YOU WILL BE UNABLE TO CONTROL THE PLANE.
Plane turns in the wrong direction.	1. Plane is flying toward you and you have not reversed the way you use the throttle.	1. See the control reversal instruction section page 3.

FCC REQUIREMENTS

CAUTION: Changes or modifications to this product not expressly approved by the party responsible for compliance may void the user's authority to operate the equipment.

IMPORTANT SAFETY INFORMATION

Keep plane clear from face and eyes. Keep fingers away from moving propeller(s). Do not launch at people or animals. Use caution: make sure people know you are playing with AIR HOGS™. Recommended for use in wide open grassy areas. Do not fly near overhead wires. Do not use F-16 Falcon™ during electrical storms. Point plane away from face when launching. Use only the docking station charger included in this package. Use only the controller included in this package. Use alkaline batteries only.

WARNING: DO NOT PLACE ANYTHING ON TOP OF YOUR PLANE. DO NOT LEAVE YOUR PLANE UPSIDE DOWN RESTING ON ITS WING TIPS. IF YOU DO EITHER OF THESE THINGS, THEY MAY CAUSE THE FOAM TO DEFORM AND THE WINGS TO BECOME MISSHAPEN. IF THIS HAPPENS, YOUR PLANE MAY NOT FLY. TO PRESERVE THE LIFE OF YOUR F-16 FALCON™, BE CAREFUL TO STORE THE PLANE IN THE FOAM BOX IT CAME IN AND NEVER STORE THE PLANE IN AN UPSIDE DOWN POSITION.

WARRANTY

Spin Master Ltd. warrants to the original consumer purchaser that this product is thoroughly tested and inspected before shipment and is guaranteed to be free of factory defects in material and workmanship for ninety (90) days (unless specified in alternate warranties) from the date of purchase.

In the event of such a defect within the warranty period, Spin Master Ltd., at our sole option, will repair or replace the product or provide you with another product of equal value. Repair or replacement shipment is free of charge. Shipping replacement may take 2 to 6 weeks depending on customer's location.

In the event of a defect covered under this warranty, please call the toll-free number listed below many problems can be solved in this manner. If necessary, you will be instructed to return the defective part or unit, packed securely, postage prepaid and insured by customer, to the address below. Enclose your name, address, dated sales receipt, and a brief explanation of the defect. There may be an additional handling charge if you send the entire toy.

This warranty is valid if and only if the product has been operated in accordance with the instructions. This warranty does not cover worn or defective batteries, damage resulting from neglect, unauthorized modification, accident, misuse, abuse, any action or omission which constitutes a deviation from the instructions or from the use of accessories or parts not manufactured by Spin Master Ltd. If the product is returned without a dated sales receipt the product is excluded from coverage under this warranty.

Spin Master Ltd.'s liability for breach of contract, breach of fiduciary duty, negligence, negligent design, negligent manufacturing, failure to warn, for defects in design, material or workmanship, under any statute, consumer protection legislation, or any regulations passed thereunder, or for absolutely any other potential cause of action or absolutely any other basis upon which liability might otherwise be found, is strictly limited, without exception, to repair or replacement of the product, at our sole option, and in absolutely no event shall we be responsible for incidental, consequential, resultant or contingent damages of absolutely any type, whatsoever, whether these damages were caused or incurred by our breach of contract or negligence or by any other cause, whatsoever. If any provision of this WARRANTY, EXCLUSION, DISCLAIMER AND LIMITATION OF LIABILITY CLAUSE is determined to be invalid or unenforceable in whole or in part, such invalidity or unenforceable provision will attach only to such provision or part thereof and the remaining part of such provision and all other provisions will continue in full force and effect.

Spin Master Ltd. reserves the right to improve the design of any product without assuming any obligation to modify any product previously manufactured.

If you have a problem, Please contact our Customer Care Center below for help.

© 2005 Spin Master Ltd. All rights reserved. TM Spin Master Ltd.
Spin Master Ltd., 450 Front Street West,
Toronto, ON M5V 1B6 Canada
Spin Master, Inc., PMB #10053, 300 International Drive,
Suite 100, Williamsville, NY 14221, USA
Spin Master Toys Far East Limited, Rm # 1113, 11/F,
Chinachem Golden Plaza, 77 Mody Rd., Tsimshatsui E., Kowloon, HK
Spin Master France SAS, 36 rue de Sully, 92100 Boulogne, France

North American Consumer Information
Phone: 1-800-622-8339
www.spinmaster.com

AIR HOGS™ and F-16 Falcon™ are trademarks of Spin Master Ltd. © 2005 Spin Master Ltd.
All Rights Reserved. Manufactured for and distributed by Spin Master Ltd.
Products and colors may vary. Retain package for future reference. Please remove all packaging material before giving to children. Conforms to safety standards ASTM F963-03, EN71 regulatory requirements. MADE IN CHINA.

Asst. #44075 Item #44076 REV 1 U.S. English

Contains NiMH battery pack. Battery pack must be recycled or disposed of properly.



Free Manuals Download Website

<http://myh66.com>

<http://usermanuals.us>

<http://www.somanuals.com>

<http://www.4manuals.cc>

<http://www.manual-lib.com>

<http://www.404manual.com>

<http://www.luxmanual.com>

<http://aubethermostatmanual.com>

Golf course search by state

<http://golfingnear.com>

Email search by domain

<http://emailbydomain.com>

Auto manuals search

<http://auto.somanuals.com>

TV manuals search

<http://tv.somanuals.com>