

NEXT!
BY STANTON

PRO-30

PROFESSIONAL STEREO PREAMP MIXER

OWNER'S MANUAL

PRO-30



Register this product online



www.stantonmagnetics.com

STANTON MAGNETICS, LLC

2821 Evans St. Hollywood, FL 33020 (954) 929-8999
Fax: (954) 929-0333 info@stantonmagnetics.com

TROUBLESHOOTING

Thank you for making Next! your first choice in professional DJ mixers.

This new, innovative family of mixers has been developed with input from the professional DJ community, bringing to the marketplace a previously unavailable, affordable combination of user-friendly, functional design, rugged construction, and professional quality features.

Next! and your authorized Next! dealer are dedicated to your complete satisfaction by offering benchmark service and support throughout the long life of your Next! product.

Again, we appreciate your patronage, and look forward to many years of making music together.

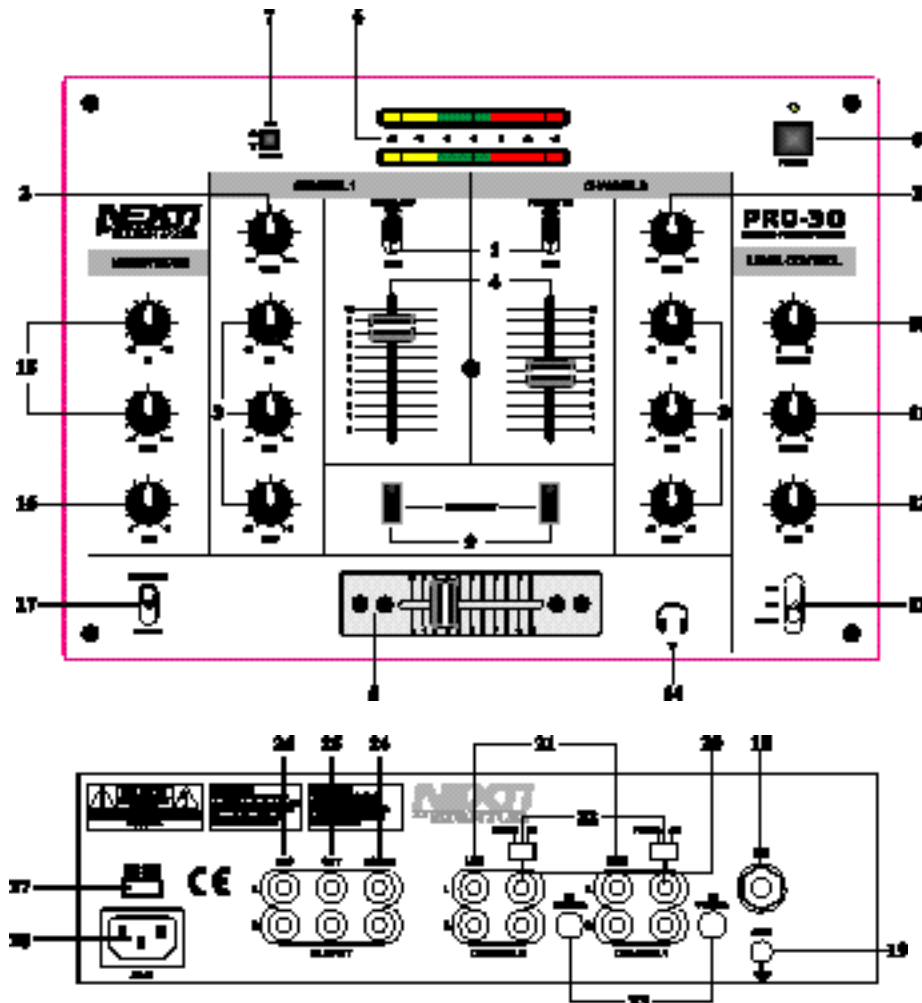
PLEASE READ CAREFULLY BEFORE USE OF THIS PRODUCT

FAILURE TO FOLLOW THE INSTRUCTIONS PRINTED BELOW MAY VOID WARRANTY

- Follow all security advice printed on your mixer
- When removing the unit's AC plug from the power source, grasp and pull the plug, NEVER the cord itself!
- Avoid placing your mixer near heat sources, such as power amplifiers.
- When in use, place your mixer on a stable surface, away from vibration. Always use care when carrying your mixer. Impact, or heavy vibration may compromise the unit's mechanical integrity. The manufacturer is not responsible for damage resulting from an impact, or misuse.
- When in use, place your mixer away from sources of hum or noise, such as transformers, or electric motors.
- To prevent overheating, always provide your mixer with adequate ventilation air space.
- Avoid stepping on your mixer's AC cord. Repeated compression of the cord may lead to electrical shorting.
- To avoid damage due to AC voltage peaks, always disconnect your mixer from the power source during electrical storms.
- Your mixer contains no user-serviceable parts. The manufacturer is not responsible for any damage or personal injury resulting from unauthorized user-servicing or modifications. In addition, the warranty will be void if any unauthorized service by the user is detected. Always return your mixer to an authorized Stanton dealer for servicing.

Problem	Cause	Solution
Excessive hum when using phono source.	Poor ground connection.	Properly connect turntable ground wire to mixer ground terminal.
	Loose cartridge/headshell connection.	Check cartridge connection to headshell. Check headshell connection to tonearm.
Low frequency hum while operating source unit.	Poor AC source ground. Loose input/output connection. Shorted cable.	Properly ground the AC source. Check all input and output connections for secure fit. Isolate and replace the damaged cable.
Program volume can't be adjusted with master volume control.	Amplifier or outboard gear connected to the record output.	Connect amplifier or outboard gear to master output.
No power.	Improperly connected AC cord or power line source not on	Properly connect AC cord to AC power source. Turn power on.
The amplifier is turned up, but there is no signal.	Faulty output connections	Properly connect amplifier, or outboard gear to mixer.
	Improper level adjustment.	Properly set crossfader, channel faders, gain controls, and input selector toggles.
No signal in headphones.	Improper connection.	Check headphone connection to mixer. Tighten if necessary.
	Improper level or cue mix settings.	Adjust headphone level and cue mix to the proper level and channel settings.

DESCRIPTION OF FUNCTIONS



1. Input selector switches: Selects phono or line inputs of channels 1 and 2
2. Gain control: Controls the input sensitivity of channels 1 and 2
3. Equalizer: Individual controls for low frequency, midrange, and high frequency equalization with (+9/-26 dB) Note: Any changes made to EQ settings will change the overall output level.
4. Channel faders: Control the output level of channels 1 and 2
5. Crossfader: Fades the master output between channels 1 and 2
6. Level meter: Based upon the meter mode selector (7) setting, the level meter displays the master output stereo signal level, or the cue levels of channels 1 and 2

7. Meter mode selector: Determines the setting of the level meter (6). When pressed, cue levels of channels 1 and 2 are displayed. When released, stereo master output signal is displayed.
8. Power switch: Selects power "ON" or "OFF"
9. Fader Start controls: Activate the Fader Start function when connected to a CD player with fader start capabilities (such as the Next! NCD-7000). When fader start is engaged, the CD player can be started and paused by the crossfader. This function is defeated while crossfader is reversed.
10. Master level control: Controls the overall signal output level of the Master output
11. Booth level control: Controls the overall signal output level of the Booth output
12. Cue level control: Controls the overall headphone output level.
13. Cue select: 3 position selector switch determines what is heard in the headphones, channel 1, 2, or master output
14. Headphone output: Connection for 1/4 inch headphone. Note: Recommended headphone impedance is 32-200 ohms for maximum volume
15. Mic EQ: Individual controls for low and high frequencies equalization with (+/-12 dB) Note: Any changes made to EQ settings will change the overall microphone output level.
16. Mic volume control: Controls the overall microphone output level
17. Crossfader Reverse: Reverses the direction of the crossfader. The fader start function is defeated while crossfader is reversed.
18. Microphone input: 1/4" connector
19. Ground connector: Connects to the turntable ground connector to eliminate electrical hum. Ground connectors are usually supplied with turntables
20. Phono/CD inputs: Switchable line / phono signal inputs for channels 1 and 2
21. Line inputs: Line signal inputs for channels 1 and 2
22. Phono/CD selector switches: Switches CD/Phono inputs for channels 1 and 2 between line and phono
23. Fader Start output: Connects to the fader start inputs of CD players with fader start function such as the Next! NCD-7000
24. Booth output: Auxiliary output, usually for DJ booth monitoring. Level is controlled by booth level control (11)
25. Master output: Level is controlled by master level control (10)
26. REC output: Record out connects to tape recorder, mini disk recorder, etc. to record performance
27. Voltage selector: Selects between 115V (US) / 230V (EU)
28. Power cord connector: Input connection for the supplied removable power cord.

CROSSFADER CLEANING

The PRO-30 crossfader may need lubrication from time to time. This will extend the fader life and eliminate any potential damage due to extended heavy usage.

Cleaning Instructions

1. Remove the crossfader by unscrewing the 2 outer screws (removing the 2 inner screws will detach the fader from the fader plate) and disconnecting the cable from the mixer.
2. Spray a small amount of cleaner or lubricant into both ends of the fader and slide the fader back and forth a few times to spread the fluid evenly throughout the fader.
3. Shake and wipe off excess fluid before re-assembling the fader.

CROSSFADER REPLACEMENT

To replace the cross or channel faders, follow step 1 of the cleaning instructions. Replacement parts are available from Next! or your local Next! dealer.

TECHNICAL SPECIFICATIONS

Line inputs:	2 (RCA), 150 mV / 47K ohm
Phono inputs:	2 (RCA), 3 mV / 47K ohm
DJ mic input:	1 (1/4 inch), 1.6 mV / 600 ohm
Master output:	1 (RCA), 1V / 600 ohm
Record output:	1 (RCA), 350 mV / 600 ohm
Headphone output:	1 (1/4 inch), 32 - 200 ohms recommended
Frequency Response:	20 Hz - 20 kHz, +/- 0.5 dB
Tone Control :	+ 9/-26 dB (Hi, Mid, Low)
Mic Tone:	Hi/Mid/Lo +/-12 dB
Gain Control:	0-20dB
S/N Ratio:	Less than 80dB
T.H.D:	0.01% at 1KHz
Dimension(LxWxD):	8.6" x 12.2" x 3.94" (220 x 310 x 100 mm)
Weight:	8 Lbs (3.5 Kg) power supply included

WARRANTY

This unit has been designed and manufactured using quality components. Therefore, it is warranted to be free from defects in materials (limited as specified below), and workmanship for a period of thirty six (36) months from the original purchase date. During this period, all service and parts necessary to repair a defect will be free of charge. This limited warranty applies to mechanical parts which are subject to wear and tear as specified:

- Faders, specified durability: 15,000 cycles
- Rotary potentiometers, specified durability: 10,000 cycles
- Switches, specified durability: 10,000 cycles

Consequently, the parts listed above are warranted to be free from defects in materials and workmanship for a period of thirty days (30) days from the original purchase date.

**FOR THE WARRANTY TO BE VALID, PLEASE COMPLETE THE
ONLINE WARRANTY REGISTRATION FORM FOUND AT
WWW.STANTONMAGNETICS.COM**

Stanton Magnetics, LLC, 2821 Evans Street • Hollywood, FL 33020

Free Manuals Download Website

<http://myh66.com>

<http://usermanuals.us>

<http://www.somanuals.com>

<http://www.4manuals.cc>

<http://www.manual-lib.com>

<http://www.404manual.com>

<http://www.luxmanual.com>

<http://aubethermostatmanual.com>

Golf course search by state

<http://golfingnear.com>

Email search by domain

<http://emailbydomain.com>

Auto manuals search

<http://auto.somanuals.com>

TV manuals search

<http://tv.somanuals.com>