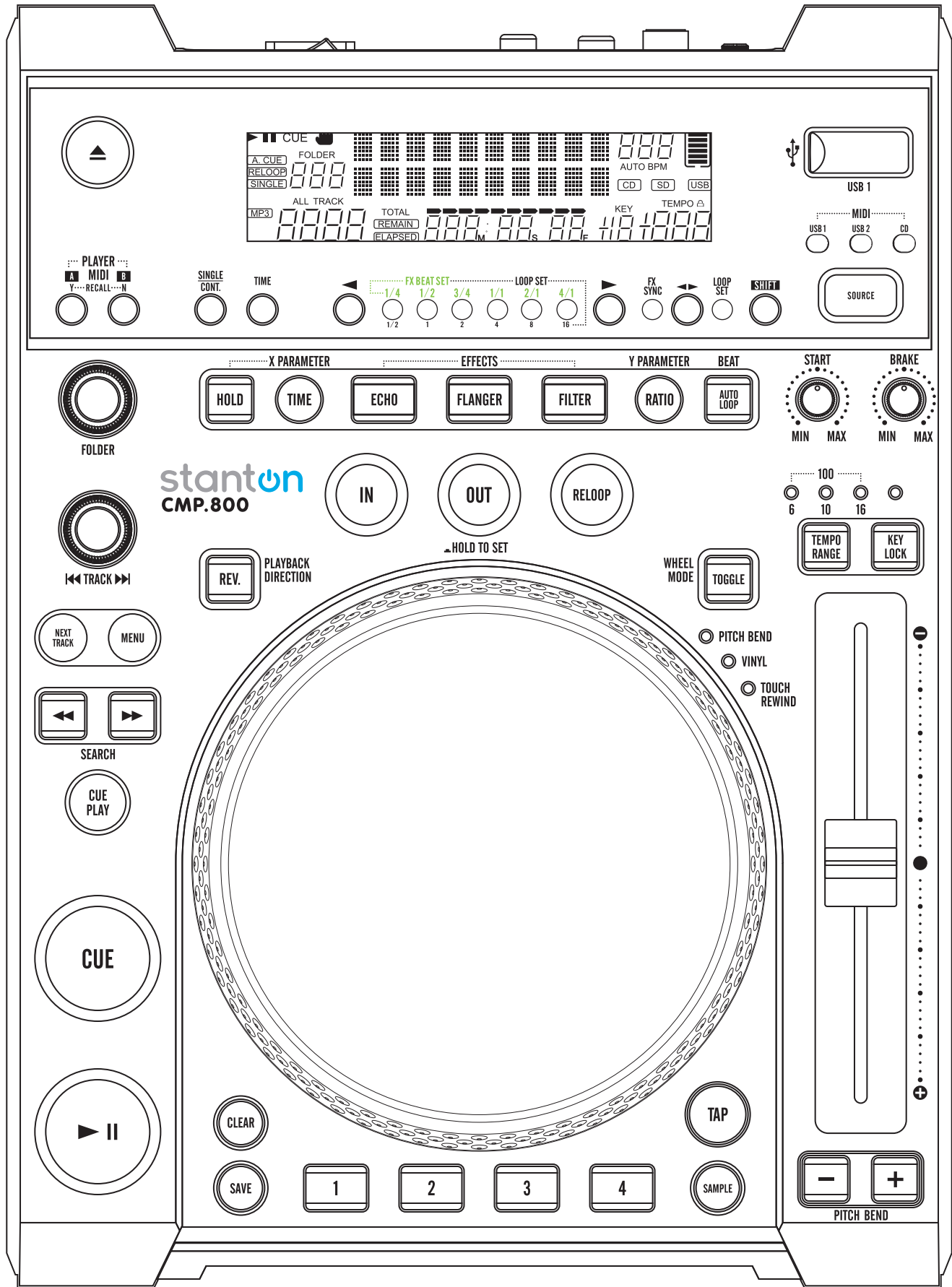



CMP.800

Multi-Media CD/USB/MIDI Controller



User Manual

IMPORTANT SAFETY INSTRUCTIONS

1. Read these instructions.
2. Keep these instructions.
3. Heed all warnings.
4. Follow all instructions.
5. Do not use this apparatus near water.
6. Clean only with dry cloth.
7. Do not block any of the ventilation openings. Install in accordance with the manufacture's instructions.
8. Do not install near any heat sources such as radiators, heat registers, stoves, or other apparatus (including amplifiers) that produce heat.
9. Do not defeat the safety purpose of the polarized plug. The wide blade is provided for your safety. If the provided plug does not fit into your outlet, consult an electrician for replacement of the obsolete outlet.
10. Protect the power cord from being walked on or pinched particularly at plug, convenience receptacles, and point where they exit from the apparatus.
11. Only use attachments/accessories specified by the manufacturer.
12. Use only with a cart, stand, tripod, bracket, or table specified by the manufacturer, or sold with the apparatus. When a cart is used, use caution when moving the cart/apparatus combination to avoid injury from tip-over. 
13. Unplug this apparatus during lighting storms or when unused for long periods of time.
14. Refer all servicing to qualified service personnel. Servicing is required when the apparatus has been damaged in any way, such as power-supply cord or plug is damaged, liquid has been spilled or objects have fallen into the apparatus, the apparatus has been exposed to rain or moisture, does not operate normally, or has been dropped.
15. Where a mains plug is used as the disconnect device, the disconnect device shall remain readily operable.
16. Please keep the unit in a good environment.
17. Apparatus shall not be exposed to dripping or splashing and no objects filled with liquids, such as vases, shall be placed on the apparatus.

WARNING

To reduce the risk of the fire or electric shock, do not expose this apparatus to rain or moisture. The apparatus shall not be exposed to dripping or splashing and that no objects filled with liquids, such as vases, shall be placed on the apparatus.



CAUTION
DO NOT OPEN
RISK OF ELECTRIC SHOCK



CAUTION: To reduce the risk of electric shock, do not remove any cover. No user-serviceable parts inside. Refer servicing to qualified service personnel only.



The lightning flash with arrowhead symbol within the equilateral triangle is intended to alert the user to the presence of un-insulated "dangerous voltage" within the product's enclosure that may be of sufficient magnitude to constitute a risk of electric shock.



The exclamation point within the equilateral triangle is intended to alert the user to the presence of important operation and maintenance (servicing) instructions in the literature accompanying this appliance.

CAUTION

To prevent electric shock, do not use this polarized plug with an extension cord, receptacle or other outlet unless the blades can be fully inserted to prevent blade exposure.

IMPORTANT SAFETY INSTRUCTIONS



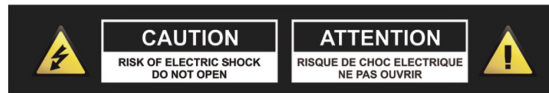
CAUTION: THE LIGHTNING FLASH WITH AN ARROWHEAD SYMBOL WITHIN AN EQUILATERAL TRIANGLE IS INTENDED TO ALERT THE USER TO THE PRESENCE OF UN-INSULATED DANGEROUS VOLTAGE WITHIN THE UNITS ENCLOSURE THAT MAY BE OF SUFFICIENT MAGNITUDE TO CONSTITUTE A RISK OF ELECTRIC SHOCK TO PERSONS.



WARNING: THE EXCLAMATION POINT WITHIN AN EQUILATERAL TRIANGLE IS INTENDED TO ALERT THE USER TO THE PRESENCE OF IMPORTANT OPERATING AND MAINTENANCE (SERVICING) INSTRUCTIONS IN THE LITERATURE ACCOMPANYING THE PRODUCT.



NOTE: THE HAND WITHIN AN EQUILATERAL TRIANGLE IS INTENDED TO ALERT THE USER TO SPECIFIC GUIDANCE AND INFORMATION REGARDING THE OPERATION OF THE UNIT, AND SHOULD BE READ FULLY BEFORE USING THE UNIT FOR THE FIRST TIME



CAUTION: TO REDUCE THE RISKS OF FIRE OR ELECTRIC SHOCK DO NOT REMOVE ANY COVERS, OR OPEN THE UNIT. THERE ARE NO USER-SERVICABLE PARTS INSIDE. ALL SERVICING SHOULD BE REFERRED TO QUALIFIED SERVICE ENGINEERS.



WARNING: READ AND FOLLOW ALL THE SAFETY AND OPERATING INSTRUCTIONS BEFORE CONNECTING OR USING THIS UNIT. RETAIN THIS USER MANUAL FOR FUTURE REFERENCE. ALL WARNINGS ON THE UNIT AND ITS PACKAGING SHOULD BE READ AND FOLLOWED.



WARNING: This product contains a chemical known to the State of California to cause cancer and birth defects or other reproductive harm.



CAUTION: To reduce the risks of fire or electric shock do not expose this product to rain or moisture. Do not use this product near water, for example, near a bath tub, washbowl, kitchen sink, laundry tub, in a wet basement or near a swimming pool. Unplug the unit from the wall outlet before cleaning. Never use thinner, cleaning fluids, solvents or chemically impregnated cloths. For cleaning always use a soft dry cloth. Unplug this product during lightning storms or when unused for long periods of time.



CAUTION: The unit should be installed so that its location or position does not interfere with its proper ventilation. For example, it should not be situated on a bed, sofa, rug or similar surface that may block the ventilation openings, or placed in a built-in installation, such as a bookcase or cabinet, that may impede the flow of air through its ventilation openings. The unit should be situated from heat sources such as radiators, heat registers, stoves or other devices (including amplifiers) that produce heat. No naked flame sources, such as lighted candles, should be placed on, or near the unit.



WARNING: Do not place this unit on an unstable surface, cart, stand or tripod, bracket or table. The unit may fall, causing serious injury to a child or adult and serious damage to the unit. Use only with a cart, stand, tripod, bracket or table recommended by the manufacturer or sold with the unit. Any mounting of the device on a wall or ceiling should follow the manufacturer's instructions and should use a mounting accessory recommended by the manufacturer. An appliance and cart combination should be moved with care. Quick stops, excessive force and uneven surfaces may cause the appliance and cart combination to overturn Use only with the cart, stand, tripod, bracket, or table specified by the manufacturer, or sold with the apparatus. When a cart is used, use caution when moving the cart/apparatus combination to avoid injury from tip-over.



NOTE: Should the unit become damaged beyond repair, or reaches the end of its life, please consult the regulations regarding disposal of electronic products in your region



NOTE: Stanton Magnetics cannot be held responsible for damage, and, or including data loss caused by improper use of the unit and or the applications provided for use with the unit.

IMPORTANT SAFETY INSTRUCTIONS



CAUTION TO PREVENT ELECTRIC SHOCK, MATCH WIDE BLADE OF PLUG TO WIDE SLOT FULLY INSERT.

ENGLISH: The apparatus shall be connected to a Mains socket outlet with a protective earthing connection.

GERMAN: Das Gerat ist eine Wandsteckdose mit einem Erdungsleiter angeschlossen werden.

FRENCH: L'appareil doit etre connects a une prise secteur avec connexion a la terre.

SPANISH: El aparato estara conectado a una toma de red electrica con una conexion a tierra.

ITALIAN: L'apparecchio deve essere collegato a una presa di rete con una connessione a terra protettiva.



1. The unit and power supply should only be connected to a power supply outlet only of the voltage and frequency marked on its casing.
2. Protect the power cable from being walked on or pinched particularly at plugs, convenience receptacles, and the point where they exit from the apparatus.
3. Do not defeat the safety purpose of the polarized or grounding-type plug. A polarized plug has two blades with one wider than the other. A grounding type plug has two blades and a third grounding prong The wide blade or the third prong is provided for your safety. If the provided plug does not fit into your outlet, consult a qualified electrician for replacement of the obsolete outlet.
4. If the mains plug supplying this product incorporates a fuse then it should only be replaced with a fuse of identical or lower rupture value.
5. Never use a damaged or frayed power cable; this can introduce serious risk of exposing lethal voltages.
6. The power supply cable of the unit should be unplugged from the wall outlet when it is to be unused for a long period of time.
7. Only use attachments/accessories specified by the manufacturer.



DO NOT ATTEMPT SERVICING OF THIS UNIT YOURSELF. REFER SERVICING TO QUALIFIED SERVICE PERSONNEL.

Upon completion of any servicing or repairs, request the assurance that only Factory Authorized Replacement Parts with the same characteristics as the original parts have been used, and that the routine safety checks have been performed to guarantee that the equipment is in safe operating condition.



REPLACEMENT WITH UNAUTHORIZED PARTS MAY RESULT IN FIRE, ELECTRIC SHOCK OR OTHER HAZARDS.

ATTENTION POUR ...VITER LES CHOC ELECTRIQUES, INTRODUIRE LA LAME LA PLUS LARGE DE LA FICHE DANS LA BORNE

CORRESPONDANTE DE LA PRISE ET POUSSER JUSQUIAU FOND.



This unit should be serviced by qualified service personnel when:

- The power cord or the plug has been damaged
- Objects have fallen, or liquid has been spilled into the unit
- The unit has been exposed to rain or liquids of any kind
- The unit does not appear to operate normally or exhibits a marked change in performance
- The device has been dropped or the enclosure damaged.

REGULATORY CERTIFICATION

Stanton Magnetics declare under our sole responsibility that this product, to which this declaration relates, is in conformity with the following standards:



The Declarations of Conformity can be obtained from 382 Ave de la Couronne, B-1050 Brussles Authorized European representative: Phone: +3226450500 Fax: +326450505

1. Introduction

1.1 Welcome to the CMP.800!

Thank you for purchasing the CMP.800, an advanced cross-media player and MIDI controller. The CMP.800 allows you to play from a number of mass-storage devices as well as CDs, and acts as a powerful MIDI controller for popular DJ software.

Before starting, please check that you have received the following items:

- CMP.800 unit
- Power Cable
- User Manual

Now that you have checked that everything was included in the box, let's talk about this exciting unit.

1.2 Overview

- Plays MP3/WAV* files from USB or regular CDs
- MP3 Track Listings
- Headphone jack w/Trim Control
- Fine Tune BPM
- Next Track Search
- Auto Cue
- Real time cue ("Cue on the fly")
- 8 different speed scan (4 Forward/4 Reverse)
- Pitch display
- RCA coaxial output
- Large bright VFD display
- Fader Start Control
- Seamless Loop (uninterrupted loop playback)
- Sampler (Forward & Reverse Sampling)
- Memory backup, Defaults to last setting
- 10 Second digital Anti-shock
- Sleep mode
- Relay playback
- Jog wheel pitch bend +/-100%
- Selectable Single or Continuous Play
- Folder Search for Mp3's
- 2000 (500 track x 4) programmable Cue Points for CD
- 4 programmable Cue (Bank) buttons
- Adjustable pitch Percentages: +/- 6, 10, 16 or +/- 100
- Instant Start within 10 ms (sound is produced immediately when PLAY button is pressed)

* WAV Files: 1411 kbps PCM

Press MENU BUTTON to enter the internal menu, and turn the FOLDER KNOB to search through the different menu.

Turn the TRACK KNOB or Jog Wheel to change the submenus; press MENU BUTTON to memorize your settings and exit the menu.

1. JOG MODE - Select JOG LED mode (mode range is 1~8)
2. PLAYLIST - Normal / Title/ Artist / Album/ Genre (for USB)
3. SENSITIVITY - Touch Wheel Sensitivity Adjustment (Adjustment range is -20~+20)
4. PITCH BEND - Pitch range +/-1%~100%
5. LINE SETUP - L1 mode = 1~3 (Line 1 mode)
 - L2 mode = 1~3 (Line 2 mode)
 - Dis = 0.5~12.0 sec. (LINE NAME start/stop time adjustment2 mode)
 - Run = 50~2000 (LINE NAME move time adjustment2 mode)
6. SLEEP TIME - No sleep, 5~120 min
7. INTENSITY - VFD Brightness (Brightness Range is 1~4)
8. A.CUE LEVEL - Change the AUTO CUE Level (Level Range is -36~-78db)
9. MIDI CC TYPE - Change the send of REL.(RELATIVE), ABS.(ABSOLUTE), Note for FOLDER /TRACK/ WHEEL under MIDI mode.

A. MIDI SETUP

- USB = MIDI/LINK (USB MIDI JACK function)
- CHAN = Player CHAN 1~16 selection
- SHIFT = HOLD/SW.
- JOG OUTPUT (0~30 ms) (Control JOG MIDI max. send time)
- Pulse = (1024 or 512) (Select sensor to send Pulse)
- I/O DISPLAY/Hide (display/hide MIDI I/O value)
- EDIT = ON/OFF (Set MIDI NOTE and MIDI LED code on/off; ON→default value)
- NAME = MIDI (B~H) (2 more devices connection)

B. MIDI NOTE EDIT - Edit the send MIDI NOTE code (Please refer MIDI MAP)

C. MIDI LED EDIT - Edit the received MIDI LED code (Please refer MIDI MAP)

D. REPEAT MODE - Play FOLDER repeat

E. BIT RATE- Display ON
Display OFF

F. VERSION - CON: Verxx (Control version)

- SER: VerXX(Servo version)
- BUF: VerXX(Buffer version)
- DSP: VerXX(DSP version)

G. LOAD DEFAULT - Press TRACK Knob to enter load defaults.

H. EXIT & SAVE - Exit & Save setting to next power on (Press the TRACK KNOB to fast exit & save in any operating mode)

Note:

Save: PITCH ON/OFF, PITCH RANGE, SGL/CTN, AUTO CUE, TIME MODE, HOLD, KEY LOCK, EFFECTS ON/OFF, SENITIVITY, DISPLAY/SCROLL TIME/JOG MODE/ INTENSITY/ A.CUE LEVEL/MIDI CC TYPE / MIDI CH/ MIDI SETUP

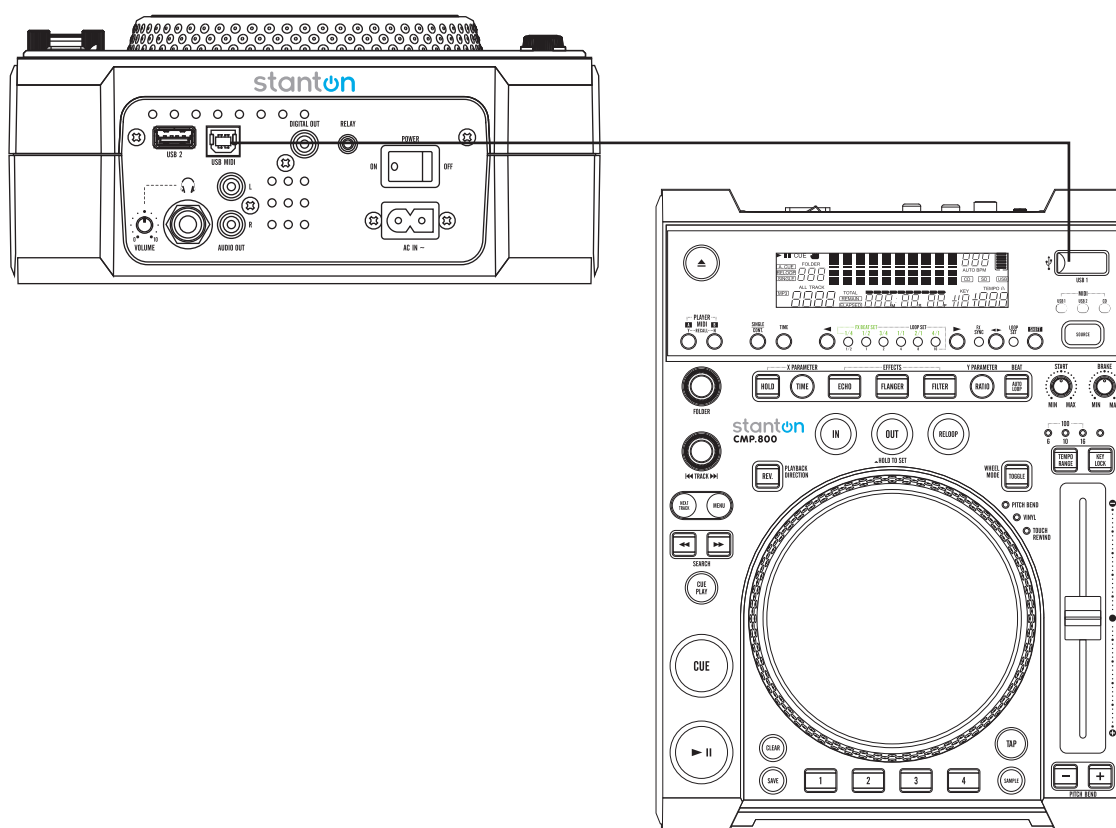
Defaults: PITCH (ON), PITCH RANGE (10%), (CTN), AUTO CUE(ON), TIME MODE (REMAIN), HOLD(OFF), KEY LOCK(OFF), EFFECTS(OFF), SENITIVITY(0), PITCH BEND(PITCH RANGE), BIT RATE(Disp. ON), JOG MODE (MODE1,1), INTENSITY(4), A. CUE LEVEL(-48db), MIDI CC TYPE(REL.) , MIDI CH(CH 1,2), MIDI SETUP(JOGOUT 0 ms) (PULSE 1024) (I/O HIDE), REPEAT MODE(OFF), LINE SETUP (LINE 1 DISPLAY=2/LINE 2 DISPLAY=1), (DISPLAY (1 sec)/RUN (150msec) TIME, PLAYLIST (NORMAL), SLEEP MODE(15min)

With this function a USB device can be plugged into a single CMP.800, and a second player can access the data from the drive. Follow the directions below to setup the link function.

MAIN PLAYER:

- Press the Menu button to enter the internal menu.
- Once you are in the internal menu, turn the FOLDER knob until MIDI SETUP is displayed.
- Press the SHIFT button and turn TRACK knob until the USB = LINK is displayed, and press the Menu button to memorize the setting and exit.
- Now load your USB1 device into the MAIN PLAYER.
- Connect the MAIN PLAYER using the rear USB MIDI port to the second player USB port.
- You should now be able to access the main player loaded USB1 device using the second player controls.
(The USB1 device must be read first on the main player whenever loaded the device.)

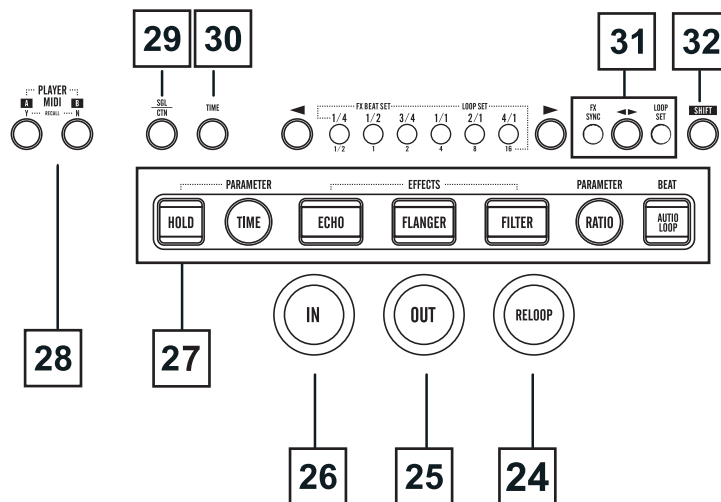
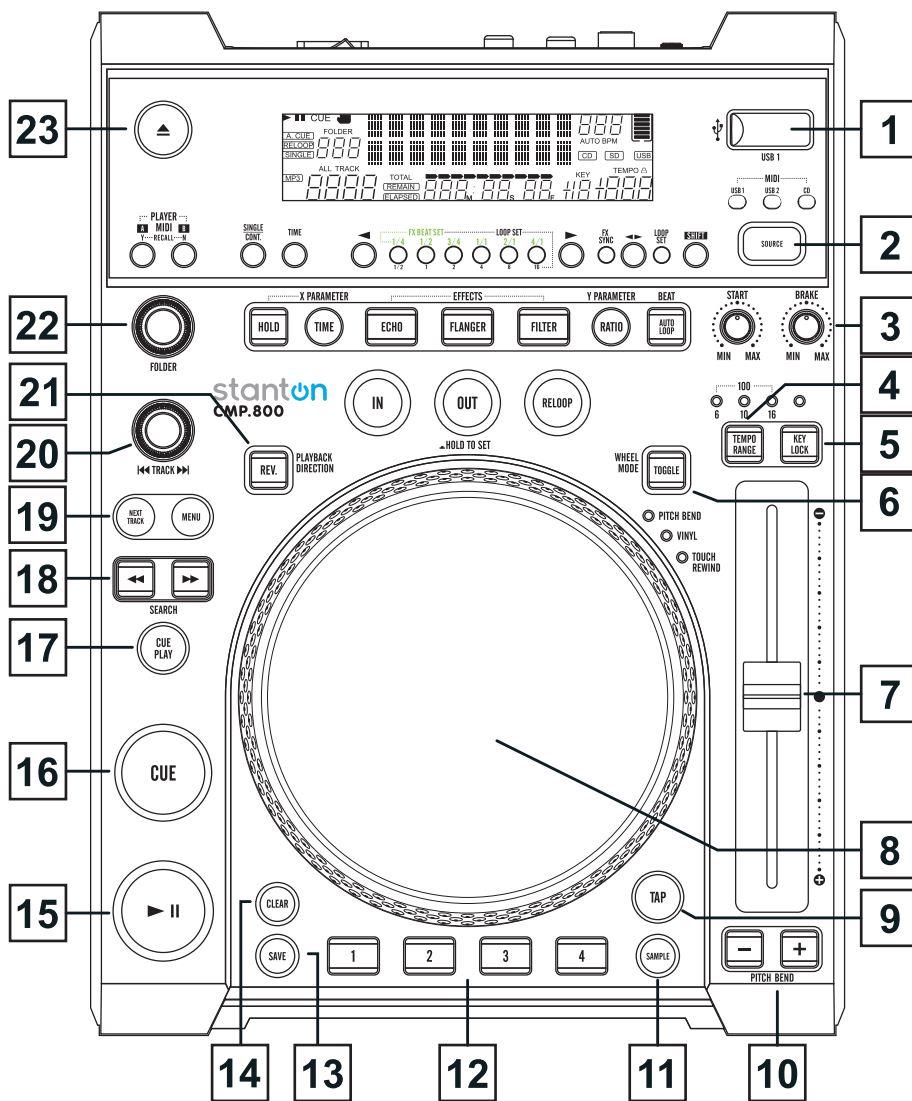
Main Player (with loaded USB Device)



Second Player

WARNING:

It is recommended that the USB Cable be at least 28 gauge or higher and no more than 3 feet long.



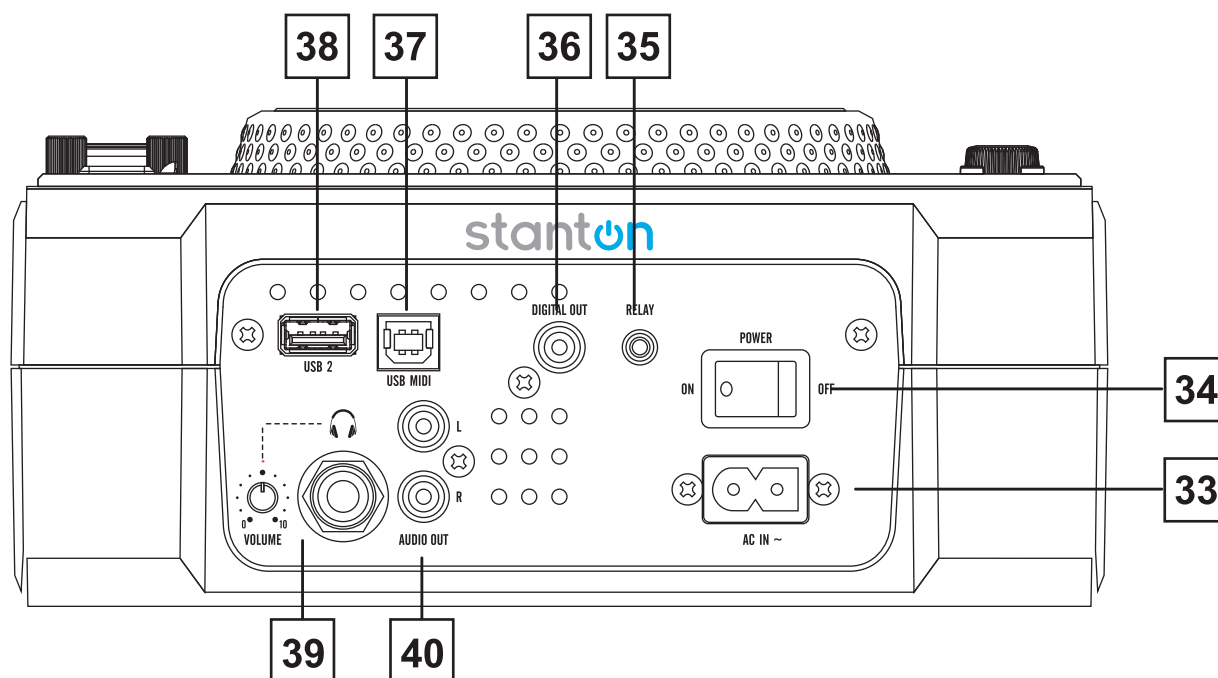
1. **USB Port:** This is the USB port where you insert your USB mass storage device.
2. **Source Select:** Use this button to select CD/USB1/USB2/MIDI music. Hold the SOURCE SELECT button for 2 sec. enter MIDI mode.
3. **Brake, Start Dial**
 - Brake Dial**
 - a. When in the VINYL mode, this BRAKE dial determines the deceleration speed until play stops when the jog wheel is touched.
 - b. When in the VINYL or Touch Rewind mode, this BRAKE dial determines the deceleration speed until play stops when the PLAY/PAUSE button is touched.
 - c. When the BRAKE dial is rotated to MIN, play stops quickly; when the dial is rotated to MAX, play stops more slowly before coming to a complete stop.
 - Start Dial**
 - a. When in the VINYL mode, this START dial determines the acceleration speed until full playback speed is reached when the jog wheel is spun backward.
 - b. When in the VINYL or Touch Rewind mode, this START dial determines the acceleration speed until full playback speed is reached when the PLAY/PAUSE button is pressed.
 - c. When the START dial is rotated to MIN, play starts quickly; when the dial is rotated to MAX, play starts more slowly before full playback.
4. **Tempo Range Button:** Press the button to choose any pitch percentage of 6%, 10%, 16%, and 100%. With this button you can also switch Pitch Slider on/off, by pressing it for at least 1 sec.
5. **KEY Lock:** This button activates the KEY LOCK function. This function allows you to use the PITCH SLIDER to speed up or slow down playback speed without altering the tonal pitch of the track.
6. **Toggle Button (Wheel Mode):** Each press the TOGGLE button to select the Wheel Mode of Pitch Bend/VINYL/Touch Rewind.
 - a. Pitch Bend - When wheel mode is set to Pitch Bend, scratch mode is exit, JOG WHEEL can be used to pitch bend and frame search.
 - b. VINYL - When wheel mode is set to VINYL, use the JOG WHEEL to activate the scratch effect by touching the surface of jog wheel.
 - c. Touch Rewind.
 - i) In Playback mode
While in play mode and when touch rewind mode is active, the JOG WHEEL can be used to return the unit to last IN point. Simply touch the JOG WHEEL and unit will immediately return to the last set CUE point (BANK LED is not blinking) or BANK in point (LED is blinking) and playback without music interruption.
 - ii) In CUE mode
While in cue mode and when touch rewind mode is active, tapping on the JOG WHEEL can be used to start playback. The unit will continue to playback until the JOG WHEEL is released. Once the JOG WHEEL is released the unit will return to the last IN point.
7. **Pitch Slider:** This slider is used to adjust the playback pitch percentage. The slider is a set adjustment and will remain set until the pitch slider is moved or the pitch function has been turned off.
8. **JOG Wheel:**
 - a. The jog wheel will act as a frame search control when the track in the pause or cue mode. Press the PLAY button to pause the track for frame search.
 - b. The wheel also works as a pitch bend during playback. Turning the wheel clockwise will increase the pitch percentage up to 100%, and turning the wheel counterclockwise will decrease the pitch percentage down to -100%. The pitch bend will be determined on how long you turn the jog wheel continuously.
 - c. The jog wheel can be used with the hold of the TIME and RATIO knob to set effects and samples parameter adjustment.

There are several varied modes can be adjusted for Jog Wheel light ring.

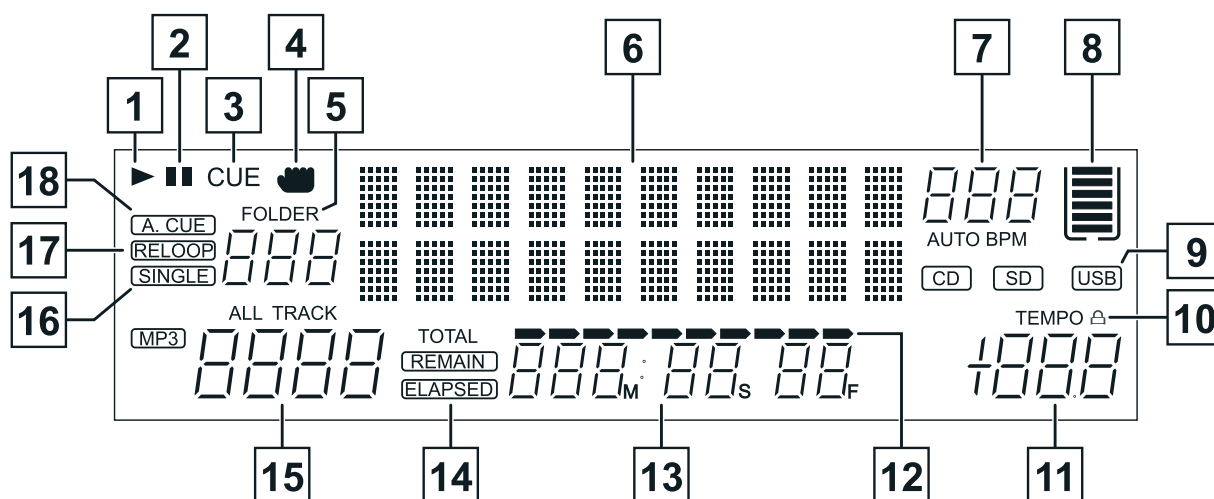
 1. To select light ring you desired; press MENU button to enter internal menu, and turn FOLDER knob to search "JOG MODE" menu.
 2. Turn the TRACK knob to select the MODEs you want to adjust.
 3. Press SHIFT button and turn TRACK knob to adjust the setting value.

- 1) MODE 1 - It will show the playing point indicator around the ring. You can adjust the setting value range 1 of smallest indicator to 23 of full circle indicator.
 - 2) MODE 2 - It will indicate the playing point opposite (on→off / off→on) when the Jog Wheel is touched. You can adjust the setting value range 1 of smallest indicator off to 23 of full circle off.
 - 3) MODE 3 - It will show the playing point indicator around the ring and flash to the playing level in both sides. You can adjust the setting value range 1 of smallest playing point indicator to 23 of full circle indicator.
 - 4) MODE 4 - It will flash to the playing level around the ring.
 - 5) MODE 5 - It will always on. You can adjust the setting brightness range 1 to 100.
 - 6) MODE 6 - It will flash related to the setting speed. You can adjust the setting speed range 1 of fast flash to 100 of slow flash.
 - 7) MODE 7 - It will show the playing point similar to trail effect.
 - 8) MODE 8 - It will light when the Jog Wheel is touched.
9. **TAP Button:** This button is used for manual BPM. When in manual BPM mode, tap this button to the beat of the current track. Hold the TAP button for 1 sec. to activate Auto BPM.
10. **Pitch Bend Buttons:** The desired pitch of CD decreases or increases when this button is pressed and returns to the original pitch when the button is released.
11. **SAMPLE Button:**
- a Press the SAMPLE button again to set the sample mode (LED is flash).
 - b Press this button, then press the desired BANK button to set the sample loop mode (LED is on).
 - c Press the SAMPLE button again to cancel sample function.
 - d When sample mode is set, then sampler will mix the music together.
12. **BANK Buttons 1~4:** These buttons are used to store either four cue points or four samples. Each Bank Button can store either a sample or a cue point. To play your programmed samples, press the Sample button and then press the Bank Program button.
The stored Cue point will become sample when you change another CD or USB device to play.
13. **SAVE Buttons:** This button can be used in couple of ways:
- a. Press this button to activate the memory mode, the save button LED will glow when active. After the memory mode is activated, press your desired bank button to store your CUE point or playing loop.
 - b. To store your loops and cue points that are saved in the BANKS to the system memory for next time, press the MEMORY button for 1 sec.
- NOTE: RECALL MEMORY – The CMP.800 can store 2000 programmed cue points in 500 tracks for CD and 4 programmed cue points per track in the USB device. These setting may be recalled at any time, even when an audio source has been removed and loaded at a later time.
To recall the bank memory with CD/USB device: 1) Turn the TRACK knob to select the track which with the BANKS and “Load Cues?” will be shown on the VFD, press MIDI PLAYER A (Y) to load or press MIDI PLAYER B (N) not to load. Or 2) press the SAVE button, LED on, and turn the TRACK knob to select the TRACK with BANKS that you would like to recall.
14. **CLEAR Button:** Press CLEAR button, LED on, or hold the CLEAR button to select the BANK buttons you would like or clear.
15. **Play/Pause Button:** Each press of the button engages playback or pauses the track.
16. **Cue Button:** Pressing the Cue button during playback and returns the tracks to the last set cue point. When the song is paused, press the Cue button to set a new Cue point. Hold down the Cue button to engage Cue playback until released.
17. **Cue Play Button:** Press the button to return point and playing immediately. You can also tap the button to create a CUE RETURN effect.
18. **Search Buttons:**
- ◀◀ This search button allows you to quickly scan backwards through a track.
 - ▶▶ This search button allows you to quickly scan forwards through a track.
19. **Next Track Button:** While either playing a track or in pause mode, press this button to search for the next track you want to play. NEXT TRACK indicators will flash. Now you can turn the FOLDER or TRACK knob to search for the next track. Press the MENU button you found your desired track.
20. **TRACK Knob:** This knob has three functions.
- a. The knob is used to select a track. Turning track knob will forward/backward skip to next track.
 - b. Holding down and turning track knob will rapidly forward/backward skip through the tracks by 10 tracks per click.
 - c. Press track knob to switch file name/title (ID3)/artist (ID3)/Album (ID3)/Genre (ID3) on the VFD.

- 21. REV. Knob:** Activates reverse playback function to play the track or sampler in reverse. Press the button again to deactivate this effect.
- 22. FOLDER Knob:** Turn FOLDER knob to search for the desired folder.
- 23. EJECT Button:** Pressing this will eject the CD. The eject function will only when the unit is in cue or pause mode, this is to prevent accidentally ejecting the disc when in play mode.
- 24. RELOOP Button:** If a SEAMLESS LOOP has been made, but the CD player is not currently in seamless loop mode, pressing the RELOOP button will instantly reactivate the seamless loop mode. To exit loop, press the OUT button. RELOOP will appear in the VFD display when the RELOOP function is available.
In the loop mode, hold OUT button, LED of OUT/RELOOP will flash and "OUT EDIT" will be shown on the VFD, now you can turn the JOG wheel to edit out point; then press the OUT button again to exit editing.
- 25. OUT Button:** This button is used to set the end point of a loop. A loop is started by pressing the IN button, pressing the OUT button set the loop ending point. The loop will continue to play until the OUT button is pressed once again.
- 26. IN Button:** This function allows you to set a CUE POINT without music interruption. This button also sets the starting point of a seamless loop.
- 27. EFFECT and HOLD Button(s)**
- i) **HOLD Button** - This button allows you to set and lock any new parameters you set to the effects. This button will glow when the hold function is activated. If the hold function is not selected any changes to the effect parameters will be momentary.
 - ii) **PARAMETER TIME Button** - This button is used to adjust the parameter time value. You can also push the TIME knob. LED on, and turn the JOG wheel to adjust the parameter time value.
 - If the hold function is not selected any changes to the effect parameters will be momentary.
 - During hold function is selected the auto beat sync will be turned off.
- ECHO Effect** - This button is used to activate and deactivate the echo effect. The echo effect adds an echo to your output signal.
- FLANGER Effect** - This button is used to activate and deactivate the flanger effect. The flanger effect layers a short delayed version of the original track to the output signal to create an effect similar to a jet taking off.
- FILTER Effect** - This button is used to activate and deactivate the filter effect. The filter acts like a very powerful sweeping EQ with resonance.
- PARAMETER RATIO Button** - This button is used to adjust the parameter ratio value. You can also push the RATIO knob, LED on, and turn the JOG WHEEL to adjust the parameter ratio value.
- AUTO LOOP Button** - Press this button to activate AUTO LOOP function. Press IN button, and OUT point will be found automatically according to the BPM value.
- 28. MIDI A/B:** Under the MIDI mode, press this button to switch PLAYER A/B.
- 29. SGL/CTN Button:** This function allows you to choose between single or continue track play (all tracks in order). This function also operates in RELAY mode. With this button you can also switch auto cue on and off, by pressing it for at least 1 sec.
- 30. TIME Button:** The button will switch the time value described in the TIME Meter between ELAPSED playing time, TRACK Remaining time and TOTAL Remaining time.
- 31. ◀▶ :** Use this button to select FX SYNC or LOOP SET.
FX SYNC - This is used to select the delay time of an effect to the beat of music. The beat delay ratios are 1/4, 1/2, 3/4, 1/1, 2/1, and 4/1. To turn off auto beat sync press ◀ button for 1 sec.
LOOP SET - When the loop set function is activated, select the beat of 1/2, 1, 2, 4, 8, 16 (1 bar=4 beat) at which you would like to end your desired loop.
- 32. SHIFT Button:** Hold the SHIFT button enables to call up a second function.



- 33. Power Connector:** This connection is used to connect your power cord to the unit.
- 34. Power Button:** This button is used to turn your unit's power on and off.
- 35. RELAY Socket:** Via the RELAY socket, two CD players can relay play. If you connect with a mixer which supporting fader start, you can also relay play via mixer's crossfader.
- 36. Digital OUT:** Use this connection to create near perfect copies of your music to a MINI disc, CD-R, or any other digital recording device.
- 37. USB MIDI Port:** Use this jack to connect to a computer or link a host USB player.
- 38. USB2 Port:** This is the USB port where you insert your USB mass storage device.
- 39. Headphone jack & Volume Control:** This jack is used to connect your headphones and the volume control is for your headphones and is located next to it.
- 40. Audio OUT L & R:** Audio OUT signals. Connect stereo RCA cable from audio out to a mixer's line input.



1. **PLAY Indicator:** The play indicator will glow when the unit is in play mode.
2. **PAUSE Indicator:** The pause indicator will glow when the unit is in pause mode.
3. **CUE Indicator:** This indicator will glow when the unit is in CUE mode and will flash every time a new CUE point is set.
4. **TOUCH Indicator:** This appears when a hand touches the jog wheel.
5. **FOLDER Display:** This indicator which folder you are in.
6. **Character Display:** This will display the name of the track and album when a MP3 track is loaded.
7. **BPM Meter:** This meter will display the BPM's of the current track.
AUTO BPM: This will indicate that the AUTO BPM counter is active.
8. **MEMORY Bucket:** This indicator serves two functions. The bucket outline details the cue memory status; a full bucket outline indicates the cue memory is full. The five bars in the memory bucket detail the digital buffer. Each bar indicates 2 seconds. The search functions will not operate until all the bars are full.
9. **CD/USB Indicator:** This indicates which port is active. Use the source button to select your desired port.
10. **TEMPO Lock:** This will indicate the TEMPO lock function is active.
11. **PITCH Indicator:** This meter will display the pitch percentage applied by the pitch slider.
12. **TIME Bar Indicator:** This bar gives a visual approximation of a track's or disc's time. This bar will begin to flash when a track is ending.
13. **TIME Meter:** These indicators will detail the current Minutes, Seconds, and Frames. The meter will display either the elapse, total, or remaining time of a track or the entire disc. The display time will depend on the selected time function. The selected time function will be displayed above the TIME METER as total remaining, remaining track time, or elapsed track name.
14. **REMAIN/ELASPED Indicator:** When REMAIN is shown in the VFD display the time meter will show the current track's remaining time. When ELAPSED is shown in the VFD display the time meter will show the current track's elapsed time.
15. **TRACK Display:** This indicator describes which track is currently cued or is playing.
16. **SINGLE Indicator:** This indicates that the track is in single play mode; the track will play once and return to CUE mode. If the single indicator is not on, the unit is in continuous mode.
17. **RELOOP Indicator:** Appears when LOOP is engaged or ready to be engaged.
18. **AUTO CUE:** This will indicate if the Auto Cue is on or off. Press and hold the SGL/CTN for 1 sec. to turn the Auto Cue function on and off.

Media Wallet:

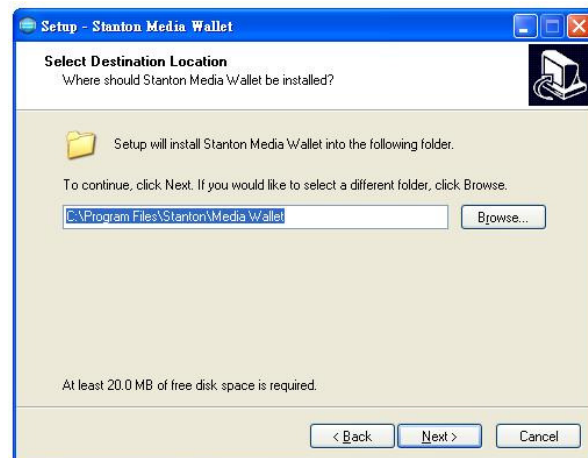
Media Wallet is a database management software program that allows you to prepare the media content on your USB drives and enables you to search for your files by Title, Artist, Album and Genre.

Installation: Refer to the following figures for installing database management software on your computer.

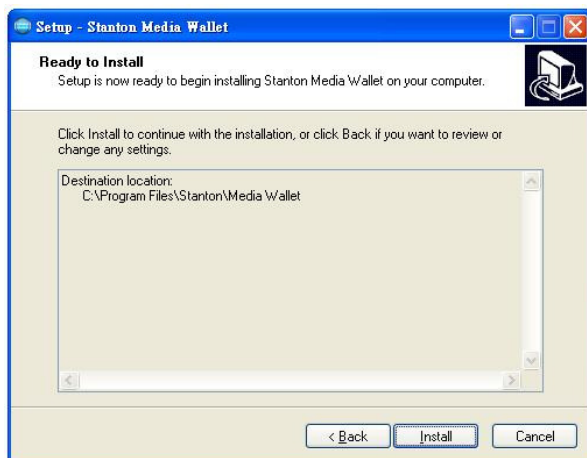
Download available at www.stantondj.com



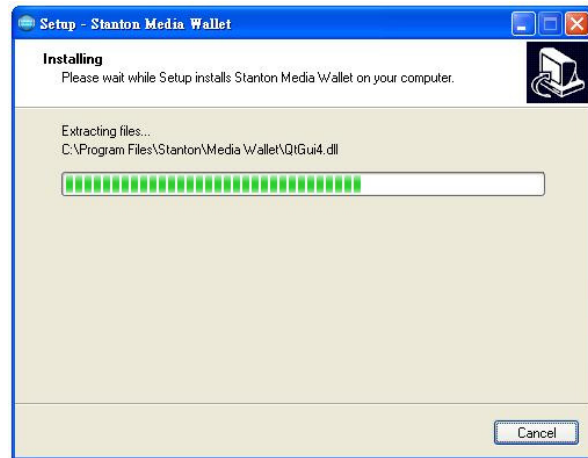
STEP 1: Click next >



STEP 2: Click next >



STEP 3: Click install



STEP 4: Processing

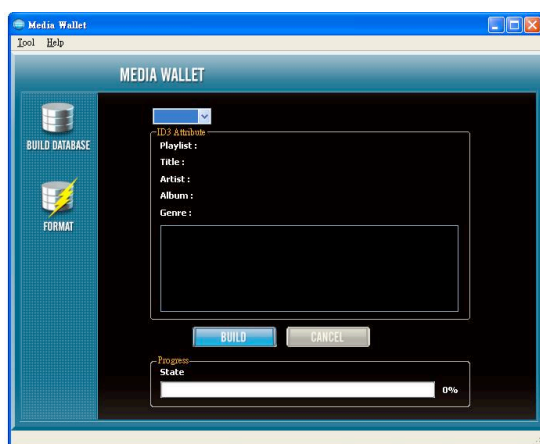


STEP 5: Click finish

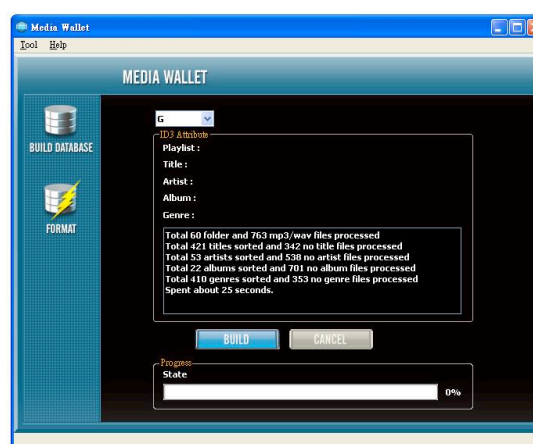
The database builder will scan your USB hard drive and create database files to locate the files in your music library in your favor.

Scan and create: Refer to the following figures to process scanning and creating database.

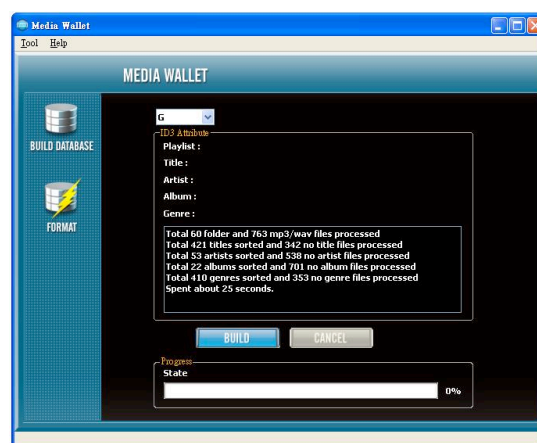
NOTE for Vista users please right click the icon and select "RUN AS ADMINISTRATOR".



STEP 1: select the desired USB hard drive and Click Build



STEP2: processing



STEP3: complete

PLAYLIST:

1. Press and hold the MENU button to enter the internal menu, and turn FOLDER to search PLAYLIST menu.
2. Turn the TRACK knob to select "Normal/Title/Artist/Album/Genre" (for USB only). And press the MENU button again to save your setting and exit the menu.




Ex: to select "Artist"

 - a. Hold and turn the FOLDER knob you can select the folder you like by first letter of Album, and the Album alphabet is arranged in order (A, B, C....in order)
 - b. Turn the FOLDER knob; or hold the FOLDER knob and turn Jog Wheel to select next "Artist"
 - c. Each press TRACK knob you can select the ID3 of track you like to indicate.
 - d. Turn the TRACK knob; or hold the TRACK knob and turn Jog Wheel to select the track you like.

SYSTEM REQUIREMENTS:

- CPU: inter Pentium 4, 1 GHz processor, Intel Centrino Mobile Technology 1.6 GHz or above.
- RAM: 512 MB
- DISK Space: 100MB of free disk space need
- OS: Microsoft Windows XP XP3, Vista SP2

MIDI Map (Hexadecimal)

SW name	Type	MIDI	MIDI2 (Hold SHIFT)	Remarks
FOLDER 	SW/ENC	2B/31	6A/70	CC TYPE = RELATIVE
◀ TRACK ▶	SW/ENC	25/33	64/72	CC TYPE = RELATIVE
JOG	SW/ENC	13/35	52/74	CC TYPE = RELATIVE
FOLDER 	CW/CCW	31/32	70/71	CC TYPE = NOTE
◀ TRACK ▶	CW/CCW	33/34	72/73	CC TYPE = NOTE
JOG	CW/CCW	35/36	74/75	CC TYPE = NOTE
FOLDER 	ENC/CENTER	31/0F	70/4E	CC TYPE = ABSOLUTE
◀ TRACK ▶	ENC/CENTER	33/15	72/54	CC TYPE = ABSOLUTE
Pitch Silder	VR/CENTER	PITCHBEND/18	76/57	
START	VR	27	66	
BRAKE	VR	2D	6C	
▶ 	SW/LED	02/02	41/02	
CUE	SW/LED	2E/2E	6D/2E	
NEXT TRACK	SW/LED	10/10	4F/10	
HOLD	SW/LED	11/11	50/11	
FX TIME	SW/LED	0B/0B	4A/0B	
FX RATIO	SW/LED	2F/2F	6E/2F	
ECHO	SW/LED	05/05	44/05	
FLANG.	SW/LED	29/29	68/29	
FILTER	SW/LED	23/23	62/23	
LOOP	SW/LED	30/30	6F/30	
IN	SW/LED	04/04	43/04	
OUT	SW/LED	17/17	56/17	
RELOOP	SW/LED	1D/1D	5C/1D	
REV	SW/LED	0A/0A	49/0A	
CLEAR	SW/LED	08/08	47/08	
SAVE	SW/LED	0E/0E	4D/0E	
SAMPLE	SW/LED	2C/2C	6B/2C	
KEY LOCK	SW/LED	1E/1E	5D/1E	
< >	SW/LED (Fx SYNC)	0C/0C	4B/0C	
<	SW/LED (1/4)	19/19	58/19	
>	SW/LED (4/1)	12/12	51/12	
WHEEL MODE	SW/LED (VINYL)	24/24	63/24	
TEMP RANGE	SW/LED (10)	2A/2A	69/2A	
1	SW/LED/LED2	14/14/31	53/14/31	

MIDI Map (Hexadecimal)

SW name	Type	MIDI	MIDI2 (Hold SHIFT)	Remarks
2	SW/LED/LED2	1/A/1A/32	59/1A/32	
3	SW/LED/LED2	20/20/33	5F/20/33	
4	SW/LED/LED2	26/26/34	65/26/34	
1/2 (RED)	LED	35	35	
1 (LED)	LED	36	36	
2 (LED)	LED	37	37	
4 (LED)	LED	38	38	
8 (LED)	LED	39	39	
16 (LED)	LED	3A	3A	
1/2 (GREEN)	LED	3B	3B	
3/4 (GREEN)	LED	3C	3C	
1/1 (GREEN)	LED	3D	3D	
2/1 (GREEN)	LED	3E	3E	
TEMP RANGE 6	LED	3F	3F	
TEMP RANGE 16	LED	40	40	
LOOP SET	LED	41	41	
A. CUE SCRATCH	LED	42	42	
CDJ	LED	43	43	
DISC EJECT	SW	0D	4C	
SGL/CTN	SW	01	40	
TIME	SW	1F	5E	
SHIFT	SW	45	--	
MENU	SW	16	55	
<<	SW	1C	5B	
>>	SW	22	61	
CUE PLAY	SW	28	67	
TAP	SW	07	46	
PITCH BEND -	SW	03	42	
PITCH BEND +	SW	09	48	

CC-ABSOLUTE (VR):

Control Change messages are sent with status 0xBn, where n is the channel, for the specified CC controller. Thus the controller MIDI ID is indicated with the channel along with the CC number. The value from 0x00 to 0x7F, directly related to the location of the controller.

CC-RELATIVE (ENC):

Control Change messages are status 0xBn, where n is the channel, for the specified CC controller. Thus the controller MIDI ID is shown with the channel along with the CC number. The value from 0x40 to indicate the change in the controller. This is an offset to 0x40 "one's complement" notation.

A message with data 0x43 indicates a positive change of 3.

A message with data 0x31 indicates a negative change of 15.

SWITCH ON/OFF (SW, CENTER, CW & CCW):

These messages are used for switches.

Control Change messages are sent with status 0x9n, SWITCH ON and OFF value are 0x7F and 0x00, where n is the channel.

LED ON/OFF (LED):

These messages are used for LED.

Control Change messages are sent with status 0x9n, LED ON and OFF value are 0x7F and 0x00, where n is the channel.

Specifications

APPLICATION:		Multi Media Controller CD/USB/MIDI		
POWER:		AC100-240V, 50/60Hz, 19Watts		
DIMENSION:		296 (D) X 218 (W) X 103.5 (H) mm		
WEIGHT:		2.5 kg		
AUDIO CHARACTERISTICS: (CD Test disc: TCD-782; USB Test format: MP3, 128kbps; load=100K ohm)				
ITEM		TYPICAL	LIMIT	CONDITION
(1) OUTPUT LEVEL	CD	2V +/-0.5dB	2V +/-1dB	1KHz, 0dB
	USB1,2	1.85V +/-0.5dB	1.85V +/-1dB	
(2) CHANNEL BALANCE		WITHIN 0.2dB	WITHIN 1dB	1KHz, 0dB
(3) FREQUENCY RESPONSE	CD	17-20KHz +/-0.4dB	17-20KHz +/-1dB	0dB OUTPUT
	USB1,2	17-16KHz +/-0.2dB	17-16KHz +/-1dB	
(4) DE-EMPHASIS	CD	-20dB +/-0.2dB	-20dB +/-1dB	16KHz,-20dB
(5) CHANNEL SEPARATION(*2)	CD, USB1,2	91dB	85dB	1KHz, 0dB
(6) THD+N (*1)	CD	0.006%	0.01%	1KHz, 0dB
	USB1,2	0.007%	0.01%	1KHz, 0dB
(7) S/N RATIO (*2)		126dB	90dB	1KHz, 0dB
(8) PHONES OUTPUT LEVEL	CD	0.35V +/-0.5dB	0.35V +/-1dB	1KHz, -20dB
(9) DIGITAL OUTPUT LEVEL		0.5 +/-0.03V P-P	0.5 +/-0.1V P-P	75 ohm load
Note : *1: With 20KHz low pass filter				
*2: With 20KHz low pass filter, "IHF-A" weighted				

MP3 FORMAT		
Disc Format	Applicable file extensions	mp3 . MP3 . mP3 . Mp3
	ISO9660	max. 63 characters
	Joliet	max. 63 characters
	CD-ROM sector format	mode-1 only
	Max. number of Folders	255
	Max. number of files	max. 999 files (* note #1)
USB Format	File System	FAT 12/16/32
	Applicable file extensions	mp3. MP3. mP3. Mp3
	Max. number of Folders	999
	Max. number of files	max. 999 files
MP3 Format	MPEG 1 Layer 3 standard (ISO/IEC 11172-3), which provides for single channel ('mono') and two-channel ('stereo') coding at sampling rates of 32, 44.1 and 48kHz.	32/40/48/56/80/96/112/128/160/192/224/256/320 kbps Xing/VBRI VBR
	MPEG 2 Layer 3 standard (ISO/IEC 13818-3), which provides for similar coding at sampling rates of 16, 22.05 and 24 kHz.	32/40/48/56/64/80/96/112/144/160 Kbps Xing/VBRI VBR
	MPEG 2.5 Layer 3 standard, which provides for similar coding at sampling rates of 8, 11.025 and 12 kHz.	32/40/48/56/64/80/96/112/144/160 Kbps Xing/VBRI VBR
Disc Writing Method	Disc at Once and Track at Once	
	Multi Session	If the 1st session is CDDA, you can playback Only CDDA track, If the 1st session is MP3, you can playback only MP3 file.

Note #1: max.255 files each folder

To register your Stanton product on-line, please visit:
http://www.stantondj.com/v2/login_product.asp

Model Type _____ Model No. _____ Serial No. _____

Date of Purchase _____

Dealer's Name _____

Your Name _____

Your Address _____

E-mail Address _____

Please check this box to receive updates and important information about Stanton via e-mail.

How did you hear about us?

Dealer Magazine Friend Web Other (Please specify) _____

stanton
www.stantondj.com

Thank you for choosing Stanton!

Your satisfaction is extremely important to us. We proudly stand behind the quality of our work and appreciate that you put your trust in us. Registering your product will help us guarantee that you are kept up to date on our latest advances.

Warranty Service in the United States:

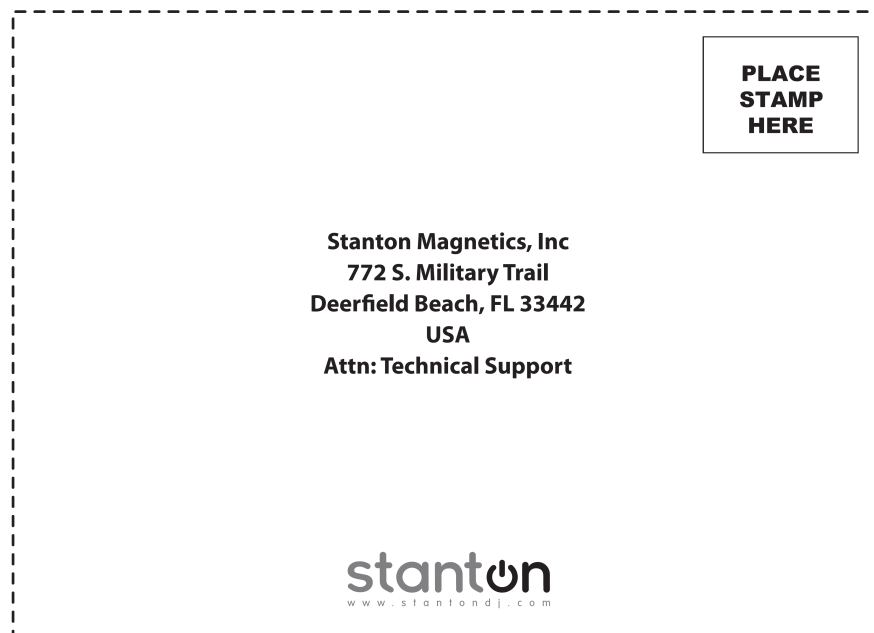
Please contact Stanton Tech Support BEFORE sending your product. In some cases, our Tech Support team can resolve your problem immediately, avoiding down time due to shipping delays. However, if Tech Support determines that a repair is needed; please call us at +1 954.316.1500 (Option 3) to obtain a Return Authorization Number (RA#) PRIOR to shipping your product to us.

Warranty Service outside the United States:

To initiate a warranty repair, please contact the authorized Stanton dealer from whom you purchased your product, and follow the dealer's return policy.

Save your shipping boxes and all packaging materials!

For the fastest and safest product return to Stanton, please use the original shipping carton and packaging materials. Stanton cannot be responsible for any damages incurred during the shipping process due to poor or inadequate packing. Please remember to insure your shipment!



Stanton Warranty

Through Stanton's authorized dealers around the World, Stanton, or one of Stanton's authorized distributors outside the U.S., will, without charge, repair or replace, at the sole discretion of the entity responsible for making the repair or providing the replacement, any Stanton merchandise proved defective in material or workmanship for a period of one (1) year following the date of original purchase. Exceptions to this warranty are as noted below:

The warranty for mechanical parts which are subject to wear and tear are limited to either the earlier of thirty (30) days following the date of original purchase or for 10,000 cycles for switches.

Stanton will warrant all replacement parts and repairs for ninety (90) days from the date of original shipment. Repairs made necessary by reason of misuse, alteration, normal wear, or accident are not covered under this warranty.

Returns

Authorized Stanton dealers are only authorized to sell and distribute merchandise within a specific country. All goods requiring warranty repair or replacement must be returned (freight prepaid if not hand-delivered) to the authorized Stanton dealer from whom the merchandise was purchased and in the same country where the merchandise was purchased. For purposes of purchases made via the Internet, the merchandise must be returned to the authorized Stanton dealer in the country where the authorized Stanton dealer which sold the merchandise to purchaser is located and not the authorized Stanton dealer in the country where the purchaser is located or the country in which the merchandise was received. Any returns to a non-authorized dealer or to an authorized Stanton dealer not in the same country as the merchandise was intended to be sold or as set forth above will void this warranty.

To initiate a warranty repair, you must contact the authorized Stanton dealer from whom you purchased the merchandise, and follow such authorized Stanton dealer's return policy.

Stanton assumes no risk and shall be subject to no liability for damages or loss resulting from the specific use or application made of the merchandise. Stanton's liability for any claim, whether based on breach of contract, negligence, infringement of any rights of any party, or product liability, and relating to the merchandise shall not exceed the price received by Stanton from your purchase of such merchandise. In no event will Stanton be liable for any special, incidental or consequential damages (including loss of use, loss of profit and claims of third parties) however caused, whether by the negligence of Stanton or otherwise. To the extent permitted by law and except as otherwise provided above, Stanton disclaims any express or implied warranties of merchantability or fitness for a particular purpose.

The above warranty provides you with specific legal rights. You may also have additional rights, which are subject to variation from state to state and country to country.

If there is a dispute regarding the warranty of merchandise that does not fall under the warranty conditions stated above, please include a written explanation with the merchandise when returned pursuant to the terms and conditions set forth herein.



Copyright © 2011 Stanton Magnetics, Inc.

CMP.800 and STR8.150 are trademarks or registered trademarks of the Stanton Group.
All other trademarks are property of their respective owners, who are in no way affiliated with Stanton DJ or SC System products. All information included in the User Manual is subject to change without notice.

LITS00074 04/05/2011

Free Manuals Download Website

<http://myh66.com>

<http://usermanuals.us>

<http://www.somanuals.com>

<http://www.4manuals.cc>

<http://www.manual-lib.com>

<http://www.404manual.com>

<http://www.luxmanual.com>

<http://aubethermostatmanual.com>

Golf course search by state

<http://golfingnear.com>

Email search by domain

<http://emailbydomain.com>

Auto manuals search

<http://auto.somanuals.com>

TV manuals search

<http://tv.somanuals.com>