

3.5in SuperSpeed USB 3.0 SATA Hard Drive Enclosure w/ Fan

SAT3510BU3



*actual product may vary from photos

DE: Bedienungsanleitung - de.startech.com

FR: Guide de l'utilisateur - fr.startech.com

ES: Guía del usuario - es.startech.com

IT: Guida per l'uso - it.startech.com

NL: Gebruiksaanwijzing - nl.startech.com

PT: Guia do usuário - pt.startech.com

For the most up-to-date information, please visit: www.startech.com

Manual Revision: 01/31/2013

Download from Www.Somanuals.com. All Manuals Search And Download.

FCC Compliance Statement

This equipment has been tested and found to comply with the limits for a Class B digital device, pursuant to part 15 of the FCC Rules. These limits are designed to provide reasonable protection against harmful interference in a residential installation. This equipment generates, uses and can radiate radio frequency energy and, if not installed and used in accordance with the instructions, may cause harmful interference to radio communications. However, there is no guarantee that interference will not occur in a particular installation. If this equipment does cause harmful interference to radio or television reception, which can be determined by turning the equipment off and on, the user is encouraged to try to correct the interference by one or more of the following measures:

- Reorient or relocate the receiving antenna.
- Increase the separation between the equipment and receiver.
- Connect the equipment into an outlet on a circuit different from that to which the receiver is connected.
- Consult the dealer or an experienced radio/TV technician for help.

Use of Trademarks, Registered Trademarks, and other Protected Names and Symbols

This manual may make reference to trademarks, registered trademarks, and other protected names and/or symbols of third-party companies not related in any way to StarTech.com. Where they occur these references are for illustrative purposes only and do not represent an endorsement of a product or service by StarTech.com, or an endorsement of the product(s) to which this manual applies by the third-party company in question. Regardless of any direct acknowledgement elsewhere in the body of this document, StarTech.com hereby acknowledges that all trademarks, registered trademarks, service marks, and other protected names and/or symbols contained in this manual and related documents are the property of their respective holders.

Table of Contents

Introduction	1
Packaging Contents	1
System Requirements.....	1
Installation	3
Hardware Installation	3
Driver Installation.....	3
Verifying Installation	4
Using the Enclosure	4
Specifications	6
Technical Support	7
Warranty Information	7

Introduction

The StarTech.com SAT3510BU3 USB 3.0 External Hard Drive Enclosure lets you connect a 3.5" SATA hard drive through USB 3.0. A cutting edge external storage solution that lets you harness the speed and performance supported by the SuperSpeed USB interface. Supporting data transfer rates of up to 5 Gbps, 10x that of USB 2.0, and 60% faster than SATA 3Gbps eSATA, plus backward compatible with USB revisions 2.0 (480Mbps) and 1.1 (12Mbps), so the enclosure can be used with older systems that don't support USB 3.0 yet.

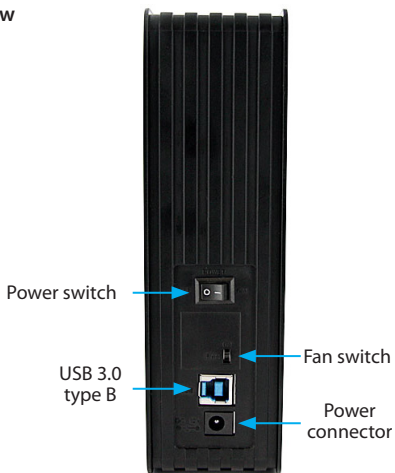
Packaging Contents

- SAT3510BU3 enclosure
- USB 3.0 A-B cable
- Universal Power Adapter
- 3 x Power Adapter plugs (NA, UK, EU)
- Foam pad
- Instruction Manual

System Requirements

- Internal 3.5" SATA compatible storage drive
- USB enabled computer system with available port
- Microsoft® Windows® 2000/XP/Server 2003/Vista/Server 2008 R2/7 (32/64-bit) or Apple® Mac OS® X or Linux®

Rear View



Side View



Installation

WARNING: Hard drives require careful handling, especially when being transported. If you are not careful with your hard disk, lost data may result. Always handle your hard drive and storage device with caution.

Hardware Installation

1. Set the enclosure on a flat surface, with the cooling fan facing downwards.
2. On the top panel, remove the two small screws at the corners. Remove the top panel.
3. Located at the opposite end from the internal SATA connectors is a small plastic wedge. Flip the wedge up and out of the enclosure.
4. Place the 3.5" SATA hard drive into the enclosure and then slide it into the SATA connectors.
5. Flip the wedge down again, to secure the hard drive. For thinner hard drives, an optional, thicker foam pad is included.
6. Place the top panel back on to the enclosure and fasten the two corner screws.
7. Connect the external power adapter to the enclosure and flip the power switch to the "1" position. The enclosure and hard drive will power up.
8. Connect the USB cable from the enclosure to the computer system.

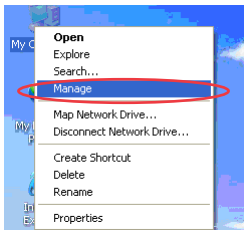
Driver Installation

No driver installation is required for USB enabled operating systems, as this enclosure uses natively installed drivers. Supported operating systems should automatically detect and install the enclosure.

Verifying Installation

Windows 2000/XP/Server 2003/Vista/7

From the main desktop, right-click on “My Computer” (“Computer” in Vista/7), then select Manage. In the new Computer Management window, select Device Manager from the left window panel.

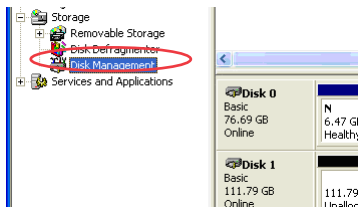


Double-click on the “Disk Drives” option. A new disk drive should be listed under this category. It will typically contain the make/model of the hard drive you have installed in the enclosure.

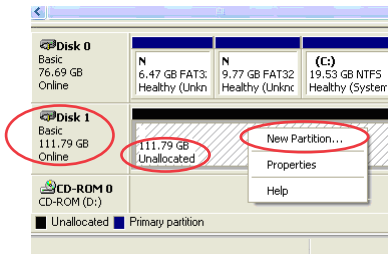
Using the Enclosure

Windows 2000/XP/Vista/7

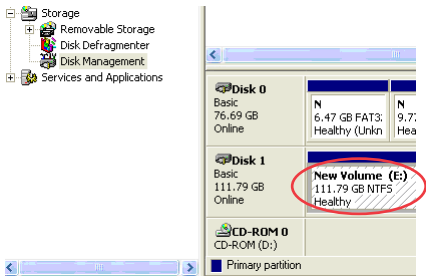
If you are using a brand new hard drive that does not contain any data, then you will first need to prepare the hard drive for use. From the main desktop, right-click on “My Computer” (“Computer” in Vista/7), then select Manage. In the new Computer Management window, select Disk Management from the left window panel.



Locate the Disk that says it is “Unallocated” (check hard drive capacity to confirm it’s the correct hard drive) and then right-click in the section that says “Unallocated” and select “New Partition”.



The New Partition Wizard will appear. Follow the instructions in the wizard to complete setting up the drive. Once complete, the Disk should show up as “Healthy” with a drive letter assigned (ie. E:). This drive letter should now appear within My Computer.



If you are installing a hard drive that already has data on it, then after plugging it in, the drive should automatically show up with a drive letter assigned within My Computer.

Specifications

Bus Interface	USB 3.0
Chipset ID	ASMedia ASM1051
Connectors	1 x USB 3.0 type B 1 x DC Power
Fans	1 x 80mm
LEDs	1 x Power/Activity
Maximum Data Transfer Rate	USB 3.0: 5Gbps
Compatible Hard Drives	3.5" SATA drive (internal) up to 2TB capacity
Power Adapter	12VDC, 2A, center positive
Operating Temperature	0°C ~ 60°C (32°F ~ 140°F)
Storage Temperature	0°C ~ 70°C (-4°F ~ 158°F)
Humidity	10 ~ 90% RH
Dimensions	143.0mm x 52.1mm x 180.0mm
Weight	580g
Compatible Operating Systems	Windows 2000/XP/Server 2003/Vista/ Server 2008 R2/7 (32/64), Mac OS X, Linux

Technical Support

StarTech.com's lifetime technical support is an integral part of our commitment to provide industry-leading solutions. If you ever need help with your product, visit www.startech.com/support and access our comprehensive selection of online tools, documentation, and downloads.

For the latest drivers/software, please visit www.startech.com/downloads

Warranty Information

This product is backed by a two year warranty.

In addition, StarTech.com warrants its products against defects in materials and workmanship for the periods noted, following the initial date of purchase. During this period, the products may be returned for repair, or replacement with equivalent products at our discretion. The warranty covers parts and labor costs only. StarTech.com does not warrant its products from defects or damages arising from misuse, abuse, alteration, or normal wear and tear.

Limitation of Liability

In no event shall the liability of StarTech.com Ltd. and StarTech.com USA LLP (or their officers, directors, employees or agents) for any damages (whether direct or indirect, special, punitive, incidental, consequential, or otherwise), loss of profits, loss of business, or any pecuniary loss, arising out of or related to the use of the product exceed the actual price paid for the product. Some states do not allow the exclusion or limitation of incidental or consequential damages. If such laws apply, the limitations or exclusions contained in this statement may not apply to you.

Hard-to-find made easy. At StarTech.com, that isn't a slogan. It's a promise.

StarTech.com is your one-stop source for every connectivity part you need. From the latest technology to legacy products — and all the parts that bridge the old and new — we can help you find the parts that connect your solutions.

We make it easy to locate the parts, and we quickly deliver them wherever they need to go. Just talk to one of our tech advisors or visit our website. You'll be connected to the products you need in no time.

Visit www.startech.com for complete information on all StarTech.com products and to access exclusive resources and time-saving tools.

StarTech.com is an ISO 9001 Registered manufacturer of connectivity and technology parts. StarTech.com was founded in 1985 and has operations in the United States, Canada, the United Kingdom and Taiwan servicing a worldwide market.

Free Manuals Download Website

<http://myh66.com>

<http://usermanuals.us>

<http://www.somanuals.com>

<http://www.4manuals.cc>

<http://www.manual-lib.com>

<http://www.404manual.com>

<http://www.luxmanual.com>

<http://aubethermostatmanual.com>

Golf course search by state

<http://golfingnear.com>

Email search by domain

<http://emailbydomain.com>

Auto manuals search

<http://auto.somanuals.com>

TV manuals search

<http://tv.somanuals.com>