



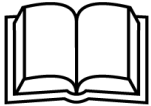
expect different™.

STAR TRAC
14410 Myford Road
Irvine, CA 926060 USA

WORK INSTRUCTIONS, E-TRx / E-TRxe INSTALLATION



GENERAL



Before using this product, it is essential to read ALL installation Instructions and this ENTIRE operations manual; the manual describes equipment setup and instructs members on how to use it correctly and safely.

TOOLS REQUIRED

1. Hex (Allen) key, 1/4" (Included)
2. Hex (Allen) key, 5/32" (Included)
3. Screwdriver (blade-tip), 3/32" (Included)
4. Screwdriver, Philips, #2 (Included)
5. Torque wrench (not included)

FACTORY CERTIFIED INSTALLER

If you are a Factory Certified Installer you must:

- Adhere to all torque and assembly specifications.
- Use a CALIBRATED TORQUE WRENCH with the necessary hex key sockets
- NOT USE a powered drill, powered driver or powered impact tool for any part of the assembly.
- Complete the assembly checklist is completed on each Star Trac product.
- Complete the final programming, functional and cosmetic checklists for each Star Trac product.

Copyright 2008. Star Trac by Unisen, Inc. Star Trac Fitness, Star Trac®, and the Star Trac Logo are registered trademarks of Unisen Inc. All rights reserved, including those to reproduce this book or parts thereof in any form without first obtaining written permission from Star Trac.

iPod® is a registered trademark of Apple, Inc.

MYE® is a registered trademark of MYE Entertainment LLC.

Every effort has been made to keep this information current; however, periodically, changes are made to the information herein, and these changes will be incorporated into new editions of this publication. All product names and logos are trademarks of their respective owners. Printed in the USA.

UNPACKING INSTRUCTIONS



Step 1.
Lay the unit in the area where it is going to be assembled and remove the straps.



Step 2.
Remove the top cover.



Step 3.
Remove the side box.



Step 4.
Lay all boxes on the floor and verify that all components are included (see next page for details).



Step 5.

Verify the following components are included in box one:

- Left handrail (p/n 020-7179).
- Right handrail (p/n 020-7181).
- Front neck assembly.

Step 6.

Verify the following components are included in box two:

Top rail with electronic display assembly.



Step 7.

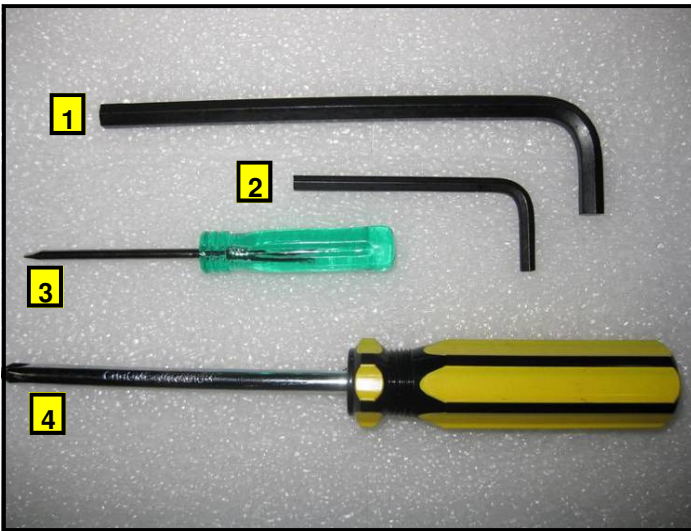
Verify components in box two (continued):

1. Neck cover.
2. Display console's top back cover (p/n 020-7074).
3. Neck grommet.
4. Power cable.
5. Owner's manual with warranty registration card.
6. Hardware kit.

Step 8.

Verify components in box two (continued):

- Display console's upper back cover (p/n 020-7069).
- Display console's lower back cover (p/n 020-7070).



Step 9.

Verify the following tools are included in the hardware kit :

Item	Description	QTY
1	Hex (Allen) key, 1/4"	1
2	Hex (Allen) key, 5/32"	1
3	Screwdriver (blade-tip), 3/32"	1
4	Screwdriver, Phillips, #2	1

Step 10.

Verify hardware included in the hardware kit:

Item	Description	QTY
1	Screw 5/16"-18x3.0", Socket Head Cap	2
2	Screw 5/16"-18x1.0", Socket Head Cap	12
3	Screw 1/4"-28 3/8", Button Head Socket Cap	5
4	Screw #10-24 x 3/4, Truss Head,	7
5	Screw M4x.7, 19mm, Pan Head,	16
6	Washer, Flat, 5/16" I.D. x 1.2" O.D.	16
7	Washer, Split Lock, 5/16"	16



Step 11.

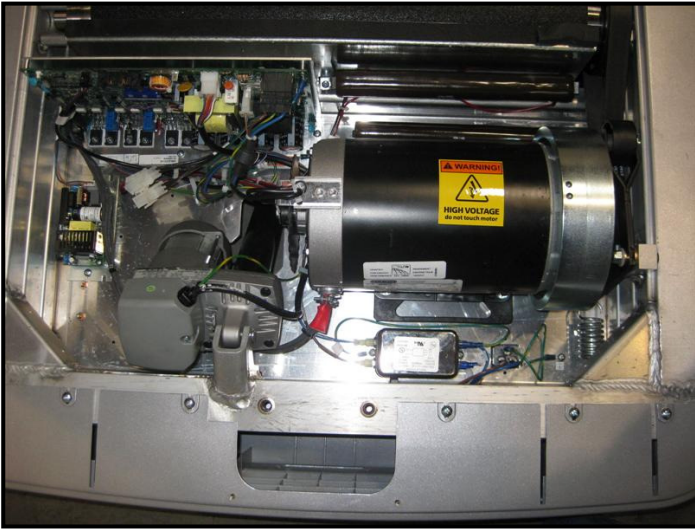
Remove the packaging materials from the frame assembly with motor shroud.

Step 12.

With a helper, lift the treadmill frame assembly from the shipping crate platform and place it in the location where it will be used. Make sure the unit is placed near a power outlet.

Caution: The motor shroud end of the frame assembly is very heavy. It may require two people to lift this end when moving the frame assembly.

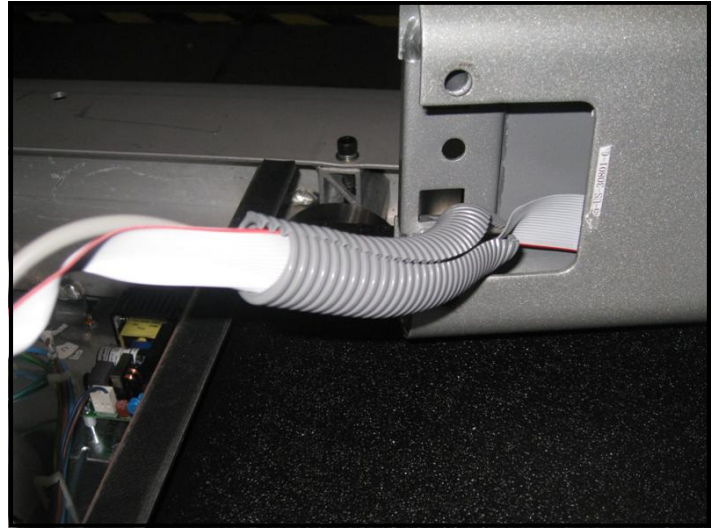
INSTALLATION INSTRUCTIONS



Step 1.

Lift the front motor shroud off of the frame assembly.

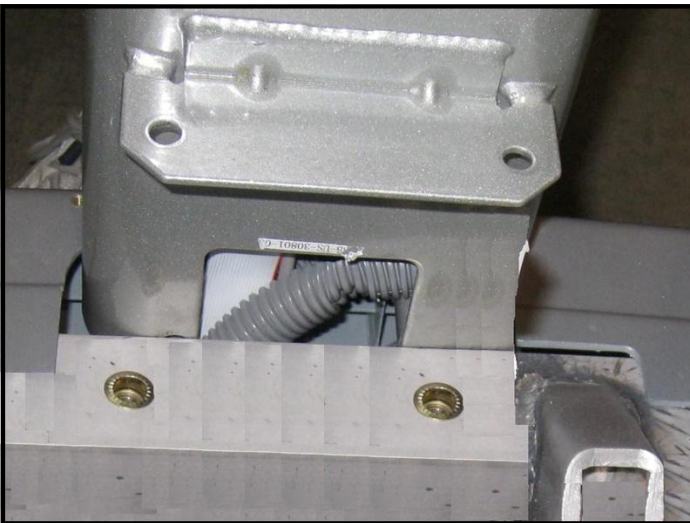
Note: Make sure the shroud is properly stored to prevent damage.



Step 2.

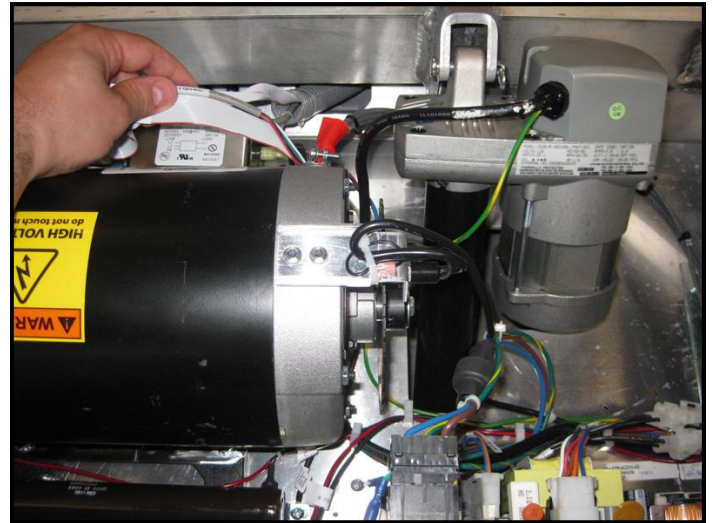
Remove the neck form shipping box and verify the cables are properly fed through attached protective tube in the base of the neck.

Note: The tube will protect cables from getting pinched during installation and will make it easier to route them through service opening.



Step 3.

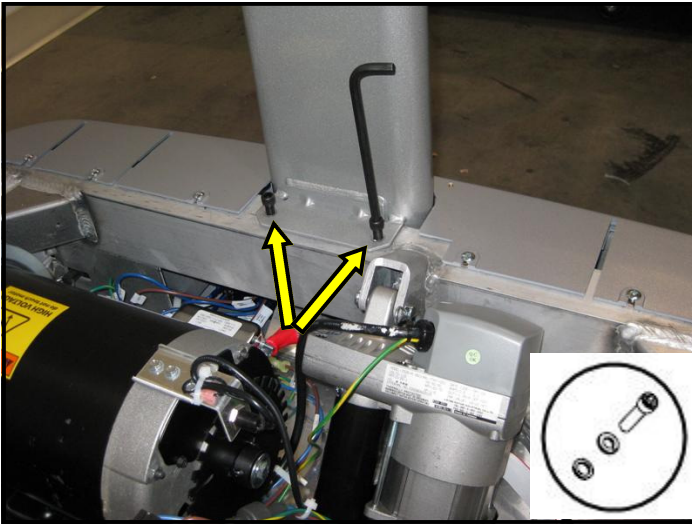
Position neck close to the service opening in the front of treadmill so the cables go into the opening first.



Step 4.

Route all cables from neck into motor compartment through lower neck service opening.

Caution: Make sure not to pinch any cables.



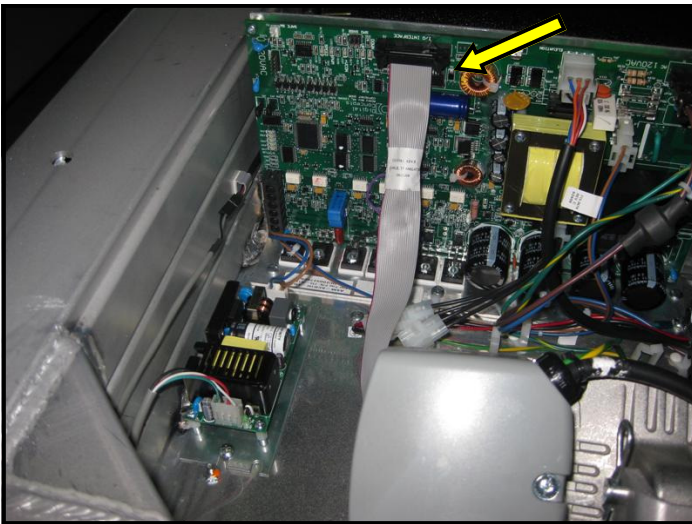
Step 5.

Insert neck into place, then align the top holes. Using the 1/4" Hex key, fasten the neck to the frame with (2) 5/16-18 x 1.0" socket head screws, (2) 5/16 washers and (2) lock washers. **DO NOT** fully tighten yet.



Step 6.

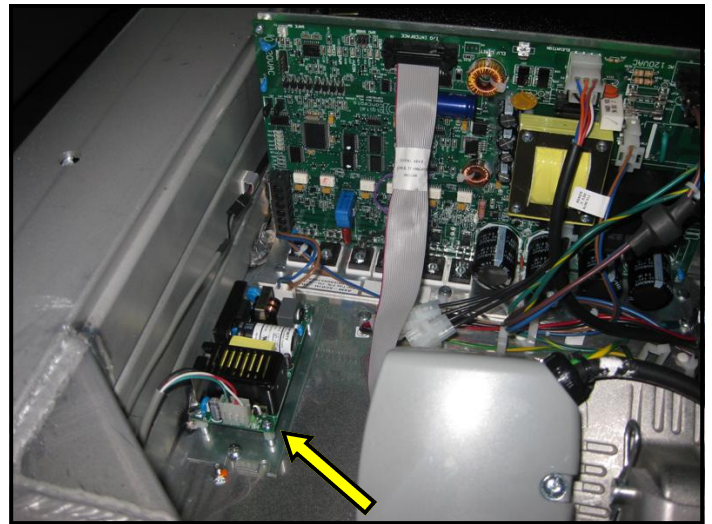
Align the front holes and fasten with (2) 5/16-18 x 3.0", (2) 5/16 washers and (2) lock washers. **DO NOT** fully tighten yet.



Step 7.

Route the main I/O cable (p/n 715-3781) behind the elevation motor and connect it to I/O interface J2 Connector on the Motor Control Board.

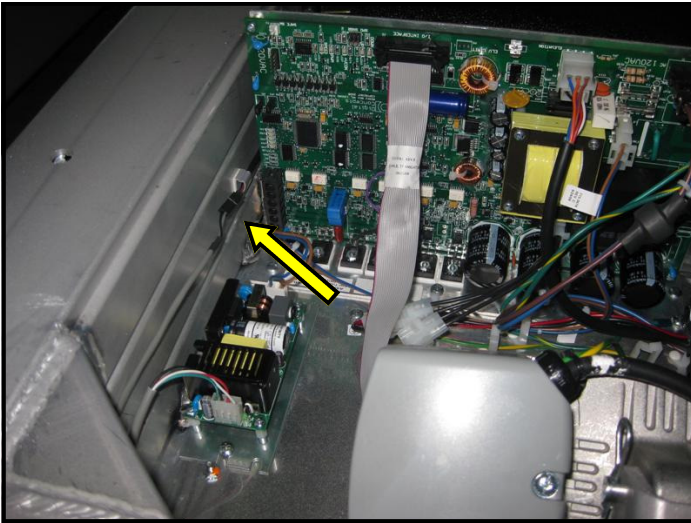
Note: Make sure the main I/O cable is routed away from all moving parts, including the flywheel.



Step 8.

Route the fan power cable (p/n 715-3678) behind the elevation motor and connect it to fan power supply board.

Note: Make sure the fan power cable is routed away from all moving parts, including the RPM disk.



Step 9. (for E-TRxe model only)

Route the user detect cable behind the elevation motor and plug it into the user detect connector on the left side of frame.

Note: This user-detect cable is only available on the E-TRxe model. If your unit is not equipped with an embedded display; then skip this step.

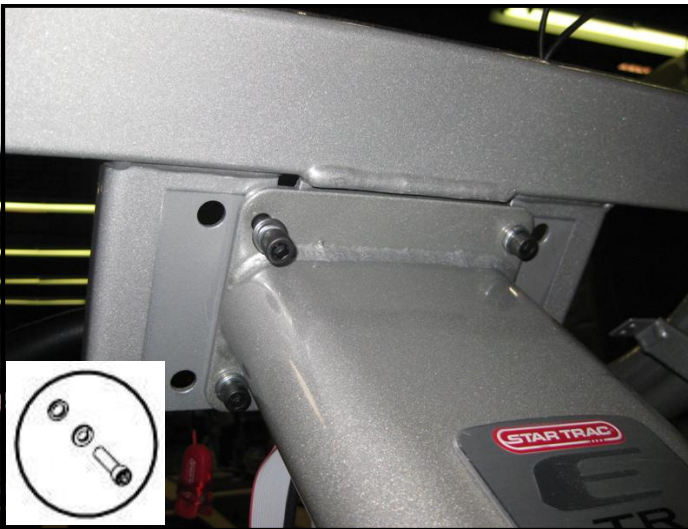


Step 10.

Now install the top display rail. Align the rail's mounting holes with the neck holes.

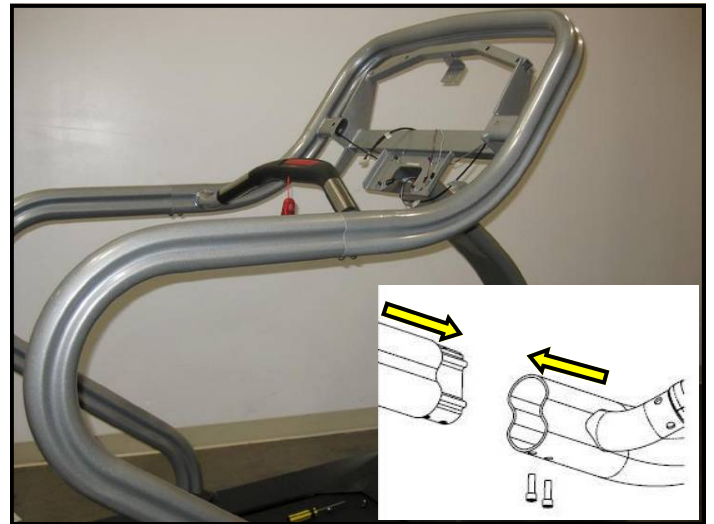
Note: If the electronic display console was assembled to the rail; remove the screws holding it to the rail and store the display for later use.

Hint: If one person is assembling the unit, insert two 5/16 screws into top rail holes and use them to align and temporary hold the rail while you secure it from the back.



Step 11.

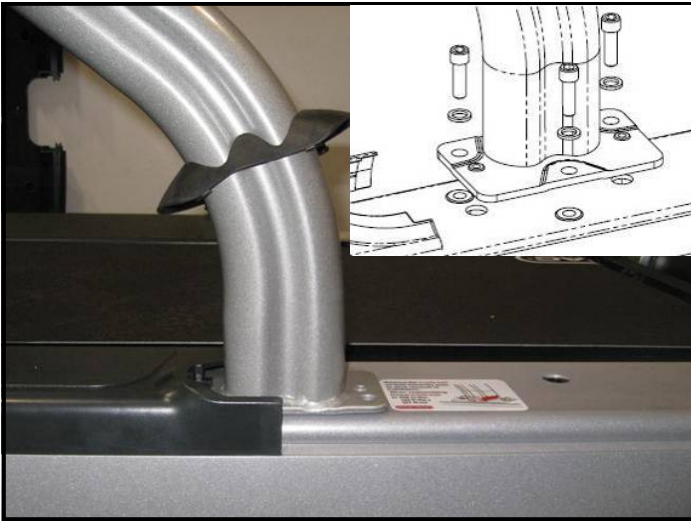
Once the display frame is in place, fasten it to the neck using the 1/4" Hex key with (2) 5/16-18 x 1.0" socket head screws, (2) 5/16 washers and (2) lock washers. **DO NOT** fully tighten yet.



Step 12.

Identify left and right handrails by the part number affixed on the bottom of rails. (left rail's part number is 020-7179, and right rail's part number is 020-7181).

Assemble handrail joint as shown. **DO NOT** fasten the (2) #10 button head socket screws in the upper handrail joints until both handrails are in place.



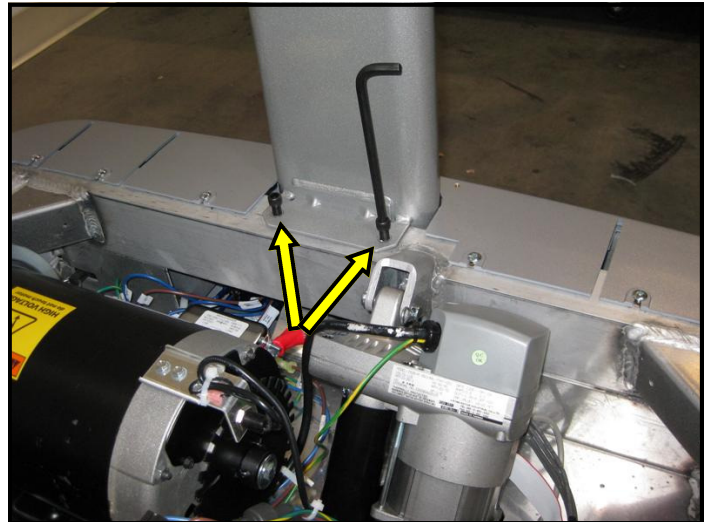
Step 13.
Install left handrail to the frame as shown using (3) 5/16-18 x 1.0" socket head screws and (3) 5/16 washers. Partially lift up the side bed covers, if necessary. Note the orientation of the mounting plate. **DO NOT** tighten screws fully yet. Repeat install for right handrail.



Step 14.
Make sure the gap between the rails is closed and, using the 5/32" Hex key, fasten the (2) #10 button head socket screws. Tighten the screws to a torque value of 45 in-lbs (5.0 Nm). Repeat for the other side.



Step 15.
Now tighten the 2 front neck screws (5/16-18 x 3.0" socket head) to a torque value of 200 in-lbs (22.5 Nm).



Step 16.
Tighten the 2 upper neck screws (5/16-18 x 3.0" socket head) to a torque value of 200 in-lbs (22.5 Nm).



Step 17.

Now tighten the 4 display rail fasteners (where neck is joined with display rail) to a torque value of 200 in-lbs (22.5 Nm).



Step 18.

Tighten handrail fasteners where handrails are joined with treadmill frame. Tighten the screws to a torque value of 200 in-lbs (22.5 Nm). Repeat for the other side.



Step 19.

Verify that the side bed covers join properly to the end caps and that there is no gap between the two parts.



Step 20.

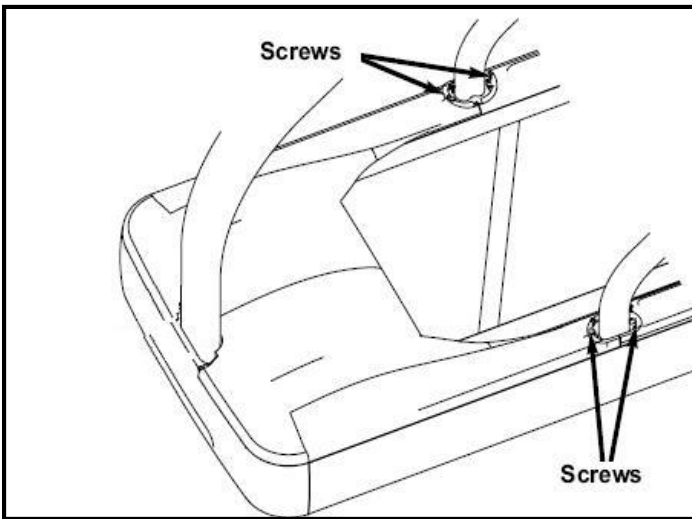
Fasten the side bed covers (left and right) with (1) #10-24 x 3/4 Truss head screw on each side.



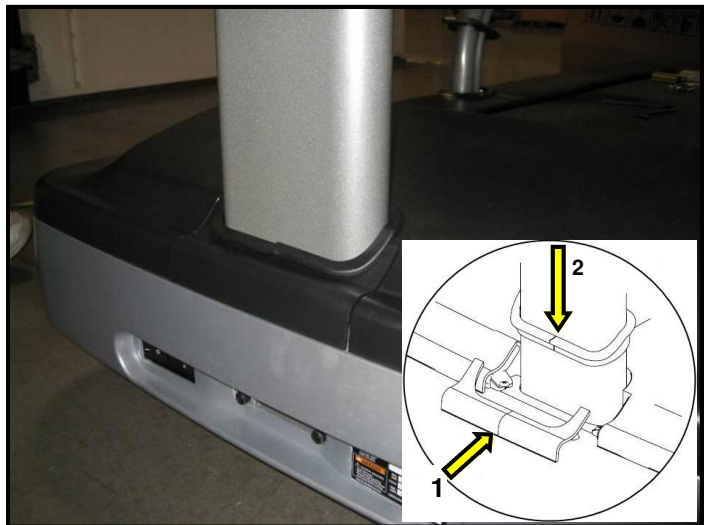
Step 21.
 Re-install the shroud over motor compartment. Slide the back end of shroud in place (where shroud meets rails) then align the screw holes on the front of shroud with the holes on the frame.



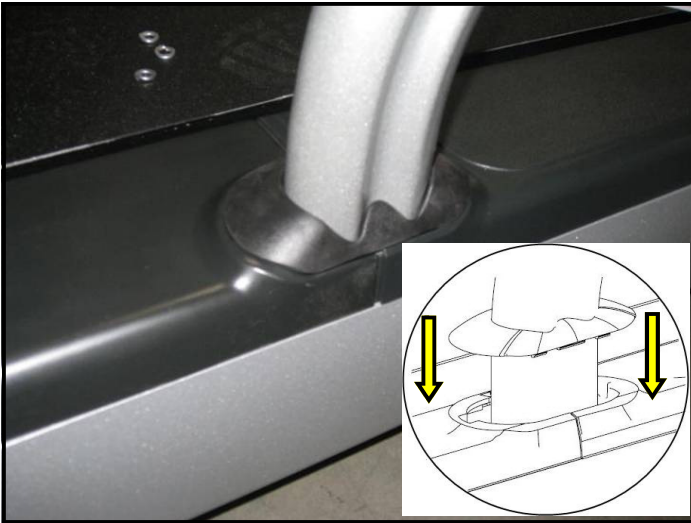
Step 22.
 Secure the front of the motor shroud with (2) #10 Truss head screws.



Step 23.
 Now secure the sides of the motor shroud and the bed covers to the frame with (4) #10 Truss head screws.

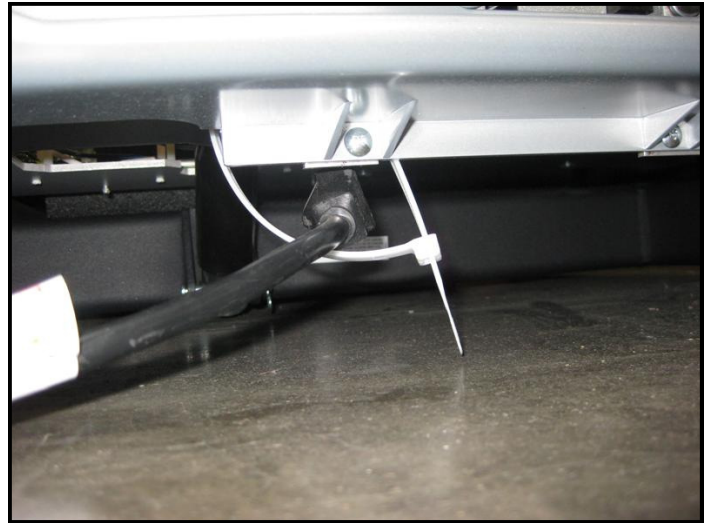


Step 24.
 Snap the front motor shroud cap in place, then slide and install the neck grommet over the cap.



Step 25.
Install left and right handrail grommets. Slide the grommet down the rail and snap it in place over the bed rails covers. Push down and rotate the grommet slightly to seat the tabs into the plastic covers.

Note: Make sure the grommet is tightly secured in place.



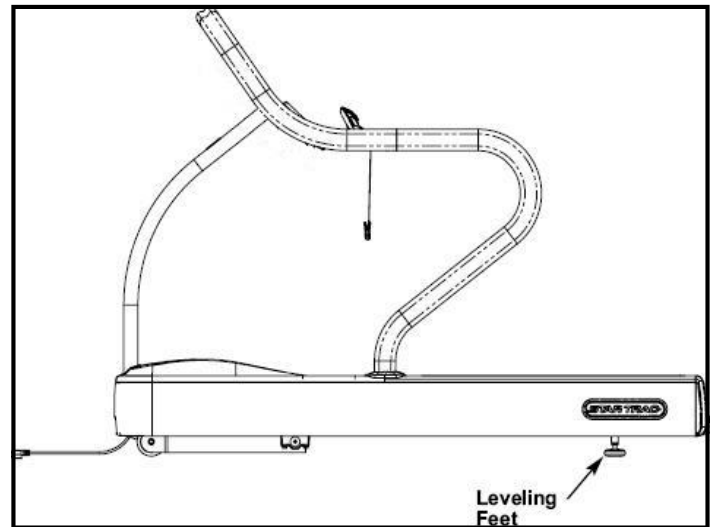
Step 26.
Insert the power cord through the tie wrap loop below motor compartment and connect it to the power receptacle.

Note: Don't turn on the power switch yet.



Step 27.
Secure the power cable to the frame with the tie-strap and cut excess strap.

Caution: Make sure not to damage the power cord.



Step 28.
Position the treadmill in its place. If leveling the treadmill is necessary, loosen the lock nuts of the leveling feet, rotate the feet until the treadmill is stabilized, then re-tighten the lock nuts.

LED DISPLAY CONSOLE INSTALLATION INSTRUCTIONS



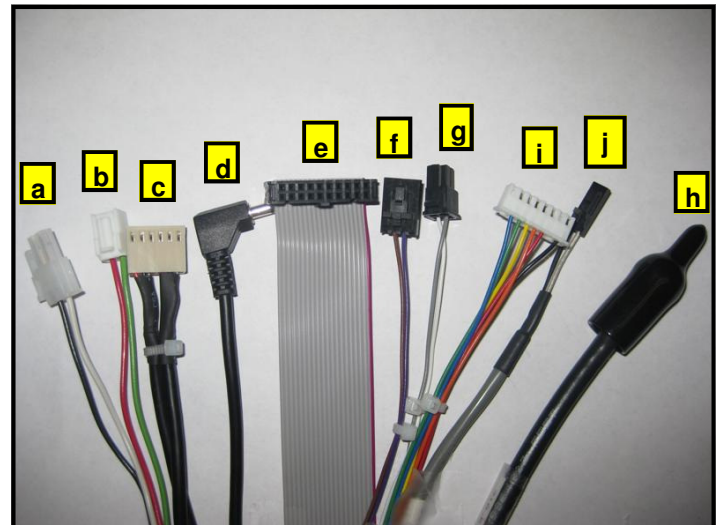
Step 1.

Remove electronic display console from packaging materials.

Note: If you are installing an iPod® Kit, a MYE Entertainment kit or a Personal Viewing Screen kit along with this display, it is recommended that you install the kit's center console before you mount the display onto the frame.

Step 2.

If the back display covers are attached to display console then remove and save them for later use, otherwise proceed to the next step.



Step 3.

Position the display assembly near the top rail while a helper makes the necessary connections.

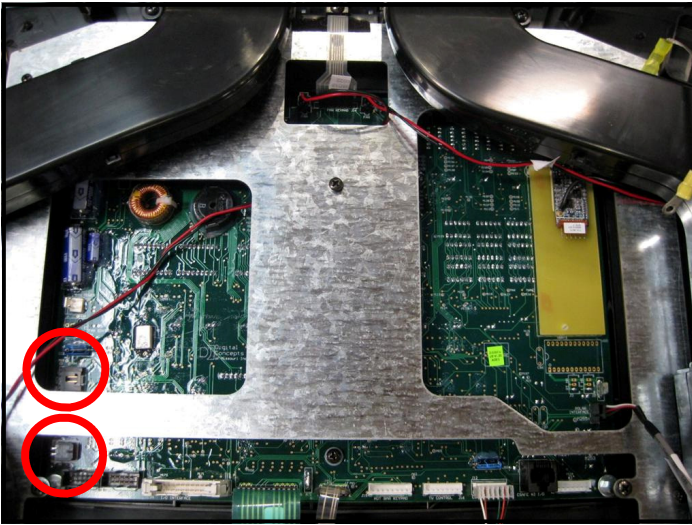
Step 4.

Identify the cables coming from neck and rails:

a. DC power cable	f. Rail stop cable
b. Fan power cable	g. E-Stop cable
c. Contact heart rate cable	h. Coax cable
d. Headphone jack cable	i. hot Bar keypad cable
e. Main I/O cable	j. User-Detect (E-TRxe only)

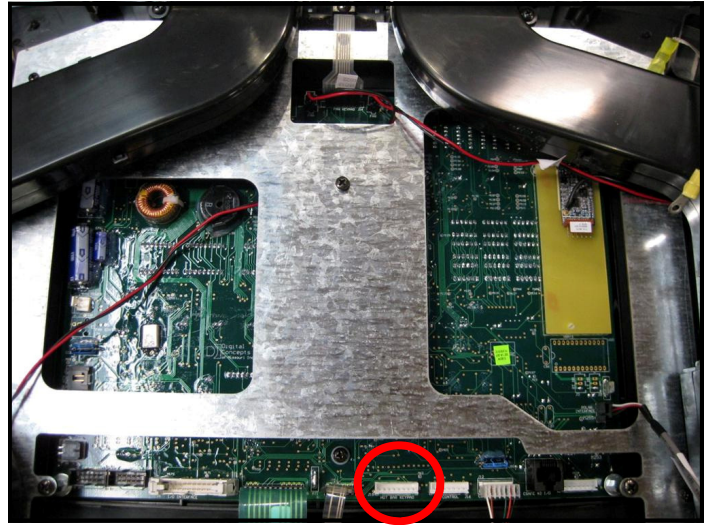
Note 1: If the unit is not equipped with a PVS or iPod® kit, then the PVS power cable and coax cable should be tucked down the neck.

Note 2: The User-Detect cable is only available on the E-TRxe model.



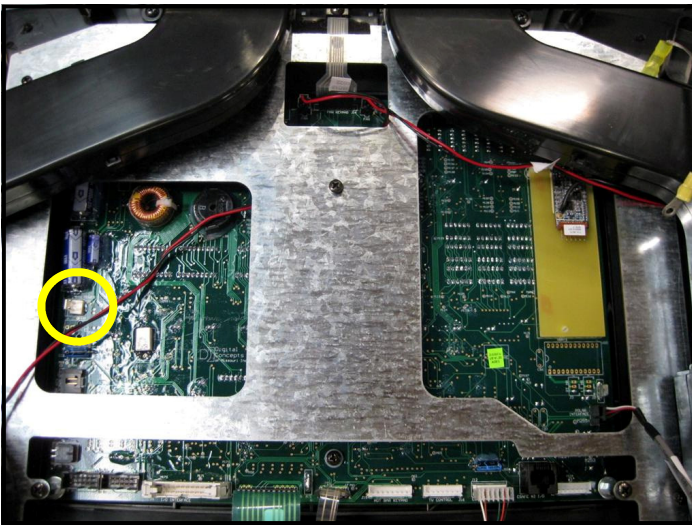
Step 5.

Connect the E-Stop cable (g) to J25 connector on the display board, then connect the rail stop cable (f) to J5 connector on the display board.



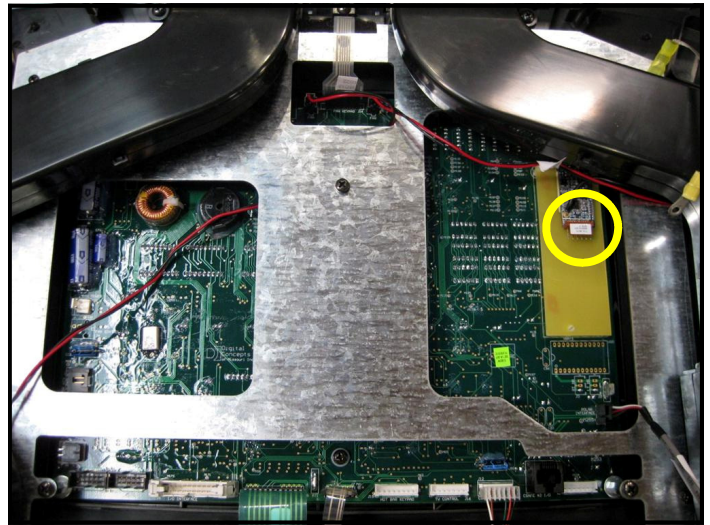
Step 6.

Connect the Hot Bar cable (i) to J15 connector on the display board.



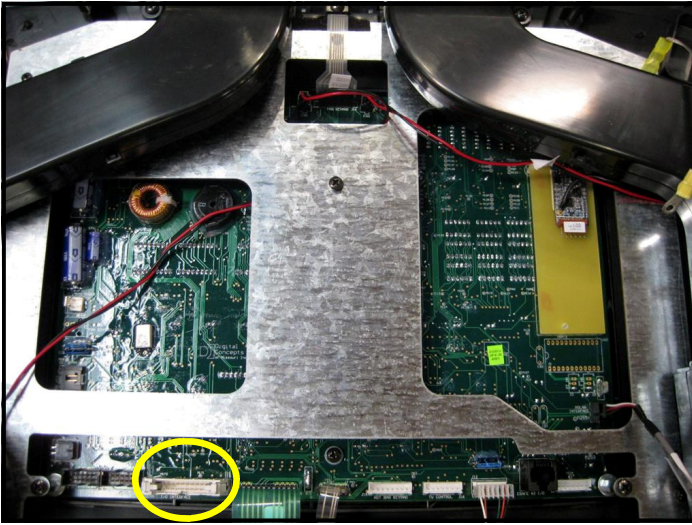
Step 7.

Connect the fan power cable (b) to J20 connector on the display board.

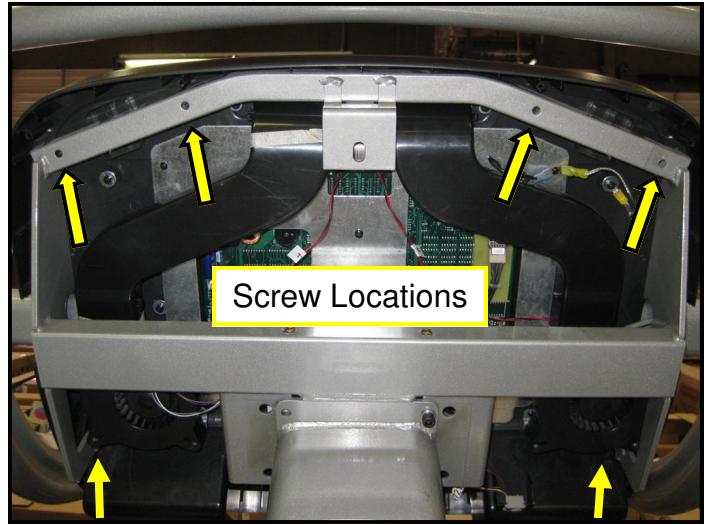


Step 8.

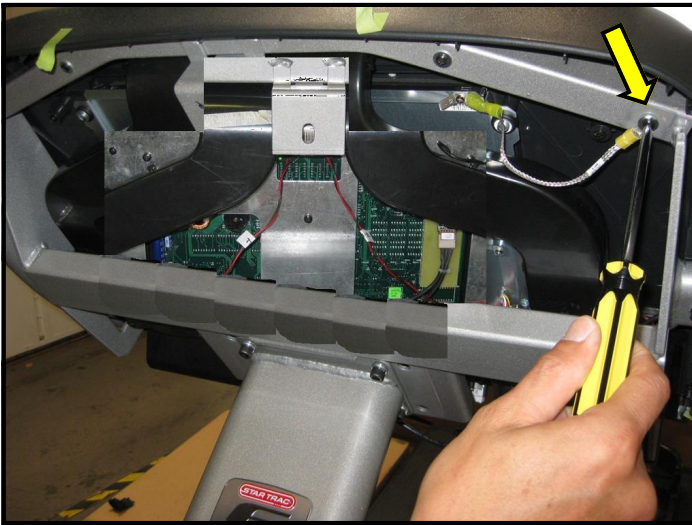
Connect the contact heart rate cable (c) to heart rate board connector on the display board.



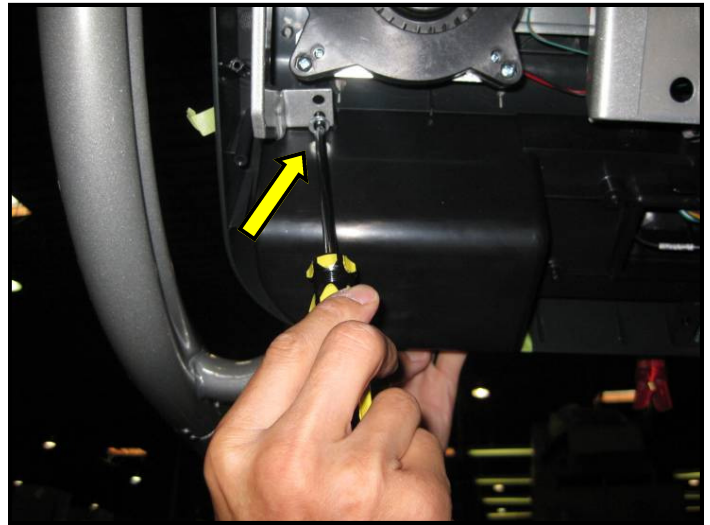
Step 9.
Connect the main I/O cable (e) to J1 connector on the display board.



Step 10.
Mount the display assembly to the frame and note the screw locations (see figure above). Secure top assembly with (4) M4 screws and (4) flat 5/16 washers.



Step 11.
Attach ground strap of the display assembly to the frame with a screw and washer.



Step 12.
Secure the lower left and lower right of the display assembly with (1) M4 screw and (1) flat 5/16 washer on each side.

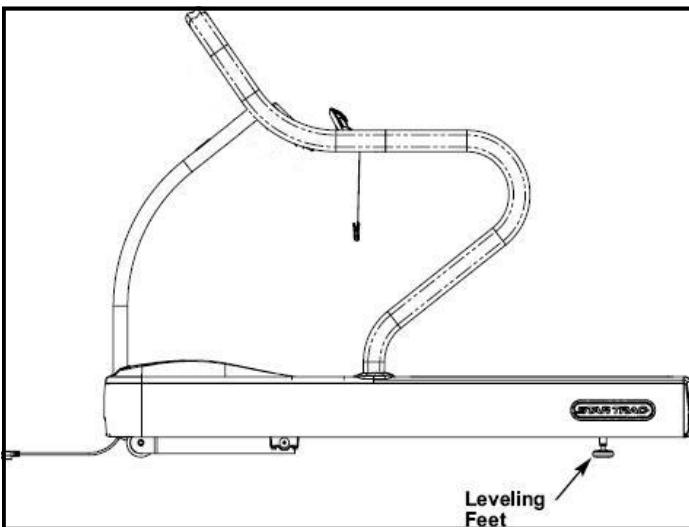


Step 13.
Install the top back cover piece (p/n 020-7074) onto the upper display back cover (p/n 020-7069).



Step 14.
Install the lower display back cover onto display using (6) M4 screws. Next install upper display back cover onto display with (8) of the same screws, tighten all screws.

Caution: Do not use power tools or over torque the screws.



Step 15.
If not performed previously, position the treadmill where you plan to use it. If necessary, level the treadmill using the two adjustable feet under the tail roller. Loosen the lock nuts, rotate the feet until the treadmill is stabilized, and re-tighten the lock nuts.



Step 16.
Turn the power switch on. Perform a visual inspection, and test the features and functions of the unit prior to use.

Note: Refer to the User's Manual for calibration instructions and other settings.

YOU HAVE NOW COMPLETED THE E-TRx TREADMILL INSTALLATION

Use the checklist below to ensure the proper installation of the E-Series Treadmill:

- 1. All parts and hardware in the package are accounted for.
- 2. All screws are tightened down to their specified values.
- 3. Neck is properly mounted and secured to the base frame.
- 4. Left and right handrails are properly mounted and secured to the based frame.
- 5. Display frame is properly mounted and secured to the neck and handrails.
- 6. Electronic display console is properly mounted and secured to the display frame.
- 7. All cables and harnesses are properly plugged to their respective connectors.
- 8. All cables inside the motor compartment are routed away from all moving parts.
- 9. Motor shroud and side bed covers are properly installed and secured.
- 10. Unit is leveled to the floor.
- 11. Using a chest strap or wireless heart rate simulator, verify heart rate is recording properly.
- 12. Once powered up, all features of the unit function properly.

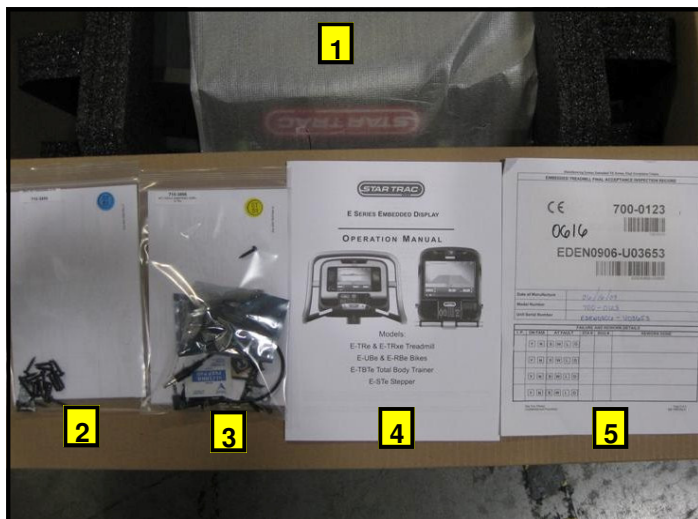


ATTENTION

- Star Trac recommends that the treadmill be spaced a minimum of 20.0 inches (0.5 m) apart to allow safe and easy ingress and egress. Even more importantly, there must be at least 48 inches (1.25 m) of free space behind the treadmill.
- As with any motorized equipment, the area where treadmills are located must be free of obstructions and fixtures with sharp edges to prevent injury in the event that a user trips or loses balance and falls.

THIS PAGE INTENTIONALLY LEFT BLANK

EMBEDDED DISPLAY CONSOLE INSTALLATION INSTRUCTIONS



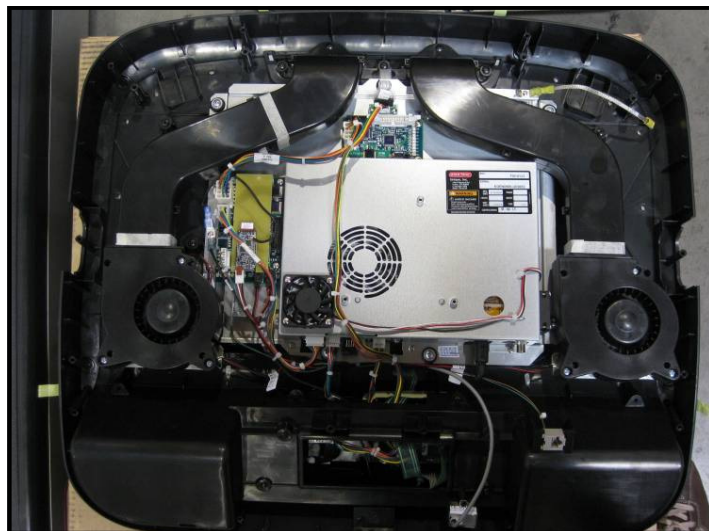
Step 1.

Remove all contents from the packaging and verify that you have the following parts:

1. Embedded display console.
2. E-TRe tool kit
3. E-TRxe tool kit
4. Owner's manual
5. Warranty registration card

Step 2.

Take out the embedded display console out of the box and remove all packing material. Verify no visual damage is present on the assembly.



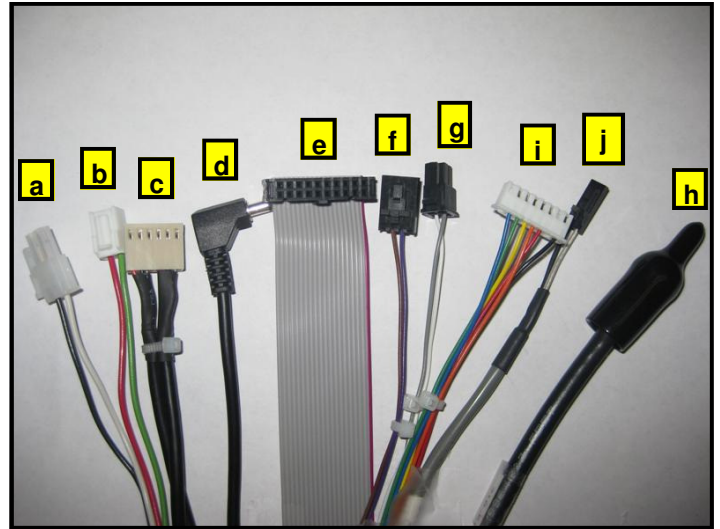
Step 3.

Peel off yellow tape that holds the back covers to the embedded display assembly, then remove the back covers to expose the display assembly. Save the covers for later use.



Step 8.

Position the display assembly near the top rail while a helper makes the necessary connections.

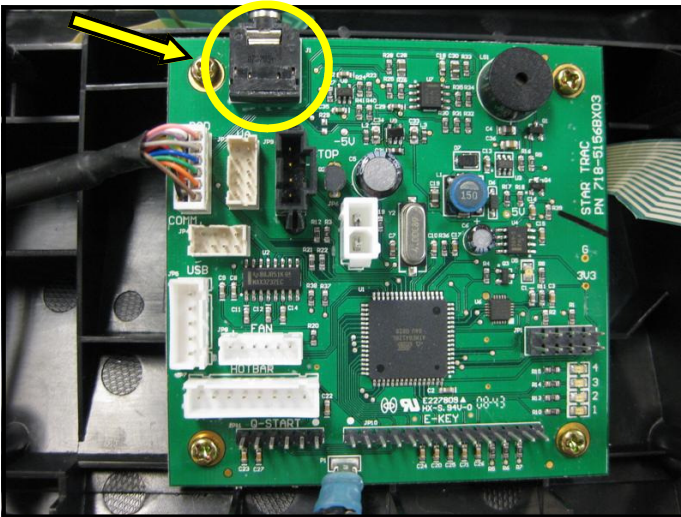


Step 9.

Identify the cables coming from neck and rails:

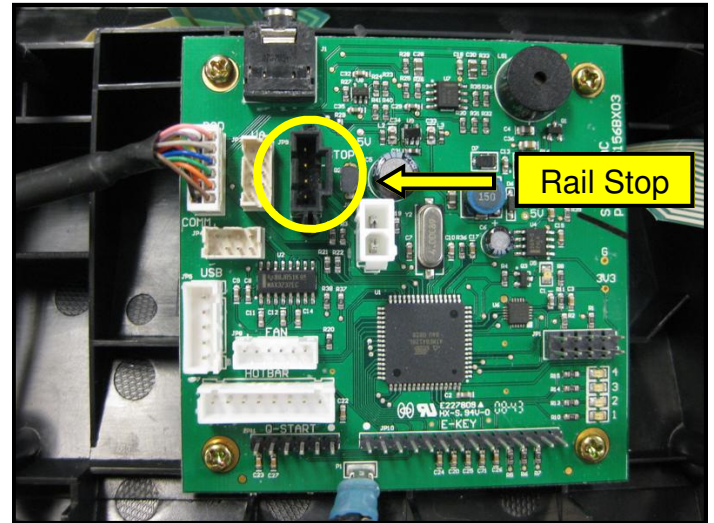
a. DC power cable	f. Rail stop cable
b. Fan power cable	g. E-Stop cable
c. Contact heart rate cable	h. Coax cable
d. Headphone jack cable	i. hot Bar keypad cable
e. Main I/O cable	j. User-Detect (E-TRxe only)

Note: The fan power cable (b) is not needed on the embedded display; it can be tucked down the neck for possible future use.



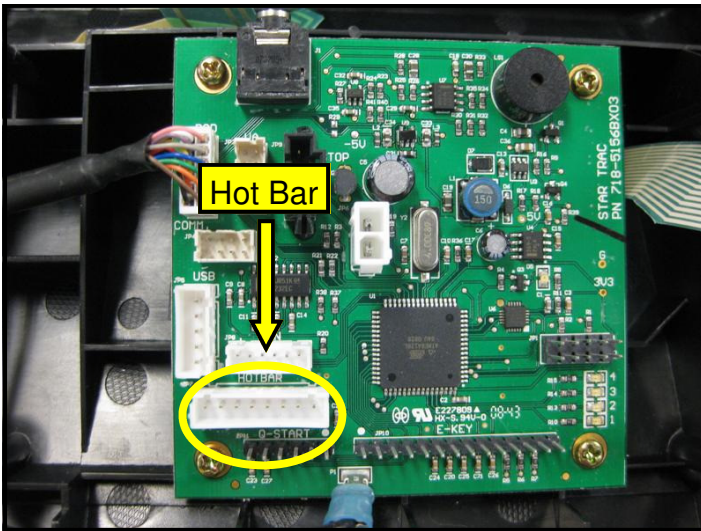
Step 10.

Connect headphone cable (d) coming from Hot Bar rail to audio jack on the center console board.

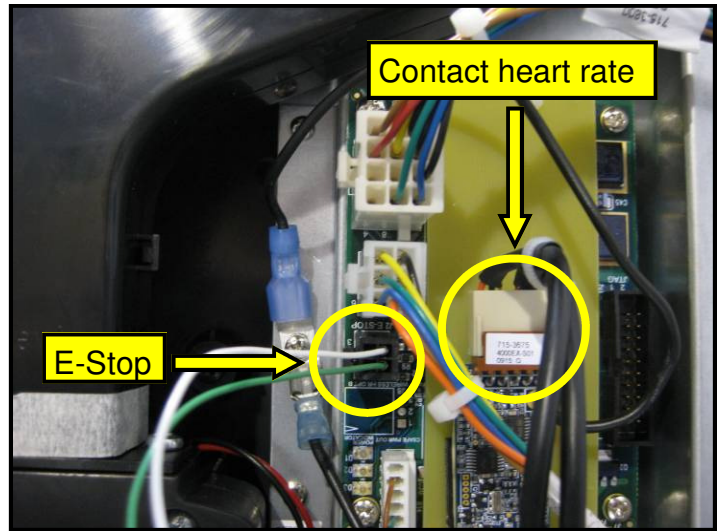


Step 11.

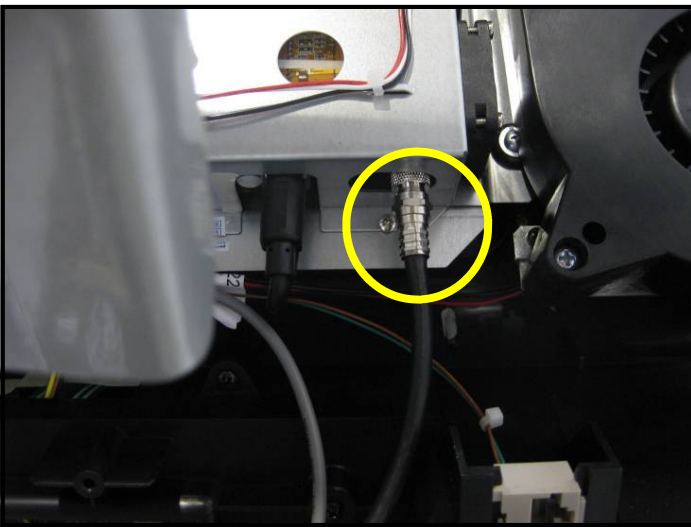
Connect the rail stop cable (f) to JP9 connector on the center console board.



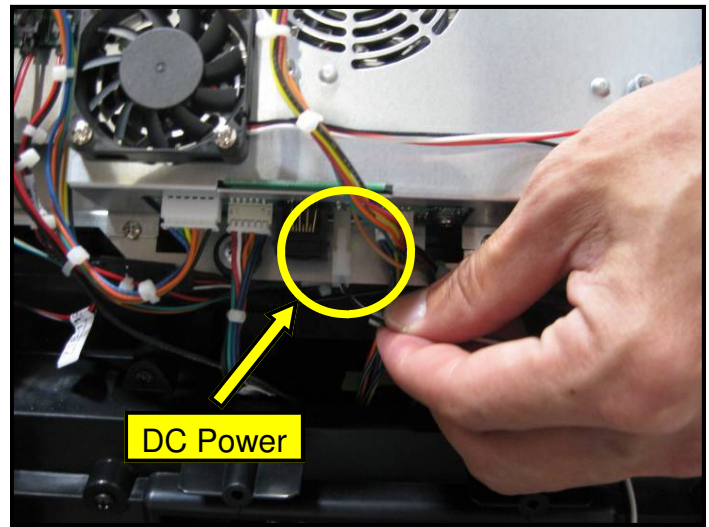
Step 12.
Connect the Hot Bar cable (i) to JP7 connector on the center console board.



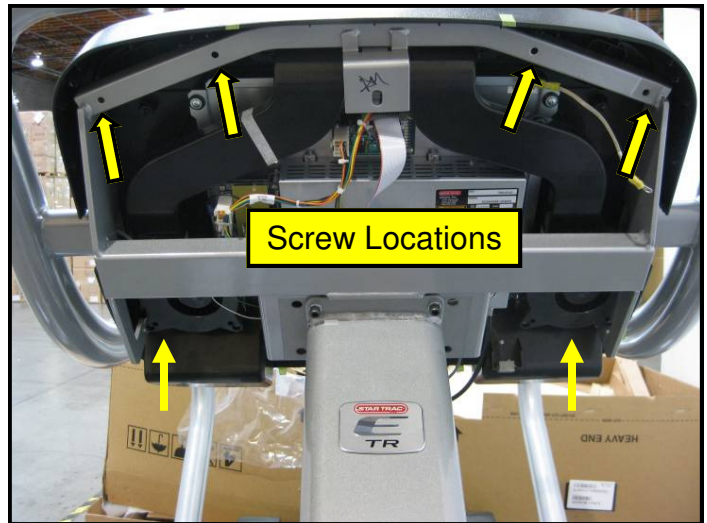
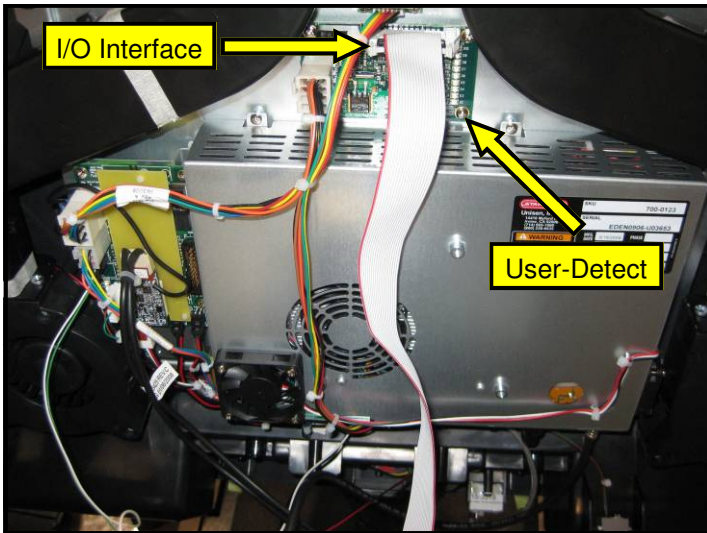
Step 13.
Connect the E-Stop cable (g) and the Contact Heart Rate cable (c) to respective connectors on the FitCpu board located on the back of embedded display.



Step 14.
plug and secure the coax cable (h) into the coax adapter on the tuner card of the embedded display assembly.



Step 15.
Now plug the DC power cable (a) from the base neck into DC connectors on the embedded display assembly.



Step 16.

Connect the I/O interface cable (e) to J1 connector on the translator board located on the top of the embedded display.

If Equipped, connect the user-detect cable from the neck to J5 connector on the translator board.

Step 17.

Mount the assembly to the frame and note the screw locations (see picture above). Secure top assembly with (4) M4 screws and (4) flat 5/16 washers.



Step 18.

Attach ground strap of the display assembly to the frame with a screw and washer.



Step 19.

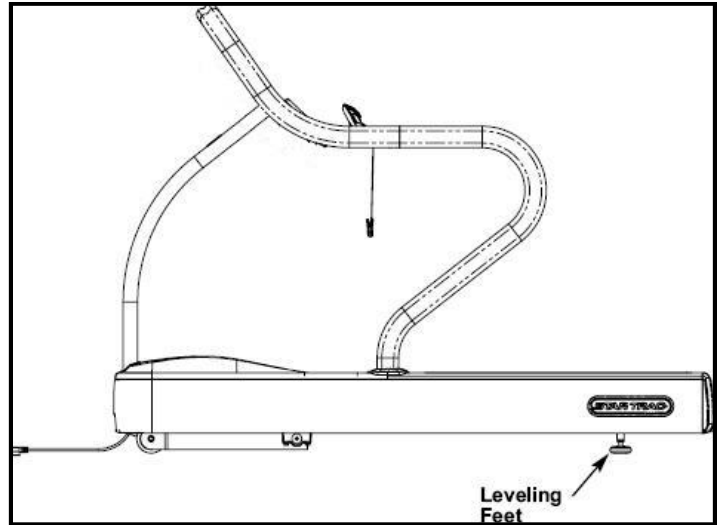
Secure the lower left and lower right of the assembly with (1) M4 screw and (1) flat 5/16 washer on each side.



Step 20.

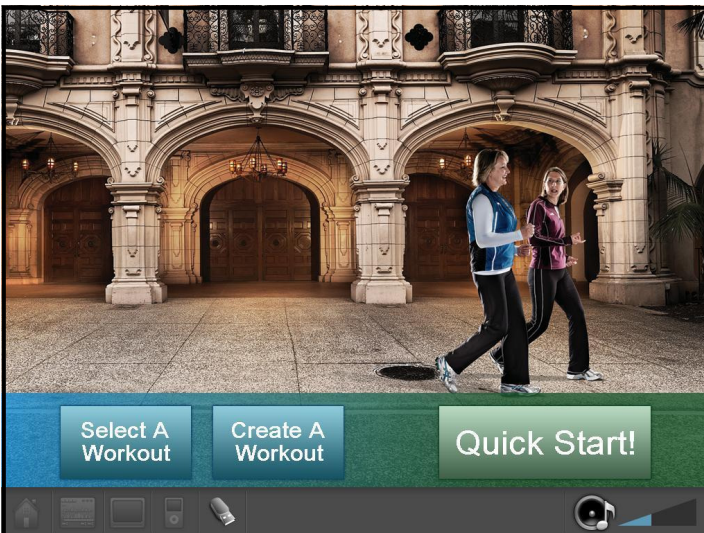
Install the lower display back cover onto display using (6) M4 screws. Next install upper display back cover onto display with (8) of the same screws, tighten all screws.

Caution: Do not use power tools or over torque the screws.



Step 21.

If not done already, position the treadmill where you plan to use it. If necessary, level the treadmill using the two adjustable feet under the tail roller. Loosen the lock nuts, rotate the feet until the treadmill is stabilized, and retighten the lock nuts.



Step 22.

Turn power on. Perform a visual inspection, and test the features and functions of the unit prior to use.

Note: Refer to the User's Manual for calibration instructions and other settings.

YOU HAVE NOW COMPLETED THE EMBEDDED DISPLAY INSTALLATION

Use the checklist below to ensure the proper installation of the Treadmill:

- 1. All parts and hardware in the package are accounted for.
- 2. Embedded display assembly is clear of any scratches or damage.
- 3. All screws are tightened down to their specified values.
- 4. Display frame is properly mounted and secured to the neck and handrails.
- 5. Embedded display assembly is properly mounted and secured to the display frame.
- 6. The front and back display plastics are properly installed and secured.
- 7. Cable feed and power adaptor are plugged into the front base of the unit.
- 8. Unit is leveled to the floor.
- 9. Touch screen responds to commands as specified in the User's Manual section regarding the Calibration and Setup.
- 10. Verify iPod menu is functioning and user can browse and listen to music and videos.
- 11. TV is setup properly per the owner's manual, signal is clear and audio is coming from both earphones.
- 12. Using a chest strap or wireless heart rate simulator, verify heart rate is recording properly.



ATTENTION

- Star Trac recommends that the treadmill be spaced a minimum of 20.0 inches (0.5 m) apart to allow safe and easy ingress and egress. Even more importantly, there must be at least 48 inches (1.25 m) of free space behind the treadmill.
- As with any motorized equipment, the area where treadmills are located must be free of obstructions and fixtures with sharp edges to prevent injury in the event that a user trips or loses balance and falls.

For technical assistance call Star Trac Customer Service: 1 800 503 1221

THIS PAGE INTENTIONALLY LEFT BLANK

iPod® CENTER CONSOLE INSTALLATION INSTRUCTIONS

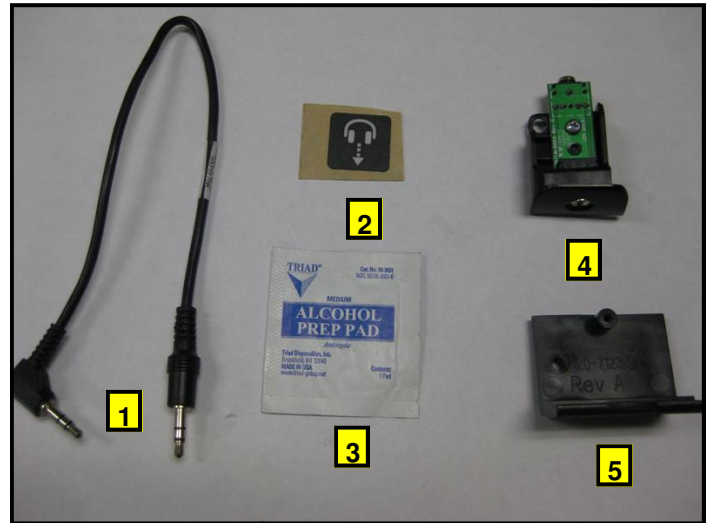


Step 1.

Remove all contents from the packaging and verify that you have the following parts:

1. (1) iPod® center console assembly.
2. (1) Owner's Manual.
3. (1) Hardware kit.

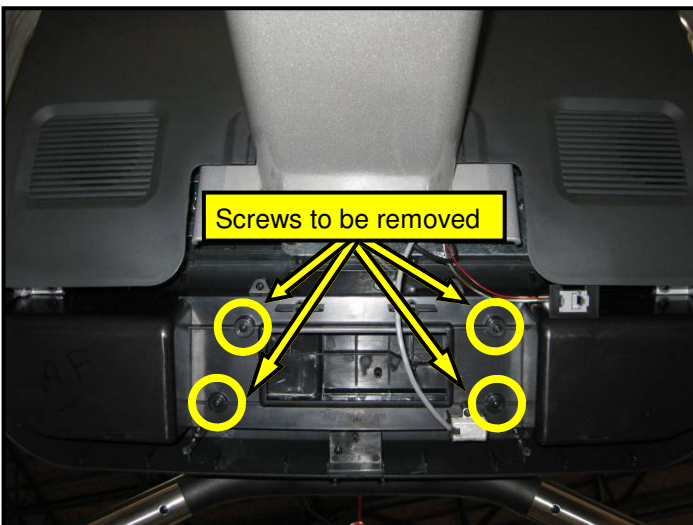
Note: If the center console is being installed on a new unit, then perform this installation prior to mounting the display assembly onto the frame.



Step 2.

Remove all contents from the hardware kit and verify that you have the following parts:

1. (1) Male-to-male headphone cable.
2. (1) Headphone icon sticker.
3. (1) Alcohol wipe.
4. E-TRx headphone jack assembly.
5. E-TR headphone jack mount



Step 3.

If the display console is already installed on the frame and the back enclosures are off, remove the screws to release the standard console and remove wires or harnesses attached to the display.



Step 4.

Remove the standard center console from the display.

Note: You will no longer need the center console, and if desired, you can store it away for any possible future use.



Step 5.

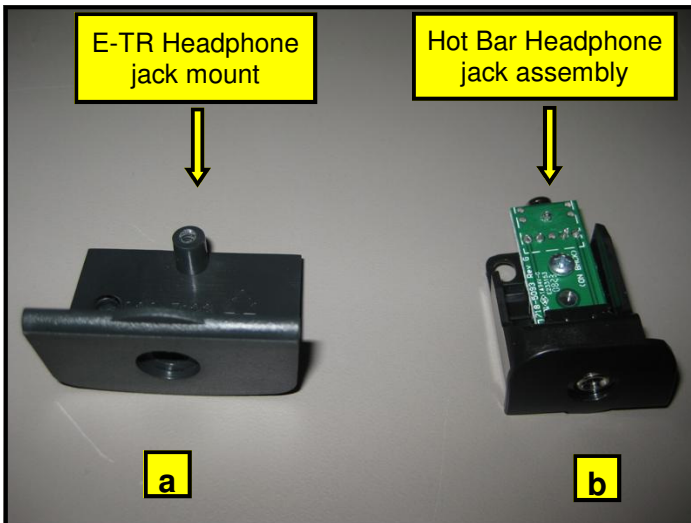
Using a Phillips head screw driver, remove the screw that holds in the headphone jack cap at the lower front of the hot bar. **Retain the screw.**



Step 6.

Remove the headphone jack blank cover.

Note: You will no longer need the cover and it can be stored away for any possible future use.



Step 7.

Identify the two headphone board mounts that came with the kit:

- a. E-TR headphone jack mount.
- b. E-TRx Hot Bar headphone jack assembly.

Note: You will not need the E-TR headphone jack, if desired, you can store it for any possible future use.

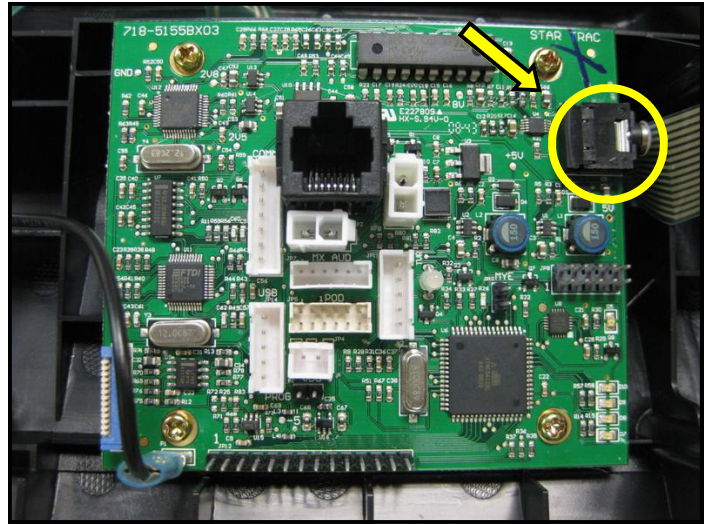


Step 8.

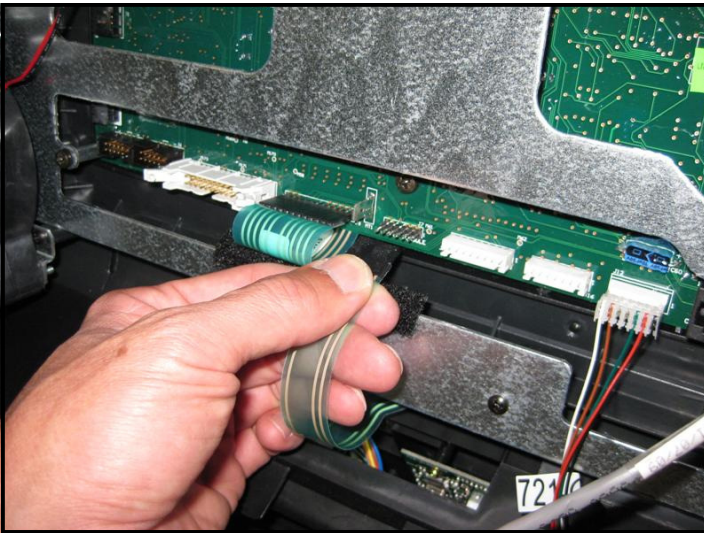
Select the E-TRx headphone mount from the kit and attach it to the available cut-out at the lower front of the hot bar, then secure with previously retained screw.



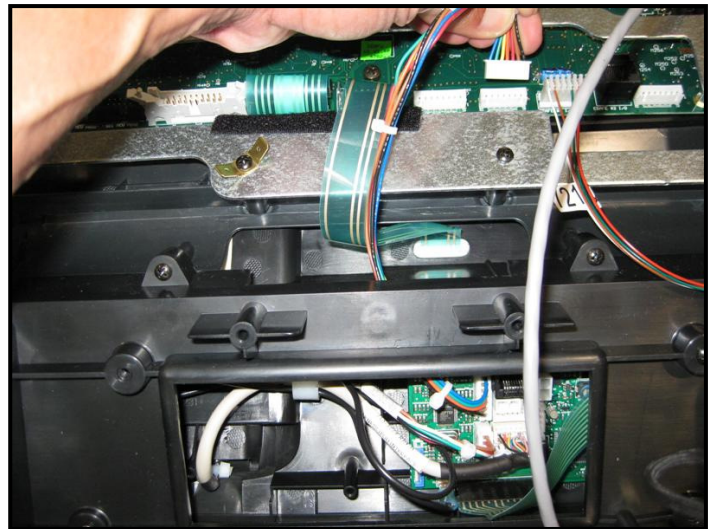
Step 9.
Install the new iPod® center console.



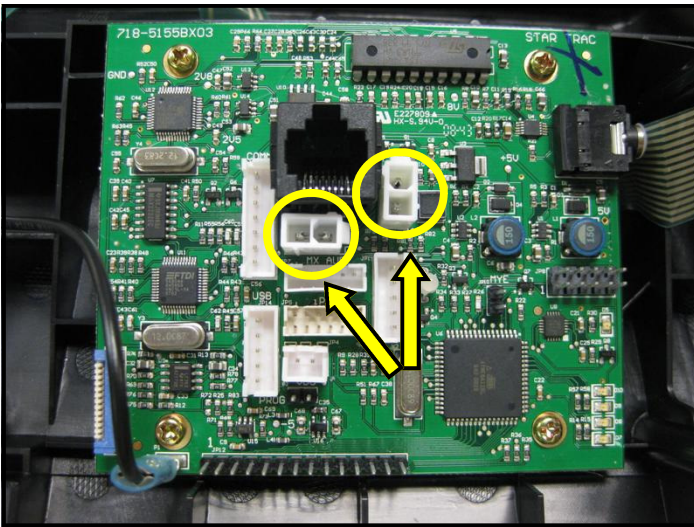
Step 10.
Connect headphone cable coming from Hot Bar rail to the headphone jack on the center console board.



Step 11.
Plug the center console keypad cable into J7 connector on the display board.

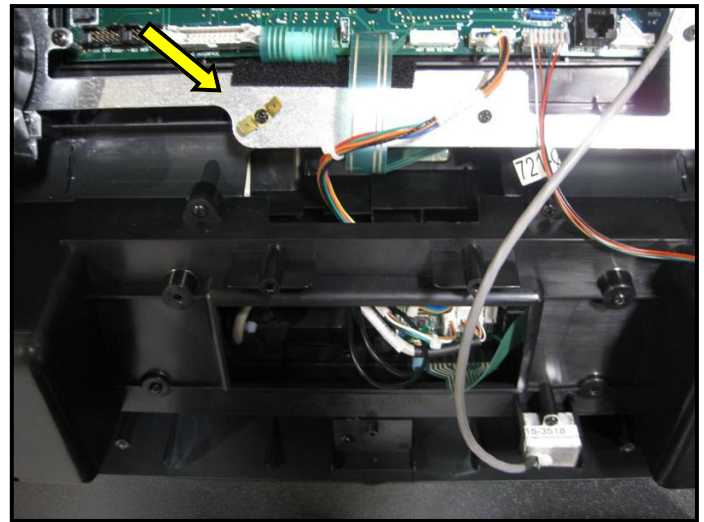


Step 12.
Plug the center console's 7-pin interface cable into J11 connector on the display board.



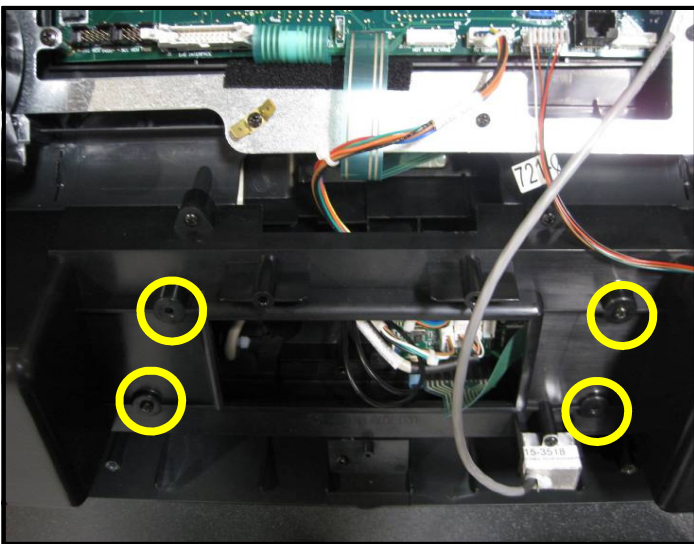
Step 13

Plug the DC power cable from the treadmill neck into either one of the DC connectors on the center console board.



Step 14.

Plug the center console's ground cable into the ground cable tab on the back display bracket.



Step 15.

Secure the iPod® center console in place using the screws you saved earlier.



Step 16.

Install and secure lower back cover then turn power on. Perform a visual inspection, and test the features and functions of the unit prior to use.

Note: Refer to the User's Manual for calibration instructions and other settings.

YOU HAVE NOW COMPLETED THE iPod® CENTER CONSOLE INSTALLATION

Use the checklist below to ensure the proper installation of the Treadmill:

- 1. All parts, tools and hardware in the package are accounted for.
- 2. Center console assembly is properly mounted and secured.
- 3. All screws are tightened down to their specified values.
- 4. The front and back display plastics are properly installed and secured.
- 5. All cables and harnesses are properly plugged to their respective connectors.
- 6. Verify iPod control on center console is functioning and user can browse and listen to music
- 7. Headphone jack the Hot Bar produces clear audio on both sides of earphone.



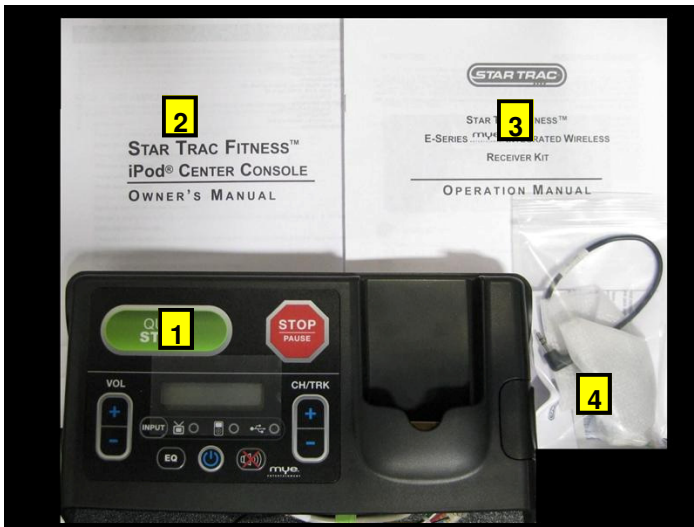
ATTENTION

- Star Trac recommends that the treadmill be spaced a minimum of 20.0 inches (0.5 m) apart to allow safe and easy ingress and egress. Even more importantly, there must be at least 48 inches (1.25 m) of free space behind the treadmill.
- As with any motorized equipment, the area where treadmills are located must be free of obstructions and fixtures with sharp edges to prevent injury in the event that a user trips or loses balance and falls.

For technical assistance call Star Trac Customer Service: 1 800 503 1221

THIS PAGE INTENTIONALLY LEFT BLANK

MYE® ENTERTAINMENT CENTER CONSOLE INSTALLATION INSTRUCTIONS

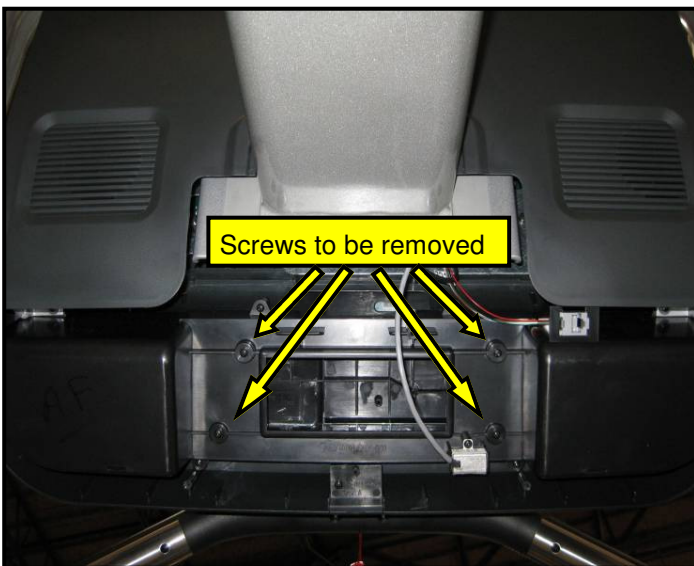


Step 1.

Remove all contents from the packaging and verify that you have the following parts:

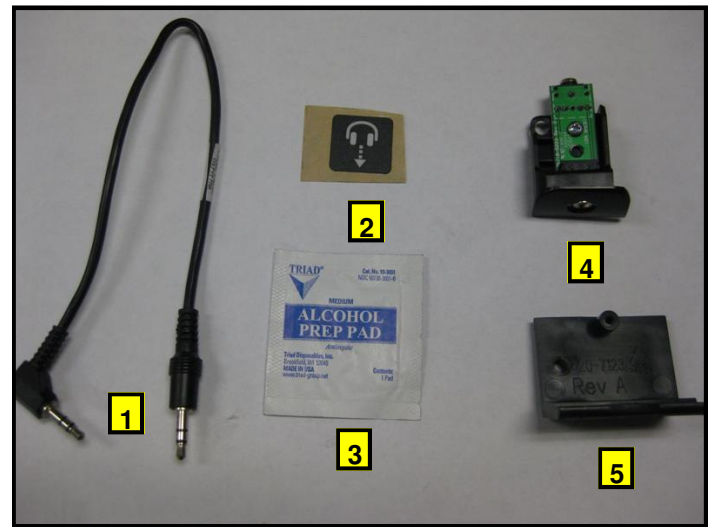
1. (1) MYE® center console assembly.
2. (1) iPod Owner's Manual.
3. (1) MYE Operation Manual.
4. (1) Hardware kit.

Note: If the center console is being installed on a new unit, then perform this installation prior to mounting the display assembly onto the frame.



Step 3.

If the display console is already installed on the frame and the back enclosures are off, remove the screws to release the standard console and remove wires or harnesses attached to the display.



Step 2.

Remove all contents from the hardware kit and verify that you have the following parts:

1. (1) Male-to-male headphone cable.
2. (1) Headphone icon sticker.
3. (1) Alcohol wipe.
4. E-TRx headphone jack assembly.
5. E-TR headphone jack mount



Step 4.

Remove the standard center console from the display.

Note: You will no longer need the center console, and if desired, you can store it away for any possible future use.

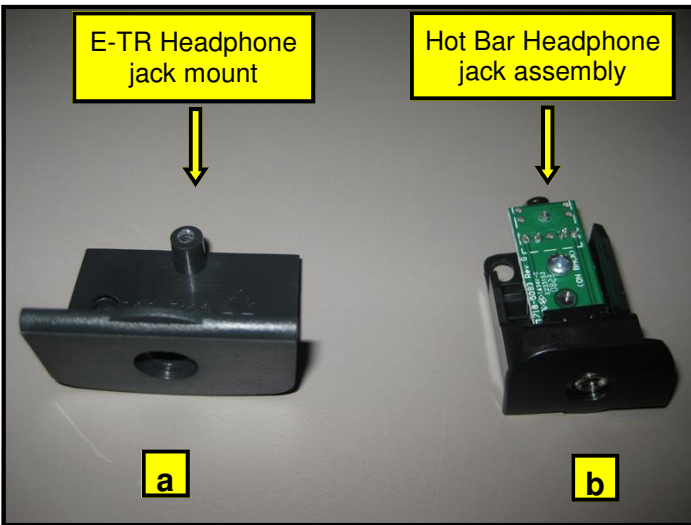


Step 5.
Using a Phillips head screw driver, remove the screw that holds in the headphone jack cap at the lower front of the hot bar. **Retain the screw.**



Step 6.
Remove the headphone jack blank cover.

Note: You will no longer need the cover, and if desired, you can store it away for any possible future use.



Step 7.
Identify the two headphone board mounts that came with the kit:
a. E-TR headphone jack mount.
b. E-TRx Hot Bar headphone jack assembly.

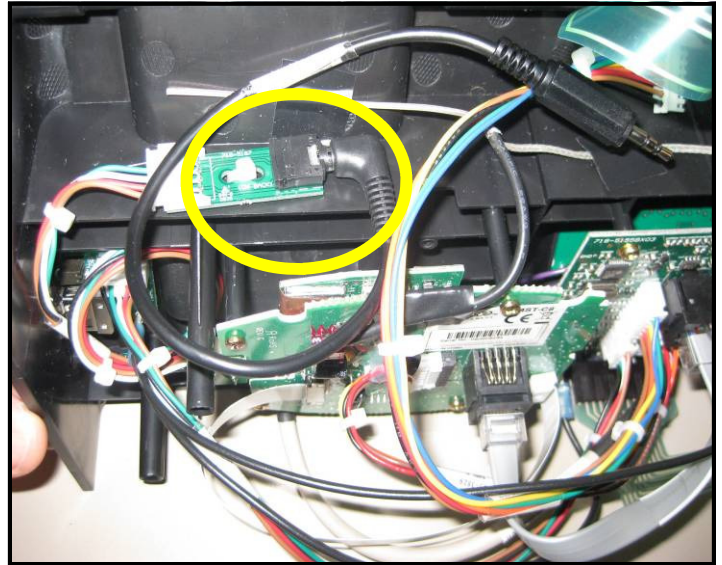
Note: You will not need the E-TR headphone jack, if desired, you can store it for any possible future use.



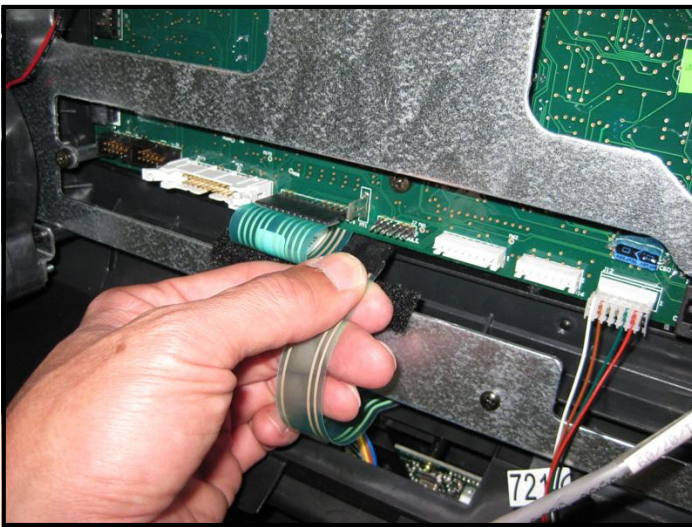
Step 8.
Select the E-TRx headphone mount from the kit and attach it to the available cut-out at the lower front of the hot bar, then secure with previously retained screw.



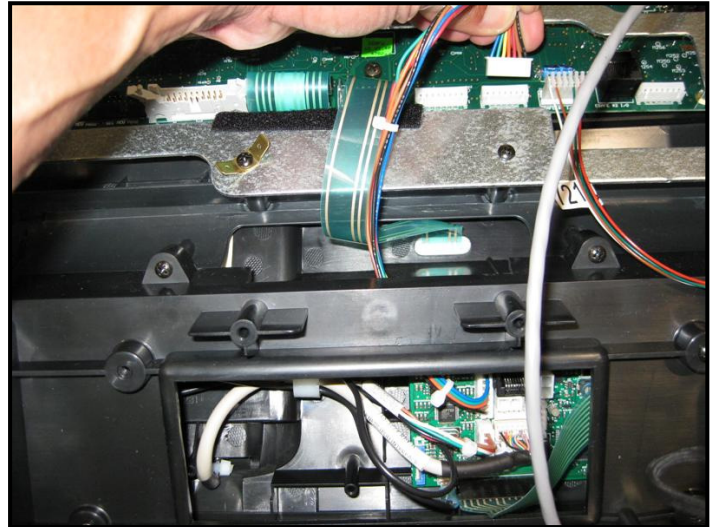
Step 9.
Install the new MYE® entertainment console in place. **Don't** secure console with screws yet.



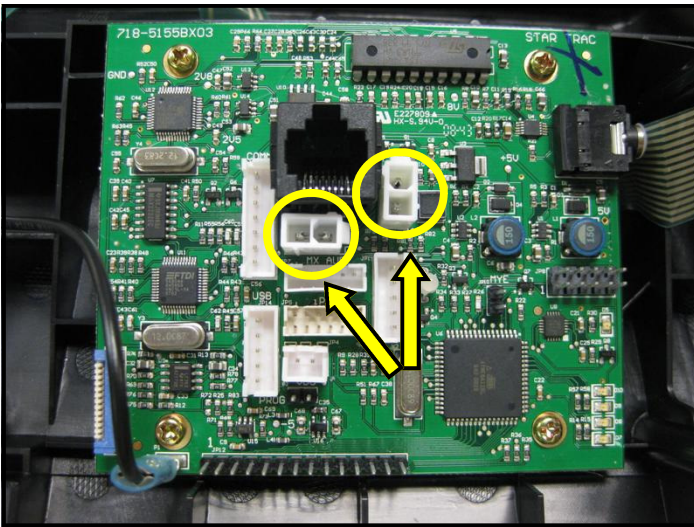
Step 10.
Connect the headphone cable coming from Hot Bar rail to the headphone connector on the MYE® center console.



Step 11.
Plug the center console's keypad cable into J7 connector on the display board.

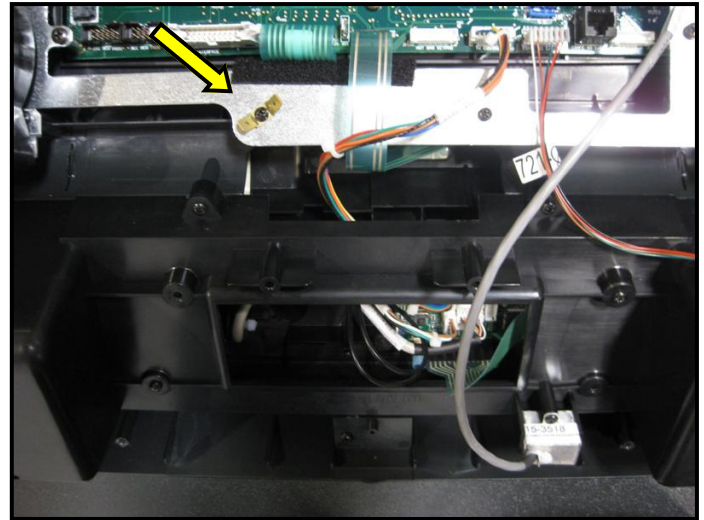


Step 12.
Plug the center console's 7-pin interface cable into J11 connector on the display board.



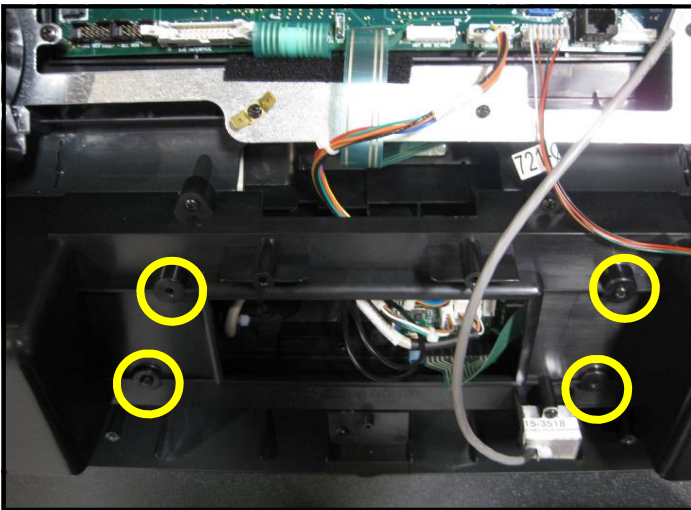
Step 13.

Plug the DC power cable from the treadmill neck into either one of the DC connectors on the center console board.



Step 14.

Plug the center console's ground cable into the ground cable tab on the back display bracket.



Step 15.

Secure the MYE® center console in place using previously retained screws, then replace and secure the display's back covers.



Step 16.

Turn power on. Perform a visual inspection, and test the features and functions of the unit prior to use.

Note: Refer to the User's Manual for calibration instructions and other settings.

YOU HAVE NOW COMPLETED THE MYE® CENTER CONSOLE INSTALLATION

Use the checklist below to ensure the proper installation of the Treadmill:

- 1. All parts, tools and hardware in the package are accounted for.
- 2. Center console assembly is properly mounted and secured.
- 3. All screws are tightened down to their specified values.
- 4. The front and back display plastics are properly installed and secured.
- 5. All cables and harnesses are properly plugged to their respective connectors.
- 6. Verify iPod control on center console is functioning and user can browse and listen to music.
- 7. All features of the MYE® center console work as specified in the User's Manual.
- 8. Headphone jack at the front of display produces clear audio on both sides of earphone.



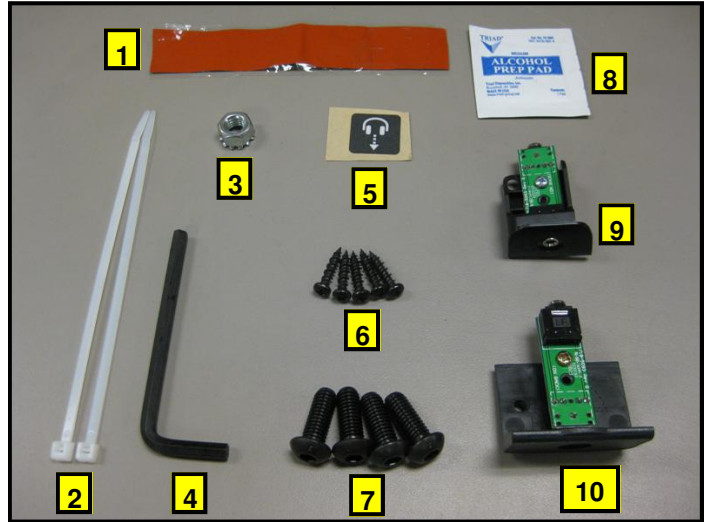
ATTENTION

- Star Trac recommends that the treadmill be spaced a minimum of 20.0 inches (0.5 m) apart to allow safe and easy ingress and egress. Even more importantly, there must be at least 48 inches (1.25 m) of free space behind the treadmill.
- As with any motorized equipment, the area where treadmills are located must be free of obstructions and fixtures with sharp edges to prevent injury in the event that a user trips or loses balance and falls.

For technical assistance call Star Trac Customer Service: 1 800 503 1221

THIS PAGE INTENTIONALLY LEFT BLANK

PERSONAL VIEWING SCREEN (PVS) INSTALLATION INSTRUCTIONS



Step 1.

Remove all contents from the packaging and verify that you have the following parts:

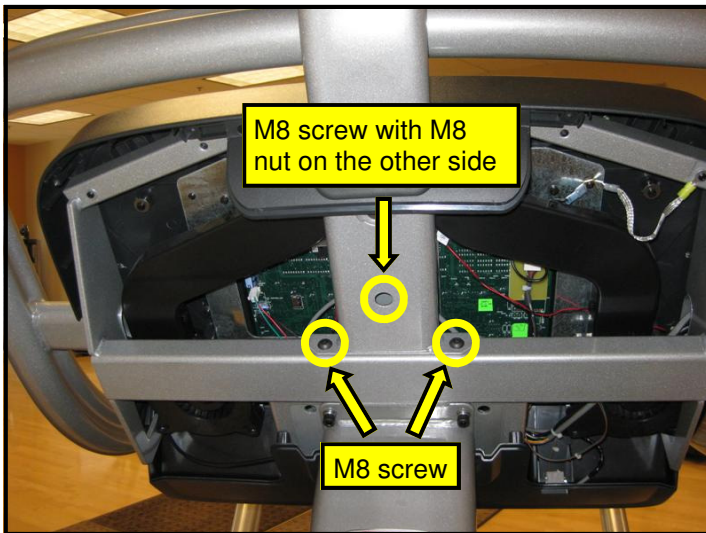
1. 1 PVS assembly with mounting
2. 1 PVS center console assembly.
3. 1 hardware kit
4. 1 Owner's Manual

Note: If the center console is being installed on a new unit, then perform this installation prior to mounting the display assembly onto the frame.

Step 2.

Verify following items included in hardware kit:

1. (1) Silicon wrap
2. (2) Tie strap
3. (1) M8 nut
4. (1) 5MM Hex (Allen) key.
5. (1) Headphone jack label.
6. (5) Screw M4x.7, 19mm, Pan Head
7. (4) M8 x 20mm Button head screws.
8. (1) Alcohol wipe.
9. (1) E-TRx Hot Bar headphone jack assembly.
10. (1) E-TR headphone jack assembly.



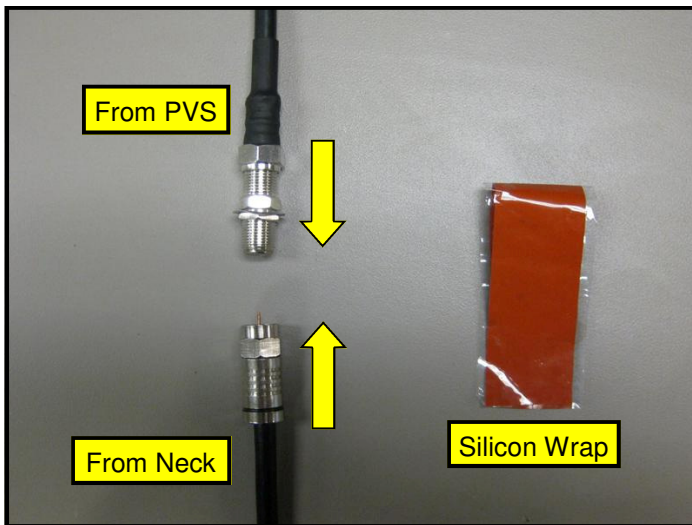
Step 3.

Mount the PVS bracket on the treadmill. Using the 5mm hex key, screw in the (2) M8 Button-head screws at the base of the PVS first (do not tighten yet). Install (1) M8 Button-head screw into the hole on the PVS neck, then install (1) M8 hex nut on the back side (do not tighten).



Step 4.

Tighten the hex nut on the back of the neck.



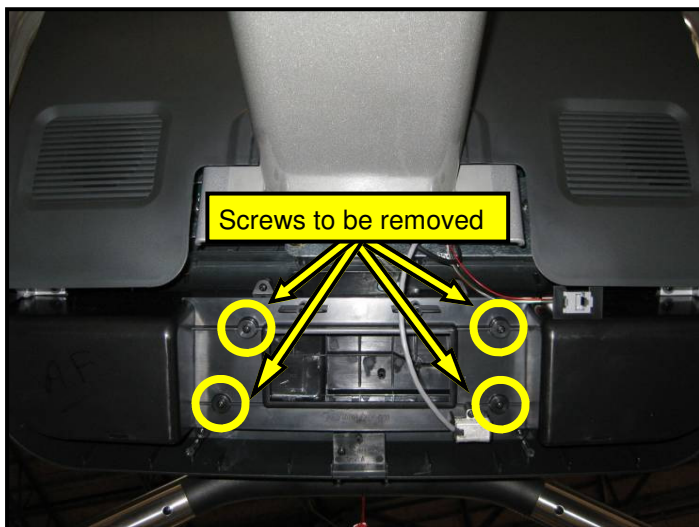
Step 5.

Connect the coax cable coming the treadmill neck to the coax cable coming from the PVS neck, secure tightly. Now take the 5" silicon wrap from the kit and peel off its protective tape then wrap the two connectors so that all of the metal surface is covered.



Step 6.

Plug-in the coax cable coming from your cable service provider onto the coax connector located at the base of the treadmill's frame.



Step 7.

Remove the screws to release the standard console and remove wires or harnesses attached to the display. Save screws for later use.



Step 8.

Remove the standard center console from the display.

Note: You will no longer need the center console, and if desired, you can store it away for any possible future use.



Step 9.
Install the new PVS center console in place.
Don't secure console with screws yet.

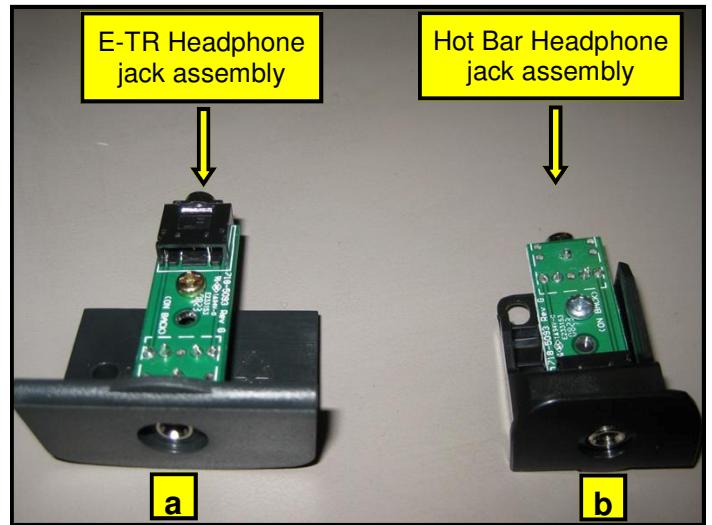


Step 10.
Using a Phillips head screw driver, remove the screw that holds in the headphone jack cap at the lower front of the hot bar. **Retain the screw.**



Step 11.
Remove the headphone jack blank cover.

Note: You will no longer need the cover, and if desired, it can be stored away for any possible future use.

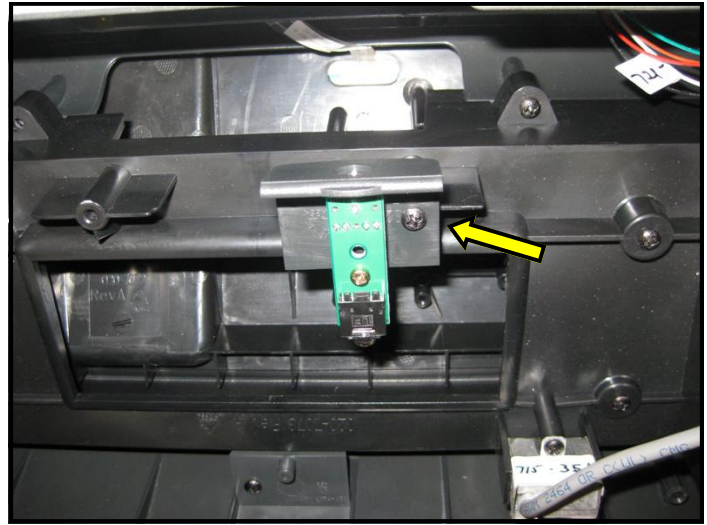


Step 12.
Identify the two headphone board mounts that came with the kit:
a. E-TR headphone jack assembly.
b. E-TRx Hot Bar headphone jack assembly.



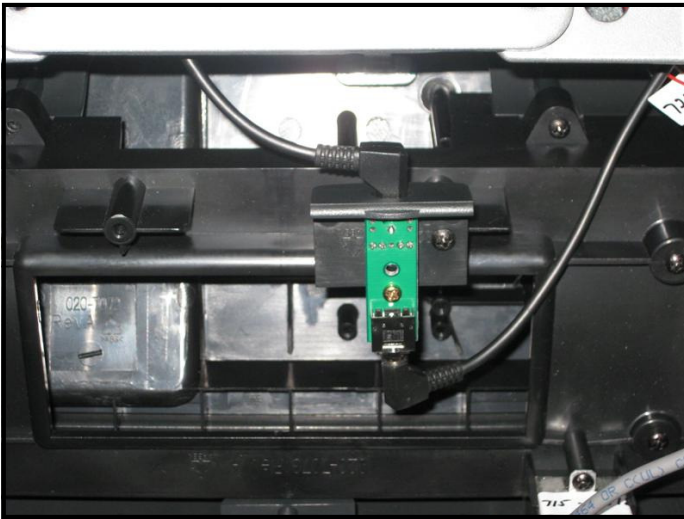
Step 13.

Select the E-TRx headphone mount from the kit and attach it to the available cut-out at the lower front of the hot bar, then secure with previously retained screw.



Step 14.

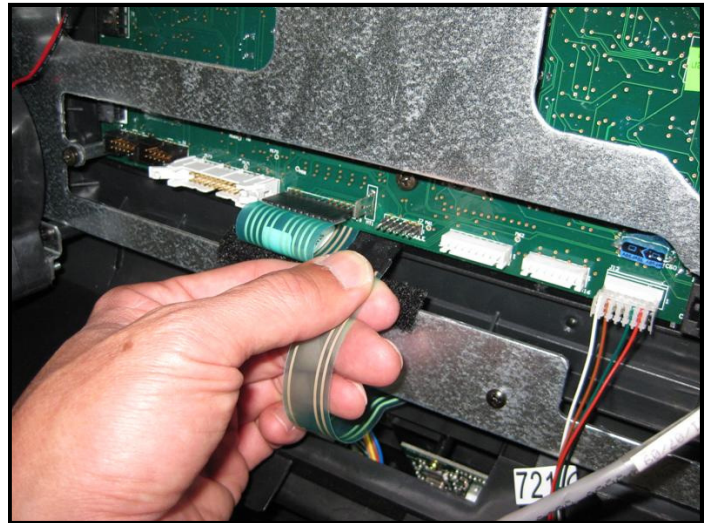
Take the E-TR headphone jack assembly from the kit and install it onto the back of the center console mount, then secure with (1) M4 screw.



Step 15.

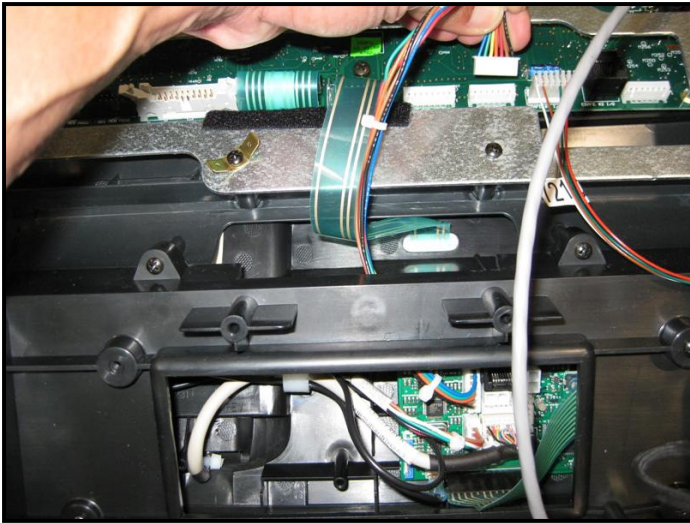
Take the headphone jack cable from the PVS neck and connect it to one end of the headphone jack, then take the headphone jack cable from the Hot bar and connect it to the other end of the headphone jack.

Note: The headphone jacks on the audio board are interchangeable.

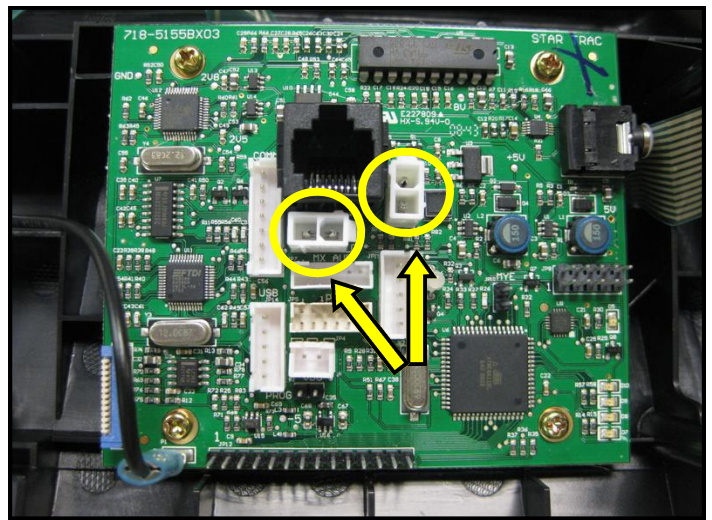


Step 16.

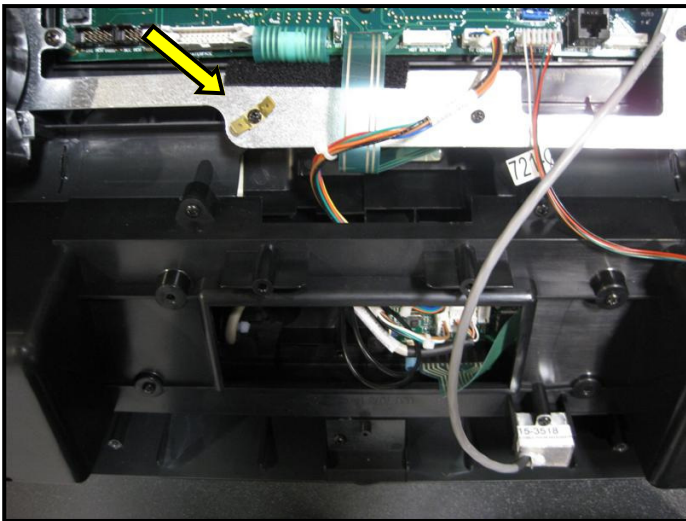
Plug the center console's keypad cable into J7 connector on the display board.



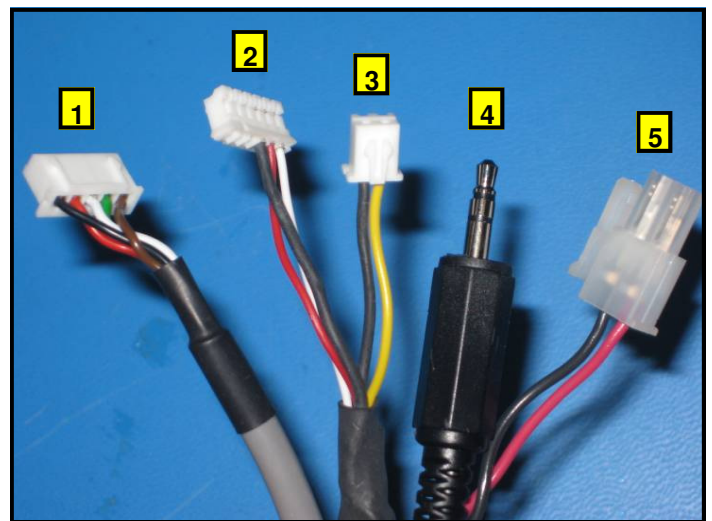
Step 17.
 Plug the center console's 7-pin interface cable into J11 connector on the display board.



Step 18.
 Plug the DC power cable from the treadmill neck into either one of the DC connectors on the center console board.

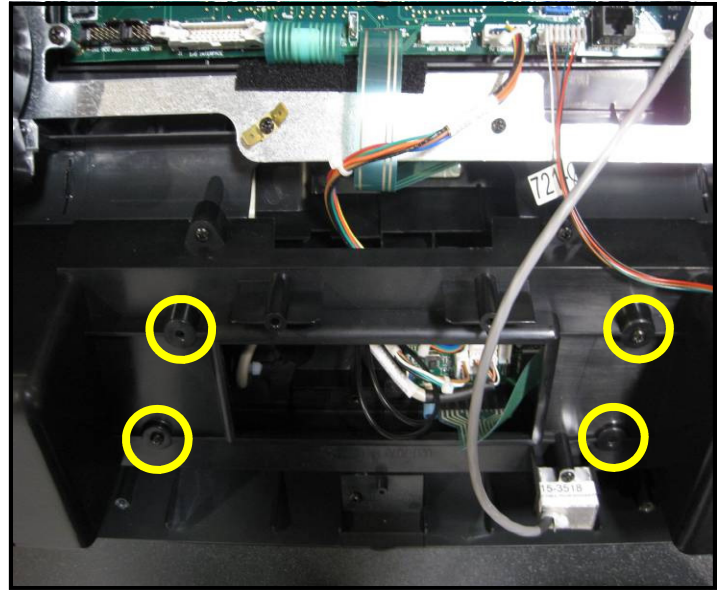
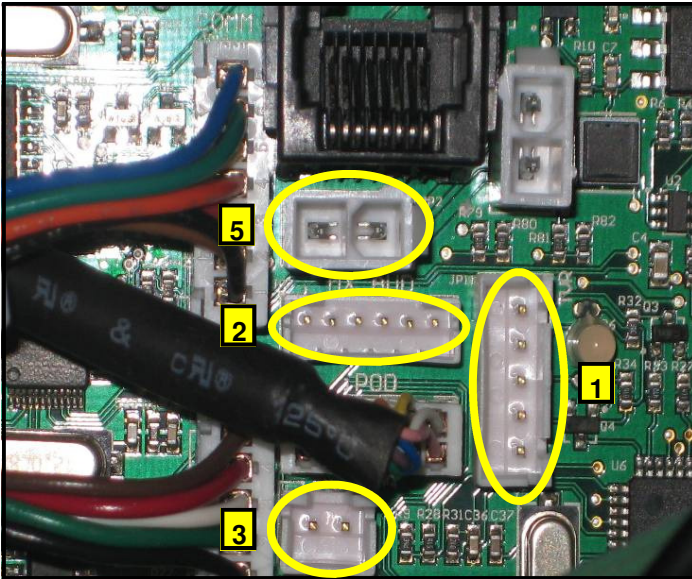


Step 19.
 Plug the center console's ground cable into the ground cable tab on the back display bracket.



Step 20.
 Identify and verify these connectors coming from the PVS neck (left to right):

1. TV control.
2. Audio.
3. Video.
4. Headphone (*connected to headphone jack in Step 15*).
5. DC power jack.



Step 21.

Plug identified PVS connectors into the highlighted locations on the center console board.

Note: The DC power connectors on the center console board are interchangeable.

Step 22.

Secure the PVS center console in place using the screws you saved earlier.



Step 23.

Install the lower display back cover onto display using (6) M4 screws. Next install upper display back cover with (8) M4 screws, tighten all screws.

Caution: Do not use power tools or over torque the screws.



Step 24.

Turn power on. Perform a visual inspection, and test the features and functions of the unit prior to use.

Note: Refer to the User's Manual for calibration instructions and other settings.

YOU HAVE NOW COMPLETED THE PERSONAL VIEWING SCREEN INSTALLATION

Use the checklist below to ensure the proper installation of the Treadmill:

- 1. All parts and hardware in the package are accounted for.
- 2. Personal Viewing Screen assembly is properly mounted and secured.
- 3. Center console assembly is properly mounted and secured.
- 4. All screws are tightened down to their specified values.
- 5. Display's mounting bracket and back cover are properly mounted and secured.
- 6. All cables and harnesses are properly plugged to their respective connectors.
- 7. The front and back display plastics are properly installed and secured.
- 8. Cable feed and power adaptor are plugged into the front base of the unit.
- 9. Verify iPod menu is functioning and user can browse and listen to music and videos.
- 10. TV is setup properly per the owner's manual, signal is clear and audio is coming from both earphones.



ATTENTION

- Star Trac recommends that treadmills be spaced a minimum of 20.0 inches (0.5 m) apart to allow safe and easy ingress and egress. Even more importantly, there must be at least 48 inches (1.25 m) of free space behind the treadmills
- As with any motorized equipment, the area where treadmills are located must be free of obstructions and fixtures with sharp edges to prevent injury in the event that a user trips or loses balance and falls

For technical assistance call Star Trac Customer Service: 1 800 503 1221



expect different™.

STAR TRAC
14410 Myford Road
Irvine, California 92606
Telephone: (800) 228-6635, (714) 669-1660
Fax: (714) 508-3303
<http://www.startrac.com>

STAR TRAC FITNESS™

E-TR Treadmill

OWNER'S MANUAL






expect different.

After having used your **STAR TRAC E SERIES TREADMILL** for many workouts, you may wish to change some of its settings.

MANAGER MODE


The Manager Mode allows you to query and modify the basic settings of your treadmill. To enter Manager Mode:

1. Press and *hold* the , , and  keys together.
2. A beep will sound and "MANAGER MODE" will display momentarily in the Information Window.
3. Release the keys. "MCI VX.XX CKSM XXXX" will display in the Information Window.

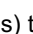
NOTE: The system will automatically exit Manager Mode if no key is pressed for 30 seconds.

The following keys are available in MANAGER MODE:



Incline Keys: Displays the next  and previous  parameter, respectively. Keys will repeat if held.



Speed Keys: Adjust the value of the displayed parameter up and down, respectively, in increments of 1 unit or 0.01 unit, as appropriate for the parameter. These keys *do not* save the new value - see  **Key** below.



OK Key: Updates (saves) the value of the displayed parameter in Flash memory. Alternatively, the START key may be used (see above).



Number/Program Select Keys: Enter new data item values for numeric parameters.



Stop Key: Exits Manager Mode and restarts the treadmill greeting.

The items that you may display and change with the previous keys are:




Item	Lowest Value	Default Value	Highest Value	Meaning
MC1 V X.XX	N/A	N/A	N/A	Display's primary processor software version and checksum.
MC2 V X.XX	N/A	N/A	N/A	Display's secondary processor software version and checksum.
SERIAL NO	0	0	65,535	Treadmill serial number.
UNITS	-	English	-	English = units of pounds, miles, hours, minutes, seconds, feet, inches; Metric = units of kilograms, kilometers, hours, minutes, seconds, centimeters.
TIME	5	99	99	Maximum time in minutes allowed for program, including warm-up.
WEIGHT	1	155/70	500/226	Default (to user), typical weight in lb (UNITS=English), or kg (UNITS=Metric).
LANGUAGE	-	English	-	Language in English, Dutch, French, German, Portuguese, Spanish, Swedish, Italian or Katakana.
METS	OFF	OFF	ON	ON=METS display enabled. OFF=METS display disabled.
PAUSE	30	45	120	Pause duration during a program, in seconds, either 30, 45, 60, 90 or 120.
AUTO FAN	OFF	ON	ON	Turns ON the fan 1 minute into the program.
ELEVATION	OFF	ON	ON	ON= Elevation function enabled. OFF= Elevation function disabled.

Item	Lowest Value	Default Value	Highest Value	Meaning
AUTO STOP	OFF	OFF	ON	ON= Auto stop feature enabled. OFF= Auto stop feature disabled.
CSAFE	OFF	OFF	ON	ON=CSAFE communication enabled. OFF=CSAFE communication disabled.
LOCK OUT	OFF	OFF	ON	ON= Treadmill lock out enabled. OFF= Treadmill lock out disabled.
LOCKOUT ID	10000	12345	65535	Treadmill lockout ID.
MINIMUM SPEED*	0.5/0.8	0.5/0.8	2.0/3.2	Minimum speed in mph (UNITS= English), or km/hr (UNITS= Metric).
MAXIMUM SPEED*	5.0/5.0	10.0/16.0	12.5/20.0	Maximum speed in mph (UNITS= English), or km/hr (UNITS= Metric). Caution: See Motor Calibration before making any changes.
ACCELERATION TIME	25	25	60	Time, in seconds, to reach maximum speed from 0 mph (0 km/hr).
DECELERATION TIME	20	20	60	Time, in seconds, to reach 0 mph (0 km/hr) from maximum speed.

*When the MINIMUM SPEED or MAXIMUM SPEED parameters are changed, the Treadmill will perform an auto calibration. To terminate the auto calibration and return the parameter to its default setting, press the STOP key.

MAINTENANCE MODE

Your Service Representative may need to check accumulated data about the past usage of your treadmill, test its motor and display controls, or investigate error messages. For these reasons, your treadmill is equipped with Maintenance Mode. Maintenance Mode includes all of the items available through Manager Mode, plus additional items for Service and Diagnostic use. To enter Maintenance Mode:


1. Press and *hold* the , , and  keys together.
2. A beep will sound and "MAINTENANCE MODE" will display momentarily in the Information Window.
3. Release the remaining keys. "MCI VX.XX CKSM XXXX" will display in the Information Window.

The following keys are available in MAINTENANCE MODE:




Incline Keys: Displays the next and previous parameter, respectively. Keys will repeat if held.



Speed Keys: Adjust the value of the displayed parameter up and down, respectively, in increments of 1 unit or 0.01 unit, as appropriate for the parameter. These keys *do not* save the new value - see **Start Key** and  **Key** below.



Enter Key: Updates (saves) the value of the displayed parameter in Flash memory. Alternatively, the  key may be used (see above).



Number/Program Select Keys: Enter new data item values for numeric parameters.



Stop Key: Exits Maintenance Settings Mode and restarts the treadmill greeting.

The items that you may display and change with the previous keys are:





Item	Lowest Value	Default Value	Highest Value	Meaning
MC1 V X.XX	N/A	N/A	N/A	Display's primary processor software version and checksum.
MC2 V X.XX	N/A	N/A	N/A	Display's secondary processor software version and checksum.
SERIAL NO	0	0	65,535	Treadmill serial number.
OPER HOURS	0	0	65,535	Total operating hours.
DISTANCE	0	0	65,535	Total treadmill miles (UNITS= English), or km (UNITS= Metric).
UNITS	-	English	-	English = units of pounds, miles, hours, minutes, seconds, feet, inches; Metric = units of kilograms, kilometers, hours, minutes, seconds, centimeters.
TIME	5	99	99	Maximum time in minutes allowed for program, including warm-up.
WEIGHT	0	155/70	500/226	Default (to user), typical weight in lb (UNITS= English), or kg (UNITS= Metric).
LANGUAGE	-	English	-	Language in English, Dutch, French, German, Portuguese, Spanish, Swedish, Italian or Katakana.
METS	-	OFF	-	ON= METS display enabled. OFF= METS display disabled.
PAUSE	30	45	120	Pause duration during a program, in seconds, either 30, 45, 60, 90 or 120.
AUTO FAN	-	OFF	-	Turns on the fan 1 minute into program.
ELEVATION	-	ON	-	ON= Elevation function enabled. OFF= Elevation function disabled.
AUTO STOP	-	OFF	-	ON= Auto stop feature enabled. OFF= Auto stop feature disabled.
CSAFE	-	OFF	-	ON= CSAFE communication enabled. OFF= CSAFE communication disabled.
PVS	-	ATSC	-	PVS type, ATSC/NTSC OR PAL/SECAM.
LOCK OUT	-	OFF	-	ON= Treadmill lock out enabled. OFF= Treadmill lock out disabled.
LOCKOUT ID	10000	12345	65535	Treadmill lockout ID.
MINIMUM SPEED	0.5/0.8	0.5/0.8	2.0/3.2	Minimum speed in mph (UNITS= English), or km/hr (UNITS= Metric).
MAXIMUM SPEED	5.0/5.0	10.0/16.0	12.5/20.0	Maximum speed in mph (UNITS= English), or km/hr (UNITS= Metric). Caution: See Motor Calibration before making any changes.
ACCELERATION TIME	25	25	60	Time, in seconds, to reach maximum speed from 0 mph (0 km/hr).
DECELERATION TIME	20	20	60	Time, in seconds, to reach 0 mph (0 km/hr) from maximum speed.
MODEL	-	E-SERIES	-	Treadmill Model

Item	Lowest Value	Default Value	Highest Value	Meaning
DATE	1.00	1.98	12.99	Treadmill manufacture date.
STOP SWITCH	-	-	-	Either E-Stop or Lanyard.
LAST DECK	0	0	65,535	Number of miles (UNITS= English), or km (UNITS= Metric) since the running deck was last serviced or replaced.
LAST BELT	0	0	65,535	Number of miles (UNITS= English) or km (UNITS= Metric) since the running belt was last replaced.
PROGRAM STATS	-	-	-	Provides access to programs usages and counters. (See Sub Menu)
LED TEST	-	-	-	LED Testing function, Press OK to begin
KEYPAD TEST	-	-	-	LED Testing function, Press OK to begin.
HEART RATE TEST	-	-	-	HEART RATE Test function.
SERIAL PORTS TEST	-	-	-	RS 232 Ports test (Manufacture Test Only).
ERROR STATS	-	-	-	Provides Access to Error List.
LAST ERROR LIST	-	-	-	Last Error List Menu, Press OK to View
CALIBRATION VALUES	-	-	-	Provides Access to View Calibration Data.
MOTOR CALIBRATION	-	-	-	Motor Calibration Function, Press OK to begin.
ELEV CALIBRATION	-	-	-	Elevation Calibration Function, Press OK to begin.
BURN IN MODE	-	-	-	Burn In Mode Function (Manufacture Only).

*When the MINIMUM SPEED or MAXIMUM SPEED parameters are changed, the Treadmill will perform an auto calibration. To terminate the auto calibration and return the parameter to its default setting, press the STOP key.








MOTOR CALIBRATION

The Motor Calibration function allows for calibration of the treadmill's speed function. CAUTION: Changing Max Speed setting may expose users to increase risk. Any changes to the treadmills maximum speed settings should be clearly communicated to all users of the treadmill. To enter the Motor Calibration function:

1. While in the Maintenance Mode, press the  key, or navigate to the Motor Calibration by the next  or the previous  parameter buttons .
2. While in the Motor Calibration, press the  key to begin the calibration. The information window will display "PWM= XXXXXX SPEED=XX.X" where the X's are data the that test will generate.
When the test is finished the information window will display one of the 2 messages "Passed Calibration" or "Failed Calibration". If "Failed Calibration" is displayed run test again, if it continues, call for maintenance.
3. Press the STOP key to exit the Motor Calibration function.

ELEVATION CALIBRATION

The Elevation Calibration function allows for calibration of the treadmill's elevation function. To enter the Elevation Calibration function:

1. While in the Maintenance Mode, navigate to the Elevation Calibration by the next  or the previous  parameter buttons. Press the  key, the Information Window will display the message "USE INCLINE +/- TO MOVE ELEVATION".
2. Press the  key, as necessary, until the treadmill is at its lowest elevation. When desired minimum elevation is obtained, press the  key.
3. Next press the  key, as necessary, until the treadmill is at its highest elevation. When desired maximum elevation is obtained, press the  key.
8. Press the STOP key to exit the Elevation Calibration function.

Star Trac recommends that you refer your questions about your **STAR TRAC E SERIES TREADMILL** operation and suspected malfunctions to Star Trac's Customer Service Hotline at (800) 503-1221, or USA 1-714-669-1660. However, you may wish to investigate error messages that appear in the Information Window. You may do so by reviewing the information in this section.

KEY DOWN: This error generally occurs when a key is held pressed while the **ON/OFF** switch is moved to **ON**. It may also happen if a key becomes stuck. When you see **KEY DOWN**:

- Set the **ON/OFF** switch to **OFF**; wait 2 seconds.
- Set the **ON/OFF** switch to **ON**. The treadmill should be operational again. Notify Star Trac if additional assistance is needed.

NO STOP: This error generally occurs when the Stop Switch is not connected tightly to the circuit board of the Display Control Panel. It may also happen if the circuitry associated with the switch develops a fault. When you see **NO STOP**:

- Set the **ON/OFF** switch to **OFF**; wait 2 seconds.
- Set the **ON/OFF** switch to **ON**. Notify Star Trac if additional assistance is needed.

CHECK SPEED SYS and SPEED CHANGE: These errors generally occur when the running belt speed sensor is disconnected, faulty, or misaligned relative to the revolutions-per-minute (RPM) sensor of the motor. They may also occur if the speed sensor cable is damaged, or if the Motor Control Board (MCB) is misadjusted or faulty. When you see **CHECK SPEED SYS** or **SPEED CHANGE**:

- Set the **ON/OFF** switch to **OFF**; wait 2 seconds.
- Set the **ON/OFF** switch to **ON**. Notify Star Trac if additional assistance is needed.

ELEV STALL, ELEV RANGE and ELEV LOST: These errors generally occur when the elevation (incline) potentiometer is faulty or out of limits, or the elevation motor is disconnected or receiving low power. They may also occur if the Motor Control Board (MCB) is faulty or the motor gears are stripped. They are usually accompanied by failure of the treadmill to rise from an elevation other than maximum (or descend from an elevation other than minimum), with attendant beep indication.

Free Manuals Download Website

<http://myh66.com>

<http://usermanuals.us>

<http://www.somanuals.com>

<http://www.4manuals.cc>

<http://www.manual-lib.com>

<http://www.404manual.com>

<http://www.luxmanual.com>

<http://aubethermostatmanual.com>

Golf course search by state

<http://golfingnear.com>

Email search by domain

<http://emailbydomain.com>

Auto manuals search

<http://auto.somanuals.com>

TV manuals search

<http://tv.somanuals.com>