

4 Bay USB 3.0 to SATA Hard Drive Dock for 2.5/3.5in Drives

SATDOCK4U3



*actual product may vary from photos

DE: Bedienungsanleitung - de.startech.com

FR: Guide de l'utilisateur - fr.startech.com

ES: Guía del usuario - es.startech.com

IT: Guida per l'uso - it.startech.com

NL: Gebruiksaanwijzing - nl.startech.com

PT: Guia do usuário - pt.startech.com

For the most up-to-date information, please visit: www.startech.com

Manual Revision: 07/18/2011

Download from Www.Somanuals.com. All Manuals Search And Download.

FCC Compliance Statement

This equipment has been tested and found to comply with the limits for a Class B digital device, pursuant to part 15 of the FCC Rules. These limits are designed to provide reasonable protection against harmful interference in a residential installation. This equipment generates, uses and can radiate radio frequency energy and, if not installed and used in accordance with the instructions, may cause harmful interference to radio communications. However, there is no guarantee that interference will not occur in a particular installation. If this equipment does cause harmful interference to radio or television reception, which can be determined by turning the equipment off and on, the user is encouraged to try to correct the interference by one or more of the following measures:

- Reorient or relocate the receiving antenna.
- Increase the separation between the equipment and receiver.
- Connect the equipment into an outlet on a circuit different from that to which the receiver is connected.
- Consult the dealer or an experienced radio/TV technician for help.

Use of Trademarks, Registered Trademarks, and other Protected Names and Symbols

This manual may make reference to trademarks, registered trademarks, and other protected names and/or symbols of third-party companies not related in any way to StarTech.com. Where they occur these references are for illustrative purposes only and do not represent an endorsement of a product or service by StarTech.com, or an endorsement of the product(s) to which this manual applies by the third-party company in question. Regardless of any direct acknowledgement elsewhere in the body of this document, StarTech.com hereby acknowledges that all trademarks, registered trademarks, service marks, and other protected names and/or symbols contained in this manual and related documents are the property of their respective holders.

Table of Contents

Introduction	1
Packaging Contents	1
System Requirements.....	1
Front View	2
Rear View	2
Installation	3
Hardware Installation	3
Driver Installation.....	3
Using the Storage Device	4
Specifications	5
Technical Support	6
Warranty Information	6

Introduction

The SATDOCK4U3 USB 3.0 4-Bay SATA Hard Drive Docking Station is a convenient, time-saving storage solution for 2.5-inch and 3.5-inch SATA hard drives (HDD) and solid state drives (SSD) that enables you to connect up to 4 SATA drives through a single host connection, while controlling the power status (on/off) of each individual drive independently from the rest.

The hard drive docking station features SuperSpeed USB 3.0 connectivity (also compatible with USB 2.0) which supports data transfer rates up to 10x faster than USB 2.0. Also with dual built-in, variable-speed 60mm cooling fans with manual control (including off). Double the value of this hard drive docking station, using a SATA to IDE hard drive adapter (SAT2IDEADP), which enables you to use any 2.5 or 3.5in IDE hard drive in a SATA hard drive dock slot.

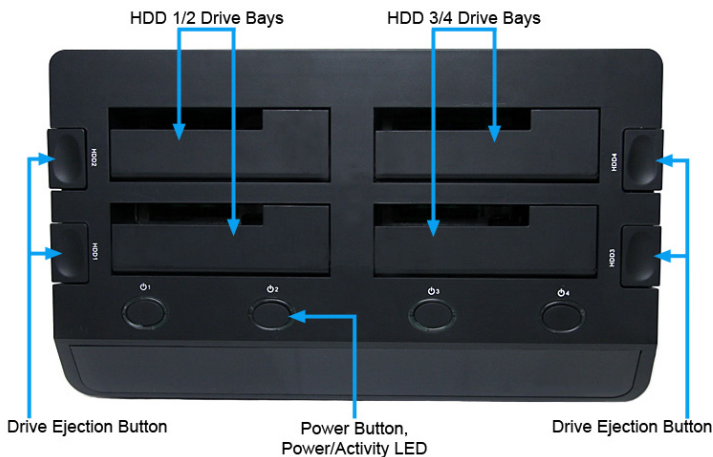
Packaging Contents

- 1 x 4 Bay SATA HDD Docking Station
- 1 x USB 3.0 cable
- 1 x Universal Power Adapter
- 3 x Power Cord (NA/UK/EU)
- 1 x Instruction Manual

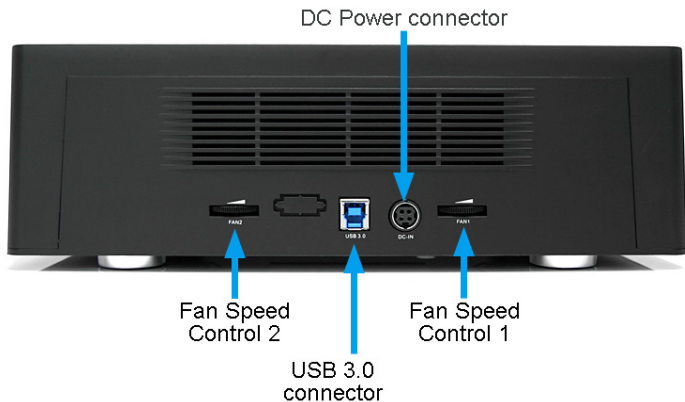
System Requirements

- USB enabled computer system with available USB port
- Available AC electrical outlet
- Microsoft® Windows® 2000/XP/Server 2003/Vista/Server 2008 R2/7 (32/64-bit), or Apple® Mac OS® X, or Linux®

Front View



Rear View



Installation



WARNING! Hard drives and storage enclosures require careful handling, especially when being transported. If you are not careful with your hard disk, lost data may result. Always handle your hard drive and storage device with caution. Be sure that you are properly grounded by wearing an anti-static strap when handling computer components or discharge yourself of any static electricity build-up by touching a large grounded metal surface (such as the computer case) for several seconds.

Hardware Installation

1. Connect the external power adapter from the hard drive docking station to an AC power outlet.
2. Insert 2.5in or 3.5in hard drive(s) into the top loading drive bay(s). Make sure that the SATA connectors on the hard drive are facing the same corner of the drive bay that has the 2.5in cutout in the door. The label on the hard drive should face the front of the SATA docking station.
3. Connect the included USB 3.0 cable from the hard drive docking station to an available USB port on the computer system. The computer can be ON or OFF. The USB 3.0 cable can be plugged into USB 2.0 ports, but will only run at USB 2.0 speeds.

NOTE: A USB 2.0 cable can be used in place of the USB 3.0 cable, however the dock will only run at USB 2.0 speeds.

4. Press the power buttons on the top of the hard drive docking station for each of the bays that contain a hard drive. The Power LED around the power buttons will light up.
5. To remove the hard drive, make sure it is currently not being accessed by the computer and the Activity LED is not flashing, then unmount or uninstall the disk drive from the operating system (see documentation for your operating system). Press the appropriate power button to turn off the hard drive and wait for the drive to power down. Press the drive ejection button on the top of the hard drive dock to release the drive, then pull the drive from the slot.

NOTE: Each drive can be independently powered on/off without affecting the other.

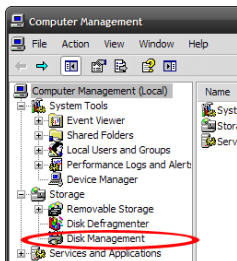
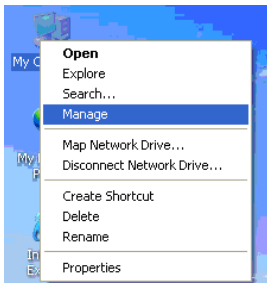
Driver Installation

No driver installation is required for the supported operating systems, as this hard drive dock is natively supported, so the drivers are already installed.

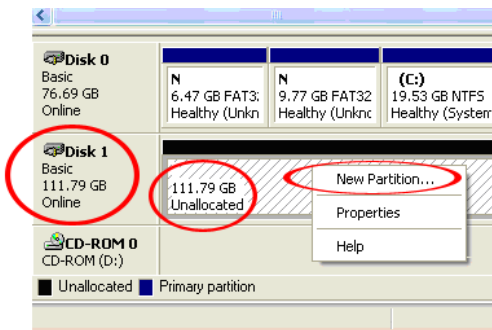
Using the Storage Device

Windows 2000/XP/Vista/7

If you are using a brand new hard drive that does not contain any data, then you will first need to prepare the hard drive for use. From the main desktop, right-click on "My Computer" ("Computer" in Vista/7), then select Manage. In the new Computer Management window, select Disk Management from the left window panel.



Locate the Disk that says it is "Unallocated" (check hard drive capacity to confirm it's the correct hard drive) and then right-click in the section that says "Unallocated" and select "New Partition".



Specifications

Number of Drive Bays	4
Host Interface	SuperSpeed USB 3.0
Chipset ID	VIA VL810 + ASMedia ASM1051
External Connectors	1 x USB 3.0 type B female 1 x DIN Power female
LEDs	4 x Drive Power 4 x Drive Activity
Fans	2 x 60mm
Maximum Data Transfer Rate	USB 3.0: 5 Gbps
Compatible Hard Drives	2.5in and 3.5in SATA hard drives/solid state drives
Insertion Rating	15, 000 cycles
Power Adapter	12V DC, 6500 mA
Operating Temperature	5°C ~ 80°C (41°F ~ 176°F)
Storage Temperature	-40°C ~ 70°C (-40°F ~ 158°F)
Humidity	8% ~ 90% RH
Dimensions	290.5mm x 172.7mm x 94.7mm
Weight	1054g
Compatible Operating Systems	Windows 2000/XP/Server 2003/Vista/ Server 2008 R2/7 (32/64-bit), Mac OS X, Linux

Technical Support

StarTech.com's lifetime technical support is an integral part of our commitment to provide industry-leading solutions. If you ever need help with your product, visit www.startech.com/support and access our comprehensive selection of online tools, documentation, and downloads.

For the latest drivers/software, please visit www.startech.com/downloads

Warranty Information

This product is backed by a two year warranty.

In addition, StarTech.com warrants its products against defects in materials and workmanship for the periods noted, following the initial date of purchase. During this period, the products may be returned for repair, or replacement with equivalent products at our discretion. The warranty covers parts and labor costs only. StarTech.com does not warrant its products from defects or damages arising from misuse, abuse, alteration, or normal wear and tear.

Limitation of Liability

In no event shall the liability of StarTech.com Ltd. and StarTech.com USA LLP (or their officers, directors, employees or agents) for any damages (whether direct or indirect, special, punitive, incidental, consequential, or otherwise), loss of profits, loss of business, or any pecuniary loss, arising out of or related to the use of the product exceed the actual price paid for the product. Some states do not allow the exclusion or limitation of incidental or consequential damages. If such laws apply, the limitations or exclusions contained in this statement may not apply to you.

Hard-to-find made easy. At StarTech.com, that isn't a slogan. It's a promise.

StarTech.com is your one-stop source for every connectivity part you need. From the latest technology to legacy products — and all the parts that bridge the old and new — we can help you find the parts that connect your solutions.

We make it easy to locate the parts, and we quickly deliver them wherever they need to go. Just talk to one of our tech advisors or visit our website. You'll be connected to the products you need in no time.

Visit www.startech.com for complete information on all StarTech.com products and to access exclusive resources and time-saving tools.

StarTech.com is an ISO 9001 Registered manufacturer of connectivity and technology parts. StarTech.com was founded in 1985 and has operations in the United States, Canada, the United Kingdom and Taiwan servicing a worldwide market.

Free Manuals Download Website

<http://myh66.com>

<http://usermanuals.us>

<http://www.somanuals.com>

<http://www.4manuals.cc>

<http://www.manual-lib.com>

<http://www.404manual.com>

<http://www.luxmanual.com>

<http://aubethermostatmanual.com>

Golf course search by state

<http://golfingnear.com>

Email search by domain

<http://emailbydomain.com>

Auto manuals search

<http://auto.somanuals.com>

TV manuals search

<http://tv.somanuals.com>