

SAT2510BU2B

Instruction Manual

USB 2.0 External Hard Drive Enclosure

**2.5" Black USB 2.0 SATA
External Hard Drive Enclosure
with One Button Backup**

INFO SAFE

StarTech.com 
Making hard-to-find easy!®

FCC Compliance Statement

This equipment has been tested and found to comply with the limits for a Class B digital device, pursuant to part 15 of the FCC Rules. These limits are designed to provide reasonable protection against harmful interference in a residential installation. This equipment generates, uses and can radiate radio frequency energy and, if not installed and used in accordance with the instructions, may cause harmful interference to radio communications. However, there is no guarantee that interference will not occur in a particular installation. If this equipment does cause harmful interference to radio or television reception, which can be determined by turning the equipment off and on, the user is encouraged to try to correct the interference by one or more of the following measures:

- Reorient or relocate the receiving antenna.
- Increase the separation between the equipment and receiver.
- Connect the equipment into an outlet on a circuit different from that to which the receiver is connected.
- Consult the dealer or an experienced radio/TV technician for help.

Use of Trademarks, Registered Trademarks, and other Protected Names and Symbols

This manual may make reference to trademarks, registered trademarks, and other protected names and/or symbols of third-party companies not related in any way to StarTech.com. Where they occur these references are for illustrative purposes only and do not represent an endorsement of a product or service by StarTech.com, or an endorsement of the product(s) to which this manual applies by the third-party company in question. Regardless of any direct acknowledgement elsewhere in the body of this document, StarTech.com hereby acknowledges that all trademarks, registered trademarks, service marks, and other protected names and/or symbols contained in this manual and related documents are the property of their respective holders.

Table of Contents

Introduction	1
Packaging Contents.....	1
System Requirements	1
Installation	1
Hardware Installation.....	1
Driver Installation.....	3
Backup Software Installation	3
Features	4
Specifications	5
Technical Support	6
Warranty Information	6

Introduction

Packaging Contents

- 1 x SAT2510BU2B enclosure
- 1 x USB 'Y' Cable
- 1 x User Manual
- 1 x Software CD

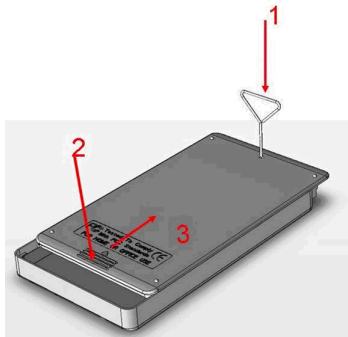
System Requirements

- USB 2.0 enabled computer
- Microsoft Windows® 98SE/ME/XP/Vista, Mac OS® X

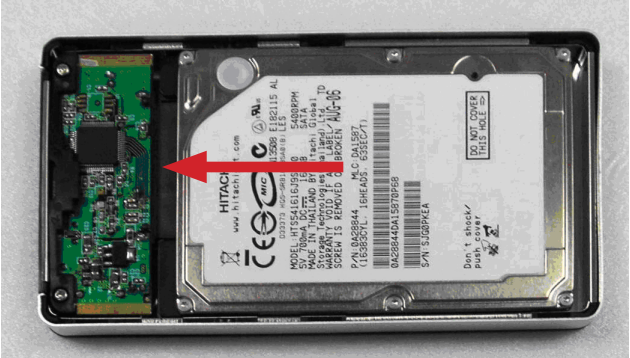
Installation

Hardware Installation

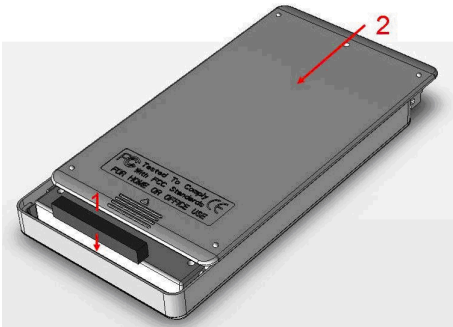
1. Open the case by pinching the ejection pinhole with a small tipped object and sliding off the back cover of the case.



- Place the HDD into the case and slide it into the SATA connector.



- Place the foam to fill up the gap between the HDD and enclosure. Assemble the case by sliding on the back cover. No screw is needed.

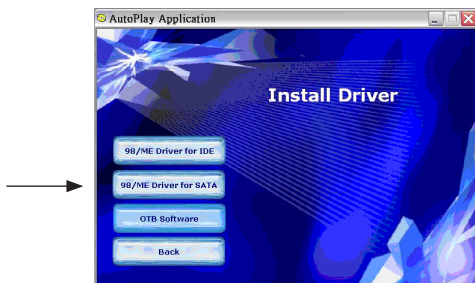


Driver Installation

Microsoft Windows® 2000 or later, and Mac OS® 10.x do not require driver installation, as this enclosure is natively supported.

Installation for Windows® 98SE/ME

1. Insert the software CD into the CD-ROM drive.
2. If Autorun does not play automatically, double-click “autorun.exe” from the CD.
3. Follow the instructions in the pop-up window for installing the 98/ME driver.

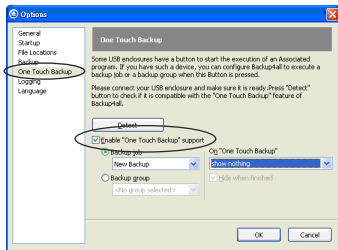


4. Make sure to install the correct driver for your HDD.

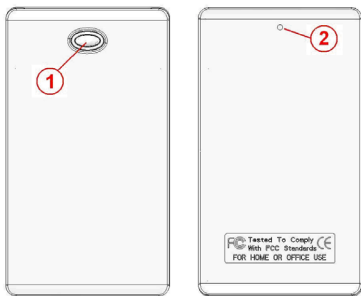
Backup Software Installation

1. Insert the software CD into the CD-ROM drive.
2. If Autorun does not play automatically, double-click “autorun.exe” from the CD.
3. Follow the instructions in the pop-up window for installing the OTB Software.
4. Once the Setup Wizard is complete, the Registration window should open. Enter the Registration Key on the CD and click “Register”.
5. Double-click “Backup4all” icon on the desk-top. Click “Tools” on the

pop-up windows then select "Options". Check the Enable "One Touch Backup" column.



Features



1	One Touch Backup Button
2	Ejection pinhole
3	USB connector
4	DC power input (adapter or USB-DC cable)

Specifications

Interface	USB 2.0 (backwards compatible with USB 1.x)
External Connectors	1 x USB type B 1 x DC power connector
Internal Connectors	1 x 7-pin SATA data 1 x 15-pin SATA power
Hard Drive type	2.5" SATA hard drive, 9.5mm height
Maximum Data Transfer Rate	USB - 480 Mbps
LEDs	1 x blue (power)
Dimensions	135mm x 77mm x 16mm
Operating System Support	Windows® 98SE/ME/2000/XP/ Vista, Mac OS® X

Technical Support

StarTech.com's lifetime technical support is an integral part of our commitment to provide industry-leading solutions. If you ever need help with your product, visit www.startech.com/support and access our comprehensive selection of online tools, documentation, and downloads.

Warranty Information

This product is backed by a one year warranty.

In addition, StarTech.com warrants its products against defects in materials and workmanship for the periods noted, following the initial date of purchase. During this period, the products may be returned for repair, or replacement with equivalent products at our discretion. The warranty covers parts and labor costs only. StarTech.com does not warrant its products from defects or damages arising from misuse, abuse, alteration, or normal wear and tear.

Limitation of Liability

In no event shall the liability of StarTech.com Ltd. and StarTech.com USA LLP (or their officers, directors, employees or agents) for any damages (whether direct or indirect, special, punitive, incidental, consequential, or otherwise), loss of profits, loss of business, or any pecuniary loss, arising out of or related to the use of the product exceed the actual price paid for the product. Some states do not allow the exclusion or limitation of incidental or consequential damages. If such laws apply, the limitations or exclusions contained in this statement may not apply to you.



StarTech.com has been making “hard-to-find easy” since 1985, providing high quality solutions to a diverse IT and A/V customer base that spans many channels, including government, education and industrial facilities to name just a few. We offer an unmatched selection of computer parts, cables, A/V products, KVM and Server Management solutions, serving a worldwide market through our locations in the United States, Canada, the United Kingdom and Taiwan.

Visit **www.startech.com** today for complete information about all our products and to access exclusive interactive tools such as the Cable Finder, Parts Finder and the KVM Reference Guide.

Free Manuals Download Website

<http://myh66.com>

<http://usermanuals.us>

<http://www.somanuals.com>

<http://www.4manuals.cc>

<http://www.manual-lib.com>

<http://www.404manual.com>

<http://www.luxmanual.com>

<http://aubethermostatmanual.com>

Golf course search by state

<http://golfingnear.com>

Email search by domain

<http://emailbydomain.com>

Auto manuals search

<http://auto.somanuals.com>

TV manuals search

<http://tv.somanuals.com>