

3.5in eSATA USB Black SATA External Hard Drive Enclosure

SAT3510BU2E

SAT3510BUEGB

SAT3510BUEEU



*actual product may vary from photos

DE: Bedienungsanleitung - de.startech.com

FR: Guide de l'utilisateur - fr.startech.com

ES: Guía del usuario - es.startech.com

IT: Guida per l'uso - it.startech.com

NL: Gebruiksaanwijzing - nl.startech.com

PT: Guia do usuário - pt.startech.com

For the most up-to-date information, please visit: www.startech.com

Manual Revision: 04/18/2013

Download from Www.Somanuals.com. All Manuals Search And Download.

FCC Compliance Statement

This equipment has been tested and found to comply with the limits for a Class B digital device, pursuant to part 15 of the FCC Rules. These limits are designed to provide reasonable protection against harmful interference in a residential installation. This equipment generates, uses and can radiate radio frequency energy and, if not installed and used in accordance with the instructions, may cause harmful interference to radio communications. However, there is no guarantee that interference will not occur in a particular installation. If this equipment does cause harmful interference to radio or television reception, which can be determined by turning the equipment off and on, the user is encouraged to try to correct the interference by one or more of the following measures:

- Reorient or relocate the receiving antenna.
- Increase the separation between the equipment and receiver.
- Connect the equipment into an outlet on a circuit different from that to which the receiver is connected.
- Consult the dealer or an experienced radio/TV technician for help.

Use of Trademarks, Registered Trademarks, and other Protected Names and Symbols

This manual may make reference to trademarks, registered trademarks, and other protected names and/or symbols of third-party companies not related in any way to StarTech.com. Where they occur these references are for illustrative purposes only and do not represent an endorsement of a product or service by StarTech.com, or an endorsement of the product(s) to which this manual applies by the third-party company in question. Regardless of any direct acknowledgement elsewhere in the body of this document, StarTech.com hereby acknowledges that all trademarks, registered trademarks, service marks, and other protected names and/or symbols contained in this manual and related documents are the property of their respective holders.

Table of Contents

Introduction	1
Features	1
Package Contents	1
Hardware Guide	2
Rear Panel	2
Hardware Installation	2
Inserting a Hard Drive.....	2
Removing a Hard Drive	4
Recognizing the Hard Drive	5
Windows XP	5
Windows Vista™	7
Safe Drive Removal	8
Specifications	9
Technical Support	10
Warranty Information.....	10

Introduction

Thank you for purchasing a StarTech.com InfoSafe 3.5" eSATA/USB 2.0 Removable SATA HD Enclosure. Supporting the latest generation of hard drive storage (up to 1TB SATA hard drives), this enclosure allows the use of any 3.5" SATA II (SATA /300) or SATA (SATA /150) and can be connected to a host computer using either eSATA or USB.

Features

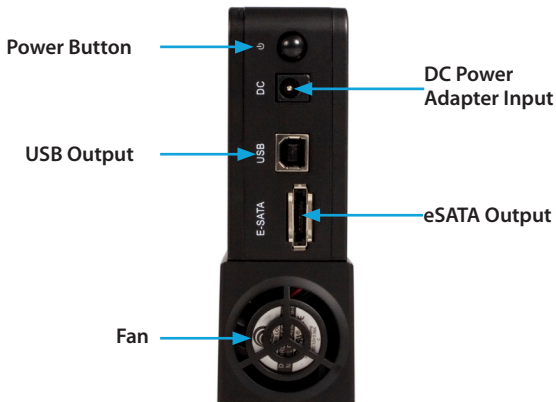
- Built-in 40mm fan to provide efficient cooling of enclosed hard drive
- Durable construction, comprised of metal and hard ABS material helps to minimize damage to the hard drive while in transit, and enhance drive heat dissipation
- Built-in stand offers stable vertical design offers optimal removal and insertion of hard drive
- Rear power ON/OFF button
- Highly visible front LED lights indicate power and hard drive activity
- Plug and Play support

Package Contents

- 1 x Enclosure
- 1 x eSATA Cable
- 1 x Manual
- 1 x Power Adapter
- 1 x USB 2.0 Cable

Hardware Guide

Rear Panel



Hardware Installation

Inserting a Hard Drive

1. Unlock the keylock situated on the front of the SAT3510BU2E.



2. Lift the handle on the front panel and pull the front panel door out from the body (as shown below).

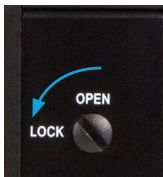


3. Place the hard drive into the SAT3510BU2E, SAT3510BUEGB, SAT3510BUEEU. The printed label on the hard drive should be on the right hand side, with the SATA connector on the lower half of the drive.
4. Push the door to slide the hard drive into place. Do not push the hard drive into the



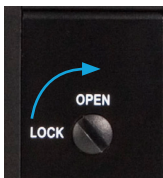
enclosure by hand, otherwise it may not be properly installed.

5. Turn the key lock into lock position to complete the physical installation.



Removing a Hard Drive

1. Unlock the key lock.



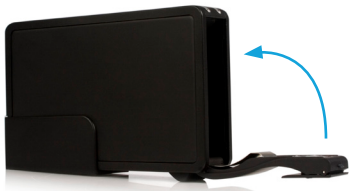
2. Lift the handle on the front panel and pull the front panel door out from the body.



3. Carefully remove the hard drive from the enclosure.



4. Close the door. It is suggested that you lock the key lock.



Recognizing the Hard Drive

Windows XP

USB 2.0

If you are using the USB 2.0 interface to connect the hard drive to your computer, no setup is required. Simply plug the hard drive into an available USB port and turn the power on to the SAT3510BU2E.

When you open **My Computer** the drive should be visible under the heading *Devices with Removable Storage*.

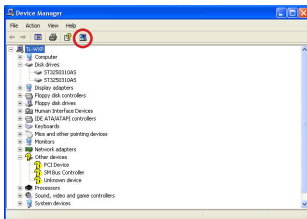
eSATA

If you are using the eSATA interface to connect the hard drive to your computer, there are two setup processes you can follow.

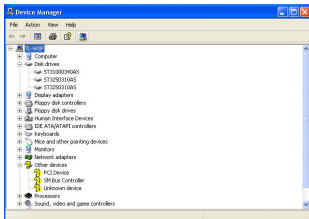
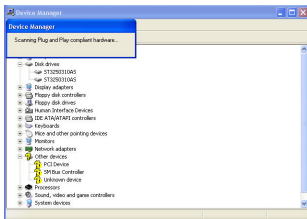
If the hard drive is powered on upon booting up the computer, it will automatically detect the drive. Otherwise, if you connect and power on the hard drive once the computer has already been booted up, you will need to open the Device Manager to scan for it.

The following directions outline the necessary steps to access your hard drive when the computer has already been booted up:

1. Right-click **My Computer** and click **Manage**.
2. In the left pane, select **Device Manager**.
3. In the Device Manager window, click the “+” next to Disk Drives. Since the drive was not powered on during the boot up process, it should not yet be visible.
4. Turn on the SAT3510BU2E, SAT3510BUEGB, SAT3510BUEEU. Once the power indicator is illuminated, click the **Scan** button.



5. The Device Manager will scan for plug and play hardware. Once it has completed the scan, your drive should be visible below the Disk Drives heading.



Windows Vista™ / 7

USB 2.0

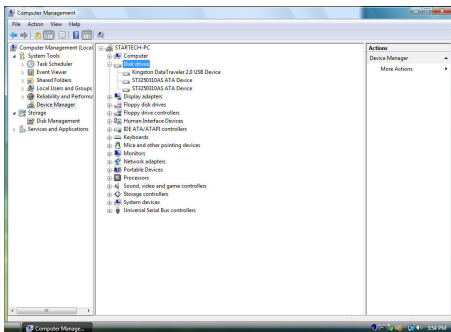
If you are using the USB 2.0 interface to connect the hard drive to your computer, no setup is required. Simply plug the hard drive into an available USB port and turn the power on to the SAT3510BU2E, SAT3510BUEGB, SAT3510BUEEU. Open My Computer and the drive should be visible under the heading "Devices with Removable Storage."

eSATA

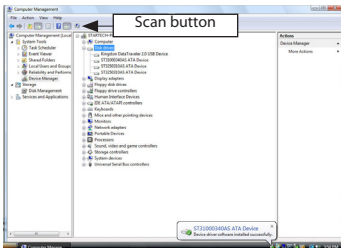
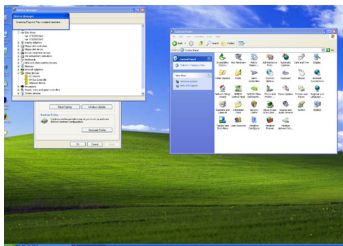
If you are using the eSATA interface to connect the hard drive to your computer, there are two setup processes you can follow.

If the hard drive is powered on upon booting up the computer, it will automatically detect the drive. Otherwise, if you connect and power on the hard drive once the computer has already been booted up, you will need to open the Device Manager to scan for it. The following directions outline the necessary steps to access your hard drive when the computer has already been booted up:

1. Right-click **Computer**, and select **Manage**.



2. In the left pane of the Computer Management window, select "Device Manager."
3. Turn on the SAT3510BU2E. Once the power indicator is illuminated, click the "Scan" button.



4. The Device Manager will begin an installation of the necessary driver software. Once it has completed the scan, your drive should be visible below the Disk Drives heading.

Safe Drive Removal

Ensure that any programs that have accessed the drive are closed.

You may wish to use your operating system's "safe removal" feature to be absolutely sure that no data is being written to or read from the hard drive in the enclosure when you disconnect it from the computer.



In Windows, you can click the Safe Remove icon (see above) and choose the enclosure from the menu. In Mac OS, you can drag the icon for the drive to the trash to "eject" it and stop it safely.

You can now safely remove the USB 2.0 data cable from the enclosure.

Specifications

SAT3510BU2E / SAT3510BUEGB / SAT3510BUEEU	
Connector Types	1 x eSATA Plug 1 x USB B Female
Chipset	INIC 1611
Data Transfer Rate	3Gb/s (eSATA) 480Mbps (USB 2.0)
Drive Capacity Support	Up to 1 TB
Drive Type Compatibility	SATA 300 (SATA II) SATA 150 (SATA I)
O/S Compatibility	Windows 98SE, ME, 2000 XP, Vista™, 7 Mac OS 8.6, 10.0 and up; Linux

Technical Support

StarTech.com's lifetime technical support is an integral part of our commitment to provide industry-leading solutions. If you ever need help with your product, visit www.startech.com/support and access our comprehensive selection of online tools, documentation, and downloads.

For the latest drivers/software, please visit www.startech.com/downloads

Warranty Information

This product is backed by a two year warranty.

In addition, StarTech.com warrants its products against defects in materials and workmanship for the periods noted, following the initial date of purchase. During this period, the products may be returned for repair, or replacement with equivalent products at our discretion. The warranty covers parts and labor costs only. StarTech.com does not warrant its products from defects or damages arising from misuse, abuse, alteration, or normal wear and tear.

Limitation of Liability

In no event shall the liability of StarTech.com Ltd. and StarTech.com USA LLP (or their officers, directors, employees or agents) for any damages (whether direct or indirect, special, punitive, incidental, consequential, or otherwise), loss of profits, loss of business, or any pecuniary loss, arising out of or related to the use of the product exceed the actual price paid for the product. Some states do not allow the exclusion or limitation of incidental or consequential damages. If such laws apply, the limitations or exclusions contained in this statement may not apply to you.

Hard-to-find made easy. At StarTech.com, that isn't a slogan. It's a promise.

StarTech.com is your one-stop source for every connectivity part you need. From the latest technology to legacy products — and all the parts that bridge the old and new — we can help you find the parts that connect your solutions.

We make it easy to locate the parts, and we quickly deliver them wherever they need to go. Just talk to one of our tech advisors or visit our website. You'll be connected to the products you need in no time.

Visit www.startech.com for complete information on all StarTech.com products and to access exclusive resources and time-saving tools.

StarTech.com is an ISO 9001 Registered manufacturer of connectivity and technology parts. StarTech.com was founded in 1985 and has operations in the United States, Canada, the United Kingdom and Taiwan servicing a worldwide market.

Free Manuals Download Website

<http://myh66.com>

<http://usermanuals.us>

<http://www.somanuals.com>

<http://www.4manuals.cc>

<http://www.manual-lib.com>

<http://www.404manual.com>

<http://www.luxmanual.com>

<http://aubethermostatmanual.com>

Golf course search by state

<http://golfingnear.com>

Email search by domain

<http://emailbydomain.com>

Auto manuals search

<http://auto.somanuals.com>

TV manuals search

<http://tv.somanuals.com>