

USB 3.0/eSATA to SATA III HDD Dock with Fan and UASP

SDOCKU33EF



*actual product may vary from photo

DE: Bedienungsanleitung - de.startech.com

FR: Guide de l'utilisateur - fr.startech.com

ES: Guía del usuario - es.startech.com

IT: Guida per l'uso - it.startech.com

NL: Gebruiksaanwijzing - nl.startech.com

PT: Guia do usuário - pt.startech.com

For the most up-to-date information, please visit: www.startech.com

Manual Revision: 12/08/2014

Download from [Www.Somanuals.com](http://www.Somanuals.com). All Manuals Search And Download.

FCC Compliance Statement

This equipment has been tested and found to comply with the limits for a Class B digital device, pursuant to part 15 of the FCC Rules. These limits are designed to provide reasonable protection against harmful interference in a residential installation. This equipment generates, uses and can radiate radio frequency energy and, if not installed and used in accordance with the instructions, may cause harmful interference to radio communications. However, there is no guarantee that interference will not occur in a particular installation. If this equipment does cause harmful interference to radio or television reception, which can be determined by turning the equipment off and on, the user is encouraged to try to correct the interference by one or more of the following measures:

- Reorient or relocate the receiving antenna.
- Increase the separation between the equipment and receiver.
- Connect the equipment into an outlet on a circuit different from that to which the receiver is connected.
- Consult the dealer or an experienced radio/TV technician for help.

Use of Trademarks, Registered Trademarks, and other Protected Names and Symbols

This manual may make reference to trademarks, registered trademarks, and other protected names and/or symbols of third-party companies not related in any way to StarTech.com. Where they occur these references are for illustrative purposes only and do not represent an endorsement of a product or service by StarTech.com, or an endorsement of the product(s) to which this manual applies by the third-party company in question. Regardless of any direct acknowledgement elsewhere in the body of this document, StarTech.com hereby acknowledges that all trademarks, registered trademarks, service marks, and other protected names and/or symbols contained in this manual and related documents are the property of their respective holders.

Table of Contents

Introduction	1
Packaging Contents	1
System Requirements.....	1
Front View	2
Rear View	2
Installation	3
Hardware Installation	3
Driver Installation.....	4
Using the Storage Device	5
Technical Support	7
Warranty Information	7

Introduction

The SATDOCKU3SEF eSATA/USB 3.0 to SATA Hard Drive Docking Station with Fan delivers quick and easy access to a 2.5in or 3.5in SATA hard disk drive (HDD) or solid state drive (SSD) through either eSATA or USB connectivity, making it compatible with almost any system. A built-in 80mm cooling fan provides increased reliability and lifespan to HDDs, while also making them easier to handle when it comes time to remove them from the dock. The variable fan speed control allows for on-the-fly adjustments for any type of HDD or to balance cooling with noise. eSATA provides data transfer rates up to 3 Gbps, while USB 3.0 provides up to 5 Gbps while still being backwards compatible with USB 2.0 systems at 480 Mbps. Extending the versatility with the SATA to IDE hard drive adapter (SAT2IDEADP) allows for 2.5in or 3.5in IDE HDD to be used in a SATA dock.

Packaging Contents

- 1x eSATA / USB 3.0 SATA HDD DOCK
- 1x 1m USB 3.0 Cable
- 1x 1m eSATA Cable
- 1x Universal Power Adapter (NA/UK/EU/AUS)
- 1x Instruction Manual

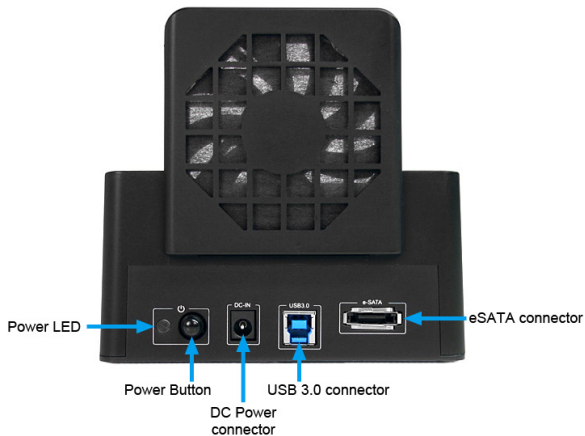
System Requirements

- USB enabled computer system with available USB port
- or
- SATA enabled computer system with available eSATA port
- Available AC electrical outlet

Front View



Rear View



Installation

WARNING! Hard drives and storage enclosures require careful handling, especially when being transported. If you are not careful with your hard disk, lost data may result. Always handle your hard drive and storage device with caution. Be sure that you are properly grounded by wearing an anti-static strap when handling computer components or discharge yourself of any static electricity build-up by touching a large grounded metal surface (such as the computer case) for several seconds.

Hardware Installation

1. Connect the external power adapter from the hard drive dock to an electrical outlet.
2. Insert a 2.5" or 3.5" hard drive into the top loading slot. Make sure that the connectors on the hard drive are facing the same corner of the slot that has a cutout in the door. The label on the hard drive should face the front of the hard drive dock.
3. Connect the included USB 3.0 cable from the hard drive dock to an available USB 3.0 or 2.0 port on the computer system. The computer can be on or off.

NOTE: A USB 2.0 A-B cable could be used as a substitute on the hard drive dock but will be restricted to USB 2.0 speeds.

or

Connect the included eSATA cable from the hard drive dock to an available eSATA port on the computer system. The computer can be on or off.

NOTE: It is not recommended that both USB and eSATA be connected at the same time, however eSATA will be the default connection if both are connected.

4. Press the power button on the rear of the hard drive dock. The Power LED next to the power button as well as the LED on the top of the dock will light up.

NOTE: If no host connection is detected (USB cable unplugged or computer turned off), the dock will automatically go into Suspend Mode and power down the SATA drive until an active host connection is detected. The LED on the top of the dock will turn off however the LED on the rear of the dock will stay lit.

5. The operating system will automatically detect and install the SATA drive. Once complete, the drive should be ready for use.
6. Adjust the fan speed control dial on the side of the docking station, to the desired speed or turn it off completely.

NOTE: When connected via USB, the Dock will automatically go into Suspend Mode if the connection is left idle for more than 5 minutes. The SATA drive will be powered down and the fan stopped still visible to the operating system (the LED on the top of the dock will also turn off however the LED on the rear of the dock will stay lit). Accessing the SATA drive will automatically cancel Suspend Mode and power the drive back up. This does not apply to eSATA connections, which are always active.

7. To remove the hard drive, make sure it is currently not being accessed by the computer then unmount or uninstall the disk drive from the operating system (see documentation for your operating system).
8. Press the power button to turn off the hard drive dock and wait for the drive to power down.
9. Press the drive ejection button on the top of the hard drive dock to release the drive then pull the drive from the slot.

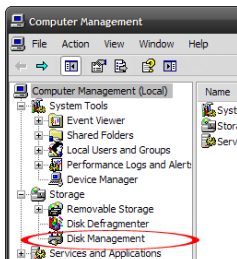
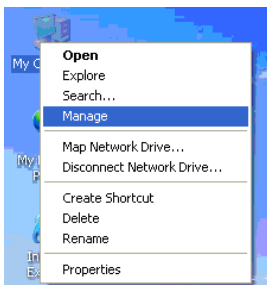
Driver Installation

No driver installation is required for the compatible operating systems, as this enclosure is natively supported, so the drivers are already installed.

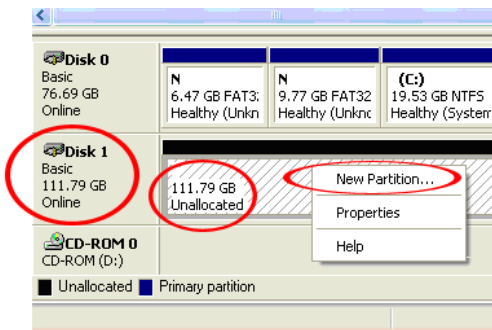
Using the Storage Device

Windows

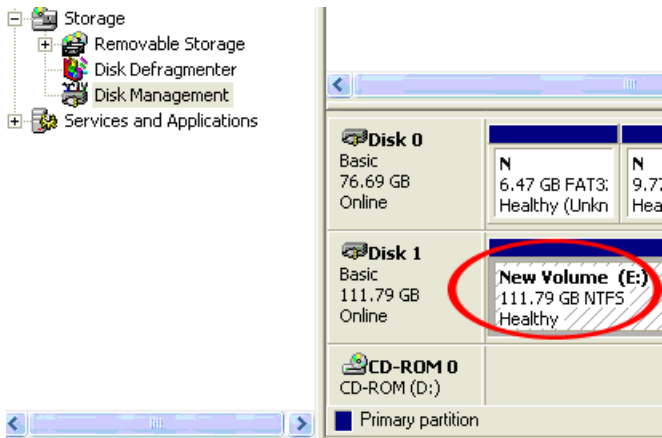
If you are using a brand new hard drive that does not contain any data, then you will first need to prepare the hard drive for use. From the main desktop, right-click on "My Computer" ("Computer" in Vista/7), then select Manage. In the new Computer Management window, select Disk Management from the left window panel.



Locate the Disk that says it is "Unallocated" (check hard drive capacity to confirm it's the correct hard drive) and then right-click in the section that says "Unallocated" and select "New Partition".



The New Partition Wizard will appear. Follow the instructions in the wizard to complete setting up the drive. Once complete, the Disk should show up as “Healthy” with a drive letter assigned (i.e. E:). This drive letter should now appear within My Computer.



If you are installing a hard drive that already has data on it, then after plugging it in, the drive should automatically show up with a drive letter assigned within My Computer.

Technical Support

StarTech.com's lifetime technical support is an integral part of our commitment to provide industry-leading solutions. If you ever need help with your product, visit www.startech.com/support and access our comprehensive selection of online tools, documentation, and downloads.

Warranty Information

This product is backed by a two year warranty.

In addition, StarTech.com warrants its products against defects in materials and workmanship for the periods noted, following the initial date of purchase. During this period, the products may be returned for repair, or replacement with equivalent products at our discretion. The warranty covers parts and labor costs only. StarTech.com does not warrant its products from defects or damages arising from misuse, abuse, alteration, or normal wear and tear.

Limitation of Liability

In no event shall the liability of StarTech.com Ltd. and StarTech.com USA LLP (or their officers, directors, employees or agents) for any damages (whether direct or indirect, special, punitive, incidental, consequential, or otherwise), loss of profits, loss of business, or any pecuniary loss, arising out of or related to the use of the product exceed the actual price paid for the product. Some states do not allow the exclusion or limitation of incidental or consequential damages. If such laws apply, the limitations or exclusions contained in this statement may not apply to you.

Hard-to-find made easy. At StarTech.com, that isn't a slogan. It's a promise.

StarTech.com is your one-stop source for every connectivity part you need. From the latest technology to legacy products — and all the parts that bridge the old and new — we can help you find the parts that connect your solutions.

We make it easy to locate the parts, and we quickly deliver them wherever they need to go. Just talk to one of our tech advisors or visit our website. You'll be connected to the products you need in no time.

Visit www.startech.com for complete information on all StarTech.com products and to access exclusive resources and time-saving tools.

StarTech.com is an ISO 9001 Registered manufacturer of connectivity and technology parts. StarTech.com was founded in 1985 and has operations in the United States, Canada, the United Kingdom and Taiwan servicing a worldwide market.

Free Manuals Download Website

<http://myh66.com>

<http://usermanuals.us>

<http://www.somanuals.com>

<http://www.4manuals.cc>

<http://www.manual-lib.com>

<http://www.404manual.com>

<http://www.luxmanual.com>

<http://aubethermostatmanual.com>

Golf course search by state

<http://golfingnear.com>

Email search by domain

<http://emailbydomain.com>

Auto manuals search

<http://auto.somanuals.com>

TV manuals search

<http://tv.somanuals.com>