

## 2 Port ExpressCard SuperSpeed USB 3.0 Card

ECUSB3S22



\*actual product may vary from photos

DE: Bedienungsanleitung - [de.startech.com](http://de.startech.com)

FR: Guide de l'utilisateur - [fr.startech.com](http://fr.startech.com)

ES: Guía del usuario - [es.startech.com](http://es.startech.com)

IT: Guida per l'uso - [it.startech.com](http://it.startech.com)

NL: Gebruiksaanwijzing - [nl.startech.com](http://nl.startech.com)

PT: Guia do usuário - [pt.startech.com](http://pt.startech.com)

For the most up-to-date information, please visit: [www.startech.com](http://www.startech.com)

Manual Revision: 09/01/2011

Download from [Www.Somanuals.com](http://www.Somanuals.com). All Manuals Search And Download.

## FCC Compliance Statement

This equipment has been tested and found to comply with the limits for a Class B digital device, pursuant to part 15 of the FCC Rules. These limits are designed to provide reasonable protection against harmful interference in a residential installation. This equipment generates, uses and can radiate radio frequency energy and, if not installed and used in accordance with the instructions, may cause harmful interference to radio communications. However, there is no guarantee that interference will not occur in a particular installation. If this equipment does cause harmful interference to radio or television reception, which can be determined by turning the equipment off and on, the user is encouraged to try to correct the interference by one or more of the following measures:

- Reorient or relocate the receiving antenna.
- Increase the separation between the equipment and receiver.
- Connect the equipment into an outlet on a circuit different from that to which the receiver is connected.
- Consult the dealer or an experienced radio/TV technician for help.

## Use of Trademarks, Registered Trademarks, and other Protected Names and Symbols

This manual may make reference to trademarks, registered trademarks, and other protected names and/or symbols of third-party companies not related in any way to StarTech.com. Where they occur these references are for illustrative purposes only and do not represent an endorsement of a product or service by StarTech.com, or an endorsement of the product(s) to which this manual applies by the third-party company in question. Regardless of any direct acknowledgement elsewhere in the body of this document, StarTech.com hereby acknowledges that all trademarks, registered trademarks, service marks, and other protected names and/or symbols contained in this manual and related documents are the property of their respective holders.

# Table of Contents

|                                   |          |
|-----------------------------------|----------|
| <b>Introduction</b> .....         | <b>1</b> |
| Packaging Contents .....          | 1        |
| System Requirements.....          | 1        |
| <b>Installation</b> .....         | <b>2</b> |
| Hardware Installation .....       | 2        |
| Driver Installation.....          | 2        |
| Verifying Installation .....      | 3        |
| <b>Specifications</b> .....       | <b>4</b> |
| <b>Technical Support</b> .....    | <b>5</b> |
| <b>Warranty Information</b> ..... | <b>5</b> |

# Introduction

The ECUSB3S22 2-Port ExpressCard USB 3.0 Card adds 2 SuperSpeed USB 3.0 ports to an ExpressCard-enabled computer system, using a 34mm form factor that will fit in both 34mm and 54mm slots, along with ports mounted side-by-side to provide room for easy access.

USB 3.0 supports data transfer rates up to 5 Gbps (10x faster than USB 2.0) and is able to provide more power per port, to help support faster and more powerful devices. Also, this ExpressCard adapter is backward compatible with USB 2.0/1.x, so all of your existing devices will still work.

## Packaging Contents

- 1 x ExpressCard USB 3.0 Card
- 1 x USB to DC Power Cable
- 1 x Driver CD
- 1 x Instruction Manual

## System Requirements

- ExpressCard enabled computer system with available ExpressCard slot
- Microsoft® Windows® XP/Server 2003/Vista/Server 2008 R2/7 (32/64-bit)

# Installation

## Hardware Installation

The ExpressCard adapter will simply slide into the ExpressCard slot on any compatible system. Push the card all the way in, until it 'clicks' and locks into place. To eject the card, simply push the card further into the slot until it clicks, and then release and it will then be automatically ejected from the slot.

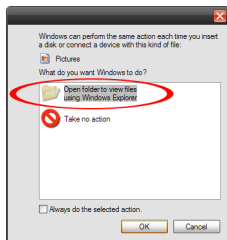
**NOTE:** Some ExpressCard/54 slots do not firmly hold an ExpressCard/34 card so a 34mm to 54mm stabilizer bracket may be necessary (StarTech.com ID: ECBRACKET).

**OPTIONAL:** For some high-powered USB devices, additional power may be required from the USB port. A power jack is provided for connecting the included USB to DC Power Adapter Cable or an external power adapter (not included), to help support such devices.

## Driver Installation

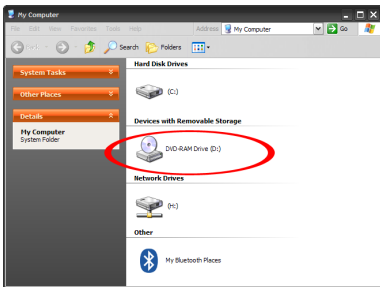
### Windows XP/Server 2003/Vista/7

1. Once the computer has started and the operating system is fully loaded, insert the provided Driver CD into the computer's CD/DVD drive.
2. Autorun should give you the option to browse the files on the CD or automatically open the CD.



\*photos/screenshots are for reference only

If Autorun does not start, Go into "My Computer" and access the CD/DVD drive that the CD is in.

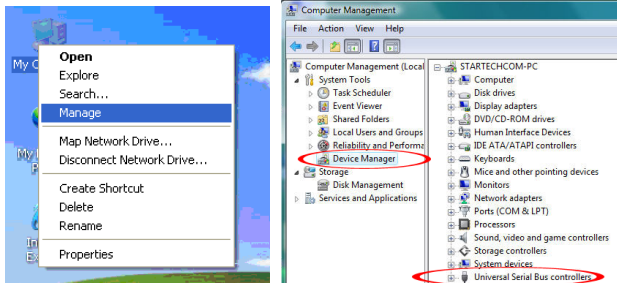


3. Run the "setup.exe" file located in "NEC 7202". Follow the onscreen instructions to complete the driver installation.

## Verifying Installation

### Windows XP/Server 2003/Vista/7

From the main desktop, right-click on "My Computer" ("Computer" in Vista/7), then select Manage. In the new Computer Management window, select Device Manager from the left window panel.



In the Device Manager, under the Universal Serial Bus Controllers category, you should see the new entries for the USB 3.0 controller card.

# Specifications

|                                   |                              |
|-----------------------------------|------------------------------|
| <b>Host Interface</b>             | ExpressCard 2.0              |
| <b>Form Factor</b>                | ExpressCard/34 (34mm)        |
| <b>Chipset ID</b>                 | NEC 720200                   |
| <b>Connectors</b>                 | 2 x USB 3.0 type A female    |
| <b>Maximum Data Transfer Rate</b> | USB 3.0: 5 Gbps              |
| <b>Operating Temperature</b>      | 0°C ~ 50°C (32°F ~ 122°F)    |
| <b>Storage Temperature</b>        | -20°C ~ 150°C (-4°F ~ 302°F) |
| <b>Dimensions</b>                 | 115.0mm x 34.0mm x 13.0mm    |
| <b>Weight</b>                     | 32g                          |

# Technical Support

StarTech.com's lifetime technical support is an integral part of our commitment to provide industry-leading solutions. If you ever need help with your product, visit [www.startech.com/support](http://www.startech.com/support) and access our comprehensive selection of online tools, documentation, and downloads.

For the latest drivers/software, please visit [www.startech.com/downloads](http://www.startech.com/downloads)

## Warranty Information

This product is backed by a lifetime warranty.

In addition, StarTech.com warrants its products against defects in materials and workmanship for the periods noted, following the initial date of purchase. During this period, the products may be returned for repair, or replacement with equivalent products at our discretion. The warranty covers parts and labor costs only. StarTech.com does not warrant its products from defects or damages arising from misuse, abuse, alteration, or normal wear and tear.

### Limitation of Liability

In no event shall the liability of StarTech.com Ltd. and StarTech.com USA LLP (or their officers, directors, employees or agents) for any damages (whether direct or indirect, special, punitive, incidental, consequential, or otherwise), loss of profits, loss of business, or any pecuniary loss, arising out of or related to the use of the product exceed the actual price paid for the product. Some states do not allow the exclusion or limitation of incidental or consequential damages. If such laws apply, the limitations or exclusions contained in this statement may not apply to you.



Hard-to-find made easy. At StarTech.com, that isn't a slogan. It's a promise.

StarTech.com is your one-stop source for every connectivity part you need. From the latest technology to legacy products — and all the parts that bridge the old and new — we can help you find the parts that connect your solutions.

We make it easy to locate the parts, and we quickly deliver them wherever they need to go. Just talk to one of our tech advisors or visit our website. You'll be connected to the products you need in no time.

Visit [www.startech.com](http://www.startech.com) for complete information on all StarTech.com products and to access exclusive resources and time-saving tools.

*StarTech.com is an ISO 9001 Registered manufacturer of connectivity and technology parts. StarTech.com was founded in 1985 and has operations in the United States, Canada, the United Kingdom and Taiwan servicing a worldwide market.*

## Free Manuals Download Website

<http://myh66.com>

<http://usermanuals.us>

<http://www.somanuals.com>

<http://www.4manuals.cc>

<http://www.manual-lib.com>

<http://www.404manual.com>

<http://www.luxmanual.com>

<http://aubethermostatmanual.com>

Golf course search by state

<http://golfingnear.com>

Email search by domain

<http://emailbydomain.com>

Auto manuals search

<http://auto.somanuals.com>

TV manuals search

<http://tv.somanuals.com>