

USB 3.0 to 3.5" SATA III Upright HDD Enclosure with UASP

S3510BMU33B



*actual product may vary from photos

DE: Bedienungsanleitung - de.startech.com

FR: Guide de l'utilisateur - fr.startech.com

ES: Guía del usuario - es.startech.com

IT: Guida per l'uso - it.startech.com

NL: Gebruiksaanwijzing - nl.startech.com

PT: Guia do usuário - pt.startech.com

For the most up-to-date information, please visit: www.startech.com

Manual Revision: 03/05/2014

Download from Www.Somanuals.com. All Manuals Search And Download.

FCC Compliance Statement

This equipment has been tested and found to comply with the limits for a Class B digital device, pursuant to part 15 of the FCC Rules. These limits are designed to provide reasonable protection against harmful interference in a residential installation. This equipment generates, uses and can radiate radio frequency energy and, if not installed and used in accordance with the instructions, may cause harmful interference to radio communications. However, there is no guarantee that interference will not occur in a particular installation. If this equipment does cause harmful interference to radio or television reception, which can be determined by turning the equipment off and on, the user is encouraged to try to correct the interference by one or more of the following measures:

- Reorient or relocate the receiving antenna.
- Increase the separation between the equipment and receiver.
- Connect the equipment into an outlet on a circuit different from that to which the receiver is connected.
- Consult the dealer or an experienced radio/TV technician for help.

Use of Trademarks, Registered Trademarks, and other Protected Names and Symbols

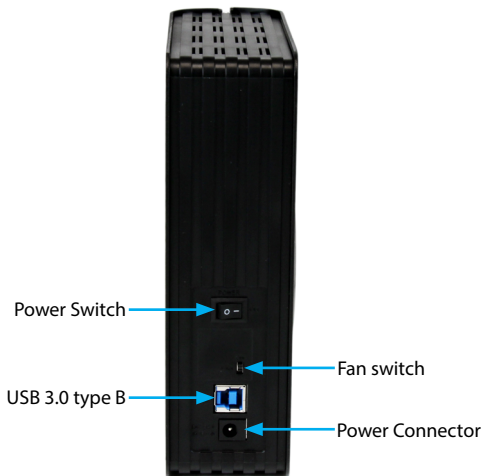
This manual may make reference to trademarks, registered trademarks, and other protected names and/or symbols of third-party companies not related in any way to StarTech.com. Where they occur these references are for illustrative purposes only and do not represent an endorsement of a product or service by StarTech.com, or an endorsement of the product(s) to which this manual applies by the third-party company in question. Regardless of any direct acknowledgement elsewhere in the body of this document, StarTech.com hereby acknowledges that all trademarks, registered trademarks, service marks, and other protected names and/or symbols contained in this manual and related documents are the property of their respective holders.

Table of Contents

Product Overview	1
Rear View.....	1
Side View	1
Introduction	2
Packaging Contents	2
System Requirements.....	2
Hardware Installation	2
How to Use	3
Connecting the Hard Drive.....	3
Disconnecting the Hard Drive	3
Initializing the Hard Drive	4
Specifications.....	6
Technical Support	7
Warranty Information.....	7

Product Overview

Rear View



Side View



Introduction

Packaging Contents

- 1x USB 3.0 SATA 3.5in Hard Drive Enclosure
- 1x Pack of Foam Spacers
- 1x 3ft USB 3.0 Cable
- 1x Universal Power Adapter
- 3x Power Adapter Plug (NA/UK/EU)
- 1x Instruction Manual

System Requirements

- Computer system with available USB 3.0 (5 Gbit/s) port or USB 2.0 port (480Mbps)
- 3.5" SATA Hard Drive (HDD)
- Microsoft® Windows® 2000/XP/Server 2003/Vista/Server 2008 R2/7/8/8.1 (32/64-bit), or Apple® Mac® OS 9.x/10, or Linux®

Hardware Installation

WARNING! Hard drives and storage enclosures require careful handling, especially when being transported. If you are not careful with your hard disk, lost data may result. Always handle your hard drive and storage device with caution. Be sure that you are properly grounded by wearing an anti-static strap when handling computer components or discharge yourself of any static electricity build-up by touching a large grounded metal surface (such as the computer case) for several seconds.

1. Set the enclosure on a flat surface, with the cooling fan facing downwards.
2. On the top panel, remove the two small screws at the corners. Remove the top panel.
3. Located at the opposite end from the internal SATA connectors is a small plastic wedge. Flip the wedge up and out of the enclosure.
4. Place the 3.5" SATA hard drive into the enclosure and then slide it into the SATA connectors.

5. Flip the wedge down again, to secure the hard drive. For thinner hard drives, an optional, thicker foam pad is included.
6. Place the top panel back on to the enclosure and fasten the two corner screws and stand the enclosure back up.
7. Connect the external power adapter to the enclosure and flip the power switch to the "1" position. The enclosure and hard drive will power up.
8. Connect the USB cable from the enclosure to the computer system.

How to Use

Connecting the Hard Drive

Once the enclosure has been attached to a computer, and the OS has installed the necessary software, the drive will be accessible as though it were installed within the system.

Prior to using the drive, it will need to be formatted according to your operating system requirements. To format your newly attached hard drive, or create partitions, please see the Initializing the Hard Drive section.

LED Indicator

The hard drive enclosure offers an LED indicator, to enable you to monitor drive activity. When the enclosure is powered, the LED will illuminate. While the hard drive is being accessed, the LED will blink. Do not remove the enclosure from the host computer while the LED is flashing, as it could damage the drive or the enclosure, resulting in data loss.

Disconnecting the Hard Drive

Windows

1. Select the "Safely remove Hardware and Eject Media" icon, located in the task bar.
2. Select the storage device from the list that appears.
3. Wait for the message indicating that it is now safe to remove the device.

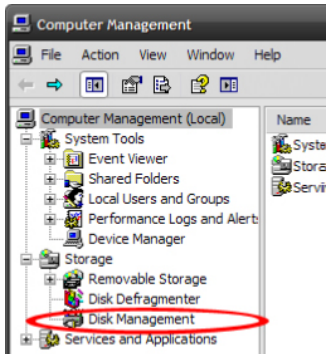
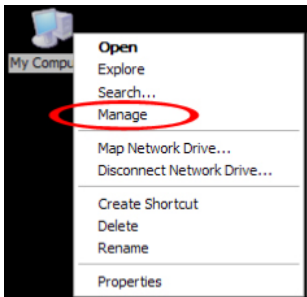
Note: Removing the connected drive prior to receiving notification that it is safe to do so, could result in losing or corrupting data stored on the drive. Once the Safe to Remove Hardware message appears, please disconnect the enclosure from the computer by removing the USB connection.

Mac OS X

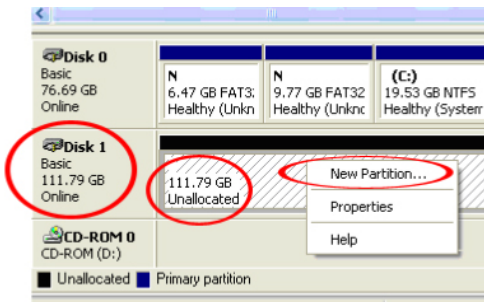
To safely disconnect the attached drive from the host computer, close any windows listing the contents of the removable drive. Once all windows are closed, click on the USB storage icon on the desktop, and drag it to the Trash Can icon on the desktop. Allow 5 seconds before physically removing the enclosure/disk from the computer.

Initializing the Hard Drive

1. If the SATA Hard Drive is blank it may need to be initialized and formatted before use. From the main Windows desktop, right-click on "My Computer" ("Computer" in Vista/ 7 / 8/ 8.1), then select Manage. In the new Computer Management window, select Disk Management from the left window panel.



2. A dialog window should automatically appear, asking you to initialize the drive. Depending on the version of Windows, it will give you the option of either creating an "MBR" or "GPT" disk. GPT (GUID partition) is required for drives larger than 2TB but is not compatible with some older operating systems, while MBR is supported by newer and older operating systems.
3. Once initialized, locate the Disk that says it is "Unallocated" (check the listed hard drive capacity to confirm it's the correct hard drive) and then right-click in the section that says "Unallocated" and select "New Partition".



4. Follow the on screen prompts to initialize the drive in the format of your choice.

Specifications

Host Interface	USB 3.0
External Connectors	1 x USB 3.0 B
Internal Connectors	1 x 15 pin SATA Power female 1 x 7 pin SATA Data male
Maximum Data Transfer Rate	USB 3.0: 5 Gbit/s
Compatible Operating Systems	Windows 2000/XP/Server 2003/Vista/ Server 2008 R2/7/8/8.1 (32/64-bit), Mac OS 9/10, Linux

Technical Support

StarTech.com's lifetime technical support is an integral part of our commitment to provide industry-leading solutions. If you ever need help with your product, visit www.startech.com/support and access our comprehensive selection of online tools, documentation, and downloads.

For the latest drivers/software, please visit www.startech.com/downloads

Warranty Information

This product is backed by a two year warranty.

In addition, StarTech.com warrants its products against defects in materials and workmanship for the periods noted, following the initial date of purchase. During this period, the products may be returned for repair, or replacement with equivalent products at our discretion. The warranty covers parts and labor costs only. StarTech.com does not warrant its products from defects or damages arising from misuse, abuse, alteration, or normal wear and tear.

Limitation of Liability

In no event shall the liability of StarTech.com Ltd. and StarTech.com USA LLP (or their officers, directors, employees or agents) for any damages (whether direct or indirect, special, punitive, incidental, consequential, or otherwise), loss of profits, loss of business, or any pecuniary loss, arising out of or related to the use of the product exceed the actual price paid for the product. Some states do not allow the exclusion or limitation of incidental or consequential damages. If such laws apply, the limitations or exclusions contained in this statement may not apply to you.

Hard-to-find made easy. At StarTech.com, that isn't a slogan. It's a promise.

StarTech.com is your one-stop source for every connectivity part you need. From the latest technology to legacy products — and all the parts that bridge the old and new — we can help you find the parts that connect your solutions.

We make it easy to locate the parts, and we quickly deliver them wherever they need to go. Just talk to one of our tech advisors or visit our website. You'll be connected to the products you need in no time.

Visit www.startech.com for complete information on all StarTech.com products and to access exclusive resources and time-saving tools.

StarTech.com is an ISO 9001 Registered manufacturer of connectivity and technology parts. StarTech.com was founded in 1985 and has operations in the United States, Canada, the United Kingdom and Taiwan servicing a worldwide market.

Free Manuals Download Website

<http://myh66.com>

<http://usermanuals.us>

<http://www.somanuals.com>

<http://www.4manuals.cc>

<http://www.manual-lib.com>

<http://www.404manual.com>

<http://www.luxmanual.com>

<http://aubethermostatmanual.com>

Golf course search by state

<http://golfingnear.com>

Email search by domain

<http://emailbydomain.com>

Auto manuals search

<http://auto.somanuals.com>

TV manuals search

<http://tv.somanuals.com>