

PCI Express to 4 Slot PCI Expansion System

PEX2PCI4



DE: Bedienungsanleitung - de.startech.com

FR: Guide de l'utilisateur - fr.startech.com

ES: Guía del usuario - es.startech.com

IT: Guida per l'uso - it.startech.com

NL: Gebruiksaanwijzing - nl.startech.com

PT: Guia do usuário - pt.startech.com

For the most up-to-date information, please visit: www.startech.com

Download from www.Somanuals.com. All Manuals Search And Download.

Manual Revision: 04/04/2011

FCC Compliance Statement

This equipment has been tested and found to comply with the limits for a Class B digital device, pursuant to part 15 of the FCC Rules. These limits are designed to provide reasonable protection against harmful interference in a residential installation. This equipment generates, uses and can radiate radio frequency energy and, if not installed and used in accordance with the instructions, may cause harmful interference to radio communications. However, there is no guarantee that interference will not occur in a particular installation. If this equipment does cause harmful interference to radio or television reception, which can be determined by turning the equipment off and on, the user is encouraged to try to correct the interference by one or more of the following measures:

Reorient or relocate the receiving antenna.

Increase the separation between the equipment and receiver.

Connect the equipment into an outlet on a circuit different from that to which the receiver is connected.

Consult the dealer or an experienced radio/TV technician for help.

Use of Trademarks, Registered Trademarks, and other Protected Names and Symbols

This manual may make reference to trademarks, registered trademarks, and other protected names and/or symbols of third-party companies not related in any way to StarTech.com. Where they occur these references are for illustrative purposes only and do not represent an endorsement of a product or service by StarTech.com, or an endorsement of the product(s) to which this manual applies by the third-party company in question. Regardless of any direct acknowledgement elsewhere in the body of this document, StarTech.com hereby acknowledges that all trademarks, registered trademarks, service marks, and other protected names and/or symbols contained in this manual and related documents are the property of their respective holders.

Table of Contents

Introduction	1
Features.....	1
Package Contents.....	1
Installation.....	2
Using the PCI Express Adapter (typical)	2
Using the ExpressCard Host Adapter Card	4
Software Installation	5
Specifications.....	6
EC2PCI (optional).....	6
Accessory Products from StarTech.com	7
Technical Support.....	8
Warranty Information.....	8

Introduction

Thank you for purchasing a StarTech.com PCI Express to Four Slot PCI Expansion Bay. This product allows you to add PCI expandability to your computer, using an available PCI Express or ExpressCard* slot, helping to bridge the gap between older PCI expansion cards and motherboards with newer interface capabilities.

Features

- Supports 1x 2.5Gb/s PCI Express Data Transfer Rates
- IPCI Slots are fully PCI Bus Rev. 2.3 Compliant
- Supports both 5V and 3.3V Add-in Cards
- Supports Windows 2000/2003/XP/ 7/Vista™/Mac OS X

Package Contents

- 1 x PCI Expansion Bay
- 1 x PCI Express Host Card
- 1 x Low Profile Bracket
- 1 x Data Transfer Cable
- 1 x Power Adapter
- 1 x Instruction Manual
- 1 x Driver CD
- 1 x Screw Kit

Accessories

*Please note that PEX2PCI4 can be connected to a host computer ExpressCard port, using the EC2PCI ExpressCard to PCI adapter, in place of the PCI Express Card adapter that is packaged with PEX2PCI4.

As such, if you wish to connect to the PEX2PCI4 using an ExpressCard connection, EC2PCI is a required accessory.

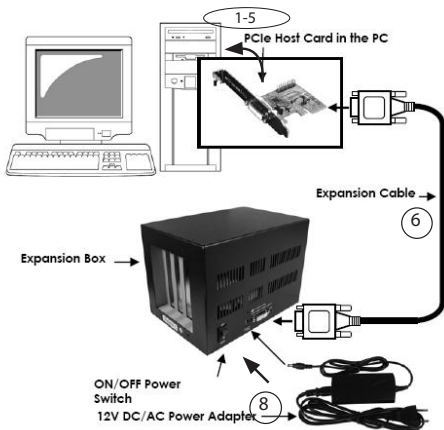
Installation

WARNING: PEX2PCI4 uses a DVI interface to connect the the PCI Express and PCI components. When connecting the PCI expansion board to the PCI Express card, please ensure that the DVI port provided by PEX2PCI4 is not confused with a DVI port provided by the computer video card, as this could damage the video card, as well as the PCI Express expansion card and PCI expansion slot board.

Using the PCI Express Adapter (typical)

The following diagram is a visual depiction of the instructions on the following page, which account for typical installation of the PEX2PCI4 using the (included) PCI Express Adapter Card.

For details on how to install PEX2PCI4 using the optional (not included) ExpressCard adapter in place of the PCI Express adapter, please refer to the the section titled Using the ExpressCard Adapter.



1. Turn OFF the computer power before installation, and remove the chassis cover from the computer. Similarly, ensure the PEX2PCI4 is not powered at this time.

Since both the PC system and the Expansion Box are self-powered, you need to follow the correct ON/OFF sequence as follows:

Power Off Sequence: Power off your PC system, then the Expansion Box

Power On Sequence: Power on the Expansion Box first, then power on your PC system.

2. Locate an unused PCI Express slot and remove the corresponding slot cover from rear panel of the computer chassis. Retain the screw (if applicable) used to hold the slot cover in place.
3. Align the PCI Express card with the unused PCI Express expansion slot. Applying pressure evenly across the top edge of the expansion card, firmly but gently insert the card into the slot, ensuring that the card is properly aligned with the rear panel slot.
4. Secure the card to the motherboard and rear chassis, using the screw removed in step 2.
5. Replace the chassis cover (removed in step 1).
6. Connect the included DVI-like* cable to the DVI-like port provided by the newly installed PCI Express card. Attach the remaining DVI-like connector provided by the cable to the PCI Expansion Bay DVI port.
7. Open the top cover of the PEX2PCI4 Expansion Box by removing the screws.

There are four PCI slots in the Expansion Box. Find an unused slot, remove the "blank" PCI card bracket that was pre-installed from the factory.

Insert the PCI card(s) you wish to install, into the available PCI slots, then replace the top cover of the Expansion Box.

8. Connect the AC Power Adapter to the power port (situated to the left of the DVI-like input) on the rear panel of the PEX2PCI4 main unit.
9. Turn on the Expansion Box power using the power switch next to the Expansion Cable, then power on the PC system.
10. Once the Expansion Box has successfully been connected to the host computer, proceed to the section titled **Software Installation**.

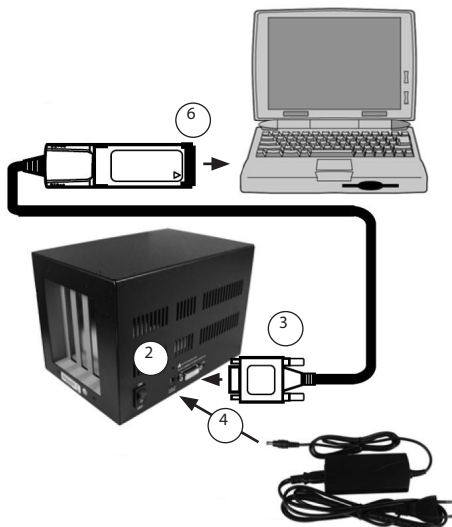
Using the ExpressCard Host Adapter Card

The following diagram is a visual depiction of the instructions on the following page, which account for installation of the PEX2PCI4 using the (accessory) EC2PCI ExpressCard Adapter (must be purchased separately).

1. Turn OFF the computer power before installation. Since both the PC system and the Expansion Box are self-powered, you need to follow the correct ON/OFF sequence as follows:

Power Off Sequence: Power off your PC system, then the Expansion Box

Power On Sequence: Power on the Expansion Box first, then power on your PC system.



2. Open the top cover of the PEX2PCI4 Expansion Box by removing the screws.

There are four PCI slots in the Expansion Box. Find an unused slot, remove the "blank" PCI card bracket that was pre-installed from the factory.

Insert the PCI card(s) you wish to install, into the available PCI slots, then replace the top cover of the Expansion Box.

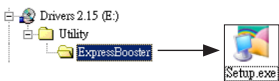
3. Connect the DVI-like* connector on the EC2PCI ExpressCard Host Adapter Card to the DVI-like port on the rear panel of the PEX2PCI4 Expansion Box.
4. Connect the AC Power Adapter to the power port (situated to the left of the DVI-like input) on the rear panel of the PEX2PCI4 main unit.
5. Turn on the Expansion Box power using the power switch next to the Expansion Cable, then power on the PC system
6. Connect the remaining end of the EC2PCI ExpressCard Host Adapter Card into the unused ExpressCard expansion slot of the host computer, then power on the host computer.

Software Installation

If you find the write performance of your PCI Card is not as desired, please install the ExpressBooster software supplied with your card.

***NOTE:** When performing this step, please ensure that the DVI port provided by the PCI Express expansion card is **not** confused with a DVI port provided by the computer video card, as this could damage the video card, as well as the PCI Express expansion card and PCI expansion slot board.

1. Locate the **Setup.exe** file found on the driver CD. Assuming that E: is the designation for your CD/DVD-ROM drive, double-click on **E:\Utility\ExpressBooster** to launch the setup program.



2. Follow the setup on-screen instructions; ensure that there is a checkmark next to PCI Express Card for Desktops/Servers only (leave the "ExpressCard" item un-checked). Proceed with any further on-screen instructions to complete the installation.



System requirements

Bus Type	PCI
Connectors	PCI Expansion Box: 1 x DVI D (dual link) Female Connector PCI Express Card: 1 x DVI D (dual link) female connector
Form Factor	PCI Express (x1)
Power Adapter	1 x 12V DC, 3 Amp
OS Support	Windows 2000/2003/XP/ Vista/7/ Mac OS X
Regulatory Certifications	CE, FCC, ROHS

EC2PCI (optional)

Bus Type	ExpressCard
Connectors	1x DVI D Male Connector 1x ExpressCard Connector
OS Support	Windows 2000/XP/2003/Vista/ Mac OS X and up
Regulatory Certifications	CE, FCC, ROHS

Technical Support

StarTech.com's lifetime technical support is an integral part of our commitment to provide industry-leading solutions. If you ever need help with your product, visit www.startech.com/support and access our comprehensive selection of online tools, documentation, and downloads.

Warranty Information

This product is backed by a two year warranty.

In addition, StarTech.com warrants its products against defects in materials and workmanship for the periods noted, following the initial date of purchase. During this period, the products may be returned for repair, or replacement with equivalent products at our discretion. The warranty covers parts and labor costs only. StarTech.com does not warrant its products from defects or damages arising from misuse, abuse, alteration, or normal wear and tear.

Limitation of Liability

In no event shall the liability of StarTech.com Ltd. and StarTech.com USA LLP (or their officers, directors, employees or agents) for any damages (whether direct or indirect, special, punitive, incidental, consequential, or otherwise), loss of profits, loss of business, or any pecuniary loss, arising out of or related to the use of the product exceed the actual price paid for the product. Some states do not allow the exclusion or limitation of incidental or consequential damages. If such laws apply, the limitations or exclusions contained in this statement may not apply to you.

StarTech.com

Hard-to-find **made easy**®

Hard-to-find made easy. At StarTech.com, that isn't a slogan. It's a promise.

StarTech.com is your one-stop source for every connectivity part you need. From the latest technology to legacy products — and all the parts that bridge the old and new — we can help you find the parts that connect your solutions.

We make it easy to locate the parts, and we quickly deliver them wherever they need to go. Just talk to one of our tech advisors or visit our website. You'll be connected to the products you need in no time.

Visit **www.startech.com** for complete information on all StarTech.com products and to access exclusive resources and time-saving tools.

StarTech.com is an ISO 9001 Registered manufacturer of connectivity and technology parts. StarTech.com was founded in 1985 and has operations in the United States, Canada, the United Kingdom and Taiwan servicing a worldwide market.

Download from [Www.Somanuals.com](http://www.Somanuals.com). All Manuals Search And Download.

Free Manuals Download Website

<http://myh66.com>

<http://usermanuals.us>

<http://www.somanuals.com>

<http://www.4manuals.cc>

<http://www.manual-lib.com>

<http://www.404manual.com>

<http://www.luxmanual.com>

<http://aubethermostatmanual.com>

Golf course search by state

<http://golfingnear.com>

Email search by domain

<http://emailbydomain.com>

Auto manuals search

<http://auto.somanuals.com>

TV manuals search

<http://tv.somanuals.com>