

4 Bay eSATA/USB 2.0/3.0 to 2.5in/3.5in SATA HDD Docking Station

SATDOCK4U2E

SATDOCK4U3E



*SATDOCK4U3E shown

DE: Bedienungsanleitung - de.startech.com

FR: Guide de l'utilisateur - fr.startech.com

ES: Guía del usuario - es.startech.com

IT: Guida per l'uso - it.startech.com

NL: Gebruiksaanwijzing - nl.startech.com

PT: Guia do usuário - pt.startech.com

For the most up-to-date information, please visit: www.startech.com

Manual Revision: 08/25/2011

FCC Compliance Statement

This equipment has been tested and found to comply with the limits for a Class B digital device, pursuant to part 15 of the FCC Rules. These limits are designed to provide reasonable protection against harmful interference in a residential installation. This equipment generates, uses and can radiate radio frequency energy and, if not installed and used in accordance with the instructions, may cause harmful interference to radio communications. However, there is no guarantee that interference will not occur in a particular installation. If this equipment does cause harmful interference to radio or television reception, which can be determined by turning the equipment off and on, the user is encouraged to try to correct the interference by one or more of the following measures:

Reorient or relocate the receiving antenna.

Increase the separation between the equipment and receiver.

Connect the equipment into an outlet on a circuit different from that to which the receiver is connected.

Consult the dealer or an experienced radio/TV technician for help.

Use of Trademarks, Registered Trademarks, and other Protected Names and Symbols

This manual may make reference to trademarks, registered trademarks, and other protected names and/or symbols of third-party companies not related in any way to StarTech.com. Where they occur these references are for illustrative purposes only and do not represent an endorsement of a product or service by StarTech.com, or an endorsement of the product(s) to which this manual applies by the third-party company in question. Regardless of any direct acknowledgement elsewhere in the body of this document, StarTech.com hereby acknowledges that all trademarks, registered trademarks, service marks, and other protected names and/or symbols contained in this manual and related documents are the property of their respective holders.

Table of Contents

Introduction.....	1
Packaging Contents.....	1
System Requirements.....	1
SATDOCK4U2E - Top View.....	2
SATDOCK4U2E - Rear View.....	2
SATDOCK4U3E - Top View.....	3
SATDOCK4U3E - Rear View.....	3
Installation.....	4
Hardware Installation.....	4
Driver Installation.....	4
Using the Storage Device.....	5
Specifications.....	7
Technical Support.....	8
Warranty Information.....	8



SATDOCK4U3E: Pressing the power button to turn off a hard drive will momentarily restart the other drive bays. Ensure the other drives are not being accessed when powering off any of the drives.

Introduction

The SATDOCK4U2E and SATDOCK4U3E Quad SATA Docking Stations for 2.5in and 3.5in hard drives (HDD) and solid state drives (SSD) allows for up to four drives to be conveniently and quickly accessed from a single device.

The SATDOCK4U2E allows four SATA drives to be paired and connected over USB 2.0, with data transfer rates up to 480Mbps, with two USB connections or each drive can be connected individually over a dedicated eSATA connection at up to 3Gbps, allowing for multiple computers to simultaneously interface with a single docking station to access only a specific drive(s).

The SATDOCK4U3E features SuperSpeed USB 3.0 connectivity (also compatible with USB 2.0) with data transfer rates up to 5Gbps (10x faster than USB 2.0) or eSATA with Port Multiplier connectivity up to 3Gbps. This docking station provides fast connectivity to all 4 drives simultaneously from a single connection.

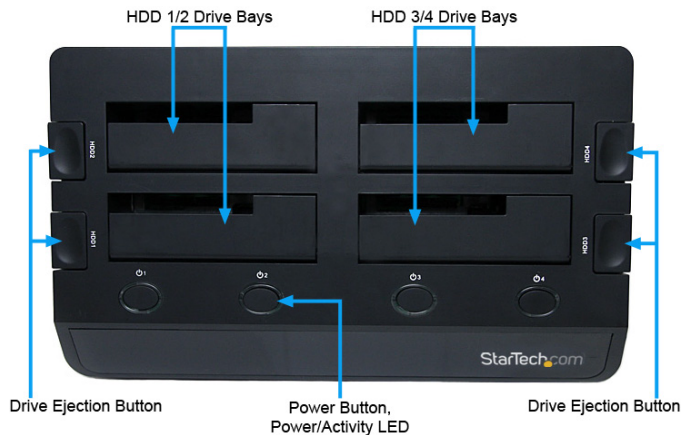
Packaging Contents

SATDOCK4U2E	SATDOCK4U3E
1 x 4-Bay SATA Docking Station	1 x 4-Bay SATA Docking Station
2 x USB 2.0 cable	1 x USB 3.0 cable
4 x eSATA cable	1 x eSATA cable
1 x Universal Power Adapter	1 x Universal Power Adapter
3 x Power Cord (NA/UK/EU)	3 x Power Cord (NA/UK/EU)
1 x Instruction Manual	1 x Instruction Manual

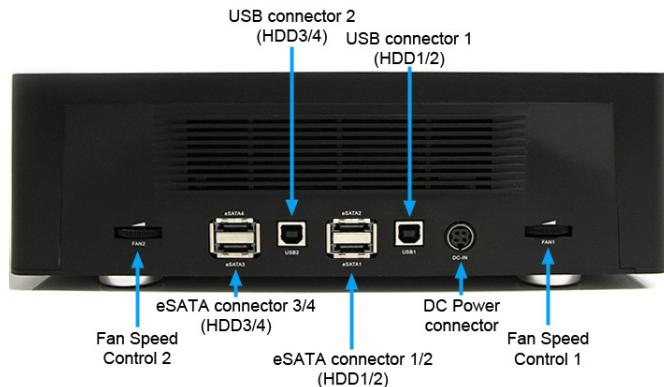
System Requirements

- Available USB and/or eSATA* port(s) on computer system
*eSATA port requires Port Multiplier support for SATDOCK4U3E
- Available AC power outlet
- Windows 2000/ XP(32/64-bit)/ Server 2003(32/64-bit)/ Vista(32/64-bit)/ 7(32/64-bit)/ Server 2008 R2, Mac OS X, and Linux

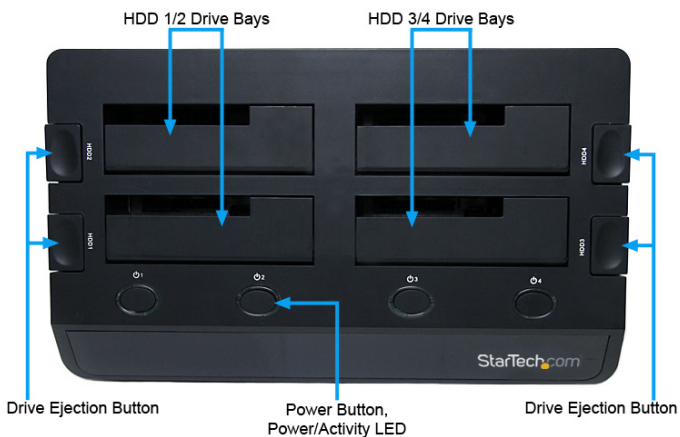
SATDOCK4U2E - Top View



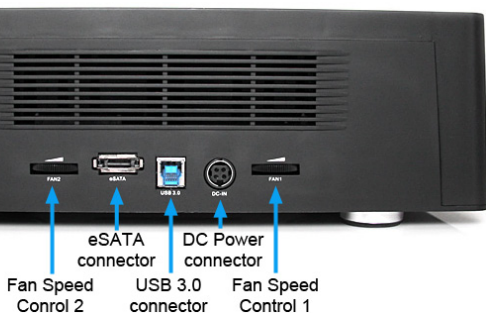
SATDOCK4U2E - Rear View



SATDOCK4U3E - Top View



SATDOCK4U3E - Rear View



Installation

WARNING! Hard drives require careful handling, especially when being transported. If you are not careful, lost data may result. Always handle hard drives and storage devices with caution.

Hardware Installation

1. Connect the external power adapter from the hard drive docking station to an AC power outlet.
2. Insert 2.5" or 3.5" hard drive(s) into the top loading slot(s). Make sure that the connectors on the hard drive are facing the same corner of the slot that has a cutout in the door. The label on the hard drive should face the front of the SATA docking station.
3. **SATDOCK4U2E:** Connect the HDD1/2 bays using either a single USB cable (USB1) or separate eSATA cables (eSATA1/2) to a computer(s). Connect the HDD3/4 bays using either a single USB cable (USB2) or separate eSATA cables (eSATA3/4) to the same or different computer(s).

SATDOCK4U3E: Connect the included USB cable or eSATA cable from the hard drive docking station to an available USB or eSATA port on the computer system. The computer can be on or off.

NOTE: If using eSATA, please note that the eSATA port on the host computer system **must provide** Port Multiplier support. If the eSATA port does not offer Port Multiplier support, only one of the installed SATA drives will be accessible.

4. Press the power buttons on the top of the hard drive docking station for each of the bays that contain a hard drive. The Power LED around the power buttons should light up.
5. To remove the hard drive, make sure it is currently not being accessed by the computer and the Activity LED is not flashing, then unmount or uninstall the disk drive from the operating system (see documentation for your operating system). Press the appropriate power button to turn off the hard drive and wait for the drive to power down. Press the drive ejection button on the top of the hard drive dock to release the drive, then pull the drive from the slot.

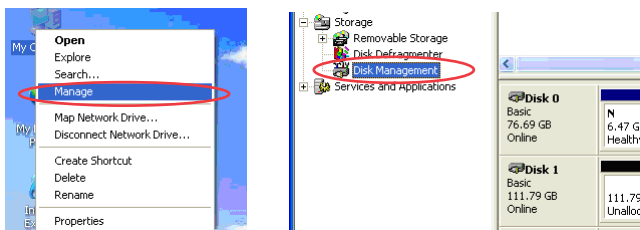
Driver Installation

No driver installation is required for the supported operating systems, as this hard drive dock is natively supported, so the drivers are already installed.

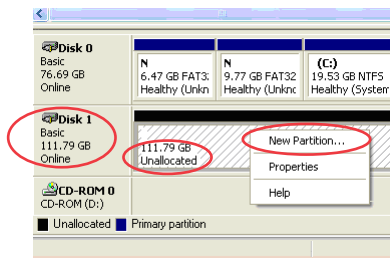
Using the Storage Device

Windows 2000/XP/Vista/7

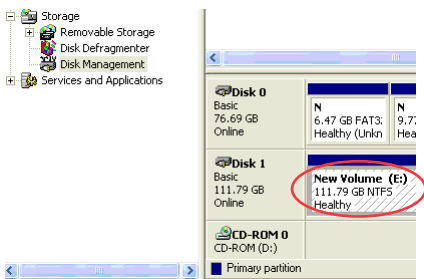
If you are using a brand new hard drive that does not contain any data, then you will first need to prepare the hard drive for use. From the main desktop, right-click on "My Computer" ("Computer" in Vista/7), then select Manage. In the new Computer Management window, select Disk Management from the left window panel.



Locate the Disk that says it is "Unallocated" (check hard drive capacity to confirm it's the correct hard drive) and then right-click in the section that says "Unallocated" and select "New Partition".



The New Partition Wizard will appear. Follow the instructions in the wizard to complete setting up the drive. Once complete, the Disk should show up as "Healthy" with a drive letter assigned (i.e. E:). This drive letter should now appear within My Computer.



If you are installing a hard drive that already has data on it, then after plugging it in, the drive should automatically show up with a drive letter assigned within My Computer.

Specifications

	SATDOCK4U2E	SATDOCK4U3E
Number of Drives	4	
Bus Interface	USB 2.0 SATA revision 2.x	USB 3.0 SATA revision 2.x
Chipset ID	Initio INIC1610P	JMicron JM321 + JM539
External Connectors	2 x USB type A female 4 x eSATA female	1 x USB 3.0 type B female 1 x eSATA female
LEDs	4 x Drive Power 4 x Drive Activity	
Fans	2 x 60mm	
Maximum Data Transfer Rate	USB 2.0: 480Mbps eSATA: 3Gbps	USB 3.0: 5Gbps eSATA: 3Gbps
Hard Drive Compatibility	2.5"/3.5" SATA 1.5/3.0/6.0 Gbps compatible drives, tested up to 2.0TB in capacity	
Insertion Rating	15,000 cycles	
Power Adapter	12VDC, 6500mA	
Operating Temperature	5°C ~ 80°C (41°F ~ 176°F)	
Storage Temperature	-40°C ~ 70°C (-40°F ~ 158°F)	
Humidity	8% ~ 90% RH	
Dimensions	290.5mm x 172.7mm x 94.7mm	
Weight	1054g	1020g
Compatible Operating Systems	Windows 2000/ XP(32/64-bit)/ Server 2003(32/64-bit)/ Vista(32/64-bit)/ 7(32/64-bit)/ Server 2008 R2, Mac OS X, and Linux	

Technical Support

StarTech.com's lifetime technical support is an integral part of our commitment to provide industry-leading solutions. If you ever need help with your product, visit www.startech.com/ support and access our comprehensive selection of online tools, documentation, and downloads.

Warranty Information

This product is backed by a two year warranty.

In addition, StarTech.com warrants its products against defects in materials and workmanship for the periods noted, following the initial date of purchase. During this period, the products may be returned for repair, or replacement with equivalent products at our discretion. The warranty covers parts and labor costs only. StarTech.com does not warrant its products from defects or damages arising from misuse, abuse, alteration, or normal wear and tear.

Limitation of Liability

In no event shall the liability of StarTech.com Ltd. and StarTech.com USA LLP (or their officers, directors, employees or agents) for any damages (whether direct or indirect, special, punitive, incidental, consequential, or otherwise), loss of profits, loss of business, or any pecuniary loss, arising out of or related to the use of the product exceed the actual price paid for the product. Some states do not allow the exclusion or limitation of incidental or consequential damages. If such laws apply, the limitations or exclusions contained in this statement may not apply to you.



Hard-to-find made easy. At StarTech.com, that isn't a slogan. It's a promise.

StarTech.com is your one-stop source for every connectivity part you need. From the latest technology to legacy products — and all the parts that bridge the old and new — we can help you find the parts that connect your solutions.

We make it easy to locate the parts, and we quickly deliver them wherever they need to go. Just talk to one of our tech advisors or visit our website. You'll be connected to the products you need in no time.

Visit **www.startech.com** for complete information on all StarTech.com products and to access exclusive resources and time-saving tools.

StarTech.com is an ISO 9001 Registered manufacturer of connectivity and technology parts. StarTech.com was founded in 1985 and has operations in the United States, Canada, the United Kingdom and Taiwan servicing a worldwide market.

Free Manuals Download Website

<http://myh66.com>

<http://usermanuals.us>

<http://www.somanuals.com>

<http://www.4manuals.cc>

<http://www.manual-lib.com>

<http://www.404manual.com>

<http://www.luxmanual.com>

<http://aubethermostatmanual.com>

Golf course search by state

<http://golfingnear.com>

Email search by domain

<http://emailbydomain.com>

Auto manuals search

<http://auto.somanuals.com>

TV manuals search

<http://tv.somanuals.com>