

Wireless Display Adapter for Mobile Devices

WIFI2HDMC / WIFI2HDMCGE



*actual product may vary from photos

DE: Bedienungsanleitung - de.startech.com

FR: Guide de l'utilisateur - fr.startech.com

ES: Guía del usuario - es.startech.com

IT: Guida per l'uso - it.startech.com

NL: Gebruiksaanwijzing - nl.startech.com

PT: Guia do usuário - pt.startech.com

For the most up-to-date information, please visit: www.startech.com

Manual Revision: 12/11/2013

Download from Www.Somanuals.com. All Manuals Search And Download.

FCC Compliance Statement

This equipment has been tested and found to comply with the limits for a Class B digital device, pursuant to part 15 of the FCC Rules. These limits are designed to provide reasonable protection against harmful interference in a residential installation. This equipment generates, uses and can radiate radio frequency energy and, if not installed and used in accordance with the instructions, may cause harmful interference to radio communications. However, there is no guarantee that interference will not occur in a particular installation. If this equipment does cause harmful interference to radio or television reception, which can be determined by turning the equipment off and on, the user is encouraged to try to correct the interference by one or more of the following measures:

- Reorient or relocate the receiving antenna.
- Increase the separation between the equipment and receiver.
- Connect the equipment into an outlet on a circuit different from that to which the receiver is connected.
- Consult the dealer or an experienced radio/TV technician for help.

Use of Trademarks, Registered Trademarks, and other Protected Names and Symbols

This manual may make reference to trademarks, registered trademarks, and other protected names and/or symbols of third-party companies not related in any way to StarTech.com. Where they occur these references are for illustrative purposes only and do not represent an endorsement of a product or service by StarTech.com, or an endorsement of the product(s) to which this manual applies by the third-party company in question. Regardless of any direct acknowledgement elsewhere in the body of this document, StarTech.com hereby acknowledges that all trademarks, registered trademarks, service marks, and other protected names and/or symbols contained in this manual and related documents are the property of their respective holders.

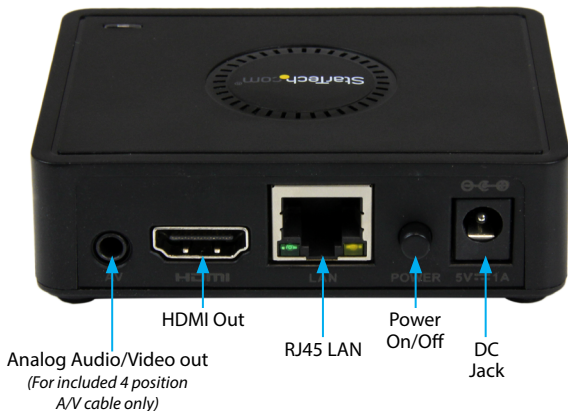
Table of Contents

Product Diagram	1
Rear View	1
Side View	1
Introduction	2
Packaging Contents	2
System Requirements.....	2
Preparing Your Site	2
Initial Setup.....	4
Playing Media from a USB Stick.....	6
AirFun Utility.....	7
Installation.....	7
Operation.....	8
ScreenShare Mode	11
Installation.....	11
Operation.....	13
Wifi Direct – Miracast mode.....	17
Android Wireless Display (Android 4.2 or higher)	18
AllShareCast (Samsung).....	19
Intel WiDi Application.....	20
Windows 8.1 Wireless Display.....	21
Advanced Setup Menu	22

Specifications.....	28
Technical Support	29
Warranty Information.....	29

Product Diagram

Rear View



Side View



Introduction

Packaging Contents

- 1x Wireless Display Adapter
- 1x Universal Power Adapter (NA/UK/EU)
- 1x USB Cable to Power Adapter Port (optional for USB Power source)
- 1x 4 position A/V cable
- 1x Software Installation Disc
- 1x Quick Installation Guide

System Requirements

- HDMI enabled display device (i.e. television, projector)
- 802.11n/g Wireless enabled video source device (i.e. Smartphone, computer)
- HDMI cable
- Available AC electrical outlet or USB power source

Preparing Your Site

1. Determine where the display will be located and place/ mount the display appropriately.

NOTE: *The maximum distance of the display adapter is limited to the distance of your 802.11n/g Wireless network device. If the wireless signal is obstructed by walls, or other interference the signal quality and maximum distance will likely be reduced.*

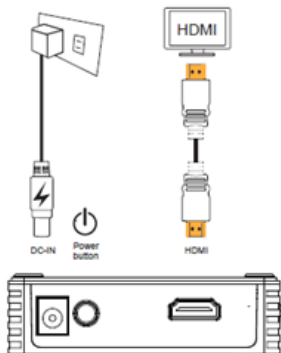
Ensure the Receiver Unit is situated near an available AC electrical outlet.

Hardware Installation

1. Connect an HDMI video cable from the HDMI out port on the Wireless Video Adapter to the HDMI in port on the HDMI enabled display device.
2. Connect the power adapter from an available AC outlet to the power adapter port on the Wireless Video Adapter.

or

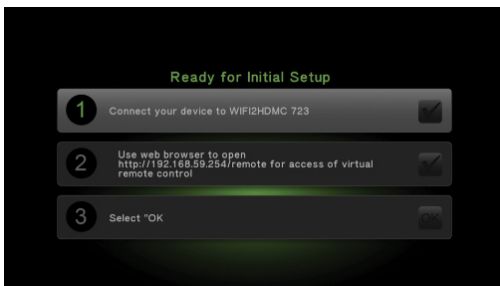
Connect the USB to power cable from an available USB power source to the power adapter port on the Wireless Video Adapter.



3. Press the Power button to the in position to turn on the device, the Power LED will be activated.
4. **(Optional)** If you intend to use the device for Screen sharing over a wired LAN Network, connect an Ethernet cable from the RJ45 LAN port on the Rear of the WIFI2HDMC, to an available LAN port on your local network gateway device (router/hub).
5. **(Optional)** If you intend to output to an analog audio or video source, connect the included "4 Position A/V cable" from the Analog Audio/Video out port to Component video/RCA Audio input source on your analog audio or video device.
Note: Analog output will only work with the included 4 Position A/V cable. Analog Audio/Video is not supported in Miracast mode.

Initial Setup

Once the WIFI2HDMC device is connected to your TV and powered on, the following screen will show on the display.

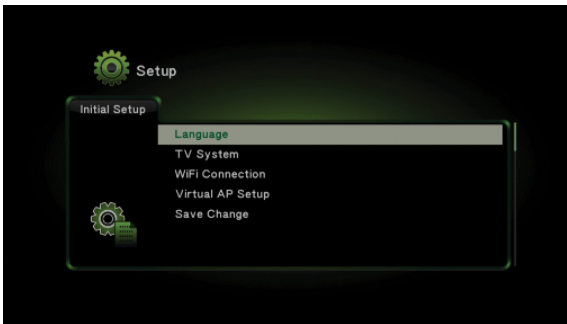


1. Connect your Smartphone / Tablet or Notebook to the SSID of the device. By default the SSID for the device is "WIFI2HDMC xxx" with no security key.
2. Once you have connected to the device, open your web browser and enter the Setup IP address listed on the display which will bring up the remote control interface. The default is <http://192.168.59.254/remote>



3. Select OK on the remote interface.

4. From the Initial Setup menu, modify the following options to suit your application.



Language: Select your desired language for the interface.

TV System: Configure WIFI2HDMC to use a specific resolution if needed. Note: It is recommended to leave this option as HDMI Auto

WiFi Connection (optional): You may want to connect the device to your WiFi network for one of the following reasons.

- a. Create a network bridge. When your mobile device is connected to the WIFI2HDMC SSID directly, this option enables you to still browse the internet or access your LAN, through the WIFI2HDMC device.
- b. Enable the WIFI2HDMC to access DLNA servers on your network.
- c. Access the WIFI2HDMC remote interface from your LAN instead of a direct connection to WIFI2HDMC SSID.

Virtual AP Bridge: Select one of the following options.

- a. Bridge to Wireless – This will bridge the WIFI2HDMC network with your wireless LAN so that you can access the internet or LAN devices through the WIFI2HDMC.
- b. Bridge to Ethernet– This will bridge the WIFI2HDMC network with your wired LAN so that you can access the internet or LAN devices through the WIFI2HDMC.
- c. Virtual AP only – Devices connected to the WIFI2HDMC network can only access the WIFI2HDMC device.

Save Change: Saves all changes.

5. Once complete, you should see the following screen to indicate the device is ready to stream media.



Playing Media from a USB Stick

1. Connect your Smartphone / Tablet or Notebook to the WIFI2HDMC device and navigate to the Setup (remote) page using a web browser.
2. Plug your USB stick into the port located on the side of the WIFI2HDMC device.



3. Navigate the USB stick contents using the web remote to choose the video, music or picture file you would like to view.

AirFun Utility

Installation

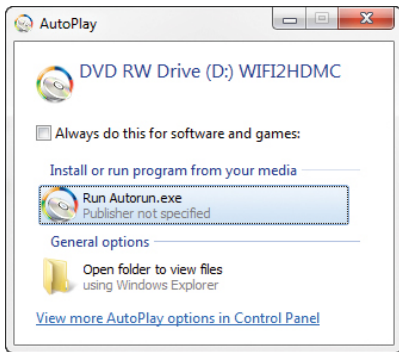
The AirFun utility is available for PC (on the included software CD), iPhone or Android platforms.

Android / iPhone

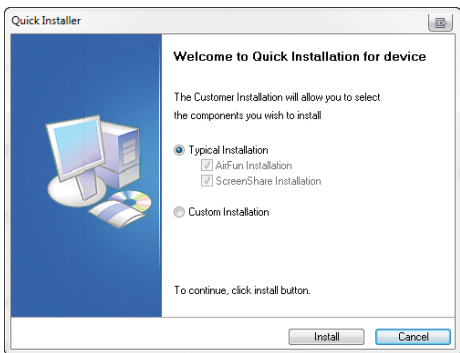
1. Download and install the latest version of the AirFun utility from your mobile app store

PC

1. Insert the included software CD into the computer's CD/DVD drive, or download the latest drivers from <http://www.starTech.com>.
2. Run the **Autorun.exe** application from the Autoplay menu. If Autoplay is disabled on your system, browse to your CD/DVD drive and run the application.



3. Select **Software Installation** from the menu.
4. Choose **Typical Installation** from the following screen and click Install.
Note: This will install both the AirFun and the ScreenShare utilities (outlined later in this manual). Should you only desire to install only the AirFun utility, choose Custom Installation and de-select Screenshare.



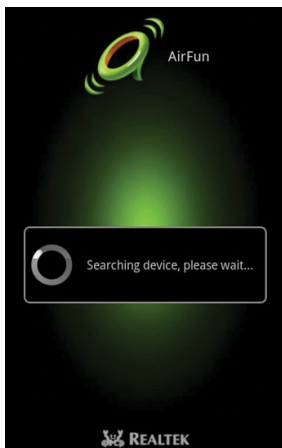
5. Follow the on screen instructions to complete the installation(s).

Operation

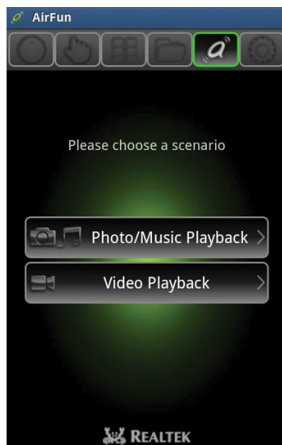
Note: AirFun is one example of a utility that functions with the device; WIFI2HDMC is designed to work with any DLNA/UPnP software (e.g. BubbleUPnP, Windows Media Player 11+, etc.).

Android / iPhone

1. Open the AirFun app and it will begin to search for the WIFI2HDMC device.

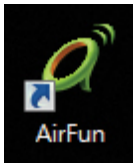


2. Once found, tap the buttons for either **Photo/Music Playback** or **Video Playback** and choose the file you wish to view / play.

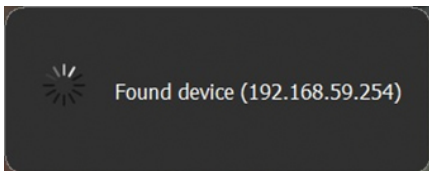


PC

1. Double-click the AirFun icon from your Desktop or Start Menu.



2. The AIRFUN utility will begin to search for the WIFI2HDMC device. If the device is not found before the timeout period, it will display "No device found".



3. If successfully connected, you should be able to see your PC screen on the TV.



4. Drag the video/photo/music file to the Airfun main menu directly. For video files, please drag files to the right folder marked **Video Playback**.



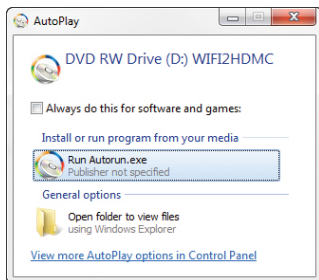
5. For photo/music files, please drag files to the left folder marked **Photo/Music Playback**.



ScreenShare Mode

Installation

1. Insert the included software CD into the computer's CD/DVD drive.
2. Run the **Autorun.exe** application from the Autoplay menu. If Autoplay is disabled on your system, browse to your CD/DVD drive and run the application.

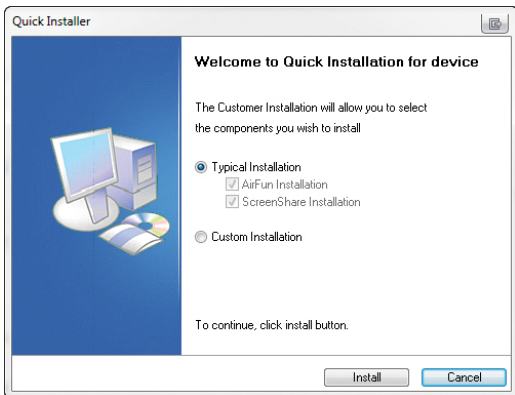


3. On your Notebook / PC, search and connect to the WIFI2HDMC's SSID in list if you intend to connect directly to the device.

or

If the device has been paired with your local WIFI/Wired Network, ensure that your computer has been connected to that specific network gateway. (Contact your network administrator for assistance)

4. Choose **Typical Installation** from the following screen and click **Install**.
Note: This will install both the AirFun and the ScreenShare utilities (outlined later in this manual). Should you only desire to install only the ScreenShare utility, choose **Custom Installation** and de-select AirFun.



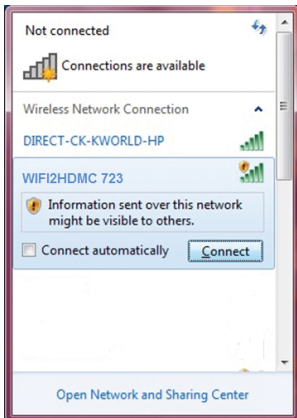
5. Follow the on screen instructions to complete the installation(s).

Operation

1. Switch the WIFI2HDMC device into ScreenShare mode by pressing the Mode Select Button twice (located next to the USB connector).
2. The following screen will display on the TV, note the Login Code displayed in the top right corner of the screen.



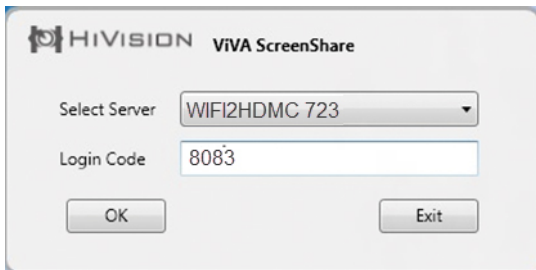
3. On your Notebook / PC, search and connect to the device's SSID in wifi list.



4. Double-click the ScreenShare icon from your Desktop or Start Menu.




5. ScreenShare will auto detect the WIFI2HDMC device, please input login code as noted from instruction page (Step 2), then click **OK**.



6. If login code is correct, application software will appear.

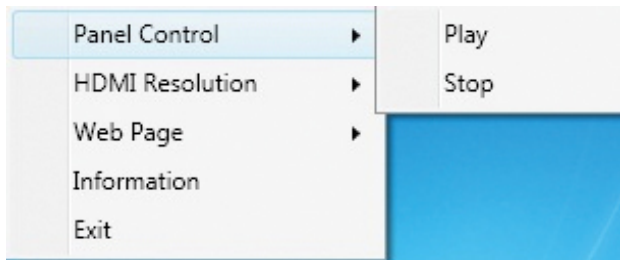


#	Name	Function Description
1	Play	Start / pause presentation. When pausing a progressing presentation, the displayed image will freeze; press play button again to resume. 
2	Stop	Stop a presentation and go back to the instruction page.
3	Mute	Mute volume.
4	Volume up/ down	Volume up/down.
5	Minimize/ Close	Minimize and close the Application Software window.
6	Information	Show the application information.
7	Menu	Show the application information.

Menu Options

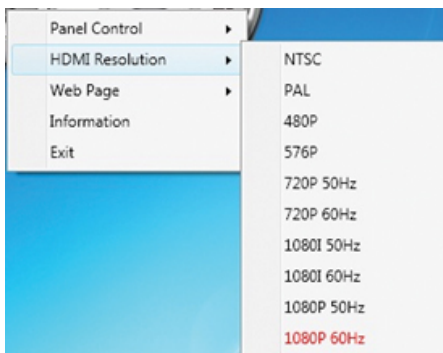


Panel Control

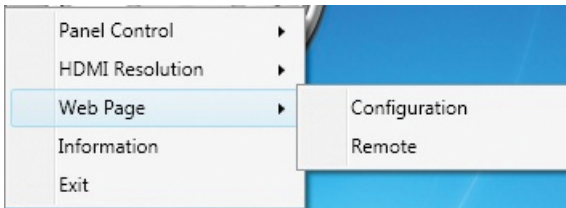


#	Name	Function Description
1	Play	Star/Pauses presentation
2	Stop	Stop presentation

HDMI Resolution



Web Page



Information

For more information, please check 3-2 Information.

Exit

Exit from ScreenShare application and go back to the instruction page.

Wifi Direct – Miracast mode

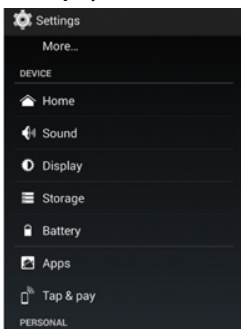
NOTE: Exact steps regarding Miracast setup will vary from device to device. Please review the documentation included with your SmartPhone or tablet for steps specific instructions. The following sections will indicate a few examples of how to connect in this mode.

1. Press the Mode button on the Wireless Video Adapter repeatedly until you see the Wi-Fi Miracast screen shown on your display.

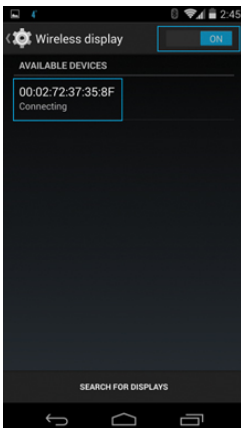


Android Wireless Display (Android 4.2 or higher)

1. Open the **Settings** menu.
2. Select **Display**, then **Wireless Display**



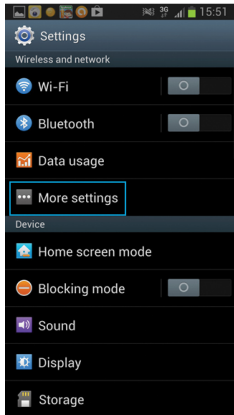
3. Turn Wireless Display **ON** and select the Available Device from the list. By default the Wireless Video device will be listed as the MAC address shown on the HDMI display. Tap this device to connect. The device should connect after a few seconds.



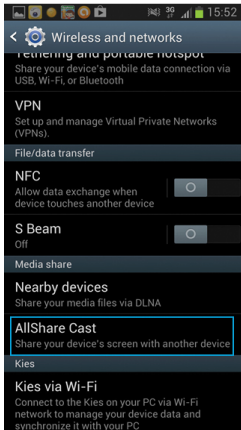
Note: Analog Audio/Video not supported in Miracast mode.

AllShareCast (Samsung)

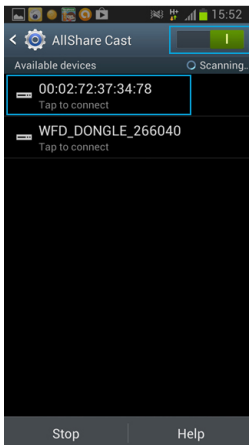
1. Open your mobile **Settings** page.
2. Select **More Settings**.



3. Scroll through the list and select **AllShare Cast**.



- Turn AllShare Cast **ON** and select the Available Device from the list. By default the Wireless Video device will be listed as the MAC address shown on the HDMI display. Tap this device to connect. The device should connect after a few seconds.



Intel WiDi Application

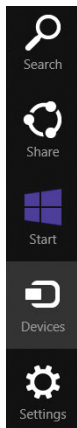
- Open the WiDi software included with your Wi-Di enabled computer system.
- The adapter will be listed under detected adapters, select the adapter and click **Connect**.



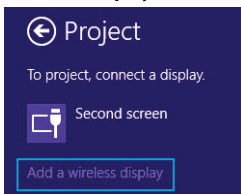
- Your computer screen will now be shared wirelessly on the display.

Windows 8.1 Wireless Display

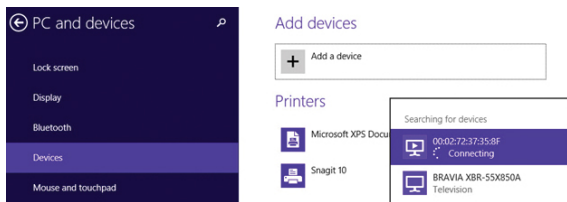
1. Launch the charm window and select **Devices** (or search for **Device Settings** from Metro).



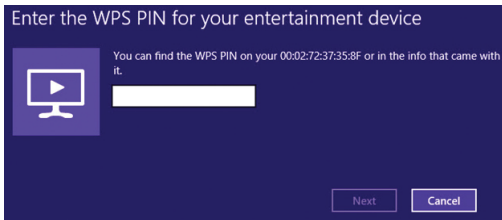
2. Select **Project**, then **Add a wireless display** (or Add a Device).



3. Select the WIFI2HDMC from the list of devices (the MAC address will be listed).



4. Enter the PIN code on the WIFI2HDMC screen, then click **Next**.



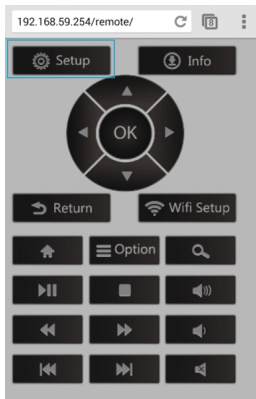
5. The device should connect after a few seconds.

Note: Some Windows 8.1 machines may have problems connecting in Miracast mode. Please ensure you are using the latest Graphics drivers and Wireless drivers for your computer. Contact your manufacturer for support.

Advanced Setup Menu

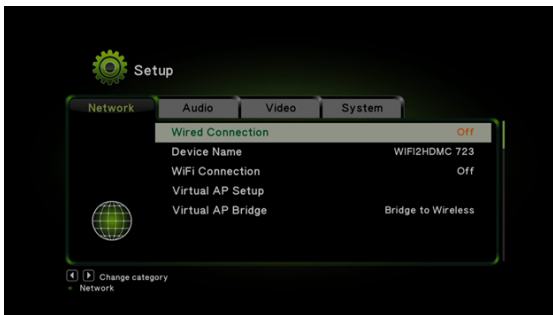
To access the advanced setup menu for WIFI2HDMC, type the address on the TV screen with a web browser of a PC / Notebook / Smartphone or Tablet connected to WIFI2HDMC to enter the virtual remote page, and click the Setup button.

Once on the setup page, Use the Left/Right navigation arrows on the virtual remote and select OK to enter the desired settings page for Network / Audio / Video / System. Use the Return button to go to the previous page or standby screen.





Network



Wired Connection

Item	Description
Obtain an IP address Automatically	WIFI2HDMC will obtain an IP address from DHCP server automatically.
Set WIFI2HDMC IP address manually	Set WIFI2HDMC IP address manually. Fill the fields below to setup your desired IP address.
DNS Server	Please input the IP address of the DNS (Domain Name Service) server.

Device Name

Item	Description
Device Name (SSID)	Input the Device Name of presentation gateway here. Default is "WIFI2HDMC".

WiFi Connection

Click WiFi connection button to display a list of available Wireless APs on the screen, and choose the AP you wish to connect to. This will bridge WIFI2HDMC to the Internet via another Wireless AP.



Virtual AP Setup

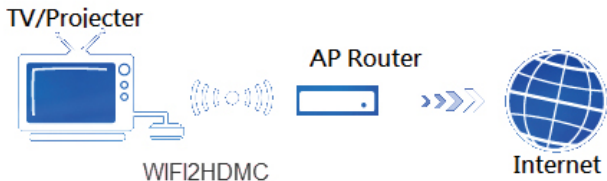
Item	Description
Radio Band	Set the Radio band to 2.4GHz or 5GHz. Note: Please confirm that your PC/Notebook supports 5GHz operation before you set the radio band to 5GHz.
Security	Encryption: Disabled - Disables wireless encryption. Encryption: WPA +WPA2 - Enable WPA + WPA2 encryption. Wireless clients must support WPA encryption and know the encryption passphrase you set here.
Region	Choose your region.
Save Change	Save the configuration.

Virtual AP Bridge

Item	Description
Virtual AP only	Ad-hoc mode
Bridge to Wireless	Connect to Internet via Wireless AP router (outlined below)
Bridge to Ethernet	Connect to Internet via Wired AP router (outlined below)

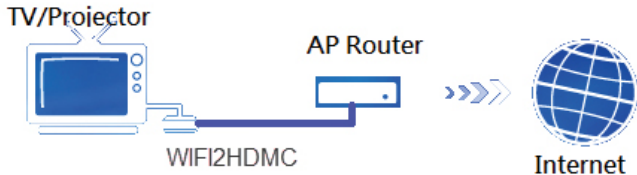
Bridge to Wireless connection

1. Change Virtual AP Bridge to "Bridge to Wireless" and click Apply.
2. Click Wireless connection button. The Wireless AP list will display on the screen.
3. Choose the AP you want to connect to.



Bridge to Ethernet / Wired Connection

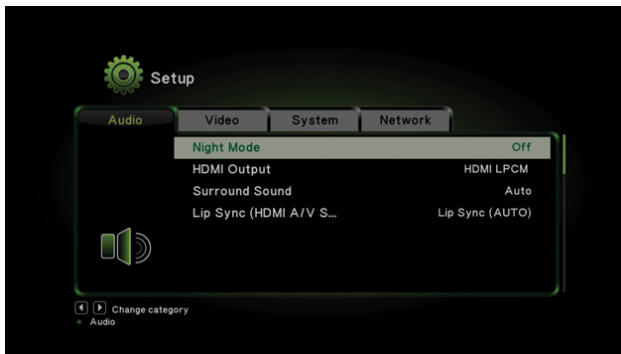
1. Connect a LAN cable from WIFI2HDMC to the AP router.
2. Change Virtual AP Bridge to "Bridge to Ethernet" and click "Apply". Then you can bridge WIFI2HDMC to Internet.



Note: WIFI2HDMC must connect to an AP router and can't connect to WAN directly.

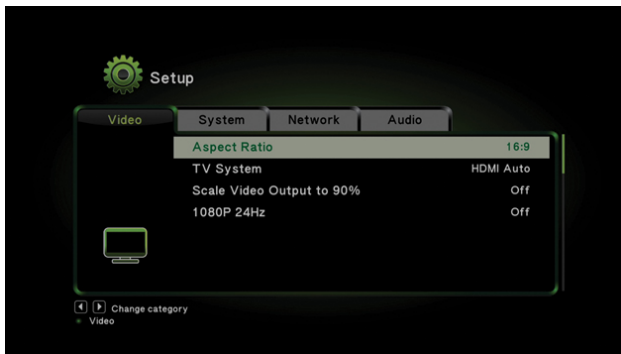
Audio

Adjust advanced audio settings such as Night mode, HDMI Audio output format, SPDIF output format, Surround sound setting and Lip Sync setting from this page.



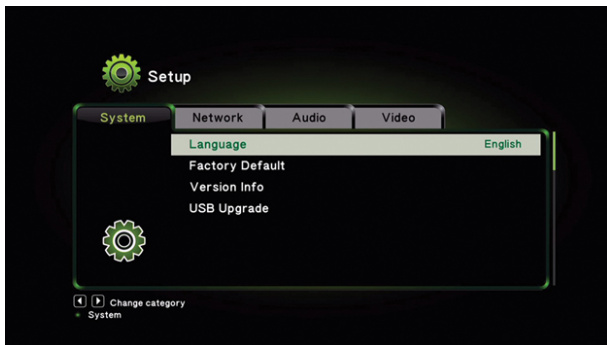
Video

Adjust Aspect Ratio, TV out video format, and other video settings from the video setup page.



System

Set the OSD Language, reset to Factory Default, check the firmware Version, and perform a firmware upgrade from the system setup page.



Specifications

Audio Support	Yes
Cabling	Wireless Ethernet
Output Signal	HDMI
Number of Ports	1
Connector(s)	1 - 3.5 mm Mini-Jack (3 Position) Female 1 - HDMI (19 pin) Female 1 - RJ-45 Female 1 - USB 3.0 A (9 pin; SuperSpeed) Female Wireless N (IEEE 802.11n)
Maximum Digital Resolutions	1920x1080 / 1080p
Wide Screen Supported	Yes
OS Compatibility	Windows® 8 (32/64), 7(32/64), Vista (32/64)
LED Indicators	1 - Power/Activity LED
Power Adapter	5V, 1A
Enclosure Material	Plastic
Operating Temperature	0°C to 45°C (32°F to 131°F)
Storage Temperature	-20°C to 60°C (-4°F to 140°F)
Humidity	20%~80% RH
Dimensions	133 x 71 x 27 mm
Weight	140 g

Technical Support

StarTech.com's lifetime technical support is an integral part of our commitment to provide industry-leading solutions. If you ever need help with your product, visit www.startech.com/support and access our comprehensive selection of online tools, documentation, and downloads.

For the latest drivers/software, please visit www.startech.com/downloads

Warranty Information

This product is backed by a two year warranty.

In addition, StarTech.com warrants its products against defects in materials and workmanship for the periods noted, following the initial date of purchase. During this period, the products may be returned for repair, or replacement with equivalent products at our discretion. The warranty covers parts and labor costs only. StarTech.com does not warrant its products from defects or damages arising from misuse, abuse, alteration, or normal wear and tear.

Limitation of Liability

In no event shall the liability of StarTech.com Ltd. and StarTech.com USA LLP (or their officers, directors, employees or agents) for any damages (whether direct or indirect, special, punitive, incidental, consequential, or otherwise), loss of profits, loss of business, or any pecuniary loss, arising out of or related to the use of the product exceed the actual price paid for the product. Some states do not allow the exclusion or limitation of incidental or consequential damages. If such laws apply, the limitations or exclusions contained in this statement may not apply to you.

Hard-to-find made easy. At StarTech.com, that isn't a slogan. It's a promise.

StarTech.com is your one-stop source for every connectivity part you need. From the latest technology to legacy products — and all the parts that bridge the old and new — we can help you find the parts that connect your solutions.

We make it easy to locate the parts, and we quickly deliver them wherever they need to go. Just talk to one of our tech advisors or visit our website. You'll be connected to the products you need in no time.

Visit www.startech.com for complete information on all StarTech.com products and to access exclusive resources and time-saving tools.

StarTech.com is an ISO 9001 Registered manufacturer of connectivity and technology parts. StarTech.com was founded in 1985 and has operations in the United States, Canada, the United Kingdom and Taiwan servicing a worldwide market.

Free Manuals Download Website

<http://myh66.com>

<http://usermanuals.us>

<http://www.somanuals.com>

<http://www.4manuals.cc>

<http://www.manual-lib.com>

<http://www.404manual.com>

<http://www.luxmanual.com>

<http://aubethermostatmanual.com>

Golf course search by state

<http://golfingnear.com>

Email search by domain

<http://emailbydomain.com>

Auto manuals search

<http://auto.somanuals.com>

TV manuals search

<http://tv.somanuals.com>