

# SELECT<sup>®</sup>

## Residential Gas Water Heaters



State Select<sup>®</sup> gas water heaters feature patented C3<sup>®</sup> Technology design, which meets the ANSI Z21.10.1-CSA 4.1 standards for flammable vapor ignition resistance. Select water heaters are available in a variety of heights which can accommodate situations with limited installation space.

### Diffuser Dip Tube

- Reduces lime and sediment buildup, maximizes hot water output
- Made from State PEXAN<sup>™</sup>, a cross-linked polymer that can withstand long-term exposure to temperatures up to 400°F

### Green Choice<sup>®</sup> Gas Burner

- Patented design reduces NOx emissions up to 33%
- Complies with Southern California and Texas requirements

### Easy-to-Light Piezo Ignitor

- For fast “one-hand” pilot ignition
- Standard on all C3 Technology models

### Glass-Lined Tank with Aluminum Anode Rod

- For long-lasting protection against rust and corrosion

### Durable Brass Tamper-Resistant Drain Valve

### Factory-Installed Temperature & Pressure (T&P) Relief Valve

### Design-Listed by CSA International

- Certified at 300 PSI test pressure and 150 PSI working pressure
- Listed according to ANSZ21.10.1-CSA 4.1 standards governing storage-type water heaters
- Additional code compliance: UBC, CEC, SBCC, CABO, HUD, BOCA National Codes and 2004 NAECA

### C3 Technology<sup>®</sup> Gas Water Heater Design – See other side

### 6-Year Limited Tank and Parts Warranty

- Consult written warranty or contact State Water Heaters for complete information



For more information on Select<sup>®</sup> contact:  
 State Water Heaters  
 500 Tennessee Waltz Parkway, Ashland City, TN 37015  
 800.365.0024 Toll-free USA  
 www.statewaterheaters.com

**SOLID.STATE.**



# SELECT<sup>®</sup>

## Residential Gas Water Heaters



MODEL NUMBER	PEAK DEMAND OUTPUT (1st Hour Rating Gallons)	ENERGY FACTOR	GALLON CAPACITY	BTU INPUT PER HOUR NATURAL†	RECOVERY 90°F RISE GALLONS	R VALUE**	DIMENSIONS IN INCHES							APPROX. SHIPPING WEIGHT (LBS)
							A	B	C	D	E	F	DRAFT HOOD OUTLET	
<b>TALL MODELS</b>														
GS6 30 YBRT	66	0.62	28	40,000	41	8	59-5/8	55-1/4	16	13-3/8	8	49-7/8	3 or 4	112
GS6 40 YBRT	71	0.59	38	40,000	39	8	57-5/8	53-1/4	18-1/2	13-3/8	8	47-3/8	3 or 4	126
GS6 50 YBRT	91	0.58	50	40,000	41	8	60-7/8	56-1/2	20	13-3/8	8	50-3/8	3 or 4	160
<b>SHORT MODELS</b>														
GS6 30 YBRS	66	0.61	30	40,000	40	8	48-1/8	43-3/4	18-1/2	13-3/8	8	36-5/8	3 or 4	122
GS6 40 YBRS	71	0.59	40	40,000	41	8	51-5/8	47-1/4	20	13-3/8	8	41	3 or 4	139
GS6 50 YBRS	80	0.58	50	40,000	41	16	53-1/4	48-3/4	24	13-3/8	8	43-1/2	3 or 4	168

Recoveries are rounded to nearest gallon.  
 Water Connections - 3/4" male on all models except GS6 50 YBRT (3/4" female).  
 External heat trap nipples are supplied on all models except GS6 50 YBRT.  
 † Propane Gas - 37,000 BTU models.  
 \*\*All models are 1-inch foam except GS6 50 YBRS (2-inch foam).

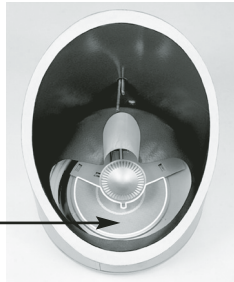
For 10-Year Tank and 6-Year Parts Warranty, change "6" to "X" in Model Number (GSX 40 YBRT).  
 When ordering Propane, change "Y" to "H" in model number (GS6 40 HBRT).  
 When ordering top-mounted T&P Valve, add "G" to model number (GS6 40 YBRTG).

### Flammable Vapor Ignition Resistant C3 Technology<sup>®</sup> Water Heaters

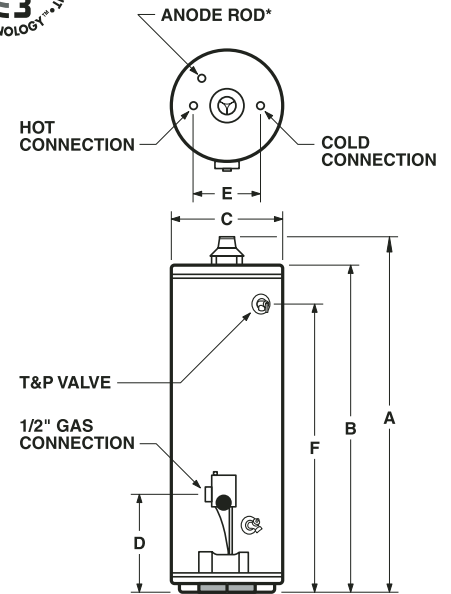
Corderite Combustion Containment (C3) design meets American National Standards Institute standards (ANS Z21.10.1-CSA 4.1) that deal with the accidental or unintended ignition of flammable vapors, such as those emitted by gasoline.

Covered by four U.S. patents, C3 Technology gas water heaters feature a sealed combustion chamber with air intake screen and a fireproof Corderite flame arrestor built into the water heater base. In addition, a Thermal Cutoff (TCO) device, integral with the thermocouple, is designed to shut off gas flow to the burner and pilot if poor combustion is detected.

In the unlikely event that flammable vapors accidentally enter the combustion chamber, the Corderite flame arrestor is designed so any flames burn off the top surface and cannot escape down through the arrestor.



- A. Easy-to-light Piezo Ignitor
- B. View port for easy inspection of burner inside sealed combustion chamber



\*Location for optional top-mounted T&P Valve, if ordered from factory. To order, add "G" to model number (GS6 40 YBRTG).

For complete information on limited warranties, consult written warranty, or contact the State Customer Care Center, 1-800-365-0024.

State Industries, Inc. reserves the right to make product changes or improvements without prior notice.

For more information on Select<sup>®</sup> contact:  
 State Water Heaters  
 500 Tennessee Waltz Parkway, Ashland City, TN 37015  
 800.365.0024 Toll-free USA  
 www.statewaterheaters.com

SOLID.STATE.



## Free Manuals Download Website

<http://myh66.com>

<http://usermanuals.us>

<http://www.somanuals.com>

<http://www.4manuals.cc>

<http://www.manual-lib.com>

<http://www.404manual.com>

<http://www.luxmanual.com>

<http://aubethermostatmanual.com>

Golf course search by state

<http://golfingnear.com>

Email search by domain

<http://emailbydomain.com>

Auto manuals search

<http://auto.somanuals.com>

TV manuals search

<http://tv.somanuals.com>